



Hand-finished
for the head, heart and gut of a drummer:

Anatomy of a legend in its second hundred years.

High-Gretsch Techware™

4880 - External Muffler (Clamp On)



9016 - 'CR' Telescoping Boom Double Tom Floor Stand
 9010 - 'CR' Double Tom Floor Stand
 4838 - Giant Tripod Base

4960 - Floating Action Pedal (Chain Drive)
 4958 - Giant Pedal
 4955 - Floating Action Pedal
 4959 - Deluxe Speed Cam Pedal



4989 - Deluxe Snare Stand
 4988 - Giant Snare Stand
 4987 - Short Deluxe Stand for Power S

4994 - Standard Throne
 4996 - Deluxe Throne (Hydraulic)
 4995 - Giant Throne (Piano Style)



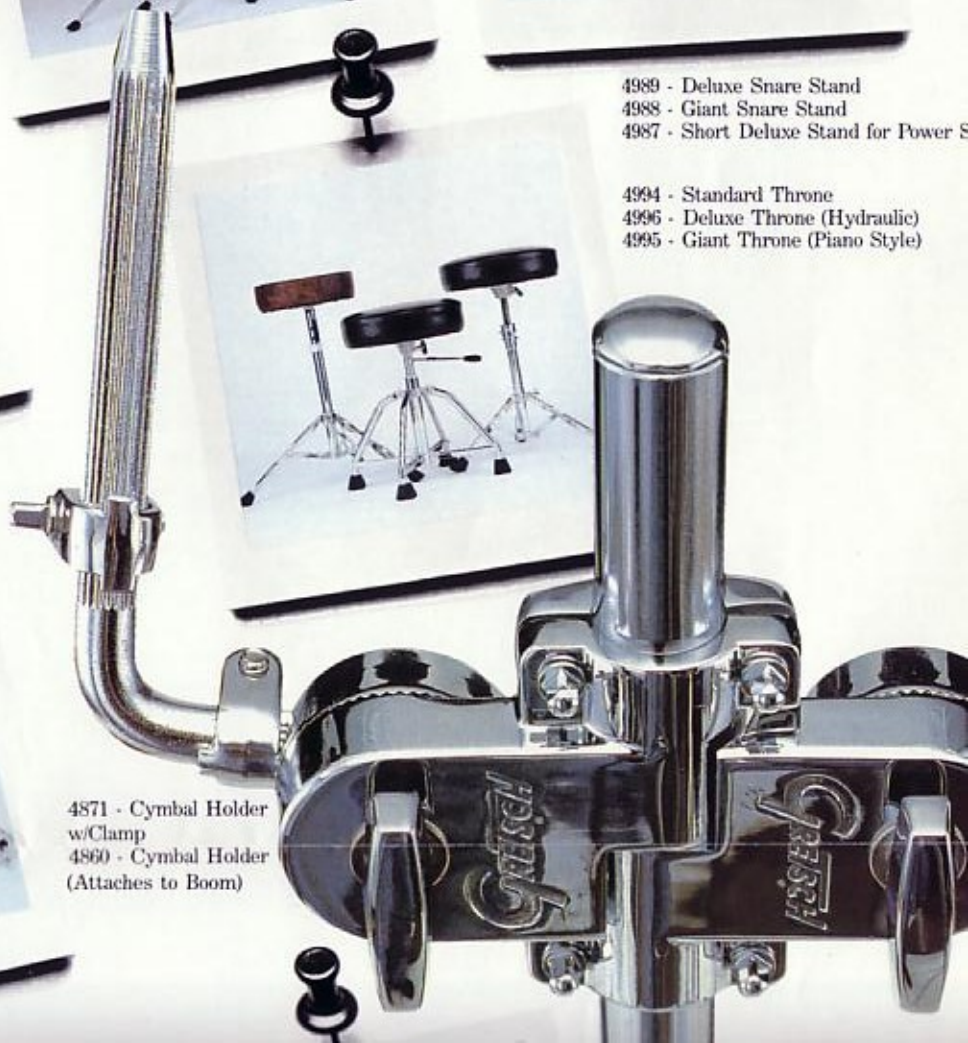
4870 - Heavy Duty Clamp



4849 - Giant Hi-hat



4871 - Cymbal Holder w/Clamp
 4860 - Cymbal Holder (Attaches to Boom)

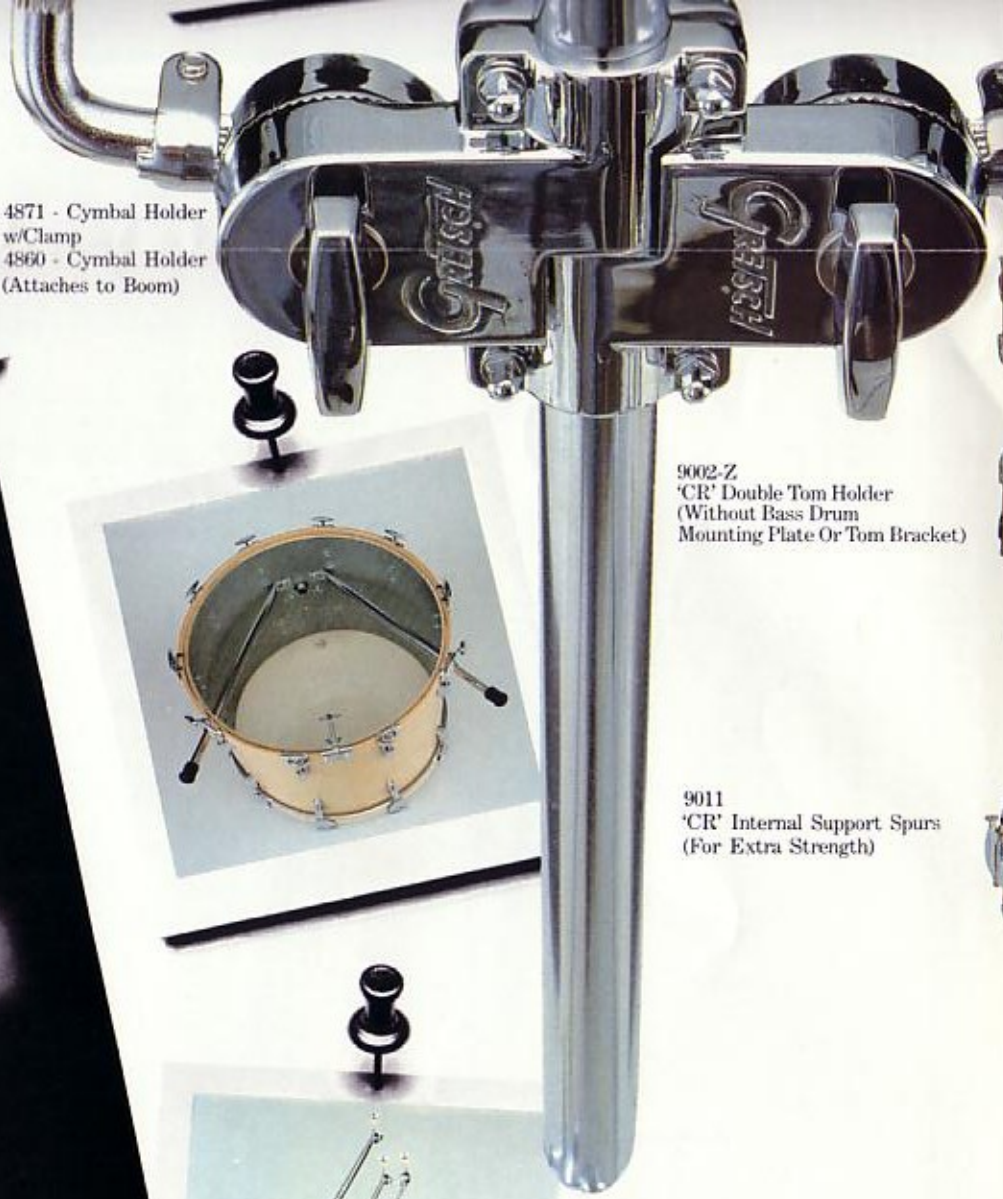


Heavy Duty Clamp

Giant Hi-hat



4871 - Cymbal Holder w/Clamp
4860 - Cymbal Holder (Attaches to Boom)



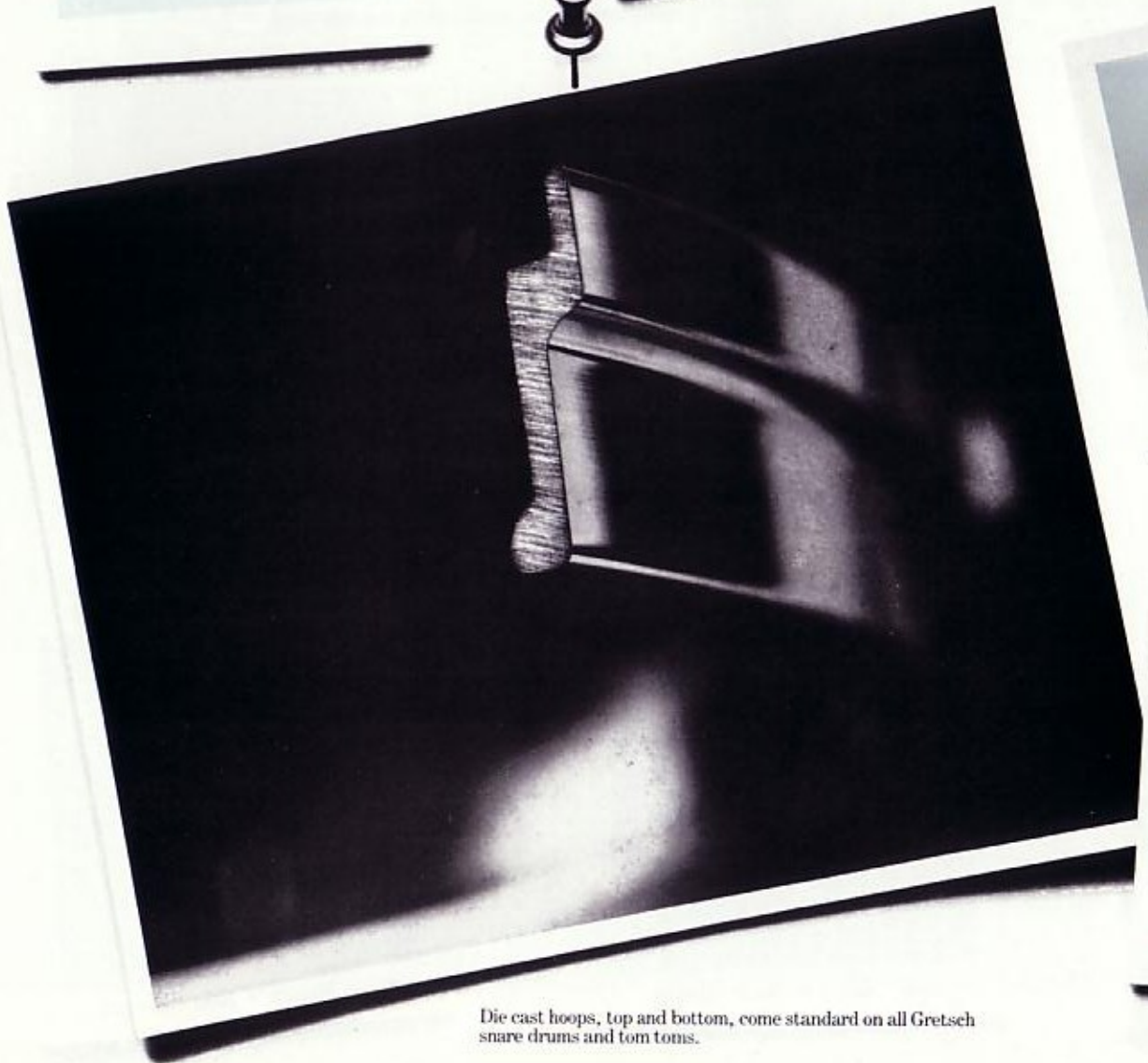
9002-Z
'CR' Double Tom Holder
(Without Bass Drum Mounting Plate Or Tom Bracket)



9011
'CR' Internal Support Spurs
(For Extra Strength)



4854 - Telescoping Boom Cymbal Stand
4853 - Giant Cymbal Stand w/Half Boom Arm
4852 - Giant Cymbal Stand w/Boom Arm
4850 - Straight Cymbal Stand



Die cast hoops, top and bottom, come standard on all Gretsch snare drums and tom toms.

What goes into a Gretsch Drum comes out. . . in a resounding legacy of pride.



Over a hundred years ago, Friedrich Gretsch knew the best way to build a quality drum was by hand . . . painstakingly, individually. It still is. And it's the way Gretsch Drums are made today.

Think of it . . . the applied knowledge and craftsmanship of a century old American company that has never yielded an inch in its stand on quality . . . those drums sitting in front of you, whether rich and finished wood, or nitron and chrome thunder machines, are much more than fine instruments. Gretsch drums are . . . a state of mind. What we do for drums does more than a drummer's head, heart and gut. In the other manufacturers will never comprehend. It's the way it's meant to be, and the way it will remain. It's in our blood.



At the turn of the century, Friedrich Gretsch and his crew were turning out drums heard 'round the world.



. . . one by one. They even went so far as to cure the drum heads by hand . . . we would too, if the newer methods didn't meet our standards. Wherever technology can improve things, we allow it, but never to the extent of compromising our unmistakable round, mellifluous sound for the sake of quantity, or ease of production. Never.



When we entered the power drum market, we entered it with strength. And took it over. We're no stranger to 'firsts' but in our own time. Nothing half-baked ever carries our name. We introduced the first small bass, the first disappearing bass drum spurs, the first internal support spurs, the first with die cast hoops which come standard on all Gretsch toms and snares . . . and the beat goes on to thunderous ac-

We're a closely held American company, just as in the beginning. In '81 we moved the plant to DeQueen, Arkansas with corporate offices in Gallatin, Tennessee near Nashville . . . come visit us at either place.

You'll see something that Mr. Gretsch would very much approve of . . . our hand-finishing production process that hasn't changed much in 100 years: The 6-ply maple shells have staggered butt-jointed laminations for added strength. Each undergoes an extensive 10-day process of trimming, machining, white wood sanding . . . bathing the shells in a special solution reveals the tiniest defects in outer lamination . . . the shells are then stained, sealed and seal-sanded repeatedly to give the finish depth and purity of color. Six coats of lacquer are applied, finished drums are hand-rubbed and waxed, the insides coated with a secret formula silver sealant . . . each drum is hand tuned and carefully packaged.

We've got a lot of exciting new competition-thumpers for you, to commemorate our centennial year . . . new lines, colors, finishes and refinements. Plus a limited edition "One in One Hundred" custom made series with each drum numbered, and I'm going to hand-etch sign every drum in every set.



You're going to hear a lot from Gretsch in our second hundred years . . . we're going to make soundwaves in the future, make drums that are the standard of the world . . . that's a promise.





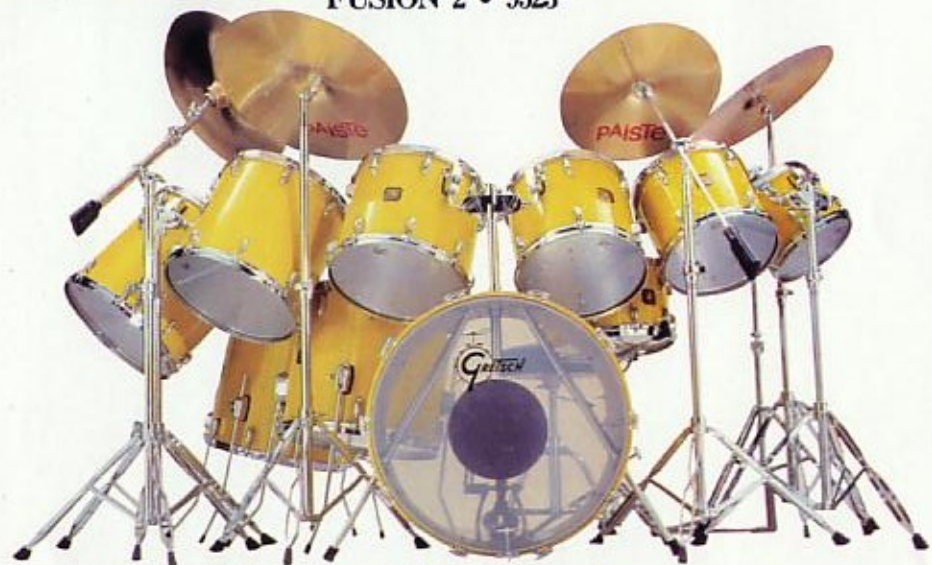
You're going to hear a lot from Gretsch in our second hundred years . . . we're going to make soundwaves in the future, making drums that are the standard of the world . . . that's a promise.



FUSION 2 • 9523*



ZENITH • 9551*



MONSTER PLUS 4 • 9547*

FUSION 2 • 9523 • Burnt Orange



Drums - M4247: 16x22 Bass Drum, 4909: Anchor, 9012: Disappearing Spurs, M4413: 8x8 Tom Tom, M4414: 8x10 Tom Tom, M4415: 10x12 Tom Tom, M4416: 11x13 Tom Tom, 4418: 16x16 Floor Tom, 4196: 6x14 20 Lug Wood Snare. **Stands and Holders** - 9010: (2) Double Tom Stands, 4850: Straight Cymbal Stand, 4852: (2) Boom Cymbal Stands, 4888: Snare Stand, 4849: Hi-hat, 4858: Giant Pedal.

ZENITH • 9551 • Maple



Drums - M4247: 16x22 Bass Drum, 4909: Anchor, 9011: Internal Support Spurs, M4299: 16x24 Bass Drum, 4909: Anchor, 9011: Internal Support Spurs, M4412: 8x8 Tom Tom, M4413: 8x8 Tom Tom, M4414: 8x10 Tom Tom, 4415: 8x12 Tom Tom, 4416: 9x13 Tom Tom, M4415: 10x12 Tom Tom, 4420: 10x14 Tom Tom, M4416: 11x13 Tom Tom, M4420: 12x14 Tom Tom, 4421: 12x15 Tom Tom, M4421: 14x15 Tom Tom, M4422: 16x16 Tom Tom, 4419: 16x18 Floor Tom, 4423: 18x18 Floor Tom, 4196: 6x14 20 Lug Wood Snare. **Stands and Holders** - 9002: (2) Double Tom Holders, 9010: (2) Double Tom Floor Stands, 9016: (2) Telescoping Boom Double Floor Stands, 4852: (3) Boom Cymbal Stands, 4854: (2) Telescoping Boom Cymbal Stands, 4871: (2) Cymbal Holders w/lamp, 4908: (2) Snare Stands, 4849: Hi-hat, 4858: (2) Giant Pedals.

MONSTER PLUS 4 • 9547 • Yellow Nitron



Drums - M4299: 16x24 Bass Drum, 4909: Anchor, 9011: Internal Support Spurs, M4414: 8x10 Tom Tom, M4415: 10x12 Tom Tom, M4416: 11x13 Tom Tom, M4420: 12x14 Tom Tom, M4421: 14x15 Tom Tom, M4422: 16x16 Tom Tom, 4419: 16x18 Floor Tom, 4423: 18x18 Floor Tom, M4155: 8x14 20 Lug Wood Snare. **Stands and Holders** - 9002: Double Tom Holder, 9010: (2) Double Tom Floor Stands, 4850: (2) Straight Cymbal Stand, 4852: Telescoping Boom Cymbal Stand, 4888: Snare Stand, 4849: Hi-hat, 4858: Giant Pedal.

ARTIST 3 • 9550 • Rosewood



Drums - M4299: (2) 16x24 Bass Drums, 4909: Anchor, 9011: Internal Support Spurs, M4412: 8x8 Tom Tom, M4413: 8x8 Tom Tom, M4414: 8x10 Tom Tom, M4415: 10x12 Tom Tom, M4416: 11x13 Tom Tom, M4420: 12x14 Tom Tom, M4421: 14x15 Tom Tom, M4422: 16x16 Tom Tom, 4419: 16x18 Floor Tom, 4423: 18x18 Floor Tom, M4155: 8x14 20 Lug Wood Snare. **Stands and Holders** - 9002: (2) Double Tom Holders, 9010: Double Tom Stand, 9016: Telescoping Boom Double Floor Stand, 4850: (2) Straight Cymbal Stands, 4852: Boom Cymbal Stand, 4854: Telescoping Boom Cymbal Stand, 4888: Snare Stand, 4849: Hi-hat, 4858: (2) Giant Pedals.

PLAYER 9 • 9572 • Walnut



Drums - M4247: 16x22 Bass Drum, 4909: Anchor, 9011: Internal Support Spurs, M4414: 8x10 Tom Tom, M4415: 10x12 Tom Tom, 4418: 16x16 Floor Tom, 4155: 6 1/2x14 10 Lug Wood Snare. **Stands and Holders** - 9002: Double Tom Holder, 9013: Single Tom Floor Stand, 4852: Boom Cymbal Stand, 4871: (2)

claim from the world's most talented drummers.



ARTIST 3 • 9550*



PLAYER 9 • 9572*



4155





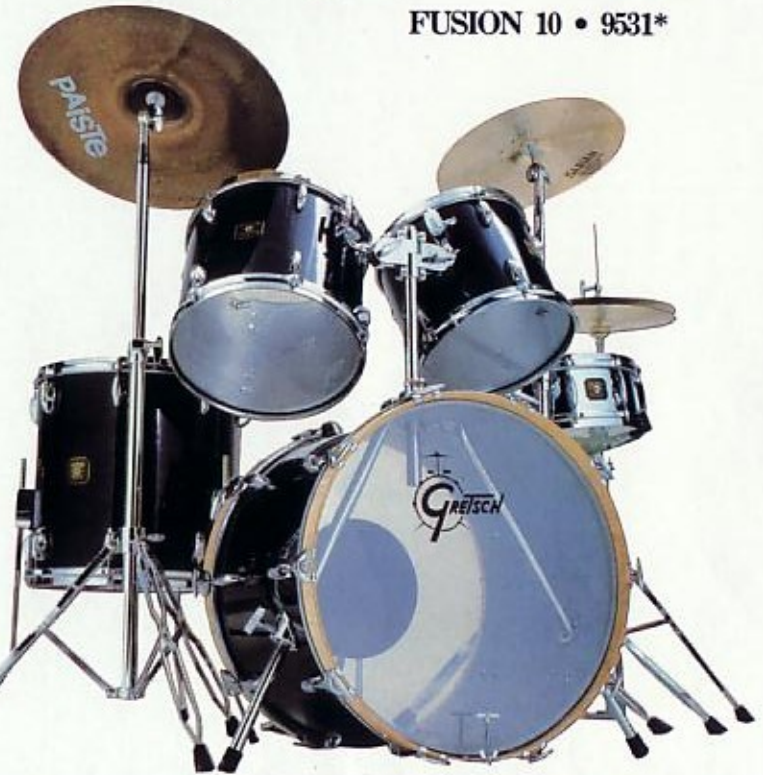
R 9 • 9572*



FUSION 10 • 9531*



POWER JAZZETTE • 9502*



POWER GRAND PRIX • 9507*

Stand, 4849; Hi-hat, 4960; Chain Drive Pedal.

FUSION 10 • 9531 • Purple



Drums - M4247: 16x22 Bass Drum, 4969; Anchor, 9011; Internal Support Spurs, M4414: 8x10 Tom Tom, M4415: 10x12 Tom Tom, M4416: 11x13 Tom Tom, M4421: 14x15 Tom Tom, M4422: 16x16 Tom Tom, M4153: 8x14 20 Lug Wood Snare. **Stands and Holders** - 9001: Single Tom Holder, 9010; (2) Double Tom Stands, 4852; (2) Bosen Cymbal Stands, 4871; (2) Cymbal

Holders w/clamp, 4988; Snare Stand, 4849; Hi-hat, 4958; Giant Pedal.

BROADCASTER • 9510 • White Nitron



Drums - 4929: 14x24 Bass Drum, 4969; Anchor, 9011; Internal Support Spurs, 4416: 9x13 Tom Tom, 4420: 10x14 Tom Tom, 4419: 16x18 Floor Tom, 4166: 6x14 20 Lug Brass Snare. **Stands and Holders** - 9002: Double Tom Holder, 4850; (2) Straight Cymbal Stands, 4988; Snare Stand, 4849; Hi-hat, 4955; Floating Action Pedal.

POWER JAZZETTE • 9502 • Antique Maple



Drums - M4244: 16x18 Bass Drum, 4969; Anchor, 9012; Disappearing Spurs, M4415: 10x12 Tom Tom, 4417: 14x14 Floor Tom, 4165: 5x14 10 Lug Brass Snare. **Stands and Holders** - 9001: Single Tom Holder, 4850; (2) Straight Cymbal Stands, 4988; Snare Stand, 4849; Hi-hat, 4955; Floating Action Pedal.

POWER GRAND PRIX • 9507 • Black Nitron



Drums - M4247: 16x22 Bass Drum, 4969; Anchor, 9011; Internal Support Spurs, M4415: 10x12 Tom Tom, M4416: 11x13 Tom Tom, 4418: 16x16 Floor Tom, 4166: 6x14 20 Lug Brass Snare. **Stands and Holders** - 9002: Double Tom Holder, 4850; (2) Straight Cymbal Stands, 4988; Snare Stand, 4849; Hi-hat, 4955; Floating Action Pedal.

NIGHTHAWK 7 • 9570 • Antique Maple



Drums - M4249: 16x20 Bass Drum, 4969; Anchor, 9012; Disappearing Spurs, M4247: 16x22 Bass Drum, 4969; Anchor, 9012; Disappearing Spurs, M4413: 8x8 Tom Tom, M4414: 8x10 Tom Tom, M4415: 10x12 Tom Tom, 4420: 10x14 Tom Tom, 4418: 16x16 Floor Tom, 4154: 6 1/2x14 10 Lug Wood Snare. **Stands and Holders** - 9010: Double Tom Floor Stand, 9013; (2) Single Tom Floor Stands, 4871; (3) Cymbal Holders w/clamp, 4988; Snare Stand, 4849; Hi-hat, 4960; (2) Chain Drive Pedals.

FUSION 12 • 9571 • Maple



Drums - 4247: 14x22 Bass Drum, 4969; Anchor, 9011; Internal Support Spurs, M4413: 8x8 Tom Tom, M4414: 8x10 Tom Tom, M4415: 8x12 Tom Tom, M4416: 9x13 Tom Tom, 4418: 16x16 Floor Tom, 4165: 5x14 10 Lug Brass Snare. **Stands and Holders** - 9002: Double Tom Holder, 9010; Double Tom Floor Stand, 4850; (2) Straight Cymbal Stands, 4871;

Cymbal Holder w/clamp, 4988; Snare Stand, 4849; Hi-hat, 4960; Chain Drive Pedal.

FUSION 6 • 9527 • Pink

Drums - M4044: 16x18 Bass Drum,



M4422



M4420



M4421



4454



4416



4421



4420



4217



4269



4450



4449



4448



4447



M4453



M4452



M4451



M4249



4417



4219



M4450



M4449



M4448



M4447



4153



4158



M4414



M4413



M4412



M4269



4412



4413



4244



4456



M4247



4418



M4416



4414



4415



M4421



4454



M4155



M4454



M4244



4271



4419



4423



Brass



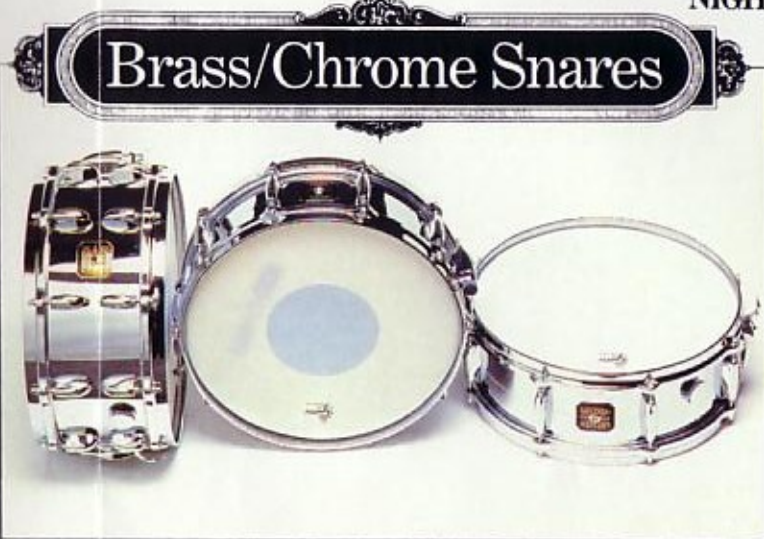
all Gretsch toms and snares . . . and the beat goes on to thunderous applause.



NIGHTHAWK 7 • 9570*



FUSION 12 • 9571*



Brass/Chrome Snares

4166 4165 4160



FUSION 6 • 9527*



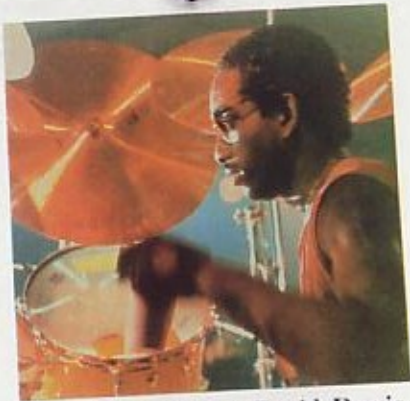
4000: Anchor; 9012: Disappearing
Spurs; M4413: 8x8 Tom Tom, M4414:
8x10 Tom Tom, 4415: 8x12 Tom Tom,
4416: 9x13 Tom Tom, 4417: 14x14
Floor Tom, 4165: 5x14 10 Lug Brass
Snare; **Stands and Holders** - 9010: (2)
Double Tom Floor Stands, 4850:
Straight Cymbal Stand, 4852: (2)
Boom Cymbal Stands, 4988: Snare
Stand, 4849: Hi-hat, 4958: Giant Pedal.

Gretsch Depth

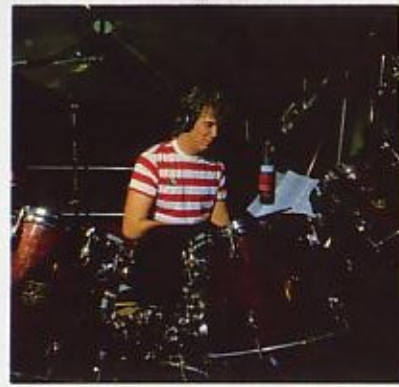
- CONVENTIONAL BASS DRUMS
- 4244 14x18
- 4249 14x20
- 4247 14x22
- 4269 14x24
- 4271 14x26
- POWER BASS DRUMS
- M4244 16x18
- M4249 16x20
- M4247 16x22
- M4269 16x24
- FLOOR TOMS w/LEGS
- 4456 14x16(Concert)
- 4417 14x14
- 4418 16x16
- 4419 16x18
- 4423 18x18
- CONVENTIONAL TOM TOMS
- 4412 9x9.5
- 4413 9x9.8
- 4414 9x10
- 4415 8x12
- 4416 9x13
- 4420 10x14
- 4421 12x15
- 4422 14x16
- POWER TOM TOMS
- M4412 8x6
- M4413 8x8
- M4414 8x10
- M4415 10x12
- M4416 11x13
- M4420 12x14
- M4421 14x15
- M4422 16x16
- CONVENTIONAL CONCERT TOMS
- 4447 9x9.5
- 4448 9x9.8
- 4449 9x10
- 4450 8x12
- 4451 9x13
- 4452 10x14
- 4453 12x15
- 4454 14x16
- POWER CONCERT TOMS
- M4447 8x6
- M4448 8x8
- M4449 8x10
- M4450 10x12
- M4451 11x13
- M4452 12x14
- M4453 14x15
- M4454 16x16
- SNARE DRUMS (Brass/Chrome)
- 4160 5x14 - 8 lugs
- 4165 5x14 - 10 lugs
- 4166 6x14 - 20 lugs
- SNARE DRUMS (Wood Shells)
- 4157 5x14 - 8 lugs
- 4153 6x14 - 16 lugs
- 4158 5x14 - 10 lugs
- 4154 6x14 - 10 lugs
- 4155 6x14 - 20 lugs
- M4155 8x14 - 20 lugs

*Cymbals and drum thrones not included on sets as shown.

Gretsch Greats



Tony Thompson • David Bowie



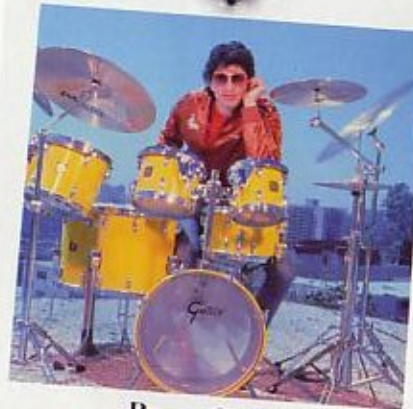
Gary Ferguson • Eddie Money



Charlie Watts • Rolling Stones



Mark Herndon • Alabama



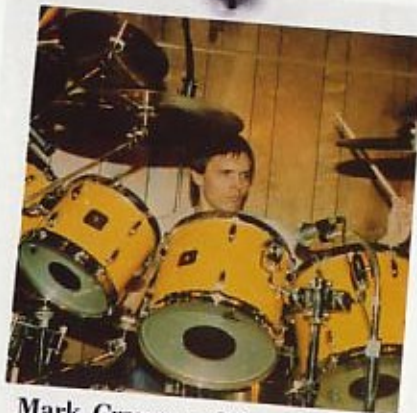
Bruce Gary



Steve Ferrone • Average White Band



Richard Gates • Nantucket



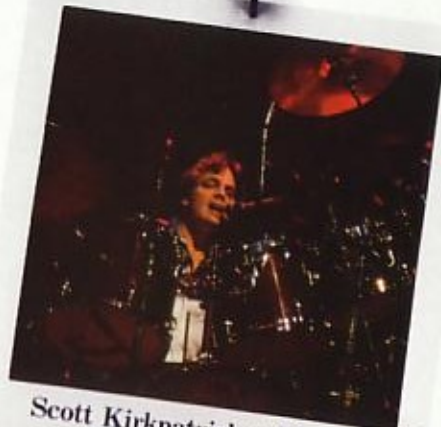
Mark Craney • Gino Vannelli



Slim Jim Phantom • Stray Cats



Tony Williams



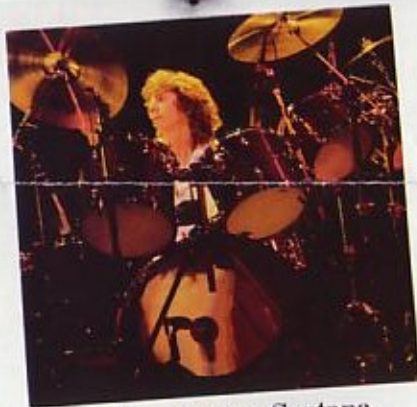
Scott Kirkpatrick • Firefall



Mark Sanders • Tower of Power



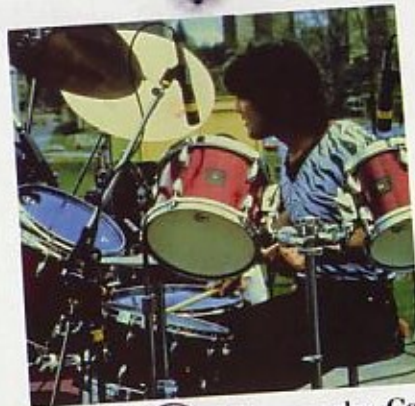
Michael Stephans



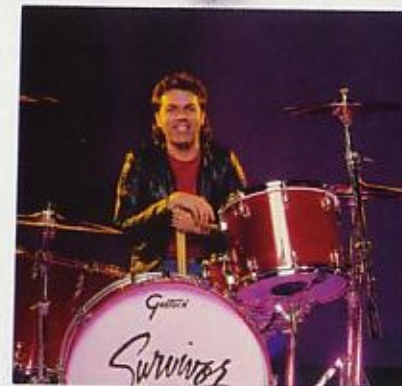
Graham Lear • Santana



Michael Stephans



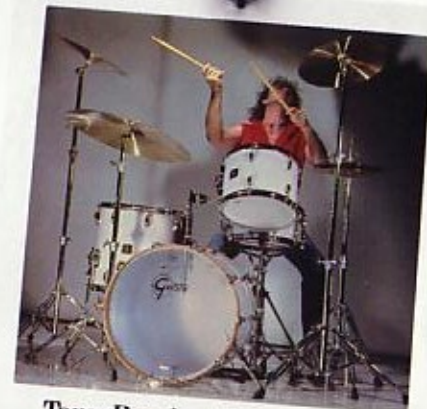
Skip White • Commander Cody



Marc Droubay • Survivor



Your Name • Your Group



Tony Brock • Rod Stewart



Fred Gretsch Enterprises
P.O. Box 358,
Ridgeland, South Carolina 29936
(803) 726-8144 Telex: 386628