

LUDWIG

Drums and Accessories

LUDWIG and LUDWIG

Drum Makers to the Profession

CHICAGO



Catalog G

Ludwig & Ludwig

INC.

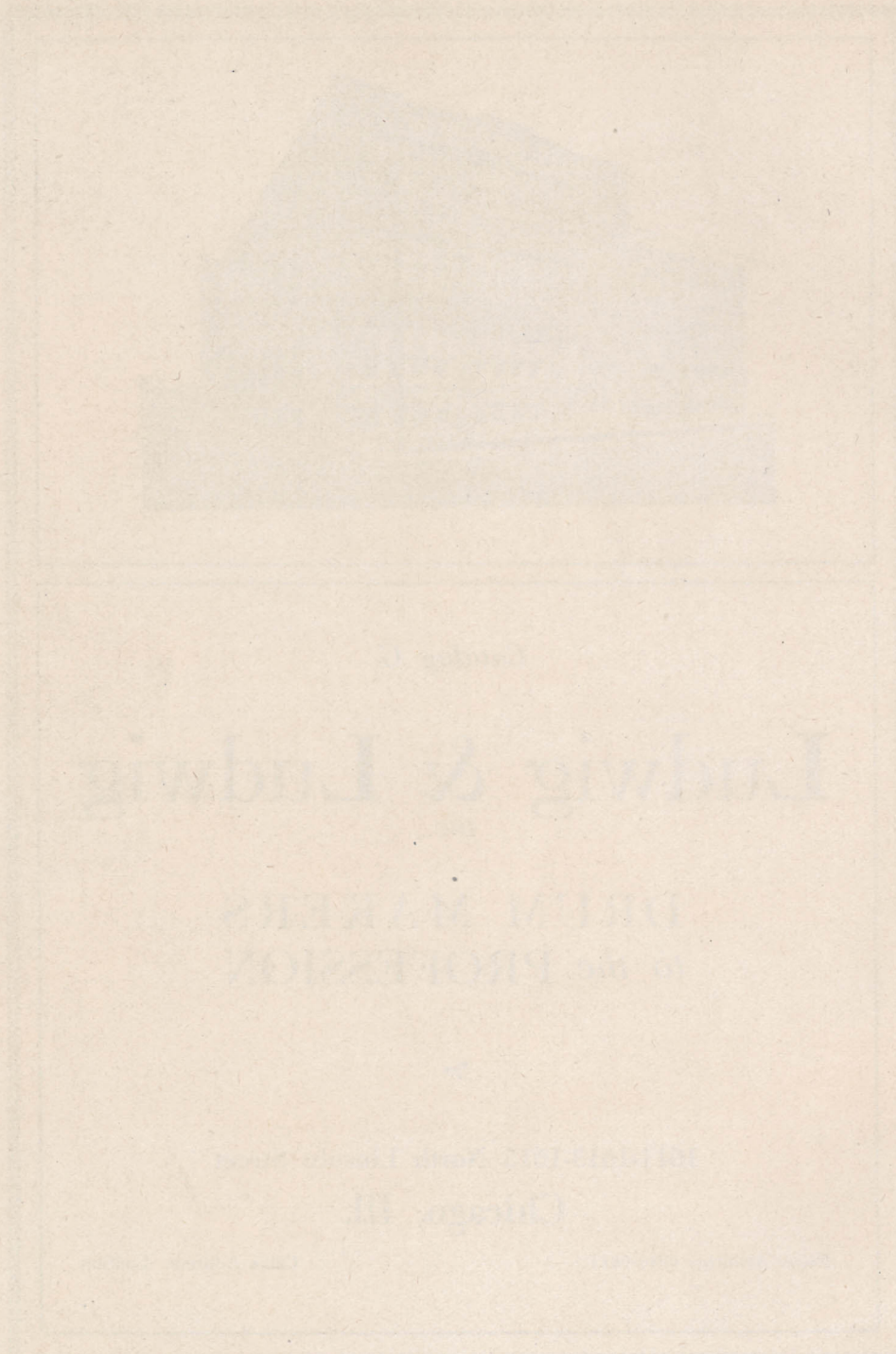
DRUM MAKERS
to the PROFESSION



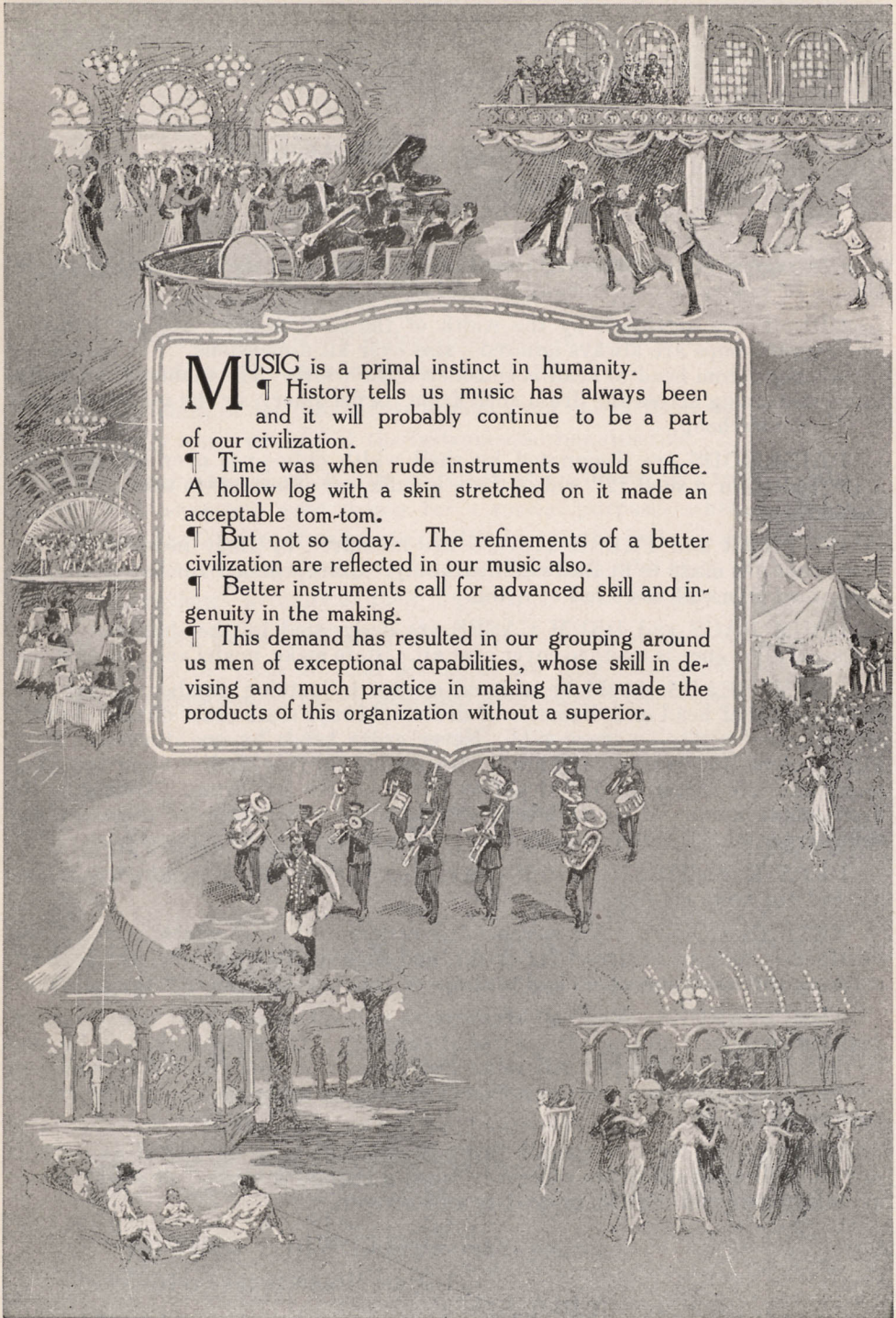
1611-1613-1615 North Lincoln Street
Chicago, Ill.

Phone Armitage 0080-0081

Cable Address: Ludrum



MADE IN
U. S. A.



MUSIC is a primal instinct in humanity.
¶ History tells us music has always been
and it will probably continue to be a part
of our civilization.

¶ Time was when rude instruments would suffice.
A hollow log with a skin stretched on it made an
acceptable tom-tom.

¶ But not so today. The refinements of a better
civilization are reflected in our music also.

¶ Better instruments call for advanced skill and in-
genuity in the making.

¶ This demand has resulted in our grouping around
us men of exceptional capabilities, whose skill in de-
vising and much practice in making have made the
products of this organization without a superior.



Instructions for Ordering

Always order by Catalog Number

Observance of the following directions will avoid the delay caused by an exchange of letters before your order is filled.

DRUMS are measured by the width of the shell proper, and its diameter. The counterhoops are always ignored—also over all dimensions. For instance—the distance from head to head is considered the width. The diameter is the distance measuring across the drum shell from its periphery, or the inside diameter of the counterhoop.

DRUM RODS are designated by shell width only—not over all, therefore a 12" rod is for a shell 12" wide—there is sufficient allowance to take care of the counterhoops.

COUNTER and **FLESH HOOPS** are measured by their inside diameters. Our hoops are made to fit Ludwig Shells only. State whether for batter or snare side, wood or metal and kind of drum.

DRUM BAGS and **DRUM CASES** are designated by the shell size only—sufficient allowance is made to cover over all. State make, model and size of drum.

DRUM HEADS should be ordered always by catalog number, giving both the diameter of head and diameter of drum. Always state exact quality desired, also whether batter or snare side. Never order heads by one dimension only. For instance, 16" head or 32" head. We cannot fill this kind of an order. You must state 20" head for 16" drum or 36" head for 32" drum. Owing to the destructible nature of drum heads, we are unable to guarantee them for any definite period. Heads not soaked will be exchanged without question.

REPAIR PARTS: Give full description; preferably a rough drawing or marked cut from catalog.

RETURN GOODS: All merchandise ordered from us which is not found satisfactory may be returned for credit, and should in all cases be sent *prepaid*, marking thereon your name and address so that we can identify the package.

REMITTANCES: Make all remittances by express or postal money orders, drafts or cashier's checks. Do not send currency. Orders less than \$1.00 may be paid in postage stamps. All retail orders must be accompanied by sufficient money to pay for the order or sufficient deposit to allow us to ship the goods; balance, C. O. D.

We will consider it a special favor if you will keep us posted as to your correct address at all times, especially when a change is made. This will enable us to keep our mailing list up-to-date and correct.

LUDWIG & LUDWIG,
"Drum Makers to the Profession,"

Chicago, Ill.



Introductory

KNOWING HOW" counts for a whole lot in this world. But there is more than one kind of "Knowing How."

There is an army of college professors who can tell you all about the theory of sound as it relates to music.

But it's dollars to doughnuts that probably not one of them would know how to scientifically construct any of the instruments they describe.

By the same token there is a lot of theory about drums and trap drummers' outfits. But when you want drums for a special purpose—when you may be "just a little shy" yourself as to what will give you the best service—then is the time it pays you to come to experienced professionals who have the experience and the "know how" actually at their finger ends, both in theory and practice.

Here is where we make it possible for every professional or amateur drummer in America to "cash in" and benefit by our long and varied experience in every known condition of the professional drummers' experience.

We are professionals—we are practical drummers and have had long experience.

We know that professionals must have the best.

With us a drum is not a drum unless it is perfectly constructed, "plays" easily and is snappy.

Therefore, no drum, regardless of its price, leaves the house until it has had my personal inspection and proves itself to be a worthy sample of our art.

We believe in personal service. We know from past experience that personal attention and quality merchandise is what you professional men want.

We propose that you shall get it in all your dealings with Ludwig & Ludwig.

While thanking you for the hearty and generous recognition of our efforts to serve you well in the past, we extend you greetings.

We also trust we shall hear from you frequently and promise you the best in the house.

Fraternally yours,

LUDWIG & LUDWIG, Inc.

By Wm. F. Ludwig, Pres.



How We Got Our "Know-How"

When you go to a man for advice or help, it makes a big "hit" with you to know he talks from actual experience.

Theory is fine, but when the man you are talking to can say: "Sure, I know just what you mean. I've been there myself many a time"—when you can get that kind of help you know you are on the right track.

Those of you whom we have not met personally can not be expected to guess where we had our training.

Believing that it will prove interesting to those with whom we deal, we give below the professional experience of Ludwig Brothers.

That it has been a big factor in our pronounced success in pleasing you professional drummers is evident from the rapid growth of this business.

With each year we have been fortunate enough to find new ways in which to give a better and larger service to America's professional and amateur drummers.

We keep up right to the minute in all the new things and in the standard requirements of the profession we feel we stand at the head of the procession.



William F. Ludwig

Professional Record of William F. Ludwig

Omaha Exposition
 Grand Opera House, Chicago, Ill.
 Brooke Band, New Orleans, La.
 Brooke Band, Buffalo Exposition
 Phinney's Band, St. Louis Exposition
 Phinney's Band, Jamestown Exposition
 English Grand Opera Co., Four Seasons' Tour
 Madam Butterfly Grand Opera Co.
 Pittsburgh Symphony Orchestra
 Chicago Grand Opera Company
 Chicago Symphony Orchestra

Professional Record of the Late Theobald R. Ludwig

Delwood Park Band, Joliet, Ill.
 Weil's Band, St. Louis, Mo.
 Colonial Theatre, Chicago, Ill.
 Auditorium Theatre, Chicago, Ill.
 Innes' Band, En Tour
 Ballman's Band, Chicago, Ill.
 Hand's Band, Chicago, Ill.
 Powers Theatre, Chicago, Ill.
 Chicago Grand Opera Company



*The Late
 Theobald R. Ludwig*

America's Leading Drummers

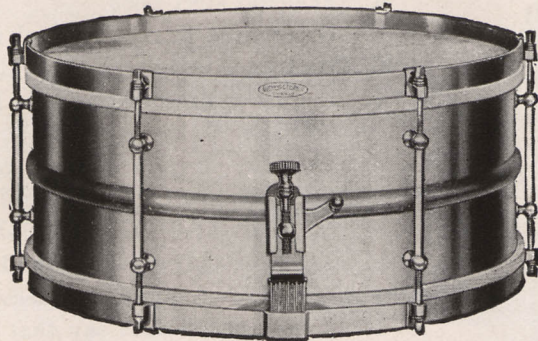
The drummers of the following foremost musical organizations in the U. S. have signified their approval of the working principles of this drum by choosing it for their daily work in preference to any other make:

Victor Herbert Orchestra, New York
 New York Philharmonic Orchestra
 New York Symphony Orchestra
 New Symphony Orchestra of New York
 Russian Symphony Orchestra, New York
 Detroit Symphony Orchestra
 Los Angeles Symphony Orchestra
 Philharmonic Orchestra of Los Angeles
 Chicago Grand Opera Company
 St. Louis Symphony Orchestra
 Victor Orchestra, Philadelphia, Pa.
 Minneapolis Symphony Orchestra

Conway's Band
 Liberati's Band
 Sousa's Band, Great Lakes, Ill.
 Arthur Pryor's Band
 Kryl's Band
 Innes' Band
 Ballman's Band, Chicago
 Ferulo's Band
 Don Philipino Band
 United States Marine Band, Washington, D. C.
 "The President's Own."



The Ludwig All-Metal Separate Tension Drum



Band Model

The single tension idea is a fine theory. But, like a lot of theories, putting the single tension idea into practice "is something else again."

When you think about how the sound is produced, it is plain as can be.

You know that the batter head of the drum receives the stroke. The concussion is transmitted by the shut in air to the snare head. The vibration of this head against the snares makes the drum beat audible.

Perfect vibration is an absolute necessity to good drum tone. As some of the force is necessarily lost in transmission from head to head on any kind of a drum, the batter head should always be given a little more tension than the snare head in order to transmit the stroke in full and yet retain enough force to *properly rebound the sticks*.

All right—now, those being the facts of the case, how in the world can one hope to keep the two separate heads in proper tension to each other if they are both on the *same* tension rod?

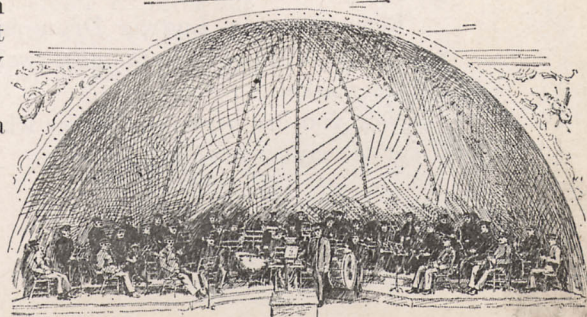
You might just as well expect the violinist to tune two strings from the same peg.

In the Ludwig All-Metal Separate Tension Drum the heads are adjusted independently of each other. The idea is scientific—it is practical.

The almost instant recognition by professional drummers of the common sense of the Ludwig principle made this drum a success from the very start.

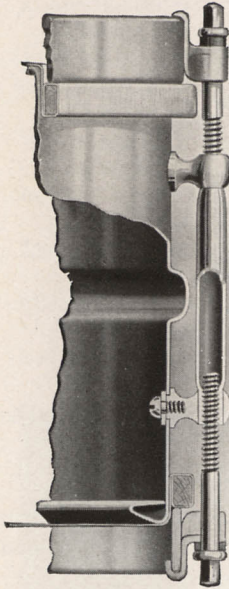
A correct tension system is not all that is necessary to make a drum a complete success. The construction of the shell must be correct not by outside appearance, but by the reinforcement on the inside of the shell, and the shell must be so constructed that it will permanently retain its perfect round.

When you buy a drum, be sure it is a **Ludwig**. That is your protection.





Exclusive Features of the Ludwig Drum



1. Skeleton steel hook.
2. Brass tube to receive steel rod.
3. Clearance in tube to prevent binding of screw.
4. Lug re-enforcement on tube prevents stripping threads.
5. *Shell stock spun over at right angle. This feature insures absolute rigidity, and a perfect round without undue weight.*
6. Rib to re-enforce body shell.

Note absence of bulky and heavy inside bracings. Now, most men would say that the exclusive features we list above are enough for any one drum.

But, don't you think it. We have some more good things up our sleeve for you to think about.

What would you give for a PERFECT snare strainer and muffler on your present drum?

It would help you mightily—you know it.

First thing, please get this fact firmly in mind as a starter—that snares and snare strainer are very important on a good drum.

Ludwig & Ludwig use gut snares exclusively

The new Ludwig patented strainer will not permit the snares to twist.

Ludwig & Ludwig snares do not get out of adjustment while you play on the hoop, or are playing tom tom with the snares released. That is why we designed a new strainer.

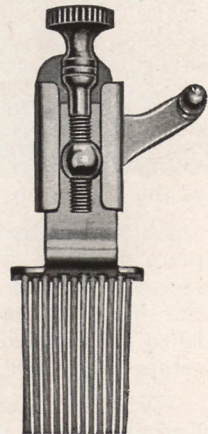
Why these things are so, we will prove to you later on.

Just now and for the present put them down as "gospel truth."

Keep in mind, also, please, that the proper selection of heads for your drums is part of our personal service plan. Tell us what you want and you will receive a drum that fits your work perfectly.

Remember, the Ludwig Drum is no experiment—it has proven its superiority in the past twelve years that it has been on the market.

Now you are beginning to see what it means to deal with practical experienced supply men.

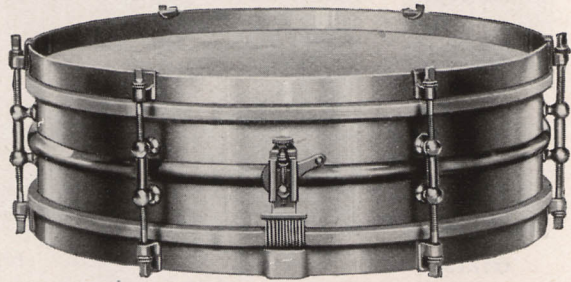




The Ludwig All-Metal Separate Tension Drum



*Look for the Name
Ludwig & Ludwig
on every Ludwig Drum*



Orchestra Model

Now it does not necessarily follow that every separate tension drum is an assured success, because it happens to have the correct method of tensioning.

If the shell is of frail construction, or is made of a substance that will warp or in any other manner lose its perfect round, the tone will be seriously interfered with.

The Ludwig All-Metal Drum is built of eighteen-gauge hard-spun brass, making a very solid shell. In it, in addition to the best of material, goes also the best of workmanship.

Putting the three factors together—Knowing How, Good Materials, and Excellent Workmanship—you are bound to get a perfect instrument.

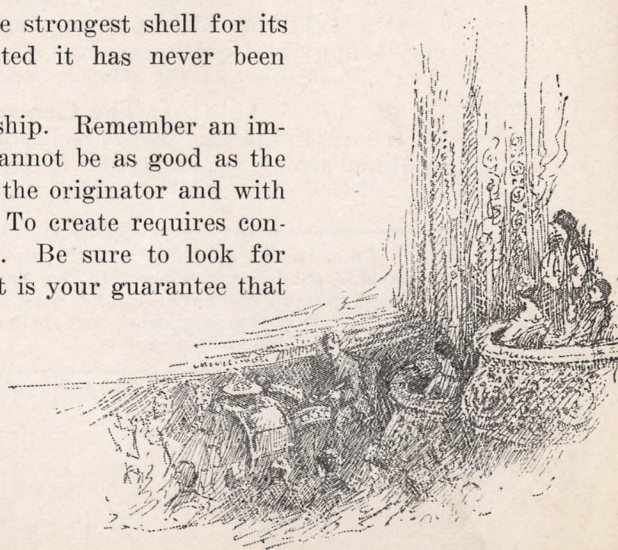
And that is just what a well-known drummer said.

He looked at the drum we built for him—gave it a trial.

Tickled to death—his first remark was, "It's a perfect instrument."
And here is the final "Punch."

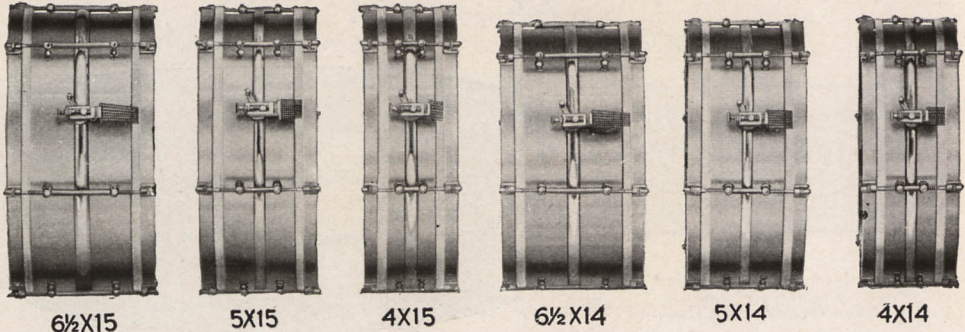
The LUDWIG METAL SHELL is the strongest shell for its weight ever constructed; although imitated it has never been equaled.

To be imitated is the penalty of leadership. Remember an imitation is only an artificial likeness, and cannot be as good as the original because the original was built by the originator and with greater care than an imitator would use. To create requires concentration and study. Anyone can copy. Be sure to look for the name "Ludwig" on every drum. That is your guarantee that it is a genuine Ludwig All Metal Drum. We guarantee that a Ludwig will give you satisfaction.





What Size Drum Do You Need?



While it is well, when possible, to have a drum especially adapted to the work in hand, it is not absolutely necessary.

The Ludwig & Ludwig All-Around Drum

It will take you farther and better than any other one drum you can own. It is 5x14". It is light and sensitive enough for small orchestra and an ideal size for the theatre. It can also be used for band work with good results.

No. 1—Size, 5x14"; shipping weight, 8 lbs. Price.....\$.....

The Concert Model

It is 6½x14"—sharp, snappy and full of volume for concert bands, symphony orchestra or musical shows.

No. 2—Size, 6½x14"; shipping weight, 10 lbs. Price.....\$.....

The Band Model

It is 6½x15", especially designed for large concert band. Has great volume.

No. 3—Size, 6½x15"; shipping weight, 10 lbs. Price.....\$.....

The Theatre Model

It is 5x15", for any show that may come along. Suitable for small or large orchestra.

No. 4—Size, 5x15"; shipping weight, 10 lbs. Price.....\$.....

The Dance Model

It is 4x14", an ideal size for dance or small theatre. It is light and strong, very snappy and quick response.

No. 5—Size, 4x14"; shipping weight, 10 lbs. Price.....\$.....

The Concert Dance Model

It is 4x15", a size that is well adapted for dance and theatre work. Small, light and strong, yet sufficient volume for large orchestras.

No. 6—Size, 4x15"; shipping weight, 10 lbs. Price.....\$.....

FIVE DAYS' TRIAL

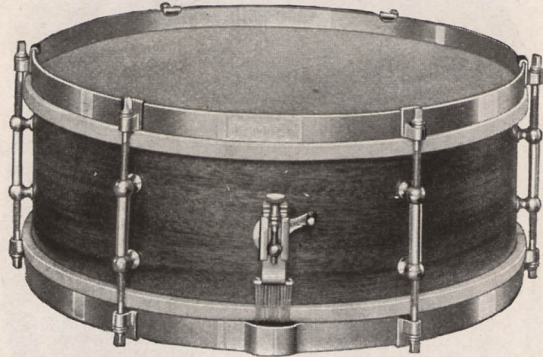
Upon receipt of \$2.00, we will ship to you any size drum and the balance will be payable on delivery, subject to five days' trial.

If the full cash price is sent with your order, the shipping expense will be lower, and if, after five days' trial, you do not wish to keep the drum, return it to us and we will return your money.

For prices see price list enclosed.



Perhaps You Prefer a Wood-Shell Drum?



Some of us have very strong preferences—we do not like to make changes.

We are born that-a-way and it goes against the grain to flop over.

Ludwig & Ludwig know this and that's why we have worked out a wood-shell model with the Ludwig & Ludwig special features attached.

We use a strongly re-enforced solid wood shell and metal hoops equipped for separate tension, similar to our all-metal drums.

In so doing, we have produced an instrument that is decidedly superior to any other wood shell drum on the market.

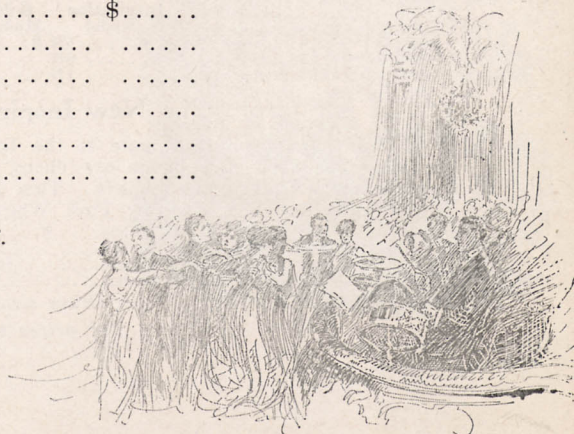
It is made in mahogany or walnut finish, with bright, polished nickel-plated metal hoops, which produces a very neat appearing drum.

All these drums are perfectly adjusted and equipped with patent muffler and strainer; your choice of snares.

Look for the Name, Ludwig & Ludwig on Every Separate Tension Drum

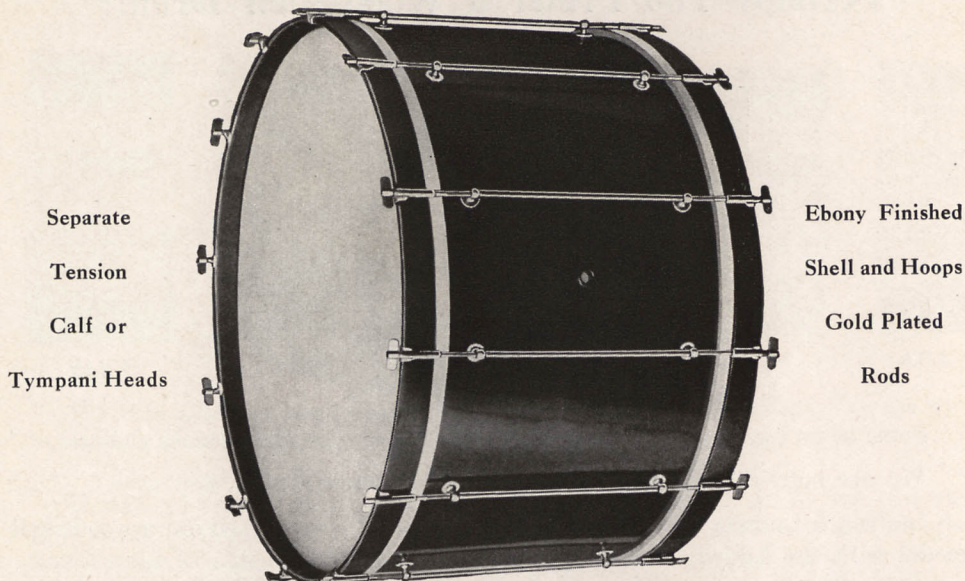
- No. 21—Size, 4 x14"..... \$.....
- No. 22—Size, 5 x14".....
- No. 23—Size, 6½x14".....
- No. 24—Size, 4 x15".....
- No. 25—Size, 5 x15".....
- No. 26—Size, 6½x15".....

For prices see price list enclosed.





The New Inspiration Model



Separate
Tension
Calf or
Tympani Heads

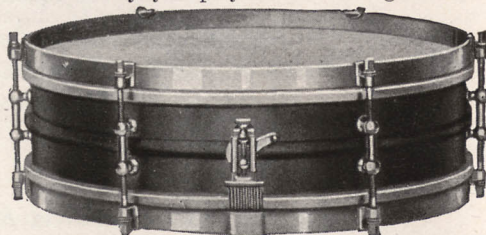
Ebony Finished
Shell and Hoops
Gold Plated
Rods

You Can Play Better on a Gold Drum

You wonder why, but it is true. The fact that you are using the strongest and most substantial drum built today, a drum with a most wonderful tone, a drum that is easy and a pleasure to play on, a drum that is handsome in appearance, instills confidence and a satisfaction that improves your work 100%. That is why you play better on a gold drum and why it is called

The Inspiration Model

The shell is made of spun brass, gun metal finish; the counter hoops and snare strainer are gold plated, a combination that has a most attractive appearance. This is a drum that is now used in many of the famous syncopated specialty orchestras and featured by some of the foremost artists in America. Can be had in all sizes:



Gun Metal Shell, Gold Trimming

	Inspiration Model	All Gold Model
No. 5A—4x14 inches.....	\$.....	5B \$.....
No. 6A—4x15 inches.....	6B
No. 1A—5x14 inches.....	1B

	Inspiration Model	All Gold Model
No. 4A—5 x15 inches.....	\$.....	4B \$.....
No. 2A—6½x14 inches.....	2B
No. 3A—6½x15 inches.....	3B

The New Inspiration Model Bass Drum

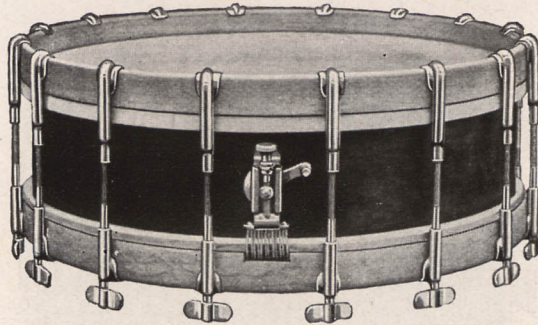
This bass drum is a mate to the Inspiration snare drum, made to match it in every way. The shell and hoops are ebony finish, hand polished; rods are all gold plated, equipped with best calf heads. This bass drum is very popular with the well known orchestras and now used by Paul Whiteman, Isham Jones, Paul Biese and others.

No. 102A—12x26 inches... \$.....	No. 106A—12x30 inches... \$.....
No. 103A—14x26 inches...	No. 107A—14x30 inches...
No. 104A—12x28 inches...	No. 108A—16x30 inches...
No. 105A—14x28 inches...	No. 109A—18x30 inches...

Other sizes quoted on request.
For prices see price list enclosed.



Ludwig Thumb-Rod Drum



The thumb-rod tension idea is a comparatively new wrinkle. It was a big improvement over its predecessor—and many of its admirers hate to “ditch” their old “stand-by.”

You don't need to, for the Ludwig Thumb-Rod Drum for use in vaudeville, burlesque or dance orchestra work will be a source of joy to you.

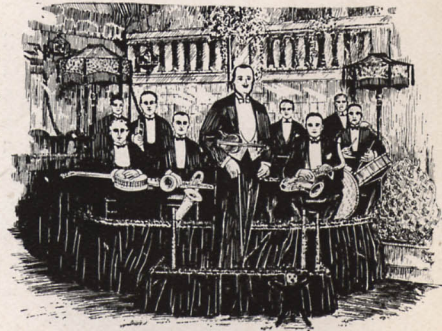
It is a single-tension drum and is made of a specially strong and highly finished solid walnut or mahogany shell, double braced.

The inside re-enforcement is of hard rock maple with counter hoops of natural maple finish; genuine calf heads and your choice of gut or wire snares.

The Ludwig patent snare strainer and muffler, sixteen improved thumb-screw rods, and special low counter hoops, make this a very neat appearing drum.

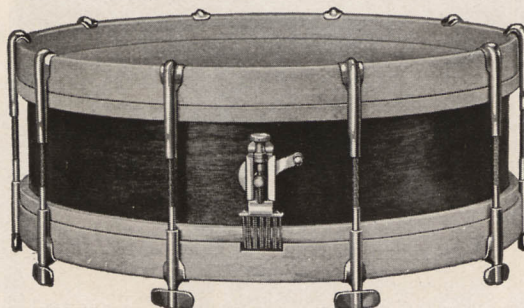
- No. 35—Size, 3 x14"..... \$.....
- No. 36—Size, 3 x15".....
- No. 37—Size, 4 x14".....
- No. 38—Size, 4 x15".....
- No. 39—Size, 5 x14".....
- No. 40—Size, 5 x15".....
- No. 41—Size, 6½x14".....
- No. 42—Size, 6½x15".....

For prices see price list enclosed.





Ludwig Thumb-Rod Drum



Economy is an important item with some of us.

If you are playing in the "movies," a small theatre, or doing dance work—and if you have an idea way down in your system that you should have a rattling good drum at a POPULAR PRICE—

Look into this.

This Ludwig Thumb-Rod Drum has a shell substantially finished inside and out and strongly re-enforced.

The hoops are hard maple, in natural finish, with nickel-plated thumb rods, patent muffer and strainer, best calf heads and choice snares.

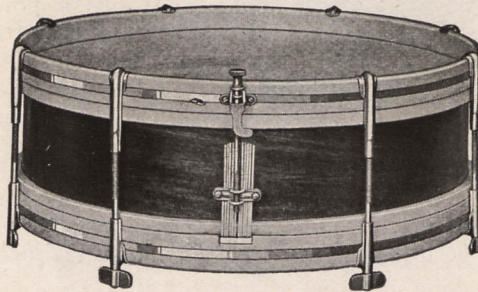
All the materials used in the manufacture of this drum are of high grade. It is the best drum of its class on the market at the price quoted. You get your choice of mahogany, maple or walnut.

No. 61—Size, 3	x14"	\$.....
No. 62—Size, 3	x15"
No. 63—Size, 4	x14"
No. 64—Size, 4	x15"
No. 65—Size, 5	x14"
No. 66—Size, 5	x15"
No. 67—Size, 6½	x14"
No. 68—Size, 6½	x15"

For prices see price list enclosed.



The Tango Model Snare Drum



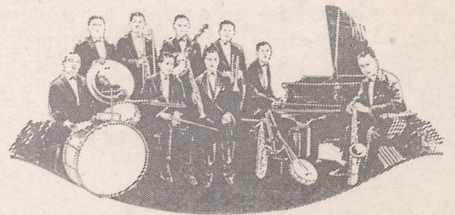
A drum for every occasion is our motto. Here is one for small combinations, for dance orchestra, small theatres, the home or the school. It is inexpensive, yet contains the best materials and the same care is used in the assembling that is applied to our most expensive drums. All the difference is that it is constructed on economical lines to meet the demands of the small orchestra drummer, student or beginner.

This professional model orchestra drum has every feature of the best drums we make. The heads are carefully selected, properly matched and tested so that this drum is really very snappy, easy to play and will give satisfaction for professional use.

Can be supplied either in dark mahogany or maple shell, natural counter hoops, thumb screw rods, nickel plated, patented snare throw off, silk wire snares.

- No. 91—Size, 3x12" \$.....
- No. 92—Size, 3x13"
- No. 93—Size, 3x14"
- No. 94—Size, 3x15"
- No. 95—Size, 4x14"
- No. 96—Size, 4x15"
- No. 97—Size, 5x14"
- No. 98—Size, 5x15"

For prices see price list enclosed.





Boys' Regimental Drum



The boys want a real snappy and serviceable drum. This is one designed for out door work, for school bands, fife and drum corps or bugle and drum corps.

It has a powerful tone, easy to carry and easy to play. All parts are very substantial, reducing the upkeep to a minimum.

The shell is made of maple natural finish and strongly reinforced. The counter hoops are of maple with a nickel plated band, making this a very

handsome appearing drum. Thumb rods and snare strainer are nickel plated. The heads are of the best quality calf. Sticks and slings included.

No. 269—Size 6½x14..... \$......

Boys' Rope Drum

This drum is a favorite. The general make up is the same as the above model except that it has rope instead of thumb rods. The heads are of the best quality, sticks and sling included. Size 15x11" over all.

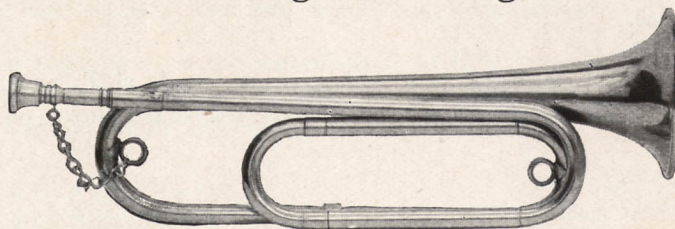
No. 257—Size 10x14..... \$......

No. 258—Size 10x15.....

No. 259—Size 12x15.....



U. S. Regulation Bugle



Here is an instrument you will need to complete your corps. This bugle is made according to government specifications, of superior quality brass, easy-slide action; mouthpiece with chain, key of G, slide to F.

No. 228—Price \$......

No. 714—Bugle cord, blue.....

No. 715—Bugle cord, red.....

For prices see price list enclosed.

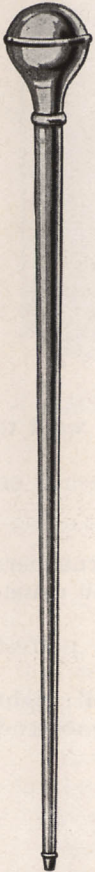


Drum Major's Baton

Ludwig Batons are supplied with brass or nickel-plated trimmings. Length, 48 inches. Extra heavy brass bell. Special presentation batons with trimmings, gold or silver plated, furnished upon request. The baton listed with gold cord is an exceptionally fine value and we know it will please you.

- No. 535—Baton with gold cord..... \$.....
- No. 536—Baton without cord
- No. 540—Baton with red, blue or yellow cord....
- No. 542—Baton with black and white cord.....
- No. 543—All Metal. Taper Tube. Nickel Plated throughout. No Cord and Tassels....

Note—Please specify whether brass or nickel and what color cord is desired.



No. 543



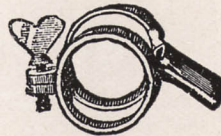
No. 535

Cords for Batons

- No. 537—Gold cord
- No. 538—Black and white cord.....
- No. 539—Red, blue or yellow cord.....

Composition Mouthpieces

- No. 224—For Wood or Gutta Percha Fifes, Screw Adjustment.. \$.....
- No. 225—For Metal Fifes, Screw Adjustment



Metal Fifes



The advantages of the Metal Fife are that they are more durable than the wood instruments, and are not subject to atmospheric or climatic changes. Their tone is exceptionally smooth, pure and flute like, and the intonation perfect.

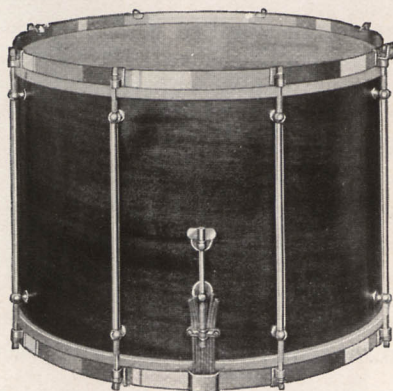
- No. 226—Brass, Nickel plated, Bb or C, Gutta Percha embouchure \$....
- No. 227—Same as No. 226, with metal embouchure.....

For prices see price list enclosed.





Ludwig Separate Tension Street Drum



If there is ever a time in your experience as a drummer when you want to "put it over big" it is in a street parade.

And if you want to back up your reputation as a drummer with results on a street parade, you need a real street drum to do it.

Ludwig Separate Tension makes a real street drum.

That is just what Mr. Ed Straight said, president of the Chicago Drummers Club, instructor of the largest professional drum corps in America—86 drummers, all using this drum.

Parade work is hard, but it will be a real pleasure if you use a perfect working, easy playing drum.

It plays easy and has wonderful volume; very strong, yet light shell; eight separate tension rods; three-quarter inch steel hoops; neat in appearance and has all the separate tension Ludwig features.

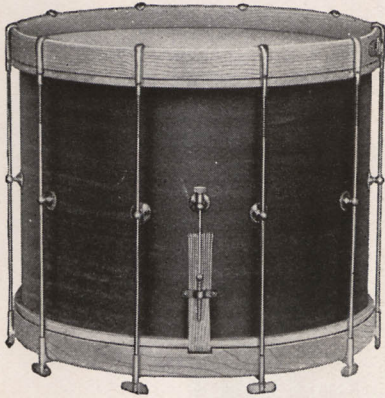
- No. 220—Size, 12x15"..... \$.....
- No. 221—Size, 10x16".....
- No. 222—Size, 12x16".....
- No. 223—Size, 12x17".....



Class A, Chicago Drummers Club



Our Center Support Thumb-Rod Street Drum



Choice of maple or mahogany shell.

This drum looks mighty good to that portion of the drummers' brotherhood who want a center support drum.

And it is just as good as it looks.

It is a very durable, dependable drum equipped with ten thumb rods.

The rods are supported in the center, which prevents their sagging or becoming bent, besides keeping each rod in the proper place. They are made of brass and nickel-plated.

This drum is equipped with silk wire wound snares, made especially for military use. The heads are special, selected for tone and durability.

- No. 216—Size, 12x15" \$.....
- No. 217—Size, 10x16"
- No. 218—Size, 12x16"
- No. 219—Size, 12x17"

Ludwig sticks and sling included.

Regimental Rope Drum

Certain organizations have exact specifications as to size and finish for their drummers' outfits.

To these specifications we conform exactly in the drums shown on this page.

We do even more than that.

We put Ludwig quality and workmanship in with it—and the result is a rattling good drum for the purpose.

The shell is accurately constructed and is light, but strongly re-enforced.

Choice of maple or mahogany highly polished shell, with roller cord hooks and metal bound ears. Equipped with finest grade heads. Choice of snares.



- No. 250—Size, 12x15" \$.....
- No. 251—Size, 10x16"
- No. 252—Size, 12x16"
- No. 253—Size, 12x17"

Ludwig sticks and sling included.

For prices see price list enclosed.





Professional Outfit No. 1



Many drummers prefer to buy the outfit complete. Here is one for the professional man that must have the best there is. This outfit is especially designed for theatre or concert work, and represents the best that we are able to manufacture. We guarantee that this outfit will give satisfaction to the most critical. Our advice is to get the best at the start. That is economy.

This Ludwig Professional Outfit No. 1 Consists of:

- | | |
|--|---------------------------------|
| 1—14x28" Mahogany Shell Bass Drum with best heads and Center Support thumb rods. | 1—Crash Cymbal Holder. |
| 1—4x14" All Metal Snare Drum (Size Optional). | 1—Ludwig Wood Block and Holder. |
| 1—Ludwig Drum Stand. | 1—Rattle and Holder. |
| 1—Ludwig Original Pedal complete. | 1—Chinese Tom-tom. |
| 1—12" Brass Pedal Cymbal. | 1—Tom-tom. |
| 1—14" Chinese Crash Cymbal. | 1—8" Triangle. |
| | 1—Castanet. |
| | 1—8" Tambourine. |
| | 1 pair—Hickory Drum Sticks. |

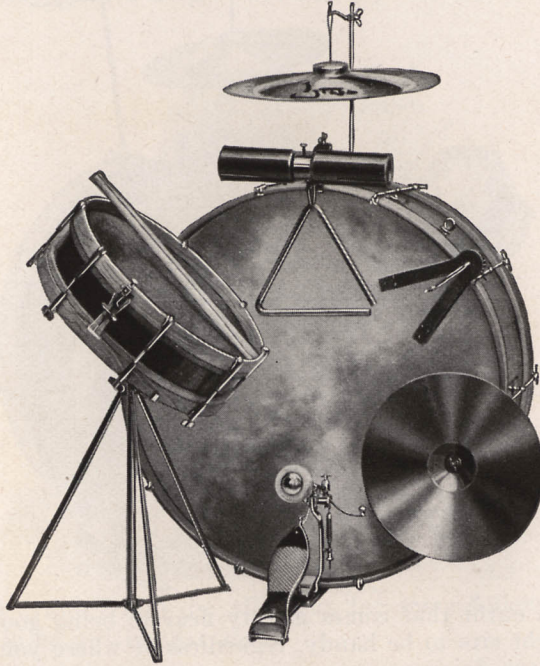
No. 980—Outfit complete as above..... \$.....

(No substitutions or omissions)

For prices see price list enclosed.



Professional Outfit No. 2



This outfit is a favorite with the jobbing drummer. It is especially designed for dance work. It is light to carry, yet substantial and practical.

The snare drum is equipped with our patented strainer and muffler; best material is used throughout. The snare drum is very snappy and easy to play. The bass drum is large enough to have plenty of volume, and not too large for convenience in carrying. The drum stand is our best and very solid. All traps are standard and of best quality. In all this is an ideal outfit for the jobbing drummer.

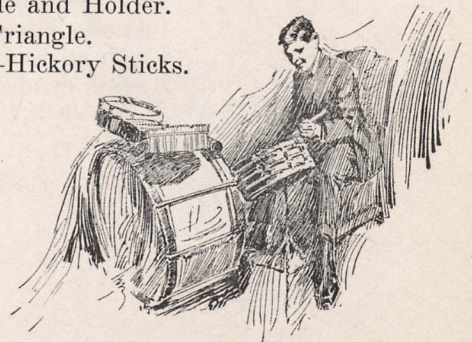
The Ludwig Professional Outfit No. 2 Consists of:

- | | |
|---|---------------------------------|
| 1—12x26" Mahogany Shell Bass Drum, best Calf Head, Center Support Thumb Rods. | 1—11" Brass Pedal Cymbal. |
| 1—3x15" Mahogany Shell, 8 Thumb Rods, New Model Snare Strainer and Muffler, best Heads. | 1—13" Chinese Crash Cymbal. |
| 1—Ludwig Drum Stand. | 1—Crash Cymbal Holder. |
| 1—Ludwig Jr. Pedal Complete. | 1—Ludwig Wood Block and Holder. |
| | 1—Rattle and Holder. |
| | 1—6" Triangle. |
| | 1 pair—Hickory Sticks. |

No. 981—Outfit\$.....

(No substitutions or omissions.)

For prices see price list enclosed.





Ludwig Complete "Tango" Outfit



Here is a drum outfit that comes mighty near to being good everywhere. It's just the right size to be handy, regardless of where you take it and the kind of work you are doing.

It's the easiest thing in the world to carry and handle when moving from one job to another.

For a Small Orchestra outfit you can get nothing finer. At the same time it works splendidly in the Home Orchestra.

For home entertainments, little dancing parties where someone plays the phonograph or player piano—the LUDWIG TANGO OUTFIT is the whole show.

More than one music room in well-to-do families have this outfit and they declare it's "the making of the party."

When it comes to price, we have priced it right. We know it is popular and that it is indispensable and we have made the price easily within your reach.

Look at the cut—all that the modern jazz drummer could wish for.

It includes 1 8x24" thumb rod bass drum.

1 3x12" snare drum, both drums with finest grade heads.

1 Ludwig Junior pedal, including cymbal holder and pair spurs.

1 11" pedal cymbal.

1 12" Chinese crash cymbal.

1 two-tone wood block with holder.

1 pair sticks and snare drum stand.

1 crash cymbal holder.

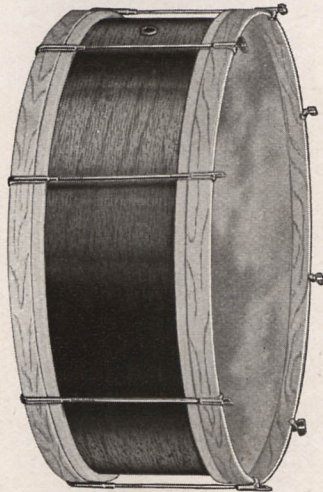
No. 963, complete..... \$.....

(No omissions)

For prices see price list enclosed.



Ludwig "Tango Model" Bass Drum



"Carrying a trunk" may be all right for some fellows, but the jobbing drummer hates to be put in that class.

What's the difference whether it's a trunk or a big bass drum? Everybody gets in your way. Everything seems to bump up against you.

Know all about it? You bet we do.

That is one of the big reasons for the existence of the Ludwig "Tango" bass drum.

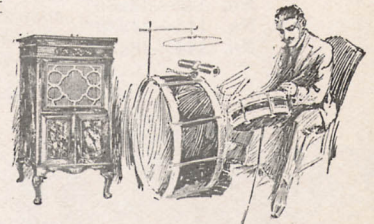
Here is a drum one can carry with comfort. No essential factor of quality has been sacrificed in its making. The tone is there. Light weight is there, and the drum has made a big and instant hit with the profession.

That fact—and the further one that Ludwig & Ludwig make it—is evidence enough for any reasonable man that this drum is just what you need.

With 8 thumbrods, mahogany or maple shell and finest grade heads. Here is a practical drum in every sense of the word for the small orchestra.

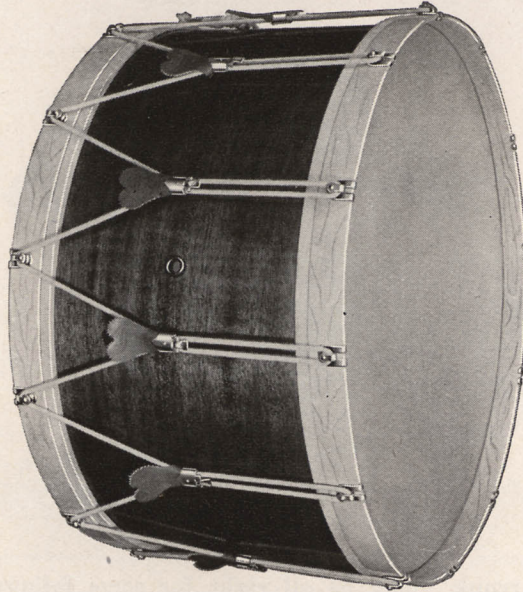
No. 960—Size, 8x24". Price..... \$.....
 No. 931—Size, 10x24". Price.....
 No. 932—Size, 10x26". Price.....

For prices see price list enclosed.





Regulation Standard Rope Drum



Can Be Equipped with Never Slip Drum Ears

Rope drums are the old stand-by and favored by many of the military bands. We know how to build rope drums. Ludwig Standard Regulation Rope Drum is light to carry, yet built strong enough to withstand the hardest kind of use.

The shell is of mahogany or maple, highly polished and with strong re-enforcements of hard maple hoops. It has counter hoops of maple, natural finish; roller hooks, patented metal bound ears, best cord and white calf heads.

It is built with all the Ludwig features and no better drum of this type is made.

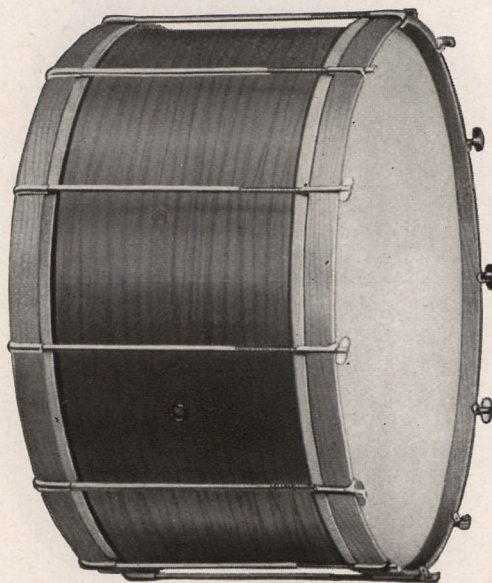
No. 134—12x24".....	\$.....	No. 145—18x30".....
No. 135—14x24".....	No. 146—12x32".....
No. 136—12x26".....	No. 147—14x32".....
No. 137—14x26".....	No. 148—16x32".....
No. 138—16x26".....	No. 149—18x32".....
No. 139—12x28".....	No. 150—12x34".....
No. 140—14x28".....	No. 151—14x34".....
No. 141—16x28".....	No. 152—16x34".....
No. 142—12x30".....	No. 153—18x34".....
No. 143—14x30".....	No. 154—14x36".....
No. 144—16x30".....	No. 155—16x36".....

Sizes not listed made to order. Price on never-slip ears on request.

For prices see price list enclosed.



Ludwig Special Bass Drum



This bass drum is called "Special" because it is designed to be the most practical for the majority, also on account of the special long tube, strong but light rods used on this drum.

The shell is made of laminated veneer, the grain of the wood crossed to obtain the greatest possible strength. Besides the regular half round enforcements on the edges of the shell they are braced with one to three additional enforcement strips on the inside according to size of the shell.

We can furnish it in either mahogany or maple; plain maple or black hoops; first quality calf heads. Our rods are made of brass and do not bind in the screws or sag in the center.

This type is exceedingly popular with the trade.

No. 69—12x24", 10 rods..... \$.....	No. 80—18x30", 12 rods.....
No. 70—14x24", 10 rods.....	No. 81—12x32", 12 rods.....
No. 71—12x26", 10 rods.....	No. 82—14x32", 12 rods.....
No. 72—14x26", 12 rods.....	No. 83—16x32", 14 rods.....
No. 73—16x26", 12 rods.....	No. 84—18x32", 14 rods.....
No. 74—12x28", 12 rods.....	No. 85—12x34", 14 rods.....
No. 75—14x28", 12 rods.....	No. 86—14x34", 14 rods.....
No. 76—16x28", 12 rods.....	No. 87—16x34", 14 rods.....
No. 77—12x30", 12 rods.....	No. 88—18x34", 14 rods.....
No. 78—14x30", 12 rods.....	No. 89—14x36", 14 rods.....
No. 79—16x30", 12 rods.....	No. 90—16x36", 14 rods.....

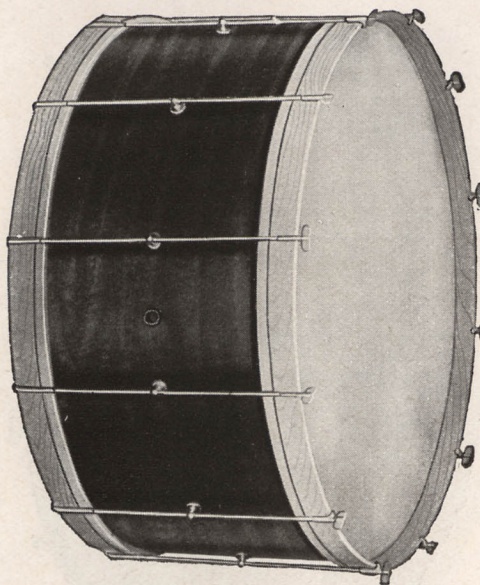
Sizes not listed made to order.

For prices see price list enclosed.





Ludwig Center Support Bass Drum



For the professional who wants a special bass drum for special work, this drum fills the bill.

Important features of the Ludwig center support rods are that they are light to carry and hold rigid.

By the use of a center support a lighter rod can be used.

This drum is neat in appearance, practical and durable.

The shell is made of laminated veneer, cross grain and special inside bands re-enforcing the center supports. They can be furnished in mahogany or maple. Natural finish counter hoops, best grade of calf heads.

All drums are carefully assembled, and we guarantee the rods to fit perfectly.

The shell is of rich, dark mahogany and strongly re-enforced with hard maple inside hoops. Counter hoops are made of hard maple with natural finish.

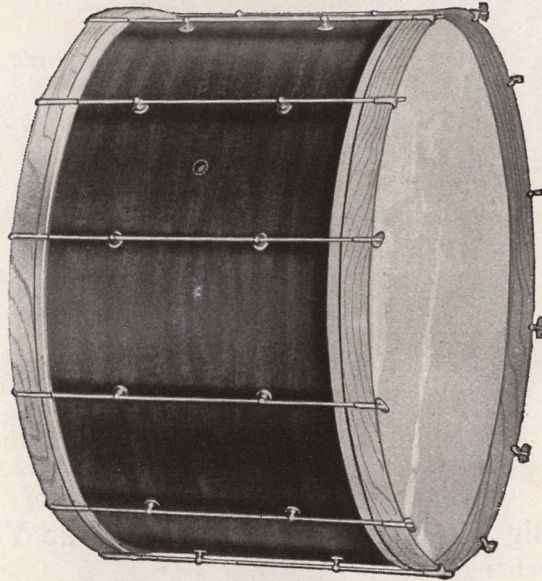
You will find this an ideal bass drum.

Rods		Rods	
No. 760—12x24" 10	\$	No. 771—18x30" 12	\$
No. 761—14x24" 10		No. 772—12x32" 12	
No. 762—12x26" 10		No. 773—14x32" 12	
No. 763—14x26" 12		No. 774—16x32" 14	
No. 764—16x26" 12		No. 775—18x32" 14	
No. 765—12x28" 12		No. 776—12x34" 14	
No. 766—14x28" 12		No. 777—14x34" 14	
No. 767—16x28" 12		No. 778—16x34" 14	
No. 768—12x30" 12		No. 779—18x34" 14	
No. 769—14x30" 12		No. 780—14x36" 14	
No. 770—16x30" 12		No. 781—16x36" 14	

*Sizes not listed made to order.
For prices see price list enclosed.*



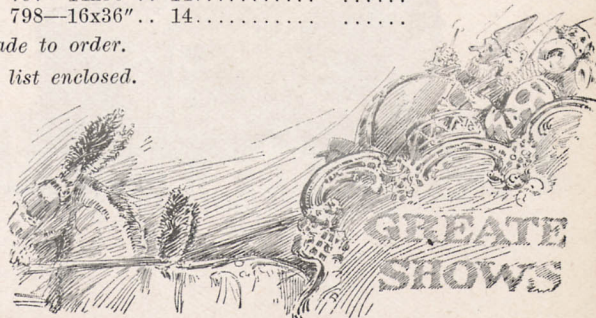
Ludwig Double Stud Rod Bass Drum



The Ludwig double stud bass drum is a substantially constructed drum with much of the weight of ordinary models eliminated. Double studs on each rod increase their strength and hold each one in place. For any shell 14" or over in width you will find this the ideal device for tensioning. Your choice of mahogany or maple, laminated veneer shell strongly re-enforced, finest quality heads. A drum that has no better. If you want more evidence, let us prove our claims. We will send any size listed on approval upon receipt of a small deposit.

No.	Size	Rods		No.	Size	Rods	
783	14x24"	10	\$.	791	14x32"	12	\$.
784	14x26"	12	792	16x32"	14
785	16x26"	12	793	18x32"	14
786	14x28"	12	794	14x34"	14
787	16x28"	12	795	16x34"	14
788	14x30"	12	796	18x34"	14
789	16x30"	12	797	14x36"	14
790	18x30"	12	798	16x36"	14

*Sizes not listed made to order.
For prices see price list enclosed.*





Comfort for the Bass Drummer



The Modern Method How many times have you refused to play bass drum on parade because the last one nearly broke your back?

Why not take it easy?

No more perspiring, backaches and sore shoulder for the up-to-date bass drummers. The new Ludwig Drum Carriage will do away with all this. This carriage will handle any size bass drum with ease and it gives the player a chance to watch his music and hold the tempo.

The wheels are ball bearing; pneumatic tires, light and detachable in a few seconds; a wood base stays on the shell. When ordering be sure to state size of your drum.

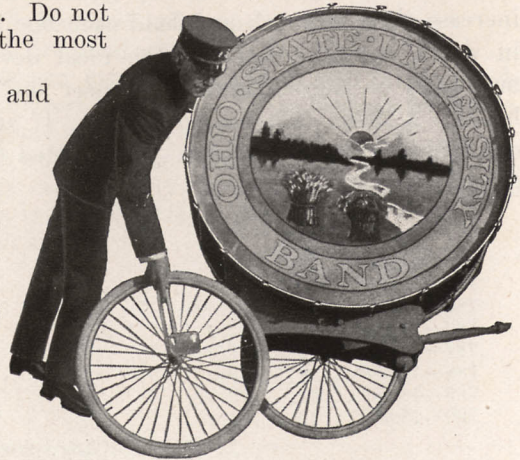
Let the Big Bass Drum Tell Them Who You Are

It pays to advertise, you know it does.

There is no better way to do it than with a bass drum, not only for parade work, but for the concert and dance hall as well. You want your name or the name of your organization before the public as often as possible and whenever possible. It builds up your business. Do not overlook this opportunity to get the most out of your bass drum.

We paint any design you desire and equip your drum with electric colored blinker lights operated by storage battery for parade work or from the ordinary lighting system of the house by simply using a plug in a light socket. Prices on application.

Special Lettering to Order Prices on Request



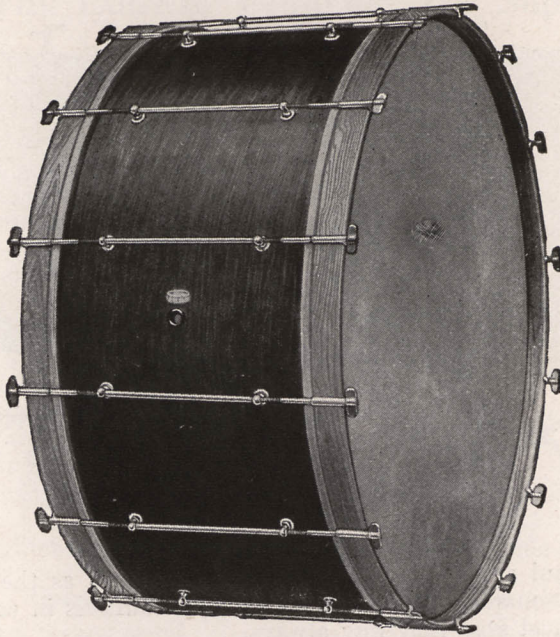
No. 99—Drum carriage complete..... \$.....

In ordering state size of your drum.

For prices see price list enclosed.



Ludwig Separate Tension Bass Drum



This is the bass drum we are proud of. It makes them all sit up and take notice. Imagine the finest grade of heads that can be made, put on a solid built shell with strong separate tension rods. Well, you know the result. *"It can't be beat, that's all."*

Bass drums represent a tidy little bit of money. Mr. Drummer doesn't throw his money away to the dicky birds.

He wants value received. He wants bass drums with dependable calf heads, shell substantially constructed; with rods that will not rust, bind or discolor.

That is just the kind of a drum we are offering on this page. In all its essentials it is A1 in quality from hoop to hoop.

It is just the instrument that makes a drummer your friend and a permanent customer.

A beautiful, rich and full tone is obtained on the Ludwig Separate Tension Bass Drum when both heads are turned to the same pitch—preferably low "G."

No.	Size	Rods	Price	No.	Size	Rods	Price	No.	Size	Rods	Price
100	12x24"	8,	\$.....	109	18x30"	12,	\$.....	114	12x34"	14,
101	14x24"	10,	110	12x32"	12,	115	14x34"	14,
102	12x26"	10,	111	14x32"	12,	116	16x34"	14,
103	14x26"	11,	112	16x32"	12,	117	18x34"	14,
104	12x28"	12,	113	18x32"	12,				
105	14x28"	12,								
106	12x30"	12,								
107	14x30"	12,								
108	16x30"	12,								

For prices see price list enclosed.

Special sizes made to order.





The Ludwig Tympani



Perfect tympani are a scientific product. Inasmuch as the kettles of your tympani act as resonators, they must not only be faultless in conformation and circle, but they must stay that way always.

The clear musical tone you require is produced by the head. The kettles enlarge and develop it.

In the manufacture of the Ludwig Tympani great care is given to accurate proportioning throughout in order to obtain an absolutely clear tone.

If the vibration of the heads is interfered with by even the slightest imperfection in the round of either kettles or hoops, they produce overtones or tones foreign to the fundamental tone required.

This, aside from the tonal fault, makes tuning very difficult. On the other hand, tympani of proper and accurate construction produce a tone in which the fundamental note predominates so strongly that it is easily distinguished—a feature that greatly facilitates ease of tuning.

A special feature of the Ludwig Tympani is an extra inside re-enforcement, consisting of a rim of pressed steel constructed of two-inch tubing pressed and rolled to a special shape and accurately spun into the kettles.

This special re-enforcement makes the drum so strong and rigid that a perfect round is retained, even under hard and constant use.

An equally valued feature is that the lugs are fastened to this steel ring instead of the kettles themselves. This throws the strain of the tension to that part of the drum which is able to stand it without the slightest injury. The placing of the lugs onto the special steel ring insures the greatest possible strength.

At the same time this prevents the lugs from bulging by getting bumped, which would cause the screws to bind.

For prices see price list enclosed.



Why Ludwig Tympani Are Superior

Here is the logical instrument for the "past master" in the drumming fraternity.

Even those who have had experience with tympani feel that the selection of their instruments is a matter of much care and study.

These same men find great satisfaction in dealing with us and getting the sound and good advice we can give them from our experience both as makers and players of tympani.

In the construction of Ludwig Tympani new and valuable features are added which make them the most highly perfected tympani of the day.

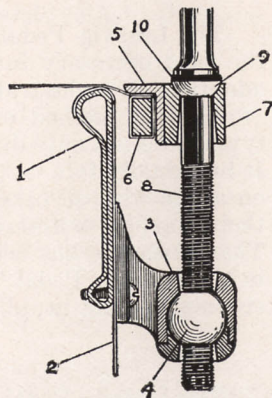
The kettles are made of the finest grade of copper and are hand hammered. The flesh hoops are of steel, both copper and nickel-plated, to insure them against rusting. They are carefully fitted into the steel angle counter hoops, making this part rigid and on a par with the high-grade construction of the rest of the instrument. The tension screws fit into a ball nut in the lug, causing absolute self-alignment and allowing the screw to work perfectly at any angle without the slightest binding.

You will find the illustration shown to be most interesting and worthy of careful study.

Follow the numbers and compare with the tabulated table of special features:

Special Features of the Ludwig Tympani

1. Special steel re-enforcement.
2. Hand-hammered copper kettle.
3. Bronze lug fastens to steel re-enforcement.
4. Ball self-aligning nut in lug.
5. Steel angle iron counter hoop, heavily plated and polished.
6. Metal flesh hoop.
7. Brass lug on steel angle iron counter hoop.
8. Double lead quick-tuning screw.
9. Steel cone washer—will not break.
10. Fibre flat washer to receive pressure—will not break.



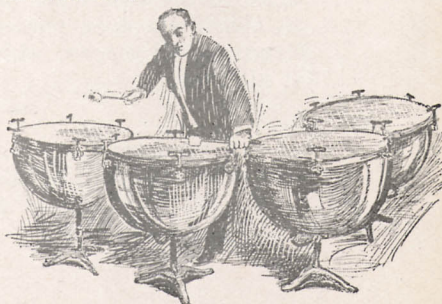
Set of Four Ludwig Tympani, Size 24", 25", 28" and 30".

You will quickly comprehend why you could not play any other tympani than a Ludwig and feel you had the best there is.

Equipped with finest grade genuine calf heads, manufactured in our own tannery.

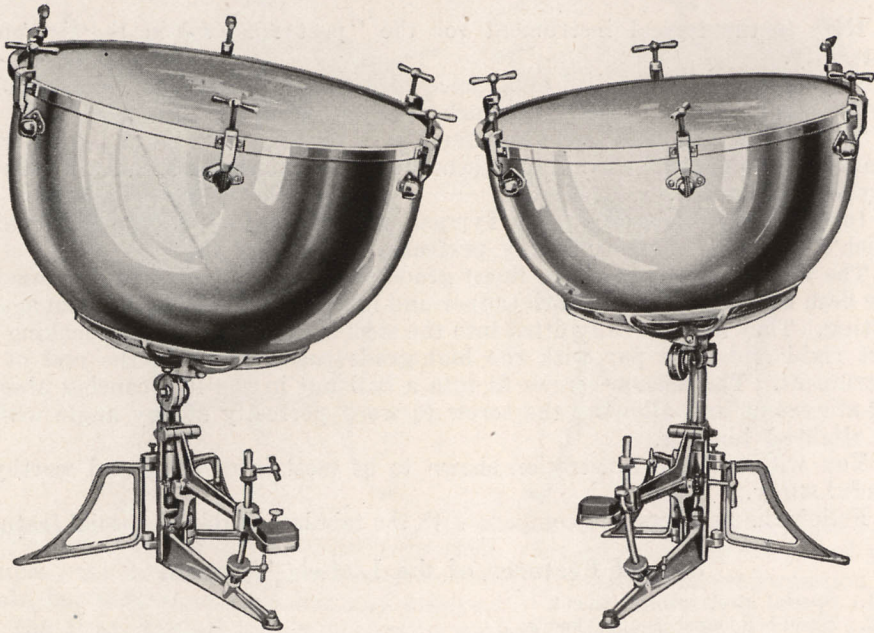
No. 276—Sizes, 25 and 28". Per pair..... \$.....

Other sizes made to order. Price list enclosed.





Ludwig Pedal Tympani



The Ludwig Pedal Tympani are the most progressive and at the same time the most necessary invention that has been applied to kettle drums since their adoption as orchestral instruments.

The old method of tuning tympani by means of six hand screws on each tympano is not only difficult but results in considerable loss of time and efficiency. It necessarily follows then that some means had to be found to place the tympani on a par with all other orchestral instruments; that is, to play all notes within their compass without interruption. The foot pedal seemed the only solution. That principle has been carefully worked out and developed to such an extent in the Ludwig Pedal Tympani that now it is possible to play an uninterrupted chromatic scale rapidly with ease and accuracy.

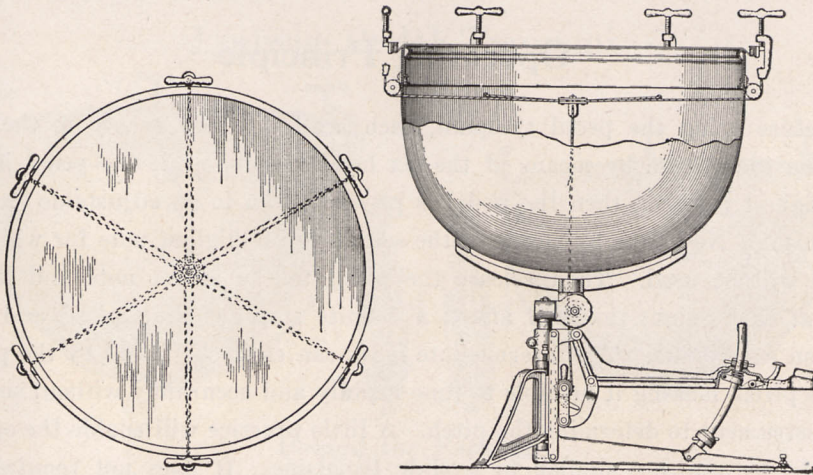
Working Principles

The Ludwig Pedal Tympani are tuned by means of six cables connecting the tension screws to one central connection which in turn is connected by one main cable to the foot lever pedal. The pedal acting on the main cable distributes an absolutely even tension to the six tension cables, thereby assuring an equal strain on all screws, which keeps the head even and affords a pure clear tone at all times.

Hand Screws Independent

Six hand screws remain on each tympano. They may be tuned with hand screws independent of the pedal mechanism.

For prices see price list enclosed.



The Foot Pedal

The strain on high notes is naturally greater than on low notes. The pedal, therefore, is equipped with an equalizing link toggle that equalizes the foot pressure, making an absolutely uniform pressure on the pedal for high or low notes and with no great effort. The pedals work so easily and smoothly that they can be operated by the pressure of your thumb.

Pedal Locking Device

The foot pedal is equipped with a patented friction clutch that locks at any point by slightly raising the toe of the foot, making it possible to hold the tone at any desired pitch.

Adjustment

The Ludwig Pedal Tympani may be used at any angle that is most convenient to the performer.

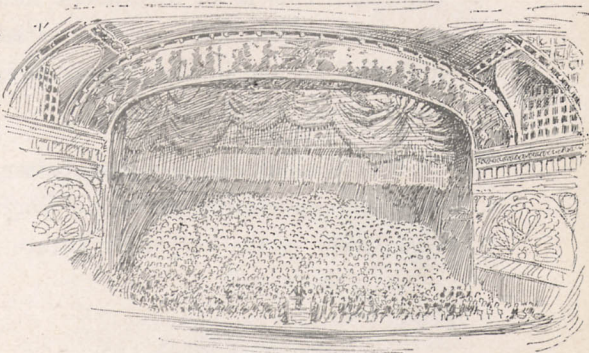
By means of a friction clamp and a universal joint, the tympani may be raised to a standing or sitting position; they may be tilted towards each other, forward, backward, sideways or each turn while in operation, to locate the desired beating spot, without changing any adjustment. All is done by friction.

General Construction

The Ludwig Pedal Tympani weigh but 70 pounds each, complete.

The kettles are made of finest grade of copper and are hand hammered.

The pedal and stands are made of bronze, nickel plated and highly polished. The cables are made of best grade steel piano wire and guaranteed to stand the wear they are intended for.





Operating Principle

Before using the pedal tympani, each head is tuned evenly to the lowest note on each drum by means of the six hand screws, while the pedal is up to the highest position, then the pedal is pressed down to an adjustable stop near the bottom. Now tune by means of the screws to the highest note for which that drum will be used. Then release the pedal to the lowest note and lock the stop at that point; this will afford a definite stop for the highest and lowest note on each drum. The intermediate notes can easily be found by the position of the pedal, making it possible to tune rapidly and accurately without sounding the instrument to determine the pitch. A little practice will enable the operator to tune by position similar to a slide trombone. It does not require much practice to tune them accurately.

Opportunity

The Ludwig Pedal Tympani afford exceptional opportunities for the progressive drummer who is ambitious, and desires to get out of the ordinary rut of everyday drumming. These instruments will help you get to the front in your profession. They make the work 90% easier; tuning is almost automatic. As a professional drummer, you owe it to yourself to have and use the best tympani the market affords, in order to develop your talents to the highest point of efficiency.

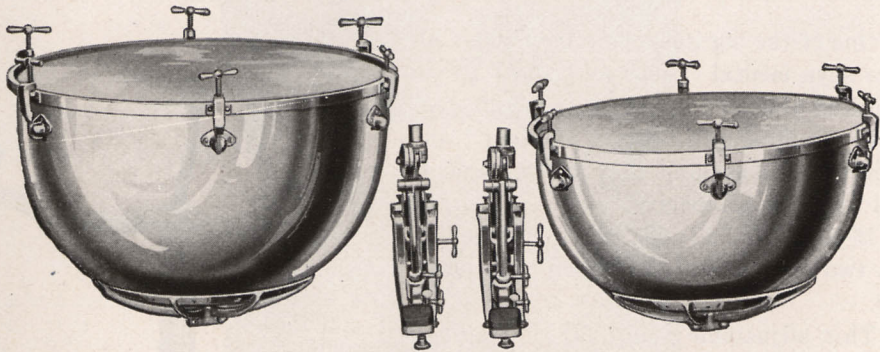
Investment

When you buy Ludwig Pedal Tympani, you should not consider it an expense. This is an investment that will pay for itself many times over, and in addition, you will have the satisfaction of knowing that you have the best and that no one in the profession is equipped better than you are if you use the Ludwig Pedal Tympani.

The present day requires better music. The public demands it and this is your opportunity to equip yourself with instruments that will be used exclusively in the very near future in all large orchestras.



Ludwig Pedal Tympani



Folded for Packing

The Ludwig Pedal Tympani will fit in ordinary trunks used for hand tympani. The trunks that are supplied from our factory are substantially constructed; only the finest quality fibre is used.

Modern Music

Modern composers are quick to take advantage of any new instruments that may be applied to an orchestra. They are quick to realize the possibilities of pedal tympani. With instruments of this kind it is possible to execute almost any kind of a passage that may be required in a composition no matter how difficult it may be. It is now possible for composers to write for tympani to suit the composition, not to suit the convenience of the tympanist, as they were compelled to do before the use of pedal tympani.

No Experiment

Mr. Joseph Zettleman, tympanist with the Chicago Symphony Orchestra, has used them the past season at Ravinia Park, and has pronounced them perfect in every way.

Mr. William Strelsin, tympanist with the New Symphony Orchestra of New York, is using a set of 25" and 28". "The action is perfect, the tone is rich and clear," is what Mr. Strelsin says.

Mr. White, tympanist with the Los Angeles Symphony Orchestra, is using four Ludwig Pedal Tympani. "They make my work 100% easier," is what Mr. White says.

Mr. Lawrence Manzer, tympanist with the Detroit Symphony Orchestra, is using a set of Ludwig Pedal Tympani. "They're wonderfully effective and simple; I find them very satisfactory," is what Mr. Manzer says.

The above are a few of the more prominent users.

Be convinced yourself. We guarantee satisfaction, or refund your money.

No. 275—Sizes 25" and 28". Price, per pair..... \$.....

The standard sizes are 25" and 28".

No. 274—24" only. Price..... \$.....

No. 273—26" only. Price.....

No. 271—27" only. Price.....

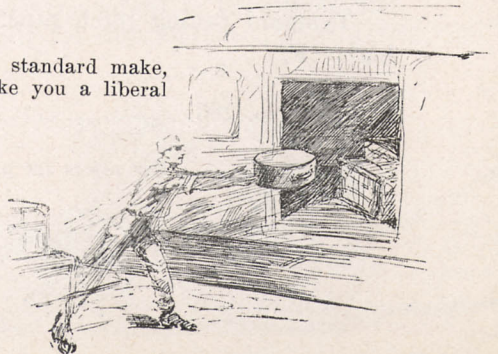
No. 272—29" only. Price.....

Other sizes made to order.

Exchange of Tympani

If you have hand tuning tympani of a recognized standard make, write us about our exchange proposition; we will make you a liberal allowance.

For prices see price list enclosed.





The Ludwig Adjustable Tympani Stand

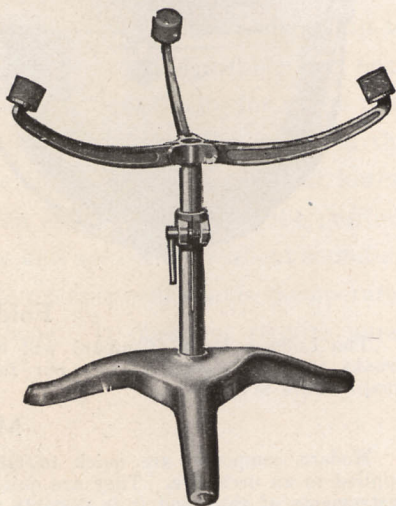
One of the big items in a drummer's life is to save mental "wear and tear" in the handling and moving of his instruments.

If anything will upset a pleasant frame of mind it is a stand that won't stand or will not fold compactly.

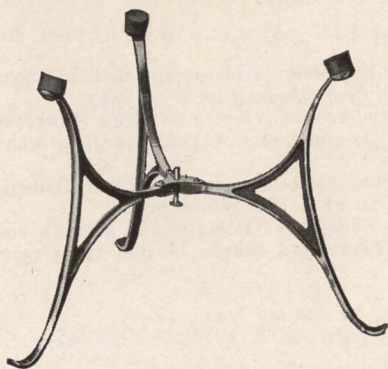
If you have had such an experience here are two styles—both of which will please you.

This adjustable stand fills a long felt want. It may be used for either a standing or sitting position.

It is strong, rigid and easy to regulate—for traveling purposes the upper part folds, while the lower part is detached from the base. It is handsomely nickel-plated and polished.



No. 281—Per pair...\$.



Ludwig Folding Tympani Stand

Made of steel, very strong, durable and light; handsomely nickel-plated and polished. Folds quickly and packs into small space, making it very convenient for traveling. This style supplied with Style 1 Tympani, unless otherwise ordered.

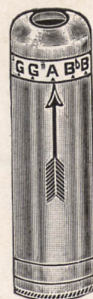
No. 282—Per pair.....\$.

Tympani Tuning Pipe

Tympani tuning pitch pipe, vest pocket size. Low "G" to high "F."

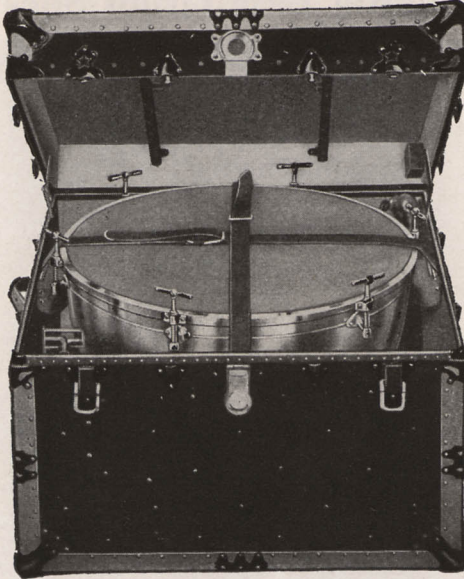
No. 283.....\$.

For prices see price list enclosed.





Ludwig Tympani Trunks



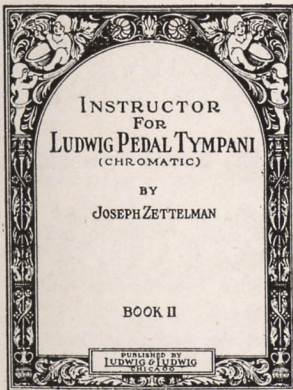
You have a nice little bunch of money tied up in your tympani. Naturally you don't want some careless baggage wrestler to ruin your disposition along with your instruments.

Get Ludwig Tympani Trunks. Check your baggage—look haughty at the fellow—go into the smoker—light up and be happy.

Your tympani are safe with Ludwig double fibre trunks.

- No. 294—For 25" Tympani..... \$.....
- No. 295—For 28" Tympani.....
- No. 293—Special Trunk for Pedal Tympani Stands.

Quotations on other sizes on request.



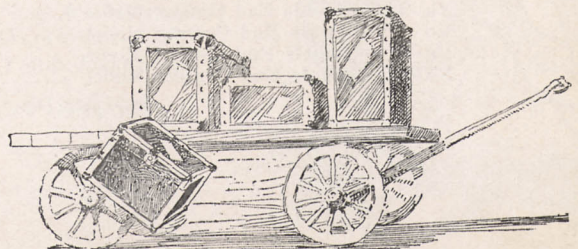
Modern Method for Machine Tympani

This method contains excerpts Tympani parts from fifty modern orchestra compositions, showing the practical use of pedal tympani, also thirty-five exercises for ear training and the use of pedal mechanism, and a general description of their construction and care.

No tympani player can afford to be without this book. It is now ready for distribution.

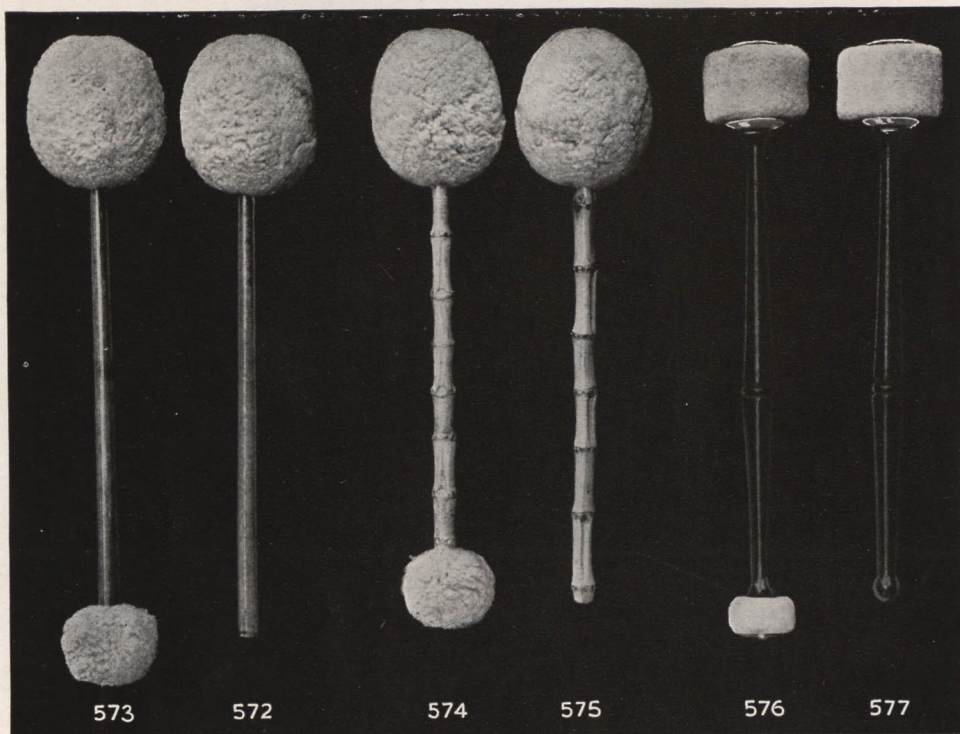
- No. 723..... \$.....

For prices see price list enclosed.





Ludwig Bass Drum Sticks



A Violinist often pays as much for a bow as he does for his Violin. The point is to get the best possible tone out of the instrument. A good bass drum stick properly selected for the result desired certainly improves the tone of a bass drum.

The numbers 573-572 Concert Models designed for tone and execution. Soft and light, yet the ball is of a size and texture that will bring forth a full rich tone. The handle is of a smooth hard rattan light, flexible and strong. The ball is of felt carefully built up to be soft and firm. The outside cover is of natural lamb's wool that is very durable.

The numbers 574-575, the same as above except that the handle has ridges affording a firmer grip.

The numbers 576-577 designed for volume and generally used in large brass bands, and for street work. The handle is made of Cherry wood and polished natural. The ball is of best grade hard white Spanish felt with two retaining washers of metal to hold the ball firm. This is a practical stick built for hard usage and we claim the best of its kind on the market.

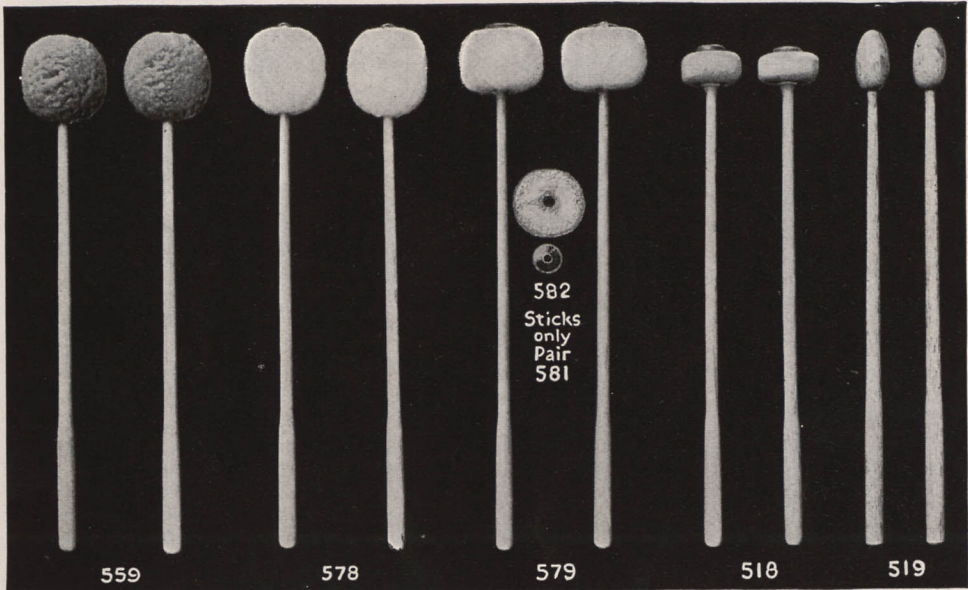
No. 573—Double End Concert Model \$.
 No. 572—Single End Concert Model
 No. 574—Double End Concert Model
 No. 575—Single End Concert Model

No. 576—Double end bass drum stick,
 solid felt balls, rosewood handle, price . . .
 No. 577—Single end bass drum stick,
 solid felt ball, rosewood handle, price . . .

For prices see price list enclosed.



Ludwig Tympani Sticks



To obtain the best results it is essential to carefully select the tympani sticks that are best suited for the purpose or the effect desired. We list a complete assortment. The following description will be of assistance in selecting the correct sticks.

Number 559 is the new Christiano Model. A felt ball is mounted on best grade hickory handle, covered with natural lamb's wool, especially selected soft, fluffy and durable. This is a very good stick for all around work.

Number 579 is the Jos. Zettelman model and used considerably by Symphony and large picture house orchestras where one man is assigned to tympani only. This model can be had in heavy and medium. The ball is fastened to the stick by a screw button for the purpose of interchanging and replacing. Balls and sticks may be purchased separately. The balls are made of best grade white piano damper felt, carefully sewed so that the seams will not be felt while playing. The hickory handles are of the best that can be had.

Number 578 is the standard light models for general work where one drummer is used for the entire battery. They are especially desirable for smaller orchestra and light work. The balls are made of best grade white damper piano felt. The sticks are of the best grade hickory.

Number 519 is a solid hickory stick with polished wood balls used for special effects in symphony orchestra, grand opera or moving picture theatres.

Number 518 is a hand solid felt stick for tremendous fortissimos used in large orchestras, bands, or theatres. This stick is also used very effectively on snare drum in jazz playing with snares on or snares off, or for snare drum and tympani together when no time is allowed for change of sticks.

No. 559—Christiano Model, Pair \$	No. 582—Balls only, Pair \$
No. 579—Zettelman Model, Pair	No. 578—Standard Model, Pair
No. 580—Zettelman Heavy, Pair	No. 518—Hard felt ball, Pair
No. 581—Handles only, Pair	No. 519—Polished maple ball, Pair

For prices see price list enclosed.





Reliable Service

Ludwig & Ludwig

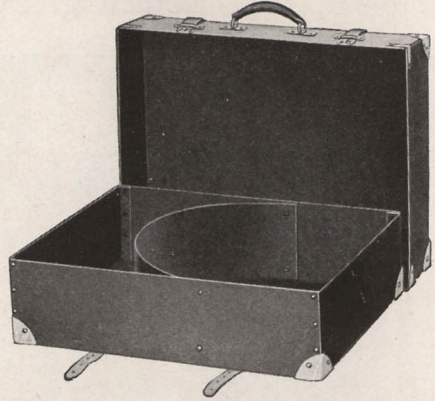
Fibre Drum and Trap Cases



Suit Case, Double Compartment

This suit case model is our most popular type. It will accommodate any size drum from 3x14 inches to 6½x15 inches and has two compartments for traps. Made of best grade fibre, strongly reinforced with metal binding, special lock and clasps. A very handsome case.

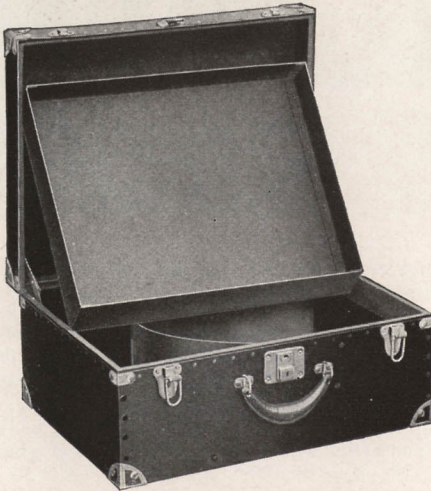
No. 277—As illustrated. Price.... \$.



The Original Carry-All Telescope Case

This is a favorite type, suitable to carry any amount of traps. Made of best grade fiber that will outwear several of the imitation. Strongly reinforced with metal corners. Genuine leather straps; neat in appearance.

No. 278—For 14-inch drum. Price..... \$. *9.00*
 No. 279—For 15-inch drum. Price.....
 No. 280—For 16-inch drum. Price.....

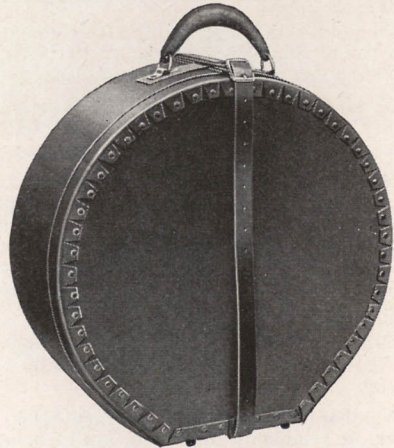


Suit Case Model With Tray

Special strong case with a 2½" tray to carry cymbals, extra head on hoop and small traps, or dress suit.

This case has a strong wood frame and special lock and clasps, best grade fibre and special corner reinforcements—strong and light.

No. 303 for 4x14" and 5x14" Drum. Price \$.
 No. 304 for 6½x14" Drum..... Price
 No. 305 for 4x15" and 5x15" Drum. Price
 No. 306 for 6½x15" Drum..... Price



Round Drum Case

How many times has your drum case rolled away from you?

Here is one that won't; it is solid and stands where you put it. This case looks neat and is strong; made of best quality hard fibre. Leather strap.

No. 288—For 14-inch drum. Price..... \$.
 No. 289—For 15-inch drum. Price.....
 No. 290—For 16-inch drum. Price.....

For prices see price list enclosed.



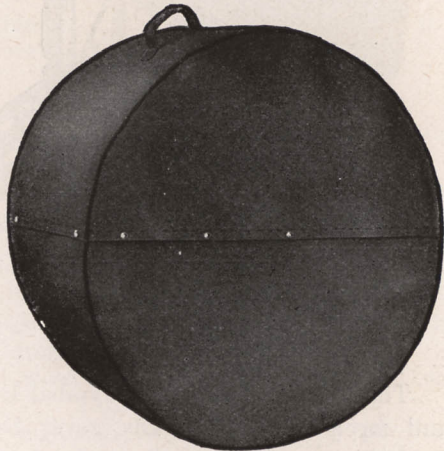
Mackintosh Waterproof Drum Cases

These flannel-lined Mackintosh Drum Cases are indispensable to the professional drummer who is called upon to do transient work. They make a complete and absolutely waterproof cover for the drum.

Snap buttons make it easy to put on and take off and add very little to the weight. They are strongly re-enforced at the seams. The following are shell measurements:

Bass Drum

- No. 808—For 8x24" Bass Drum....\$.....
- No. 809—For 12x24" Bass Drum.....
- No. 810—For 14x24" Bass Drum.....
- No. 811—For 12x26" Bass Drum.....
- No. 812—For 14x26" Bass Drum.....
- No. 813—For 16x26" Bass Drum.....
- No. 814—For 12x28" Bass Drum.....
- No. 815—For 14x28" Bass Drum.....
- No. 816—For 16x28" Bass Drum.....
- No. 817—For 12x30" Bass Drum.....
- No. 818—For 14x30" Bass Drum.....
- No. 819—For 16x30" Bass Drum.....
- No. 820—For 18x30" Bass Drum.....
- No. 821—For 12x32" Bass Drum.....
- No. 822—For 14x32" Bass Drum.....
- No. 823—For 16x32" Bass Drum.....
- No. 824—For 18x32" Bass Drum.....
- No. 825—For 12x34" Bass Drum.....
- No. 826—For 14x34" Bass Drum.....
- No. 827—For 16x34" Bass Drum.....
- No. 828—For 18x34" Bass Drum.....
- No. 829—For 14x36" Bass Drum.....
- No. 830—For 16x36" Bass Drum.....

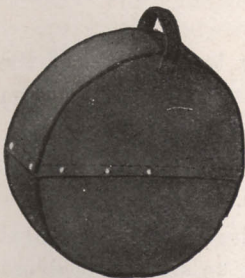


Avoid mistakes. Specify size of shell only, not over all.

Snare Drum

- No. 831—For 3 x14" Snare Drum.....\$.....
- No. 832—For 3 x15" Snare Drum.....
- No. 833—For 4 x14" Snare Drum.....
- No. 834—For 4 x15" Snare Drum.....
- No. 835—For 5 x14" Snare Drum.....
- No. 836—For 5 x15" Snare Drum.....
- No. 837—For 6½x14" Snare Drum.....
- No. 838—For 6½x15" Snare Drum.....
- No. 839—For 12 x15" Snare Drum.....
- No. 840—For 10 x16" Snare Drum.....
- No. 841—For 12 x16" Snare Drum.....
- No. 843—For 12 x17" Snare Drum.....

Avoid mistakes. Specify size of shell only, not over all.

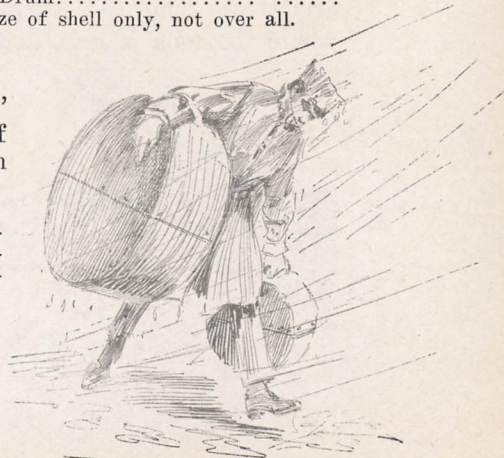
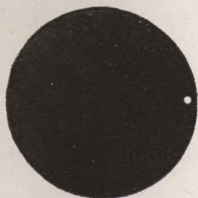


Fibre Disk Head Protector

This is another "safety first" article. It protects the head of drum when traps are carried in the case.

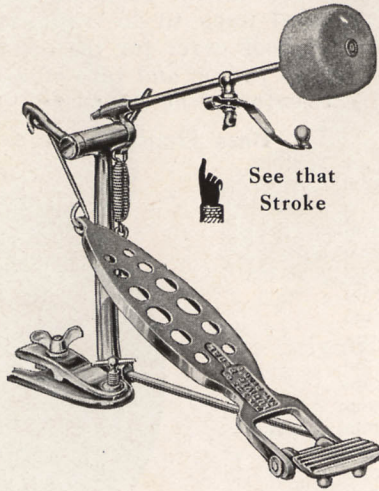
- No. 354—14" \$....
- No. 355—15"
- No. 356—16"
- No. 357—25" \$....
- No. 358—28"
- No. 359—30"

For prices see price list enclosed.





The Original Ludwig Pedal



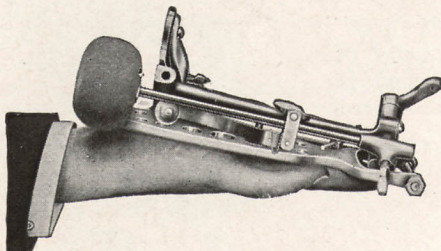
The Ludwig Drum and Cymbal Beater is a perfect product—both musically and mechanically. It has never been equalled for smoothness of action, mechanical accuracy and production of good drum tone.

It is the only floor pedal that has an action in unison with the movement of the foot. It is the only pedal made with a balance so perfect that it operates with as little effort as it takes to beat time.

It is the first floor pedal ever made that has the direct lever action of the swing pedal without its unproportionately long drum obstructing beater arm and the excessive size and weight of the overhead pedal.

The Ludwig Drum and Cymbal Beater won its way into the leading theatres of every large city in the country in less than six months.

And it brings out the best tone in your drum. Direct lever action; natural arm stroke tone; the beater arm is set slightly to the right to strike the drum where the tone is best, and to clear the foot in motion; immediate and full response in unison with every touch of your foot.



It has a direct lever action, a long powerful stroke—adjustable to any volume. The tone is that produced by the natural arm stroke.

For prices see price list enclosed.



Sixteen Points That Have Won Success for the Ludwig Pedal

1. It is made throughout of iron and steel, with every part designed for durability.
2. It weighs but 35 ounces.
3. It folds in a second into a surprisingly small parcel (9x3½ inches).
4. The entire pedal and cymbal arm is handsomely nickel-plated and polished.
5. It fastens on the drum with a double clamp grip which, while absolutely rigid, does not mar the hoops.



6. It attaches so that the beater ball strikes the bottom of the drum and a little to the left, where the best drum tone is obtained.
7. The beater arm is no longer than a bass drum stick from hand to ball.
8. The principle of action is the same as if struck by hand, insuring "arm struck" tones.
9. The stroke is longer than any other pedal made (floor or swing) and the beater is consequently capable of delivering a more powerful blow.
10. The adjustable leverage and adjustable beater rod make it possible to get any desired length of stroke and volume.
11. The spring is made of finest steel wire taxed to only one-tenth of its capacity.
12. The tension of the spring can be adjusted to any degree by turning a convenient knurled thumb nut.
13. The cymbal striker can be thrown on or off with a touch of the finger when bass drum alone is desired.
14. The cymbal striker is attached to the beater rod with a clamp that is universally adjustable and which can be regulated to emphasize or subdue the cymbal.
15. Owing to the direct lever action which operates the pedal in unison with the movement of the foot, the speed is phenomenal.
16. The workmanship of the whole is so ingenious—the balance so perfect—that it can be operated with as little effort as it takes to beat time!

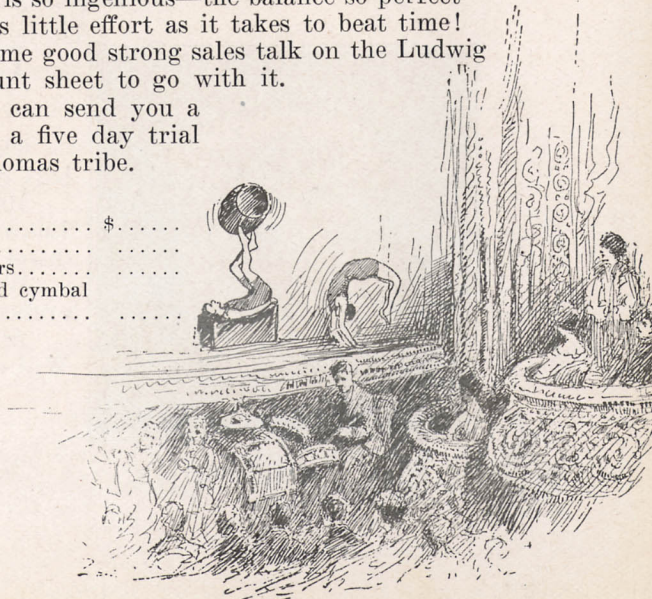
Now we are handing you some good strong sales talk on the Ludwig Beater—but there is no discount sheet to go with it.

We mean it—every word—and we can send you a Ludwig Drum and Cymbal Beater on a five day trial offer if you belong to the doubting Thomas tribe.

Prices

No. 310—Pedal only	\$.....
No. 311—Pedal with cymbal holder only
No. 312—Pedal with cymbal holder and spurs.....
No. 313—Pedal with cymbal holder, spurs and cymbal muffer

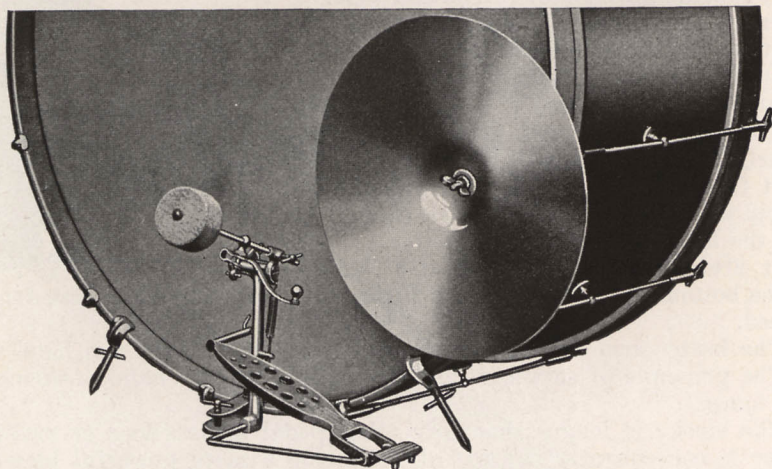
For prices see price list enclosed.





The Ludwig Side Pedal

(Patented)



Lack of space or other causes sometimes makes a side pedal a necessity—but a poor one means irritation and cuss words.

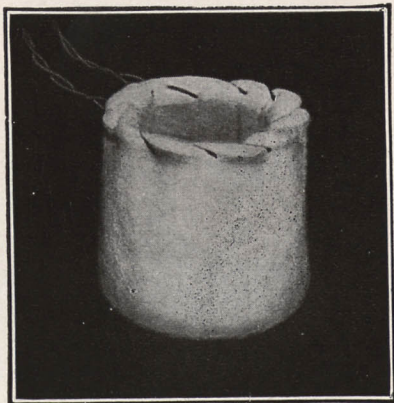
We know.

That's why we made a good one—the best there is. The side pedal enables you to place tympani or bells in front of you. The bass drum may be placed on the side. Often the condition of the theatre makes it necessary to place the bass drum on the side. It will be found that this pedal works perfectly, the action is not at all interfered with.

The side pedal is a side foot board only that can be attached to any regular Ludwig Pedal. If you already have a Ludwig Pedal, get the side pedal only. If not, see page 43 for prices of the regular pedal.

- No. 326—Side Pedal Attachment only..... \$......
- No. 327—Side Pedal Complete

For complete pedal see page 43.



Lamb's Wool Felt Cover for Pedal Ball

This cover will improve the tone of your bass drum.

Made of best grade lamb's wool, it fits any Ludwig pedal and produces a soft, full bass drum tone.

We recommend it for theatre and concert orchestras.

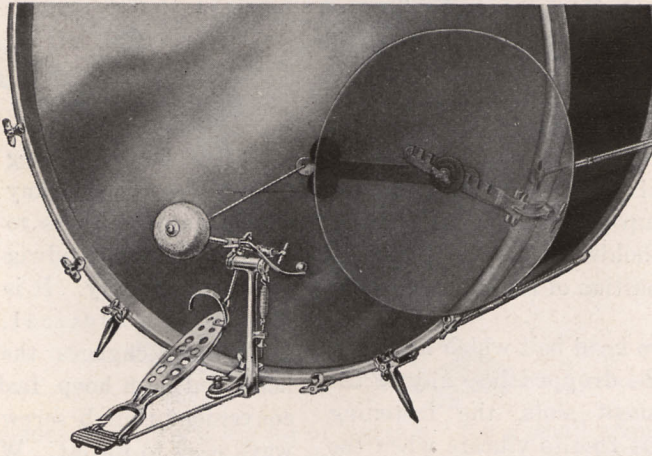
Attached or detached in a few minutes. Will slip over the regular pedal ball.

- No. 329 \$......

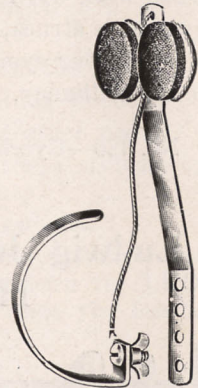
For prices see price list enclosed.



Ludwig Patented Cymbal Damper



In concert orchestras where exactness is essential, the after ring of the cymbal is annoying. This can be entirely eliminated by using the Ludwig Cymbal damper. Its action is very similar to that of the piano action damper. The cymbal is perfectly free to ring as long as the pedal is in action, but to stop the ring or after tone of the cymbal simply raise up on the foot board which allows the beater to come away from the drum and in turn apply a tension on the cord that draws the soft felt pads against the outer edge of the cymbal. After a short time its use will become almost automatic. A small toe clip is supplied with the damper to be attached to the foot board to make it possible to apply a greater pressure for very short beats or crashes. The spring steel band that supports the felt pads should be attached in the rear of the cymbal, and on the cymbal holder so that the felt pad does not touch the cymbal until the tension is applied by the cord, which is fastened to the beater arm.



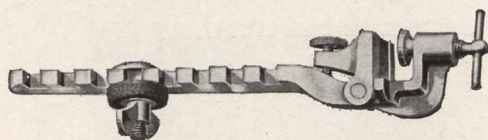
No. 345—Cymbal Damper and toe clip..... \$.....

For prices see price list enclosed.





Ludwig Cymbal Holder

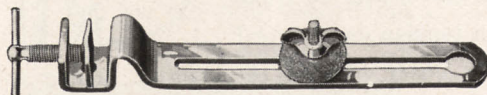


An original and distinguished feature of this cymbal holder is its universal adjustment clamp which makes it possible to fasten the holder at any angle regardless of the condition of the counter hoops.

The square head bolt which holds the cymbal may be dropped into any of the eight adjustment slots, the fastening being firm, but free to vibrate when the cymbal is struck, thereby increasing the tone of your cymbal and adding greatly to its brilliancy.

No. 320—Cymbal Holder only \$....

Ludwig Junior Cymbal Holder



The Ludwig Junior Cymbal Holder made of pressed steel with a broad swivel clamp grip which is sure to hold on any hoop. The screw bolt holding the cymbal is adjustable in a slot, constructed in a way that will not weaken the cymbal holder.

No. 321—Cymbal Holder only \$....

Ludwig Spurs—Style 1



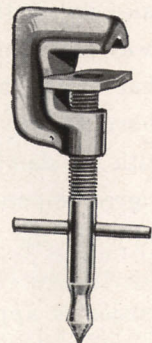
The accompanying illustration makes any verbal description as to design of the Ludwig Spur unnecessary. It is thoroughly practical. The clasp engages the hoop and flesh hoop, fastening with a convenient thumb screw which is always easy to get at. While the grip is perfectly rigid, it does not mar the hoop.

Spurs should be used on the reverse side to which pedal is attached.

No. 323—Spurs only, per pr., \$....

Ludwig Spurs—Style 2

Style 2 is a very practical spur. It fastens to hoop only, not gripping the flesh hoop. Hook is made of steel casting, nickel plated. Spur is made of steel with a sharp point and non-marring swivel. This type spur will hold on either front or back of the bass drum.

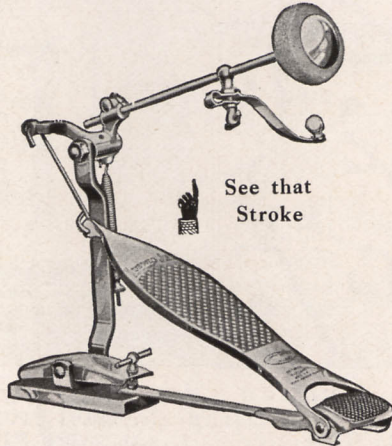


No. 324—Per pair.... \$.....

For prices see price list enclosed.



Ludwig Junior Pedal



When it comes to getting a big lot of "action" for a small amount of money, we refer you to the quickly responsive action of the LUDWIG JR. BASS DRUM PEDAL.

Here is an action that seems to never wear out or get "off the job."

We don't claim for it quite the style of the regular Ludwig Pedal.

The Junior Pedal has not quite the finish or style of our other pedal.

Any of you fellows who have gone down in your jeans for a stylish sky piece for your best girl know that style runs into big money.

You also know that utility can be had without "putting on airs."

We have been mindful of the fact that even the best of drummers find money "tight" at times, and out of this knowledge has been born the LUDWIG JUNIOR PEDAL which gives results and service and costs you less in coin.

Has it quality and the features of the Ludwig Pedal?

Yes, indeed!

All features of the original Ludwig Pedal are in the Ludwig Jr., but its construction is on an economical basis and you get the benefit of it.

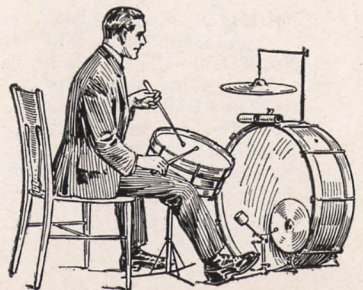
We guarantee that it is perfect. Try us on that.

We know how to build pedals—we kicked 'em long enough and the past twelve years of manufacturing have taught us economy. Look at the cut.

A glance will show that it is there with the action. It is the lightest pedal on the market, weighing but 27 ounces. Substantially constructed, and we guarantee it to withstand the very hardest usage.

No. 314—Pedal, Cymbal
Holder and Spurs.... \$.

For prices see price list enclosed.



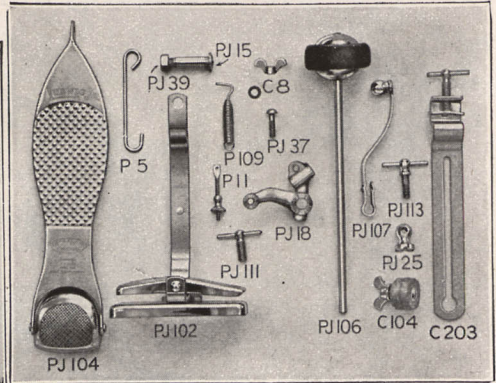
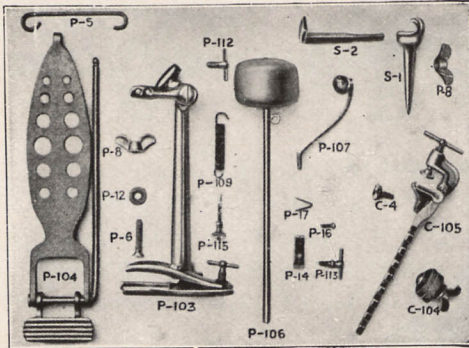
Reliable Service

Ludwig & Ludwig

Pedal Repair Parts

Original Ludwig Pedal

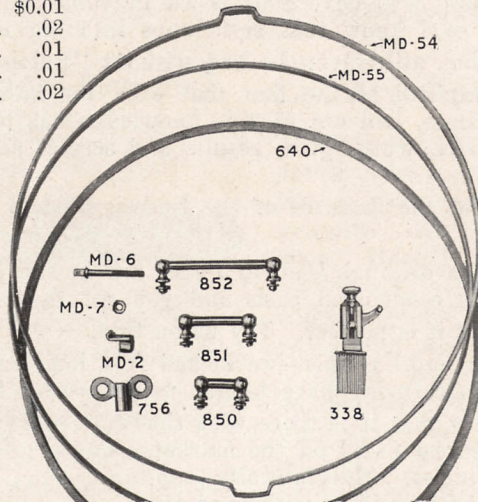
Ludwig Junior Pedal



No.	Price	Postage	No.	Price	Postage	No.	Price	Postage
P-104.....	\$.....	1 lb.	C-4.....	\$.....	\$0.01	PJ39.....	\$.....	\$0.01
S-2.....		\$0.02	C-105.....		.10	PJ102.....		1 lb.
P-5.....		.02	C-104.....		.02	C104.....		\$0.02
P-6.....		.01	P-8.....		.01	PJ104.....		.04
S-1.....		.02	P5.....		.02	PJ106.....		1 lb.
P-8.....		.01	C8.....		.01	PJ107.....		\$0.02
P-112.....		.01	P11 (P-115).....		.02	P109.....		.01
P-109.....		.01	PJ15.....		.04	PJ111.....		.01
P-115.....		.02	PJ18.....		1 lb.	PJ113.....		.01
P-12.....		.01	PJ22.....		\$0.02	C203.....		.10
P-106.....		1 lb.	PJ37.....		.01			
P-14.....		\$0.01						
P-113.....		.02						
P-16.....		.01						
P-17.....		.01						
P-107.....		.02						

Note—Please use prefix letters when ordering these pedal parts.

Ludwig All Metal Drum



Repair Parts

- No. MD-54—Counter hoop, snare side; state size..... 1 lb. \$.....
- No. MD-55—Counter hoop, batter side; state size..... 1 lb.
- No. 640—Flesh hoop..... 6 oz.
- No. 850—Lug for 4" drum..... 4 oz.
- No. 851—Lug for 5" drum..... 4 oz.
- No. 852—Lug for 6½" drum... 4 oz.

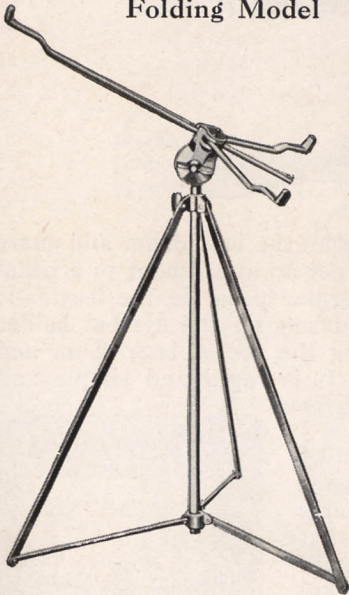
- No. MD-6—Collar screw..... 2 oz. \$.....
- No. MD-7—Collar screw washer..... 4 oz.
- No. MD-2—Drum hook..... 4 oz.
- No. 756—Ludwig drum key..... 2 oz.
- No. 338—Patent snare strainer and muffler..... 6 oz.

For prices see price list enclosed.



Ludwig Drum Stands

Folding Model



To do your best your drum must be at a convenient height, at the correct angle and *solid*. This stand has all these features.

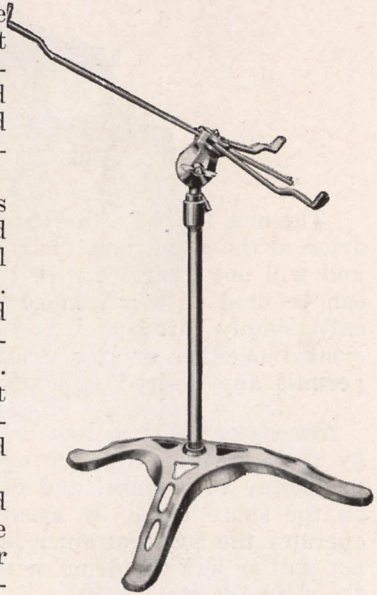
The Ludwig is the strongest and most substantial drum stand made. It is very neat and as light as is consistent with solidity. Made of the best material, handsomely plated and polished.

It is easily and quickly adjustable to any height or angle. The sup-

porting arms are also set at an angle in order to raise the drum and prevent the snare head from touching the center of the stand.

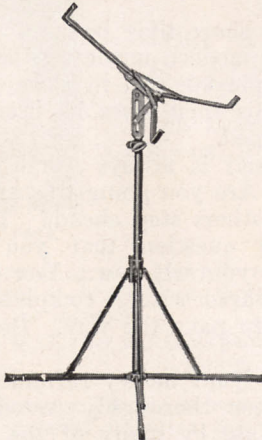
No. 331—Folding Model..... \$......

Theatre Model



No. 332—Theatre Model..... \$......

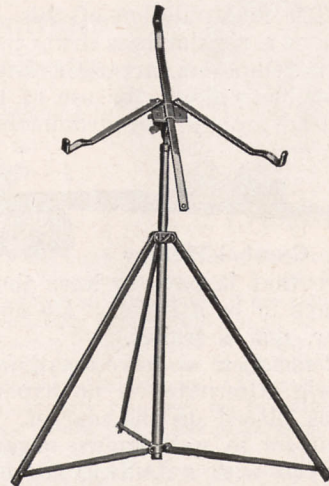
Hamilton Drum Stand



This is the best stand offered at the price. Folds into package 19 1/4" and weighs but 35 ounces. All parts handsomely nickel plated and polished.

No. 333..... \$......

Junior Drum Stand



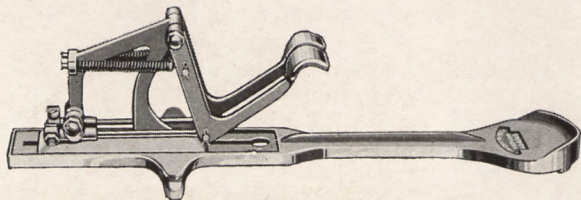
A small and economical stand. Folds into small space.

No. 334..... \$......

For prices see price list enclosed.



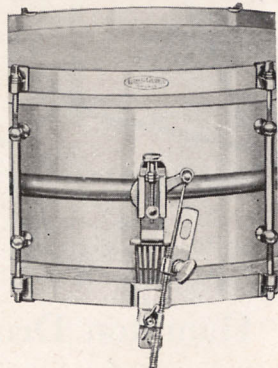
The New Ludwig Alternator



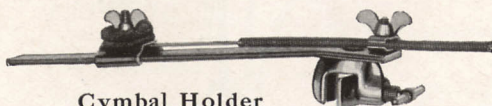
The new Ludwig Alternator is a pedal that muffles the bass drum and snare drum at the same time. It is a substantial pedal, not an attachment to a pedal and will not interfere with the action of your regular pedal in the least. It can be used with any make because it moves and acts on the cymbal holder only, simply throwing it out of action, facilitating the use of bass drum and cymbal together or bass drum separate at will. It is rapid and simple and permits any desired adjustment of the cymbal striker.

Alternator has two foot levers, both to be operated by the left foot, together or separately. One lever to operate the cymbal and one to operate the snares on the snare drum by means of a small wire that operates the snare strainer lever, in a way that will not pull or jerk the drum or move or wobble the snare drum or the stand.

The general construction of the Ludwig Alternator is very substantial, nothing to get out of order, always dependable, yet light for transport. The base is made of aluminum, and is detachable.



The manipulation of this Alternator after a short time becomes as automatic as a regular bass drum pedal, by its use the modern music can be played as the composers, arranger, and leader wants it played, and in a way that is impossible without the use of this invention. This then gives its users a decided advantage over drummers not yet so equipped.



Cymbal Holder

aware that it pays to have the best and be prepared with a complete outfit. It pays to be a leader. Do not wait for others to pave the way. Be a trail blazer, not a trailer.

Remember, we have a satisfaction guarantee or your money refunded. The Ludwig Alternator is no experiment. It has been thoroughly tested before it was placed on the market. Already it is in use by many of the leading drummers in well known organizations. Will fit any make of drum that is equipped with a Ludwig snare strainer.

- No. 346—Alternator Complete \$.....
- No. 347—Alternator with Ludwig snare strainer.....

For prices see price list enclosed.

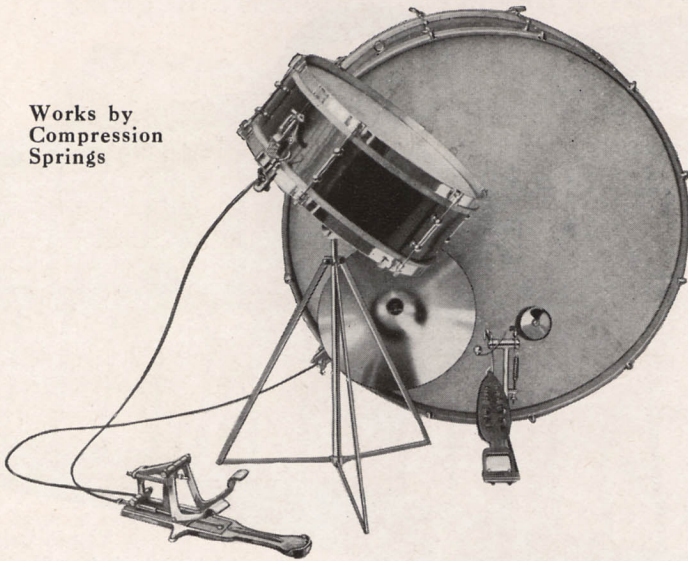
A lead is always worth a great deal. Are you going to stand aside while others step ahead? This is a serious question that you should put to yourself now. You are well

and be prepared with a complete outfit.



The Alternator in Playing Position

Works by
Compression
Springs



Muffles the Cymbal and Muffles the Snares with a Foot Pedal!

The Alternator has proven to hundreds of drummers that it is a wonderful aid in interpreting the most modern music. The best equipped are in demand. What it has done for others it can do for you. We list only a few of our prominent users.



Joseph Frank

Just a few Testimonials Used in Isham Jones' Orchestra

The Ludwig Alternator is just the thing for my work, it works great.

JOS. FRANK
Isham Jones' Orchestra.



L. L. Brancel

"I am now using your new Alternator and must say that it is the best thing I ever bought for the money."

WALTER SODERBERG,
Duluth, Minn.

"The Alternator I have just received from you is the greatest invention for the trap drummer I have ever used or seen. It will revolutionize the art of professional drumming."

J. C. MATTIX,
Kokomo, Ind.

"This is the sixth week I have been using the Alternator and while at first I looked at it in the light of an experiment it has rapidly become a necessity to me. For the up-to-date drummer in any line of work it is the most modern appliance ever made to gladden the heart of the percussion man. I thank you for the opportunity you gave me to purchase one and can assure you it has given complete satisfaction.

"With best wishes for your continued success,

I am,"
L. L. BRANCEL,
St. Paul, Minn.



Ludwig Bells



These bells are the best steel band and orchestra bells that money can buy.

We say that flatly. We can prove it. Lots of them say "steel is steel." So it is but not all steel is good bell steel. "Ludwig Bell Steel" produces a clear, sustained tone, no wavers or overtones; vibrations are perfect—not harsh, yet penetrating, and with exceptional carrying power.

"Ludwig Bell Steel" is close grained and hard, and will take nickel and polish well. Bells made of cheap stock are a detriment to the user.

Every drummer plays bells today. He has to—or he will be classed a "dead one."

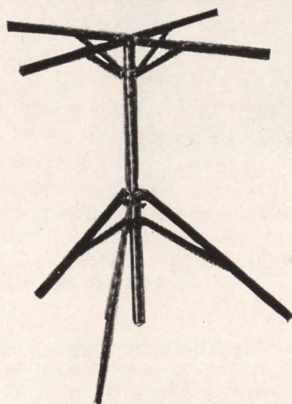
The popularity of Ludwig Bells is due to five principal points:

1. The use of Ludwig Special Alloy Steel, made for bells.
2. Bars, $1\frac{1}{4} \times 1\frac{5}{16}$ inch, not too narrow and not too wide, for ease in playing.
3. Tone quality rich and pure.
4. Bars are triple-plated over copper.
5. Folding fabrikoid case convenient to carry.

- No. 380—25 bars (2 oct.) C to C chromatic, bars $1\frac{1}{4} \times 1\frac{5}{16}$, low pitch. \$
- No. 381—30 bars (2½ oct.) G to C chromatic, bars $1\frac{1}{4} \times 1\frac{5}{16}$, low pitch. \$

For prices see price list enclosed.

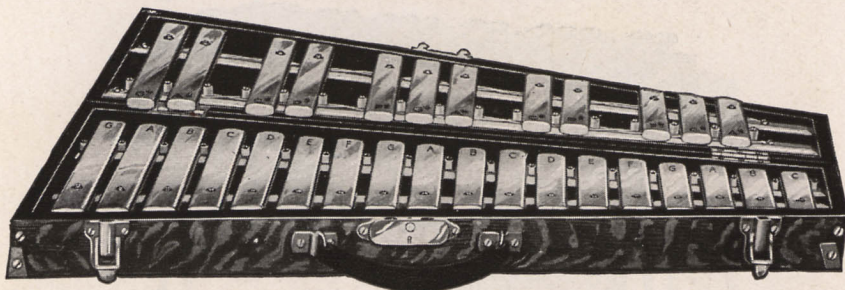
Bell Stand



A strong adjustable folding model stand. Adjustable from 17 inches to 25 inches. Folds like a music stand to $14\frac{1}{2}$ ".
 No. 385 \$



Deagan Roundtop Orchestra Bells



The performer who has always used the old style flat top bells is inclined to think there is nothing better.

This is not really so. "Seeing is believing."

Take a look at the Deagan Roundtop Bell. Run a scale on them—try a glissando. Now you're converted. We told you so. That's something you couldn't do on a flat topped bell nohow.

It is true glissandos are not generally written for bells, but you must be fly nowadays and fill in a little. Most bell parts are too dry.

As their name indicates, they are rounded on the top so that they have no sharp edges to cut the mallets and have also the further advantage of producing a full, clear tone even when struck a glancing blow.

Another thing, their distinctive shape tends to eliminate entirely all excessive overtones or counter-harmonies, resulting in a tone of perfect clearness and purity.

In addition to the tops being rounded, the underside of each bar is also curved, presenting a very small surface to the felt on which it rests. This permits of the greatest possible freedom in vibration and very materially increases the volume and improves the quality of tone.

Deagan Roundtop Bells combine, in addition to the desirable features mentioned, a smart, distinctive grace, freedom from annoying light reflection so common to polished surfaces of flat top bells, reduction in weight with increased tonal volume and, above all, absolute perfection in tuning.

Deagan Roundtop Bells are triple-plated and polished and mounted in quarter sawed oak folding cases.

Bars $\frac{7}{8} \times \frac{3}{8}$ inch

No. 1120— $2\frac{1}{2}$ Octaves, G to C Chromatic, 30 Bars.....

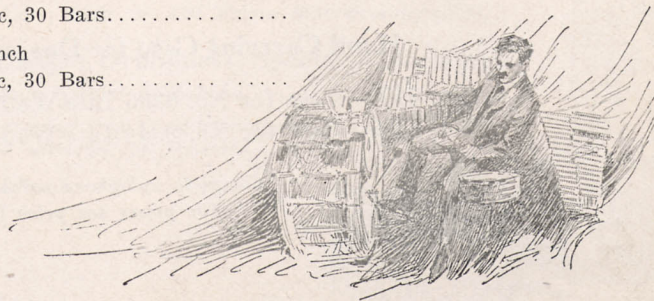
Bars $1 \times \frac{7}{8}$ inch

No. 1123— $2\frac{1}{2}$ Octaves, G to C Chromatic, 30 Bars.....

Bars $1\frac{1}{4} \times \frac{7}{8}$ inch

No. 1229— $2\frac{1}{2}$ Octaves, G to C Chromatic, 30 Bars.....

For prices see price list enclosed.





Deagan Lite-Wate Xylophone



Total length of instrument, 35½ inches; height, 25 inches.

To provide the lightest *practical* xylophone with resonators possible to build was the aim in designing the Deagan Lite-Wate.

It is intended, particularly, for the drummer who does not specialize on xylophone exclusively, yet who wants, at a moderate price, an instrument which produces that desirable quality of tone obtainable only from a Deagan xylophone with resonators.

The xylophone measures 25 inches high over all, the proper height for playing in sitting position, but at small additional cost we can supply extension legs which will increase the height sufficiently for playing in standing position.

Bars are of standard quality Nagaed, thoroughly seasoned, and the instrument is finished throughout in the best possible manner.

Bars, 1¼x5⁄8 inches.

- No. 8366—2½ Octaves, F₃₃ to C₆₄ Chromatic, 32 bars..... \$.
- No. 8344—3 Octaves, C₄₀ to C₇₆ Chromatic, 37 bars.....
- No. 6644—Floor rack extension legs.....

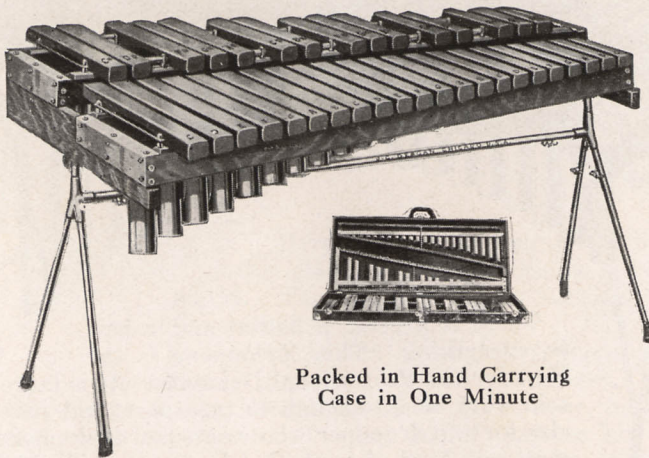
Hand Carrying Case for Deagan Lite-Wate Xylophones

- No. 6400—Case for No. 8366 Lite-Wate Xylophone..... \$.
- No. 6399—Case for No. 8344 Lite-Wate Xylophone.....

*Complete xylophone catalogue on request.
For prices see price list enclosed.*



Deagan Drummers' Special Xylophone



Packed in Hand Carrying
Case in One Minute

The Drummers' Special combines minimum size with maximum tone. It possesses a tonal volume and quality that compares more than favorably with large professional instruments. It is good enough for high class solo work, and, at the same time, small enough for use in orchestra pits where space is at a premium.

This model is specially designed to promote lightness and at the same time preserve the peerless quality of Deagan Xylophone tone. Extra selected Nagaed bars, $1\frac{1}{4}$ inches wide by $\frac{7}{8}$ inch thick, together with specially designed, light weight resonators (one for each bar) and special fittings, go to make up this exceptional instrument. The resonators, which fit inside the frames when the instrument is packed, are constructed of light weight, highly tempered bell metal, which results in a combination of strength and perfect resonance.

An ideal Xylophone for the jobbing drummer.

The frames on which the bars and resonators are mounted are of quarter-sawed white oak and the floor rack is very rigid when erected and can be set up or taken apart in but a minute's time without the use of tools.

All metal parts are highly polished and triple nickel-plated. All wood parts are hand polished.

No. 844—3 Octaves, C40 to C76 Chromatic, 37 Bars.....

Three pairs Assorted Mallets included with each of the above instruments.

All instruments will be tuned to Low Pitch A—440 unless otherwise specified.

Hand Carrying Cases for Deagan Drummers' Special Xylophones

No. 669—Case for 844 Drummer's Special Xylophone.....

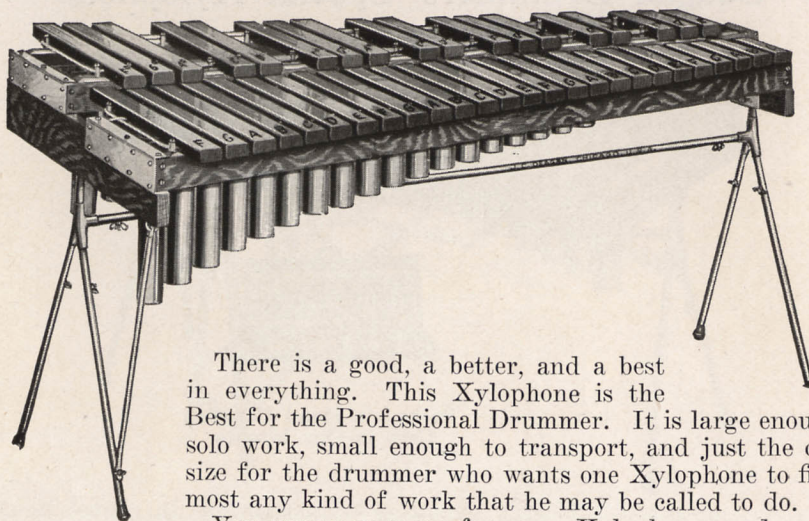
*Course of instruction for playing free to each purchaser.
Complete xylophone catalogue on request.*

For prices see price list enclosed.





Deagan Professional Xylophone



There is a good, a better, and a best in everything. This Xylophone is the Best for the Professional Drummer. It is large enough for solo work, small enough to transport, and just the correct size for the drummer who wants one Xylophone to fill into most any kind of work that he may be called to do.

You may pay more for some Xylophones and you may get some for less, but none will give you more value or fit your requirements better than this model.

The bars are of five-year-old Nagaed wood and are mounted on oak frames over Deagan patent resonators, the whole being mounted on Deagan All-Steel Floor Rack.

Ninety per cent of the Xylophones with resonators in use today are Deagan Professional instruments.

Bars $1\frac{5}{8} \times 1\frac{1}{8}$ -inch

- No. 865—3 Octaves, C to C Chromatic, 37 Bars.....Price \$.....
- No. 870—3½ Octaves, F to C Chromatic, 44 Bars.....Price \$.....
- No. 872—4 Octaves, C to C Chromatic, 49 Bars.....Price \$.....

Four to six pairs Assorted Mallets included with each of the above instruments.

De Luxe Wheel Rack included as standard equipment with No. 1721.

Course of Instruction for playing free to each purchaser.

All Deagan instruments tuned to Universal Low Pitch A-440.

We can furnish trunks for Deagan Professional Xylophones. See page 39.

Trunks and Carrying Cases for Deagan Xylophones

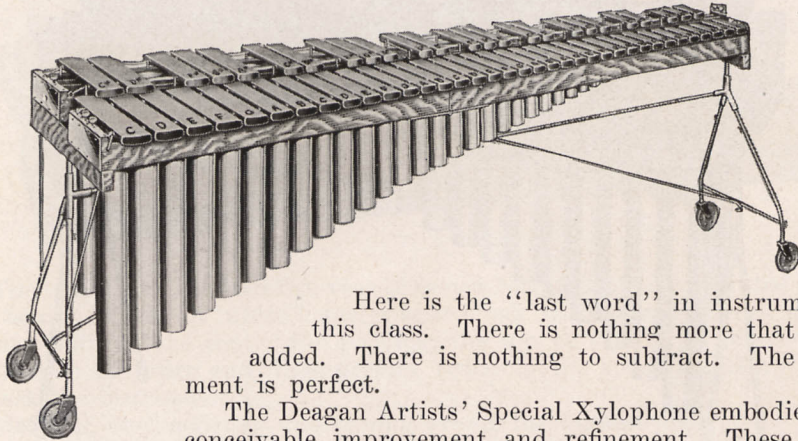
Cases are made of best quality fibre, light and strong. Trunks are made of fibre strongly reinforced.

- No. 676 case for No. 865 Xylophone.....Price \$.....
- No. 677 case for No. 870 Xylophone.....Price \$.....
- No. 1318 trunk for No. 865 Xylophone.....Price \$.....
- No. 1320 trunk for No. 870 Xylophone.....Price \$.....
- No. 1322 trunk for No. 872 Xylophone.....Price \$.....

For prices see price list enclosed.



Deagan Artists' Special Xylophone



Here is the "last word" in instruments of this class. There is nothing more that can be added. There is nothing to subtract. The instrument is perfect.

The Deagan Artists' Special Xylophone embodies every conceivable improvement and refinement. These instruments are not as large as the Deagan De Luxe Xylophone, nevertheless they are just as fine and are possessed of many useful features not to be had in any other Xylophone.

The bars of this model are of different proportions to the bars used in other types of Xylophone and are mounted by the cord and supporting post method, which permits the greatest degree of vibration, thus making the bars much more sensitive to the mallet than is possible with any other style of mounting.

The bars are of the very finest select seven-year seasoned Nagaed wood, 2 inches or more in width by $\frac{1}{8}$ inch thick.

The resonators with which the Deagan Artists' Special Xylophones are equipped are of the latest patent Deagan tunable type. They can be tuned by anyone without previous experience, entirely overcoming the effect of climatic conditions upon the instrument.

The frames on which the bars and resonators are mounted are of the finest quarter-sawed oak and the floor rack on which the instrument is mounted is the Deagan Standard type, which, when erected, is perfectly rigid. The entire instrument can be set up or taken down in but a minute's time, the bars being permanently mounted on the frames the same as with the Marimba Xylophone.

The lightest touch of the mallet brings out a full resonate tone of the clearest quality.

All metal parts are highly polished and triple nickel-plated. All wood parts are hand polished. Absolutely the finest Xylophone possible to build.

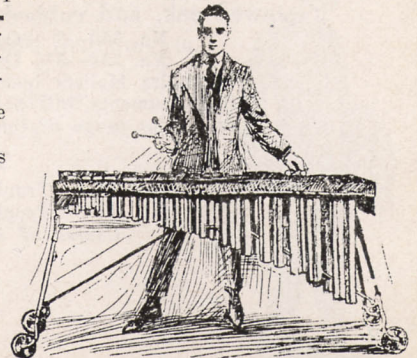
- No. 262— $3\frac{1}{2}$ Octaves, F33 to C76 Chromatic, 44 Bars \$.....
 No. 264—4 Octaves, C28 to C76 Chromatic, 49 Bars
 No. 266— $4\frac{1}{2}$ Octaves, F21 to C76 Chromatic, 56 Bars

Six pairs Assorted Mallets included with each of the above Xylophones.

All instruments will be tuned to Low Pitch A—440 unless otherwise specified.

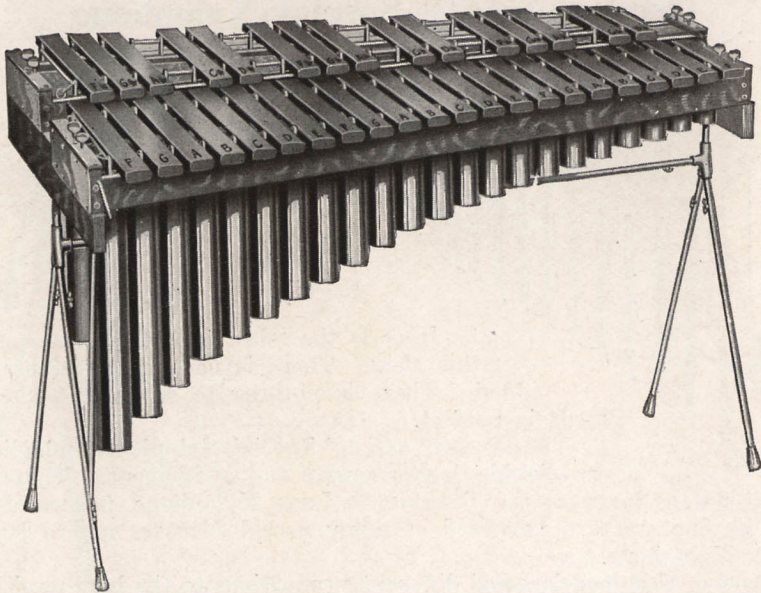
Course of instructions for playing free to each purchaser.

For prices see price list enclosed.





Deagan Marimba



The Marimba Xylophone developed and perfected by J. C. Deagan is classed as the Song Bells of the Xylophone Family.

Here is an instrument that will "make" a dance orchestra. Easy to master by anyone who can play orchestra bells or read a piano keyboard, the Deagan Marimba will keep your jobbing order book "full up" all the time.

"Marimba Waltzes," when played for dancing, create an instant sensation. The lower tones of the instrument are ideal for that "dreamy first strain" effect so often encountered in waltzes, while the upper register is perfectly suited for the brighter movement usually found in the second strain.

This instrument is being extensively used by stage artists, cabaret musicians, drummers, etc., and in all classes of musical work throughout the country. It is suitable for playing any sort of music, the lower register possessing a wonderful quality of tone of a subdued, mellow color, but having exceptional carrying power.

The Deagan Marimba is made up of select Nagaed bars mounted on special wear-resisting cord suspended by nicked posts between the bars. Adjustable resonators of Deagan patent construction, permitting of easy tuning to meet extreme climatic conditions, are a part of the equipment. Frames are of quarter-sawed oak, and rubbed and are mounted on the famous Deagan floor rack.

No. 350—3 Octaves, F21 to F57 Chromatic, 37 Bars..... \$.....

No. 352—3½ Octaves, F21 to C64 Chromatic, 44 Bars.....

Four pairs Mallets included with each of the above instruments.

All instruments will be tuned to Low Pitch A—440 unless otherwise specified.

For key to range of tones of instruments, see page 52.

Trunks for Deagan Marimbas

No. 1356—Trunk for No. 350 Deagan Marimba..... \$.....

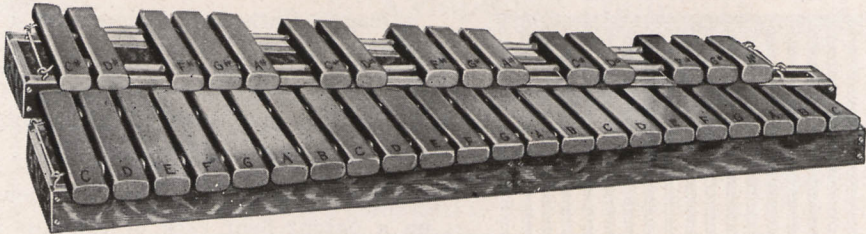
No. 1358—Trunk for No. 352 Deagan Marimba.....

Course of instructions for playing free to each purchaser.

For prices see price list enclosed.



Standard Nagaed Xylophone



The bars are of selected five-year seasoned Nagaed and are mounted on sounding board frames of white quarter-sawed oak with sound boards of spruce. Frames split in the center for packing, the top or small end telescoping into the bottom or lower end, thus greatly reducing the space necessary in which to pack the instrument.

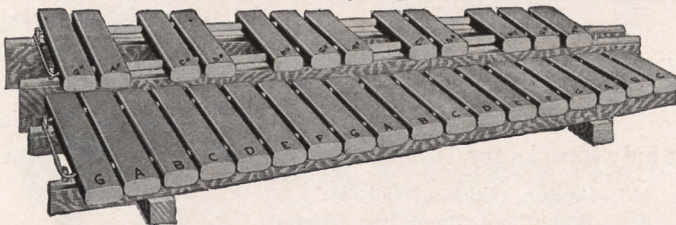
Material, workmanship and tuning are of the highest order.

- Bars $1\frac{1}{4} \times \frac{7}{8}$ inches
- No. 8022— $2\frac{1}{2}$ Octaves, F to C Chromatic, 32 Bars..... \$.
- No. 8033—3 Octaves, C to C Chromatic, 37 Bars.....

- Bars $1\frac{1}{2} \times \frac{7}{8}$ inches
- No. 8077—3 Octaves, C to C Chromatic, 37 Bars.....

Two pairs of assorted mallets included with each of the above instruments.

Junior Xylophone



Yes—it was made for the beginner. We made them smaller, but we made them good. There is nothing cheap in their construction. They are plenty good enough even “for professionals.” Made of Nagaed wood; mounted on collapsible frames.

- Bars $1\frac{1}{4} \times \frac{5}{8}$ inches
- No. 800— $2\frac{1}{2}$ Octaves, G to C Chromatic, 30 Bars..... \$.
- No. 801—3 Octaves, C to C Chromatic, 37 Bars.....

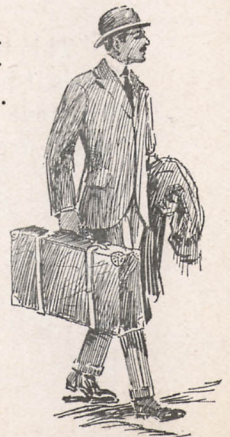
One pair of mallets included with each of the above instruments.
All instruments are tuned to low pitch A-440.

Course of instruction for playing free to each purchaser.

- No. 617—Carrying Case for No. 800 Xylo..... \$.
- No. 618—Carrying Case for No. 801 Xylo.....
- No. 1573—Floor Rack for No. 800 Xylo.....
- No. 1574—Floor Rack for No. 801 Xylo.....

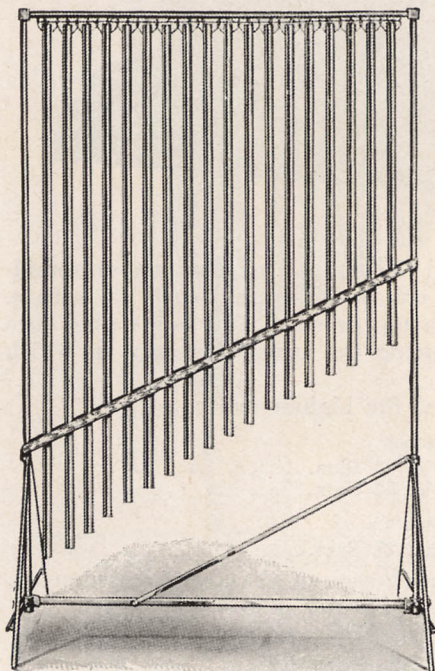
For shipping weights see Index, pages 87 and 88.

For prices see price list enclosed.





Deagan Cathedral Chimes



DEAGAN CATHEDRAL CHIMES

Rack, 60 inches high, 40 inches wide.

Deagan Cathedral Chimes are a perfect imitation of Church Chimes with the added advantage of flawless pitch and tuning and perfect uniformity in musical volume and intonation.

Deagan Cathedral Chimes are mounted on a patent floor rack of the slip joint type. The joints fit accurately so that when in use the rack is perfectly rigid. These racks can be taken apart and packed in a very small space, in a moment's time, without the use of tools.

Banner racks (without banners) are included with racks for 1¼-inch and 1½-inch Chimes. Racks for 1-inch Chimes are not so equipped because they are intended to be played from a sitting position, and generally for Orchestra use.

Free Course of Instruction with Each Deagan Instrument Low Pitch (A-440.)

Two Mallets are included with each set of the above listed Chimes.

We can supply Trunks for Deagan Cathedral Chimes. Prices on application.

- No. 425—Deagan Cathedral Chimes.....\$.....
- No. 426—Best Fibre Trunk for Chimes.....
- No. 430—1-inch Tubing, 1½ Octaves, 18 Chimes.....

Three Chimes for Chime Imitation

This three-note set is very popular for chime imitation. It consists of three tubes 1-inch in diameter and 3½ to 5 feet long, according to tones desired. The tone is full and of unusual richness and volume. They are mounted on a metal arm, which is made to fasten on wall or stage.

- No. 431—Set complete, with Metal Arm, Hanger and Mallet..\$.....
- No. 2026—Rawhide Cathedral Chime Mallets, each.....

Quotations for single notes on request.

For prices see price list enclosed.



No. 639



No. 638

Ludwig Special Fibre Bell and Xylophone Hammers

Made of medium hard fibre, weighted with brass washer to insure a full rich bell tone without the annoying click so audible in hard sticks. Ludwig fibre bell hammers have rattan handles that may be detached from the bells and replaced when necessary.

This stick costs just a little more than the ordinary type, but adds a great deal to the tone and efficiency of your bells, and they last a lifetime.

No. 639—Per pair \$.
 No. 638—Fibre balls only, per pair.....

Ludwig Full Tone Bell Hammers

Do you hear that "click" every time that drummer plays his bells?

Well, he has some of those hard hammers.

He probably has never heard of the Ludwig Full-tone Bell Hammers, which bring out the full tone of the bells and yet have no audible hammer stroke sound.

They are purposely made medium hard by our own process and are specially weighted to bring out a full tone.

No. 660—Small size, per pair \$.
 No. 661—Large size, per pair
 No. 662—Brass, large, per pair
 No. 637—Brass, small, per pair.....



No. 637



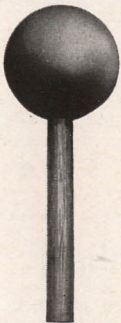
No. 662



No. 663



No. 664



No. 661



No. 660

Ludwig Xylophone Hammers

Made of hard vulcanized rubber, highly polished; produce a very brilliant tone. Best flexible rattan handles.

No. 663—Small size, per pair \$.
 No. 664—Large size, per pair
 No. 665—Practice mallets, small size, per pair
 No. 666—Practice mallets, large size, per pair.....

Deagan Special Xylophone Hammers

No. 2014—Hard Wound Xylophone and Marimba Solo Mallets, pr. \$.
 No. 2016—Soft Wound Xylophone and Marimba Solo Mallets, pr.
 No. 2018—Hard Wound Marimba Accompaniment Mallets, per pr.
 No. 2020—Soft Wound Marimba Accompaniment Mallets, per pr.
 No. 2021—Soft Wound Marimba Bass Mallets, per pr.
 No. 2022—Extra Large Soft Wound Marimba Mallets, per pr....

For prices see price list enclosed.





Genuine K. Zildjian & Cie Turkish Cymbals



It is well known among the profession that the famous K. Zildjian & Cie cymbal is in a class by itself as regards to quality, but it is not generally known that this is the only cymbal manufactured in Turkey. All other makes therefore, although called Turkish, are not of genuine Turkish make.

This famous cymbal has a most wonderful and brilliant tone. It is vastly superior to any other make for strength and durability as well as tone and carrying qualities. Every professional drummer or every professional organization should use Zildjian cymbals. They are considered by many as an investment because they have a standard market value. They do not deteriorate or depreciate in value by use. Priced per pair.

- No. 447½—10½-inch, each..... \$.....
- No. 448 —11 -inch, each.....
- No. 448½—11½-inch, each.....
- No. 449 —12 -inch, each.....
- No. 449½—12½-inch, each.....
- No. 450 —13 -inch, each.....
- No. 450½—13½-inch, each.....
- No. 451 —14 -inch, each.....
- No. 451½—14½-inch, each.....
- No. 452 —15 -inch, each.....

- No. 452½—15½-inch, each..... \$.....
- No. 453 —16 -inch, each.....
- No. 453½—16½-inch, each.....
- No. 441 —17 -inch, each.....
- No. 441½—17½-inch, each.....
- No. 445 —18 -inch, each.....
- No. 445½—18½-inch, each.....
- No. 446 —19 -inch, each.....
- No. 446½—19½-inch, each.....

American Brass Cymbals

American Brass Cymbals are made in our own factory and represent the best that can be had for the money. They are practical for small band and pedal use.

- No. 432—11-inch, each..... \$.....
- No. 433—12-inch, each.....
- No. 434—13-inch, each.....
- No. 435—14-inch, each.....
- No. 436—15-inch, each.....

Nickel Silver Cymbals

The Nickel Silver Cymbals are made in our own factory. They are especially well suited for pedal use, on account of the remarkable brilliant tone. They are substantial and preserve their color, a satin silver finish, remarkably well.

- No. 440— 8-inch, each..... \$.....
- No. 443—13-inch, each.....
- No. 444—14-inch, each.....

For prices see price list enclosed.



Chinese Cymbals

In selecting Chinese Instruments it is well to look for quality. There are many grades. We import these instruments direct from China and needless to say the best we are able to obtain.



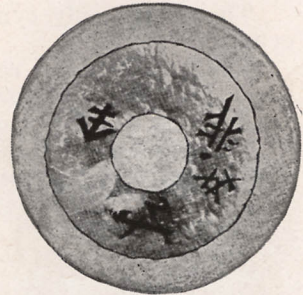
Extra thick hammered, strong metal—full tone, durable quality. Finest cymbal obtainable for crash effects.

- No. 459—13-inch, each..... \$......
- No. 454—14-inch, each.....
- No. 460—15-inch, each.....
- No. 461—18-inch, each.....

Chinese Gongs

When it comes to the Oriental effect, here is what you want.

For Tom-tom and crash effects use Chinese Gongs. They are of the heaviest quality, have a fine tone, and great durability.

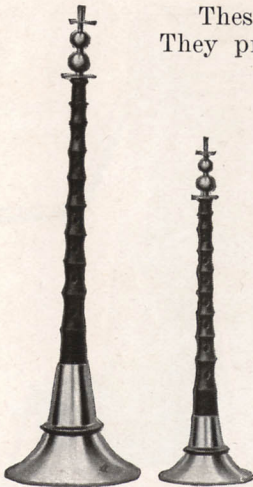


- No. 455—15-inch, each..... \$......
- No. 456—18-inch, each.....
- No. 457—21-inch, each.....
- No. 458—23-inch, each.....
- No. 478—27-inch, each.....
- No. 479—35-inch, each.....

Chinese Musettes

These Musettes are very effective for Jazz or Oriental effects. They produce a very loud piercing tone. We supply only the finest reeds, all are imported direct by us. The largest musette measures 18 inches, and the small one 13 inches.

- No. 507—Small size, each..... \$......
- No. 508—Large size, each.....
- No. 509—Musette reeds, each.....



Chinese Tom-toms

Remember, when ordering that there are several grades of these Tom-toms. We supply only the best.

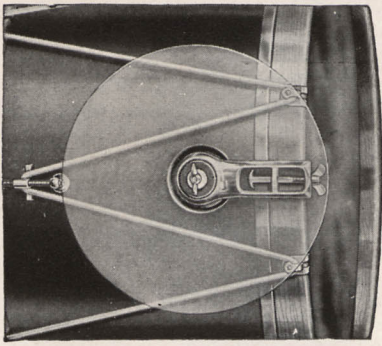
- No. 465 \$......

For prices see price list enclosed.





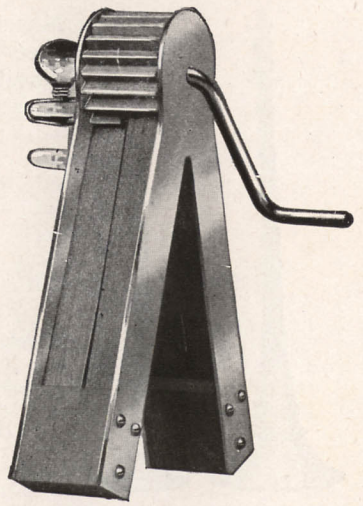
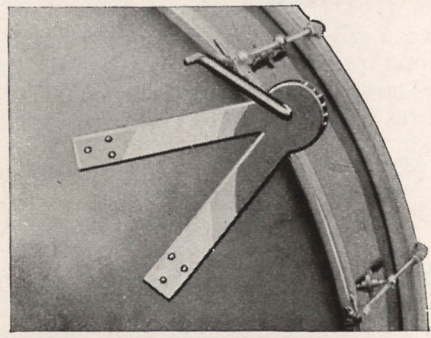
Ludwig Universal Cymbal Holder



This is the only cymbal clamp made which preserves all the tone of the cymbal.
 The large felt pad resting on the shell gives the cymbal the desired cushion effect, yet holds it firm enough to prevent it from wobbling.
 For bass drum and cymbal work this holder cannot be improved upon.
 This holder can also be used for crash cymbal, Turkish or Chinese.
 It is made of aluminum, very light—just the thing when on parade.
 Will not mar the hoop, and is quickly detachable.

No. 474 \$.....

Double Rattle with Crank



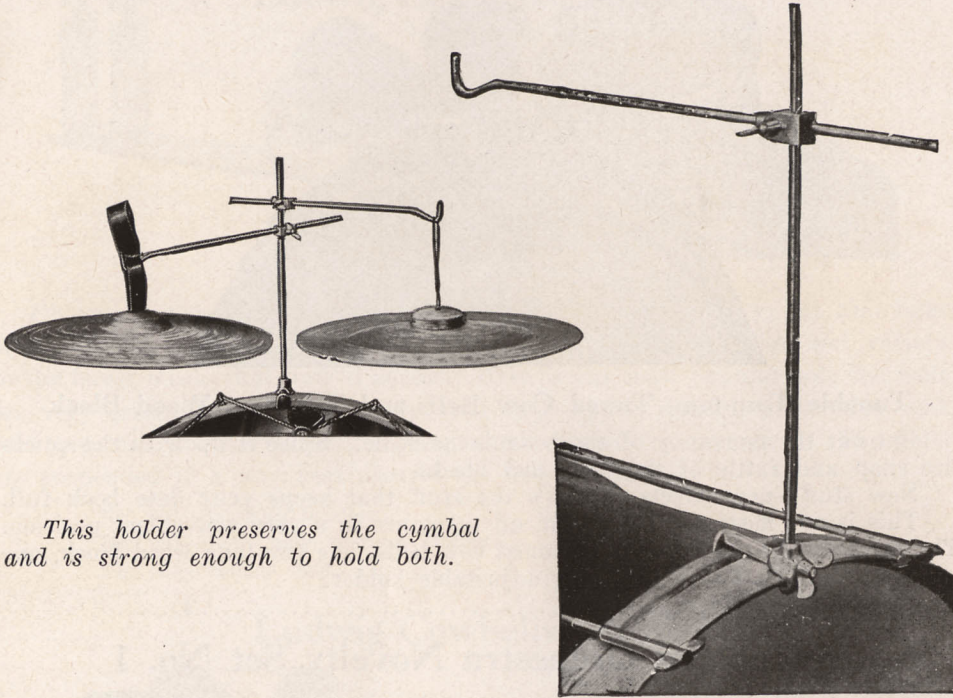
For vaudeville, burlesque or picture house work, this trap is one you must have. It is made of pressed steel and rock maple with four wooden tongues working independently and striking at different intervals.

No. 475 \$.....

For prices see price list enclosed.



Ludwig Simplicity Crash Cymbal Holder



This holder preserves the cymbal and is strong enough to hold both.

Give your cymbal a chance to do its best. There is only one right way to use a crash cymbal—suspend it. By allowing it to swing freely the life of the cymbal is also increased, the danger of cracking being reduced to a minimum. The clamp is rigid and does not mar the hoop.

Will hold any size cymbals, from 10 to 21 inches. Folds compactly for packing. Especially built for lightness and strength; in two styles, for crash or for combination Turkish and Chinese.

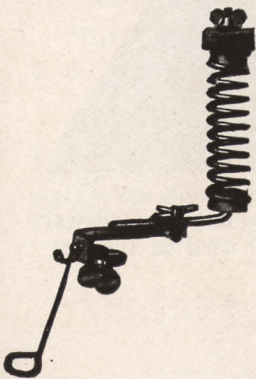
- No. 476—Crash Cymbal Holder..... \$.....
- No. 477—Combination Double Holder.....
- No. 498—Extra Arm and Block.....

Spring Crash Cymbal Holder

This holder is adjustable to any angle and length, brings your cymbal back into position.

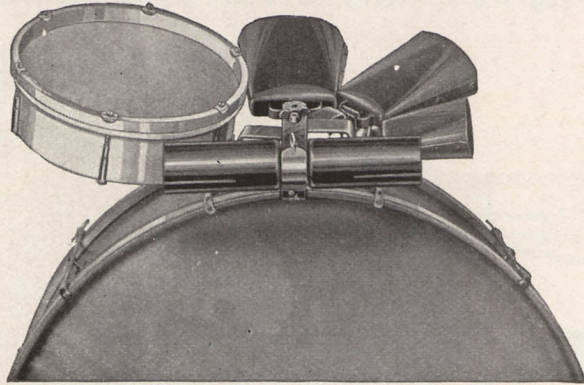
- No. 496—Complete with Triangle Holder.. \$.....
- No. 497—Without Triangle Holder.....

For prices see price list enclosed.





Syncopated Orchestra Novelties Set No. 2



Tunable Tom-tom, Tuned Cow Bells and Two-tone Wood Block

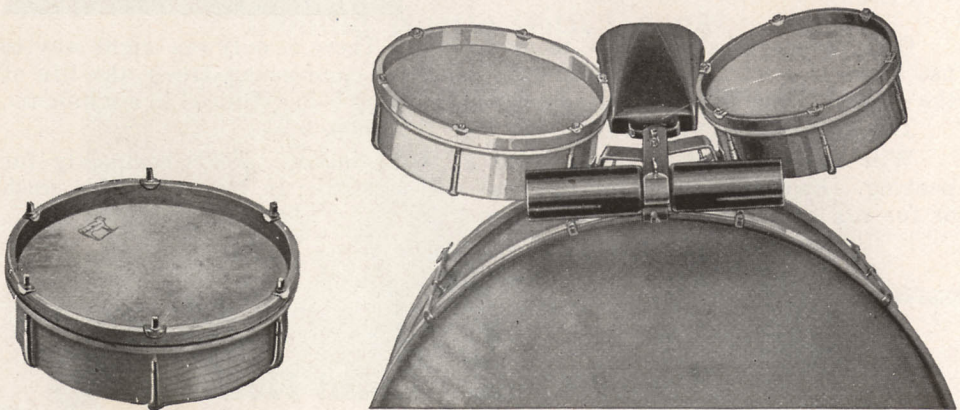
Cut out the monotony of the boom-boom-boom. Spice it up with the quick-fire snap and rattle of the bells and blocks.

New stuff—new effects. That's the stuff that keeps your date book full.

This is our most popular outfit, all traps are in a very convenient position. The complete set includes three tuned cow bells, one two-tone wood block, one tunable Tom-tom and the folding adjustable holder.

No. 952—Complete \$.....

Syncopated Orchestra Novelty Set No. 1



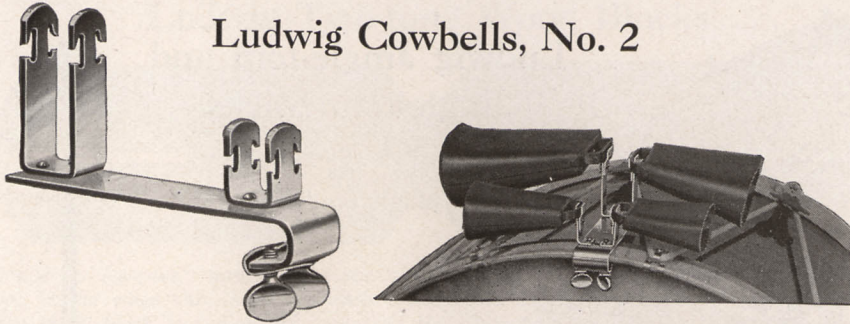
From the above sets any combination may be selected and made up. The set No. 1, consists of two tunable Tom-toms, which is desirable for Oriental effects in descriptive music and dances. Only one cow bell is used in this set, the two-tone wood block is the same as in set No. 2.

No. 951—Complete set..... \$.....
 No. 956—Tom-tom only (small size).....
 No. 970—Tom-tom only (large size).....
 No. 953—No. 3 Cowbell only.....

For prices see price list enclosed.



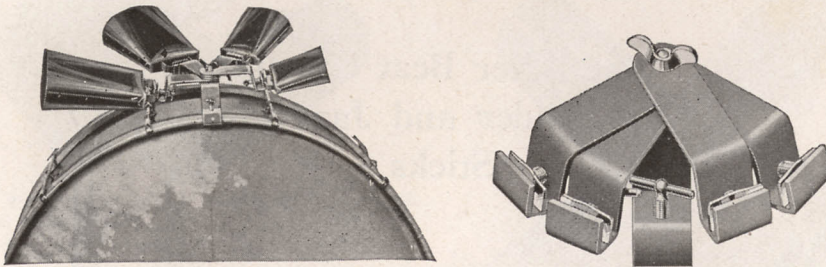
Ludwig Cowbells, No. 2



Oh yes, you do need them. Not the old style boiler factory, but that light alternating tone of tuned cowbells certainly does add the color and variety to the latest music that puts it across. Here is our most popular set; the bells are very convenient for use, occupy but little space, quickly detachable, and fold into one another making a very small parcel for transport. The bells are suspended in a way that assures the full bell tone.

- No. 566—Set with Holder.....\$.....
- No. 567—Bells only, without Holder.....
- No. 558—Holder only.....

Ludwig Cowbells, No. 1



The holder in this set is the feature. It is adjustable to any position and folds. The bells are the same as in set No. 2.

Single Cow Bells (Tuned)

- No. 568—Complete with holder.....\$.....
- No. 567—Bells only, without Holder.....
- No. 958—Cow Bell Holder only.....
- No. 966—Additional sections to hold extra Bells or Tom-toms.....
- B21—7 1/2" high, "C" natural \$.....
- B23—6 1/2" high, "E" natural
- B24—4 3/4" high, "G" natural
- B25—3 1/2" high, "C" natural

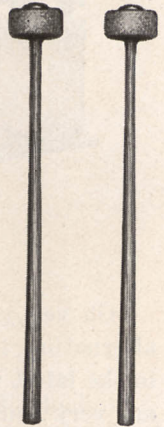
For prices see price list enclosed.




Reliable Service
 Ludwig & Ludwig



**Ludwig Jingle-tom and
Jingle-tom Sticks**

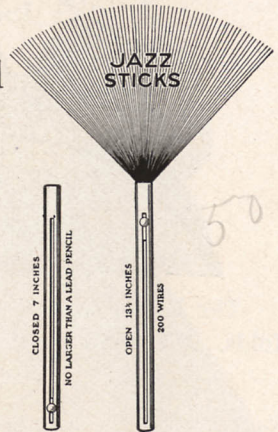


The very latest novelty trap new effects are appreciated. The Jingle-tom is played with special hard felt sticks and with snare drum muffled. The Tom-tom is the same as our No. 956 illustrated on page 66, except that Tambourine Jingles are added. The Tom-tom is tuned a third or fifth lower than the snare drum muffled and played lightly near the rim, alternating with the Snare Drum, Bass Drum or Cow Bells. Do it different than the other fellow—that's the idea.

- No. 999—Jingle-tom with holder.....\$.....
- No. 518—Jingle-tom Sticks, Pair.....



**The After Beat Cymbal
Holder and Jazz
Sticks**



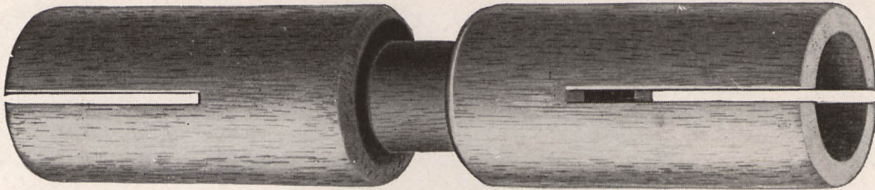
Here is another new one; it is used very much the same as the Jingle-tom, except that the Jazz Sticks are made of fine wire that produces an effect impossible any other way. You alternate from snare drum with snares or to cymbal and produce a variety of effects either by light taps or swishing effect. The cymbal is made of nickel silver, 8 inches in diameter. The sticks are made of metal handle with wire brush that folds into the handle.

- No. 440—8-inch nickel silver cymbal only.....\$.....
- No. 322—Cymbal holder
- No. 988—Cymbal and holder complete.....
- No. 605—Jazz sticks, per pair.....

For prices see price list enclosed.



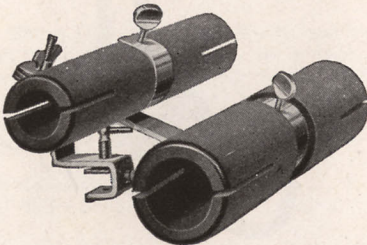
Ludwig Two-tone Wood Blocks



“Made in America” means we make them better. Why pay big prices for imported Chinese blocks when this American-made wood block is better for the latest music? The Ludwig wood block is completely replacing the Chinese block because it is much superior. You pay no import duty and get a better block. Ludwig blocks are resonant, the tone is definite and a great variety of effects is possible. The Ludwig block No. 955 is made in two sizes. The larger single block is the most popular. It has two tones and is equal or better than two Chinese wood blocks.

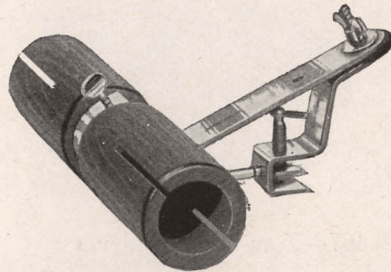
The small block is used only in connection with the large block and is attached to the holder of large block. It, as well as the larger block, has two tones, making four tones on two blocks.

Four-tone Tuned Wood Blocks and Holder

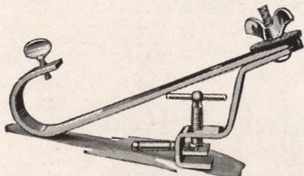


Two two-tone wood blocks, four different tones, with holder.
 No. 965 \$.....

Two-tone Tuned Wood Block with Holder



No. 955—Large block with holder... \$.....
 No. 957—Large block only.....
 No. 959—Small block only.....
 No. 968—Short arm for holding small block.....



The proper holding device is as important as the block itself.

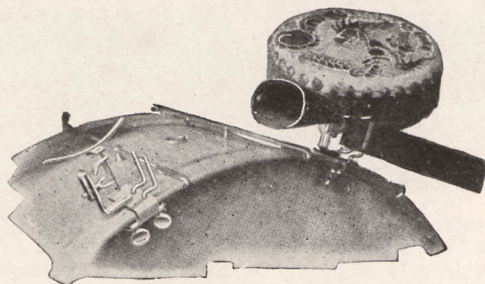
Here's what you want. Sections to hold cowbells or tom-tom may be added.
 No. 964—Wood Block Holder..... \$.....
 No. 967—Clamp Bracket only, without arm.....

For prices see price list enclosed.





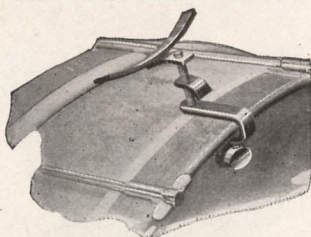
Wood Block, Cowbell and Tom-tom Holder



This holder holds one Chinese tom-tom, one cowbell and Chinese wood block in position where they can be used rapidly. It is a very compact holder and will eliminate all worries as to means of holding these traps conveniently. No other on the market to compare with it.

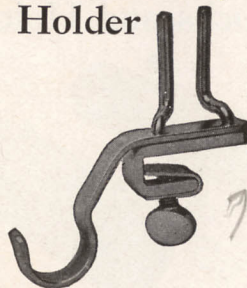
No. 471—Price \$.....

Tom-tom Holder



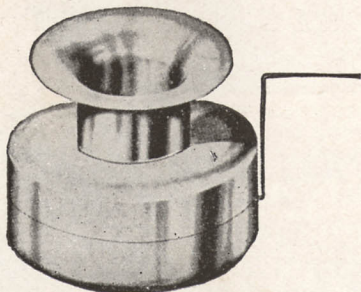
No. 467—Tom-tom Holder,
only \$ *75*.....

Wood Block and Squawker Holder



Holds squawker, also Chinese block, in a convenient and handy position, where they are easy to operate.

No. 472—Each \$.....
No. 468—Holder for wood
block only..... \$.....



Carnival Rooter

A very effective and inexpensive trap that is good for comedy or vaudeville work.

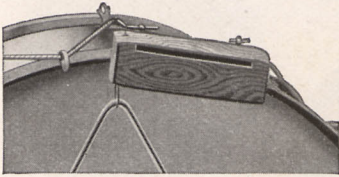
It imitates cracking of timbers, rasping of steel, or almost any other crushing sound.

No. 473—Each \$.....

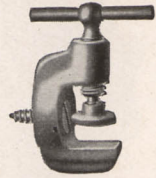
For prices see price list enclosed.

Dependable Quality
Ludwig & Ludwig

Wood Block and Triangle Holders



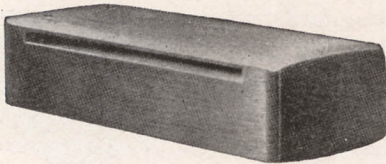
The Ludwig Wood Block and Triangle Holder clamps onto the hoop of your bass drum, where it is handy for you. This holder permits mounting of smaller block in back of the large one.



It consists of two non-marring clamps which are made to fasten to any size wood block with two small screws. This clamp adds brilliancy to the block and greatly increases the tone. The triangle can be suspended from the wood block. Thus the clamp serves a double purpose.

No. 470—Price, per pair..... \$.....

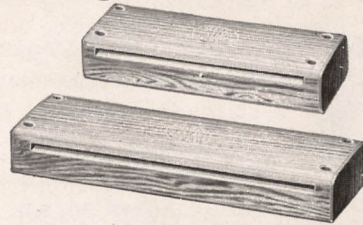
Chinese Wood Blocks



These Chinese Wood Blocks are the very best that we can import or obtain in the American market. Owing to the nature of this particular Chinese wood we will not guarantee these blocks against checking or cracking in use.

No. 462—Small size \$.....
No. 464—Large size \$.....

Ludwig Piccolo Blocks



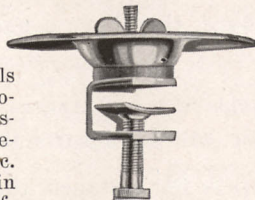
This block ought to be called the "Much in little," by reason of its tremendous tone as compared to its bulk.

It is made of the celebrated Nagaed wood in two sizes—is small—but for tone!

"It is there."

No. 1400—Piccolo Wood Block. Size, 4½x1½x1⅛ inches..... \$.....
No. 1422—Standard Wood Block. Size 6x2x1⅛ inches..... \$.....

Greeko Cymbals



(Trade Mark)

The Greeko Cymbals are used by Syncopated Melody Orchestras in fancy and descriptive dance music. They are used in pairs, each of a different pitch. They are fastened on the counter hoop of the bass drum with a Ludwig Special Clamp and played with the top of the drum stick.

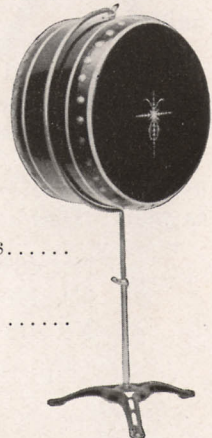
No. 986—Price per pair with Ludwig Holder..... \$.....
No. 987—Holder only, each..... \$.....

Ludwig Oriental Tom-tom

The Oriental Tom-tom is very effective for novelty dances or descriptive dance music.

No. 984—Price complete with stand..... \$.....

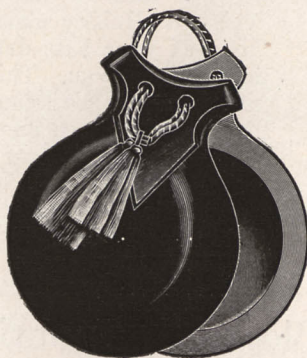
No. 985—Stand only..... \$.....



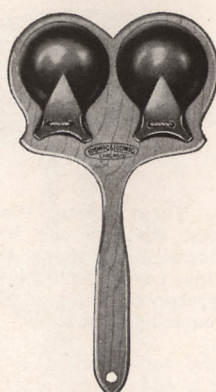
For prices see price list enclosed.



Spanish Castanets



Castanets are regarded as a standard trap that every drummer is expected to have. They may be called for any time. The general public is quite familiar with the tone that Spanish Castanets should have, you can hardly afford to use Castanets that cause a guilty feeling every time you use them. The market is flooded with cheap painted or stained wood clappers that have a resemblance to Castanets but not the tone. Good ones cost so very little more that it should not be considered at all. The Ludwig Castanets have the shape, weight and tone



of the Genuine Spanish make and in addition are stronger and will not chip or crack as readily as ebony or any other kind of wood. The Ludwig Castanets are made of a composition rubber baked hard, they have a natural black glossy finish.

Ludwig hand Castanets are used extensively by dancers. For drummers' use they are mounted on hard rock maple handle, natural finish.

It won't pay you to use ordinary clappers for castanets that crack and have no tone. Why not get a real Spanish Castanet that sounds correct and lasts as well? That's economy and efficiency.

- No. 488—Hand Castanets with cord (as illustrated)..\$1.50
- No. 480—1 pair on one handle..... 2.25
- No. 481—2 pairs on one handle 3.60

For prices see price list enclosed.



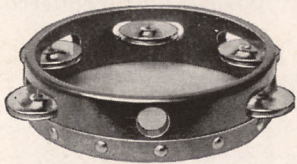
Ludwig Tambourines



A high grade tambourine is a necessity to every drummer's equipment. The Ludwig Tambourine is one that we are proud of. You can depend upon it for quality of tone, workmanship and material. The shell is made of solid rock maple or walnut, compact, light and strong. The jingles are of our own manufacture, not too heavy to speak easy and not too light for volume. The head is the best quality calf and finished waterproof. Dampness does not affect this head. The rim is highly polished and in all it is a finished instrument.

- No. 482—Size, 10 inches, with 9 jingles \$.....
- No. 483—Size, 11½ inches, with 14 jingles \$.....
- No. 484—Size, 10 inches, with double row of jingles..... \$.....

The Ludwig Tango Tambo

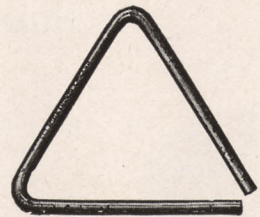


A tambourine made the same as the above, best material throughout, but condensed into 6 inches. This is a small tambourine with a big tone and quite a favorite with the jobbing drummers. Try this instrument. The result will surprise you.

- No. 481—Size, 6 inches, with 5 sets of jingles \$.....

Triangles

Some drummers fail to realize the true value of a good triangle. They select one because it has a good appearance and some kind of tone. The discriminating, however, know that a triangle must have a tone all its own, no definite pitch, yet clear and easy speaking. The Ludwig Triangle is the result of much experimenting with different metals in order to attain the proper results. It has tone and speaks easily.



- No. 485—10 inches, ½-inch diameter..... \$.....
- No. 486— 8 inches, ½-inch diameter..... \$.....
- No. 487— 6 inches, ⅞-inch diameter..... \$.....

For prices see price list enclosed.

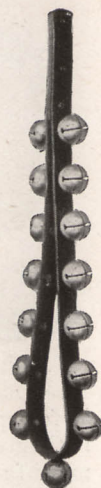
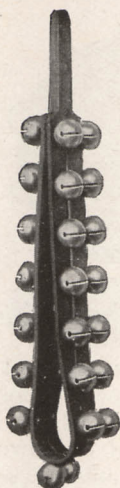




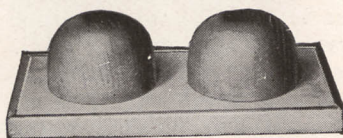
Sleigh Bells

These bells are superior in quality to the usual kind and much more convenient to handle than the body straps. They are made of finest bell metal heavily nickel-plated and polished. Mounted on flexible braided strap.

- No. 490—Strap with 15 bells, 30 inches long \$.....
- No. 491—Strap with 30 bells, 30 inches long \$.....



Horse Trot Imitator



This slab gives the best possible pavement effect, and is just large enough to play on comfortably and small enough to pack to advantage.

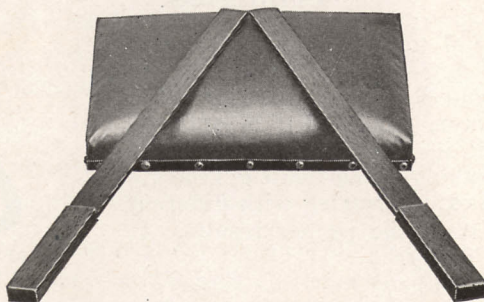
It is an especially constructed slab, made of marble chips and concrete; very strong and durable. Size of slab, 10½x5½.

The hoofs are turned of hard rock maple, carefully finished and lacquered. Can also be used as cocoanuts in dances.

The Ludwig Horse Trot Imitator is very effective and realistic.

- No. 492—Price, set complete \$.....
- No. 493—Price, slabs only \$.....
- No. 494—Price, hoofs only \$.....

Shot Cushion



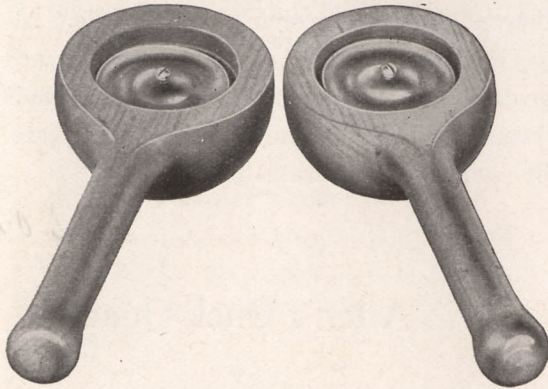
Leather Shot Cushion, solid oak base, accurate imitation of rifle shots. Very substantially made. Filled to its fullest capacity with good quality of packing. Can also be used to imitate galloping horses on turf or soft road by using handle end of slappers or drum sticks.

- No. 495—Price, complete, with slappers \$.....

For prices see price list enclosed.



Clog Mallets



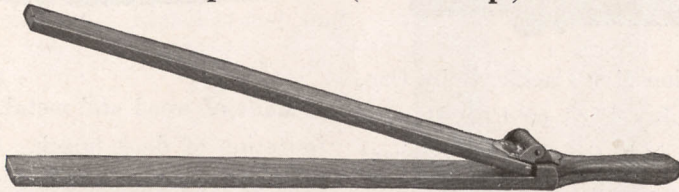
This is a new and original Ludwig design. The handle can't come off and there are no nails to split the heads.

By reason of their shape they always fall into an upright position, no matter how you put them down.

They are of one piece rock maple, are very durable and well finished.

You do need Clog Mallets; it can't be done on the hoop. A clog dance must sound real.
 No. 546—Price, per pair \$.....

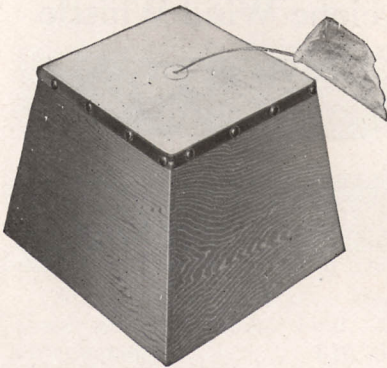
Slap Stick (or Whip)



Slap Stick, made of hard rock maple. Tongs, 14½ inches long and 2 inches wide. Spring hinge. A loud and perfect imitation. Very durable. Operates with one hand, leaving the other hand free for sleigh bells or other traps.

No. 545—Price, each \$.....

Ludwig Lion and Bear Imitator



This effective trap has become very popular for all jungle scenes in moving pictures or descriptive work. Very powerful and durable. Always ready for use. Convenient to handle and pack. Box, 8x10 inches. Best calf head, gut cord and rosin pad.

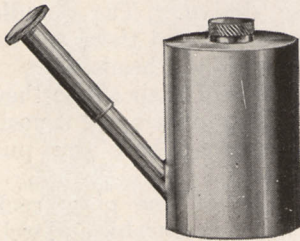
No. 541—Price ...\$.....

For prices see price list enclosed.





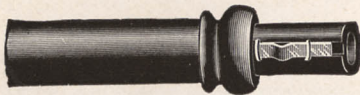
Ludwig Bird Whistle



Convenient water carrying bird whistle. Always ready for instant use. Can be dropped into drum bag without fear of leaking. Made of brass, nickel-plated and polished. Very carefully voiced for accurate imitation.

No. 511 \$ ^{2.00}.....

All-in-One Trap and Duck Call



Combination Hen Cackle, Baby Cry, Duck Call, Jay Bird or Cow Bawl—all excellent imitations. The different effects can be obtained by simply shifting a small slide with your thumb or first finger. Once use this and you will never be without it again. Made of hard rubber; 4¾ inches long.

No. 506—Each \$.....

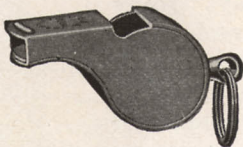
Allen's Duck Quack



Made of wood and metal. A perfect imitation of duck quack. Can also be used as Hen Cackle, Rooster Crow, Pig Grunt and many other imitations. Every drummer needs one. Finely made and will last a lifetime.

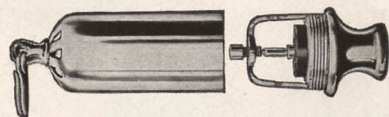
No. 505—Each..... \$.....

Drum Major's Whistle



No. 524—Price, each.....\$.....

Cyclone Wind Whistle



An imported whistle that responds to the slightest breath. No drummer can afford to be without a reliable wind whistle.

No. 513 \$.....

For prices see price list enclosed.



Ludwig Imitations

Ludwig reed traps speak for themselves. You don't have to announce that it was a rooster you had just imitated. You will be proud to use this imitation at every opportunity available. Ludwig reed traps are a real pleasure to use. Don't allow worthless traps to burden you. When it comes to imitations only the best are good enough.

Rooster Crow

Perfect rooster effect—loud and lusty. Made of nickel-plated brass tubing. Durable metal reed.

No. 501.....\$.....

Hen Cackle

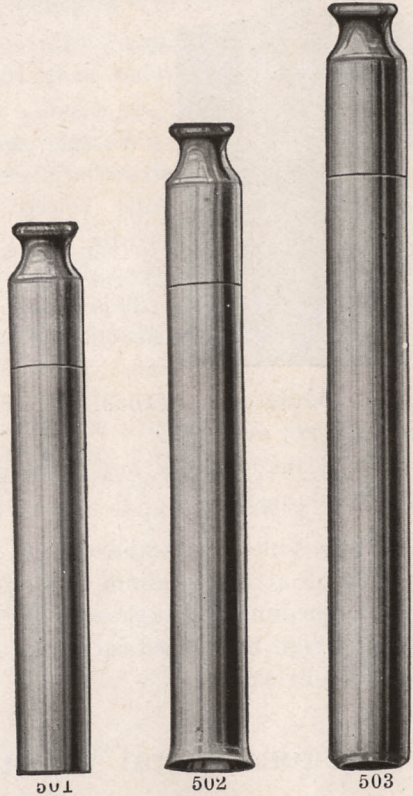
Most realistic hen effect made. Strong brass reed. Nickel-plated and polished.

No. 502.....\$.....

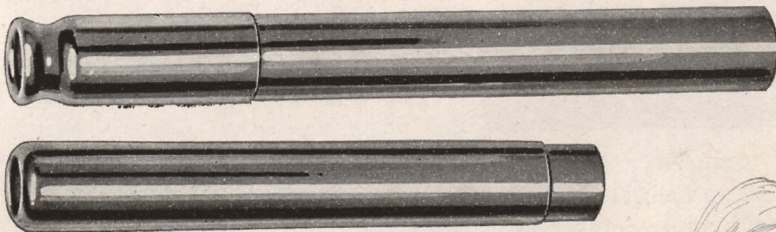
Baby Cry

Perfect imitation. Made of brass tubing, nickel-plated and polished. Practical and durable.

No. 503.....\$.....



Cow Bawl



Strong, life-like tone. Made of nickel-plated brass tubing, 18 inches long. Detaches to 9 inches for packing.

No. 500.....\$.....

For prices see price list enclosed.





Ludwig "Four-in-One" Whistle



A good wood whistle takes an artist to make it. Knowing what the work requires, we have spent a lot of time and money in perfecting what looks like a simple wooden affair.

It is not.

We take special pride in the careful construction of our wood whistle. They are skillfully voiced and respond to the slightest breath. They will sustain a rich, full tone when blown hard for railroad effects.

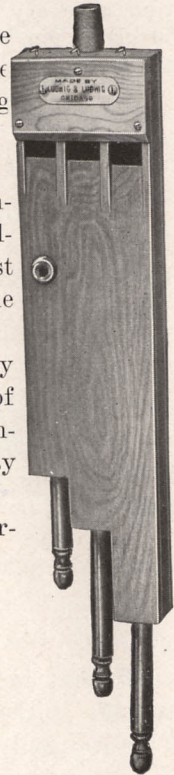
This whistle gives the drummer four highly efficient and perfect imitations at the cost of one. Economizes in space and extra handling.

Made of hardwood, voiced by experts to blow very easy and will not overblow.

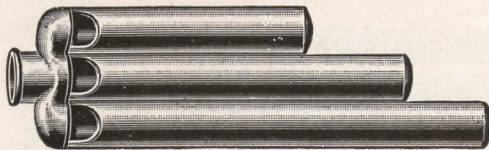
By means of slides, any desired effect can be rapidly and perfectly obtained.

- A—Three tones for steamboat.
- B—The deep and medium tones for tugboat.
- C—The medium and high notes for railroad whistle.
- D—The high tones used for cuckoo.

No. 525—Price\$.....



Three-tone Metal Whistle



Nickel-plated, compact. Excellent imitation of small steamboat, launch, interurban electrics and motorcycles. A very effective, useful, inexpensive and durable little trap.

No. 522—Price, each...\$.....

Ludwig Cuckoo



Single cuckoo, like illustration, made of same fine quality of hardwood. Skillfully voiced, perfect effect.

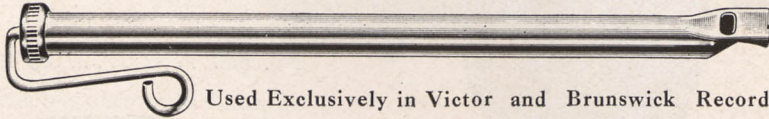
No. 526—Price, each...\$.....

For prices see price list enclosed.



The Ludwig Song Whistle

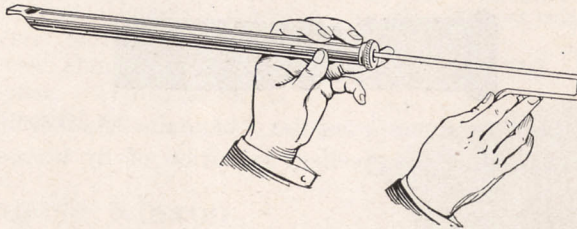
THE HIT OF THE SEASON



Used Exclusively in Victor and Brunswick Records

The newest and latest musical instrument on the market. It is a musical instrument—not a toy. It has $2\frac{3}{8}$ octave range playing anything from classic to jazz. The simplest principle of any instrument ever devised, therefore the easiest of them all to learn to play. Down is a low tone—up is a high tone. All keys are alike to this instrument, you learn it in any key and you've learned it in every key. One of the lowest priced musical instruments ever conceived, still it is built to last a lifetime, solid nickel plated brass that will stand most any kind of knocks and abuse. The only musical instrument that can be played to the phonograph without thought of key or pitch. As near the human voice as is possible to get a musical instrument.

As a standard instrument you have a characteristic tone, beautiful, rich, round, low tones and clear true high tones. Can be played very pianissimo, as well as fortissimo, enough to be heard over a fifty piece band. As a jazz instrument you have something that no other instrument in the world has, that is, a characteristic slide jazz with thrilling and triple tonguing.



Execution. Always use a tremello motion, the faster the better, keeping your wrist as loose as possible.

Do not over blow at extended positions nor under blow at upper positions, and you will find a range of over two octaves. Always use sufficient breath at all times to keep your tone clear. Breathe as you would when singing. Countless records have been made featuring this whistle, it will be popular in songs as long as whistling with the lips pleases the performer. All drummers should become proficient on this whistle. A little practice with a phonograph will do it. As a trap it has wonderful possibilities and well worth the price for that use alone outside of a solo instrument.

No. 973—Price.....\$.....

For prices see price list enclosed.

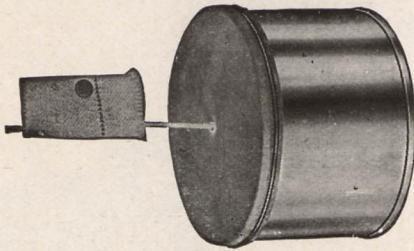




Ludwig Dog Bark

Body made of metal, with a four-inch drumskin head. Imitates the bark of a dog.

No. 550 \$.....



Ludwig Cat Meow

A simple trap, very effective for comedy. A perfect imitation of cat is inexpensive, and for the price, no drummer should be without one.

No. 504 \$.....



Nose Blow Imitation



A short, hard blast produces a regular "bandana handkerchief" nose blow effect. It will also produce an excellent imitation of fly buzz, bee hum, mosquito buzz, etc.

No. 556 \$.....

Snore Imitation



Very effective for comedy pictures and bound to get a laugh every time it is used.

No. 557 \$.....

For prices see price list enclosed.

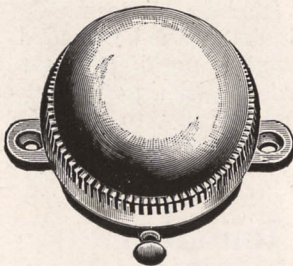


Samson Hand Horn



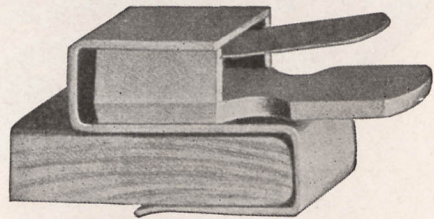
This popular auto horn gives a Klaxon effect—any desired volume may be attained. Sure to work, nothing to get out of order. No wiring or batteries to buy. Very reliable and especially well adapted to drummers' use.
 No. 805 \$.....

Telephone Bell



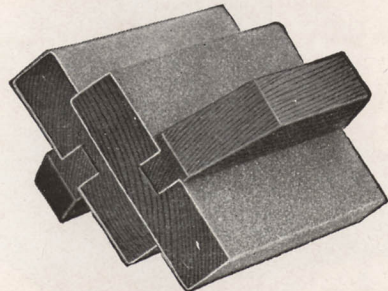
Perfect imitation of telephone bell, alarm clock, bicycle bell, burglar alarm, etc. Perfect "buzzer" when muffled. Electric movement, continuous ring, screw clamp. Takes up very little space. (Illustration is three-quarters actual size.)
 No. 554 \$.....

Telegraph or Typewriter



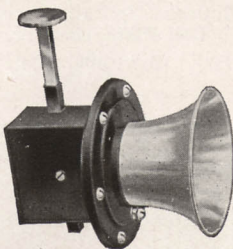
A very simple article that produces an exact imitation of the sound made by a typewriter or telegraph instrument.
 No. 552—With holder \$.....
 No. 553—Without holder \$.....

Sand Blocks



To imitate a clog dance, etc., you must have sand blocks. Any sand-paper can be used on these blocks.
 No. 752—Per pair \$.....

Motorcycle Klaxon



Press the plunger and hear the Klaxon. Finished in Black and Nickel.
 No. 807 \$.....

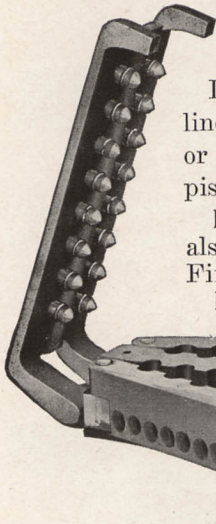
For prices see price list enclosed.





Reliable Service Ludwig & Ludwig

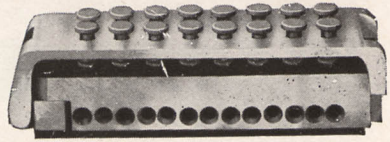
Ludwig "Sure Fire" Machine



Drummers on the firing line frequently get shot up or burnt in trying to imitate pistol shooting.

Pass 'em up and play safe. You can play in perfect tempo also, as easy as the drum or bells, if you use the Ludwig Sure Fire Machine.

It is a practical shooting device that eliminates all trouble. Absolutely safe and sure. Permits accurate and rapid firing.



Holds sixteen 32 calibre blanks; can be loaded in 30 seconds, nothing to get out of order. Lifting cover empties shells ready to reload.

Made of Aluminum.

- No. 532—Price \$.....
- No. 534—Blank Cartridges, per box.

The Ludwig Railroad Imitation

If you are dead tired of pounding sheet iron flat, try this.

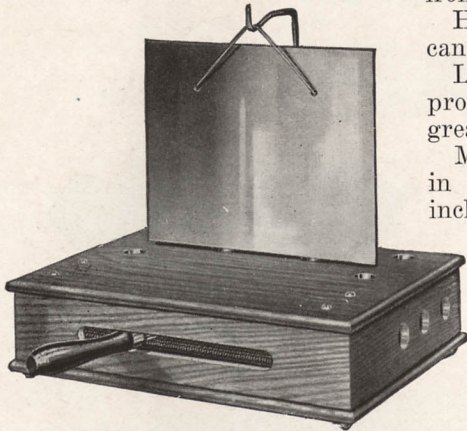
Here's a perfect railroad imitator that can easily be worked with one hand.

Locomotive starts, stops or distant approaches can be perfectly imitated with the greatest ease.

Made of fourteen steel springs, fastened in substantial hardwood box, 14x10x3 1/4 inches—nothing to get out of order.

- No. 528—Railroad Imitation only, each, \$.....

- No. 529—Railroad Imitation with Bell Plate, each.....



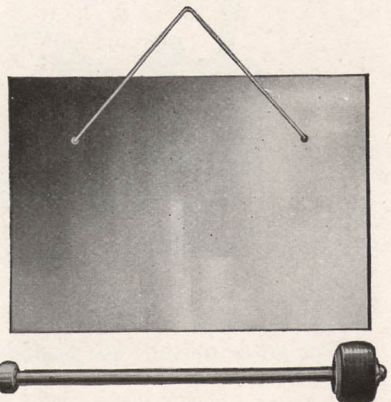
Railroad Bell Imitation

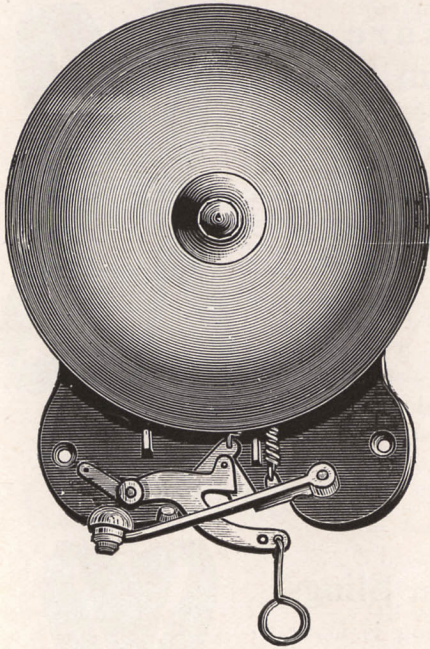
Made of bell steel. A perfect railroad bell imitation, and the plate can also be used for marble or wood slab effects.

Full, realistic tone. Durable, light and convenient shape for packing.

- No. 530—Nickel-plated and polished..... \$.....
- No. 531—Nickel-plated, not polished.....

Prices include mallets.





Fire Engine Gong

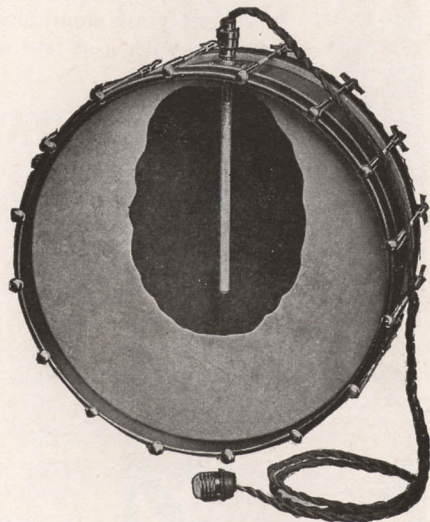
For imitation of fire engine, street car, ambulance, police patrol, etc. How many times could you have used this gong effectively if you only had one? Add one to your equipment and be prepared for all descriptive numbers. Can be operated by hand or pedal attachment. Note trip arranged so gong is struck on outer edge, giving you a clear, loud tone.

- No. 569—Diameter, 6" ..\$.
- No. 570—Diameter, 8"
- No. 571—Diameter, 10"

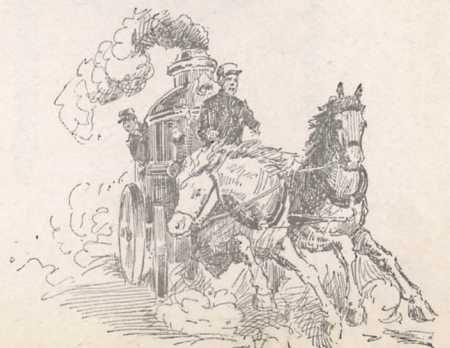
Electric Drum Heaters

Many times in a real damp theatre, or in an out-of-doors concert, you would have given a great deal for something that would hold up the tone of your drums. There are trying times in damp weather when it keeps you busy tensioning your drum. An electric heater eliminates all these worries. Here's an electric heater that gives no light, is very light and works like a charm. Is 9½ inches in length and ¾ inch in diameter. Six feet of cord and connecting plugs with each heater.

- No. 732—For Snare Drum \$.
- No. 733—For Bass Drum \$.



For prices see price list enclosed.





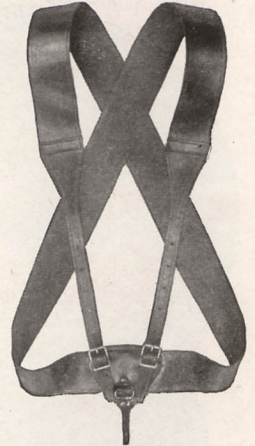
No. 717

Ludwig Snare and Bass Drum Slings

These Slings are made of fancy black leather 1½" wide, strong and durable with plated metal buckles and sewed re-enforcements.

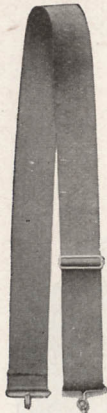
The Snare Drum Slings can be used with or without waist belt.

The Bass drum strap is of one piece.



No. 716

- No. 716—Bass drum sling \$.....
- No. 717—Snare drum sling complete \$.....
- No. 718—Snare drum sling without waist belt..... \$.....



No. 720

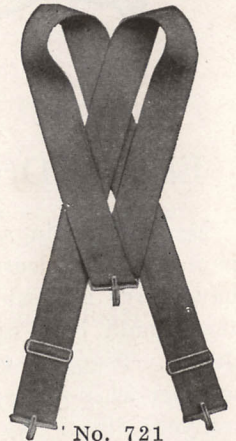
Snare and Bass Drum Slings

The Ludwig snare drum sling is made up of stout, broad khaki webbing that will not cut your shoulders, nickel-plated trimmings, with a swivel snap.

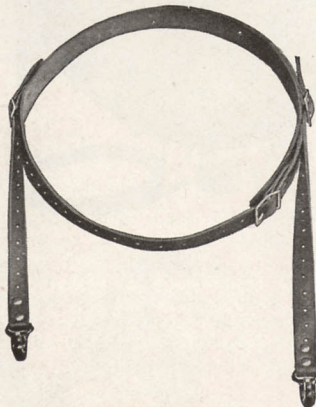
No. 720 \$.....

The Ludwig bass drum sling is made of khaki webbing and is made to cross on the back. The top hooks to the center of the drum. The two bottom hooks fasten to the two hoops of the drum, which prevents the drum from tilting.

No. 721 \$.....



No. 721



For the Ludwig All-metal Drum

A convenient body strap. Holds the drum firmly while marching. You have wished for a carrying strap of this kind many times. Here is a strong strap made of leather that will reduce your worries on that next march.

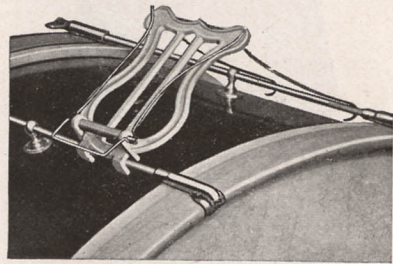
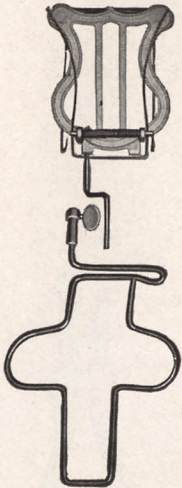
No. 740 \$.....

For prices see price list enclosed.



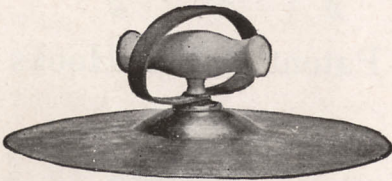
Music Holders

For the Modern Large Band using more than one snare drummer and for the modern marches with drum solos, etc., the music holder for street work is indispensable. The New Ludwig Music Holder is made of Aluminum to reduce the weight to a minimum which will be appreciated by the bass drummer especially. A special feature of this holder is that it can be used on the bass drum or by the snare drummer, thus doing a double duty. You buy only one holder and use the same holder for bass drum or snare drum. You really buy a bass drum music holder, and for snare drummer get a breast piece only, that then gives you an equipment to use on either bass drum or snare drum.



- No. 743—For bass drum only\$.....
- No. 742—For snare drum and bass drum.
- No. 742—For piccolo players

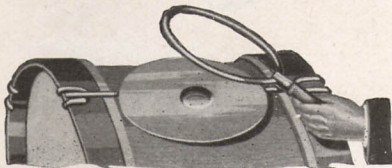
Hand Cymbal Holder



This handle holds cymbal firmly, but permits it to vibrate freely. You can adjust the strap to fit any hand.

- No. 750—Each\$.....

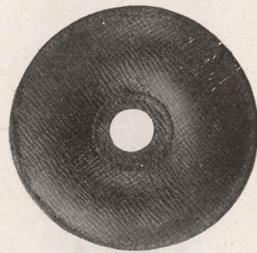
Cymbal Beater



No. 246

- No. 751—Cymbal Beater made of Steel Spring Wire.....\$.....

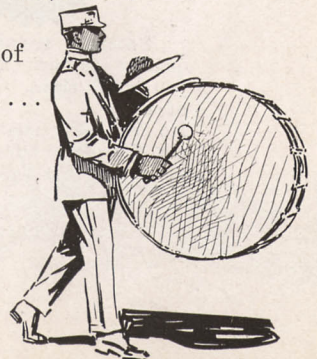
Cymbal Pad



A leather covered felt pad that protects the knuckles from friction with cymbals while playing. If you ever play cymbals you need two of these pads.

- No. 746—Each\$.....

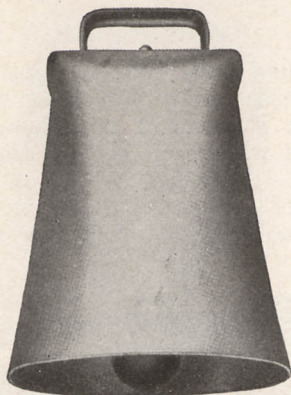
For prices see price list enclosed.





Single Cow Bells

Best Quality Not Tuned to Any Specific Pitch

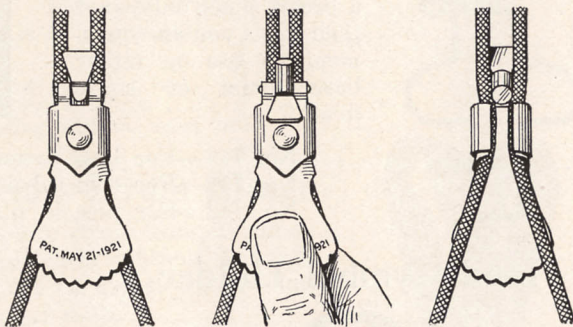


- No. 560—Style 0, 5 $\frac{3}{4}$ in. bell, 8 in. high \$.....
- No. 561—Style 1, 5 in. bell, 7 $\frac{1}{2}$ in. high
- No. 562—Style 2, 4 in. bell, 6 $\frac{3}{4}$ in. high
- No. 563—Style 3, 4 $\frac{1}{4}$ in. bell, 6 in. high
- No. 564—Style 4, 3 in. bell, 4 $\frac{3}{4}$ in. high
- No. 565—Style 5, 3 in. bell, 3 $\frac{1}{2}$ in. high

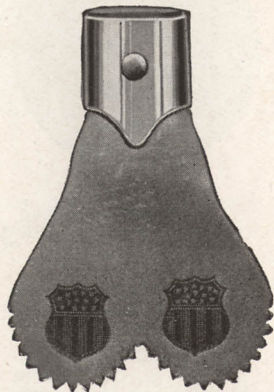
New Never Slip Drum Ears

A drum ear that locks where you put it—slipping is impossible.

No. 722—Each \$.....



Drum Ears



Patented metal bound drum ears, finest quality leather. Ears that will stick where you want them. No slipping, nor cutting of rope.

No. 708—For snare drums..... \$.....
 No. 709—For bass drums..... \$.....

Patent Roller Hooks



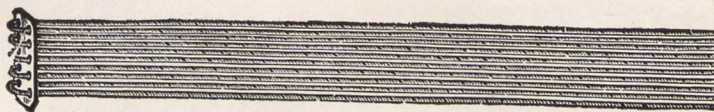
Patented roller drum hooks, steel, nickel-plated, with roller that works easy and absolutely will not cut drum cord.

No. 710—Each \$.....

For prices see price list enclosed.



Gut Drum Snares



We recommend gut snares for professional use on account of their versatility. All wire, silk wire or waterproof or any other snare on the market no matter by what name give good results only in a limited way, most commonly on small drums in small orchestra.

Gut require careful setting and adjustment, but this once accomplished, they give by far the best results. On small drums they are snappy, the equal of any wire snare and play as easy but the advantage is that it is possible to play an even crescendo smoothly and up to a great fortissimo with the same snare tone and without the snares leaving the head which all others do (especially wire) causing a dull tone.

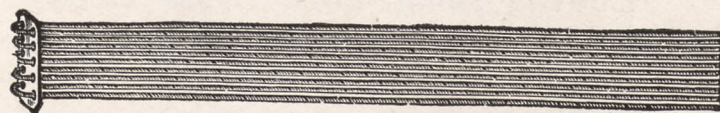
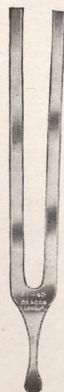
Gut snares may be used in orchestra, band or street work with very satisfactory results no matter what the size of the orchestra or band may be, providing of course, the snares are of a good quality and properly adjusted.

All Ludwig Gut snares are of the finest that it is possible to produce. Made in 3 sizes, light for orchestra, medium for band and heavy for street work.

To set gut snares moisten before putting on drum, then allow to dry before the final clamping in the snare strainer.

- No. 701—Set of 12 snares, with snare butt, orchestra size, price \$.....
- No. 707—Set of 12 snares with snare butt, band size, price.... ..

Silk Wire Drum Snares



Our silk wire snares are made of pure silk core wound carefully with a non-rusting or non-cording wire. These snares are easy to set and will not cut the head.

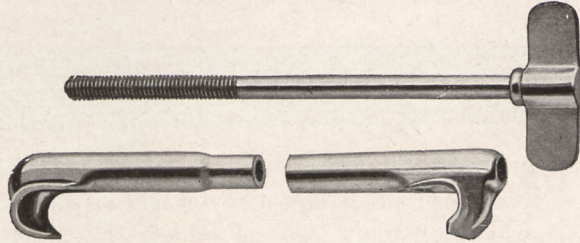
- No. 702—White silk wire wound snares with snare butt, set of 12.
price \$.....
- No. 706—J. C. Deagan tuning fork, 440A

For prices see price list enclosed.





The New Ludwig Thumb Rods

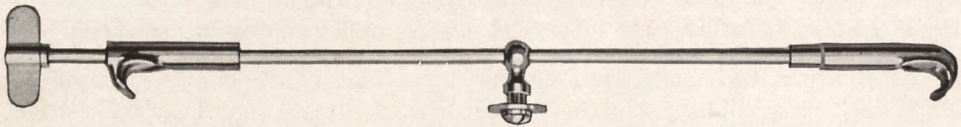


The Ludwig Thumb Rods are the strongest on the market today. We will replace any rod that shows weakness or defective workmanship.

When ordering state size of shell only. We make allowance for counter hoops.

- | | |
|---------------------------------------|---------------------------------------|
| No. 373—For 3-inch shell..... \$..... | No. 377—For 7-inch shell..... \$..... |
| No. 374—For 4-inch shell..... | No. 378—For 8-inch shell..... |
| No. 375—For 5-inch shell..... | No. 379—For 9-inch shell..... |
| No. 376—For 6-inch shell..... | |

Ludwig Center Support Rods



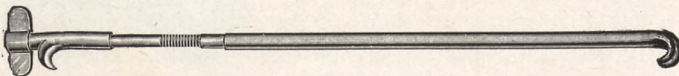
All bass drum rods are made of 7/32" rod, the hooks and wing nut are made of strong brass stamping which makes them rust proof. All parts are handsomely nickeled. The threads are cut perfect.

When ordering state size of shell only. We make allowance for counter hoops.

- | | |
|--|--|
| No. 386—For 10-inch shell..... \$..... | No. 389—For 16-inch shell..... \$..... |
| No. 387—For 12-inch shell..... | No. 390—For 18-inch shell..... |
| No. 388—For 14-inch shell..... | No. 391—For 20-inch shell..... |

Ludwig Long Tube Brass Rods

Ludwig Long Tube Rods made of brass, nickel-plated and polished, have take-up of 2 1/2". When ordering state size of shell only. We make allowance for counter hoops.



- | | |
|--|--|
| No. 367—For 10-inch shell..... \$..... | No. 370—For 16-inch shell..... \$..... |
| No. 368—For 12-inch shell..... | No. 371—For 18-inch shell..... |
| No. 369—For 14-inch shell..... | No. 372—For 20-inch shell..... |

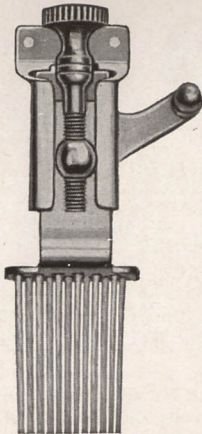
In ordering state size of shell only.

Notice—We have discontinued all 1/16" bass drum rods in favor of the improved type of 7/32".

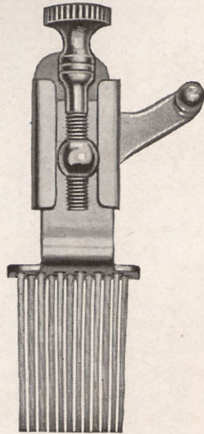
For prices see price list enclosed.



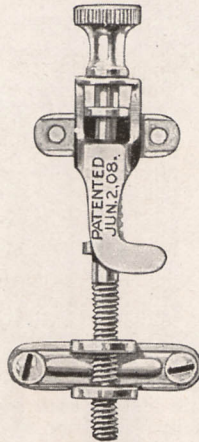
Ludwig Patented Snare Strainers



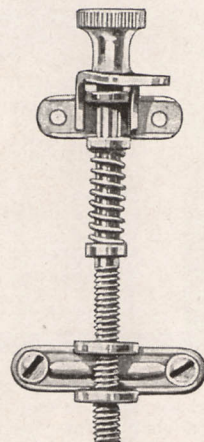
No. 339



No. 338



No. 341



No. 341

Ludwig Combination Patent Snare Strainer and Muffler

A new patent snare strainer that absolutely keeps snares adjusted. The sliding arrangement when snare strainer is thrown off prohibits snares from becoming crossed. A self-locking lever absolutely holds snares rigid when snares are engaged. Snares are adjusted by a thumbscrew to proper adjustment and then remain there. Throw-off does not interfere with snares or get them out of adjustment. All parts are nickel-plated and polished. The only real snare strainer and muffler that will eliminate your snare troubles.

No. 338—Snare strainer for all metal drums or any drum where attached to shell, price \$.....

No. 339—Snare strainer used on hoop of drums, price \$.....

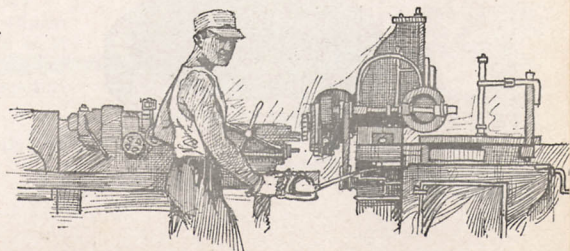
Tango Throw Off Strainer

The Ludwig Tango Muffler is a very simple and at the same time a very effective strainer. The main feature is the spring lever action making this a very quick acting and a positive snare release. They must go down by force of the compression spring.

This strainer is designed for use on the counter hoop only. In ordering be sure to state size of your drum (give depth of shell only.)

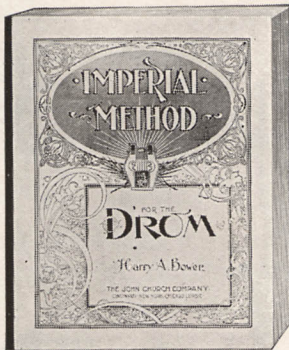
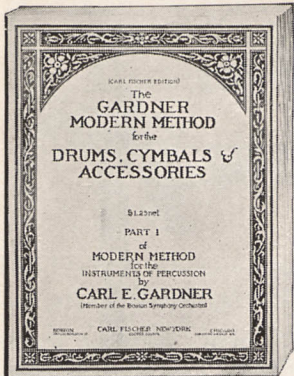
- No. 341A—For 3" shell..... \$.....
- No. 341B—For 4" shell..... \$.....
- No. 341C—For 5" shell..... \$.....
- No. 341D—For 6½" shell..... \$.....

For prices see price list enclosed.



Reliable Service
Ludwig & Ludwig

Drum Instructors



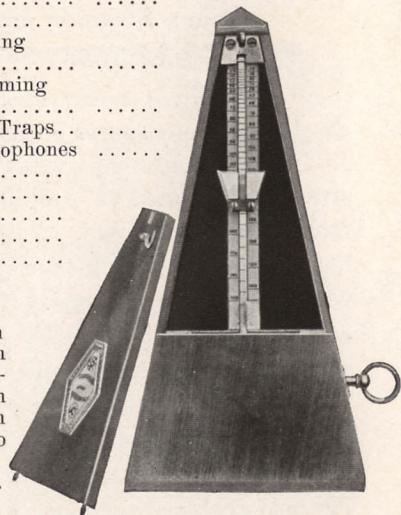
Every drummer should equip himself with the books of every known authority on drums. Perhaps there is one little idea in each book that is worth untold value to you. There may be a chance for you to increase your efficiency. We have carefully selected the books we offer and believe them to deal very thoroughly on their various subjects.

- No. 724—Carl Gardner's Method No. 1, for Drums, Cymbals and Accessories \$.....
- No. 725—Carl Gardner's Method No. 2, for Bells, Xylophones, Marimba and Chimes.....
- No. 726—Carl Gardner's Method No. 3, for Tympani.....
- No. 727—Carl Gardner's Method, all branches of drumming complete
- No. 735—Harry Bower's Method, all branches of drumming complete
- No. 736—Harry Bower's Method No. 1, for Drums and Traps.. ..
- No. 737—Harry Bower's Method No. 2, for Bells and Xylophones
- No. 738—Harry Bower's Method No. 3, for Tympani.. \$.....
- No. 739—Imperial Method for Drums.....
- No. 734—Carl Gardner's "The Military Drummer".....
- No. 728—Universal Album for Drums.....
- No. 729—Universal Album for Bugle.....

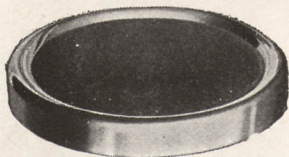
Metronomes

Only through the use of the Metronome can a musician thoroughly familiarize himself with the proper tempos in which various movements should be taken. To the Drummer, however, the Metronome is particularly valuable, in fact, indispensable, inasmuch as RHYTHM is his stock in trade, and through the use of the Metronome his tempo will become absolutely even and steady.

- No. 1928. Without bell \$.....
- No. 1929. With bell to mark initial beat of each measure



Silent Drum (Practice Pad)



The Ludwig Silent Drum or Practice Pad gives the same results as obtained from a drum, but eliminates the noise. It is made of nickel-plated outside hoop, with solid felt center to give proper rebound to sticks, 6½ inches in diameter. Indispensable to student.

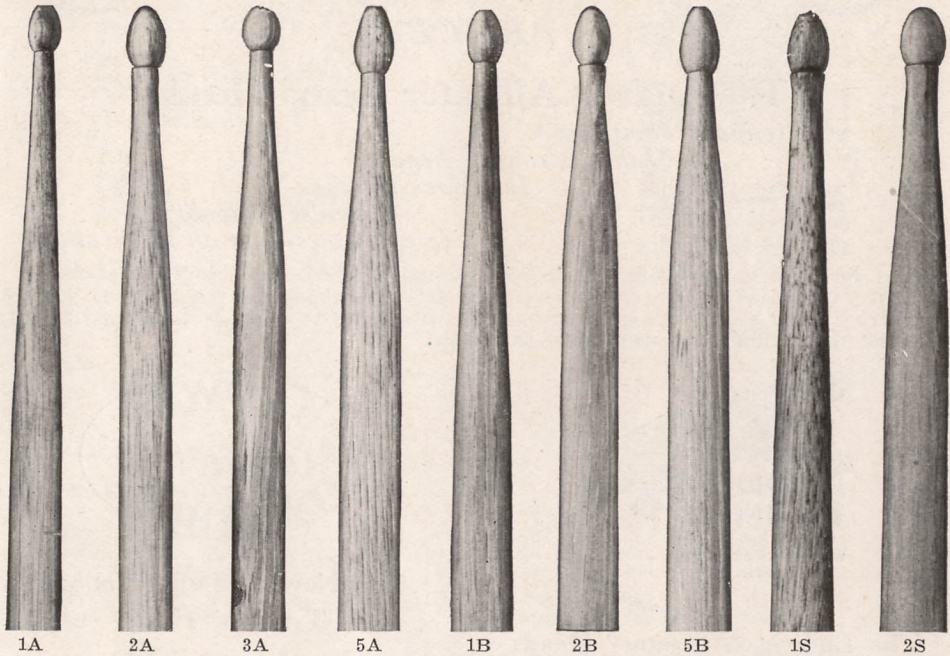
- No. 730..... \$.....

For prices see price list enclosed.



Snare Drum Sticks


Tough drum sticks that will stay with you and withstand the hardest kind of usage—that's exactly the kind of sticks we produce. Made of selected second growth hickory that is tougher than all other wood. All Ludwig sticks are stamped with our name and model on the end. When you become accustomed to a model, insist on having it. If they have our name on them you can depend on having the best sticks our experience can produce.



- | | | |
|----------------------------|----------------------------|----------------------------|
| Orchestra Models | Band Models | Street Models |
| No. 585—1A, price..\$..... | No. 586—1B, price..\$..... | No. 587—1S, price..\$..... |
| No. 588—2A, price..\$..... | No. 589—2B, price..\$..... | No. 590—2S, price..\$..... |
| No. 584—3A, price..\$..... | No. 592—5B, price..\$..... | |
| No. 591—5A, price..\$..... | | |

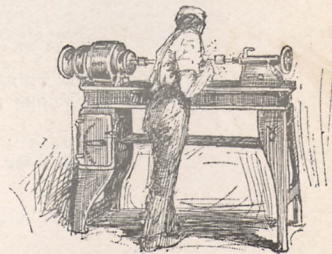
Ludwig Snakewood Sticks

The sticks are made in two models from selected stock suitable for orchestra or band. We offer here the finest snakewood sticks that it is possible to turn out and if you want a high grade drum stick, we know these will satisfy you.


 No. 603—Orchestra model, price.....\$.....


 No. 604—Band model, price.....\$.....

For prices see price list enclosed.





Drum Heads
Improved
100%
BY A NEW
PROCESS



The Ludwig Alligator Brand Heads

*Eliminate dampness
Makes stronger heads
Improves the tone
Retains malleability
Is a process—not an application*

The New "Alligator Heads," made by a scientific process developed and perfected in our own tannery. They are clear and transparent. We claim and can prove to you that drum heads made by this new process are stronger than any other head on the market today, and that they will resist moisture and dampness.



The New Ludwig "Vellour" Tympani Heads

Vellour Brand tympani heads are made from strictly selected fresh calf skins, by an entirely new process. They are even in texture, perfectly smooth and malleable, yet unstretchable. We guarantee them to produce a real tympani tone without the usual hardness, and positively perform better duty in damp weather than any tympani head on the market today. When you purchase a Ludwig Vellour Head you get the result of scientific knowledge applied to the best material.

The Ludwig "Alligator" Heads

The Alligator Brand are all transparent, made for batter or snare side, but you must specify which is wanted, and always look for the trade mark (this is for your protection), and insist that your dealer give you a Ludwig Alligator Brand Head.

No.	For Batter Side	Each
3900	—18" for 14" drum...	\$.....
3901	—19" for 15" drum...
3902	—20" for 16" drum...
3903	—21" for 17" drum...
3904	—22" for 18" drum...
No.	For Snare Side	Each
3920	—18" for 14" drum...	\$.....
3921	—19" for 15" drum...
3922	—20" for 16" drum...
3923	—21" for 17" drum...
3924	—22" for 18" drum...

Any of the above heads can be furnished Tucked on Hoops as follows, extra:

No.	Each
640—Hoop	\$.....
650—Tucking

No.	Each
620—28" for 24" tympani..	\$.....
621—30" for 25" tympani..
622—32" for 26" tympani..
623—33" for 27" tympani..
624—34" for 28" tympani..
625—36" for 30" tympani..

For prices see price list enclosed.



Ludwig Drum Heads

Calf skins don't grow white. It takes the Ludwig process to make 'em white. And while it is doing that, it makes that calf skin into a batter head that is reliable and will not fail you at a critical moment.

Ludwig Genuine White Calf is made from choicest skins, cured without chemicals, hand shaved to an even thickness.



Trade-Mark—Ludwig Whitecalf

No.	For Batter Heads Only	Price
909—17"	for 13" drum.....	\$.....
910—18"	for 14" drum.....
911—19"	for 15" drum.....
912—20"	for 16" drum.....
913—21"	for 17" drum.....
914—22"	for 18" drum.....
No.	Bass Drum	Price
607—28"	for 24" drum.....	\$.....
608—30"	for 26" drum.....
609—32"	for 28" drum.....
610—34"	for 30" drum.....
611—36"	for 32" drum.....
612—38"	for 34" drum.....
613—40"	for 36" drum.....



Trade-Mark

Crown Brand Head

CROWN-HEAD

No.	For Snare Side Only	Price
<i>100% Transparent</i>		
919—17"	for 13" drum.....	\$.....
920—18"	for 14" drum.....
921—19"	for 15" drum.....
922—20"	for 16" drum.....
923—21"	for 17" drum.....
924—22"	for 18" drum.....
No.	For Batter Side Only	Price
<i>100% Transparent</i>		
899—17"	for 13" drum.....	\$.....
900—18"	for 14" drum.....
901—19"	for 15" drum.....
902—20"	for 16" drum.....
903—21"	for 17" drum.....
904—22"	for 18" drum.....

Beam House of Our Drum Head Plant

It is well known that the Chicago market is a center of raw material for drum heads.

Raw material is naturally the basis of the finished product. To make the best heads, the best skins must be used. They must be strictly fresh and of a perfect take off, free from cuts or other defects. To obtain such skins they must be personally selected by a man who understands the tanning and who knows by actual experience just what the finished product should be.

We have this man, Mr. Lucian Bon Christiano, Superintendent of our drum head plant, is the inventor of the alligator process and a thorough and practical drum head maker. Mr. Christiano is a professional drummer as well, a member of the Federation of Musicians and well known in the profession as a drummer.

This, then, gives you the assurance that you trade with a house that has the best source of raw material to select from, that has the best plant to work in and the man that knows your requirements.



For prices see price list enclosed.



Useful Hints

Warm water will shrink a drum head. The temperature for soaking drum heads should not be over 50 degrees, or about the temperature of rain water. Icy cold water will cause a head to dry hard.

Tympani heads should not be sponged often, it makes them hard. It is advisable to soak them well once a month if they are in constant use. Less than that if not used often. This sponging should be done on both sides. It will revive the heads. At the same time they can be stretched or shrunk whichever they may need.

In case the low notes cannot be obtained on tympani, it is necessary to stretch the heads in the soaking process. In damp climates where the high notes cannot be obtained it is necessary to shrink them.

The soaking is most convenient after the performance. Use a sponge and soak well on both sides, then allow the water to soak in the head and apply the sponge a second time until the head is soft and flabby, then mop (not wipe) the water off with a cloth and apply tension to stretch, but to shrink allow the head to dry on the hoop without putting the counter hoop on. In either case, it is necessary to allow 20 hours for complete drying.

Tucking Tympani Heads

Follow the usual instructions for tucking the same as snare drum but allow the head to dry on the hoop, and allow 24 hours for drying. The head then will be tight which makes it necessary to again moisten the head on both sides in order to stretch the head on the kettle to permit tuning to low notes. After this soaking and stretching operation the head must again dry for 20 hours. It will be seen that this is a delay and would put tympani out of use for several days. It is advisable therefore to have a set of extra heads on the hoop ready for emergency. We can supply tympani heads on the hoop for Ludwig tympani.

Oil Your Tympani

All moving parts of a tympany should be well oiled, preferably with vaseline or a heavy machine oil.

Tympani heads may make a cracking noise when tuning, due to dryness of the kettle and head. This can be remedied by rubbing paraffine on the edge of the kettle.

The Care of Your Drum

It is not advisable to release the tension of a snare drum after using. The most successful drummers adjust their drum when they are ready to use it and as a rule leave it alone as much as possible when it is in good working order. This does not mean that you should hesitate to apply extra tension on a damp day, but this extra tension for safety sake should be released after using. The tension screws should be well oiled or greased often, preferably vaseline or a thick oil.

In bass drums remember that the diameter of the shell and the weight and quality of heads determines volume of tone, not the depth of the shell which really has very little to do with volume.

Thumbrods are measured by the shell, not by the actual length of the rod. A 4" rod means a rod for a drum that has a 4" shell. In ordering rods, state the size of your shell, not the measurement over-all. We allow for the counter hoops.



Avoid Damage To Drum Heads

Careless tucking is the cause of much damage to drum heads, due generally to over or under soaking fast drying or undue strain before the head is dry enough for use. If a head is soaked too much it will tear either in tucking or in the drying immediately after. If the head is not soaked enough it will slip on the flesh hoop immediately after using and cause the head to tear.

The following hints will be of benefit:

Alligator heads are water and moisture resisting and stronger than any other head only after they are properly tucked, but to retain their pliability which is so essential to good drum tone, they cannot be made absolutely waterproof. The **alligator** head is made by a process that will not injure the tone, not by an application or coating that will pound off, peel or crack and cause the head to break but by a process that actually strengthens the head.

To facilitate correct tucking the outer or tucking edge of the **alligator** head is absorbent to facilitate proper tucking while the inner exposed or playing surface will remain damp and moisture resisting. Allow four inches for tucking, measuring from shell diameter.

For tucking snare heads soak in water of moderate temperature for three minutes. For batter heads 5 minutes. After soaking lay the head on a flat surface smooth side down. Place the flesh hoop on the head. If the head is the correct size, about $1\frac{1}{2}$ inches will extend on each side. If larger than this, trim to that size. Begin tucking by lapping the head over the flesh hoop with the fingers and under the hoop well with a tucking tool or dull end of a tablespoon. Be sure to get the head well under and without undue strain as the head will dry tight. Then mop the water from the head with a towel and place on the drum immediately, but do not put the counter hoop on until the head is thoroughly dry. Do not rush a head. Allow 24 hours of slow drying, then put the counter hoop on and apply tension; it will then be ready for use.

Heads On Hoop

We can supply snare drum heads on hoop for all Ludwig drums, but cannot ship bass drum heads on hoop for the reason that heads contract when dry and in the case of bass drum heads would break the hoop in transit. This may also happen to snare drum heads if they are not used immediately. In case they are drawn out of shape, it is advisable to moisten them very slightly before putting on the drum and allow at least four hours to dry.

OUR GUARANTEE

We guarantee that all Ludwig branded heads are made from the finest and strictly fresh material in our modern and fully equipped tannery by skilled workmen, and that they are free from all imperfection or blemishes. We will cheerfully exchange or make refund for any heads that are returned to us before they are soaked. But, under no circumstances will we exchange heads after they have been soaked in water or used on a drum.



Index

	Page		Page
All-in-one Trap.....	76	Jingle Tom Sticks.....	68
All Metal Drum.....	7-10	Jazz Sticks.....	68
Alternator.....	50-51	Lion and Bear Imitation.....	75
All Metal Drum Repair Parts.....	48	Marimba.....	58
Baby Cry.....	77	Musettes, Chinese.....	63
Baton, Drum Majors.....	17	Metronomes.....	90
Baton, Cords.....	17	Motorcycle Klaxon.....	81
Bells, Orchestra.....	52-53	Nose Blow Imitation.....	80
Bells, Sleigh.....	74	Outfits, Drum.....	20-21-22
Bugles.....	16	Pedals, Drum.....	42-43-44-47
Carnival Rooter.....	70	Pedals, Ball Cover.....	44
Carriage, Drum.....	28	Pedal, Repair Parts.....	48
Cases, Fibre, Drum and Trap.....	40	Practice Pad.....	90
Cases, Mackintosh.....	41	Railroad Imit.....	83
Castanets.....	72	Railroad Bell Imit.....	83
Cat Meow.....	77	Rattle, double, with crank.....	64
Chimes, Cathedral.....	60	Rods, Drum.....	88
Clog Mallets.....	75	Rooster Crow.....	77
Cow Bawl.....	77	Sand Blocks.....	81
Cow Bells.....	66-67-86	Shot Cushion.....	74
Cuckoo.....	78	Silent Drum.....	90
Cymbals.....	62-63-71	Slap Stick.....	75
Cymbal Damper.....	45	Slings, Snare and Bass Drum.....	84
Cymbal Beater.....	85	Snares, Drum.....	87
Cymbal Pad.....	85	Snore Imitation.....	80
Dog Bark.....	80	Spurs.....	46
Drums, All Metal.....	7-10	Stands, Drum.....	49
Drums, Bass.....	24-25-26-27-29	Stands, Tympani.....	36
Drums, Bass Inspiration.....	12	Sticks, Bass Drum.....	38
Drum Ears.....	86	Sticks, Snare Drum.....	91
Drums, Snare Inspiration.....	12	Sticks, Tympani.....	39
Drums, Snare, Thumbrod.....	13-14-15	Strainers, Snare.....	89
Drums, Snare, Wood Shell.....	11	Sure Fire Machine.....	83
Drums, Street, Boys.....	16	Tambourines.....	73
Drums, Street.....	18-19	Telephone Bell.....	81
Duck Quack.....	80	Telegraph and Typewriter.....	81
Fifes, Metal.....	17	Tom-Toms, Chinese.....	63
Fifes, Mouthpieces.....	17	Tom-Toms, Oriental.....	71
Gongs, Chinese.....	63	Tom-Toms, Ludwig tuned.....	66
Gongs, Fire Engine.....	82	Triangles.....	73
Holders, Cymbal.....	46-64-65-68-85	Trunks, Tympani.....	37
Holders, Wood Block.....	69	Tuning Pipe, Tympani.....	36
Holders, Wood Block, Cowbell and Tom-Tom.....	70	Tuning Fork, Deagan.....	87
Holders, Tom-Tom.....	70	Truck, Drum.....	28
Holders, Wood Block and Squawker.....	70	Tympani, Hand tuning.....	30-31
Holders, Wood Block and Triangle.....	71	Tympani, Pedal tuning.....	32-35
Holders, Music.....	85	Whistles, Bird.....	76
Hen Cackle.....	77	Whistles, Cyclone Wind.....	76
Heaters, Drum, Electric.....	82	Whistles, Drum Majors.....	76
Heads, Drum, Tympani.....	92-93	Whistles, Four-in-one.....	78
Hooks, Roller.....	86	Whistles, Song.....	79
Horn, Hand Samson.....	81	Whistles, Three-Tone, Metal.....	78
Horse Trot Imitation.....	74	Wood Blocks, Ludwig two-tone and Holder.....	69
Instructors, Tympani.....	37	Wood Block, Chinese.....	71
Instructors, Drum.....	90	Wood Block, Piccolo.....	71
Jingle Tom.....	68	Xylophones.....	54-55-56-57-59
		Xylophone Hammers.....	61

