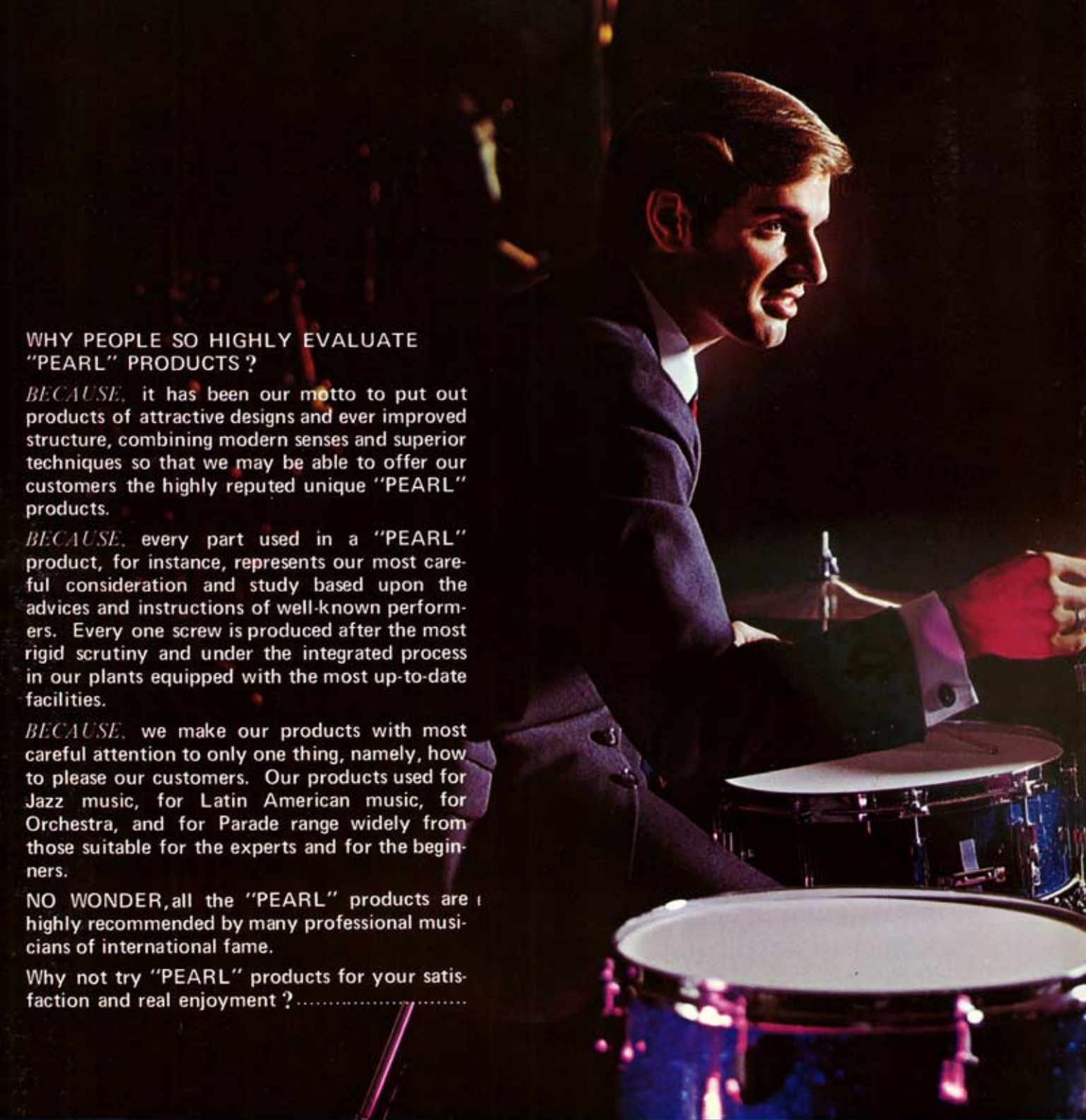


# PEARL DRUMS & ACCESSORIES

CATALOG 69







**WHY PEOPLE SO HIGHLY EVALUATE  
"PEARL" PRODUCTS ?**

*BECAUSE*, it has been our motto to put out products of attractive designs and ever improved structure, combining modern senses and superior techniques so that we may be able to offer our customers the highly reputed unique "PEARL" products.

*BECAUSE*, every part used in a "PEARL" product, for instance, represents our most careful consideration and study based upon the advices and instructions of well-known performers. Every one screw is produced after the most rigid scrutiny and under the integrated process in our plants equipped with the most up-to-date facilities.

*BECAUSE*, we make our products with most careful attention to only one thing, namely, how to please our customers. Our products used for Jazz music, for Latin American music, for Orchestra, and for Parade range widely from those suitable for the experts and for the beginners.

**NO WONDER**, all the "PEARL" products are highly recommended by many professional musicians of international fame.

Why not try "PEARL" products for your satisfaction and real enjoyment ?.....

**CONTENTS**

PRESIDENT OUTFIT .....	2, 3
"PEARL" DRUM FEATURES .....	4, 5
DYNA-MAX OUTFIT .....	6
BIG-SHOT OUTFIT .....	7
THUNDER-KING OUTFIT .....	8
FRONTIER OUTFIT .....	9
PLANET OUTFIT .....	10
CHALLENGER OUTFIT .....	11
VALENCIA OUTFIT .....	12
JUNIOR OUTFIT .....	13
SNARE DRUMS .....	14,15
COMBO DRUM KITS AND TIMBALES .....	16
DRUM PEDALS .....	17
HI-HAT STANDS .....	18





CYMBAL STANDS AND SNARE STANDS .....	19
DRUMMER'S THRONE, COW-BELLS, BELL-BLOCK COMBINATION SET, WOOD-BLOCK AND BASS DRUM ANCHOR .....	20
CYMBALS .....	21
PLASTIC HEADS, WIRE BRUSHES AND DRUM STICKS .....	22
PARTS .....	23,24
ACCESSORIES FOR BASS DRUM AND FLOOR TOM-TOM .....	25
PACKING SPECIFICATIONS .....	26,27
COLOR FINISHES .....	28



A WHOLE VIEW OF PEARL NEW ASSEMBLY  
PLANT AND OFFICE



PEARL DRUM ASSEMBLY CONVEYER SYSTEM



DRILL DEPARTMENT OF DRUM SHELL



PACKING DEPARTMENT

## PRESIDENT DRUM OUTFIT SERIES

Pearl Drum Company offers its sensational "President" Drum Outfit, the newest and the most exciting quality drum outfit made of plastic fiber for professional drummers of the world. Here are some outstanding features of the New "President" series.

"President" Drum Outfit Shell is made of unique plastic fiber and its quality features are itemized below:-

- \* Outstanding Durability
- \* Uniform Thickness
- \* Water Resistance
- \* Smooth Finish
- \* Non-Reinforcing Ring inside of drum shell
- \* Brilliant Tone
- \* Non-Warping Perfect Circle
- \* More Sounds and More Power

Attractive style lugs have been designed by our Pearl engineering staffs.

"President" Drum Outfit Snare Strainer was newly developed by the Pearl engineering staffs. By means of a new horizontal switch that permits ultra-fine height adjustments, sound produced is crystal clear and the snare strainer elicits sound effects of the highest quality.





## PRESIDENT OUTFIT

### P-22 Outfit

- |        |       |                                                                                   |
|--------|-------|-----------------------------------------------------------------------------------|
| 1-pce. | P-222 | Bass Drum (14"x22"), with pearl inlaid metal hoops.                               |
| 1-pce. | 732   | Inner Felt Muffler, attached.                                                     |
| 1-pce. | 715   | Height adjustable Cymbal Holder, chrome finish, mounted.                          |
| 1-pce. | 719   | New "Free Adjustable" Tom-Tom Holder, chrome finish, mounted.                     |
| 1-pr.  | 730   | Internal Spurs, with rubber tips, chrome finish, mounted.                         |
| 1-pce. | P-514 | Snare Drum (5½"x14"), with inner tone control. 10-tensions.                       |
| 1-pce. | P-213 | Tom-Tom (9"x13"), with inner tone control.                                        |
| 1 pce. | P-216 | Floor Tom-Tom (16"x16"), with inner tone control and bent shaped legs.            |
| 1 pce. | 805   | Direct-pull Hi-Hat Stand with rubber-plated footboard and anchors, chrome finish. |
| 1-pce. | 703   | Deluxe Cymbal Stand, chrome finish.                                               |
| 1-pce. | 706   | Super-Grip Snare Stand, chrome finish.                                            |
| 1-pce. | 710   | Deluxe Drum Pedal, with rubber-plated footboard and double springs.               |
| 1-pr.  | 722B  | Loopend Wire Brushes.                                                             |
| 1-pr.  | 725   | Drum Sticks, oak made.                                                            |

- For Other Accessories and Cymbals, see page 20-21 -

\*\*\*\*\*

- Available in choice of small size drums as below: -

- |       |                                                               |
|-------|---------------------------------------------------------------|
| P-220 | Bass Drum (14"x20"), with pearl inlaid metal hoops.           |
| 732   | Inner felt muffler, attached.                                 |
| 715   | Height adjustable Cymbal Holder, chrome finish, mounted.      |
| 719   | New "Free Adjustable" Tom-Tom Holder, chrome finish, mounted. |
| 730   | Internal Spurs, with rubber tips, chrome finish, mounted.     |
| P-212 | Tom-Tom (8"x12"), with inner tone control.                    |



Finish shown: Marine Pearl 13

# "PEARL" DRUM FEATURES





1. COUNTER HOOP

Highly polished chrome plated, perfect circle and exactly right angle hoop will catch drum head perfectly. Sound effect is excellent.

2. METAL HOOPS FOR BASS DRUM

"Pearl" Bass Drums increase in tone brilliance and produce more varieties of sounds by attaching strong perfect circle and beautiful chrome finished steel hoops. Pearl inlaid.

3. SNARE STRAINER

Unique Snare release permits maintenance of uniform control in both "on" and "off" positions. Precision adjustment lever permits quick and easy return to original tension setting.

4. CYMBAL TILTERS

Special Ratchet Lock design. Easy to set at any angle and free from slipping or becoming loose.

5. TENSION RODS

Chrome finish acute square head of rod will tighten easily and certainly.

6. NEW FREE ADJUSTABLE TOM-TOM HOLDERS (Patent Pending)

All-Directional. Simple and Strong. Smoothly interchangeable. Fastest Set-up and Knock-down with one screw on the top of holder. Standard Drum Key does it all.

7. SHELLMOUNT CYMBAL HOLDER

A telescopic and L-angle type shellmount cymbal-holder is freely available at any height, angle and position by sliding the rods. Chrome finish die-cast bracket will keep it exactly in place with standard tension key.

8. T-HANDLE ROD WITH HOOK FOR BASS DRUM

Hook will fit in hoop completely and T-Handle is designed for easy tightening by any players.

9. LEGS FOR FLOOR TOM-TOM

Stylish rubber-tipped bent shaped legs provide an extra wide angle stance for the floor tom-tom. Keep it exactly in place.

10. SPURS FOR BASS DRUM

Bass Drum has rubber-tipped spurs retractable into drum to the utmost portable convenience.

## DYNA-MAX OUTFIT

### 68 Outfit (9-ply shells)

1-pce.	2322MH	Bass Drum (14" x 22"), with pearl inlaid metal hoops.
1-pce.	732	Inner Felt Muffler, attached.
1-pce.	715	Height adjustable Cymbal Holder, chrome finish, mounted.
1-pce.	719	New "Free Adjustable" Tom-Tom Holder, chrome finish, mounted.
1-pr.	730	Internal Spurs, with rubber tips, chrome finish, mounted.
1-pce.	2414	Snare Drum (5½" x 14"), with inner tone control. 10-tensions.
1-pce.	2213	Tom-Tom (9" x 13"), with inner tone control.
1-pce.	2216	Floor Tom-Tom (16" x 16"), with inner tone control and bent shaped legs.
1-pce.	805	Direct-pull Hi-Hat Stand, with rubber-plated footboard and anchors, chrome finish.
1-pce.	703	Deluxe Cymbal Stand, chrome finish.
1-pce.	706	Super-Grip Snare Stand, chrome finish.

1-pce.	710	Deluxe Drum Pedal, with rubber-plated footboard and double springs.
1-pr.	722B	Loopend Wire Brushes.
1-pr.	725	Drum Sticks, oak made.
1-pr.	314H	14" Hi-Hat Cymbals.
1-pce.	318	18" Cymbal.
1-pce.	320	20" Cymbal.

\*\*\*\*\*

- Available in choice of small size Drums as below -

2320MH	Bass Drum (14" x 20"), with pearl inlaid metal hoops.
732	Inner Felt Muffler, attached.
715	Height adjustable Cymbal Holder, chrome finish, mounted.
719	New "Free Adjustable" Tom-Tom Holder, chrome finish, mounted.
730	Internal Spurs, with rubber tips, chrome finish, mounted.
2212	Tom-Tom (8" x 12"), with inner tone control.



Finish shown : Blue Grain Pearl 29



## BIG-SHOT OUTFIT

### 70 Outfit (9-ply shells)

- 2-pcs. T-220MH Bass Drum (14"x20"), with pearl in-laid metal hoops.
- 2-pcs. 732 Inner Felt Muffler, attached.
- 1-pce. 715 Height adjustable Cymbal Holder, chrome finish, mounted.
- 1-pce. 720 Bracket with Hi-Hat Stand attachment, chrome finish, mounted.
- 2-prs. 730 Internal Spurs, with rubber tips, chrome finish, mounted.
- 1-pce. 2414 Snare Drum (5½"x14"), with inner tone control, 10-tensions.
- 1-pce. 2213 Tom-Tom (9"x13"), with inner tone control.

- 1-pce. 2212 Tom-Tom (8"x12"), with inner tone control.
- 1-pce. 2216 Floor Tom-Tom (16"x16"), with inner tone control and bent shaped legs.
- 1-pce. 805 Direct-pull Hi-Hat Stand, with rubber-plated footboard and anchors, chrome finish.
- 1-pce. 703 Deluxe Cymbal Stand, chrome finish.
- 1-pce. 706 Super-Grip Snare Stand, chrome finish.
- 2-pcs. 710 Deluxe Drum Pedal, with rubber-plated footboard and double springs.
- 1-pce. 789 Double Tom-Tom Stand, chrome finish.
- 1-pce. 750 Drummer's Throne.
- 1-set 736 Bell-Block Combination Set. Consisting of: 726-M 5" Cow-Bell, 712 Wood-Block and Combination Holder.
- 1-pr. 722B Loopend Wire Brushes.
- 1-pr. 725 Drum Sticks, oak made.
- 1-pr. 314H 14" Hi-Hat Cymbals.
- 1-pce. 318 18" Cymbal.
- 1-pce. 320 20" Cymbal.



Finish shown: Sparkling Red Pearl 5



## THUNDER-KING OUTFIT

### 67 Outfit (9-ply shells)

- 1-pce. D-220MH Bass Drum (14"x20"), with pearl inlaid metal hoops.
- 1-pce. 732 Inner Felt Muffler, attached.
- 1-pce. 713 New "Free Adjustable" Double Tom-Tom Holder, chrome finish, mounted.
- 1-pr. 730 Internal Spurs, with rubber tips, chrome finish, mounted.
- 1-pce. 4614 Metal Snare Drum (5½"x14"), with inner tone control, chrome finish. 8-tensions.
- 1-pce. 2213 Tom-Tom (9"x13"), with inner tone control.
- 1-pce. 2212 Tom-Tom (8"x12"), with inner tone control.
- 1-pce. 2216 Floor Tom-Tom (16"x16"), with inner tone control and bent shaped legs.

- 1-pce. 700 Hi-Hat Stand, chrome finish.
- 2-pcs. 703 Deluxe Cymbal Stand, chrome finish.
- 1-pce. 705 Deluxe Snare Stand, chrome finish.
- 1-pce. 710 Deluxe Drum Pedal, with rubber-plated footboard and double springs.
- 1-pce. 750 Drummer's Throne.
- 1-set 736 Bell-Block Combination Set. Consisting of: 726-M, 5" Cow-Bell, 712 Wood-Block and Combination Holder.
- 1-pr. 722B Loopend Wire Brushes.
- 1-pr. 725 Drum Sticks, oak made.
- 1-pr. 314H 14" Hi-Hat Cymbals.
- 1-pce. 318 18" Cymbal.
- 1-pce. 320 20" Cymbal.



Finish shown: Sparkling Silver Pearl 3



## FRONTIER OUTFIT

### 61 Outfit (9-ply shells)

- 1-pce. 2222MH Bass Drum (14"x22"), with pearl inlaid metal hoops.
- 1-pce. 732 Inner Felt Muffler, attached.
- 1-pce. 715 Height adjustable Cymbal Holder, chrome finish, mounted.
- 1-pce. 719 New "Free Adjustable" Tom-Tom Holder, chrome finish, mounted.
- 1-pr. 730 Internal Spurs, with rubber tips, chrome finish, mounted.
- 1-pce. 4614 Metal Snare Drum (5½"x14"), with inner tone control, chrome finish. 8-tensions.
- 1-pce. 2213 Tom-Tom (9"x13"), with inner tone control.
- 1-pce. 2216 Floor Tom-Tom (16"x16"), with inner tone control and bent shaped legs.

- 1-pce. 700 Hi-Hat Stand, chrome finish.
- 1-pce. 703 Deluxe Cymbal Stand, chrome finish.
- 1-pce. 705 Deluxe Snare Stand, chrome finish.
- 1-pce. 710 Deluxe Drum Pedal, with rubber-plated footboard and double springs.
- 1-pce. 750 Drummer's Throne.
- 1-pr. 722B Loopend Wire Brushes.
- 1-pr. 725 Drum Sticks, oak made.
- 1-pr. 314H 14" Hi-Hat Cymbals.
- 1-pce. 318 18" Cymbal.
- 1-pce. 320 20" Cymbal.

\*\*\*\*\*

- Available in choice of small size drums as below: -

- 2220MH Bass Drum (14"x20"), with pearl inlaid metal hoops
- 732 Inner Felt Muffler, attached.
- 715 Height adjustable Cymbal Holder, chrome finish, mounted.
- 719 New "Free Adjustable" Tom-Tom Holder, chrome finish, mounted.
- 730 Internal Spurs, with rubber tips, chrome finish, mounted.
- 2314 Snare Drum (5½"x14"), with inner tone control. 8-tensions.
- 2212 Tom-Tom (8"x12"), with inner tone control.
- 2217 Floor Tom-Tom (14"x14"), with inner tone control and bent shaped legs.



*Finish shown: Oyster Pearl 24*

## PLANET OUTFIT

### 55 Outfit (9-ply shells)

- |        |        |                                                                                 |
|--------|--------|---------------------------------------------------------------------------------|
| 1-pce. | 2218MH | Bass Drum (12"x18"), with pearl in-laid metal hoops.                            |
| 1-pce. | 732    | Inner Felt Muffler, attached.                                                   |
| 1-pce. | 715    | Height adjustable Cymbal Holder, chrome finish, mounted.                        |
| 1-pce. | 719    | New "Free Adjustable" Tom-Tom Holder, chrome finish, mounted.                   |
| 1-pr.  | 730    | Internal Spurs, with rubber tips, chrome finish, mounted.                       |
| 1-pce. | 4614   | Metal Snare Drum (5½"x14"), with inner tone control, chrome finish. 8-tensions. |
| 1-pce. | 2212   | Tom-Tom (8"x12"), with inner tone control.                                      |
| 1-pce. | 2217   | Floor Tom-Tom (14"x14"), with inner tone control and bent shaped legs.          |
| 1-pce. | 700    | Hi-Hat Stand, chrome finish.                                                    |
| 1-pce. | 702    | Cymbal Stand, chrome finish.                                                    |
| 1-pce. | 704    | Snare Stand, chrome finish.                                                     |
| 1-pce. | 710    | Deluxe Drum Pedal, with rubber-plated footboard and double springs.             |
| 1-pr.  | 722B   | Loopend Wire Brushes.                                                           |
| 1-pr.  | 725    | Drum Sticks, oak made.                                                          |
| 1-pr.  | 312H   | 12" Hi-Hat Cymbals.                                                             |
| 1-pce. | 314    | 14" Cymbal.                                                                     |
| 1-pce. | 316    | 16" Cymbal.                                                                     |



Finish shown: Red Oyster Pearl 23



## CHALLENGER OUTFIT



### 45 Outfit(9-ply shells)

- |        |       |                                                                        |
|--------|-------|------------------------------------------------------------------------|
| 1-pce. | C-120 | Bass Drum (14"x20"), with pearl inlaid metal hoops                     |
| 1-pce. | 732   | Inner Felt Muffler, attached.                                          |
| 1-pce. | 715   | Height adjustable Cymbal Holder, chrome finish, mounted.               |
| 1-pce. | 719   | New "Free Adjustable" Tom-Tom Holder, chrome finish, mounted.          |
| 1-pr.  | 729   | Internal Spurs, with rubber tips, chrome finish, mounted.              |
| 1-pce. | C-314 | Snare Drum (5½"x14"), with inner tone control, 6-tensions.             |
| 1-pce. | C-112 | Tom-Tom (8"x12"), with inner tone control.                             |
| 1-pce. | C-117 | Floor Tom-Tom (14"x14"), with inner tone control and bent shaped legs. |
| 1-pce. | 700   | Hi-Hat Stand, chrome finish.                                           |
| 1-pce. | 704   | Snare Stand, chrome finish.                                            |
| 1-pce. | 708   | Drum Pedal.                                                            |
| 1-pr.  | 722   | Shake-out Wire Brushes.                                                |
| 1-pr.  | 725   | Drum Sticks, oak made.                                                 |
| 1-pr.  | 312H  | 12" Hi-Hat Cymbals.                                                    |
| 1-pce. | 316   | 16" Cymbal.                                                            |



Finish shown: Sparkling Blue Pearl 4



## VALENCIA OUTFIT

### 35 Outfit (Center lugs and separate tensions)



- |        |       |                                                               |
|--------|-------|---------------------------------------------------------------|
| 1-pce. | V-120 | Bass Drum (14"x20"), with pearl inlaid metal hoops.           |
| 1-pce. | 732   | Inner Felt Muffler, attached.                                 |
| 1-pce. | 715   | Height adjustable Cymbal Holder, chrome finish, mounted.      |
| 1-pce. | 719   | New "Free Adjustable" Tom-Tom Holder, chrome finish, mounted. |
| 1-pr.  | 729   | Internal Spurs, with rubber tips, chrome finish, mounted.     |
| 1-pce. | V-314 | Snare Drum (5½"x14"), with inner tone control, 6-tensions.    |
| 1-pce. | V-112 | Tom-Tom (8"x12"), with inner tone control.                    |
| 1-pce. | V-117 | Floor Tom-Tom (14"x14"), with inner tone control and legs.    |
| 1-pce. | 700   | Hi-Hat Stand, chrome finish.                                  |
| 1-pce. | 704   | Snare Stand, chrome finish.                                   |
| 1-pce. | 708   | Drum Pedal.                                                   |
| 1-pr.  | 722   | Shake-out Wire Brushes.                                       |
| 1-pr.  | 725   | Drum Sticks, oak made.                                        |
| 1-pr.  | 312H  | 12" Hi-Hat Cymbals.                                           |
| 1-pce. | 316   | 16" Cymbal.                                                   |



*Finish shown: Black Pearl 2*



## JUNIOR OUTFIT

### 10 Outfit (Center lugs and separate tensions)

- |        |         |                                                           |
|--------|---------|-----------------------------------------------------------|
| 1-pce. | J-118MH | Bass Drum (12"x18"), with pearl inlaid metal hoops.       |
| 1-pce. | 716     | Tom-Tom Holder, chrome finish, mounted.                   |
| 1-pce. | 717     | Internal Cymbal Holder, chrome finish, mounted.           |
| 1-pr.  | 729     | Internal Spurs, with rubber tips, chrome finish, mounted. |
| 1-pce. | J-314   | Snare Drum (5"x13"), with 6-tensions.                     |
| 1-pce. | J-112   | Tom-Tom (7"x12").                                         |
| 1-pce. | 704     | Snare Stand, chrome finish.                               |
| 1-pce. | 708     | Drum Pedal.                                               |
| 1-pr.  | 722     | Shake-out Wire Brushes.                                   |
| 1-pr.  | 725     | Drum Sticks, oak made.                                    |
| 1-pce. | 312     | 12" Cymbal.                                               |



*Finish shown: Gold Oyster Pearl 22*

## SNARE DRUMS



*Finish shown:  
Marine Pearl 13*

**PRESIDENT SNARE DRUMS**  
**PEARL DRUM COMPANY** presents its sensational "President" Snare Drum, the newest and the most exciting quality snare drum made of plastic fiber for professional drummers of the world. Here are some supreme outstanding features.

**THE SHELL** "President" Snare Drum Shell is made of unique plastic fiber and its quality features are itemized as follows:-

- \* Outstanding Durability
- \* Non-Warping Perfect Circle
- \* Water Resistance
- \* More Sounds and More Power
- \* Smooth Finish
- \* Uniform Thickness
- \* Brilliant Tone

**THE LUGS (TENSION CASINGS)**

Attractive style lugs have been designed by our Pearl engineering staffs.

**THE STRAINER** "President" Snare Strainer was newly developed by our Pearl staffs. By means of a new horizontal switch that permits ultra-fine height adjustments, sound produced is crystal clear and the snare strainer elicits sound effects of the highest quality.

P-514 5½" x 14", 10-tensions.

P-414 5½" x 14", 8-tensions.



### NEW BUL-GEE SNARE DRUM(METAL)

- \* Unique design and style never developed in the past.
- \* No lugs are on the outside of shell, and switches and others are all inner-contained.
- \* The inner diameter of metal shell is larger than that of the plastic head. This enables the thinner shell act as effective as a thicker one.
- \* The edges of shell work like a cushion displaying a splendid rim shot effect.
- \* Sturdy chrome metal shell.

1614 5½" x 14", 8-tensions.



## SNARE DRUMS



- \* Highly Polished Deluxe Chrome Plated Hardware.
- \* Triple Flanged Rim-Shot Counter Hoops.
- \* Self-Aligning Separate Tension Lugs.
- \* Extra Sensitive Deluxe Snare Strainer and Tone Control equipped.

### METAL

- \* Sturdy Chrome Metal Shell with stripe.

4514 5½" x 14", 10-tensions.

4614 5½" x 14", 8-tensions.



*Finish shown: Sparkling Red Pearl 5*

### DELUXE AND STANDARD

- \* Non-Warping 9-plywood Hard Shell.

2414 5½" x 14", 10-tensions.

2314 5½" x 14", 8-tensions.



*Finish shown: Dark blue Pearl 6*

### POPULAR

- \* Non-Warping Plywood Hard Shell.

2214 5½" x 14", 6-tensions.

3214 4½" x 14", 6-tensions.

## COMBO DRUM KITS AND TIMBALES

### COMBO DRUM KIT

- \* Compact size and easy to carry.
- \* Non-Warping Hard Shell.

#### SD-14C

1-pce.	2214	Snare Drum (5½"×14"), with inner tone control. 6-tensions.
1-pce.	704	Snare Stand, chrome finish.
1-pce.	702	Cymbal Stand, chrome finish.
1-pce.	312	12" Cymbal.
1-pr.	722	Shake-out Wire Brushes.
1-pr.	725	Drum Sticks, oak made.
1-pce.	CC	Carrying Carton.

#### SD-14

1-pce.	2214	Snare Drum (5½"×14"), with inner tone control. 6-tensions.
1-pce.	704	Snare Stand, chrome finish.
1-pce.	310	10" Cymbal.
1-pce.	CH-1	Cymbal Holder, chrome finish.
1-pr.	722	Shake-out Wire Brushes.
1-pr.	725	Drum Sticks, oak made.
1-pce.	CC	Carrying Carton.



### PRESIDENT TIMBALES

- \* Non-Warping, Outstanding Durable Plastic Fiber Shells.
- \* Highly Polished Deluxe Chrome-Plated Hardware.
- \* Triple Flanged Rim-Shot Counter Hoops.
- \* Completely Height Adjustable Timbale Stand, Timbale Sticks and 4" Cow-Bell with Cow-Bell Holder equipped.

213 6½"×14" & 13" Complete Timbales Set.



## DRUM PEDALS



**S-108**  
Flat Screw



**B-150B**  
Pedal Beater



**S-160B**  
Leather Strap



**S-102**  
Wing Screw



**S-104**  
Wing Screw

### 710 DELUXE DRUM PEDAL

- \* Die-Casting made.
- \* A Smooth, Fast Action, Double Springs, Professional Ball-Bearing Pedal.
- \* Easily Adjustable to the slightest pressure requirements.
- \* Top-Quality Baked Lacquer Frame and Rubber-Plated Chrome Finish Footboard.
- \* High Quality Felt Beater Ball.
- \* Easy to set up and folds to compact.



**S-155B**  
Pedal Spring

### 709 STANDARD DRUM PEDAL

- \* Die-Casting made.
- \* A Smooth, Fast Action, Double Springs, Professional Ball-Bearing Pedal.
- \* Easily Adjustable to the slightest pressure requirements.
- \* Top-Quality Baked Lacquer Frame and Aluminum Footboard.
- \* High Quality Felt Beater Ball.
- \* Easy to set up and folds to compact.

### 708 POPULAR DRUM PEDAL

- \* Die-Casting made.
- \* A Smooth, Fast Action, Single Spring, High Quality Pedal.
- \* Easily Adjustable to the slightest pressure requirements.
- \* Top-Quality Baked Lacquer Frame and Nickel-Plated Footboard.
- \* Felt Beater Ball.
- \* Easy to set up and folds to compact.



**S-160A**  
Chain Strap



**B-150A**  
Pedal Beater



**S-155A**  
Pedal Spring



## DRUM PEDALS



**S-108**  
Flat Screw



**B-150B**  
Pedal Beater



**S-160B**  
Leather Strap



**S-102**  
Wing Screw



**S-104**  
Wing Screw

### 710 DELUXE DRUM PEDAL

- \* Die-Casting made.
- \* A Smooth, Fast Action, Double Springs, Professional Ball-Bearing Pedal.
- \* Easily Adjustable to the slightest pressure requirements.
- \* Top-Quality Baked Lacquer Frame and Rubber-Plated Chrome Finish Footboard.
- \* High Quality Felt Beater Ball.
- \* Easy to set up and folds to compact.



**S-155B**  
Pedal Spring

### 709 STANDARD DRUM PEDAL

- \* Die-Casting made.
- \* A Smooth, Fast Action, Double Springs, Professional Ball-Bearing Pedal.
- \* Easily Adjustable to the slightest pressure requirements.
- \* Top-Quality Baked Lacquer Frame and Aluminum Footboard.
- \* High Quality Felt Beater Ball.
- \* Easy to set up and folds to compact.

### 708 POPULAR DRUM PEDAL

- \* Die-Casting made.
- \* A Smooth, Fast Action, Single Spring, High Quality Pedal.
- \* Easily Adjustable to the slightest pressure requirements.
- \* Top-Quality Baked Lacquer Frame and Nickel-Plated Footboard.
- \* Felt Beater Ball.
- \* Easy to set up and folds to compact.



**S-160 A**  
Chain Strap



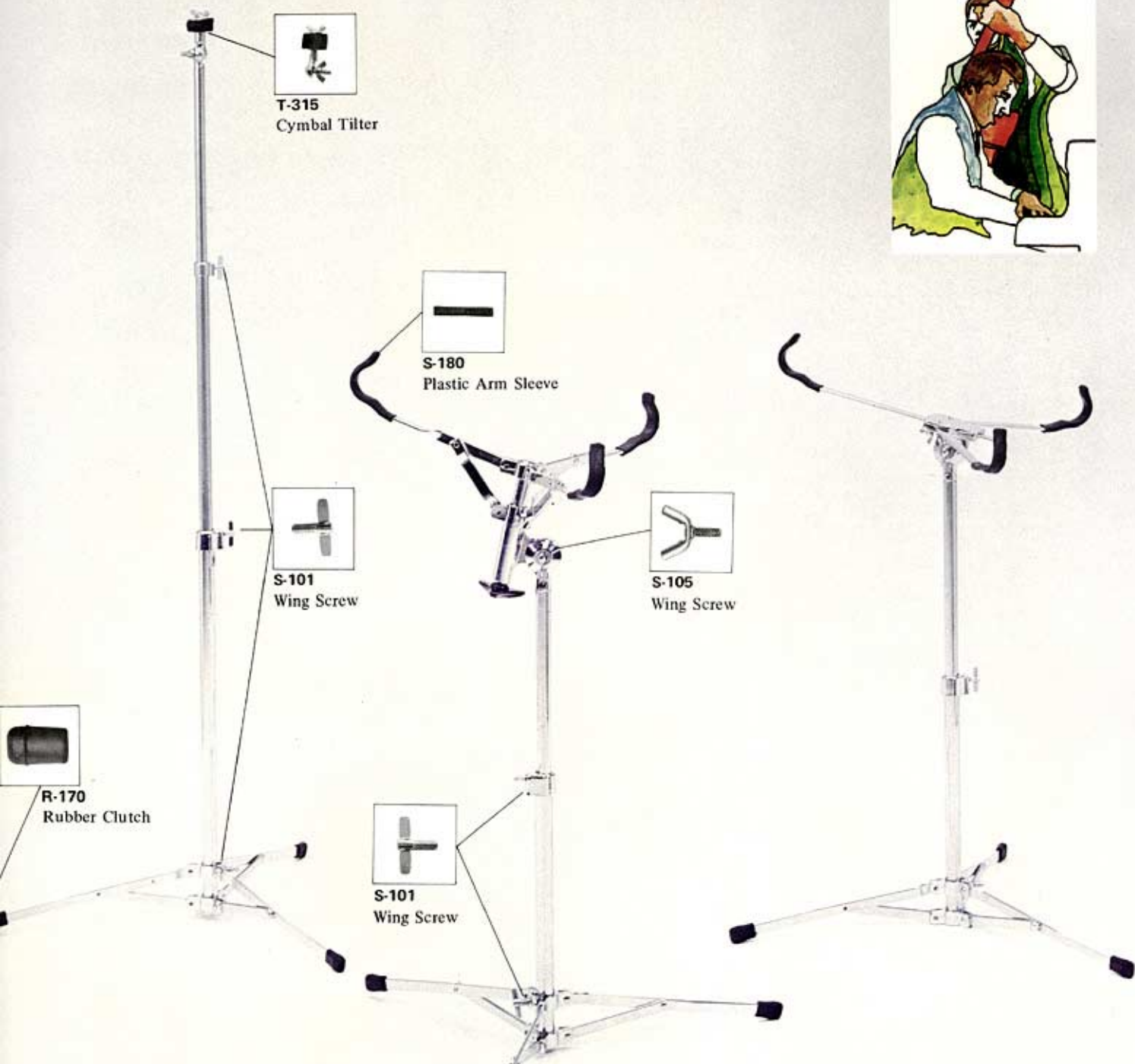
**B-150A**  
Pedal Beater



**S-155A**  
Pedal Spring



## CYMBAL STANDS AND SNARE STANDS



### 703 DELUXE CYMBAL STAND 702 STANDARD CYMBAL STAND

- \* Completely Height Adjustable.
- \* 3-sectioned New Flat Base Deluxe Cymbal Stand.
- \* Highly Polished Deluxe Chrome Finish.
- \* Top-Quality All-Directional Cymbal Tilter equipped.
- \* Easy to set up and folds to compact.

### 706 SUPER-GRIP SNARE STAND

- \* Heavy-Duty, Top-Professional Snare Stand locks Snare Drum and Snare Stand together as a solid unit.
- \* Highly Polished Deluxe Chrome Finish.
- \* All-Directional and Completely Height Adjustable Snare Stand which provides a stable base.
- \* Easy to set up and folds to compact.

### 705 DELUXE SNARE STAND 704 STANDARD SNARE STAND

- \* The 1st Quality Strong Holding Snare Stand which holds Snare Drum firmly at any angle and height.
- \* Highly Polished Deluxe Chrome Finish.
- \* Easy to set up and folds to compact.

# DRUMMER'S THRONE, COW-BELLS, BELL-BLOCK COMBINATION SET, WOOD-BLOCK AND BASS DRUM ANCHOR



750 DELUXE DRUMMER'S THRONE

- \* Offset Angle Tripod Drummer's Throne in modern design.
- \* Highly Polished Deluxe Chrome Finish.
- \* Positive height lock and stable base.
- \* Correct Stress Distribution through balanced tripod.
- \* Padded Seat with Sponge Rubber, covered with Naugahyde.



R-173  
Rubber Clutch



R-172  
Rubber Clutch



COW-BELLS with Holder  
Chrome Finish.

- 726-L 6" . . . . .
- 726-M 5" . . . . .
- 726-S 4" . . . . .

736 BELL-BLOCK COMBINATION SET consisting of:  
5" Cow-Bell, Chrome Finish.  
Wood-Block, Dark Brown  
Lacquer Finish.  
Combination Holder.

712 WOOD-BLOCK with Holder  
7" x 2½" x 1½", Dark Brown  
Lacquer Finish.

721 BASS DRUM ANCHOR  
Chrome Finish.



# CYMBALS

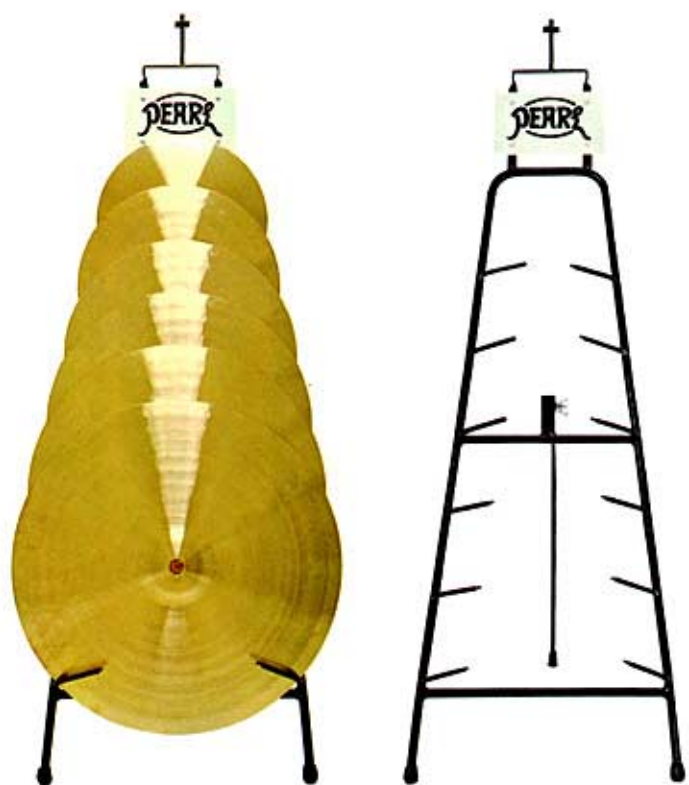


## CYMBALS AND CYMBAL DISPLAY STAND

### CYMBALS

310	10"	.....
312	12"	.....
314	14"	.....
316	16"	.....
318	18"	.....
320	20"	.....
322	22"	.....
324	24"	.....

CYMBAL DISPLAY STAND .....



# PLASTIC HEADS, WIRE BRUSHES AND DRUM STICKS



## PLASTIC DRUM HEADS (U.S.A. Patented)

* Batter	
B-12	12"
B-13	13"
B-14	14"
B-16	16"
B-18	18"
B-20	20"
B-22	22"
* Snare	
S-13	13"
S-14	14"



## WIRE BRUSHES

722	Shake-out
722-B	Loopend



725    1A    2A    3A    5A    7A    9A    2B    5B    1S    2S    3S    PA    PB    PC

## DRUM STICKS (oak made)

725	15 1/4" long	3A	15 1/4" long	9A	15 1/4" long	1S	16 3/4" long	PA	15 3/4" long
1A	16 3/4" long	5A	16 3/4" long	2B	15 7/8" long	2S	16 3/4" long	PB	15 1/2" long
2A	15 3/4" long	7A	15 3/4" long	5B	15 3/8" long	3S	16 3/4" long	PC	15 3/4" long

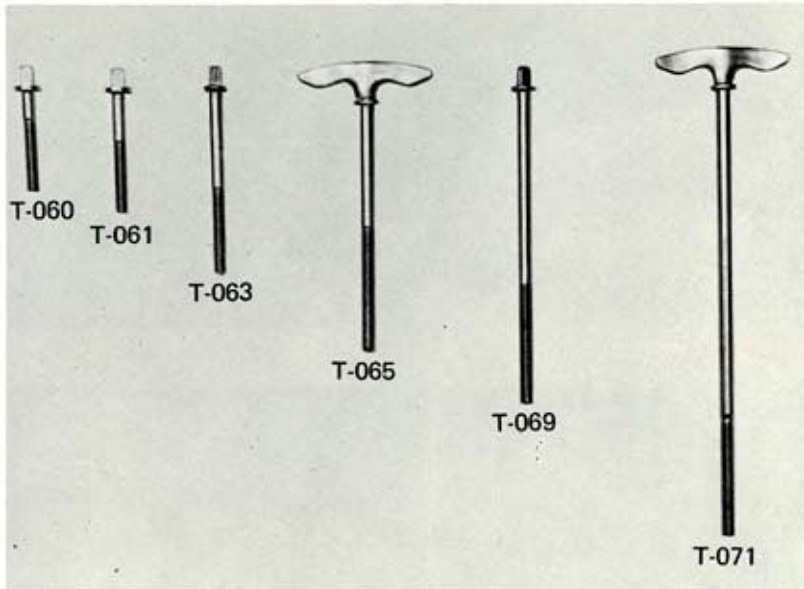
\* Remarks: Nylon-Tip Sticks available for above models.



# PARTS

TENSION RODS (List of Model number and Quantity which is using of "Pearl" standard drum outfit.)

Model of Drum Outfit	Bass Drum		Snare Drum		Floor Tom-Tom		Tom-Tom	
	T-065	T-071	T-061	T-060	T-061	T-069	T-061	T-063
<i>President</i>	20-pcs.		20-pcs.		16-pcs.		12-pcs.	
<i>Dyna-Max</i>	20-pcs.		20-pcs.		16-pcs.		12-pcs.	
<i>Big-Shot</i>	16-pcs. x2		20-pcs.		16-pcs.		12-pcs. x2	
<i>Thunder-King</i>	16-pcs.		16-pcs.		16-pcs.		12-pcs. x2	
<i>Frontier</i>	16-pcs.		16-pcs.		16-pcs.		12-pcs.	
<i>Planet</i>	16-pcs.		16-pcs.		16-pcs.		12-pcs.	
<i>Challenger</i>	12-pcs.		12-pcs.		12-pcs.		12-pcs.	
<i>Valencia</i>		12-pcs.	12-pcs.			12-pcs.		12-pcs.
<i>Junior</i>		12-pcs.		12-pcs.				12-pcs.



T-060 . . . . . 1  $\frac{3}{8}$ " long  
 T-061 . . . . . 1  $\frac{5}{8}$ " long  
 T-063 . . . . . 2  $\frac{3}{16}$ " long  
 T-065 . . . . . 5  $\frac{1}{8}$ " long  
 T-069 . . . . . 5  $\frac{15}{16}$ " long  
 T-071 . . . . . 7  $\frac{3}{8}$ " long

## NUT AND SCREWS

### Nut

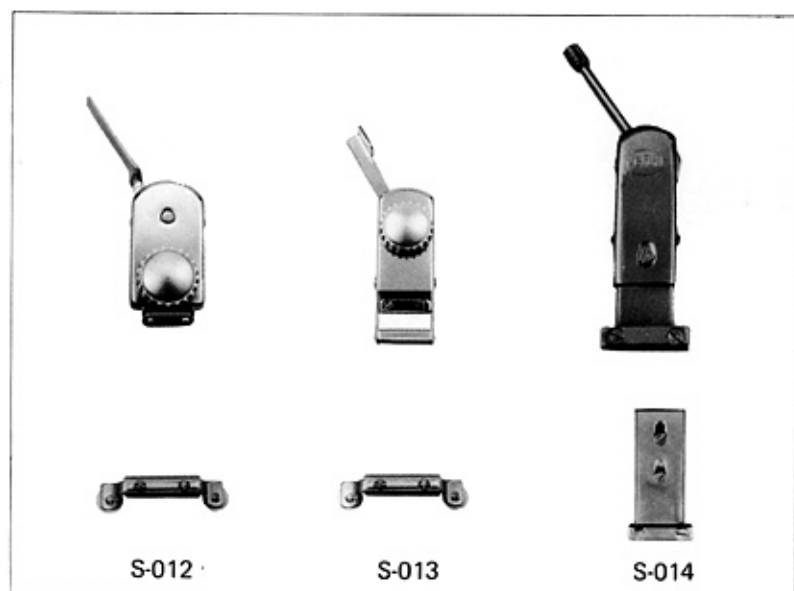
N-091  $\frac{1}{4}$ " . . . . . Wing-Nut, for clamping Cymbal Tilter.

### Screws

S-101  $\frac{1}{4}$ " . . . . . Wing-Screw, for clamping Spur/Cymbal Holder to Bass Drum, and for stand height adjustment.  
 S-102  $\frac{1}{4}$ " . . . . . Wing-Screw, for clamping Drum Pedal Beater.  
 S-103  $\frac{3}{16}$ " . . . . . Wing-Screw, for clamping Floor Tom-Tom Leg.  
 S-104  $\frac{3}{16}$ " . . . . . Wing-Screw, for attaching Drum Pedal to Bass Drum Hoop.  
 S-105  $\frac{3}{16}$ " . . . . . Wing-Screw, for clamping gear of Stand 705 & 706.  
 S-106  $\frac{3}{16}$ " . . . . . Square-head-Screw, for clamping Tom-Holder or Cymbal-Holder.  
 S-107  $\frac{3}{16}$ " . . . . . Square-head-Screw, for top of "Free Adjustable" Tom-Holder.  
 S-108  $\frac{3}{16}$ " . . . . . Flat-head-Screw, for clamping Footboard to Drum Pedal base.



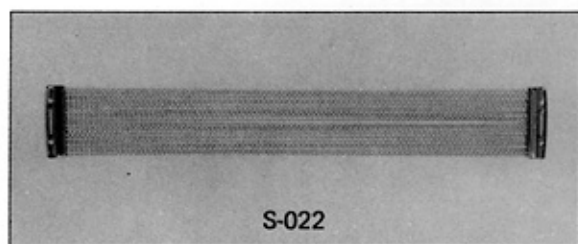
# PARTS



S-012

S-013

S-014



S-022

## SNAPPY WIRE SNARE

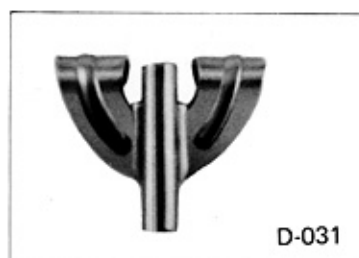
S-022 14", 20-strand.

## SNARE STRAINERS

S-012 for Snare Drums 2214 and 3214

S-013 for Snare Drums 4514, 4614, 2414, 2314

S-014 for Snare Drums P-514 and P-414



D-031

## HOOK (chrome finish)

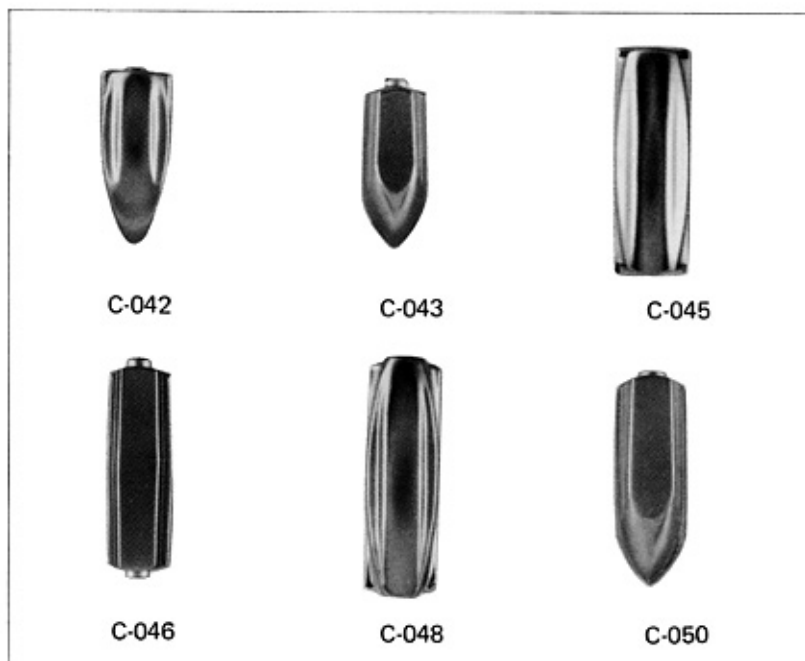
D-031 For Bass Drum . . . . .



K-026

## TENSION KEY

K-026 . . . . .



C-042

C-043

C-045

C-046

C-048

C-050

## TENSION CASINGS (chrome finish)

C-042 for Double-lug Tom-Tom and Floor Tom-Tom.

C-043 for Double-lug Tom-Tom and Floor Tom-Tom (side-cut type).

C-045 for Single-lug Tom-Tom, Floor Tom-Tom and Snare Drum.

C-046 for Snare Drum (side-cut type).

C-048 for Single-lug Bass Drum.

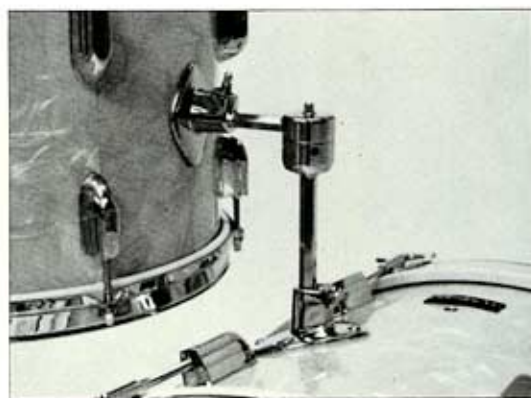
C-050 for Double-lug Bass Drum (side-cut type).



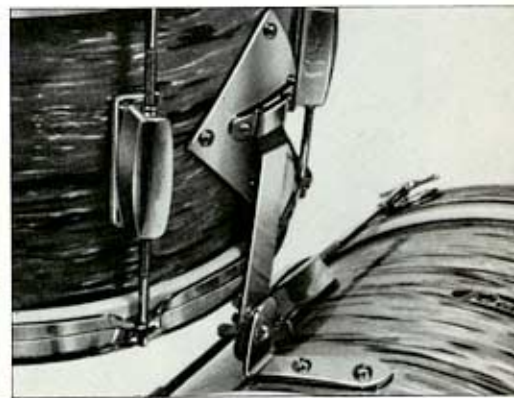
# ACCESSORIES FOR BASS DRUM AND FLOOR TOM-TOM



"Free Adjustable"  
Twin Tom-Tom Holder



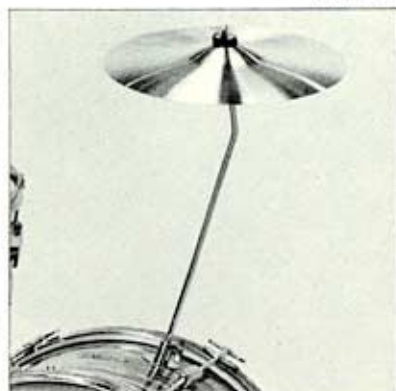
"Free Adjustable"  
Tom-Tom Holder



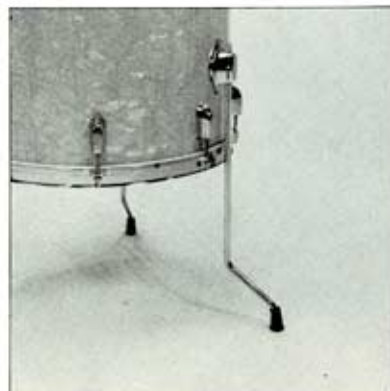
Tom-Tom Holder  
for Junior Set



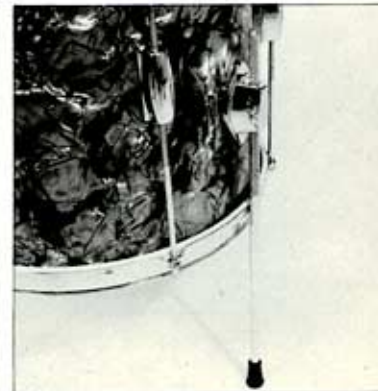
"Height Adjustable"  
Cymbal Holder



Cymbal Holder for  
Junior Set



Bent Shaped Legs  
with clamp for  
Tom-Tom



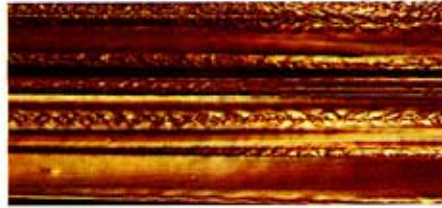
Straight Type Legs  
with clamp for Floor  
Tom-Tom



## COLOR FINISHES



1. WHITE PEARL



7. TIGER'S EYE PEARL



23. RED OYSTER PEARL



2. BLACK PEARL



10. SPARKLING GOLD PEARL



24. OYSTER PEARL



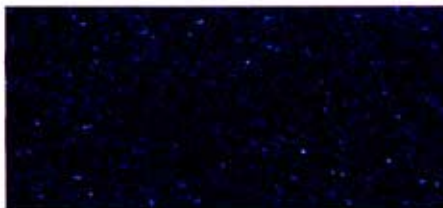
3. SPARKLING SILVER PEARL



12. BLUE PEARL



27. GOLD GRAIN PEARL



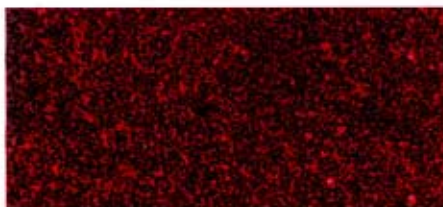
4. SPARKLING BLUE PEARL



13. MARINE PEARL



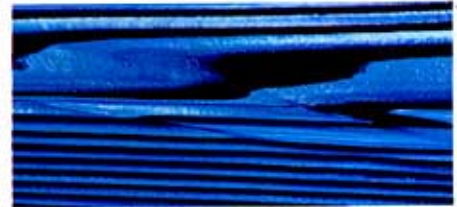
28. RED GRAIN PEARL



5. SPARKLING RED PEARL



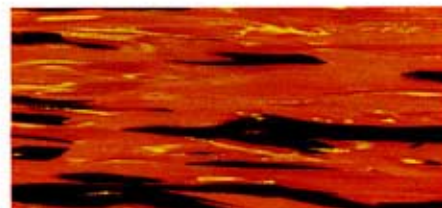
21. BLUE OYSTER PEARL



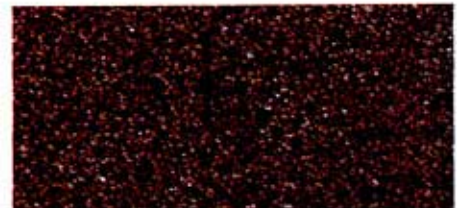
29. BLUE GRAIN PEARL



6. DARK BLUE PEARL



22. GOLD OYSTER PEARL



30. SPARKLING BLACK PEARL





PEARL

... in conclusion of the introduction of our Pearl "Jazz Drums", we are very happy to make an announcement that we are leading manufacturers of all kinds of percussion instruments in superior quality, from highest quality to popular class for school use, such as drums and tympanies for Orchestra, Marching drums, our Pearl unique parts and drum accessories.



**PEARL DRUM CO., LTD.** No. 6, 4-16, Narihira, Sumidaku, Tokyo, Japan.