



Pearl  
PEARL WORLD SERIES  
100279

**PEARL DRUMS**  
WORLD AND EXPORT SERIES

Pearl®



WLX-22D-70 Illustrated in No.107 Coral Red Cymbals not included

## PRESTIGE WORLD 6500

Pearl's new Prestige World Series (WLX) offers you a gleaming "Piano" Finish for the ultimate in cosmetic beauty...PLUS, the sturdiness and durability of our "800W" Series hardware. "DEEP-FORCE" cross laminated shells of selected Birch, Super Lamin and Mahogany woods provide today's true professional sound and are available in "Piano" Black, Antique Ivory and Coral Red finishes. Pearl's unique and new strainer on our 10 Lug Metal Snare Drum (WX-614D). Professional Spurs



WLX-22D-50 Illustrated in No.106 Antique Ivory Cymbals not included

|                   | PRESTIGE WORLD "DEEP-FORCE" SERIES |            |            |            |
|-------------------|------------------------------------|------------|------------|------------|
|                   | WLX-22D-50                         | WLX-22D-60 | WLX-22D-70 | WLX-22D-90 |
| Bass Drum         | 16" x 22" WLX-222D                 | •          | •          | ••         |
| Tom Tom           | 8" x 10" WLX-210D                  | •          | •          | •          |
|                   | 10" x 12" WLX-212D                 | •          | •          | •          |
|                   | 11" x 13" WLX-213D                 | •          | •          | •          |
|                   | 12" x 14" WLX-214D                 | •          | •          | •          |
| Floor Tom         | 16" x 16" WLX-2116                 | •          | •          | •          |
|                   | 16" x 18" WLX-2118                 | •          | •          | •          |
| Snare Drum        | 6½" x 14" WX-614D                  | •          | •          | •          |
| Hi-Hat Stand      | H-800W                             | •          | •          | •          |
| Snare Drum Stand  | S-800W                             | •          | •          | •          |
| Cymbal Stand      | C-800W                             | •          | •          | •          |
| Cymbal Boom Stand | B-800W                             | •          | •          | •••        |
| Foot Pedal        | P-800                              | •          | •          | •••        |
| Tom Holder        | TH-80                              | ••         | ••         | ••••       |
|                   | TH-80S                             | •          | •          | ••         |
| Adaptor           | AX-30                              | •          | •          | ••         |

# WORLD



WX-22DW-90 Illustrated in No.21 Smoky Chrome Cymbals not included

(730P). "Independent Suspension System" Tom Holders (TH-80) and our smooth "Wheel Drive Action" Bass Drum Pedal (P-800) all combine to put the new Prestige World Series in a class by itself.

Our covered shell World Series (WX) has all the features of the Prestige World and features today's most popular and durable covering materials...Jet Black, Pure White, Wine Red and our new Smoky Chrome.

# WORLD 6500

|         | WORLD "DEEP-FORCE" SERIES |           |           |            |
|---------|---------------------------|-----------|-----------|------------|
|         | WX-22D-50                 | WX-22D-60 | WX-22D-70 | WX-22DW-90 |
| WX-222D | •                         | •         | •         | ••         |
| WX-210D | •                         | •         | •         | •          |
| WX-212D | •                         | •         | •         | •          |
| WX-213D | •                         | •         | •         | •          |
| WX-214D | •                         | •         | •         | •          |
| WX-2116 | •                         | •         | •         | •          |
| WX-2118 | •                         | •         | •         | •          |
| WX-614D | •                         | •         | •         | •          |
| H-800W  | •                         | •         | •         | •          |
| S-800W  | •                         | •         | •         | •          |
| C-800W  | •                         | •         | •         | •          |
| B-800W  | •                         | •         | •         | •••        |
| P-800   | •                         | •         | •         | ••••       |
| TH-80   | ••                        | ••        | ••        | ••••       |
| TH-80S  | ••                        | ••        | ••        | ••••       |
| AX-30   | •                         | •         | •         | •          |

Cymbals not included

# SERIES



WX-22D-50 Illustrated in No.31 Jet Black Cymbals not included



EX-22DW-9 Illustrated in No.31 Jet Black Cymbals not included

## EXPORT "DEEP-FORCE" 5500

With today's highest feature-to-value ratio, Pearl's Export Series has been consistently rated No.1 around the world! Pearl's EX-5500 Export "DEEP-FORCE" Series Drums feature the deeper shells now so popular on the contemporary drum scene. Export Shells are made from 9-ply of selected grain woods. (EX 8" x 8" and 8" x 10" Power Toms are 6-ply of selected grain woods.) Pearl's new "Acousti-Coat Sealer" inside the shell helps project the sound while keeping the shell free of effects from moisture.



EX-22D-5 Illustrated in No.21 Smoky Chrome Cymbals not included

|                   |              | EXPORT "DEEP-FORCE" SERIES |          |          |           |
|-------------------|--------------|----------------------------|----------|----------|-----------|
|                   |              | EX-22D-5                   | EX-22D-6 | EX-22D-7 | EX-22DW-9 |
| Bass Drum         | 16" x 22"    | EX-222D                    | •        | •        | •         |
|                   | 8" x 10"     | EX-210D                    | •        | •        | •         |
|                   | 10" x 12"    | EX-212D                    | •        | •        | •         |
| Tom Tom           | 11" x 13"    | EX-213D                    | •        | •        | •         |
|                   | 12" x 14"    | EX-214D                    | •        | •        | •         |
|                   | 16" x 16"    | EX-2116                    | •        | •        | •         |
| Floor Tom         | 16" x 18"    | EX-2118                    | •        | •        | •         |
|                   | 16" x 22"    | EX-222D                    | •        | •        | •         |
| Snare Drum        | 6 1/2" x 14" | EX-614D                    | •        | •        | •         |
| Hi-Hat Stand      | H-800        | •                          | •        | •        | •         |
| Snare Drum Stand  | S-800        | •                          | •        | •        | •         |
| Cymbal Stand      | C-800        | •                          | •        | •        | •         |
| Cymbal Boom Stand | B-800        | •                          | •        | •        | •         |
| Foot Pedal        | P-750        | •                          | •        | •        | •         |
| Tom Holder        | TH-80        | •                          | •        | •        | •         |
|                   | TH-80S       | •                          | •        | •        | •         |
| Adapter           | AX-30        | •                          | •        | •        | •         |
| Drum Sticks       | 925          | •                          | •        | •        | •         |

# EXPORT



EX-22-7 Illustrated in No.33 Pure White Cymbals not included

Pearl's EX-5300 "Standard" Export Series demonstrates every sophistication of Pearl's quality and innovation, yet is sensitively priced to stay within reach of all players. Among the many Export Series features are:

- TH-80 "Independent Suspension System" Tom Holder
- EX-614D (6½"x14") Metal Snare Drum
- 730M Convertible Rubber/Spike Tip Bass Drum Spurs
- All 800 Series Hardware

## EXPORT 5300



EX-22-5 Illustrated in No.66 Wine Red Cymbals not included

|           |         | EXPORT SERIES |         |         |
|-----------|---------|---------------|---------|---------|
|           |         | EX-22-5       | EX-22-6 | EX-22-7 |
| 14" x 22" | EX-222  | •             | •       | •       |
| 8" x 10"  | EX-210D | •             | •       | •       |
| 8" x 12"  | EX-212  | •             | •       | •       |
| 9" x 13"  | EX-213  | •             | •       | •       |
| 10" x 14" | EX-214  | •             | •       | •       |
| 16" x 16" | EX-2116 | •             | •       | •       |
| 6½" x 14" | EX-614  | •             | •       | •       |
|           | H-800   | •             | •       | •       |
|           | S-800   | •             | •       | •       |
|           | C-800   | •             | •       | •       |
|           | B-800   | •             | •       | •       |
|           | P-750   | •             | •       | •       |
|           | TH-80   | •             | •       | •       |
|           | TH-80S  | •             | •       | •       |
|           | AX-30   | •             | •       | •       |
|           | 925     | •             | •       | •       |

# SERIES

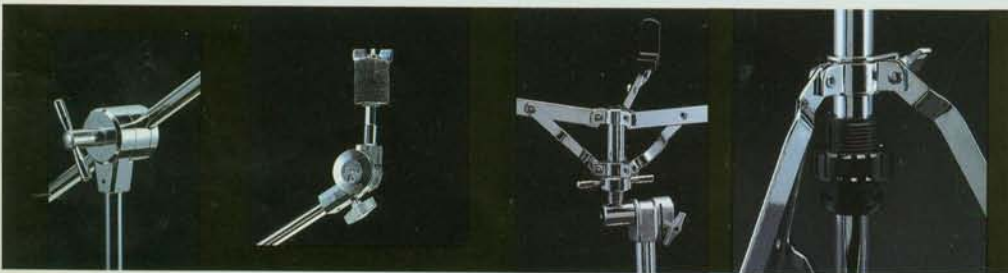


B-800W

C-800W

S-800W

H-800W



B-800

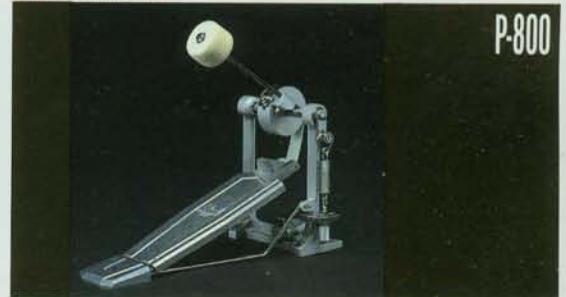
C-800

S-800

H-800

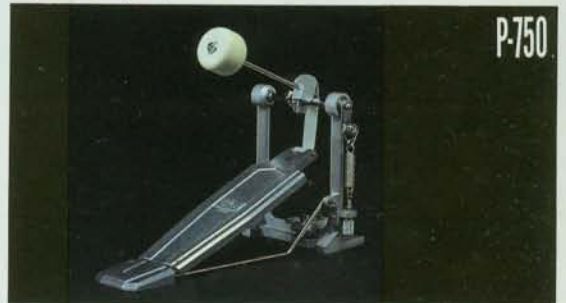
WORLD and EXPORT Series Drums are supported by Pearl's extremely versatile and durable professional hardware, proven over the years able to take the heaviest playing...night after night. Pearl's exclusive Nylon Bushing System (Patented) is equipped in every pipe joint section of each stand for no-mar no-slip performance. Cymbal and Boom Stands have the "Uni-Lock" System Cymbal Tilter (Pat. Pend.), adjustable to the most sensitive angle. Pearl's H-800W and H-800 Hi-Hat Stands are equipped with the "Direct-Pull" spring mechanism eliminating any loss of power. The heavy-duty double-braced leg "800W" Series is used for WORLD and single-braced "800" Series for EXPORT.

## FOOT PEDALS



P-800

P-800 is designed for speed with the "Wheel Drive Action" mechanism that quickly responds to even the lightest touch. Both spring tension and beater angle are independently adjustable.



P-750

With the newly designed footboard and by adapting the mechanism of the P-800's "Wheel Drive Action" system, the new P-750 Pedal provides smooth, quiet, fast action and boasts extreme durability.

## DRUMMER'S THRONE



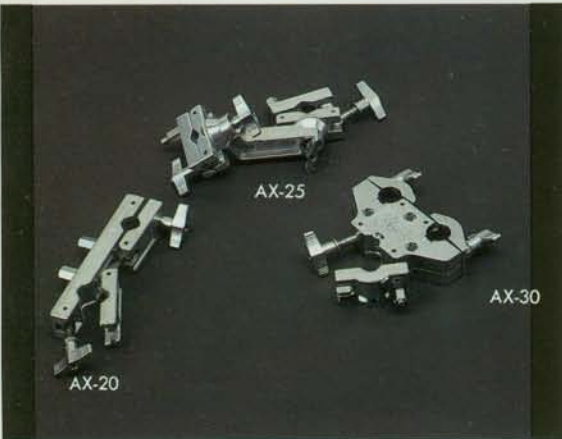
D-750

D-700

D-750 is a new heavy-duty model with smooth and fast height adjustment while the D-700 is light, compact and sturdy.

# HARDWARE AND

## ADAPTORS



### AX-20

This two-holed, compact, aluminum die-cast adaptor, being slightly enlarged for ease in set-up, firmly grips tubing from  $\frac{5}{8}$  to  $1\frac{1}{8}$  inch in diameter.

### AX-25

An expanded version of the AX-20. The two gear system clamp sections revolve  $360^\circ$ , enabling you to set any holder at whatever angle you wish.

### AX-30

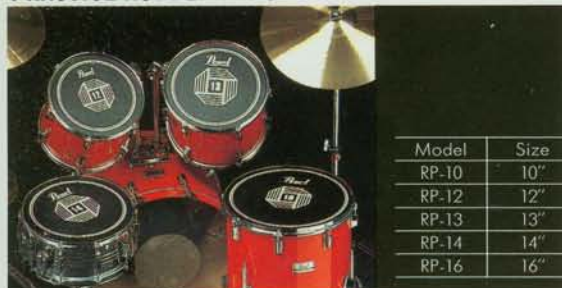
Having heavy-duty design, two of the three-holes accept Pearl's  $\frac{7}{8}$  inch pipe diameters and the third hole will accept pipe diameters of  $\frac{5}{8}$  inch to  $1\frac{1}{8}$  inch, providing greater flexibility in accessory choices.

## HI-HAT ATTACHMENT

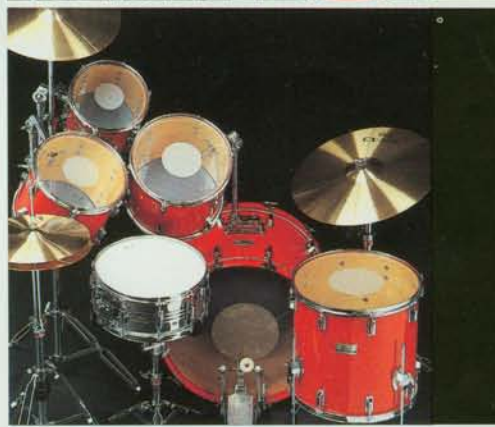


A heavier duty version of the AX-20 adaptor, the HA-90 can be used with all the models of Pearl hi-hat stands.

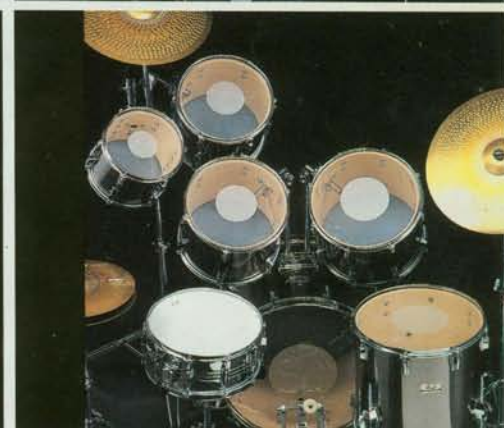
## PRACTICE RUBBER PADS



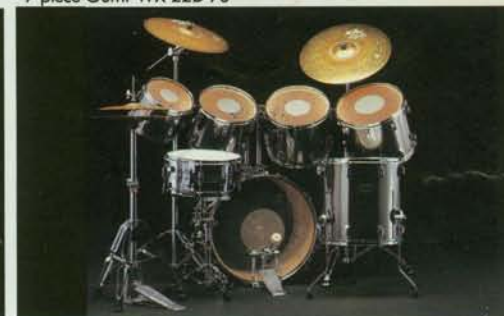
Pearl's specially processed rubber pads provide a natural stick rebound. They are also an excellent mute control, giving you the opportunity to practice on your kit whenever and wherever you wish.



6-piece Outfit WLX-22D-60



7-piece Outfit WX-22D-70



**CUSTOMIZE YOUR OUTFIT  
TO YOUR  
SPECIFIC NEEDS**

Pearl's AX-30 Adaptor is the key to multiple set-up configurations. The 6 and 7 piece World/Export Series illustrations show only a few of the many set-ups made possible through its use. Select and build the set you want without any additional cost. Your imagination is your only limit to creating the set of your dreams.

# ACCESSORIES



**CX-500**

Recommended for use with the World/Export series, Pearl CX-500 Cymbals produce a variety of brilliant tonal colors with all the cut-through power needed for today's music. Special effect cymbals including China Type round out the basic Ride, Medium, Crash and Hi-Hat types.

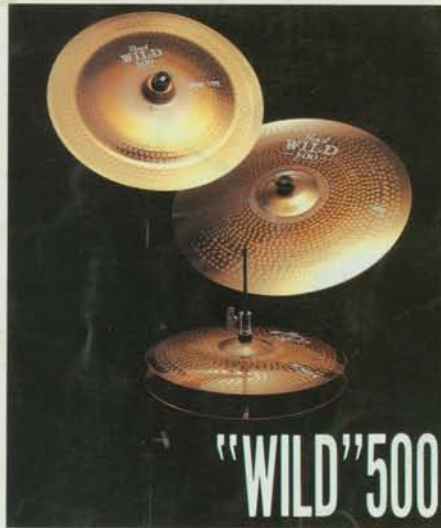
| Model | Size       | Weight & Types         |
|-------|------------|------------------------|
| 522   | 22" = 56cm | Ride, Medium           |
| 520   | 20" = 51cm | Ride, Medium           |
| 518   | 18" = 46cm | Ride, Medium, Crash    |
| 516   | 16" = 41cm | Medium, Crash          |
| 514HT | 14" = 35cm | Hi-Hat Top (Crash)     |
| 514HB | 14" = 35cm | Hi-Hat Bottom (Medium) |
| 520CT | 20" = 51cm | China Type             |
| 518CT | 18" = 46cm | China Type             |
| 511SP | 11" = 28cm | Splash                 |
| 508B  | 8" = 20cm  | Bell                   |
| 507C  | 7" = 18cm  | Cupchime               |
| 506C  | 6" = 15cm  | Cupchime               |
| 505C  | 5" = 13cm  | Cupchime               |

Note: Please add letter R=Ride, M=Medium, or C=Crash after the model number for your preference.

# CYMBALS

Designed for those young rock drummers who want that powerful "cutting" sound at a truly affordable price. Pearl's new "Wild" 500 Series Cymbals are available in Ride, Crash, Hi-Hat and China Type.

| Model  | Size       | Weight & Types         |
|--------|------------|------------------------|
| 522W   | 22" = 56cm | Ride                   |
| 520W   | 20" = 51cm | Ride                   |
| 518W   | 18" = 46cm | Crash                  |
| 516W   | 16" = 41cm | Crash                  |
| 514WHT | 14" = 35cm | Hi-Hat Top. (Crash)    |
| 514WHB | 14" = 35cm | Hi-Hat Bottom (Medium) |
| 520WCT | 20" = 51cm | China Type             |
| 518WCT | 18" = 46cm | China Type             |



**"WILD" 500**

**Carmine Appice**  
King Kobra



**Ian Paice**  
Deep Purple



**Jeff Porcaro**  
TOTO



**Chester Thompson**  
Genesis/Phil Collins



**Kelly Keagy**  
Night Ranger



**Trevor Murrell**  
Wham!



**Tico Torres**  
Bon Jovi



**Steve White**  
The Style Council



Pearl Dealer

**Pearl®**

Specifications are subject to change without notice.  
Dec. 1985 W601215 Printed in Japan