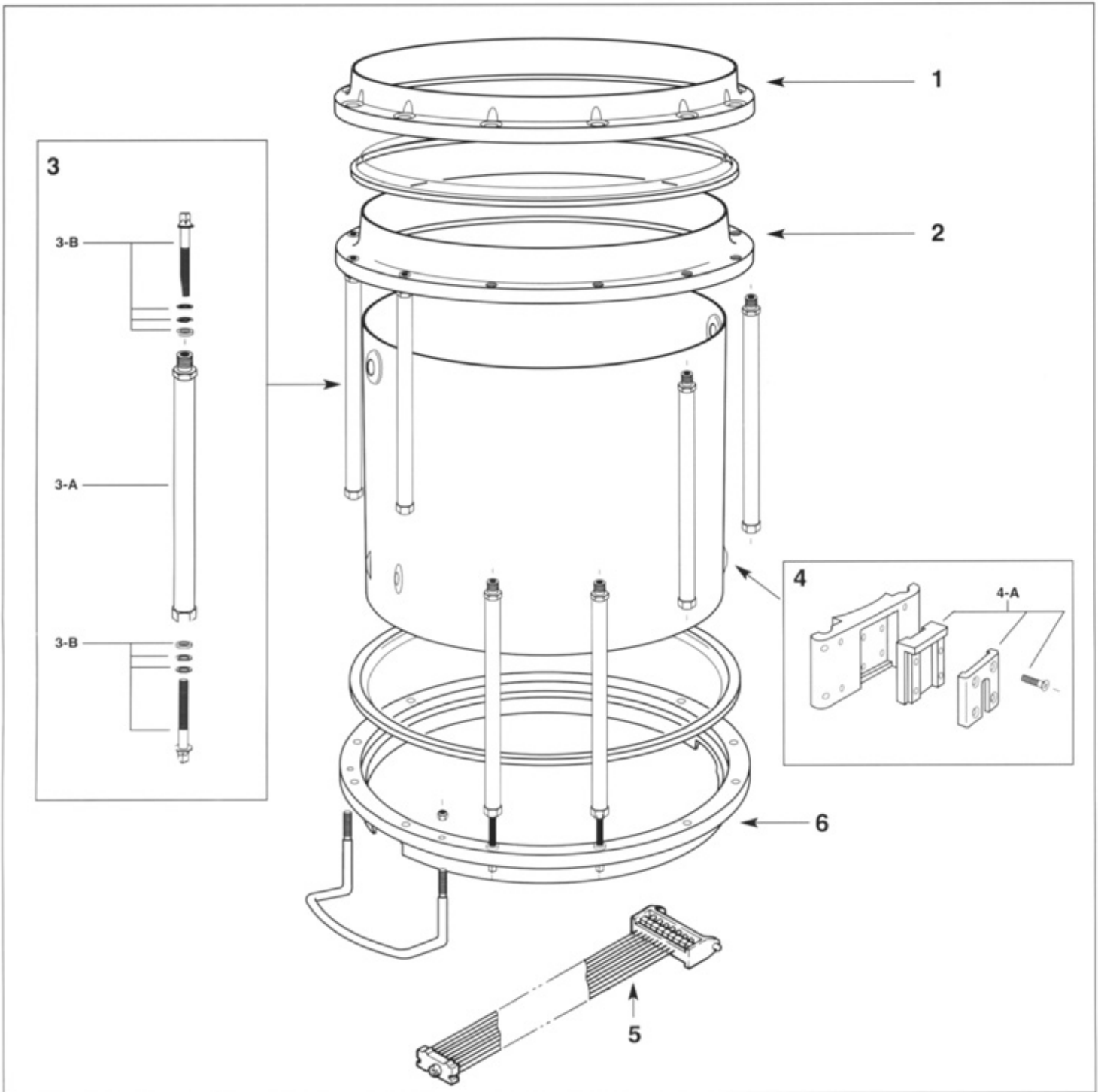


Pearl Marching Percussion Parts List



CHAMPIONSHIP SERIES
Snare Drums

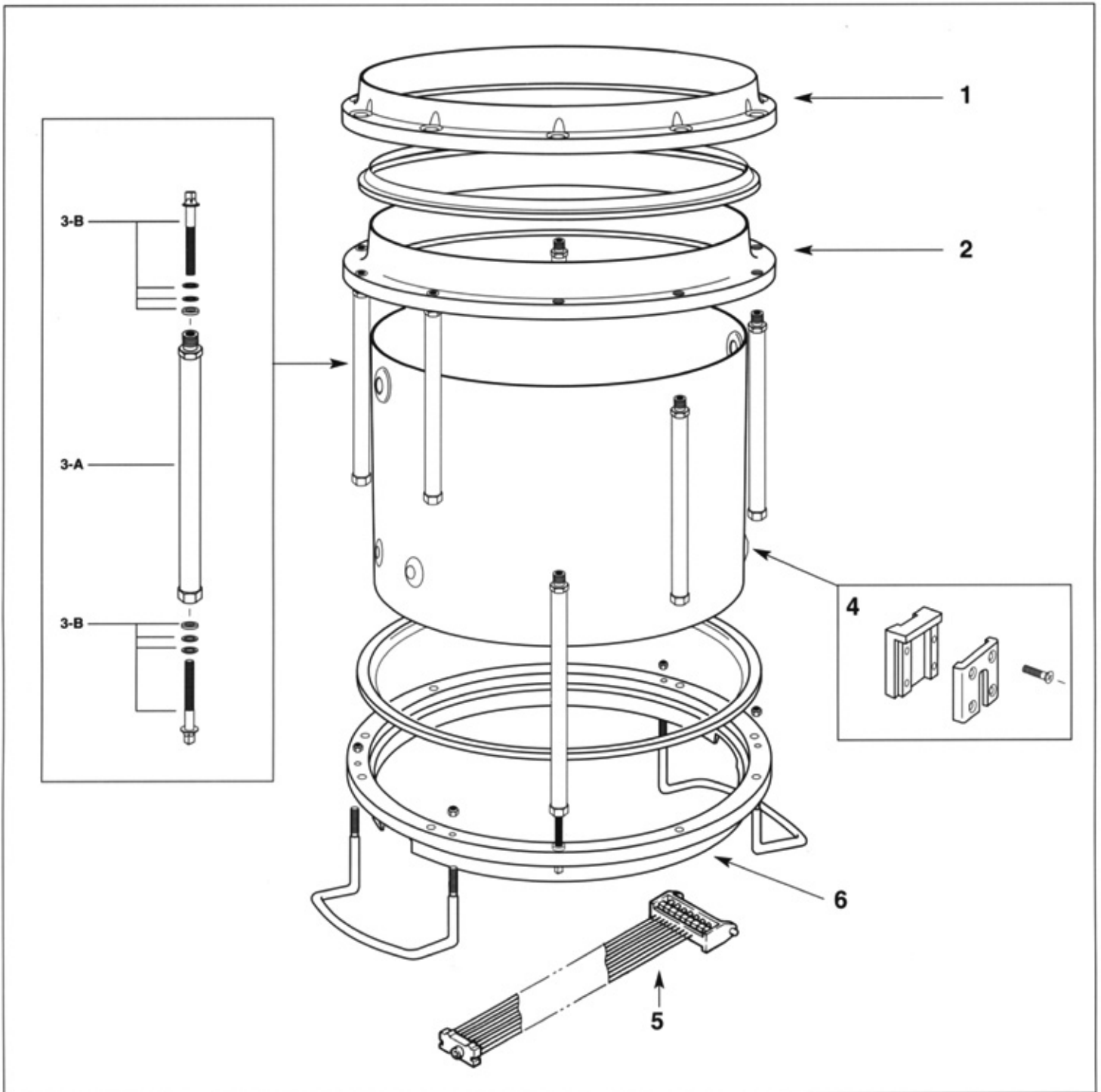


FFX-105 Championship Series Snare Drum

- | | | |
|-----|---------|---|
| 1 | DA-14T | Aluminum Die Cast Hoop (batter side) |
| 2 | ER-14 | Edge Ring |
| 3 | | Tension Post Assembly |
| 3-A | TSP-102 | Tension Post |
| 3-B | T-054 | Tension Key Rod w/washers (6mm) |
| 4 | FFXCB-1 | Clip Bracket Assembly |
| 4-A | CT1216 | Clip Bracket |
| 5 | GS-114A | *Synthetic Gut Snare Assembly |
| 6 | DA14B | Aluminum Die Cast Hoop (snare side) w/ Snare Guards |

*Strainer Assembly p.4

Snare Drums



FFX-103 Championship Series Snare Drum

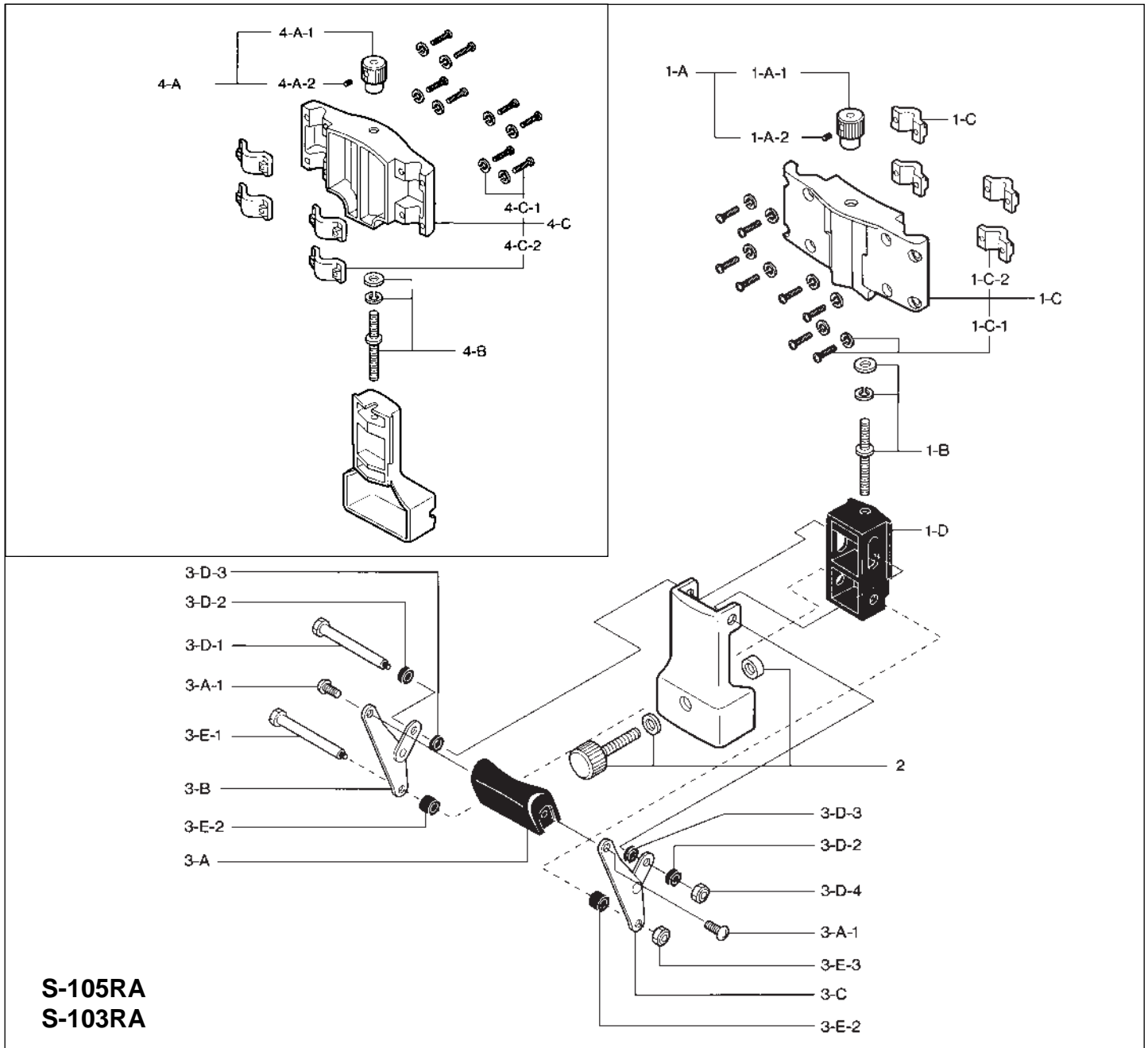
- | | | |
|-----|---------|---|
| 1 | DA-13T | Aluminum Die Cast Hoop (batter side) |
| 2 | ER-13 | Edge Ring |
| 3 | | Tension Post Assembly |
| 3-A | TSP-103 | Tension Post |
| 3-B | T-054 | Tension Key Rod w/washers (6mm) |
| 4 | CT1216 | Clip Bracket |
| 5 | GS-113A | *Synthetic Gut Snare Assembly |
| 6 | DA13B | Aluminum Die Cast Hoop (snare side) w/ Snare Guards |

*Strainer Assembly p.4

S-105/S-103

Lightning Strainer

(for FFX105&FFX103)



S-105RA
S-103RA

S-105RA Release Side Assy.

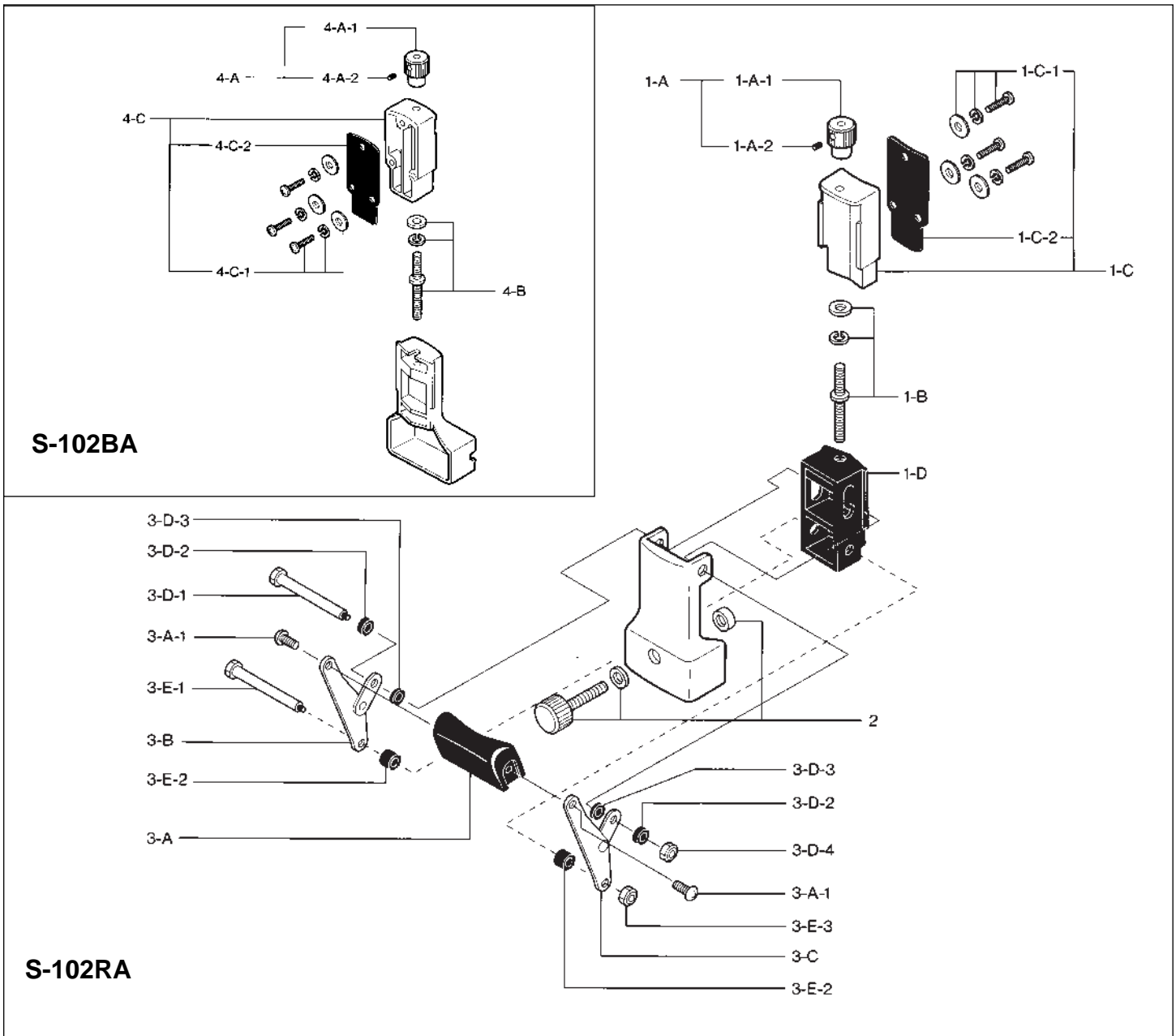
1-A	M-5KA	Adjustment Knob Assy.
1-A-1	M-5K	Adjustment Knob
1-A-2	SB-44	Allen Screw
1-B	BAB-663W	Adjustment Bolt w/Washers
1-C	MBR-105	Mounting Bracket, Complete 14"
	MBR-103	Mounting Bracket, Complete 13"
1-C-1	SN-415W	Boltw/Washer
1-C-2	DC-329	Die-Cast link
1-D	SLB-102	Slider Body
2	ME-632WG	Tension Adjustment Bolt w/Washer & Rod Guard
3-A	SL-102	Strainer Lever
3-A-1	SC-510	Screw (M5x10mm)
3-B	SLP-102L	Strainer Action Linkage Plate (Left)
3-C	SLP-102R	Strainer Action Linkage Plate (Right)
3-D-1	ME-266	Rod only

3-D-2	SPC-04	Plastic Collar
3-D-3	SPC-02	Plastic Collar
3-D-4	HEX-5N	Hexagonal Nut (M5)
3-E-1	ME-266	Rod only
3-E-2	SPC-10	Plastic Collar
3-E-3	HEX-5N	Hexagonal Nut (M5)

S-105BA Butt Side Assy.

4-A-1	M-5K	Adjustment Knob
4-A-2	SB-44	Allen Screw
4-B	BAB-663W	Adjustment Bolt w/Washers
4-C	MBR-105	Mounting Bracket, Complete 14"
	MBR-103	Mounting Bracket, Complete 13"
4-C-1	SN-415W	Bolt w/Washer
4-C-2	DC-329	Die-Cast Link

S-102 Lightning Strainer



S-102RA Release Side Assy.

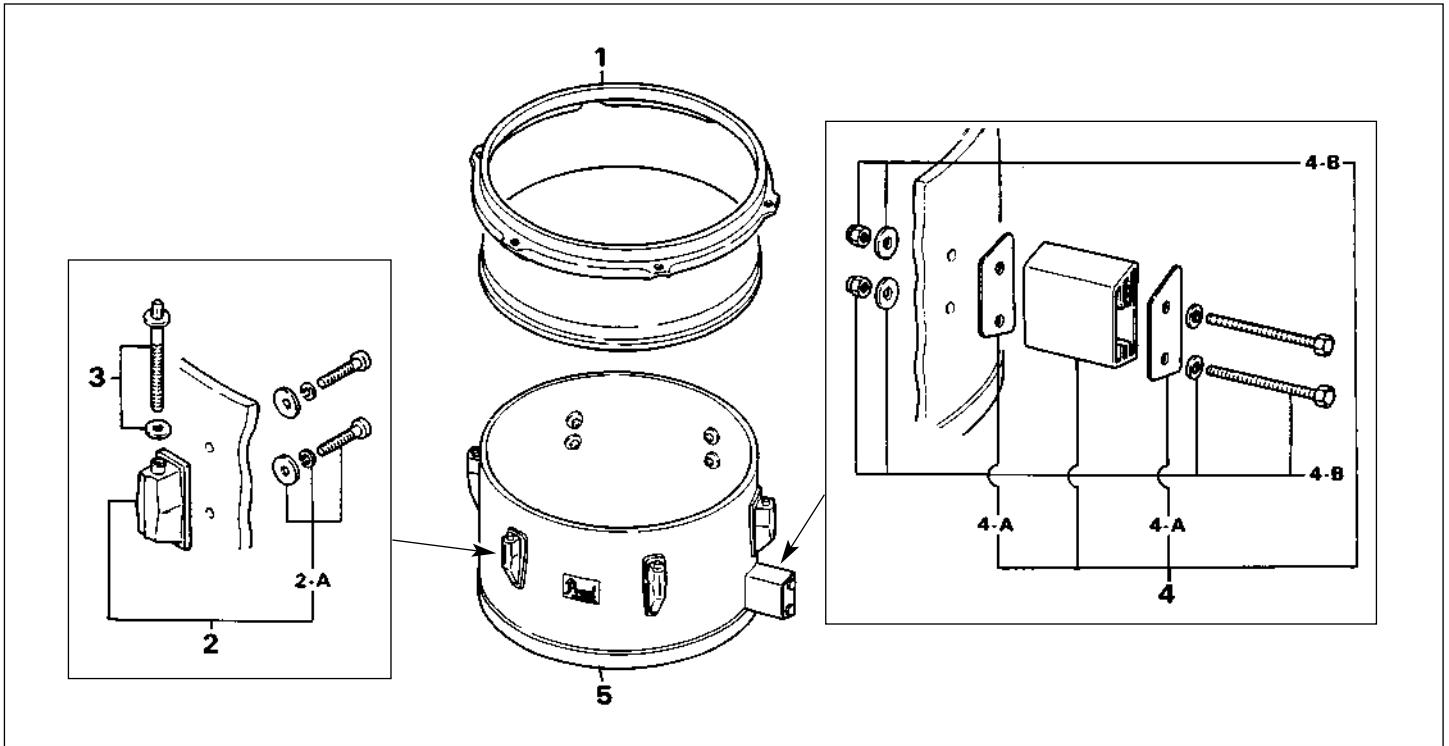
1-A	M-5KA	Adjustment Knob Assy.
1-A-1	M-5K	Adjustment Knob
1-A-2	SB-44	Allen Screw
1-B	BAB-663W	Adjustment Bolt w/Washers
1-C	MBR-102	Mounting Bracket, Complete
1-C-1	SN-516W	Bolt w/Washers
1-C-2	GK-60	Gasket
1-D	SLB-102	Slider Body
2	ME-632WG	Tension Adjustment Bolt w/Washer & Rod Guard
3-A	SL-102	Strainer Lever
3-A-1	SC-510	Screw (M5 x 10mm)
3-B	SLP-102L	Strainer Action Linkage Plate (left)
3-C	SLP-102R	Strainer Action Linkage Plate (Right)
3-D-1	ME-266	Rod

3-D-2	SPC-04	Plastic Collar
3-D-3	SPC-02	Plastic Collar
3-D-4	HEX-5N	Hexagonal Nut (M5)
3-E-1	ME-266	Rod
3-E-2	SPC-10	Plastic Collar
3-E-3	HEX-5N	Hexagonal Nut (M5)

S-102BA Butt Side Assy.

4-A	M-5KA	Adjustment Knob Assy.
4-A-1	M-5K	Adjustment Knob
4-A-2	SB-44	Allen Screw
4-B	BAB-663W	Adjustment Bolt w/Washers
4-C	MBR-102	Mounting Bracket, Complete
4-C-1	SN-516W	Bolt w/Washers
4-C-2	GK-60	Gasket

Marching Toms



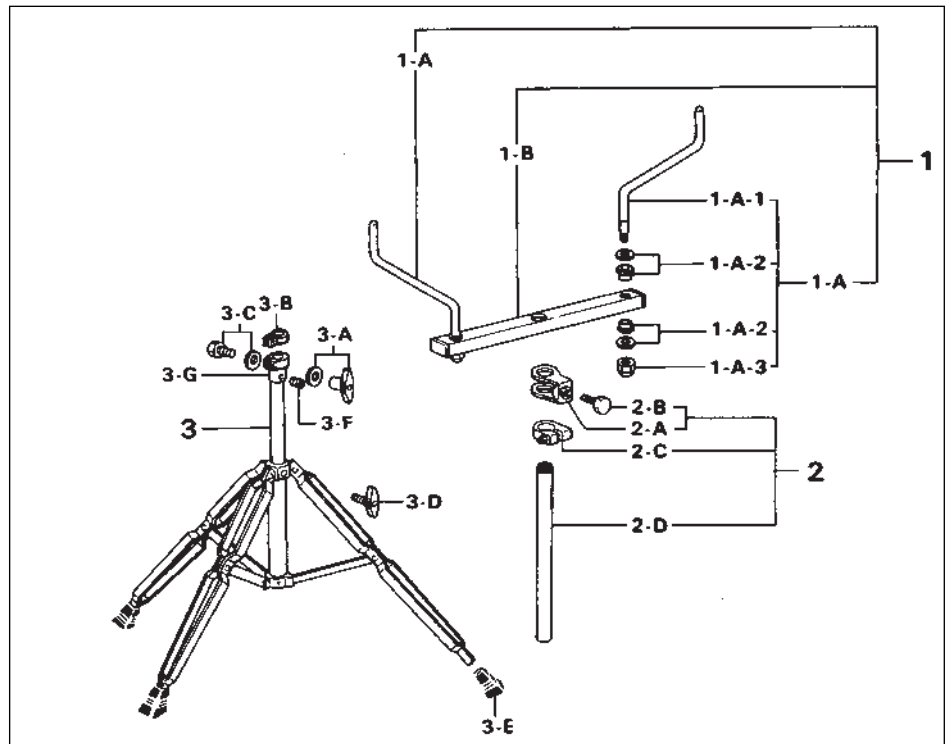
PMT/Championship Series Marching Tom

- | | | | |
|-----|---|-----|--|
| 1 | See Price List for All # & Descriptions | 4-B | SN-680HW Bolt & Nut w/Washers for Tom Spacer |
| 2 | C-052AL Aluminum Die Cast Lug | 5 | MTT-100 Trim Cover |
| 2-A | SM-512B Mounting Screw w/Washers | | |
| 3 | T-054 Tension Key Bolt (6mm) | | |
| 4 | TS-150 Tow Spacer Assy. Complete | | |
| 4-A | GK-TS150 Gasket for Tom Spacer | | |

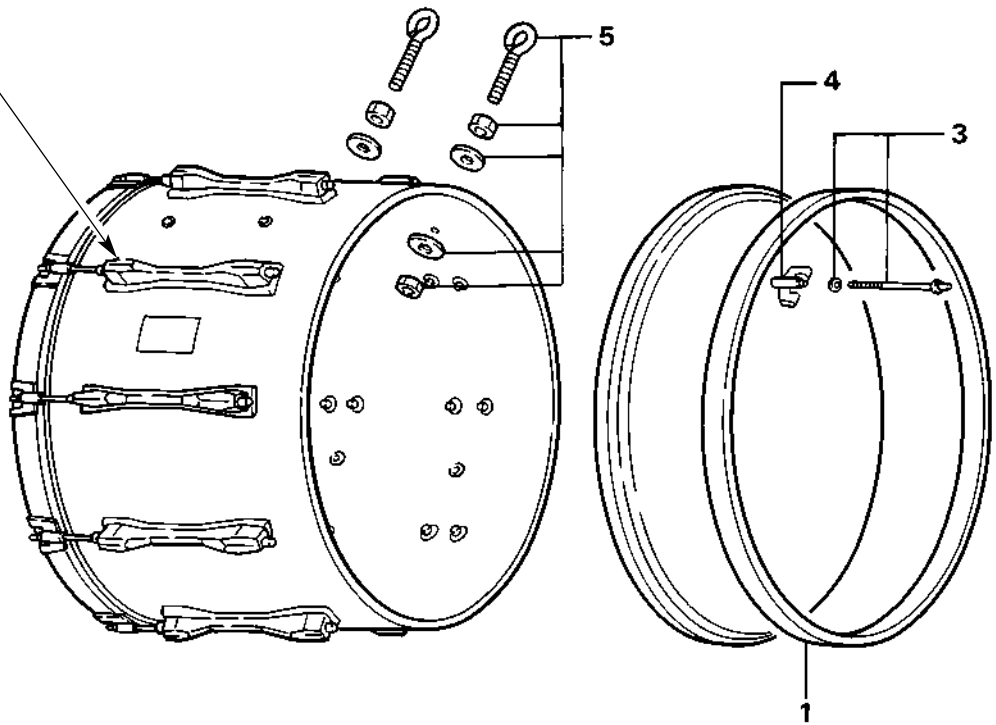
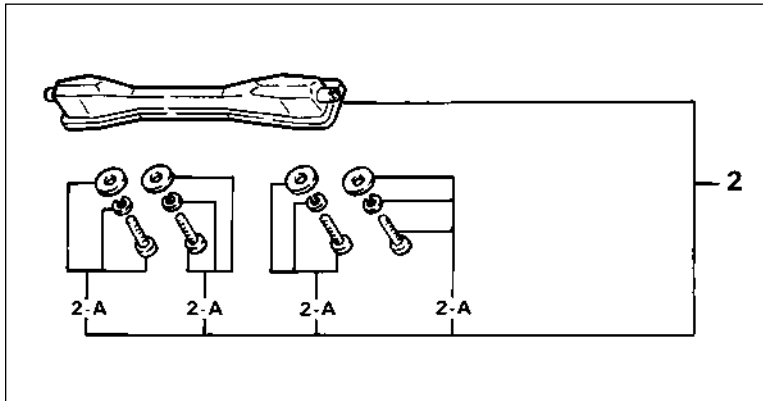
MTS-855W

Marching Tom/Snare Stand

- | | | |
|-------|----------|---------------------------|
| 1 | MTS-2TM | Tom Mounting Assy. |
| 1-A | MTS-6A | Tom Mounting Arm Assy. |
| 1-A-1 | MTS-1 | Tom Mounting Arm |
| 1-A-2 | BK-MTS | Bracket w/Washer |
| 1-A-3 | HEX-1012 | Hexagonal Nut |
| 1-B | MTS-AMB | Arm Mounting Bar Only |
| 2 | MTS-85A | Upper Tube Assy. Complete |
| 2-A | TKM-6M | Mounting Bar Bracket |
| 2-B | SC-812 | Clamp Bolt |
| 2-C | SX-3 | Stop Lock |
| 2-D | MTS-1UT | Upper Tube Only |
| 3 | MTS-85B | Base Assy. Complete |
| 3-A | M-6N | Wing Nut w/Washer |
| 3-B | NB-7N | Nylon Bushing |
| 3-C | SN-635 | Clamp bolt w/Nylon Washer |
| 3-D | M-815N | Die-Cast Wing Bolt |
| 3-E | R-22 | Rubber Tip |
| 3-F | SB-44 | Allen Screw |
| 3-G | DJ-70A | Die-Cast Joint |



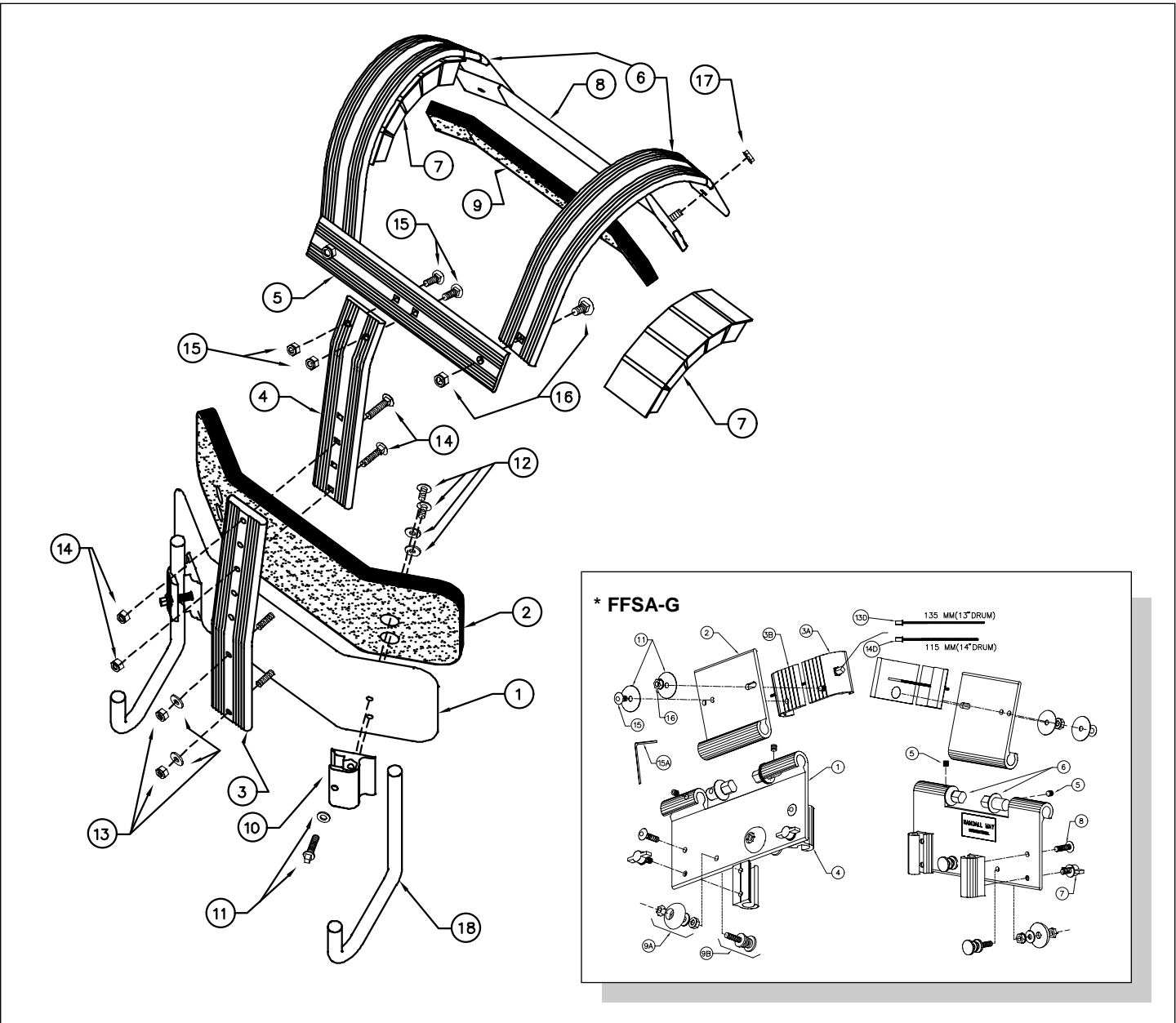
Bass Drums



PDB/Championship Series Bass Drums

1	RIM-16PB	16" Championship Series BD Hoop	2	C-072AL	Aluminum Die Cast Lug-New Style 1997
	RIM-18PB	18" Championship Series BD Hoop		C-070AL	Aluminum Die Cast Lug-Old Style
	RIM-20PB	20" Championship Series BD Hoop	2-A	SM-412B	Mounting Screws w/Washers
	RIM-22PB	22" Championship Series BD Hoop	3	T-066	Tension Key Bolt (16" - 28")
	RIM-24PB	24" Championship Series BD Hoop		T-067	Tension Key Bolt (30" - 32")
	RIM-26PB	26" Championship Series BD Hoop	4	D-042	Tension Claw
	RIM-28PB	28" Championship Series BD Hoop	5	EB-1	Bass Drum Eyebolt for Drum Carriers
	RIM-30PB	30" Championship Series BD Hoop			
	RIM-32PB	32" Championship Series BD Hoop			

Magnesium Carriers

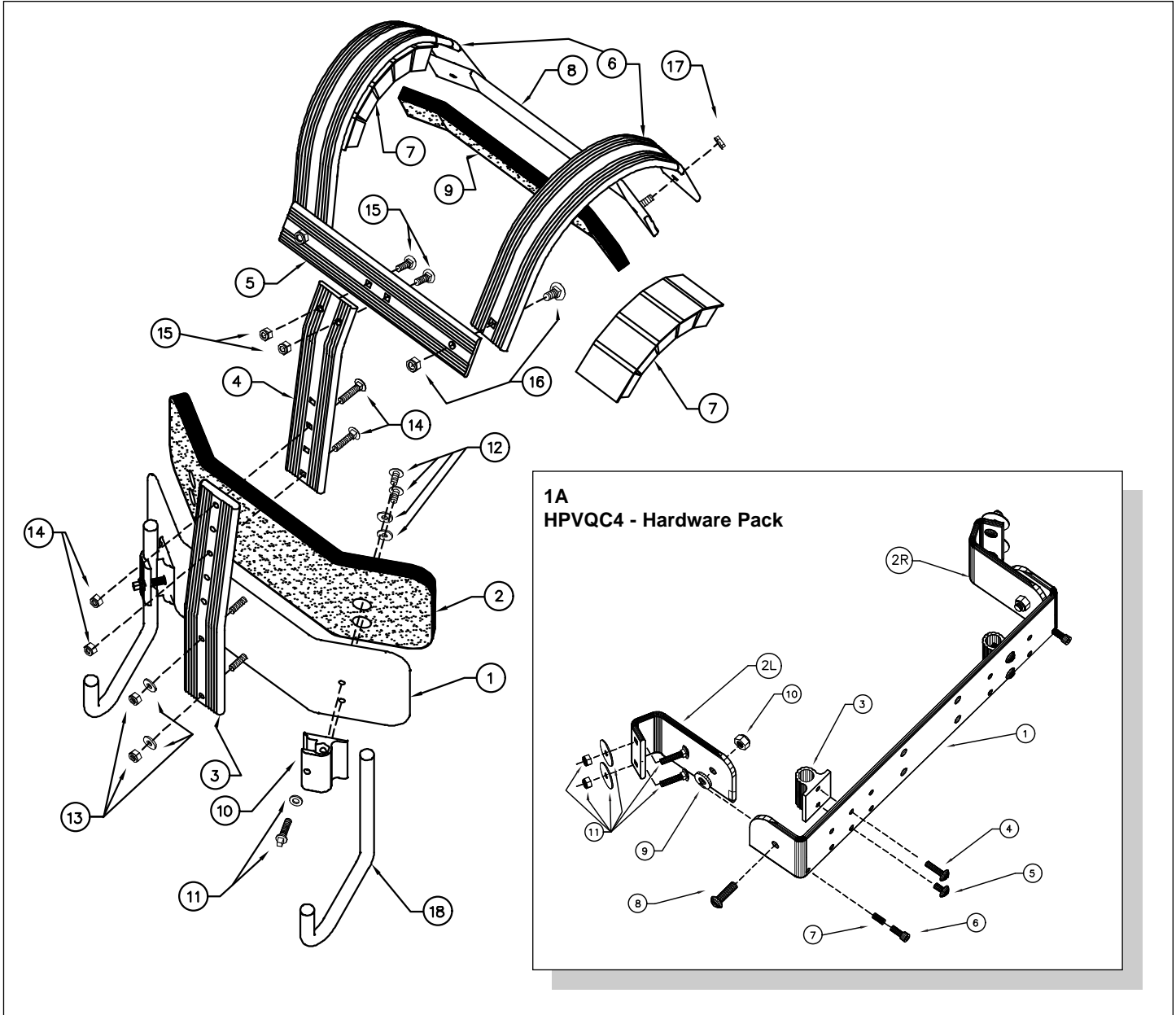


MSG-2 Championship Series Magnesium Snare Drum Carrier

- | | | | | | |
|---|------|---------------------------------|----|-------|--|
| 1 | MG1 | Belly Plate (no foam) Magnesium | 10 | JRCF1 | J-Rod Clamp (flat) |
| 2 | M2S | Belly Plate Foam | 11 | JRCF2 | Keybolt and Washer |
| 3 | MG3 | Lower Vertical, Magnesium | 12 | JRCF3 | Clamp Fasteners (2 bolts / 2 washers) |
| 4 | MG4 | Upper Vertical, Magnesium | 13 | MG13 | Lower Vertical Fasteners (2 washers / 2 nuts) |
| 5 | MG5 | Crossrail, Magnesium | 14 | M9 | Vertical Fasteners (2 bolts / 2 nuts) |
| 6 | MG6 | Shoulder (no foam) Magnesium | 15 | M13S | Crossrail Fasteners (2 bolts / 2 nuts) |
| 7 | MCC1 | May Comfort Core Cushion (x2) | 16 | M14 | Shoulder Fasteners (1 bolt / 1 nut) |
| 8 | MG8 | Backbar, Magnesium (black) | 17 | MV11 | Backbar Fasteners (2 nuts) |
| 9 | MG9 | Backbar Foam Magnesium | 18 | M15 | J Rod |

* See page 18 for complete parts listing and full detailed drawing

Magnesium Carriers



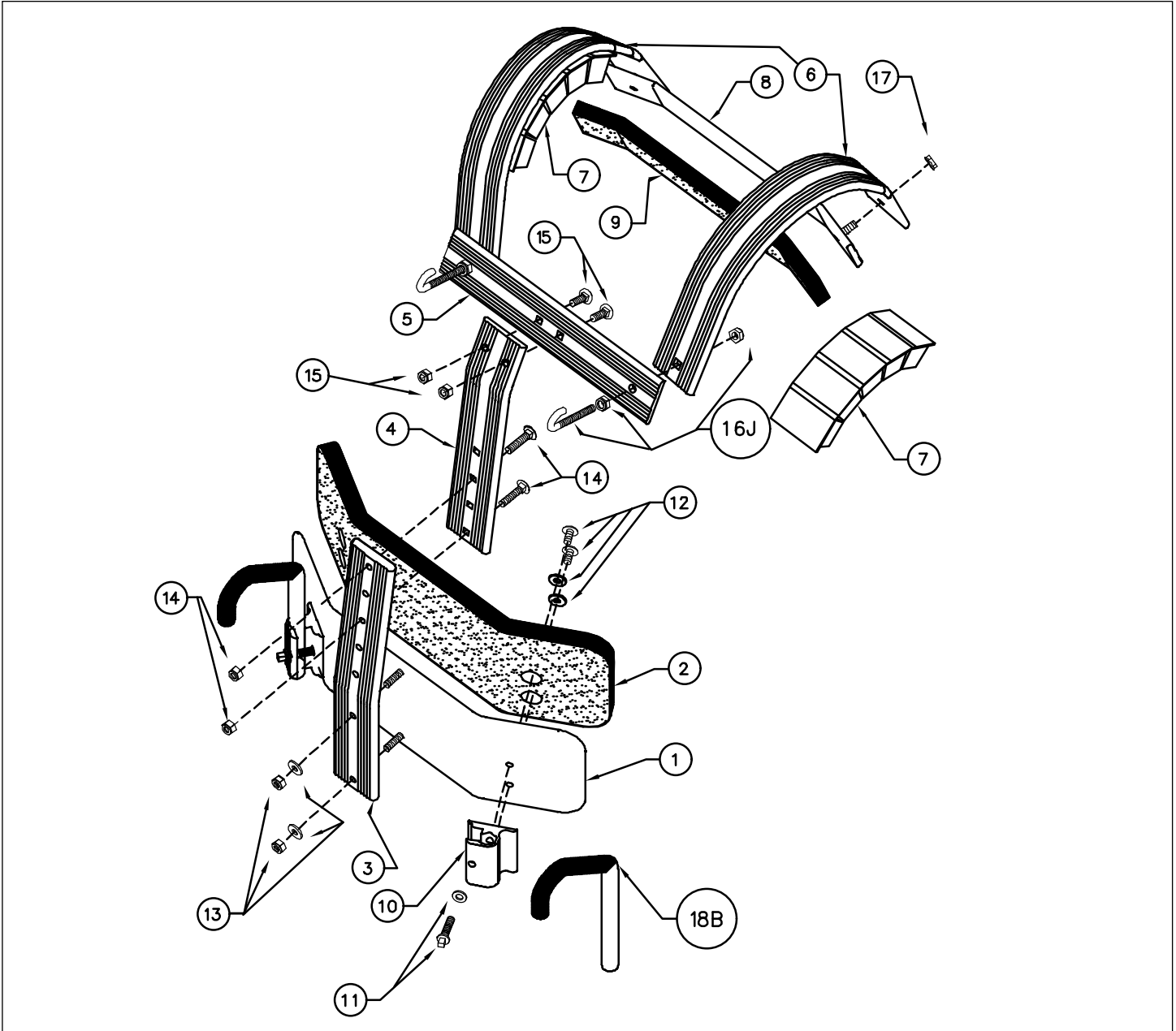
MQG-4 Championship Series Magnesium Quad/Quint Carrier

1	MG1	Belly Plate (no foam) Magnesium
2	M2S	Belly Plate Foam
3	MG3	Lower Vertical, Magnesium
4	MG4	Upper Vertical, Magnesium
5	MG5	Crossrail, Magnesium
6	MG6	Shoulder (no foam) Magnesium
7	MCC1	May Comfort Core Cushion (x2)
8	MG8	Backbar, Magnesium (black)
9	MG9	Backbar Foam Magnesium
10	JRCF1	J-Rod Clamp (flat)
11	JRCF2	Keybolt and Washer
12	JRCF3	Clamp Fasteners (2 bolts / 2 washers)
13	MG13	Lower Vertical Fasteners (2 washers / 2 nuts)
14	M9	Vertical Fasteners (2 bolts / 2 nuts)
15	M13S	Crossrail Fasteners (2 bolts / 2 nuts)
16	M14	Shoulder Fasteners (1 bolt / 1 nut)
17	MV11	Backbar Fasteners (2 nuts)
18	M15	J Rod

HPVQC4 - Hardware Pack

1A	HVPQC4	Hardware Rack Complete
1	MDH1Q	Back Bar
2L	MVDH2L	Left Swivel Arm
2R	MVDH2R	Right Swivel Arm
3	MVDH3	J Rod Bracket
4	MVDH4	J Rod Bracket Stop & Internal Tooth L/W
5	MVDH5	J Rod Bracket Fastener
6	MDH3	Tilt Screw
7	MDH4	Spring
8	MDH5	Swivel Bolt
9	MDH6	Swivel Washer
10	MDH7	Swivel Nut
11	MDH8	Drum to Arm Fasteners

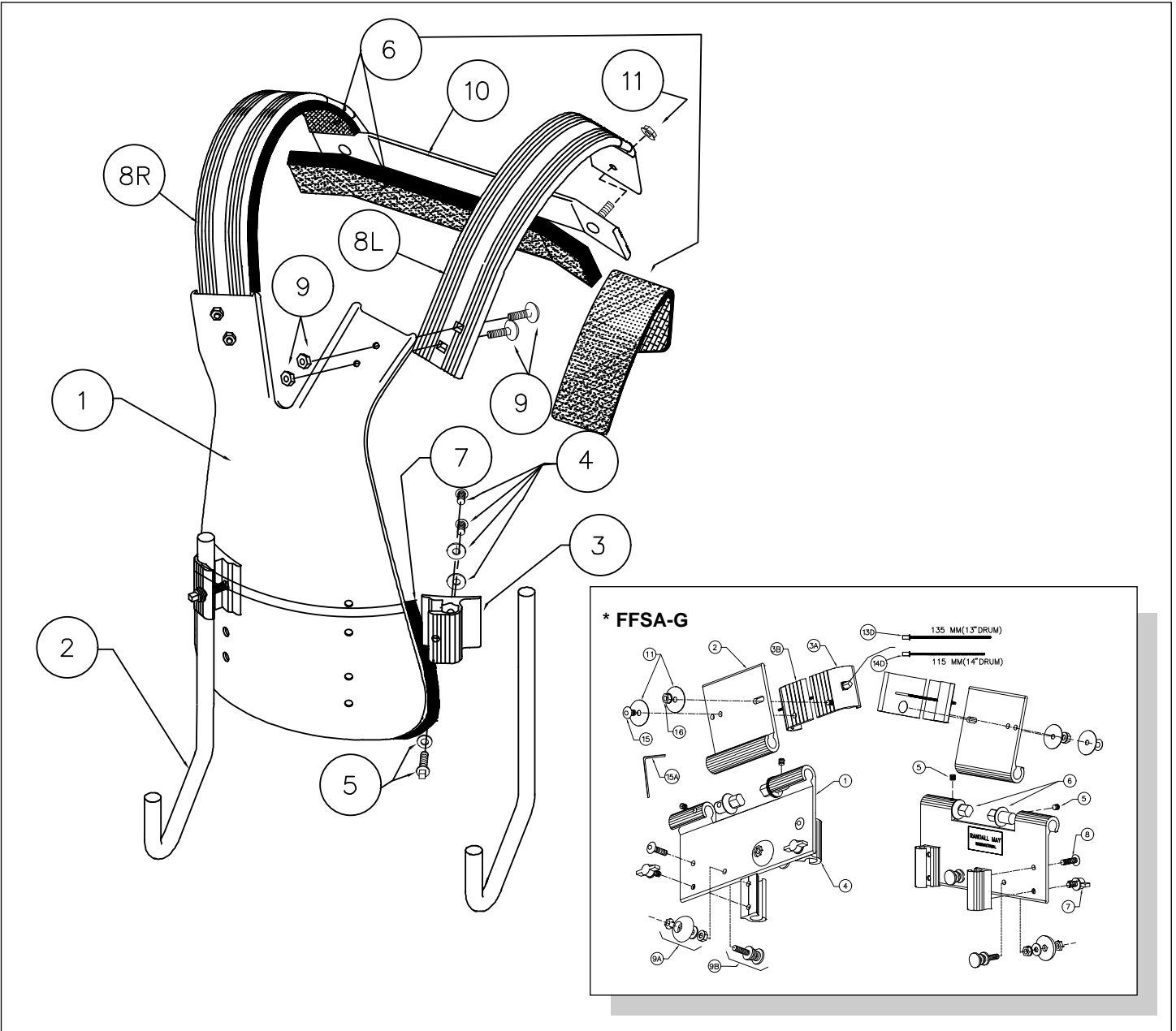
Magnesium Carriers



MBG-1 Championship Series Magnesium Bass Drum Carrier

1	MG1	Belly Plate (no foam) Magnesium	10	JRCF1	J-Rod Clamp (flat)
2	M2S	Belly Plate Foam	11	JRCF2	Keybolt and Washer
3	MG3	Lower Vertical, Magnesium	12	JRCF3	Clamp Fasteners (2 bolts / 2 washers)
4	MG4	Upper Vertical, Magnesium	13	MG13	Lower Vertical Fasteners (2 washers / 2 nuts)
5	MG5	Crossrail, Magnesium	14	M9	Vertical Fasteners (2 bolts / 2 nuts)
6	MG6	Shoulder (no foam) Magnesium	15	M13S	Crossrail Fasteners (2 bolts / 2 nuts)
7	MCC1	May Comfort Core Cushion (x2)	16J	M14J	J Bolt Assy.
8	MG8	Backbar, Magnesium (black)	17	MV11	Backbar Fasteners (2 nuts)
9	MG9	Backbar Foam, Magnesium	18B	MV2B	Dipped J Rod

Mag-Vest Carriers

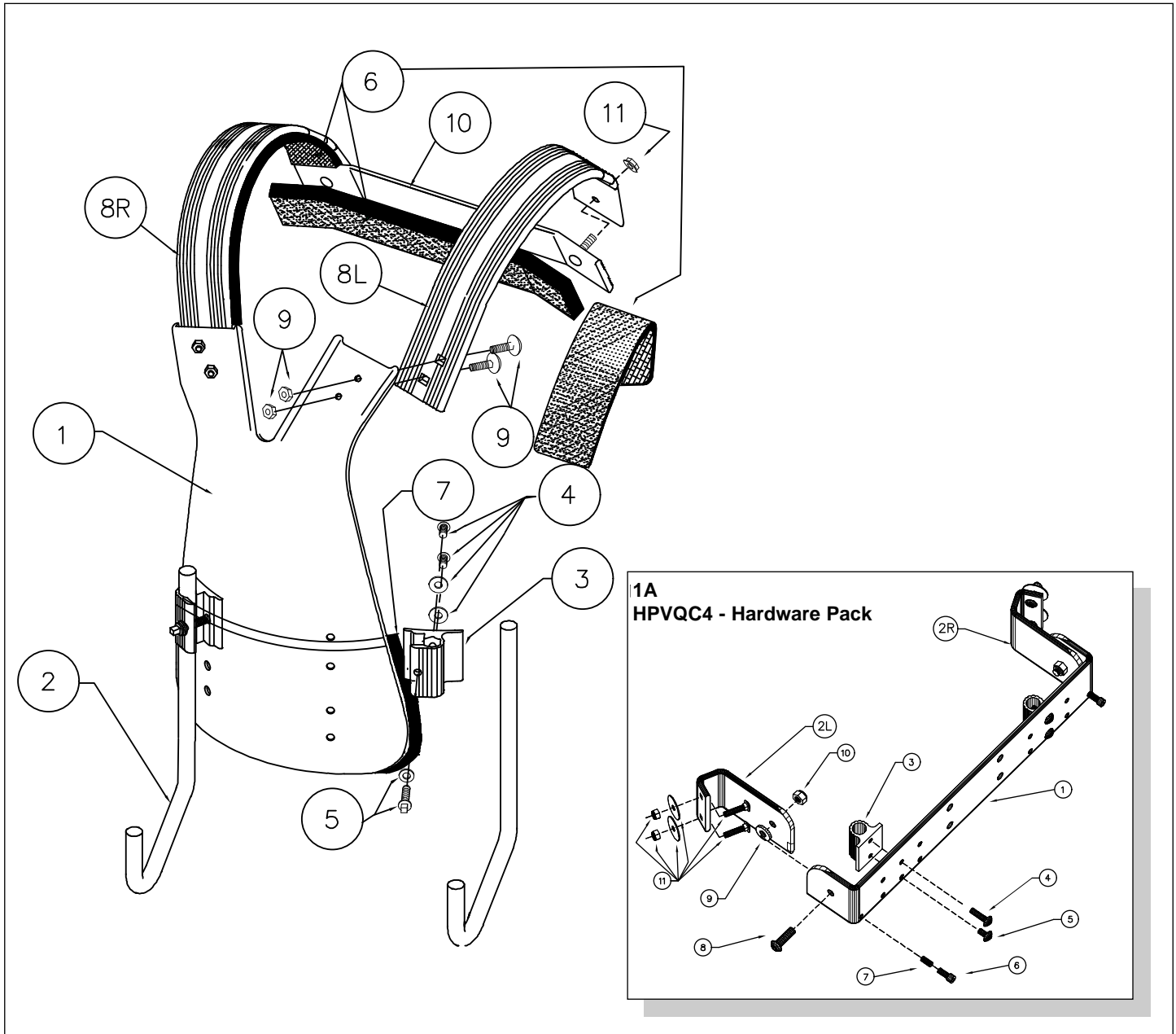


MVSC-2 Championship Series Mag-Vest Snare Drum Carrier

- 1 MV1 Vest Body (no foam)
- 2 MV2S J Rod
- 3 JRCR1 J Rod Clamp (radius)
- 4 JRCR3 Clamp Fasteners (2 bolts / 2 washers)
- 5 JRCF2 Keybolt and Washer
- 6 MV6 Foam Set Upper (2 shoulder / 1 back bar)
- 7 MV7 Belly Plate Foam
- 8L MV8L Left Shoulder (no foam)
- 8R MV8R Right Shoulder (no foam)
- 9 MV9S Shoulder / Vest Fasteners (2 bolts & 2 nuts)
- 10 MV10 Magnesium Backbar (no foam / white)
- 11 MV11 Backbar Fasteners (2 nuts)

* See page 18 for complete parts listing and full detailed drawing

Mag-Vest Carriers



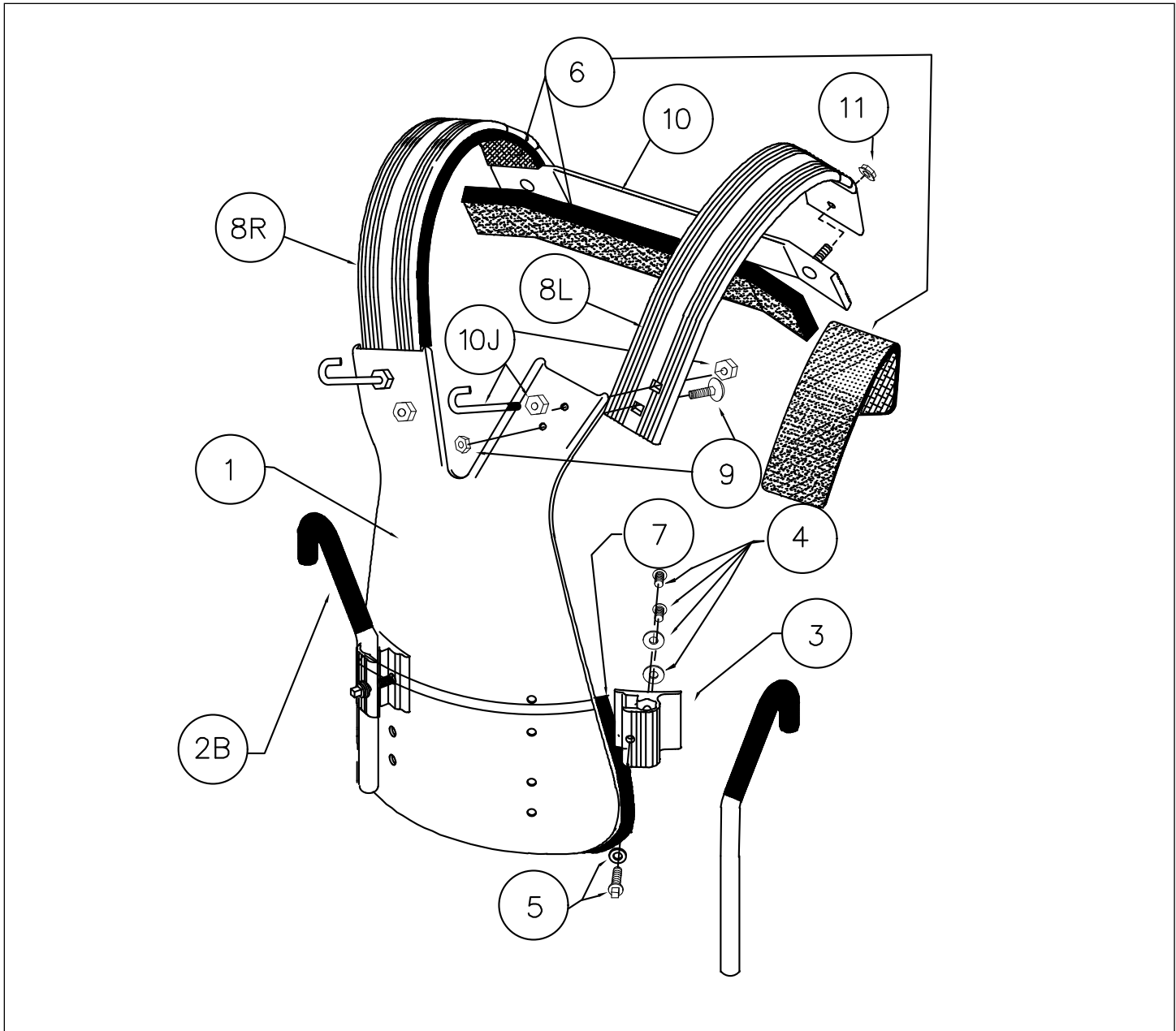
MVQC-4 Championship Series Mag-Vest Quad/Quint Carrier

- | | | |
|----|-------|--|
| 1 | MV1 | Vest Body (no foam) |
| 2 | MV2S | J Rod |
| 3 | JRCR1 | J Rod Clamp (radius) |
| 4 | JRCR3 | Clamp Fasteners (2 bolts / 2 washers) |
| 5 | JRCF2 | Keybolt and Washer |
| 6 | MV6 | Foam Set Upper (2 shoulder / 1 backbar) |
| 7 | MV7 | Belly Plate Foam |
| 8L | MV8L | Left Shoulder (no foam) |
| 8R | MV8R | Right Shoulder (no foam) |
| 9 | MV9S | Shoulder / Vest Fasteners (2 bolts & 2 nuts) |
| 10 | MV10 | Magnesium Backbar (no foam / white) |
| 11 | MV11 | Backbar Fasteners (2 nuts) |

HPVQC4 - Hardware Pack

- | | | |
|----|--------|---|
| 1A | HVPQC4 | Hardware Rack Complete |
| 1 | MDH1Q | Back Bar |
| 2L | MVDH2L | Left Swivel Arm |
| 2R | MVDH2R | Right Swivel Arm |
| 3 | MVDH3 | J Rod Bracket |
| 4 | MVDH4 | J Rod Bracket Stop & Internal Tooth L/W |
| 5 | MVDH5 | J Rod Bracket Fastener |
| 6 | MDH3 | Tilt Screw |
| 7 | MDH4 | Spring |
| 8 | MDH5 | Swivel Bolt |
| 9 | MDH6 | Swivel Washer |
| 10 | MDH7 | Swivel Nut |
| 11 | MDH8 | Drum to Arm Fasteners |

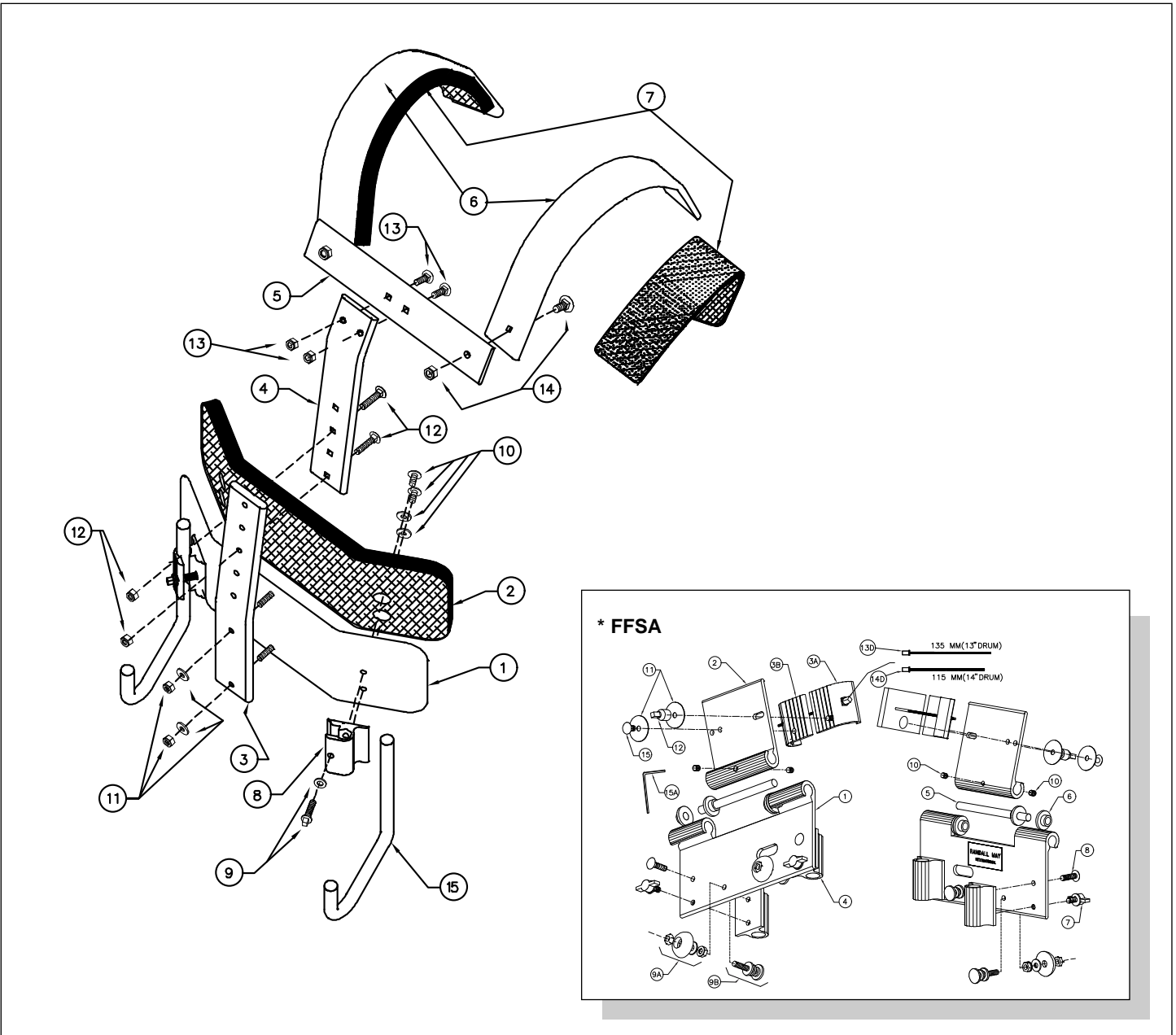
Mag-Vest Carriers



MVBC-1 Championship Series Mag-Vest Bass Drum Carrier

- | | | |
|-----|-------|--|
| 1 | MV1 | Vest Body (no foam) |
| 2B | MV2B | Dipped J Rod |
| 3 | JRCR1 | J Rod Clamp (radius) |
| 4 | JRCR3 | Clamp Fasteners (2 bolts / 2 washers) |
| 5 | JRCF2 | Keybolt and Washer |
| 6 | MV6 | Foam Set Upper (2 shoulder / 1 back bar) |
| 7 | MV7 | Belly Plate Foam |
| 8L | MV8L | Left Shoulder (no foam) |
| 8R | MV8R | Right Shoulder (no foam) |
| 9 | MV9B | Shoulder / Vest Fasteners (2 bolts & 2 nuts) |
| 10 | MV10 | Magnesium Backbar (no foam / white) |
| 10J | M14J | J Bolt Assy. |
| 11 | MV11 | Backbar Fasteners (2 nuts) |

Aluminum Carriers

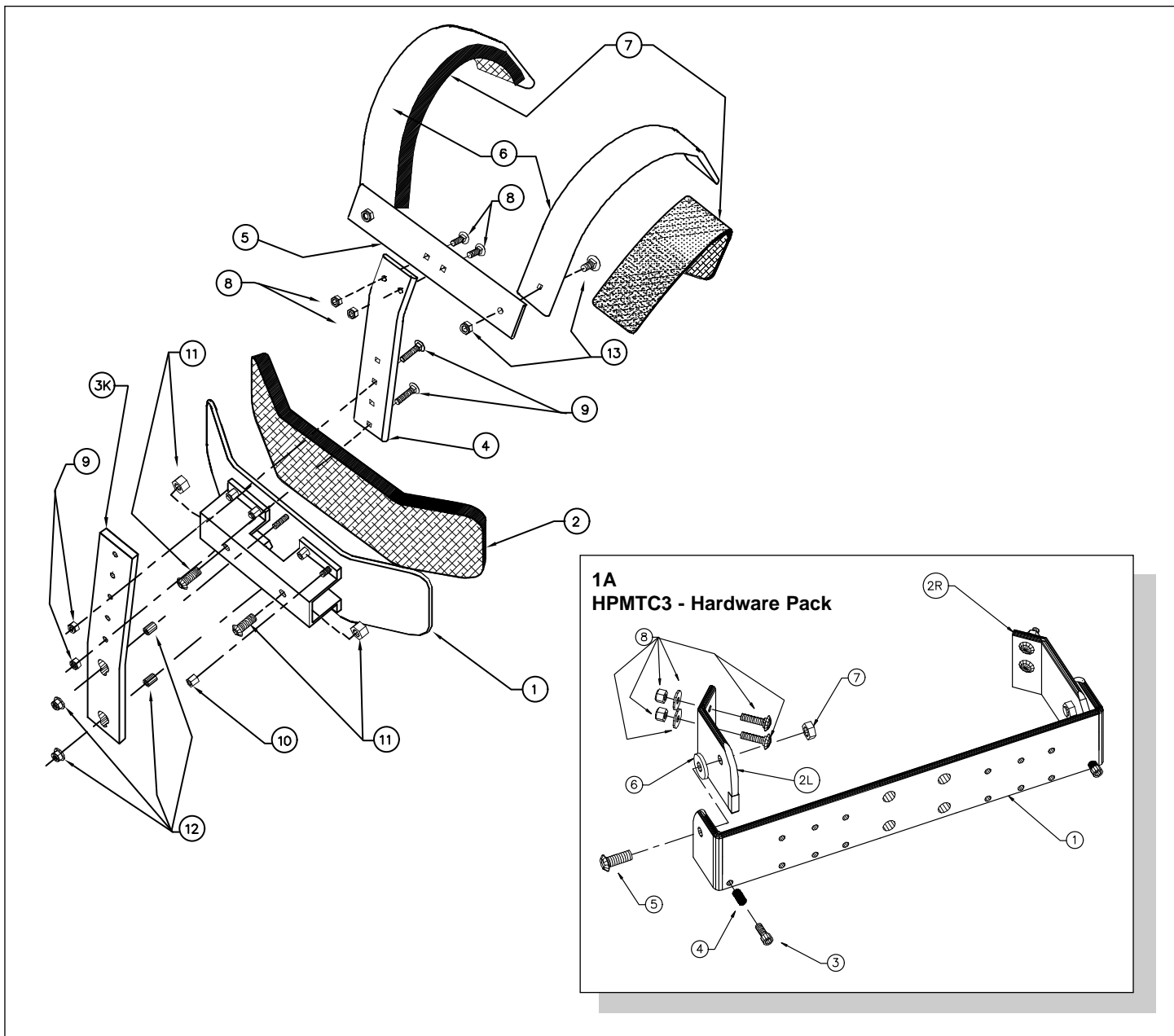


MSC-2 Championship Series Aluminum Snare Drum Carrier

- | | | |
|----|-------|--|
| 1 | M1S | Belly Plate (no foam) |
| 2 | M2S | Belly Plate Foam |
| 3 | M3 | Lower Vertical |
| 4 | M4 | Upper Vertical |
| 5 | M5 | Crossrail |
| 6 | M6 | Shoulder (no foam) |
| 7 | M7 | Shoulder Foam (x2) |
| 8 | JRCF1 | J-Rod Clamp (flat) |
| 9 | JRCF2 | Keybolt and Washer |
| 10 | JRCF3 | Clamp Fasteners (2 bolts / 2 washers) |
| 11 | MG13 | Lower Vertical Fasteners (2 washers / 2 nuts) |
| 12 | M9 | Vertical Fasteners (2 bolts / 2 nuts) |
| 13 | M13S | Crossrail Fasteners (2 bolts / 2 nuts) |
| 14 | M14 | Shoulder Fasteners (1 bolt / 1 nut) |
| 15 | M15 | J-Rod |

* See page 19 for complete parts listing and full detailed drawing

Aluminum Carriers



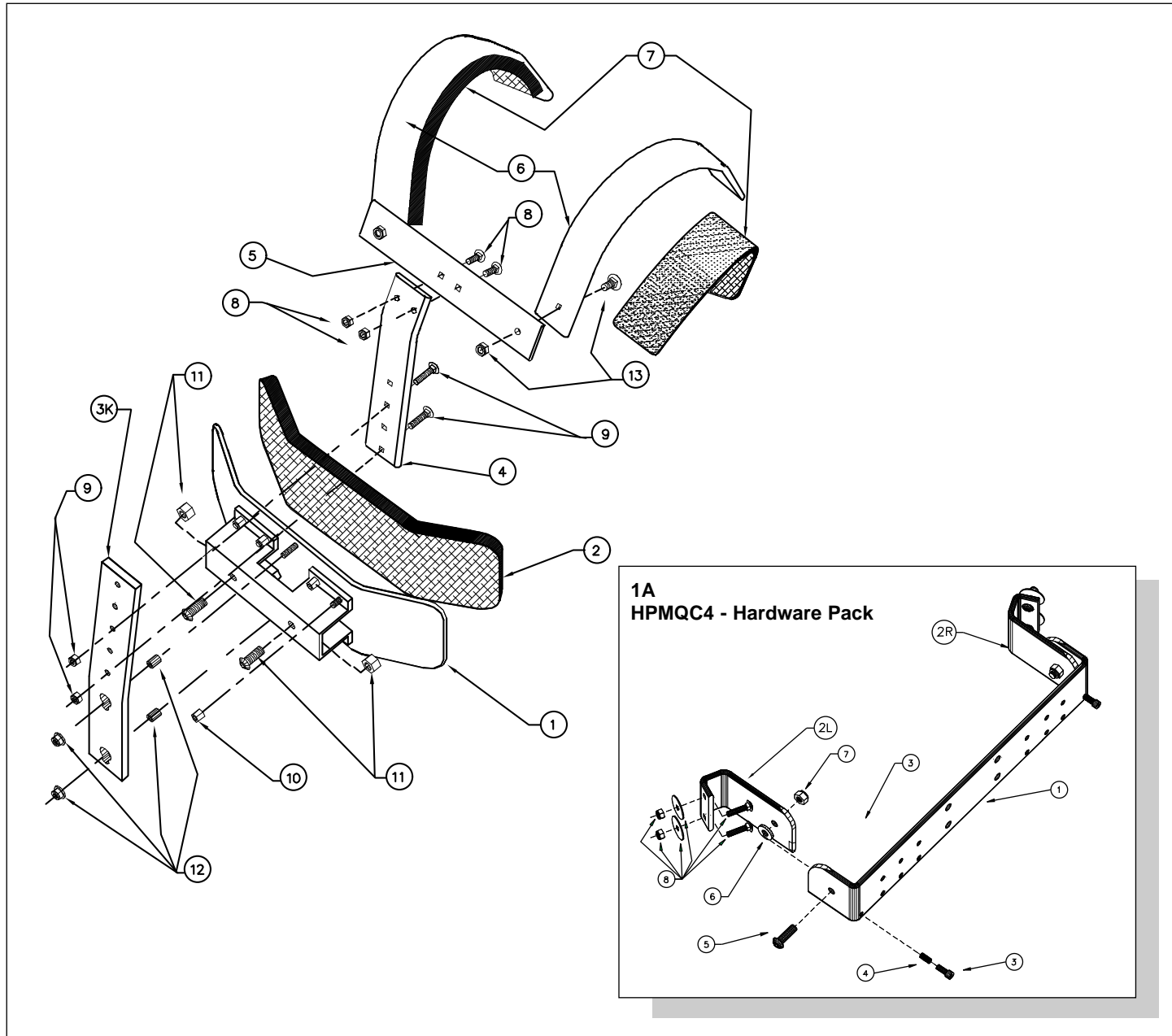
MTC-3 Championship Series Aluminum Trio Carrier

1	M1Q	Belly Plate (no foam)
2	M2B	Belly Plate Foam
3K	M3K	Lower Keyway
4	M4	Upper Vertical
5	M5	Crossrail
6	M6	Shoulder (no foam)
7	M7	Shoulder Foam (x2)
8	M13S	Crossrail Fasteners (2 bolts / 2 nuts)
9	M9	Vertical Fasteners (2 bolts / 2 nuts)
10	M10	Channel Nut
11	M11Q	Component Fasteners (1 bolt / 1 nut)
12	M12	Keyway Fasteners (2 standoffs / 2 nuts)
13	M14	Shoulder Fasteners (1 bolt / 1 nut)

HPMTC3 - Hardware Pack

1A	HPMTC3	Hardware Pack Complete
1	MDH1Q	Back Bar
2L	MDH2L	Left Swivel Arm
2R	MDH2R	Right Swivel Arm
3	MDH3	Tilt Screw
4	MDH4	Spring
5	MDH5	Swivel Bolt
6	MDH6	Swivel Washer
7	MDH7	Swivel Nut
8	MDH8	Drum to Arm Fasteners

Aluminum Carriers



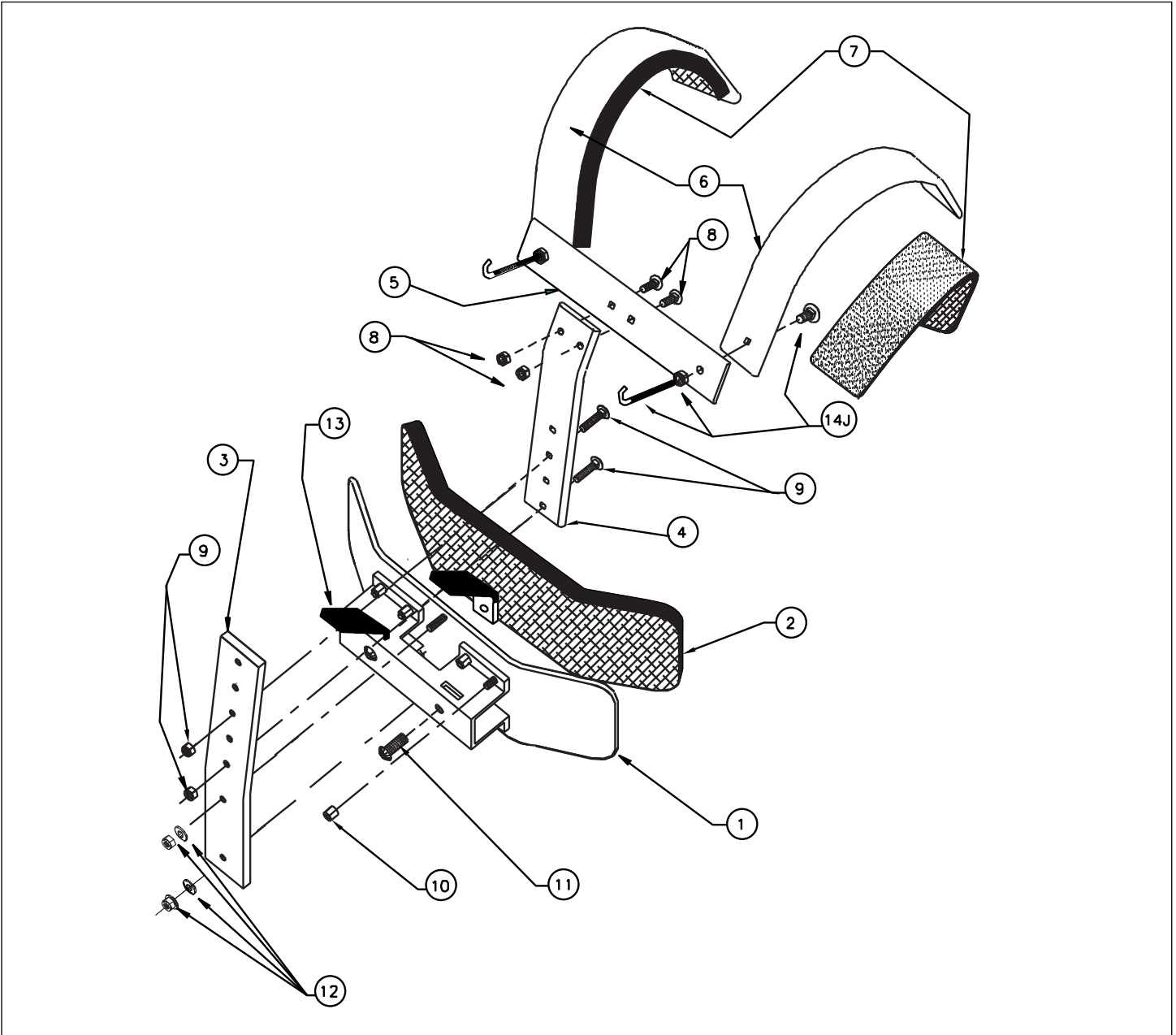
MQC-4 Championship Series Aluminum Quad/Quint Carrier

1	M1Q	Belly Plate (no foam)
2	M2B	Belly Plate Foam
3K	M3K	Lower Keyway
4	M4	Upper Vertical
5	M5	Crossrail
6	M6	Shoulder (no foam)
7	M7	Shoulder Foam (x2)
8	M13S	Crossrail Fasteners (2 bolts / 2 nuts)
9	M9	Vertical Fasteners (2 bolts / 2 nuts)
10	M10	Channel Nut
11	M11Q	Component Fasteners (1 bolt / 1 nut)
12	M12	Keyway Fasteners (2 standoffs / 2 nuts)
13	M14	Shoulder Fasteners (1 bolt / 1 nut)

HPMQC4 - Hardware Pack

1A	HPMQC4	Hardware Pack Complete
1	MDH1Q	Back Bar
2L	MVDH2L	Left Swivel Arm
2R	MVDH2R	Right Swivel Arm
3	MDH3	Tilt Screw
4	MDH4	Spring
5	MDH5	Swivel Bolt
6	MDH6	Swivel Washer
7	MDH7	Swivel Nut
8	MDH8	Drum to Arm Fasteners

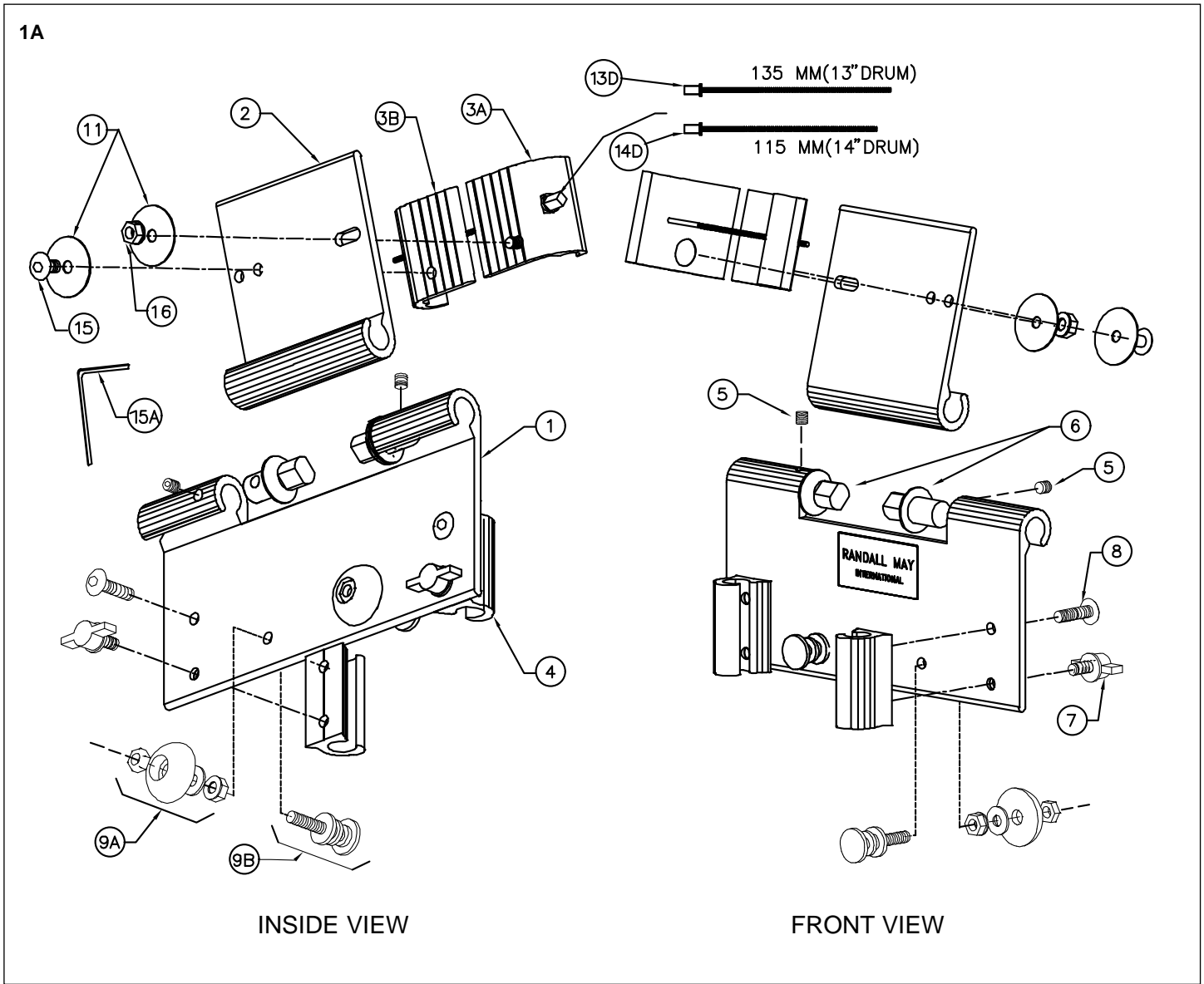
Aluminum Carriers



MBC-1 Championship Series Aluminum Bass Drum Carrier

- | | | |
|-----|------|--|
| 1 | M1B | Belly Plate (no foam) |
| 2 | M2B | Belly Plate Foam |
| 3 | M3 | Lower Vertical |
| 4 | M4 | Upper Vertical |
| 5 | M5 | Crossrail |
| 6 | M6 | Shoulder (no foam) |
| 7 | M7 | Shoulder Foam (x2) |
| 8 | M13S | Crossrail Fasteners (2 bolts / 2 nuts) |
| 9 | M9 | Vertical Fasteners (2 bolts / 2 nuts) |
| 10 | M10 | Channel Nut |
| 11 | M11B | Bumper Bolt |
| 12 | MG13 | Lower Vertical Fasteners (2 washers / 2 nuts) |
| 13 | M13B | Dipped Bent Bumper |
| 14J | M14J | J Bolt Assy. |

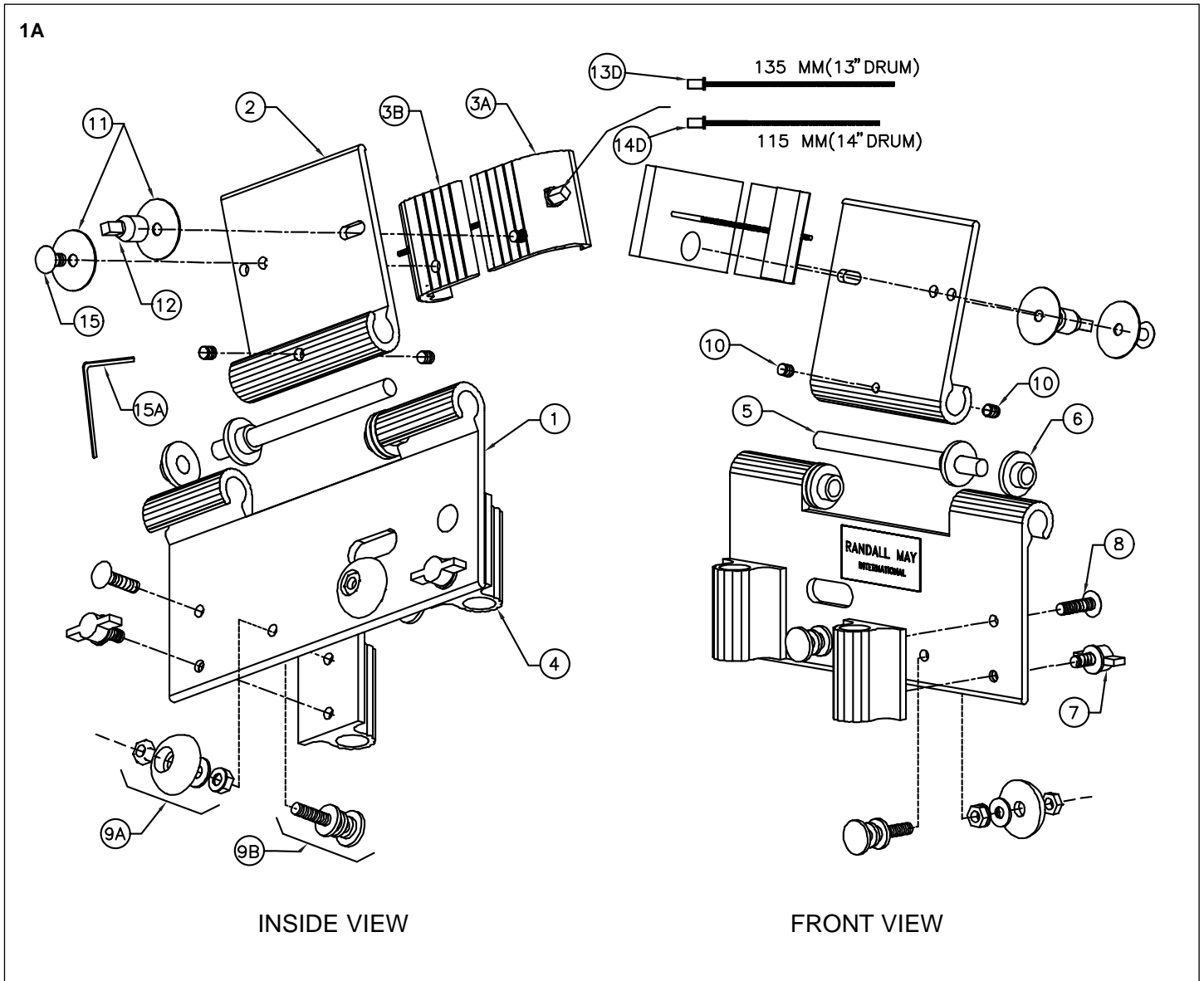
FFSAG Free Floating Snare Adapter



FFSAG Free Floating Snare Drum Adapter

- | | | |
|-----|---------|---|
| 1A | FFSAG | Magnesium Carrier Attachment (complete) |
| 1 | FFSAG1 | Mag. Stationary Hinge |
| 2 | FFSAG2 | Mag. Rotation Hinge |
| 3A | FFSA3A | Movable Claw |
| 3B | FFSA3B | Stationary Claw |
| 4 | FFSAG4 | Mag. J-Rod Bracket (PR) |
| 5 | FFSAG5 | 10/32 Set Screw |
| 6 | FFSAG6 | Separating Hinge Pin (x 2) |
| 7 | FFSA7 | T-Bolt |
| 8 | FFSA8 | J-Rod Bracket Stop & Internal Tooth L/W |
| 9A | FFSA9A | Rubber Bumperr Assy. |
| 9B | FFSA9B | Adjustment Rod for 9A |
| 11 | FFSA11 | Fender Washers (x2) |
| 13D | T067/2 | Tension Clamp Rod |
| 14D | TO66 | Tension Clamp Rod |
| 15 | FFSA15 | Claw Bolt 1/4 Split L/W |
| 15A | FFSA15A | Hex Key for 15 |
| 16 | FFSAG16 | 1/4 - 20 Nut |

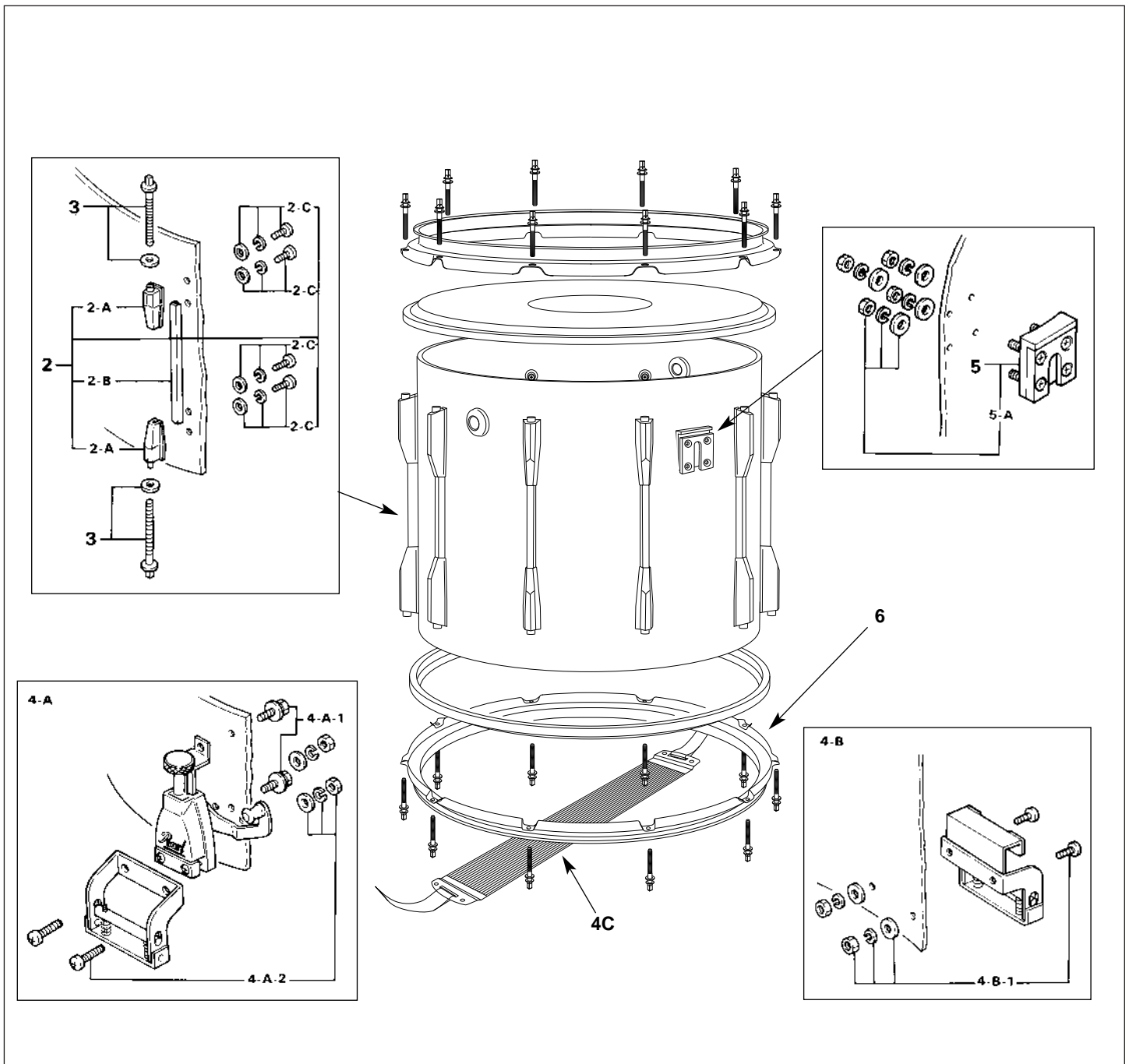
FFSA Free Floating Snare Adapter



FFSA Free Floating Snare Drum Adapter

1A	FFSA	Aluminum Carrier Attachment (complete)
1	FFSA1	Stationary Hinge
2	FFSA2	Rotation Hinge
3A	FFSA3A	Movable Claw
3B	FFSA3B	Stationary Claw
4	FFSA4	J-Rod Bracket
5	FFSA5	Hinge Rod
6	FFSA6	Shoulder Washer
7	FFSA7	T-Bolt
8	FFSA8	J-Rod Bracket Stop & Internal Tooth L/W
9A	FFSA9A	Rubber Bumper Assy.
9B	FFSA9B	Adjustment Rod for 9A
10	FFSA10	Set Screws (x2)
11	FFSA11	Fender Washers (x2)
12	FFSA12	Drum Key Nut & 1/4 Split L/W
13D	T067/2	Tension Clamp Rod
14D	TO66	Tension Clamp Rod
15	FFSA15	Claw Bolt 1/4 Split L/W
15A	FFSA15A	Hex Key for 15

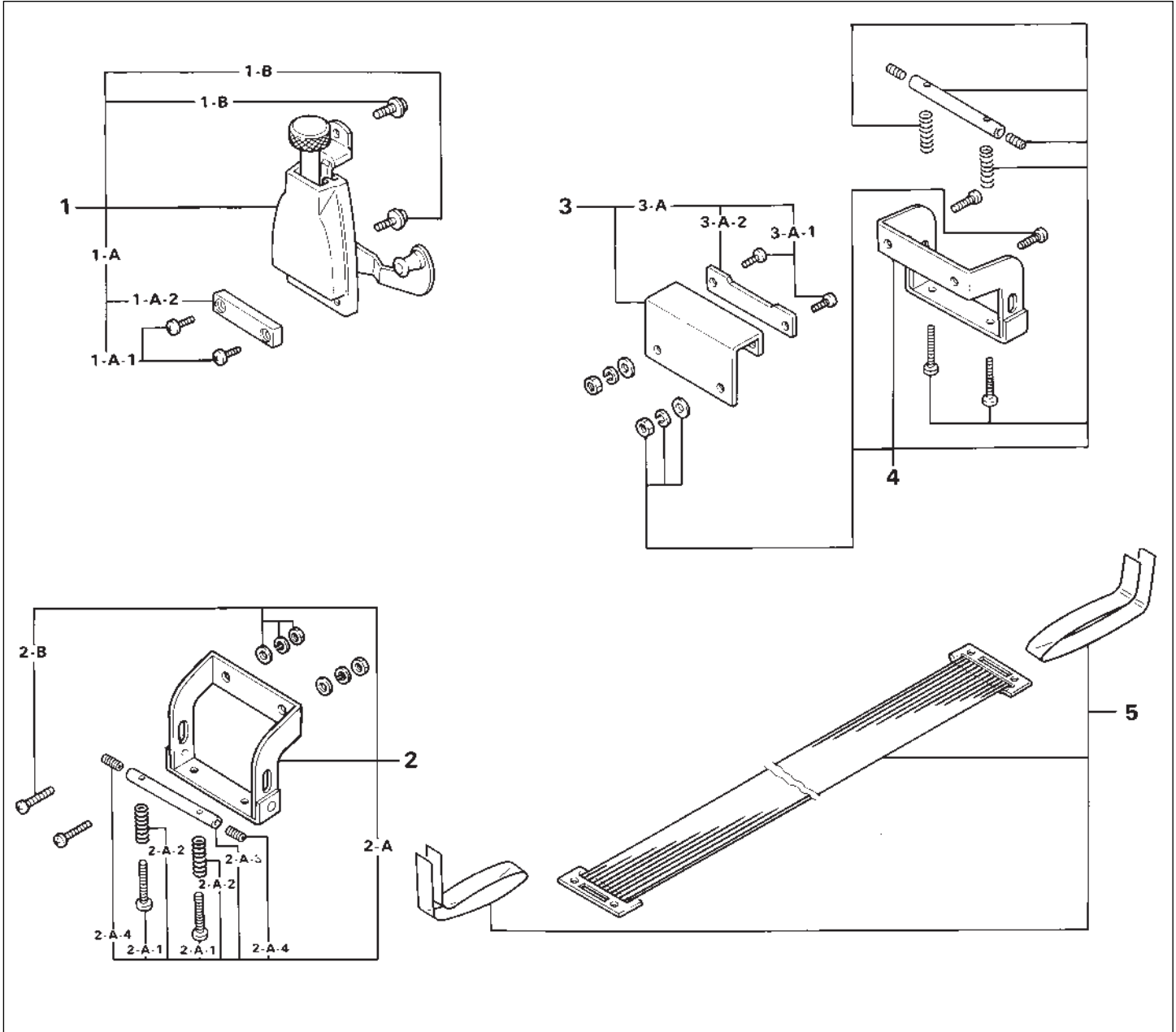
COMPETITOR SERIES Snare Drums



CSD-214 & CSD-213 Competitor Series Snare Drums

1	RIM-1410B	14" Regular Hoop (batter side)	4-A-1	SM-512	Mounting Screws w/Washers
	RIM-1308B	13" Regular Hoop (batter side)	4-A-2	SC-518HW	Snare End to Throw-Off Mounting Screws (2)
2	HL-12M	3-Piece Tension Lug Assy. Complete	4-B	S-14MBA	Butt End Snare Assy. Complete
2-A	HL-12ML	Lug ONLY	4-B-1	SM-512	Mounting Screws w/Washers
2-B	HL-12MJ	Lug Joint	4-C	GS-142	Nylon Gut Snare For CSD214
2-C	SM-512	Mounting Screws w/Washers		GS-132	Nylon Gut Snare For CSD213
3	T-056	Tension Key Bolt	5	CT-1216	Clip Bracket Assy. Complete
4-A	S-14MRA	Release Side Assy. Complete	5-A		Clip Bracket Mounting Screws & Nuts w/Washers
			6	RIM-1410S	14" Regular Hoop (snare side)
				RIM-1308S	13" Regular Hoop (snare side)

S-014M Strainer

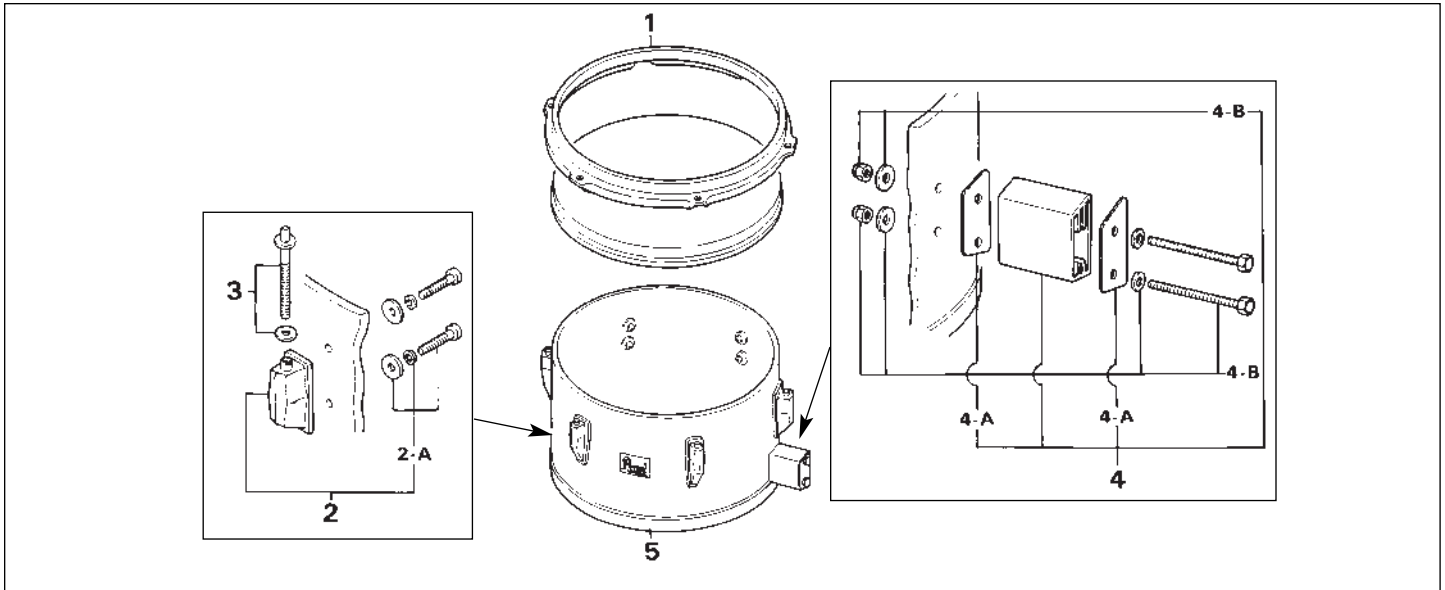


S-014M Strainer (for CSD-214)

1	S-14MRA	Release Side Assy. Complete
1-A	S-11B	Snare Mounting Plate w/Screws
1-A-1	S-11N	Screw (one each)
1-A-2	S-11C	Snare Mounting Plate ONLY
1-B	SM-512	Mounting Screw (one each)
2	BG-1M	Bridge Assy. Complete
2-A	BG-1A	Strap Bar Assy. Complete
2-A-1	BG-1B	Adjustment Bolt (one each)
2-A-2	BG-1C	Spring ONLY
2-A-3	BG-1D	Strap Bar ONLY
2-A-4	SB-45	Allen Screw
2-B	SC-518HW	Bolt & Nut w/Washers (one each)

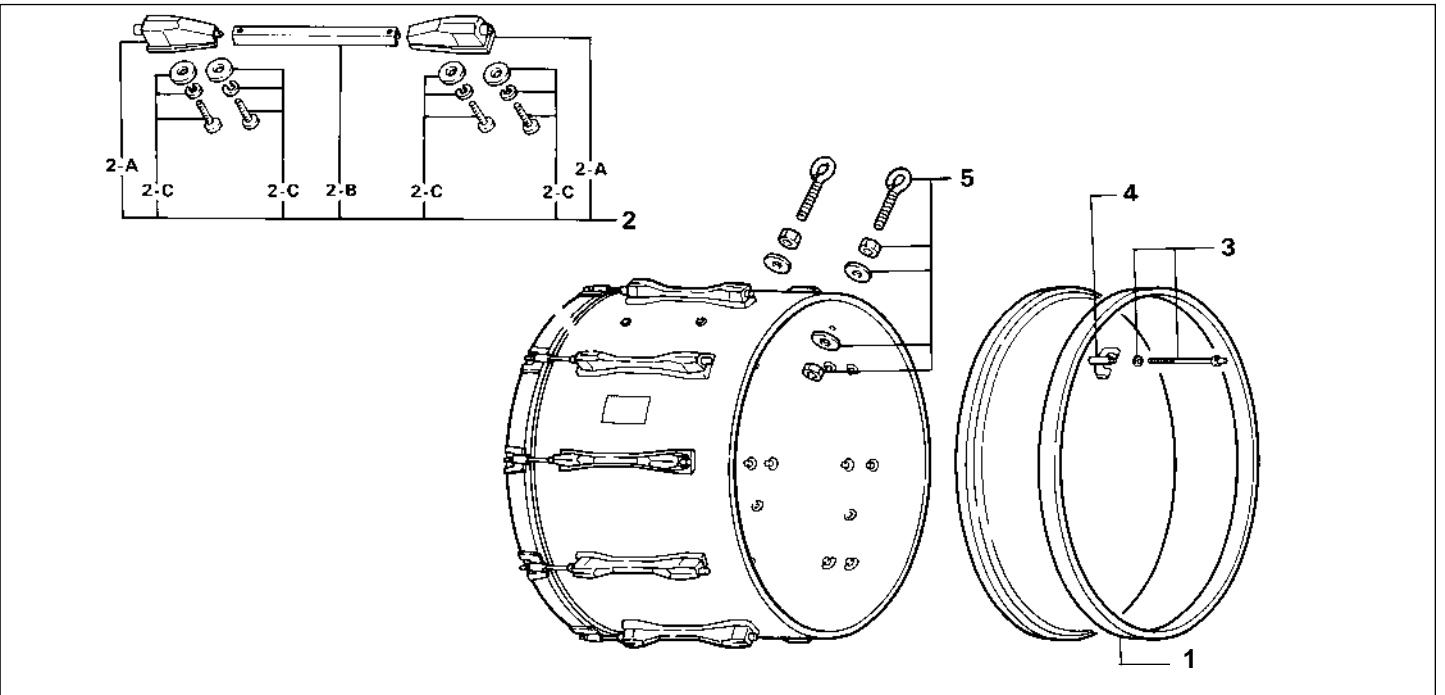
3	S-14BA	Butt Side Assy. Complete
3-A	S-11CA	Snare Mounting Plate w/Screws
3-A-1	S-11N	Screw (one each)
3-A-2	S-11GE	Snare Mounting Plate
4	BG-1M	Bridge Assy. Complete
5	GS142	Synthetic Gut Snare w/Plastic Straps 14"
	GS132	Synthetic Gut Snare w/Plastic Straps 13"

Marching Toms/Bass Drums



CMT / Competitor Series Marching Tom

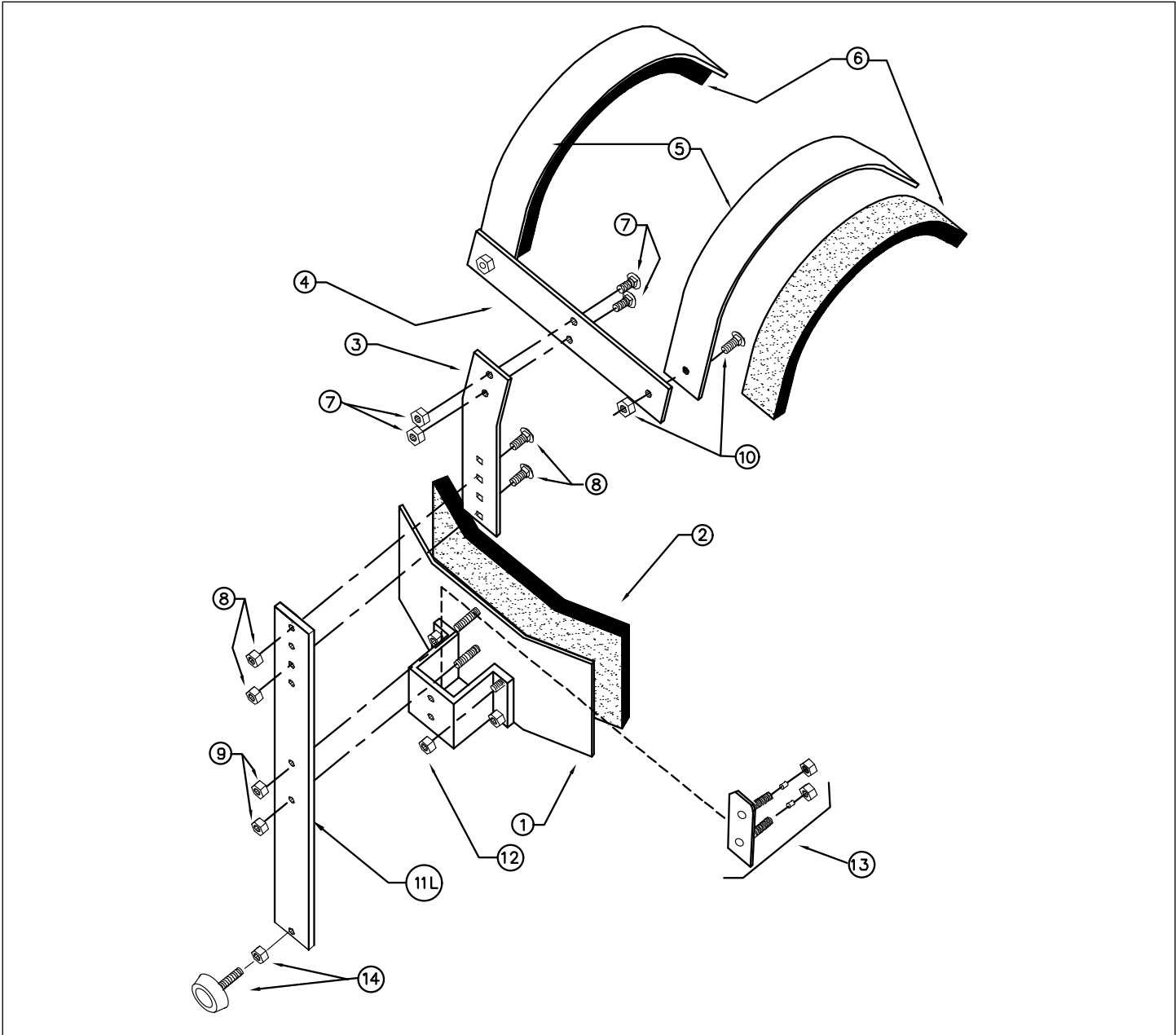
1	RIM-0804	8"/ 4 Hole Steel Hoop	3	T-056	Tension Key Bolt
	RIM-1006	10"/ 6 Hole Steel Hoop	4	TS-150	Tom Spacer Assy. Complete
	RIM-1206	12"/ 6 Hole Steel Hoop	4-A	GK-TS150	Gasket
	RIM-1306	13"/ 6 Hole Steel Hoop	4-B	SN-680HW	Bolt & Nut w/Washers
2	RL-05M	Regular Lug Assy.	5	MTT-100	Trim Cover
2-A	SM-512	Mounting Screw w/Washers			



CBD / Competitor Series Bass Drum

1	RIM-16CB	16" Competitor Series BD Hoop	2	HL-14BM	3-Piece Hi-Tension Lug Assy.
	RIM-18CB	18" Competitor Series BD Hoop	2A	HL-14BL	Lug ONLY
	RIM-20CB	20" Competitor Series BD Hoop	2A1	SM-412	Mounting Screw w/Washers
	RIM-22CB	22" Competitor Series BD Hoop	2B	HL-14BJ	Lug Joint
	RIM-24CB	24" Competitor Series BD Hoop	3	T-066	Tension Key Bolt
	RIM-26CB	26" Competitor Series BD Hoop	4	D-042	Tension Claw
	RIM-28CB	28" Competitor Series BD Hoop	5	EB-1	Bass Drum Eyebolt for Carriers

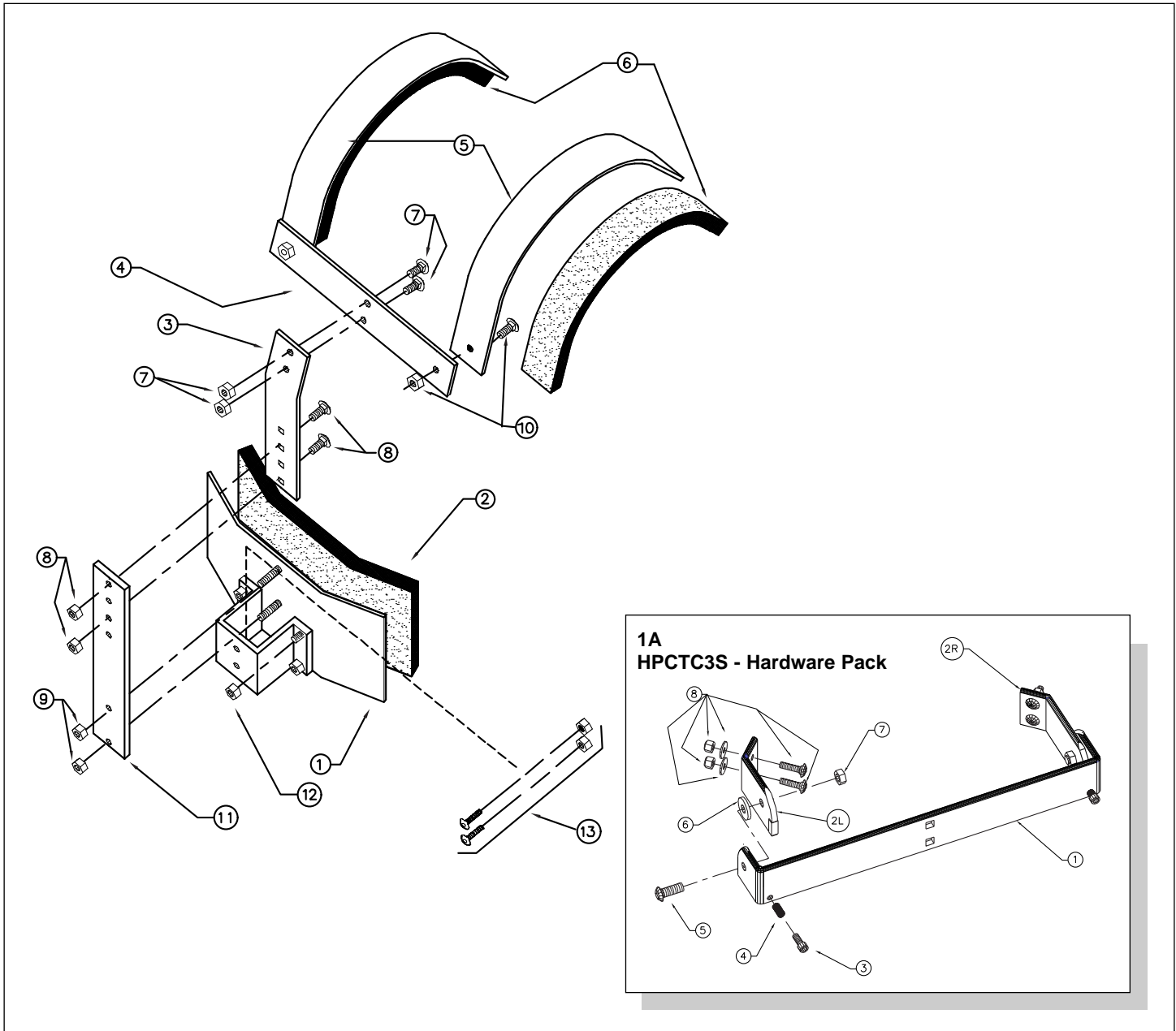
Aluminum Carriers



CSC-1 Competitor Series Aluminum Snare Drum Carrier

- | | | |
|-----|------|--|
| 1 | C1 | Belly Plate (no foam) |
| 2 | C2 | Belly Plate Foam |
| 3 | C3 | Upper Vertical |
| 4 | C4 | Crossrail |
| 5 | C5 | Shoulder (no foam) |
| 6 | C6 | Shoulder Foam (x2) |
| 7 | C7 | Crossrail Fasteners (2 bolts / 2 nuts) |
| 8 | C8 | Vertical Fasteners (2 bolts / 2 nuts) |
| 9 | C9 | Lower Vertical Fasteners (2 washers / 2 nuts) |
| 10 | C10 | Shoulder Fasteners (1 bolt / 1 nut) |
| 11L | C11L | Long Lower Vertical |
| 12 | M10 | Channel Nut |
| 13 | C13S | Tongue Assy. |
| 14 | C14S | Snare Bumper Assy. |

Aluminum Carriers



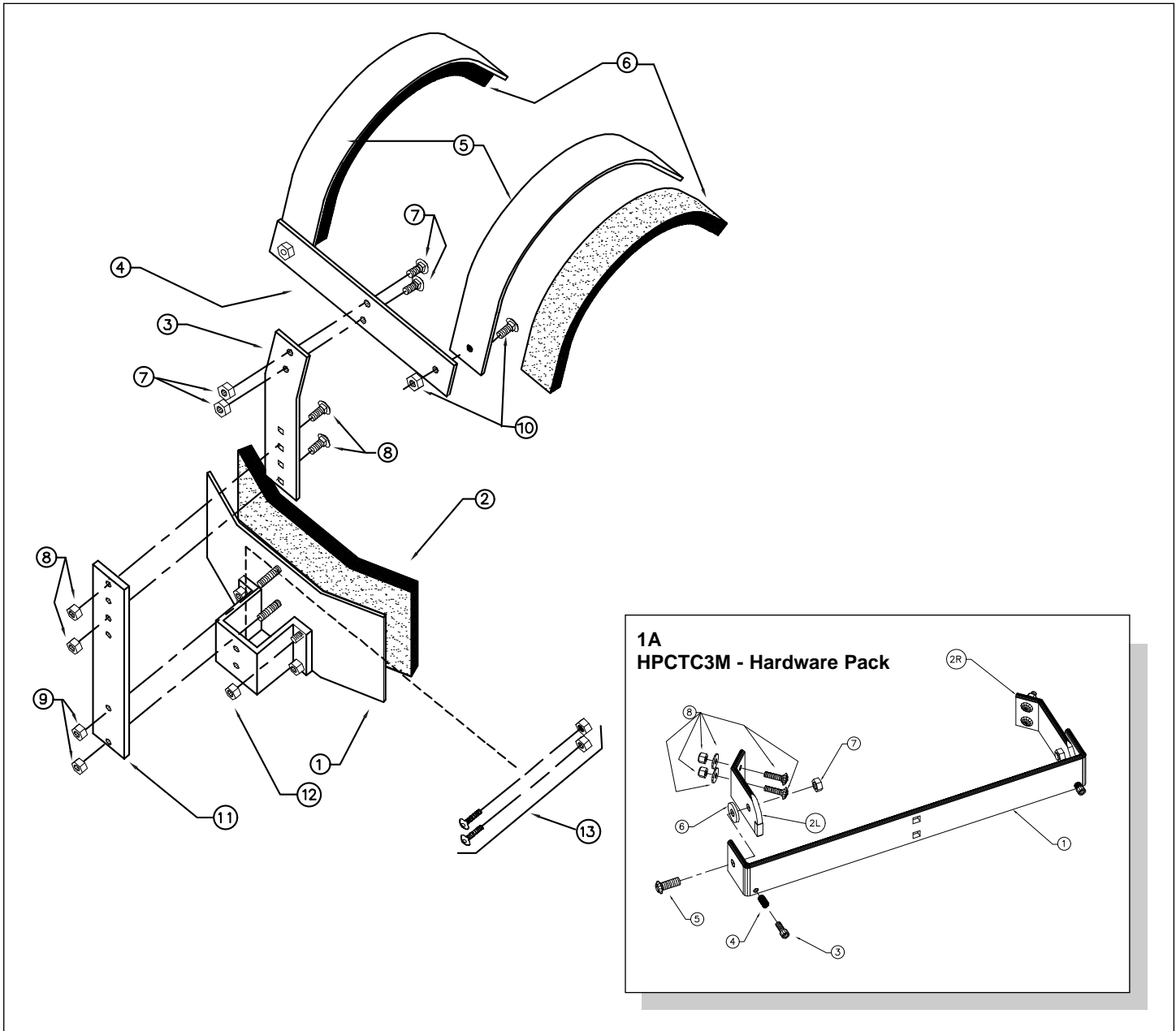
CTC-3S Competitor Series Aluminum Trio Carrier (8", 10", 12")

1	C1	Belly Plate (no foam)
2	C2	Belly Plate Foam
3	C3	Upper Vertical
4	C4	Crossrail
5	C5	Shoulder (no foam)
6	C6	Shoulder Foam (x2)
7	C7	Crossrail Fasteners (2 bolts / 2 nuts)
8	C8	Vertical Fasteners (2 bolts / 2 nuts)
9	C9	Lower Vertical Fasteners (2 washers / 2 nuts)
10	C10	Shoulder Fasteners (1 bolt / 1 nut)
11	C11	Lower Vertical
12	M10	Channel Nut
13	C13	Component Fasteners (2 bolts / 2 nuts)

HPCTC3S - Hardware Pack

1A	HPCTC3S	Hardware Pack Complete
1	CDH1TS	Back Bar
2L	CDH2LT	Left Swivel Arm
2R	CDH2RT	Right Swivel Arm
3	MDH3	Tilt Screw
4	MDH4	Spring
5	MDH5	Swivel Bolt
6	MDH6	Swivel Washer
7	MDH7	Swivel Nut
8	MDH8	Drum to Arm Fasteners

Aluminum Carriers



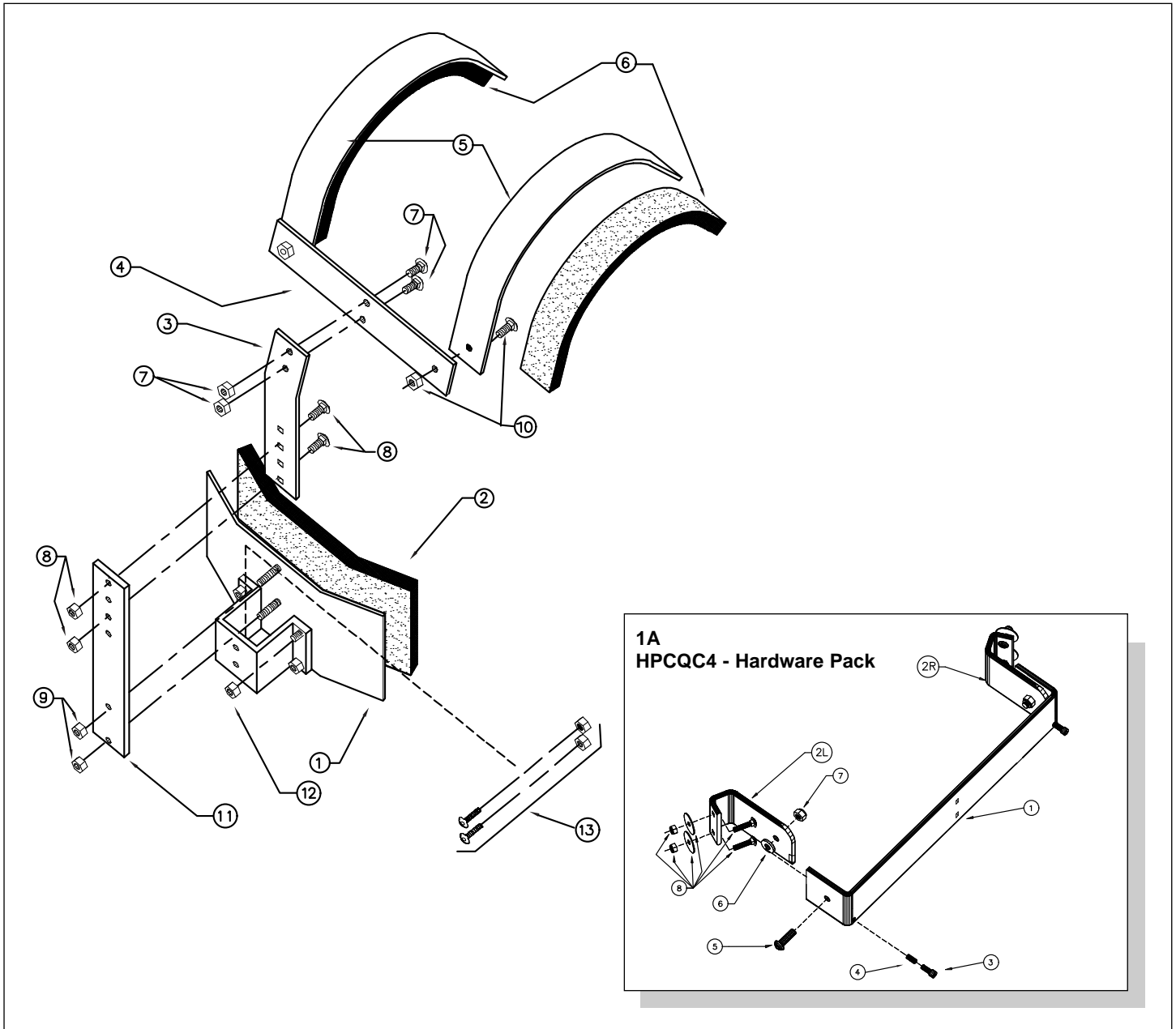
CTC-3M Competitor Series Aluminum Trio Carrier (10", 12", 13")

1	C1	Belly Plate (no foam)
2	C2	Belly Plate Foam
3	C3	Upper Vertical
4	C4	Crossrail
5	C5	Shoulder (no foam)
6	C6	Shoulder Foam (x2)
7	C7	Crossrail Fasteners (2 bolts / 2 nuts)
8	C8	Vertical Fasteners (2 bolts / 2 nuts)
9	C9	Lower Vertical Fasteners (2 washers / 2 nuts)
10	C10	Shoulder Fasteners (1 bolt / 1 nut)
11	C11	Lower Vertical
12	M10	Channel Nut
13	C13	Component Fasteners (2 bolts / 2 nuts)

HPCTC3M - Hardware Pack

1A	HPCTC3M	Hardware Pack Complete
1	CDH1Q	Back Bar
2L	CDH2LT	Left Swivel Arm
2R	CDH2RT	Right Swivel Arm
3	MDH3	Tilt Screw
4	MDH4	Spring
5	MDH5	Swivel Bolt
6	MDH6	Swivel Washer
7	MDH7	Swivel Nut
8	MDH8	Drum to Arm Fasteners

Aluminum Carriers



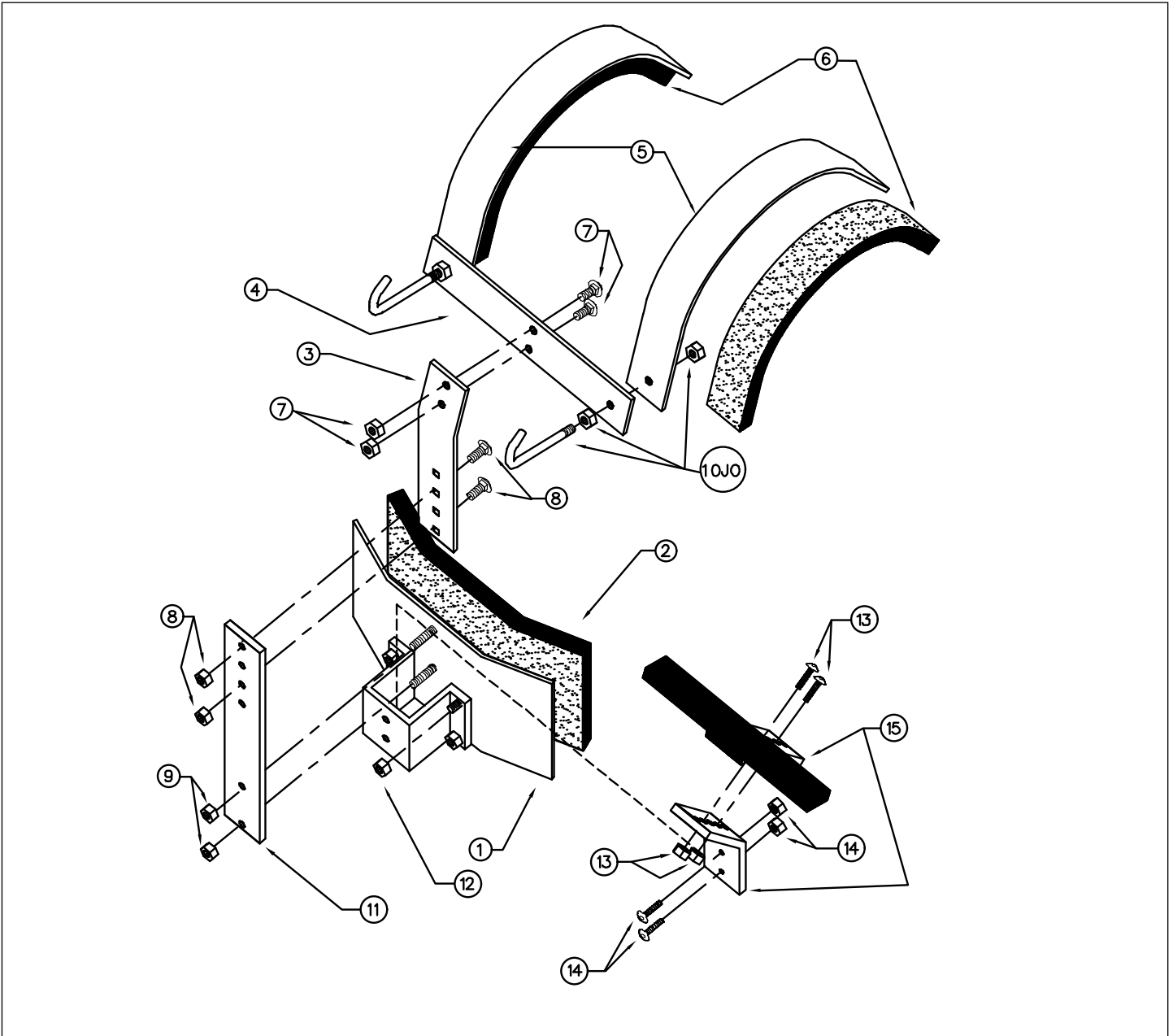
CQC-4 Competitor Series Aluminum Quad Carrier

1	C1	Belly Plate (no foam)
2	C2	Belly Plate Foam
3	C3	Upper Vertical
4	C4	Crossrail
5	C5	Shoulder (no foam)
6	C6	Shoulder Foam (x2)
7	C7	Crossrail Fasteners (2 bolts / 2 nuts)
8	C8	Vertical Fasteners (2 bolts / 2 nuts)
9	C9	Lower Vertical Fasteners (2 washers / 2 nuts)
10	C10	Shoulder Fasteners (1 bolt / 1 nut)
11	C11	Lower Vertical
12	M10	Channel Nut
13	C13	Component Fasteners (2 bolts / 2 nuts)

HPCQC4 - Hardware Pack

1A	HPCQC4	Hardware Pack Complete
1	CDH1Q	Back Bar
2L	CDH2LQ	Left Swivel Arm
2R	CDH2RQ	Right Swivel Arm
3	MDH3	Tilt Screw
4	MDH4	Spring
5	MDH5	Swivel Bolt
6	MDH6	Swivel Washer
7	MDH7	Swivel Nut
8	MDH8	Drum to Arm Fasteners

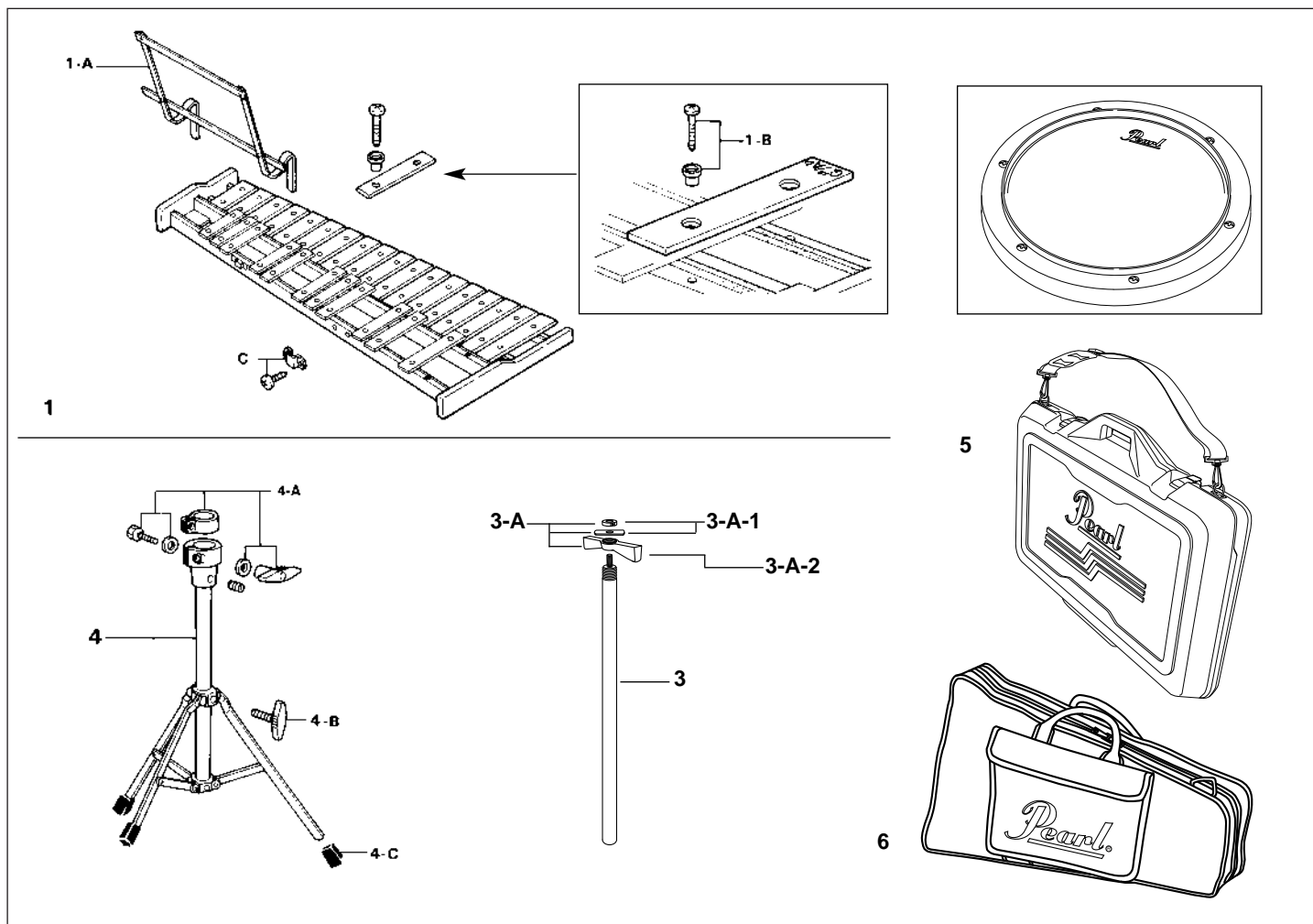
Aluminum Carriers



CBC-1 Competitor Series Aluminum Bass Drum Carrier

- 1 C1 Belly Plate (no foam)
- 2 C2 Belly Plate Foam
- 3 C3 Upper Vertical
- 4 C4 Crossrail
- 5 C5 Shoulder (no foam)
- 6 C6 Shoulder Foam (x2)
- 7 C7 Crossrail Fasteners (2 bolts / 2 nuts)
- 8 C8 Vertical Fasteners (2 bolts / 2 nuts)
- 9 C9 Lower Vertical Fasteners (2 washers / 2 nuts)
- 10JO C10J J Bolt Assy.
- 11 C11 Lower Vertical
- 12 M10 Channel Nut
- 13 C13B Upper T Fasteners (2 bolts / 2 nuts)
- 14 C14B Lower T Fasteners (2 bolts / 2 nuts)
- 15 C15 Two Part Dipped Tee

PK-750 & PK-600 Percussion Kits



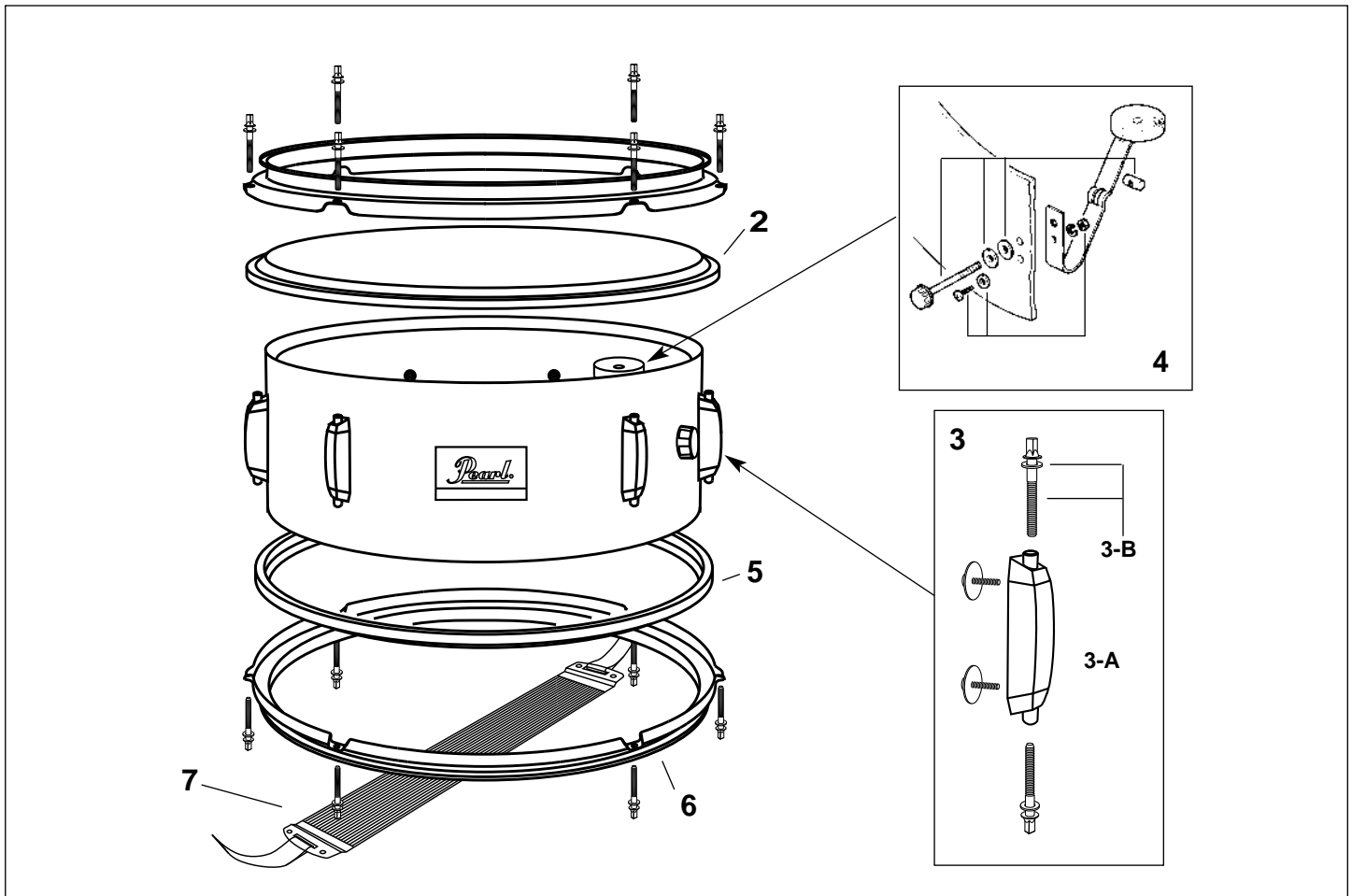
PK-750 PK-600 Percussion Kits

- 1 PKB10 Bell Section Complete
- 1-A PKB1A Music Rack
- 1-B PKB1B Set Screws for Bell w/Rubber Cap
- 2 PAD8R Tunable Practice Pad
- 3 PK-60A Upper Tube Assy. Bell Stand
- 4 S-65LB Base Assy.
- 5 PKC75 Molded Plastic Carrying Case
- 6 PKB5 Backpack Style Carrying Case

- 3-A KBH-1 Tension Screw and Lock Nut
- 3-A-1 DC-367 Lock Nut
- 3-A-2 NP-183 Tension Nut

- 4-A DJ-55A Die-Cast Joint w/Hardware
- 4-B M-815N/6 Wing Bolt- 6 pack
- 4-C NP-12/3 Rubber Feet- 3 pack

Learning Center

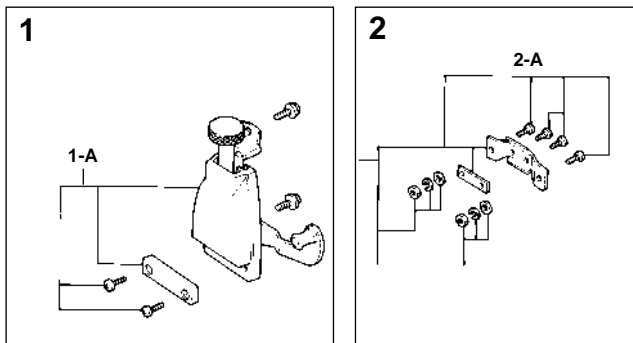


JR-313 Snare Drum (for PL-600)

- | | | | | | |
|-----|-----------|---------------------------|---|-----------|------------------------------|
| 1 | RIM-1306B | 6 Rod Batter Side Hoop | 5 | ST13 | Head for Snare Side 13" |
| 2 | WA13 | Head for Batter Side 13" | 6 | RIM-1306S | 6 Rod Snare Side Hoop |
| 3-B | T-062 | Tension Key Bolt w/Washer | 7 | S029N | Snare Wires w/Plastic Straps |
| 3-A | R25 | Lug w/Screws | | | |
| 4 | 734 | Inside Muffle | | | |

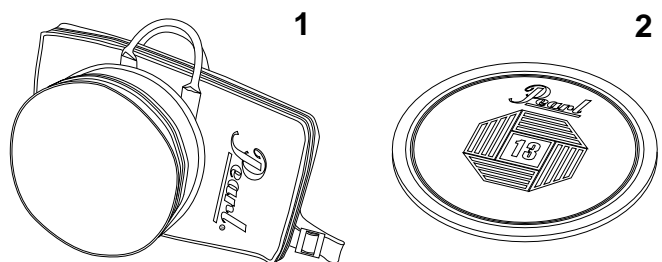
S-014N Strainer (for JR-313)

- | | | |
|-----|---------|-------------------------------|
| 1 | S-14NRA | Release Side Assy. Complete |
| 1-A | S-14B | Snare Mounting Plate w/Screws |
| 2 | S-14BA | Butt Side Assy. Complete |
| 2-A | S-14D | Snare Mounting Plate w/Screws |

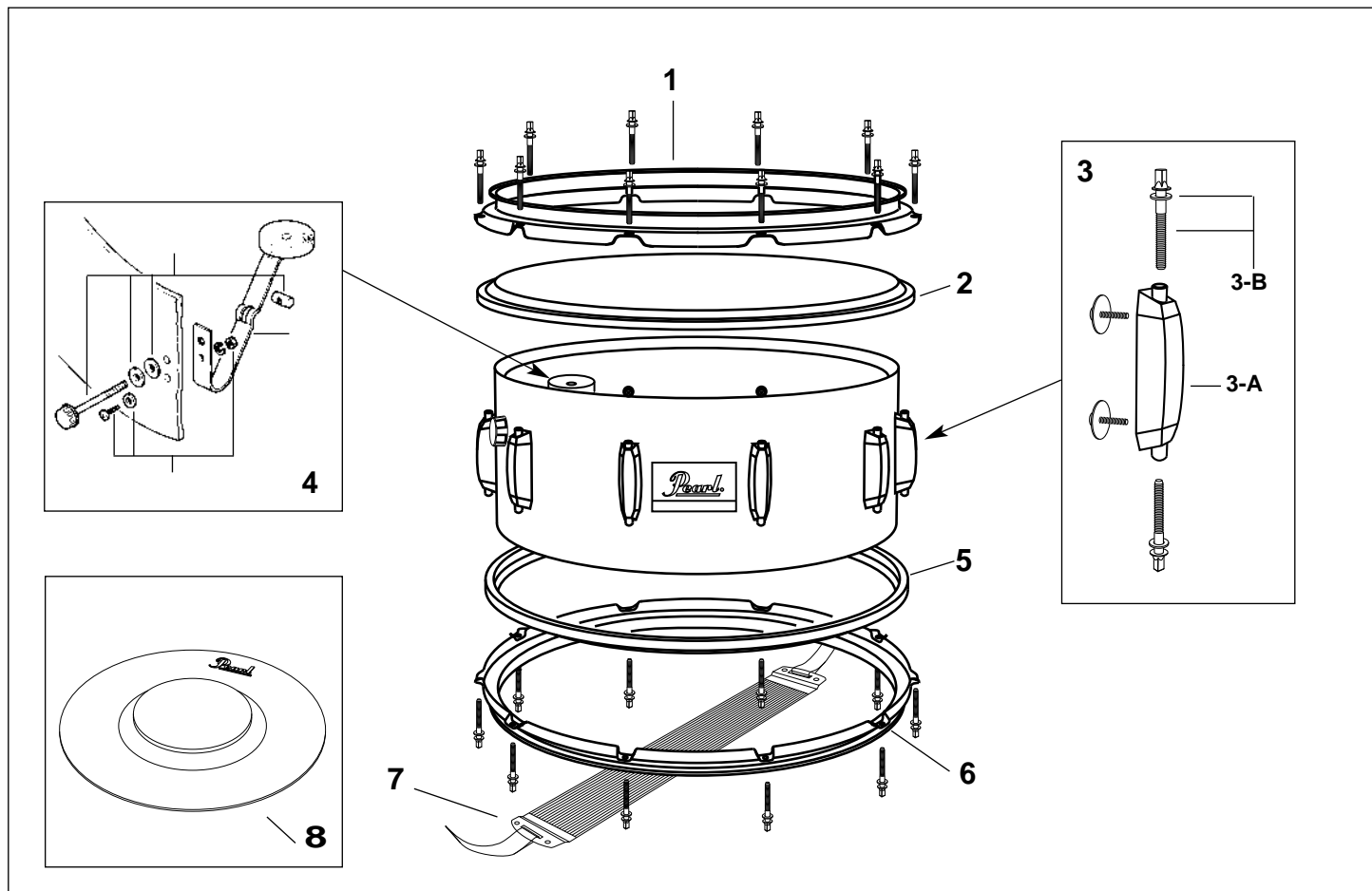


Carrying Case (for PL-600)

- | | | |
|---|-------|------------------------------------|
| 1 | PLB-6 | Nylon Backpack Style Case (PL-600) |
| 2 | RP-13 | Rubber Practice Pad 13" |



Student Snare Kits

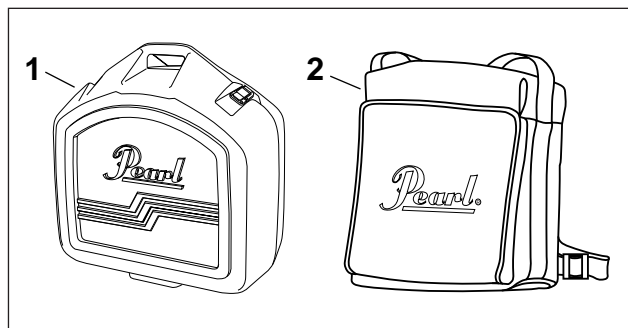


SK-614 Snare Drum (for SK-750 & SK700)

- 1 RIM-1410B Regular Hoop 14" Batter Side
- 2 WA14 14" Coated Batter
- 3-A R25 Regular Lug w/Screws
- 3-B T062 Tension Rod w/Washer
- 4 734 Inside Muffler
- 5 ST14 14" Clear Snare Side
- 6 RIM-1410S Regular Hoop 14" Snare Side
- 7 S-022 Snare Coire w/Straps
- 8 RPG14 Rubber Practice Pad 14"

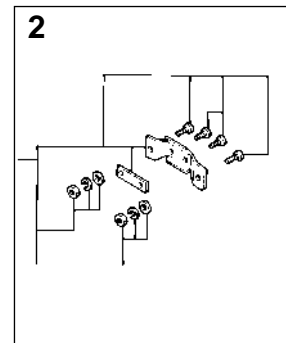
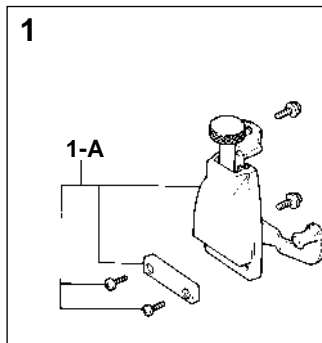
Available Carrying Cases

- 1 SKC75 Injection Molded Case (SK-750)
- 2 SKB7 Soft Square Backpack Case (SK-700)

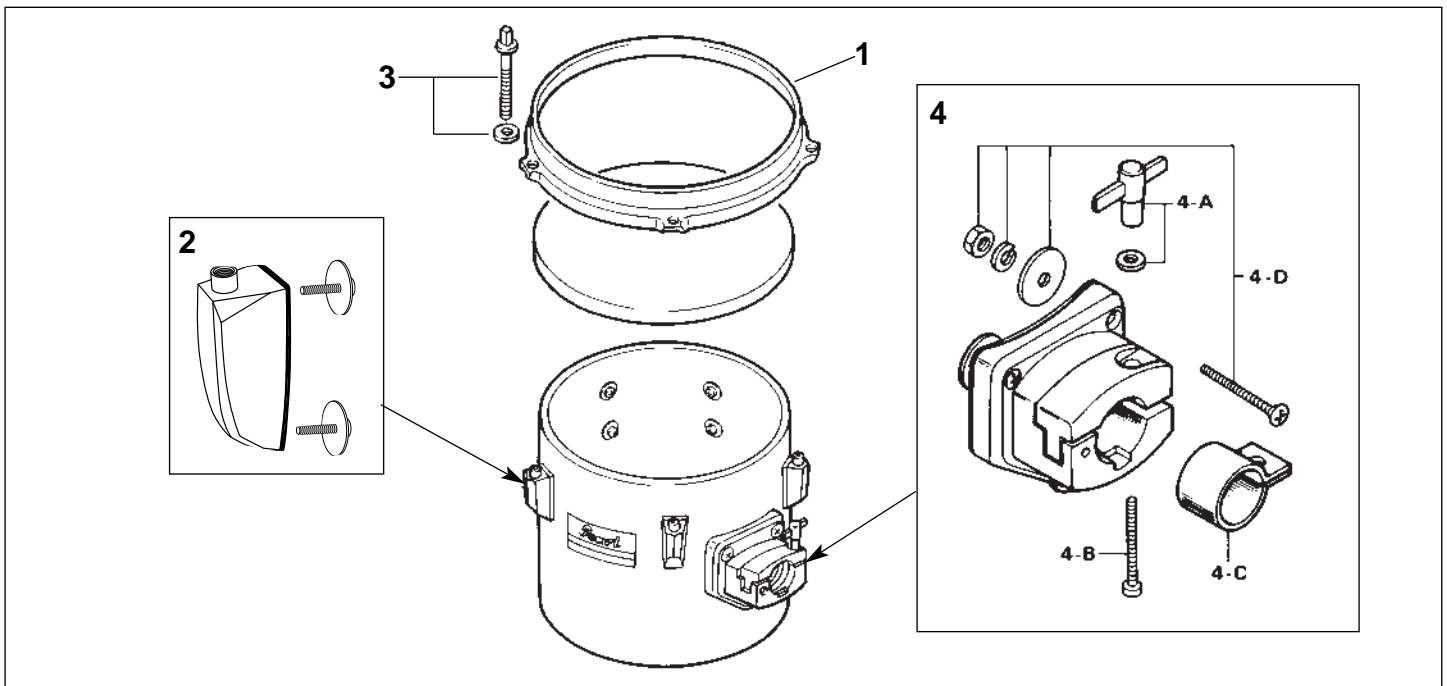


S-014N Strainer for SK-614 Snare Drum

- 1 S-14NRA Release side assy. complete
- 1-A S-14B Snare Mounting Plate w/Screws
- 2 S-14BA Butt Side Assy. Complete
- 2-A S-14D Snare Mounting Plate w/Screws

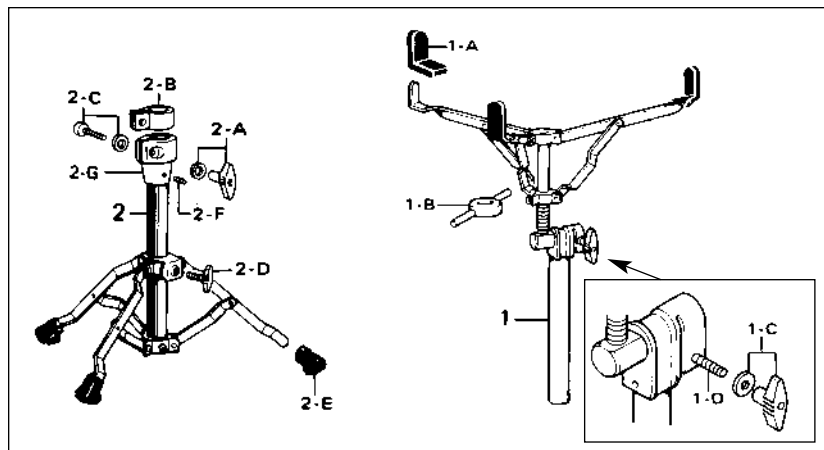


Concert Toms & Snare Stands



PCT / Concert Tom

1		Hoop	4-A	M-6M	Wing Nut w/Washer	4-E	BT-2B	Set Plate
2	RL-10	Lug w/Mounting Screws	4-B	SC-640	Clamp Bolt			
3	T-061	Tension Key Bolt w/Washer	4-C	NB-7N	Nylon Bushing			
4	BT-3	Tom Tom Bracket Assy.	4-D	T-MS	Mounting Screw, Washers & Nut (one each)			

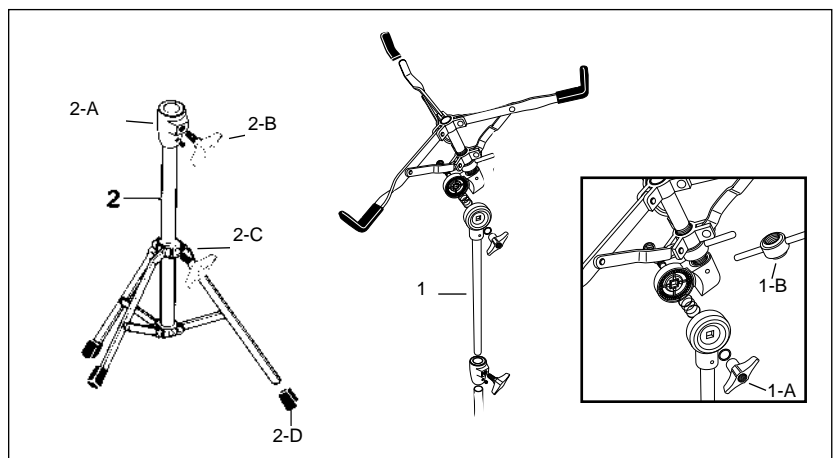


S-850L Snare Stand

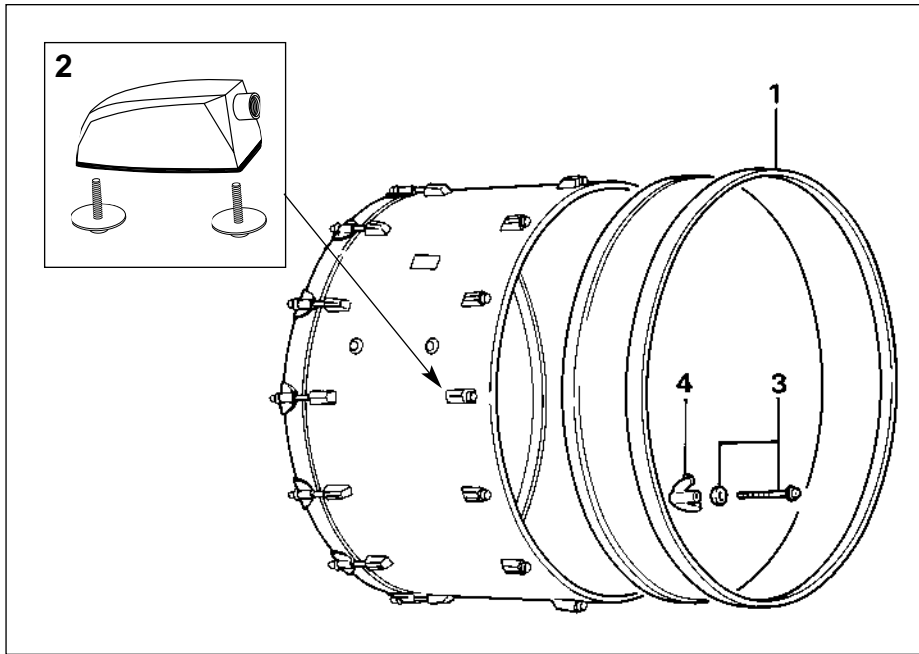
1	S-85LA	Basket Complete w/Upper Tube
1-A	S-85C	Rubber sleeve
1-B	S-85D	Center Handle Nut
1-C	M-6	Die Cast Wing Nut w/Washer
1-D	SC-640	Clamp Bolt
2	S-85LB	Base Assy. Complete
2-A	M-6	Die-Cast Wing Nut w/Washer
2-B	NB-7N	Nylon Bushing
2-C	SN-635	Clamp Bolt w/Nylon Washer
2-D	M-815	Die-Cast Wing Bolt
2-E	R-10	Rubber Tip
2-F	SB-44	Allen Screw
2-G	DJ-70A	Die-Cast Joint

S-700L Snare Stand for SK-700 / SK-750

1	S-70LA	Basket Complete w/Upper Tube
1-A	SN-800A	Bolt/Spring/Wing Nut Assy.
1-B	S-75D	Center Handle Nut
2	S-70LB	Base Assy. Complete
2-A	DJ-55	Pipe Joint
2-B	M-815N	Wing Bolt
2-C	M-820N	Clamp Bolt
2-D	NP-12	Rubber Tip

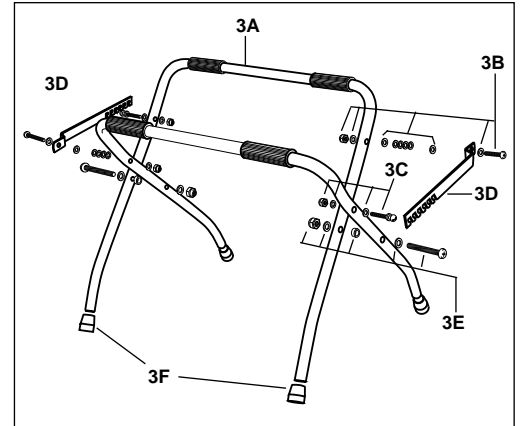


Concert Bass Drums/Stand



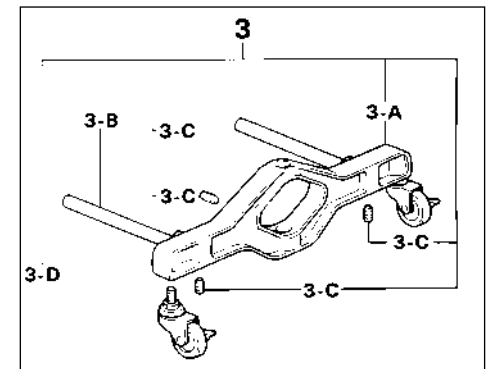
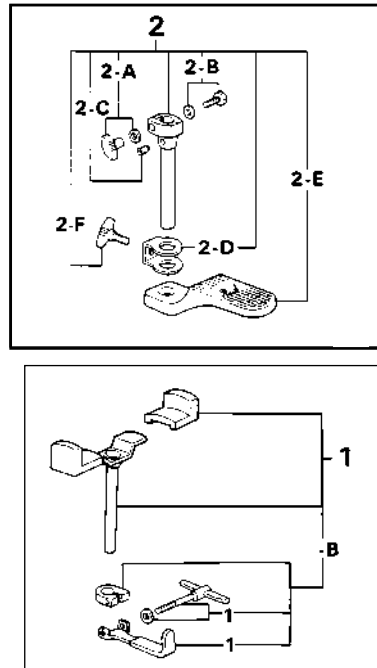
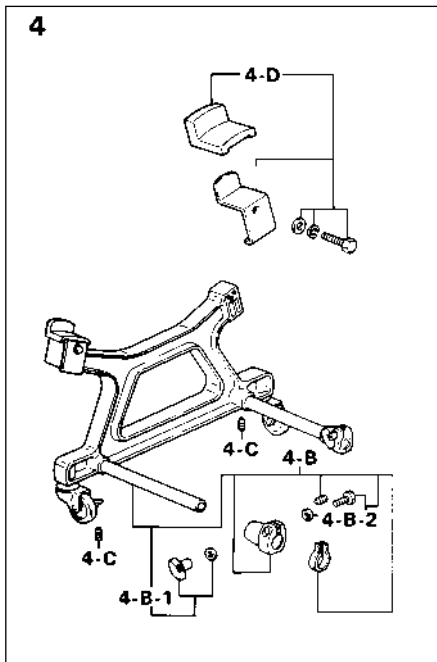
Concert Bass Drums

- | | |
|---|---------------------------------|
| 1 | See Hoops in Price List |
| 2 | RL-20 Lug w/Mounting Screws |
| 3 | T-066 Tension Key Bolt w/Washer |
| 4 | D-042 Tension Claw |



CBS-15 Bass Drum Stand

- | | | |
|----|----------|------------------------------|
| 3A | CBS-15BA | Tube w/Bumpers |
| 3B | CBS-15BW | Bolt & Nut |
| 3C | CBS-15FB | Bolt & Nut-Height Adjustment |
| 3D | CBS-15AJ | Adjustment Bar |
| 3E | CBS-155B | Center Bolt & Nut |
| 3F | TLY-IL | Rubber Foot |



CBS-35C Concert Bass Drum Stand

- | | | |
|-----|---------|-----------------------------------|
| 1 | CBU-1A | Upper Tube Assy. |
| 2 | CP-70AS | Tube Assy. Complete |
| 2-A | M6 | Die-Cast Wing Nut w/Washer |
| 2-B | SN-635 | Clamp Bolt w/Nylon Washer |
| 2-C | SB-44 | Allen Screw |
| 2-E | CBS-3FB | Footboard Only |
| 2-D | CBS-03B | Bracket for Footboard |
| 2-F | M-815 | Die-Cast Wing Bolt |
| 3 | CBS-4BA | Base Assy. Complete (Batter Side) |
| 3-A | CBS-4B | Base Only (Batter Side) |

- | | | |
|-------|---------|----------------------------|
| 3-C | SB-55 | Allen Screw |
| 3-B | CBS-4TU | Adjustment Tube |
| 3-D | CBS-1C | Caster |
| 4 | CBS-5BA | Base Assy. Complete |
| 5-A | CBS-5B | Base Only |
| 4 | CBS-5RA | Base Drum Receiver Assy. |
| 4-C | SB-55 | Allen Screw |
| 4-B-1 | M6 | Die-Cast Wing Nut w/Washer |
| 4-B-2 | SN-635 | Clamp Bolt w/Nylon Washer |
| 4-D | CBH-1A | Bass Drum Holder Assy. |

- | | | |
|-------|---------|----------------------------|
| 3-C | SB-55 | Allen Screw |
| 3-B | CBS-4TU | Adjustment Tube |
| 3-D | CBS-1C | Caster |
| 4 | CBS-5BA | Base Assy. Complete |
| 5-A | CBS-5B | Base Only |
| 4 | CBS-5RA | Base Drum Receiver Assy. |
| 4-C | SB-55 | Allen Screw |
| 4-B-1 | M6 | Die-Cast Wing Nut w/Washer |
| 4-B-2 | SN-635 | Clamp Bolt w/Nylon Washer |
| 4-D | CBH-1A | Bass Drum Holder Assy. |