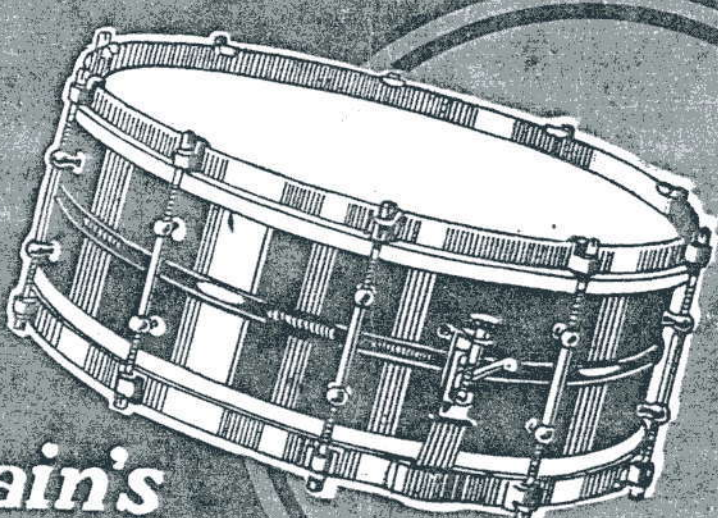


1927

Premier

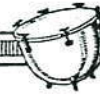
TRADE MARK



*Britain's
Finest
Drums.*



Premier



The Home of "Premier" Drums



The rapid development of Modern Music has demanded the utmost care and accuracy in the manufacture of instruments, and in the leading bands of the profession the importance of first-class Drums is fully recognised. Drummers' duties in these times are often highly involved and intricate, and consequently they need instruments that give them immediate response. In a word—Premier Drummers need "PREMIER" DRUMS.

It has always been the policy of the

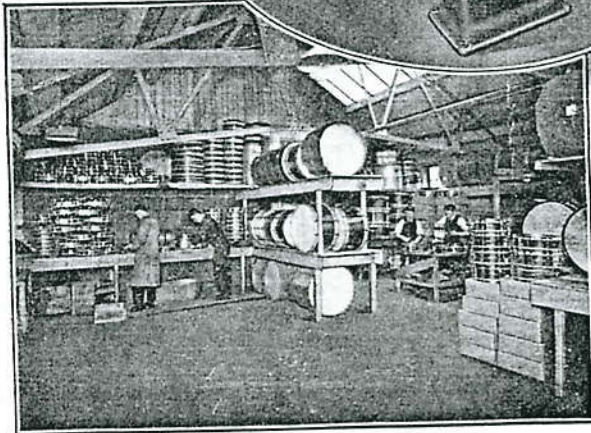
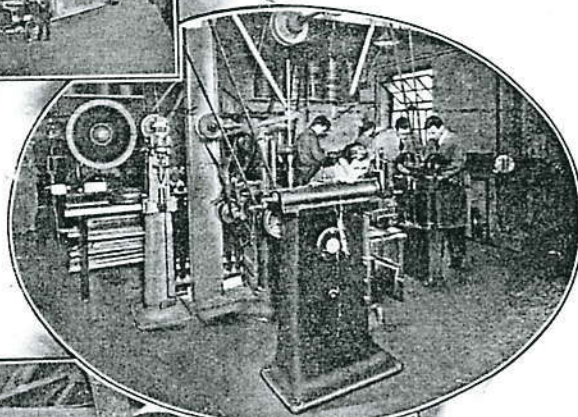
Premier Drum Company to manufacture Drums of the very highest order, and the phenomenal success which has attended their efforts can be gauged by the development of the business and the considerable extension of their factory during the past few years. The latter is now recognised as **THE LARGEST DRUM FACTORY**

IN EUROPE, the products of which are admittedly unsurpassed the world over.

Highly skilled craftsmen under the supervision of practical Drummers are engaged in the manufacturing processes, and only the very best materials are used; also every part is made on the premises.

In addition, great care is exercised in the important and delicate work of assembling.

A corner of the Machine Shop is illustrated on this page, also one of the Assembling Rooms.



PREMIER DRUM COMPANY,

64, Berwick Street, Oxford Street, LONDON, W. 1

Telephone: REGENT 3520.

Telegraphic Address: "PREDRUMCO, WESDO, LONDON."

Works: Silex Street, Friar Street, London, S.E. 1





FOREWORD

“Britain’s Finest Drums — The World’s Best”

THAT is the opinion of leading professional Drummers who use PREMIER Drums, and are overwhelmingly enthusiastic as to their superiority. This excellent reputation has been attained by our persistent efforts over a number of years in designing and developing the PREMIER standard in drums, aided by the outstanding fact that we ourselves are practical drummers. Controlling, as we do, the most important and most fully equipped percussion instrument factory in Europe, our purpose has always been to produce a Drum that is indeed the PREMIER in design, construction and finish, and no effort is spared in the accomplishment of this purpose. Therefore, every PREMIER Drum that leaves our Works can be absolutely relied upon to prove thoroughly worthy of the title—Britain’s Finest Drum.

We give personal service and attention to the requirements of the professional Drummer. We know that professionals must have the best, and it is our guarantee that no customer shall be disappointed. In dealing with us, you can rely on QUALITY, PERSONAL ATTENTION, and FAIR PLAY.

Guarantee Premier Drums, Tympani, and Accessories are guaranteed to be made only of the finest materials and to be of perfect workmanship; also to give complete satisfaction and lasting Service. We cannot, however, guarantee Drum Heads against breakage, owing to their liability to causes beyond the control of the manufacturer or dealer. Further, we cannot guarantee any goods manufactured abroad.

Any articles made SPECIALLY to order are not returnable for credit or exchange. This also applies to Xylophones, Orchestra Bells, etc.





Instructions for Ordering

The following points should be observed carefully when ordering:—ALWAYS QUOTE CATALOGUE NUMBER and MENTION "CATALOGUE E."

DRUMS are measured by the *width and diameter of the shell itself*. In measuring, note that the counter hoops are always ignored, also the over-all dimensions. The width (of the drum) is the distance from head to head, and the diameter is the distance across the drum shell.

DRUM RODS are designated by "shell width" only, not the over-all measurement, i.e., a 12in. rod indicates a rod for a shell 12in. wide. We make allowance for the counter hoops.

DRUM HEADS should be ordered by quoting the catalogue number and diameter of *Head*. Always state exact quality desired and whether for batter or snare side. On account of their destructible nature and liability to breakage under climatic conditions we do not guarantee Drum Heads. Drum Heads that have been soaked are not returnable for exchange or credit.

SPECIAL DRUMS AND ACCESSORIES cannot be undertaken by us. All our drums and accessories are made to standard PREMIER specifications which have been found to suit all practical requirements. We however reserve the right to alter our specifications without being under obligation to undertake these changes on any goods sold previous to such alterations.

REPAIRS AND PARTS are made for PREMIER goods only and carried out at the shortest notice. Give full description of the article. Drum Heads are lapped while you wait.

RETURN GOODS. All goods ordered from us which are not found satisfactory may be returned for credit and should be sent carriage paid. Mark your name and address plainly on the package and send full information separately by letter.

REMITTANCES. All payments should be made by cheque or postal order, payable to THE PREMIER DRUM CO., and crossed National Provincial Bank, Ltd.

TELEGRAMS should be confirmed by letter as speedily as possible.

IMPORTANT. *Do not fail to advise us of any change of address—we can then keep you posted with full information from time to time.*

OUR SERVICE TO YOU THROUGH DEALERS. We invite you to order through dealers wherever possible. We have Agents in every District who will give you prompt and efficient service. Upon application we will gladly furnish you with the name and address of the nearest "PREMIER" Agent. If for any reason you are unable to secure what you require in your own locality we will supply you direct.



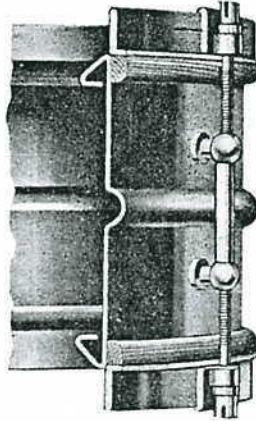


Constructional Details

Snare Drums

A very important feature of a first-class snare drum is that the shell must be strong enough to hold to a perfect round under the strain of the heads, and of tensioning. For durability and strength, PREMIER All-Metal Snare Drums are unsurpassed.

Our ONE PIECE SHELLS are of 20 gauge brass and are spun into shape, which ensures them being "dead" hard. THEY ARE GUARANTEED TO HOLD TO ROUND AND PERFECT SHAPE. You have only to examine the detail of the construction through the vent-hole to realise this. Special care has been taken to make the shell extra strong at those points where great strength is required. Note the large reinforcement at the outer edges and the centre strengthening bead.



The Flanged Hoops

Are nickel-plated on brass and will not rust. They can stand any amount of battering about, and help to preserve the heads of the drum from injury.

The "Premier" Snare Strainer

Is modelled so that the snares can be adjusted and thrown off from one fitting. By means of a locking lever device, the snares remain rigid when engaged, and cannot cross or get otherwise disarranged.

"Premier" Drum Key

A perfectly constructed flat drum key which does not fall off the rod when the hand lets go in turning. If the key is lost, you can use a coin.

Improved Method of Bass Drum Construction

The PREMIER method of constructing Bass Drums with a laminated shell (plywood construction) is on the most up-to-date and scientific lines, and ensures a Drum Shell of extreme strength. It is light in weight, immune to climatic changes, stands up against hard usage, and will hold to a *perfect round* and thus give the best tone. Statistics prove plywood to be THREE TIMES as strong as solid wood of the same thickness.

Trade Mark Labels



We use two Trade Mark Labels, as illustrated, for both PREMIER SNARE and BASS DRUMS. One is for PREMIER DE LUXE models, and the other for the POPULAR Models.

The PREMIER DE LUXE name-plate in black and silver indicates *the highest standard of quality in the World*, and is affixed to all our Professional De Luxe Models. Only the highest quality PREMIER Professional Models bear this label.



The Popular Models

Meet the demand for moderate-priced drums of substantial construction for general practical use, and bear a name-plate, also in Black and Silver. Although the prices of Popular model drums are so low, they are sold under the same guarantee as our "De Luxe" instruments.

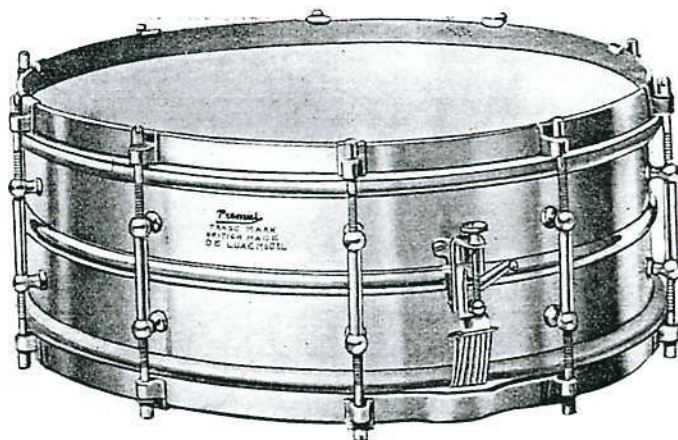
We reserve the right to alter the designs and/or wording of the above mentioned labels.





"Premier" De Luxé Model Snare Drum

All Metal—Separate Tension



We can say with definite assurance that this is the most dependable and serviceable drum on the market. This model is used by the majority of the leading professionals all over the country, it is the strongest and very best all-metal snare drum made. Many new and distinctive features are introduced—it is fitted with ten rods, new flanged type counter hoops and the perfect PREMIER Snare Strainer and Release. The snare bed is bevelled and acts as a guide for the snares in keeping them correctly centred and spaced. The heads are of the finest quality "PREMIER SUPER SLUNK." Wire covered silk snares are fitted as standard, but you have your choice.

Sizes and Numbers:

- | | |
|---------|-----------------------|
| No. 50. | 14-in. x 4-in. Shell. |
| No. 51. | 14-in. x 5-in. Shell. |
| No. 52. | 15-in. x 4-in. Shell. |
| No. 53. | 15-in. x 5-in. Shell. |

For further details of construction, see page 4. For special finishes, see pages 10 and 11.





Premier Drummers using "Premier" Drums



- | | |
|--|---|
| 1. Reg. Gubertini (<i>Selma Four</i>) | 11. Bobbie Tate (<i>Clifford Essex's Band</i>). |
| 2. Eric Little (<i>Jack Hylton's Kit-Cat Club Band</i>). | 12. Gwennie Davies (<i>Irene Davies' Dance Band</i>). |
| 3. Jack Gordon (<i>Jay Whidden and his Midnight Follies Band</i>). | 13. Hy. Bentley (<i>Teddy Brown's Palermo Band</i>). |
| 4. Ron. Gubertini (<i>Savoy Orpheans</i>). | 14. J. Rutherford (<i>The Happy Five</i>). |
| 5. Ralph Hussey (<i>Jack Hylton's Kettner's Band</i>). | 15. J. H. Plowman (<i>Ivor Noel's 12 Tango Musicians, etc.</i>) |
| 6. C. E. Harris (<i>Alfredo and his Band</i>). | 16. Sam Webber (<i>Metronomic Six</i>). |
| 7. Hy. Robbins (<i>Romaine Five</i>). | 17. Alf. Law (<i>Fred Haydon's Band</i>). |
| 8. Bob Manning (<i>Percival Mackey's Band</i>). | 18. F. B. Childe (<i>Cambridge University Dance Band</i>). |
| 9. Ivy Linde (<i>Eva Linde's Ladies Band</i>). | 19. Bernard Miller (<i>Jeffries' Rialto Band</i>). |
| 10. Percy Hampton (<i>Ten Cowboy Syncopators</i>). | 20. J. H. Leary (<i>Victor Vorzanger's Band</i>). |





“Premier” De Luxe Model Snare Drum

Wood Shell—Separate Tension



There are many drummers who prefer a wood shell drum; we have therefore built the model illustrated above, which is exactly the same as the PREMIER DE LUXE all-metal drum, but with a wood shell made of the best seasoned laminated wood. Compare this shell, with its thick supporting hoops, with any other make, and you will understand why we are proud of it.

Notice also the perfectly shaped snare bed and you will then know why the snares work so well and are never out of place. Wire covered silk snares are fitted as standard, but you have your choice.

Supplied in highly polished Walnut, beautifully hand burnished, with nickel plated hoops and tension rods.

Sizes and Numbers:

- | | |
|---------|-----------------------|
| No. 60. | 14-in. x 4-in. Shell. |
| No. 61. | 14-in. x 5-in. Shell. |
| No. 62. | 15-in. x 4-in. Shell. |
| No. 63. | 15-in. x 5-in. Shell. |

For Special Finishes, see pages 10 and 11.

Military Model

(with carrying hook)

This model, specially made for military and brass bands, is supplied with the very best vellums and gut snares which we select to suit the requirements of drummers in this class of band.

Quotations for special finishes on application.

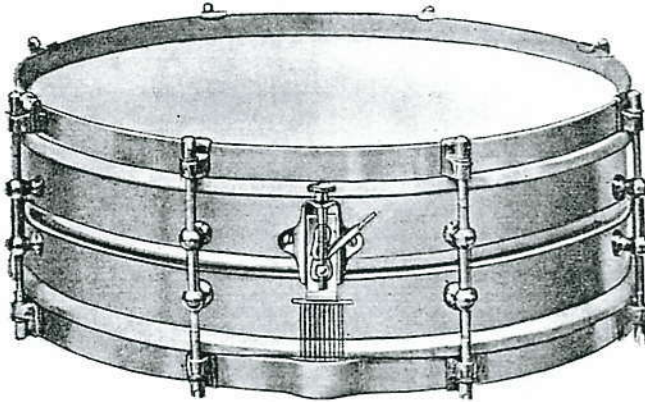
- | | |
|---------|------------------------|
| No. 68. | 15-in. x 10-in. Shell. |
| No. 69. | 15-in. x 12-in. Shell. |





“Premier” Popular Model Snare Drums

All Metal—Separate Tension



A new popular priced drum which appeals specially to those not requiring the PREMIER DE LUXE model, many features of which are nevertheless retained. It enables the drummer to obtain an all-metal shell of the same perfect construction as our best drum, at a moderate expense.

Fitted with 8 rods, with slot for easy tensioning, flat counter-hoops, selected Buck Heads, “Popular”

Snare Strainer, with all metal parts heavily nickel-plated to prevent rust. Wire covered Snares.

Sizes and Numbers:

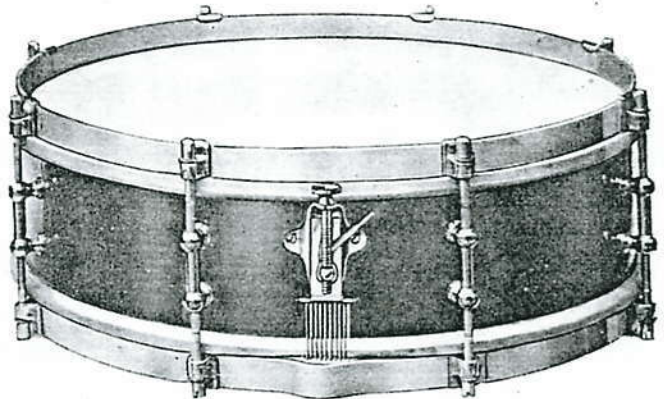
No. 80. 14-in. x 4-in. Shell.
No. 81. 14-in. x 5-in. Shell.

No. 82. 15-in. x 4-in. Shell.
No. 83. 15-in. x 5-in. Shell.

Wood Shell

For those who prefer a Wood Shell, being exactly similar to the drum illustrated above, except that the shell is of the best laminated wood, strongly supported to avoid the slightest possibility of warping.

Snare beds carefully and exactly shaped as in our “DE LUXE” model. Finished inst walnut only, with all metal parts heavily nickel-plated. Fine quality



Buck Heads, “Popular” Snare Strainer and wire covered snares.

Sizes and Numbers:

No. 86. 14-in. x 4-in. Shell.
No. 87. 14-in. x 5-in. Shell.

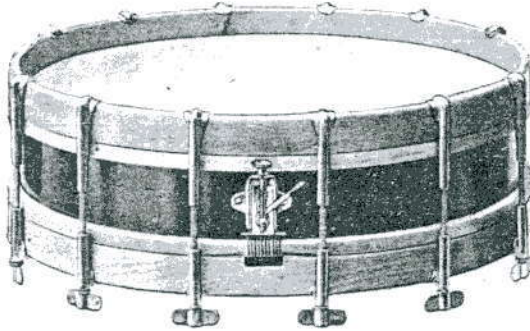
No. 88. 15-in. x 4-in. Shell.
No. 89. 15-in. x 5-in. Shell.





“Premier” Popular Model Snare Drum

All Wood—Thumbrod Fittings



A first-class single tension snare drum, very neat and efficient, equipped with nickel-plated thumb-screws, snare strainer and release. Our new pressed steel thumbscrew rods are a masterpiece of workmanship, and their strength is unequalled. The laminated shell is reinforced by two heavy inside supports, and the counter hoops are of the best well seasoned beech.

Snare fitting same as supplied on our Popular Separate Tension Drums described on the previous page.

Well finished in Walnut, with natural hoops to match our Bass Drums.

Sizes and Numbers :

No. 95. 14-in. x 3-in. Shell. 10 Rods.

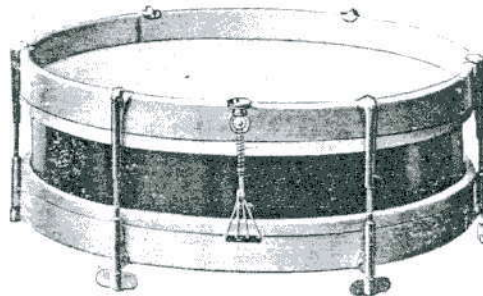
No. 96. 15-in. x 3-in. Shell. 12 Rods.

Junior Drum

Carefully made and assembled, and constructed of substantial materials.

Laminated shell, wire Snares and nickel plated fittings. A useful drum and very snappy.

No. 99. 12-in. x 3-in. Shell.



Popular Gong Drums—Single Sided

Neat in appearance and very light in weight. We have now included a 22-in. drum which is very popular for home use, although in no way a toy. Experience has proved that 22-in. is the smallest size drum that can be relied upon to produce a real good tone.

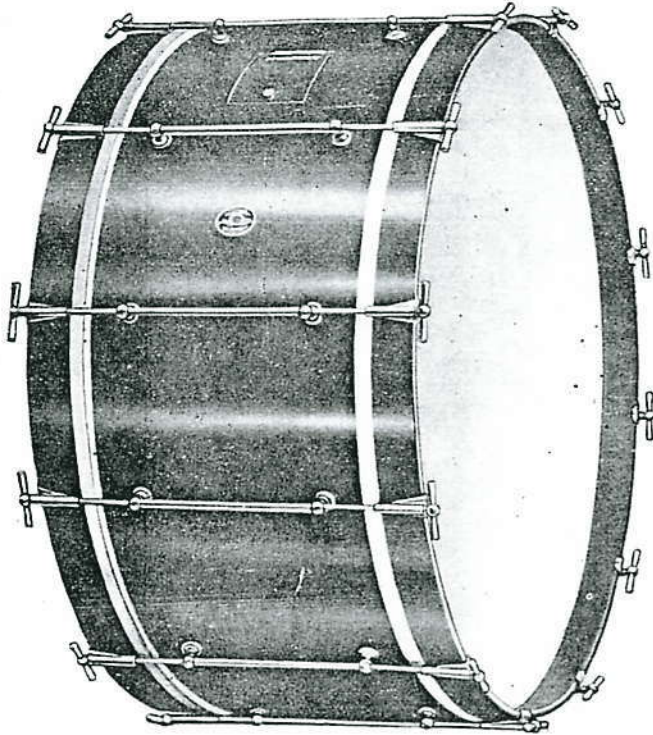
No. 215. 22-in. Shell.

No. 216. 24-in. Shell.

No. 217. 26-in. Shell.



"Premier" Super Finish Drums



Whilst we do not claim that PREMIER SUPER FINISH Drums improve your playing ability, there is no doubt at all that their fine appearance gives prestige and refinement to the Band, with a consequent increase in your earning power. The extraordinarily beautiful black or white finish is done by the same process as that employed on the best-class motor-car bodies, which, for its lasting qualities is unequalled.

The small extra cost on our DE LUXE Drums is accounted for by the additional hand-work necessary. It is this skilful hand work which has placed PREMIER SUPER FINISH Drums in the very foremost position for this class of instrument.

Our genuine gold plating is priced at the lowest figure commensurate with a quality which gives lasting satisfaction—it will not wear off when handled.

On this page we give details of our SUPER FINISH Drums in Black. Particulars of White Drums, and of Snare Drums gold-plated throughout, will be found on the next page.

Add "Super Finish" prices to cost of De Luxe Model Drum chosen.

Bass Drums

(De Luxe Models Only)

EBONY finished shell and hoops, nickel plated fittings.

B.1.

EBONY finished shell and hoops, Gold plated fittings.

B.2.

Snare Drums

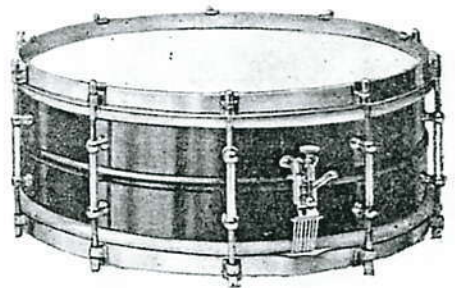
(De Luxe Models Only)

EBONY finished shell, nickel plated rims and fittings.

B.3.

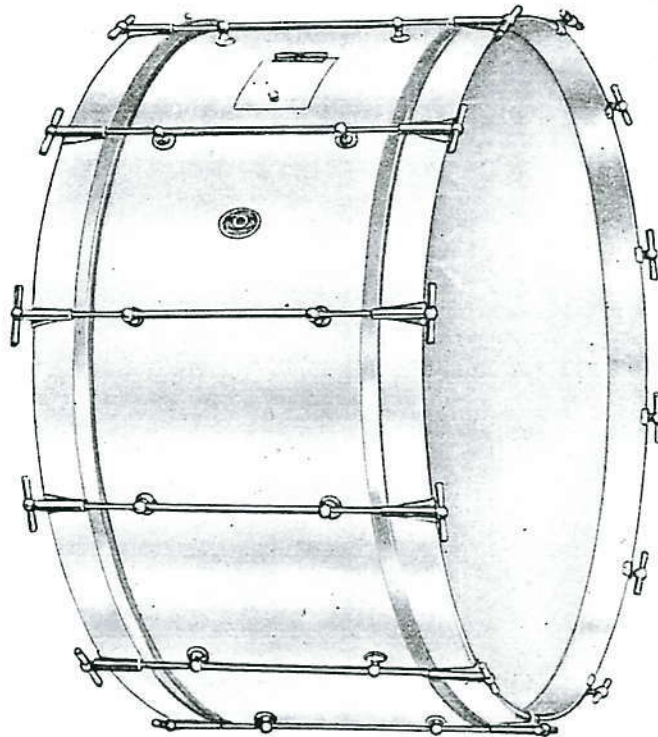
EBONY finished shell, Gold plated rims and fittings.

B.4.





"Premier" Super Finish Drums



On the previous page will be found full particulars of PREMIER SUPER FINISH Drums with details of the models finished in EBONY. If you prefer IVORY make your choice from the list on this page. We also include below the PREMIER DE LUXE S.T. All Metal Snare Drum, gold plated throughout. Foremost drummers in this country have already recognised, in a practical manner, the value of the SUPER FINISHES mentioned on this and the previous page. The following members of leading British Bands are amongst recent PURCHASERS of PREMIER Super Finish Drums:—

Bass Drums

(De Luxe Models Only)

IVORY finished shell and hoops, Nickel plated fittings.

No. W.1.

IVORY finished shell and hoops, Gold plated fittings.

No. W.2.

Snare Drums

(De Luxe Models Only)

IVORY finished shell, Nickel plated rims and fittings.

No. W.3.

IVORY finished shell, Gold plated rims and fittings.

No. W.4.

GOLD PLATED throughout.

No. G.1. (Nos. 50 to 53 only).

Trap Tray for B.D.

PLUSH covered trimmed with gold or silver braid as desired. Complete with special attachment for Bass Drum. No. 694.

Jack Gordon—Jay Whidden & His Midnight Follies Band
 Ron. Gubertini—The Savoy Orpheans
 Reg. Gubertini—The Selma Four
 C. E. Harris—Alfredo's Band
 L. Huntington—Savoy Havana Band
 Eric Little—Hylton's Kit-Cat Club Band
 Bob Manning—Percival Mackey's Band
 Bernard Miller—Jeffries' Rialto Band
 Etc., etc.





Paintings for Bass Drums



Our paintings are really artistic and effective, and undoubtedly improve the appearance of a Band to a marked degree.

Prices are for the painting only—head not included.

We do not supply painted heads unless on drum.

The above paintings are only specimens—we can supply any scenes desired.

Send us your sample or idea and we will quote per return.

- No. 100. Silhouette.
- No. 101. Silhouette in colours.
- No. 102. Venetian Scene in colours.
- No. 103. Dancing Girl in colours.

Lettering on Bass Drums

We can do hand lettering on Bass Drum heads in either one or two colours in any style desired, but only if supplied on drum. When ordering, state colour and style of lettering required.

- No. 108. In one colour.
- No. 109. In two colours.





"Premier" De Luxe Model Bass Drums

Separate Tension—Tympani Rods



*Finished in Walnut Shell
with natural counter-hoops*

The PREMIER Separate Tension Bass Drum has many advantages over the single tension model, and we therefore unhesitatingly recommend it as without equal, being the very best obtainable and a triumph of British Craftsmanship. Separate tension enables both heads to be brought to the same pitch, thus producing the greatest volume of correct Bass Drum tone. Another advantage if you have a Separate Tension Drum is that you can never get stuck on a "job" through a broken head, for with one tight head the tone will be quite good; also, the appearance of the drum is most impressive.

The PREMIER DE LUXE Bass Drum has a laminated shell which, with its heavy inside supports is much stronger and more durable than any other shell on the market.

A feature is the beautiful finish which is obtained by the latest process of "spray" polishing and much hand-finishing work. Another feature is the tympani model fittings, which are now supplied at no extra cost: they are a perfect *MACHINED* job—not the stamped-out type.

Needless to say, only the finest PREMIER White Calf Heads are supplied, and a neat trap-door is fitted for electric light.

Sizes and Numbers—

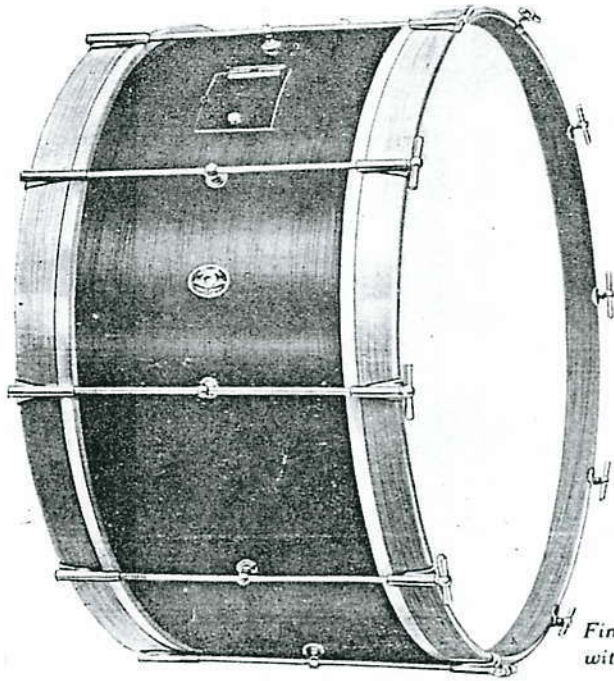
No. 120. 26-in. x 9-in. Shell, 10 Rods.	No. 126. 30-in. x 12-in. Shell, 12 Rods.
No. 121. 26-in. x 12-in. " "	No. 127. 30-in. x 15-in. " "
No. 122. 28-in. x 9-in. Shell, 12 Rods.	No. 128. 30-in. x 18-in. " "
No. 123. 28-in. x 12-in. " "	No. 129. 32-in. x 15-in. " "
No. 124. 28-in. x 15-in. " "	No. 130. 32-in. x 18-in. " "
No. 125. 28-in. x 18-in. " "	No. 131. 32-in. x 21-in. " "

For special finishes, see pages 10 and 11.



"Premier" De Luxe Model Bass Drums

Single Tension—Tympani Rods



*Finished in Walnut Shell
with natural counter-hoops*

This is a very popular Bass Drum for general professional work, and it is admittedly the leading single tension drum for tone, wear, appearance and quality throughout.

It is made to stand any amount of rough usage, and is suited for practically every requirement. In construction—excepting the fittings—it is exactly the same as the PREMIER De Luxe Separate Tension Model, and is thus far superior to any other similar drum manufactured. Tympani handle rods and perfect threads make tensioning fast and easy.

Fitted with centre supports and a neat trap door for electric light, and equipped with the finest grade PREMIER White Calf Vellums, you will find this drum very excellent and one to be proud of.

Sizes and Numbers :

No. 145.	24-in. x 8-in. Shell,	8 Rods.	No. 148.	28-in. x 9-in. Shell,	12 Rods.
No. 146.	26-in. x 9-in. Shell,	10 Rods.	No. 149.	28-in. x 12-in. Shell,	12 Rods.
No. 147.	26-in. x 12-in. Shell,	10 Rods.	No. 150.	30-in. x 12-in. Shell,	12 Rods.

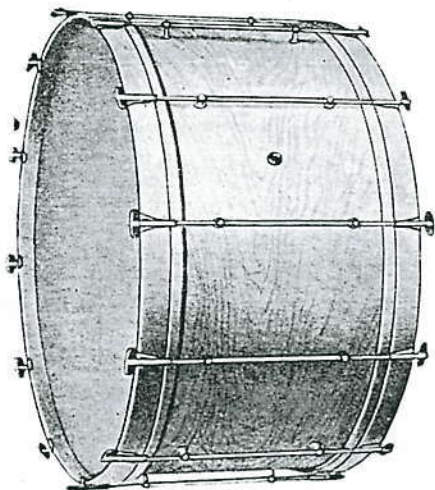
For special finishes see pages 10 and 11.





Popular Model Bass Drums

Separate Tension



One of our "Popular" Bass Drums that meets the demand for a good Drum for practical use and obtainable at a lower cost than the PREMIER DE LUXE models.

Whilst these drums have not the beautiful finish of our De Luxe type, they are strongly built and carefully assembled.

Equipped with high quality Buck heads of good appearance, and the strongest type of pressed steel nickel plated fittings.

Very pleasingly finished in walnut with natural hoops.

Sizes and Numbers :

No. 170.	26-in. x 9-in. Shell, 10 rods.
No. 171.	26-in. x 12-in. Shell, 10 rods.
No. 172.	28-in. x 9-in. Shell, 12 rods.
No. 173.	28-in. x 12-in. Shell, 12 rods.
No. 174.	28-in. x 15-in. Shell, 12 rods.
No. 175.	30-in. x 12-in. Shell, 12 rods.
No. 176.	30-in. x 15-in. Shell, 12 rods.

Single Tension

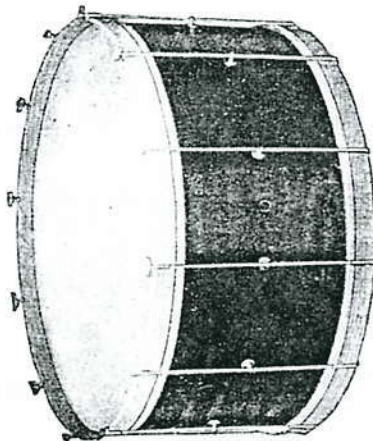
A popular priced Bass Drum, efficient and very serviceable, fitted with strong, nickel plated, pressed steel fittings, with centre supports. Equipped with high grade Buck Vellums of very good appearance.

Of the usual sound PREMIER construction, this drum is far superior to any other on the market at the same price.

Well finished in walnut shell with natural counter hoops.

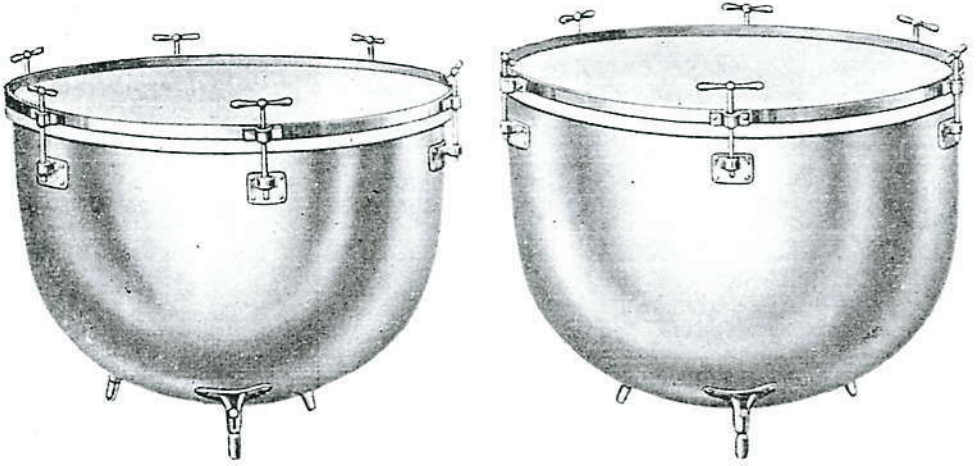
Sizes and Numbers :

No. 190.	24-in. x 8-in. Shell, 8 rods.
No. 191.	26-in. x 9-in. Shell, 10 rods.
No. 192.	26-in. x 12-in. Shell, 10 rods.
No. 193.	28-in. x 9-in. Shell, 12 rods.
No. 194.	28-in. x 12-in. Shell, 12 rods.
No. 195.	30-in. x 12-in. Shell, 12 rods.





“Premier” De Luxe Model Tympani



THE PREMIER DE LUXE Hand Screw Tympani have been gaining in popularity for many years, and now lead all others for this type of instrument, having met with the unqualified approval of Symphony and other Tympanists all over the British Isles. Made of the very best materials procurable, and built by men experienced in the art of Tympani making, their tone is beautiful and rich, their strength undoubted, and they are very well finished.

Every part is British made in our own Factory, and unequalled the world over.

The Kettles are of hand-hammered copper, and are equipped with Six heavy and perfectly threaded fittings and steel counter-hoops, which are beautifully nickel-plated on copper. The handles turn with the greatest ease, so that difficult tuning can be accomplished at lightning speed. Every mechanical part is interchangeable.

N.P. Sliding adjustable legs, and specially selected PREMIER White Calf Tympani Heads.

No. 225. 22 ins. and 25 ins.

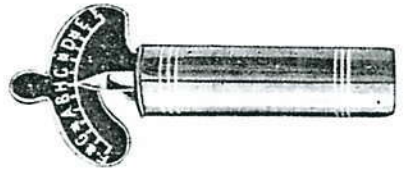
No. 226. 25 „ „ 28 „

Prices of special finishes on request.

Pitch Pipe

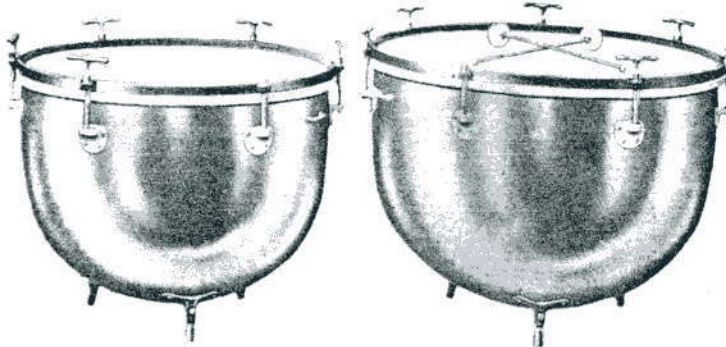
A very handy instrument which is indispensable to the beginner.

Exceptionally well finished and nickel-plated.
Chromatic from F to F. No. 538.





“Premier” Popular Model Tympani



A popular model Tympani embodying all the features necessary for the drummer to equip himself with a high-grade Tympani at a low cost. The tuning system is very efficient, and the handles turn with great ease. Each drum has six fittings.

The Kettles are manufactured by the same method as the higher-priced models and are strongly reinforced, so that no buckling can occur and a perfect round is assuredly maintained. The rims and sliding adjustable legs are pleasingly enamelled in dark blue, the handles and brackets being well nickel-plated.

All parts are interchangeable and can be re-ordered at any time.

PREMIER White Calf Heads.

No. 235.	22 ins. and 25 ins.
No. 236.	25 „ „ 28 „



Tympani Covers

A neat substantial waterproof mackintosh cloth, on a plywood foundation; tightens with cord, and will adequately protect your Tympani.

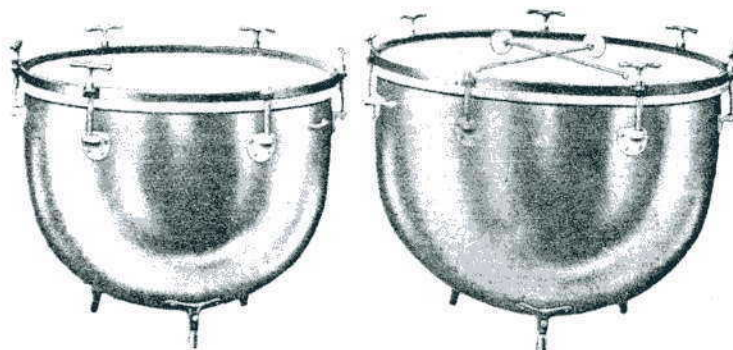
No. 245.	For 22-in. Tympani
No. 246.	„ 25-in. „
No. 247.	„ 28-in. „

Tympani Cases

Strong, serviceable English Cabin Trunks with metal corners, one strap across. Can be absolutely depended upon. The exact trunk for the travelling tympanist. State sizes of instruments. No. 249.



“Premier” Popular Model Tympani



A popular model Tympani embodying all the features necessary for the drummer to equip himself with a high-grade Tympani at a low cost. The tuning system is very efficient, and the handles turn with great ease. Each drum has six fittings.

The Kettles are manufactured by the same method as the higher-priced models and are strongly reinforced, so that no buckling can occur and a perfect round is assuredly maintained. The rims and sliding adjustable legs are pleasingly enamelled in dark blue, the handles and brackets being well nickel-plated.

All parts are interchangeable and can be re-ordered at any time.

PREMIER White Calf Heads.

No. 235.	22 ins. and 25 ins.
No. 236.	25 „ „ 28 „



Tympani Covers

A neat substantial waterproof mackintosh cloth, on a plywood foundation; tightens with cord, and will adequately protect your Tympani.

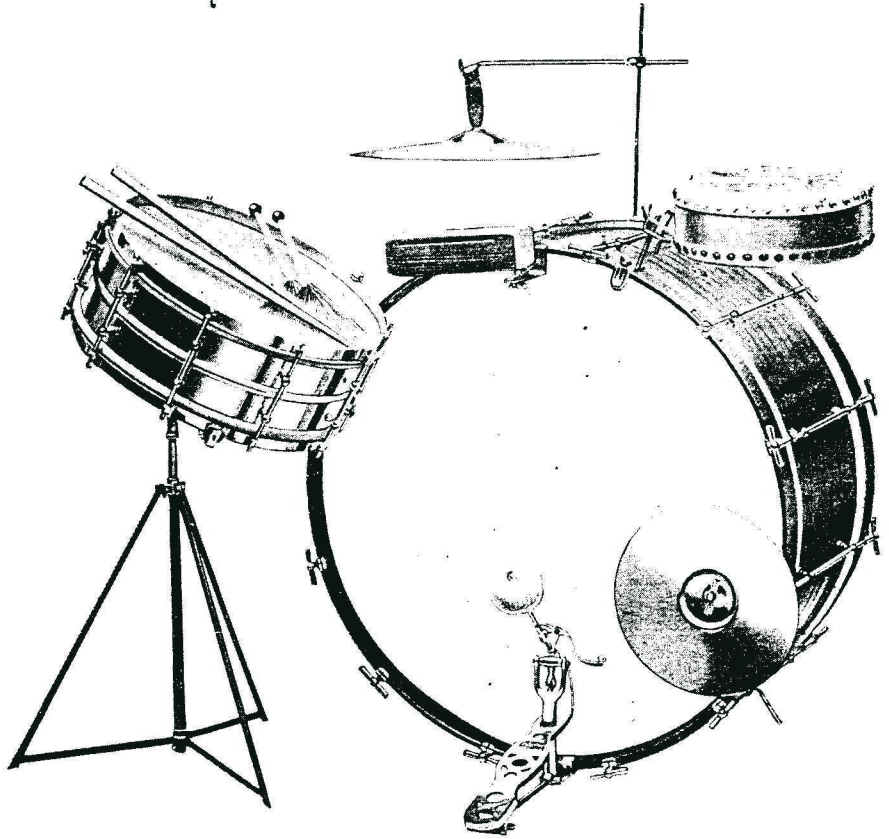
No. 245.	For 22-in. Tympani
No. 246.	„ 25-in. „
No. 247.	„ 28-in. „

Tympani Cases

Strong, serviceable English Cabin Trunks with metal corners, one strap across. Can be absolutely depended upon. The exact trunk for the travelling tympanist. State sizes of instruments. No. 249.



“Premier” De Luxe Outfit



THE PREMIER DE LUXE OUTFIT is a combination of the very best of our products, and we are certain that a better assembly could not be obtained. The workmanship, quality and appearance are perfect in every way.

Details of individual items appear under their respective headings.

Our idea is to standardise this outfit, making it suitable for many classes of work, but other effects for your own particular requirements can be added as desired.

CONTENTS.

(No substitutions or omissions)

28-in. × 12-in. Shl. De Luxe Model B.D.—Separate Tension, Tympani Handles. 15-in. × 4-in. De Luxe Model all-metal S.D.—Separate Tension. Premier Heavyweight Folding Snare Drum Stand. Premier De Luxe Pedal complete with spurs and cymbal holder. 14-in. Imit. Turkish Cymbal. 10-in. Hammered Pedal Cymbal. “Holdfast” Cymbal Suspender. 10-in. Genuine Chinese Tom-Tom. “Holdfast” Tom-Tom Holder. Chinese Wood Block. “Holdfast” Wood Block Holder. Two-in-one S.D. Sticks. Pair Wire Brushes.

No. 260. DE LUXE OUTFIT.

No. 261. DE LUXE OUTFIT complete with B.D. cover and strap and S.D. and effects case.





“Premier” Popular Outfit



The PREMIER POPULAR OUTFIT is a good-class turnout at a very low price, and is absolutely IDEAL for the dance drummer who requires a light, yet very strong kit. Specially arranged, suitable for “gig” drummers. It is quite complete in itself, although extra effects can, of course, be added as desired.

CONTENTS.

(No substitutions or omissions)

26-in. × 9-in. Shl. Popular Model B.D.—Single Tension. 14-in. × 4-in. Popular Model S.D.—Separate Tension, Wood Shl. Popular Snare Drum Stand. Popular Pedal, complete with spurs and cymbal holder. 14-in. Chinese Crash Cymbal. 10-in. Pedal Cymbal. “Holdfast” Cymbal Suspender. Chinese Wood Block. “Holdfast” Wood Block Holder. Pair Hickory S.D. Sticks.

No. 262. POPULAR OUTFIT.

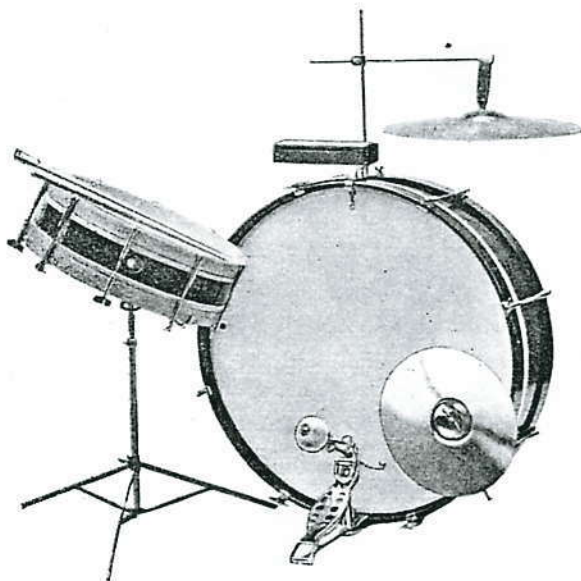
No. 263. POPULAR OUTFIT. Complete with B.D. cover and strap, and S.D. and effects case.





"Premier" Progressive Outfit

A first-class outfit which is just the thing for the small dance orchestra or the amateur. Better value is unobtainable anywhere. Tone quality, the PREMIER standard of high-class workmanship, strength and compactness are the features that stand out.



CONTENTS.

(No substitutions or omissions)

- 26-in. Popular Model Gong Drum.
- 14-in. x 3-in. Popular Model Thumbrod S.D.
- Junior S.D. Stand.
- Popular Pedal, complete with Spurs and Pedal Cymbal Holder.
- 10-in. Spun Brass Pedal Cymbal.
- 14-in. Spun Brass Crash Cymbal.
- Popular Cymbal Suspender.
- Double Slot Polished Oak Wood Block.
- Popular Wood Block Holder.
- Pair Hickory Sticks.

No. 264. PROGRESSIVE OUTFIT.

No. 265. PROGRESSIVE OUTFIT—complete with best quality Gong Drum Cover.

"Premier" Junior Outfit.

A complete juvenile outfit very suitable for home use. It is not a toy but is practical in every way. This kit will readily commend itself to the many professionals who desire a sensible outfit on which their children can learn the first steps in drumming. Needless to say only the best materials are used. Without doubt, the biggest bargain kit ever assembled.

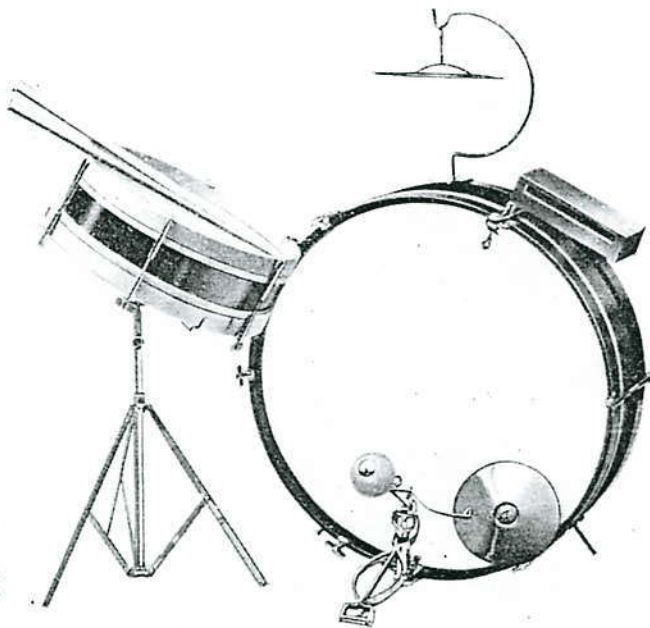
CONTENTS.

(No substitutions or omissions)

- 22-in. Popular Model Gong Drum.
- 12-in. x 3-in. Junior Snare Drum.
- Junior Direct Stroke Pedal, complete with Spurs and Pedal Cymbal Holder.
- 13-in. Spun Brass Cymbal.
- 6-in. Pedal Cymbal.
- Junior Cymbal Suspender.
- Single Slot Wood Block.
- Wood Block Holder.
- Snare Drum Holder.
- Pair Sticks

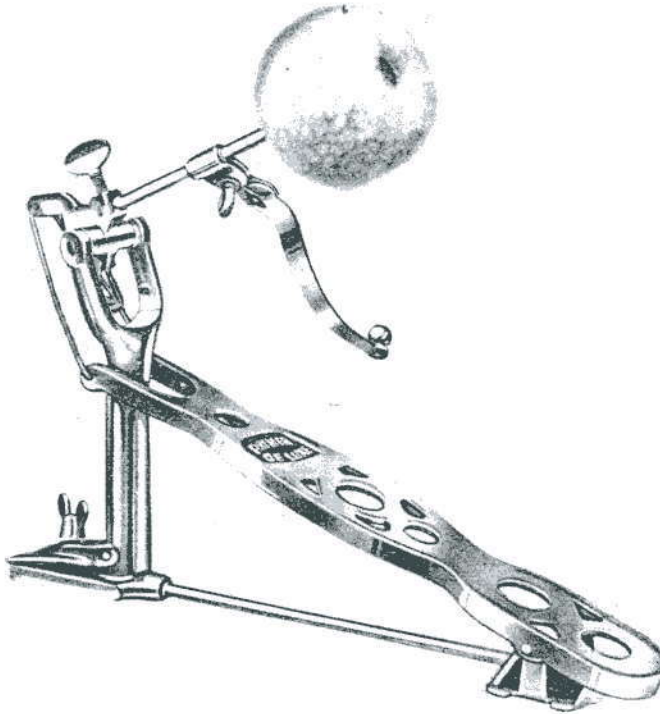
No. 266. JUNIOR OUTFIT—(as above specification).

No. 267. JUNIOR OUTFIT—as illustrated (with Junior Snare Drum Stand).





"Premier" De Luxe Direct Stroke Pedal



The PREMIER Direct Stroke Pedal is mechanically and scientifically correct in every detail. Such troubles as wobbling, friction and side play, are entirely eliminated, as all parts work on a direct line from the centre, resulting in perfect balance, minimum effort, unlimited speed, and no lost motion.

Fitted with large lambswool head, adjustable beater, spring and cymbal striker; this pedal produces the best drum tone and has no equal.

The foot-plate is long enough to take the whole foot; this is a big factor in making the pedal smooth and restful in action, and tireless for the foot. You can accelerate or quicken the beat in an instant.

The cymbal striker can be thrown on or off with an easy touch of the finger.

This pedal is unquestionably the "Premier" of all Pedals on the market. Heavily nickel-plated.

No. 280. Complete. No. 281. Pedal only.

Pedal Parts

No. 281a. Spring.	No. 281c. Crank.	No. 281e. Wingnut.
No. 281b. Footplate.	No. 281d. Wire Loop.	No. 281f. Thumbscrew.

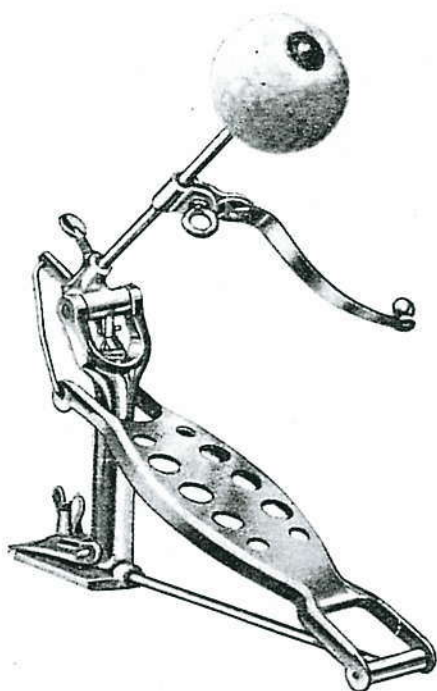
No. 293. Lambswool Beater (*see page 23*).





“Premier” Popular Pedal

Direct Stroke



A popular priced pedal in great demand. It serves every purpose and operates with rapidity and ease of action; is considerably lighter than our best model but is substantially constructed, well plated and thoroughly reliable. Fitted with an adjuster and supplied with best quality felt beater.

When a really good pedal at a low price is required, this is undoubtedly the one to choose for value.

- No. 283. Pedal complete.
- No. 284. Pedal only.

PARTS—

- No. 284a. Spring.
- No. 284b. Footplate.
- No. 284c. Crank.
- No. 284d. Wire Loop.
- No. 284e. Wingnut.
- No. 284f. Thumbscrew.
- No. 294. Felt Beater.

Collapsible Spurs

These have been designed for the convenience of drummers.

They screw to the rim of the drum and once in position, open and close like a penknife.

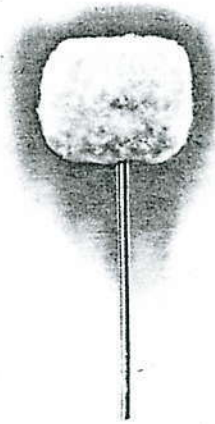
Heavily nickel-plated and supplied with screws for fixing.

No. 290.





Pedal Accessories



Lambswool Pedal Beater

The best Beater for producing real Bass Drum tone. Made of lambswool covered on felt.

Complete with stick.
No. 293.

Felt Pedal Beater

Of best quality solid felt.
Complete with stick.
No. 294.

"Premier" Spurs

Best heavy quality. Nickel plated mild steel.
No. 291.



"Premier" Hold-Fast Pedal Cymbal Holder

A perfect Cymbal Holder which grips and stays there. No. 295.

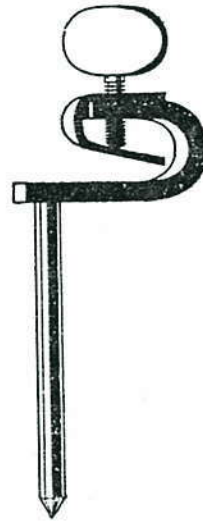


Popular Pedal Cymbal Holder

A low priced, but efficient pedal cymbal holder.
No. 296.

Cymbal Striker

The PREMIER Cymbal Striker is a pressed steel stamping, which ensures lightness, and is at the same time strong and rigid. Can be thrown on or off with an easy touch of the finger. No. 298.



Popular Spurs

Nickel plated mild steel
(as illustrated). No. 292.

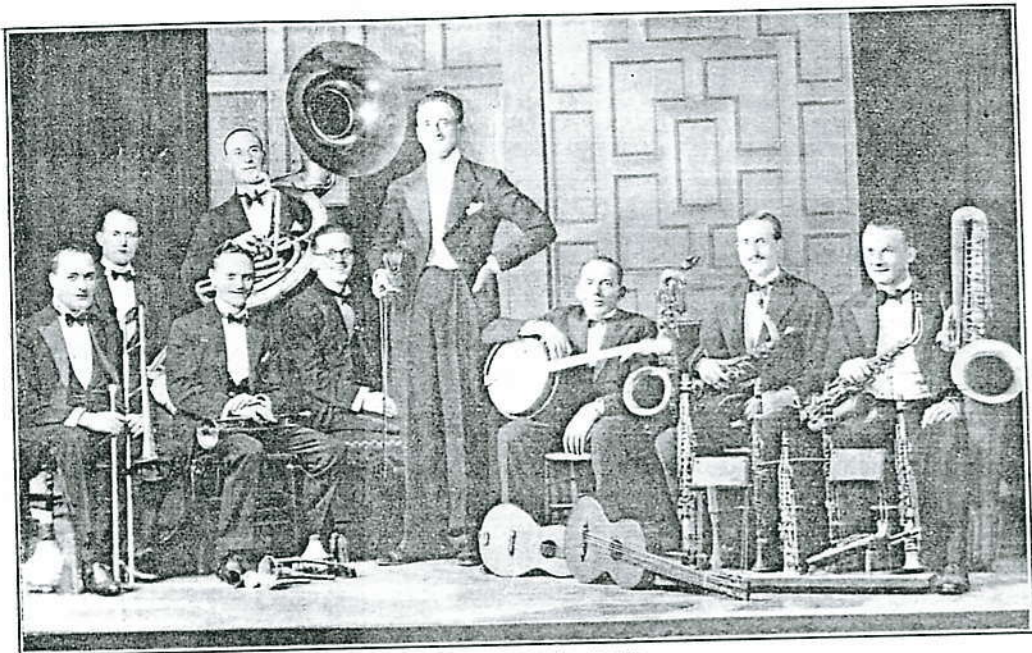




Premier



These Famous Bands



SAVOY HAVANA BAND



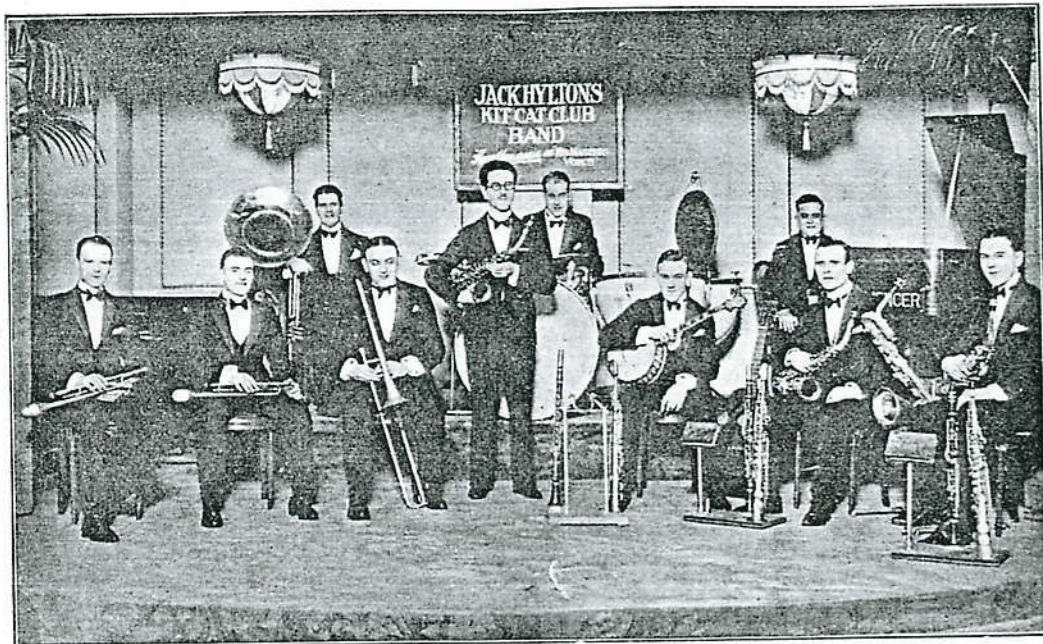
JAY WHIDDEN AND HIS MIDNIGHT FOLLIES BAND



Premier



use "Premier" Drums



JACK HYLTON'S KIT-CAT CLUB BAND



ALFREDO'S BAND



Premier



Cymbal Stands Trap Trees, etc.

Cymbal Stands

A real necessity for Dance Bands and useful to all drummers.

Supplied with a spring holder or a PREMIER "Cymbal Rocker."

The stand is strong and rigid, yet light and easy for carrying. Many drummers use one each side of the drum and the appearance is certainly great.

No. 314. Cymbal Stand with Spring Holder.

No. 315. Cymbal Stand with PREMIER "Cymbal Rocker."

No. 316 as No. 314, but with cast base.

No. 317 as No. 315, but with cast base.



Gong or Tom-Tom Stand

Very useful Stand. Strong, light and inexpensive. Adjustable to height. Folding legs. No. 312.

No. 313 with cast base.

Trap Tree

The very latest idea for the arrangement of traps, these trees are now recognised as almost a necessity for all classes of drummers—dance or theatre.

PREMIER Trap Trees are light, yet strong, and fold into a convenient size for carrying about. The holders will fit in any position on the tree.

Will extend to a height of 4 feet.

The Tree may be had with just the particular holders required, and if desired, can be supplied with a heavy base similar to our "Concert Model" Snare Drum Stand. (See previous page).

- No. 308. Trap Tree without Holders.
- No. 309. With Cast Base.
- No. 308a. Cymbal Holder—Rocker.
- No. 308b. Cymbal Holder—Suspender.
- No. 308c. Tom-Tom Holder.
- No. 308d. Wood Block Holder.
- No. 308e. Two-Note Wood Block Holder.
- No. 308f. Tambourine Holder.
- No. 308g. Triangle Holder.
- No. 308h. Cow Bell Holder.
- No. 308i. Trap Table.





"Premier" Drum Stands

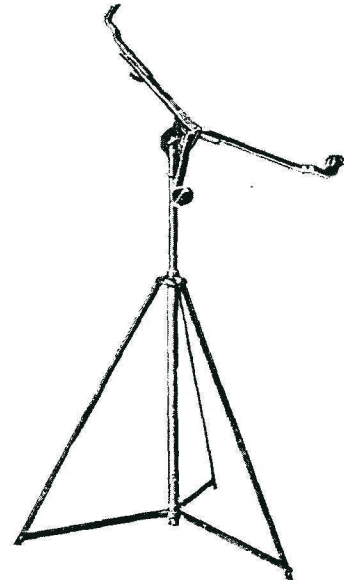


Concert Model

This is the very latest "PREMIER" Snare Drum Stand and the ideal for concert, theatre and cinema drummers. It has a heavy cast base, and whatever the weight of your drum there is no chance of it wobbling.

Adjustable as regards both height and angle, it is easily taken apart.

No. 300.

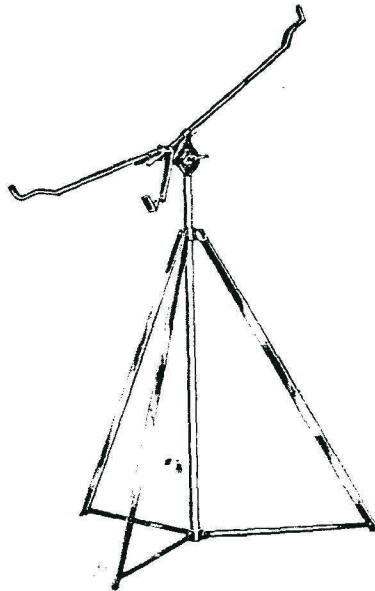


Heavyweight Folding Model

An improved model built for those who require a heavy, and at the same time, a folding stand. The foot is of the usual tripod type, but is made of extra strong material to entirely prevent wobbling. Fully adjustable: the arms are fitted with rubber grips, which hold the drum tightly without injuring the hoop.

Nickel-plated.

No. 301.

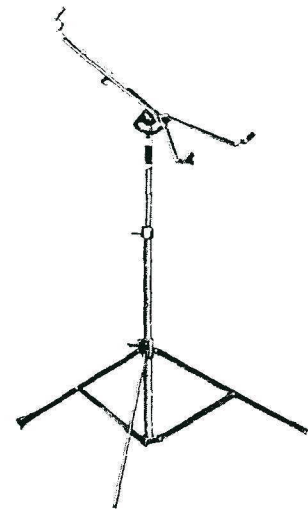


The Popular

A neat, light and durable stand which we strongly recommend for "gig" drummers. It is made throughout of nickel-plated pressed steel parts, which ensures it being as rigid and substantial as it is possible to make a really portable stand.

Easily and fully adjustable, with the supporting arms set at an angle to allow for clearance of snares.

No. 302.



Junior Model

This stand is very light, but will take any size drum and is very strong. Made throughout of pressed steel parts, nickel-plated, will fold into small space.

Adjustable to height and angle, clearance of snares allowed for. Remarkable value for the low price.

No. 303.





Cymbals



Genuine

K. ZILDJIAN & CIE Cymbals

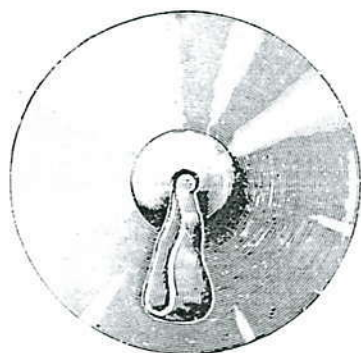
These famous Turkish Cymbals with their marvellous tone, are absolutely indispensable to every professional drummer. They respond instantly to the slightest tap and possess tremendous crash power. Highly sensitive and unequalled both in volume and delicacy of tone.

- No. 330. 12-in.
- No. 331. 13-in.
- No. 332. 14-in.
- No. 333. 15-in.

Imitation Turkish Cymbals

A very good imitation of Turkish Cymbals with a fine resonant tone. They cannot, of course, be compared with a genuine Zildjian, but make an excellent substitute for those who do not desire to pay the higher price of that make.

- No. 338. 12-in.
- No. 339. 13-in.
- No. 340. 14-in.
- No. 341. 15-in.



English Spun Brass Cymbals

A Cymbal of surprisingly good quality of tone, for the very small cost.

- No. 345. 6-in.
- No. 347. 7-in.
- No. 348. 8-in.
- No. 349. 9-in.
- No. 350. 10-in.
- No. 351. 11-in.
- No. 352. 12-in.
- No. 353. 13-in.
- No. 354. 14-in.
- No. 355. 15-in.



Chinese Cymbals

A first class Crash Cymbal; every drummer should consider the inclusion of one, particularly for cinema effect. They are imported by us direct from China and are the finest obtainable. Made from extra thick hammered metal, which ensures a rich full tone.

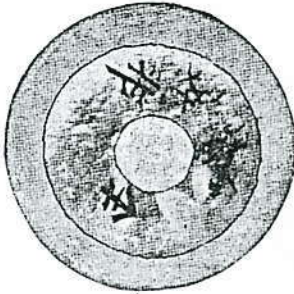
- No. 362. 12-in.
- No. 363. 13-in.
- No. 364. 14-in.
- No. 365. 15-in.

Cymbal Straps. Good quality leather straps. No. 359.





Gongs, Toms-Toms, etc.



Genuine Chinese Gongs

(Tam-Tams)

Our Genuine Chinese Gongs are unsurpassed for giving the real oriental gong and tam-tam effect. Very necessary for descriptive work.

No. 370. 14-in.

No. 371. 18-in.

Tom-Toms

Genuine Chinese decorated Tom-Toms should also be included in every drummer's kit. For oriental music they are unique in tone, and cannot be surpassed.

No. 375. 10-inch.

No. 376. 12-inch.

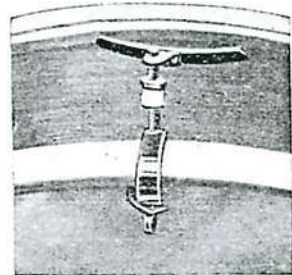
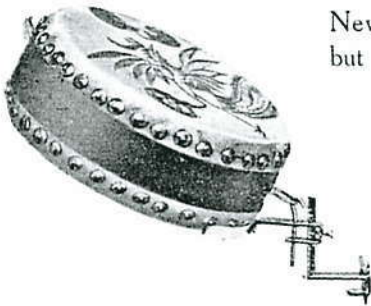
No. 377. 15-inch.



"Premier" Tom-Tom Holders

"Premier" Hold-Fast

New and improved Holder which grips tight but does not damage the drum. No. 385.



"Premier" Popular

A cheaper but quite efficient holder. No. 386

Egyptian Cymbals on Clips

Used in pairs like small bell cymbals. Each solid nickel cymbal is of a different pitch, and is complete with clamp to fasten to counter hoop. Very useful for after-beat work, etc. No. 358.

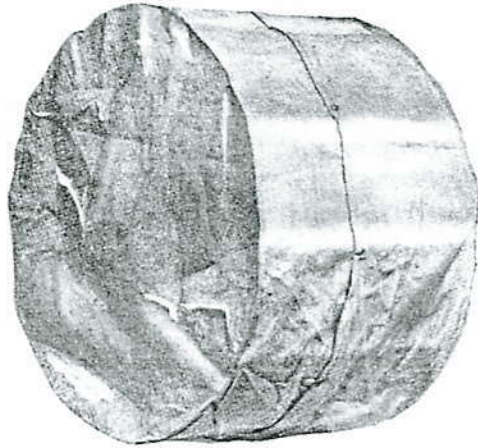




“Premier” Drum Covers

Well made of thick Khaki double twill, PREMIER Drum Covers are of great service. The extra strong press buttons make it easy to put them on and take them off, and they will not come unfastened “on the way.”

An absolutely waterproof cover for the drum. Very necessary for keeping your heads perfectly dry.



No. 396.	12-in. x	3-in.
No. 397.	14-in. x	3-in.
No. 398.	15-in. x	3-in.
No. 399.	14-in. x	4-in.
No. 400.	15-in. x	4-in.
No. 401.	14-in. x	5-in.
No. 402.	15-in. x	5-in.
No. 403.	15-in. x	10-in.
No. 404.	15-in. x	12-in.
No. 410.	22-in. x	4-in.
No. 411.	24-in. x	5-in.
No. 412.	26-in. x	5-in.
No. 415.	24-in. x	8-in.
No. 416.	26-in. x	9-in.
No. 417.	26-in. x	12-in.
No. 418.	28-in. x	9-in.
No. 419.	28-in. x	12-in.

No. 420.	28-in. x	15-in.
No. 421.	28-in. x	18-in.
No. 422.	30-in. x	12-in.
No. 423.	30-in. x	15-in.
No. 424.	30-in. x	18-in.
No. 425.	32-in. x	15-in.
No. 426.	32 in. x	18-in.
No. 427.	32-in. x	21-in.

The above are *Shell measurements*, we make allowance for Counter Hoops.

Carrying Straps

The best method of carrying your Bass Drum is to use one of our carrying straps with sling for shoulder. Made of good quality leather.

No. 700 for 24-in. Bass Drum.	No. 702 for 28-in. Bass Drum.
No. 701 „ 26-in. „ „	No. 703 „ 30-in. „ „

Bass Drum Cases

Made on similar lines to our Tympani cases. (See page 17). State size of drum.
No. 436.



Fibre Disc Head Protector

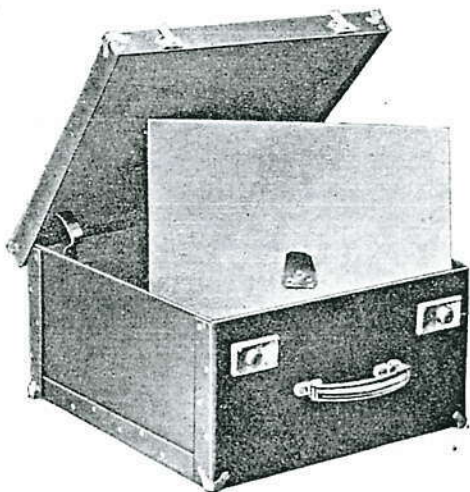
A “Safety First” item that protects drum heads and Tympani heads from damage in transit, etc. Made of heavy fibre.

No. 440.	14-in.	No. 445.	24-in.
No. 441.	15-in.	No. 446.	26-in.
No. 442.	16-in.	No. 447.	28-in.
No. 443.	17-in.	No. 448.	30-in.
No. 444.	22-in.	No. 449.	32-in.



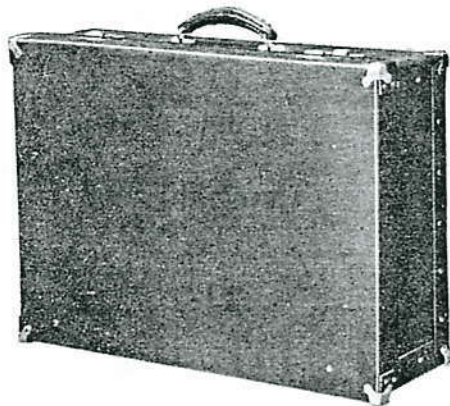


Snare Drum Cases



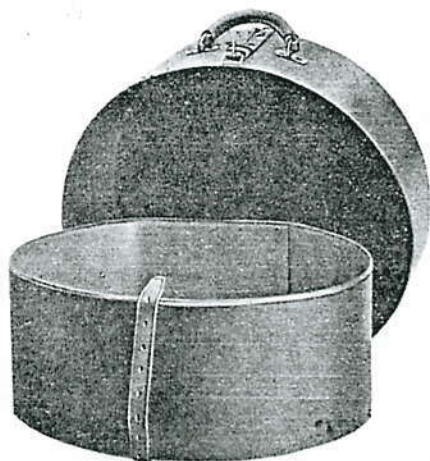
Suit Case Model with Tray

Strong, serviceable case, with loose partition for carrying traps or dress suit. Made with a strong frame, best grade fibre and good quality lining. Fitted with two locks, and special corner reinforcements. A strong yet light case. No. 453.



Suit Case Model

A model in extensive demand. Will accommodate any size snare drum from 3 in. x 14-in. to 6½-in. x 15-in., and has two separate compartments for traps. A very serviceable case, made with strong frame covered with very best grade fibre, and lined with good quality felt. Special locks and clasps. No. 452.



Round Telescopic Drum Case

This round Drum Case cannot roll away. It stands on a flat end, looks neat, and is strongly made of best quality fibre, with leather strap and handle. Specially suitable for "Gig" drummers as it is extremely light in weight and at the same time will hold any amount of kit. With a loose partition for protecting your Snare Drum. No. 456.

An unsolicited testimonial from a famous Drummer.

Ealing, W. 5.

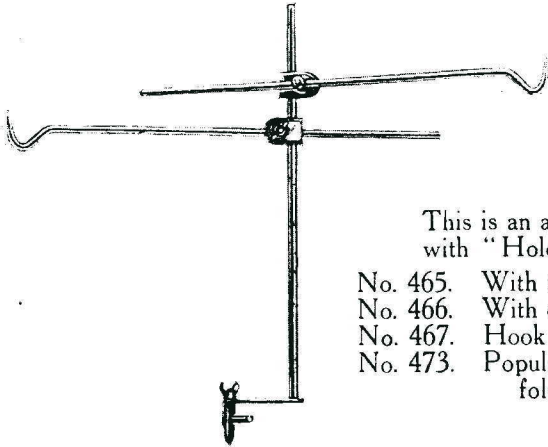
"I take great pleasure in complimenting you on the fine standard you have attained in the art of Drum making. You are certainly the first manufacturers to realise the necessity of good Drums, which are essential to the modern player."

*(Signed) ALEX. C. CRIPPS,
(Bert Ralton's Original Havana Band).*





Cymbal Accessories



"Holdfast" Cymbal Suspenders

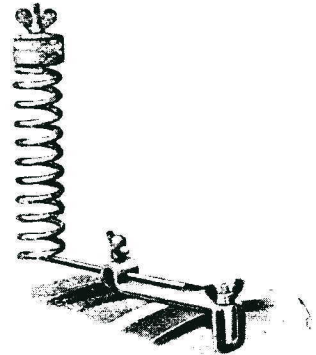
There is no better device for mounting a Cymbal than allowing it to hang suspended. Only by this means can the full value of tone be obtained.

This is an adjustable nickel-plated steel suspender with "Hold-Fast" clamp for Bass Drum.

- No. 465. With two hooks (as illustrated).
- No. 466. With one hook.
- No. 467. Hook and clamp only.
- No. 473. Popular Cymbal Suspender. Standard folding type. Double hook.

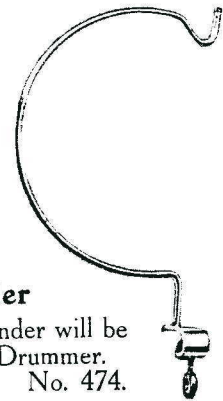
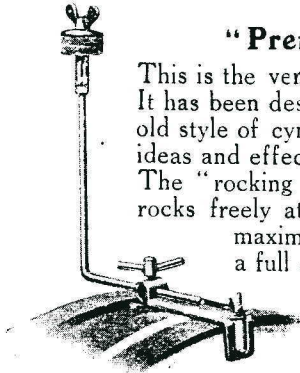
Spring Cymbal Holder

This improved pattern Spring is for the drummer who prefers a holder that keeps the Cymbal steady. It will hold at any angle and is completely adjustable. Made of the best tempered steel, nickel plated and fitted with the perfect "Hold-Fast" clamp. No. 470.



"Premier" Cymbal Rocker

This is the very latest type of cymbal holder. It has been designed for those who combine the old style of cymbal playing with the many new ideas and effects which are now in vogue. The "rocking cup," on which the cymbal rests, rocks freely at the slightest tap, which ensures maximum vibration and, consequently, a full cymbal tone. No. 472.



Junior Suspender

This economical Cymbal Suspender will be found very useful for the Home Drummer. No. 474.





Traps

Circular Two-Note Wood Blocks

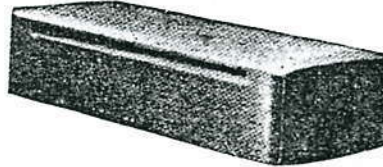


Two-Tone Wood Blocks of superior quality; a different note each end. They possess a resonant and clear tone, and give scope for a variety of effects. Supplied complete with special "Hold-Fast" attachment for Bass Drum.

- No. 486. Complete as illustrated.
- No. 487. Block only.
- No. 488. Holder only.

Flat Wood Blocks

Genuine Chinese. These solid Wood Blocks are so constructed with slots as to produce a powerful "click" when struck. Made of the finest Chinese Redwood. Every Drummer needs one for every class of work.



- No. 478. Small.
- No. 479. Medium.
- No. 480. Large.

For those not requiring Genuine Chinese Blocks we supply the following special lines:—

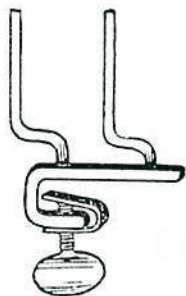
- No. 482. Single slot.
- No. 483. Polished Oak, double slot.

Foot Cymbal Pedal

This trap is very serviceable for Special Cymbal effects, such as Charleston Leats, etc. Well built of selected wood in black ebonized finish.

With canvas webbing foot-strap and strong hinge that will stand heavy usage. No. 286.

"Hold-fast" Wood Block Holder

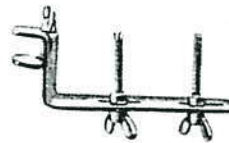


Popular Wood Block Holder

Fastens rigidly and securely to Bass Drum Counter Hoop.

Will fit any size block.

No. 491.



With new "hold-fast" clamp which does not damage the drum. Holds the Wood Block in handy position for striking, level with rim of drum.

This holder is adjustable to any size block and does not wobble. No. 490.

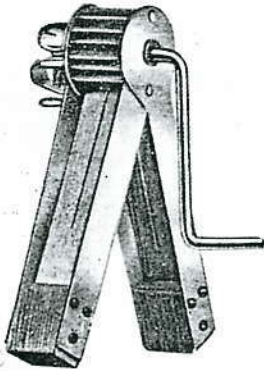


Traps

Single or Double Rattles

Strongly made from the finest material possible, this effect is essential to the music hall and picture house drummer. Complete with clip for bass drum.

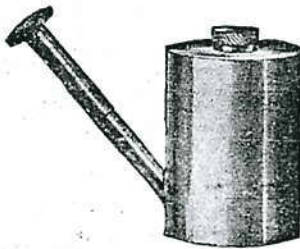
No. 495. Single Rattle.
No. 496. Double Rattle.



Three Tone Metal Whistle

A very effective and inexpensive little trap. Excellent imitation of steamboat, launch, or train.

No. 497.



Bird Whistle

Very carefully voiced for accurate imitation of a nightingale; the effect is most realistic. This Bird Whistle is made of brass, and handsomely nickel-plated. Used with water, but will not leak. No. 498.

Duck Call

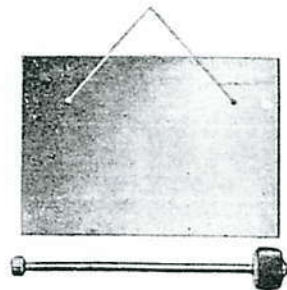
Gives the most perfect imitation of a duck quack, and many other excellent effects can also be produced. No. 499.



Bell Plate

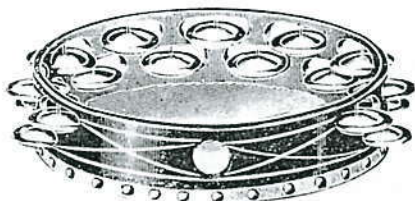
A realistic Railway Bell Tone, also suitable for other effects. The plate is made of best steel, beautifully nickel-plated.

No. 500. Bell Plate only.
No. 501. Mallet only.





Traps



Tambourines

With selected vellums and finished in Black and Gold, these Tambourines are made to stand the hardest and roughest handling. For quality of tone, they are excellent and dependable.

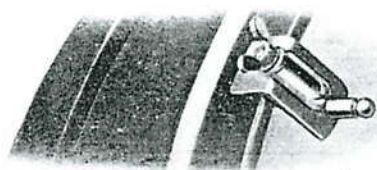
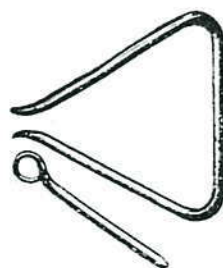
- No. 502. 9-in. dia.—6 sets of Jingles.
 No. 503. 9-in. dia.—17 sets of Jingles.

TAMBOURINE JINGLES—NICKEL. No. 504.

Triangles

Made of specially selected steel so as to ensure a very clear tone. PREMIER Triangles are of superior value and in great favour among discriminating drummers. Complete with Beater.

- No. 506. 6-in. No. 508. 8-in.
 No. 507. 7-in. No. 509. 9-in.



Triangle Holder

A special triangle holder that clamps to counter hoop of bass drum. There is a gut loop over which the triangle is slipped, and which allows it a free vibration and clear ring. No. 510.

Castanets

Best quality castanets, very durable, with real Spanish tone, in no way to be compared with the cheap stained wood articles on the market. Used extensively by all classes of drummers.



- No. 512. One pair on handle.
 No. 513. Two pairs on handle.
 No. 514. Two pairs without handle.



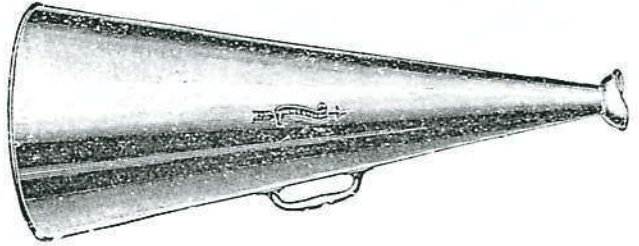


Traps

Megaphones

Our Aluminium Megaphones are in great demand as they do not distort the voice. All sizes, except 4½-ins., fitted with handles.

Excellently finished, light, very strong and unsurpassed in value.



No. 517. Pocket model.
No. 518. 10-in.

No. 519. 12-in.

No. 520. 15 in.
No. 521. 22-in.

Collapsible Megaphones

Can be used as a 5½-in., 10-in., 14-in., 19-in., according to range required.

Will remain perfectly rigid when in use.

Size (Collapsed) 8-in. x 5½-in. Weight 8-ozs. No. 522.

Stands (for Megaphones) See Gong Stands, page 27.

Siren

A very desirable and indispensable trap available for many uses, and exceptionally powerful. Strongly made and nickel-plated.



No. 524. As illustrated.

No. 525. As illustrated, with wrist strap.

No. 526. 5½-in. with horn, as illustrated.

No. 527. 9-in. with horn, " "



Whistle

Extremely powerful, very reliable shrill metal whistle. Every cinema drummer needs one. No. 529.



Cowbells

No. 530. Set of Three, Complete with Holder.

No. 531. Set of Four, Complete with Holder.



SINGLE BELLS

No. 532. Size 1.

No. 533. Size 2.

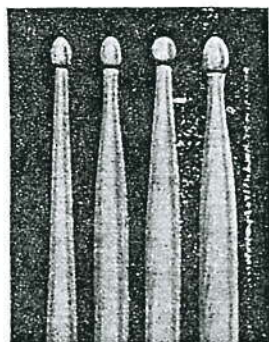
No. 534. Size 3.

No. 535. Size 4.



Sticks, etc.

Premier Sticks



A B C D

SNARE DRUM STICKS—Tough Drum Sticks that will stand any amount of rough usage. Made of selected second growth hickory.

These are the "Premier" Sticks for PREMIER Drums.

No. 545a. No. 545c.
No. 545b. No. 545d.

Gong Beaters

No. 544. Solid felt.

Bass Drum Sticks

First-class Bass Drum Sticks with selected cane handles.

No. 542. Lamb-wool covered cork.
No. 543. Solid Felt.

Ebony Sticks

Best quality ebony sticks of perfect balance. Made in four standard models (see illustration of Hickory Sticks)

No. 546a. No. 546c.
No. 546b. No. 546d.

Two-in-One Sticks



No. 547a.

No. 547b.

No. 547c.

No. 547d.

Made in our four standard hickory models, with padded felt butt ends. Very useful for Tom-Tom, Crash Cymbal or Bass Drum when quick changes are necessary.

Tympani Sticks

As used by the leading Tympanists. May be obtained with hard heads of solid felt; medium covered heads with special felt core; or finest quality soft felt heads, fitted on malacca or hickory canes.

Malacca Canes.

Hickory.

No. 540h. Hard Heads.

No. 541h. Hard Heads.

No. 540m. Medium Heads.

No. 541m. Medium Heads.

No. 540s. Soft Heads.

No. 541s. Soft Heads.

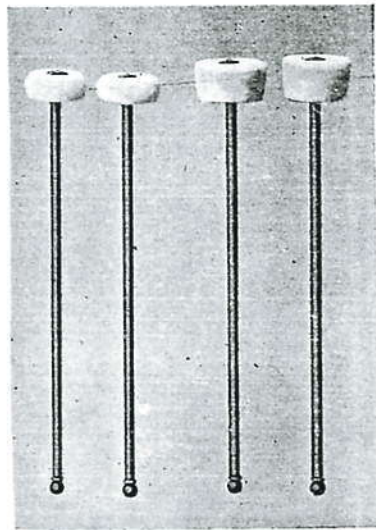
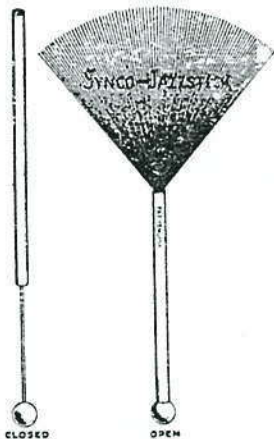
No. 540f. Felts only. State hard, soft or medium.

Wire Brushes

A very fine steel-wire brush effect that should be included in every drummer's kit.

The wire brush is used for producing a variety of effects either by light taps or swishing effect on Snare or Bass Drums.

Perfectly balanced, with rubber ball at one end, which is useful for immediate change to bass drum beats, muffled snare drum, wood blocks, etc. No. 553.



540M

541S

Live Tip Snare Drum Sticks

The very latest idea in Snare Drum Sticks, which is already enormously popular. They have a composition head which is attached to the hickory stick with a steel spring. This, as the name implies, makes execution very lively and enables the fastest beats to be played with ease. Made in the four standard hickory models.

No. 548a.

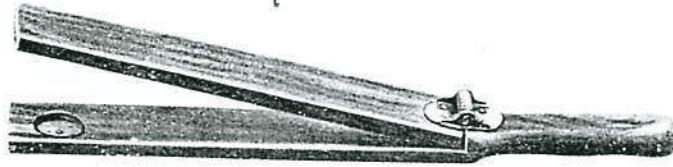
No. 548b.

No. 548c.

No. 548d.



Traps



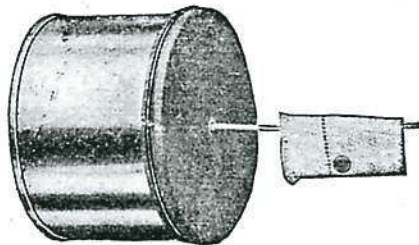
Slap Sticks

A new Slap Stick feature used in pairs, very popular, and suitable for fast work. Strongly made and very loud, produces a real slap effect.

Small Model. No. 555.
Large Model. No. 556.

Sleigh Bells

These very effective Bells for descriptive work, are made of the finest bell metal nickel-plated and mounted on wire with handle. No. 557.



Dog Bark

A very good imitation of a dog bark, realistic and effective. Body made of metal, with a four-inch drumskin head. No. 558.

Anvil

A good anvil imitation guaranteed to give the real effect. No. 559.

Sand Blocks

The sand-paper can be quickly refixed in a few seconds.

The best sand blocks obtainable. No. 561.

Cuckoo

This is made of brass, heavily nickel-plated and produces a perfect effect. No. 560.

No. 560a Ditto, with adjustable slide.



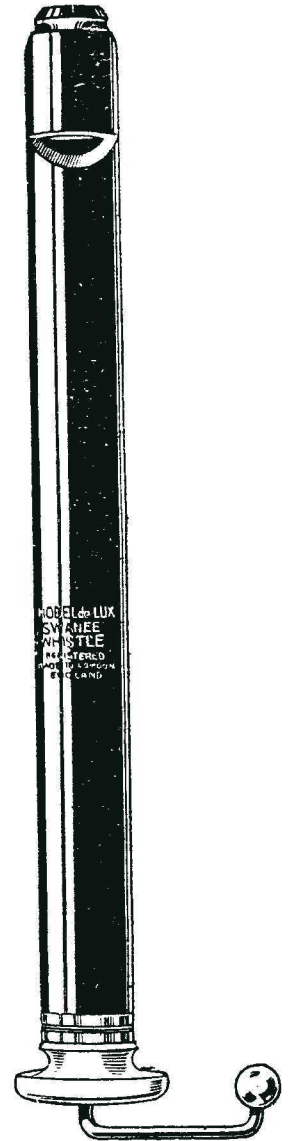


Traps

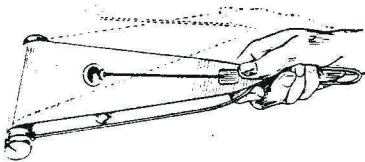
Swanee Whistles

These instruments are very effective and are useful both for the cinema and dance drummer. They are perfectly simple to play in any key, without knowledge of music.

- No. 562. Model De Luxe.
- No. 563. Professional Model.
- No. 564. Swanee Piccolo.



Flex-a-tone



The Flex-a-tone has a distinctive tone, which combines the effects of orchestra bells and musical saw.

- No. 565. Flex-a-tone.
- No. 566. Flex-a-tone Junior
- No. 565s. Spare Springs.
- No. 565k. Spare Knobs.

Clicker



A simple article that produces an exact imitation of a typewriter or telegraph instrument. Tempered steel tongue, beautifully nickel-plated. No. 567.

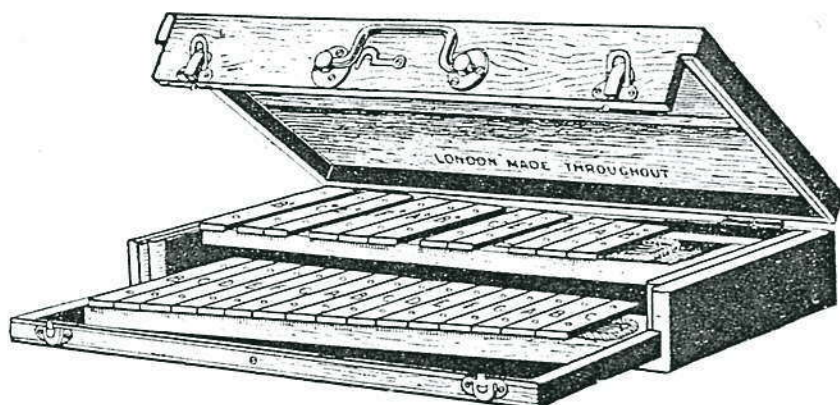
Horse Trot Imitator



A very effective and realistic imitation which gives the best possible pavement effect. No. 692.



“Premier” Orchestra Bells



You cannot buy better Bells than these. They are wonderfully rich and pure in tone without a waver, and give practically no overtone. Made of unusually hard steel, specially selected and tested, with the result that the vibrations are even, and although penetrating with great carrying power, they are not in the slightest degree harsh. The notes are of correct width and are well finished.

Ordinary Bells never give complete satisfaction, but PREMIER Orchestra Bells will give your playing ability perfect expression. They will give you complete satisfaction and never prove detrimental to your art.

Supplied complete with beaters, in a strong neat case, with handle and 1 cks.

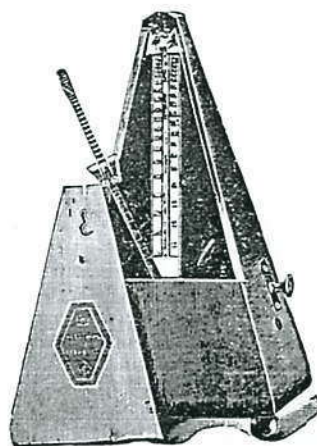
No. 570. 27 note B flat to C.

No. 574. Cone Shape Beaters.

Metronomes

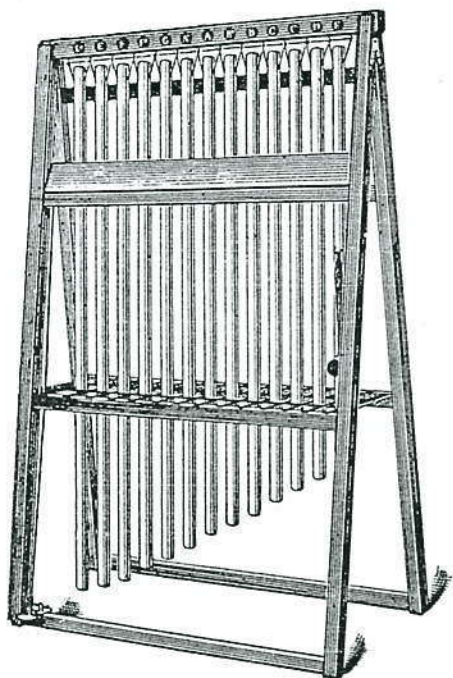
(Made in France).

Real Mahogany Metronomes with bell and loose door. Very useful to the Drummer when practising, as by the aid of the Metronome, he can adjust his tempo and ensure getting an even and steady rhythm. No. 575.





"Premier" Tubular Bells



Made to a very high standard, to give lasting satisfaction, flawless in pitch and tuning, and perfectly uniform in volume and quality of tone. The Bells are constructed of the very best highly tempered bell metal, and give a remarkable combination of strength and resonance.

A PREMIER product we are proud of; beautifully nickel-plated and mounted on a strong folding frame, complete with damper and rawhide mallet.

When ordering state whether High or Low Pitch is desired.

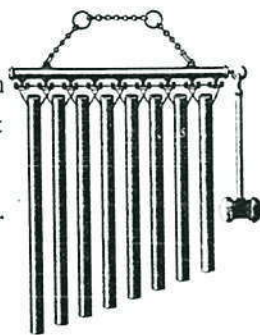
- No. 576. Set of 8-1-inch Bells. Key of E flat.
- No. 577. Set of 13-1-inch Bells. Key of E flat.
- No. 578. Set of 8-1½-inch Bells. Key of E flat.
- No. 579. Set of 13-1½-inch Bells. Key of E flat.

Dance Orchestra Chimes

Very handy special portable model. Eight or thirteen bell metal nickel-plated chimes on a special neat wooden frame. Complete with striker.

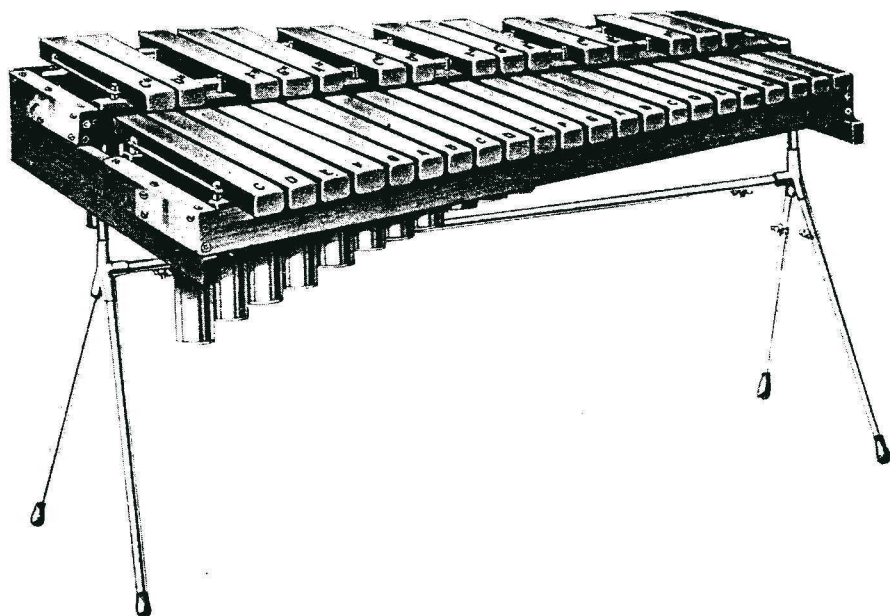
A beautifully made and finished instrument. In High or Low Pitch as required.

- No. 580. Eight Bells in E flat.
- No. 580a. Thirteen Bells in E flat.





“Premier” Light-Weight Xylophones



Designed with the object of providing the lightest possible Xylophone with resonators for practical use.

It is particularly serviceable for those who do not specialise exclusively on the Xylophone, yet who desire an instrument at a moderate price, which will give the quality of tone obtainable from a full-size Xylophone. Made of the finest quality materials throughout.

This light-weight model is the proper height for playing in a sitting position, but can also be supplied with extension legs which will increase the height sufficiently for playing in a standing position.

A thoroughly finished and perfectly designed instrument.

No. 581	2½ Octave.
„ 582	3 „

Beaters

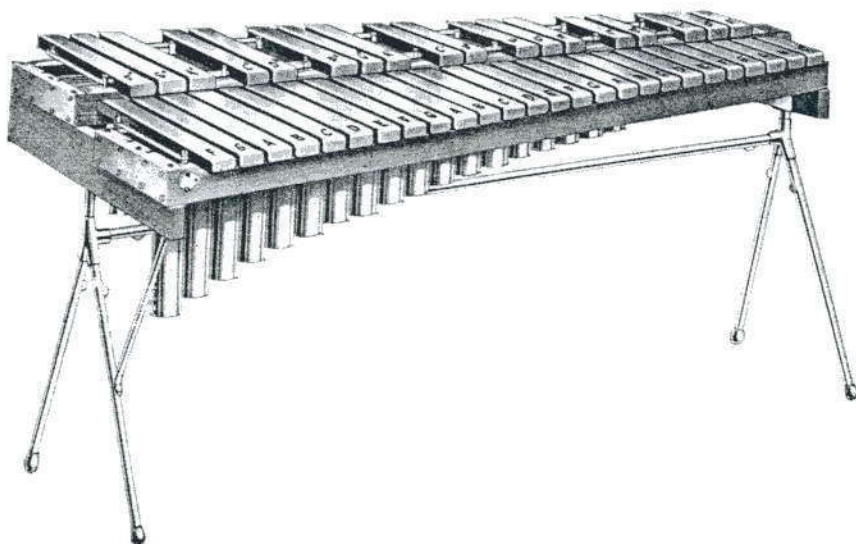
Best quality Xylophone Beaters with Cane Handles, to suit all requirements.

No. 590.	Spoon Shape.	No. 591.	Vulcanite Knobs.
„ 592.	Rubber Knobs.	„ 593.	Boxwood Knobs.





"Premier" De Luxe Xylophones



This De Luxe Model is intended for the musician who requires the finest instrument obtainable. It has many special features, which make it the best for the professional Drummer.

The bars are made of specially selected wood, very carefully mounted, and the whole instrument is of exceptionally fine workmanship and beautifully finished.

The resonators are of highly-tempered bell metal, which is essential for the production of perfect resonance.

It is fully large enough for solo work yet sufficiently compact for easy transport; in every way the ideal instrument for any kind of work. Supplied on beautifully nickel-plated stand fitted with wheels. Complete with set of beaters.

The Xylophone is rapidly gaining in popularity and plays an important part in modern band music.

No. 584. $3\frac{1}{2}$ octave. No. 585. 4 octave.

Marimbas

Made to order only.

The Marimba gives a tone rather more subdued in character, especially in the lower range, than the Xylophone, yet the tone is sustained and has an exceptional carrying power similar to that of an organ.

No. 596. 3 octave. No. 597. $3\frac{1}{2}$ octave. No. 598. 4 octave.

Soloist's Wheels

A strongly-built set of wheels, which are a great convenience when your Xylophone has to be moved. No. 602.





Sundries

Tutors

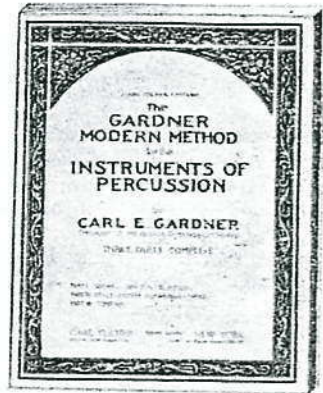
We have carefully selected the Tutors which are without doubt the very best published. They have been written by the best artists.

No. 625. Gardner Method No. 1, for Drums and Accessories.

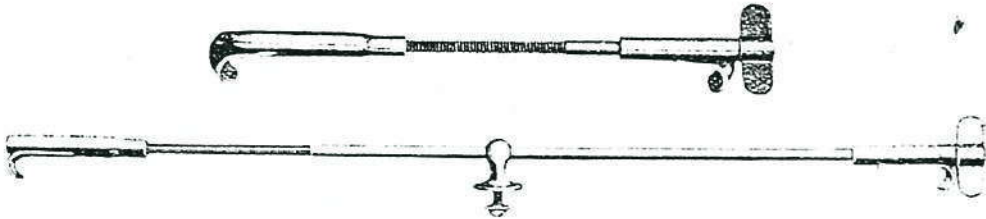
No. 627. Gardner Method No. 3, for Tympani.

No. 628. Green Bros., Beginners' Method, for Xylophone and Marimba. Commences at the very beginning and explains all the beginner wants to know about Xylophone, Marimba and Bells. Exclusively adopted by many prominent teachers.

No. 629. Green Bros., Advanced Method.



Premier Tension Rods



The strongest and neatest on the market, beautifully made, with nickel-plated finish; the hooks are of pressed steel and every thread is cut perfectly.

No. 605. Single Tension Snare Drum Size.—Popular Type.

- „ 606. „ „ Bass „ „ „
- „ 607. „ „ „ „ „ De Luxe Model Type.
- „ 608. Separate Tension Snare Drum Size.—De Luxe Type.
- „ 609. „ „ Bass „ „ Popular Type.
- „ 610. „ „ „ „ „ De Luxe Type.

Practise Pads

A very useful article for practising touch. The centre is solid felt and gives the proper rebound, whilst enabling you to practise silently. No. 635.

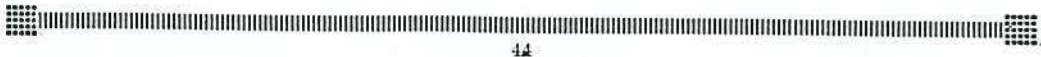
Flesh Hoops and Counter Hoops

When ordering state size of *shell* only.

When ordering flesh or counter hoops, we must insist that the shell of the drum be sent to us if a perfect fit is desired. If this is not possible, place the shell on a piece of paper and draw round the outside edge. In the latter case, however, we cannot accept any responsibility if hoops do not fit.

No. 620. Flesh Hoop for Snare Drum.

- „ 621. „ „ Bass or Tympani Drum.
- „ 622. Counter Hoop for Snare Drum.
- „ 623. „ „ Bass „





Snare and Snare Strainers

"Premier De Luxe"

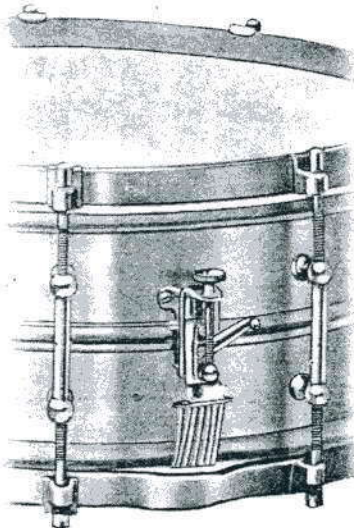
Snare Strainer and Release

A beautifully made and mechanically correct strainer and release. Positive in action, absolutely dependable and will not allow snares to cross.

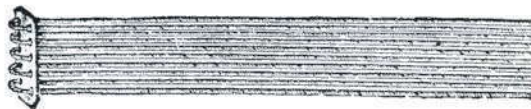
Snare are adjusted by a thumbscrew and cannot then get out of position. Throw off does not interfere with snares or get them out of adjustment. When the snares are engaged, a self-locking lever holds them absolutely rigid.

Complete with snare clamp.

No. 636.



"Premier" Snare



Extra fine quality wire covered, silk snares. Set of twelve. No. 644.

Wire covered cotton. Set of twelve. No. 645.

Super quality wire on gut. Set of twelve. No. 646.

Super quality gut snares. Set of twelve. No. 647.

American Wire Snares. No. 648.

Bass Drum Rack

This rack has been made to meet the requirements of the Bass Drummer who has to play whilst standing.

Made of best quality steel, nicely finished, with rubber buffers to prevent injury to the drum. No. 642.



"Premier" Drum Heads

Premier SUPER SLUNK

"Premier" Super Slunk Heads

Are without doubt the finest Snare Drum Heads obtainable. Made from very young calves, they are transparent, flexible, and give a full rich tone. Be sure you get a genuine "PREMIER" SUPER SLUNK and you will be fully satisfied.

Batter Heads		Snare Heads	
No. 651b.	15-in. for 12-in. Shell	No. 651s.	15-in. for 12-in. Shell
No. 652b.	16-in. " 13-in. "	No. 652s.	16-in. " 13-in. "
No. 653b.	17-in. " 14-in. "	No. 653s.	17-in. " 14-in. "
No. 654b.	18-in. " 15-in. "	No. 654s.	18-in. " 15-in. "
No. 655b.	19-in. " 16-in. "	No. 655s.	19-in. " 16-in. "

"Premier" White Calf Tympani Heads

Specially selected heads for Tympani are made by a perfected scientific process from the finest calf skins obtainable. They are perfectly smooth and malleable, and guaranteed to give the proper tympani tone.

No. 665.	26-in. for 22-in. Shell
No. 666.	28-in. " 24-in. "
No. 667.	32-in. " 28-in. "

"Premier" White Calf Heads

Are specially made of finest selected calf skins. The Curing is done without chemicals of any kind, and they are made to an even thickness by hand. The skins are heavier and more durable than transparent vellums because they are from older animals. "PREMIER" White Calf Heads give the best tone and last longest.

No. 658.	28-in. for 24-in. Shell
No. 659.	30-in. " 26-in. "
No. 660.	32-in. " 28-in. "
No. 661.	34-in. " 30-in. "
No. 662.	36-in. " 32-in. "
No. 663.	38-in. " 34-in. "



Buck Vellum

A very reliable yet economically priced vellum, made from selected hides. Their tone is excellent, their appearance quite good; and they can be relied upon for hard all round work, where the very best quality is not required.



Batter Heads		Snare Heads		Bass Heads	
No. 671b.	15-in. for 12-in. Shell	No. 671s.	15-in. for 12-in. Shell	No. 680.	24-in. for 20-in. Shell
No. 672b.	16-in. " 13-in. "	No. 672s.	16-in. " 13-in. "	No. 681.	28-in. " 24-in. "
No. 673b.	17-in. " 14-in. "	No. 673s.	17-in. " 14-in. "	No. 682.	30-in. " 26-in. "
No. 674b.	18-in. " 15-in. "	No. 674s.	18-in. " 15-in. "	No. 683.	32-in. " 28-in. "
No. 675b.	19-in. " 16-in. "	No. 675s.	19-in. " 16-in. "	No. 684.	34-in. " 30-in. "
				No. 685.	36-in. " 32-in. "
				No. 686.	38-in. " 34-in. "

Lapping Tool

A very handy tool for lapping heads. Nickel plated rustless prong mounted on a polished wood handle. No. 690.





Service Hints

IN answer to the many enquiries we receive on the care and upkeep of Drums, we feel sure the following hints will be found useful. They are methods proved to be satisfactory and successful in every way. Here is the best way to "tuck" a drum head. Soak the head in clean water (which must not be too cold) for 5 or 6 minutes in the case of thin snare drum heads, or 15 to 20 minutes in the case of Bass Drum heads.

Lay the head, flesh side up, on a clean flat table, smooth out all creases and roughly dry off any superfluous moisture with a cloth. Place the fleshhoop in the centre of the head, so that an equal margin is allowed all round the edge. Then fold and tuck under the lower side of the fleshhoop at four equal places. The remainder of the head can then be tucked under. For this tucking process, one of our lapping tools is the best thing to use; but in the case of emergency the end of a tablespoon or large fork will be found quite practical.

The head should then be dried with a cloth as thoroughly as possible, *mopping* the skin—not rubbing it. It must then be placed straight on the Drum shell and allowed to dry thoroughly. This usually takes from 12 to 24 hours, according to the thickness of the head and the climatic conditions.

When the head is quite dry the Drum can be re-assembled.

Tympani heads must undergo a further treatment. After the Tympani has been re-assembled, the head should be well wetted on the exposed surface, taking care that no moisture gets under the counter hoop. Use a sponge or clean cloth for the purpose.

Pull the Tympani up evenly a bare $\frac{1}{4}$ -in. When the head is quite dry, the lower note will be obtained quite easily.

The above method can be used if the head becomes too tight for tuning to low notes.

It is the opinion of many Drummers (and also our opinion) that Drum and Tympani heads should always be kept quite taut. We have found that much better tonal results are obtained, with less head breakages.

On damp days it is not advisable to put a lot of extra tension on your Drums, and any tension which may be applied should be eased at the end of the day's work.

Heads must be tensioned evenly and the hoops kept square and parallel with each other. THIS IS A MOST IMPORTANT POINT.

All threaded parts of Drums and Tympani must be kept well greased with vaseline. This should be done frequently, say, every two or three months.

REMEMBER—we are practical Drum Makers, under Drummers' supervision, and we are always willing and pleased to help by giving any information we can, which may be of service to our customers. We also like to receive your criticisms and suggestions as it is our aim to produce the exact requirements of the modern Drummer.





Index

Anvil	Page	38
Bass Drums	10, 11, 13, 14, 15	
Bass Drum Cases		30
Bass Drum Lettering		12
Bass Drum Paintings		12
Bass Drum Rack		45
Bass Drum Tray		11
Beaters, Gong		37
Beaters, Orchestra Bell		40
Beaters, Pedal		23
Beaters, Xylophone		42
Bell Plate		34
Bells, Orchestra		40
Bells, Sleigh		38
Bells, Tubular		41
Bird Whistles		34
Carrying Straps		30
Cases, Bass Drum		30
Cases, Snare Drum		31
Cases, Tympani		17
Castanets		35
Chimes, Orchestra		41
Clicker		39
Collapsible Spurs		22
Counter-Hoops		44
Covers, Drum		30
Covers, Tympani		17
Cow Bells		36
Cuckoo		38
Cymbals	28, 29	
Cymbal Holders	23, 32	
Cymbal Pedal		53
Cymbal Stands		27
Cymbal Straps		28
Cymbal Striker		23
Discs, Fibre		30
Coç Bark		38
Drums, Bass	10, 11, 13, 14, 15	
Drums, Military		7
Drums, Snare	5, 7, 8, 9, 10, 11	
Drums, Tympani		16, 17
Drum Heads		46
Drum Outfits	18, 19, 20	
Drum Rods		44
Drum Stands		26
Drum Sticks		37
Drum Tutors		44
Drum Vellums		46
Duck Call		34
Flesh Hoops		44
Flex-a-tone		39
Gongs, Chinese		29
Gong Beaters		37
Gong Stands		27
Heads, Drum		46
Holdings, Cymbal		23
Holdings, Tom-Tom		29
Holdings, Triangle		35
Holdings, Wood Block		33
Hoops, Counter-		44
Hoops, Flesh		44
Horse Trot Imitator		39
Instructions for Ordering		3
Lapping Tool		46
Lettering for Bass Drums		12
Marimbas		43
Megaphones		36

Megaphone Stands	Page	36
Metronomes		40
Military Drums		7
Orchestra Bells		40
Orchestra Bell Beaters		40
Orchestra Chimes		41
Ordering, Instructions for		3
Outfits	18, 19, 20	
Paintings for Bass Drums		12
Pedal Parts		21, 22
Pedals		21, 22
Pedals, Cymbal		33
Pitch Pipe		16
Practise Pads		44
Protectors, Fibre		30
Rack for Bass Drums		45
Rattles		34
Rods		44
Sand Blocks		38
Sirens		36
Slap Sticks		38
Sleigh Bells		38
Snare Drums	5, 7, 8, 9, 10, 11	
Snare Drum Cases		31
Snare Drum Sticks		37
Snare Drum Strainers		45
Snares		45
Soloist's Wheels		43
Spurs		23
Spurs, Collapsible		22
Stands, Cymbal		27
Stands, Drum		26
Stands, Gong		27
Stands, Megaphone		36
Stands, Tom-Tom		27
Sticks, Bass Drum		37
Sticks, Live Tip		37
Sticks, Snare Drum		37
Sticks, Two-in-One		37
Sticks, Tympani		37
Straps, Carrying		30
Straps, Cymbal		28
Strikers, Cymbal		23
Swanee Whistles		39
Tambourines		35
Tom-Tom, Chinese		29
Tom-Tom Holders		29
Tom-Tom Stands		27
Trap Trees		27
Triangles		35
Triangle Holder		35
Tubular Bells		41
Tutors		44
Two-in-One Sticks		37
Tympani	16, 17	
Tympani Cases		17
Tympani Covers		17
Tympani Sticks		37
Vellums		46
Wheels, Soloist's		43
Whistles		34, 36
Wire Brushes		37
Wood Blocks		33
Wood Block Holders		33
Xylophones		42, 43
Xylophone Beaters		42
Xylophone Tutors		44

PROFESSIONALS—NOTE !

We allow bona-fide professionals a special discount of 10% off catalogue prices. Enclose your card when ordering.

Drum Co.

D.
Drums"

Price List to Catalogue "E"

ORDER BY NUMBER
AND STATE CAT-
ALOGUE "E."

This list cancels all
previous lists.

TERMS:—Nett cash
with order. Add
sufficient to cover
carriage.

Premier

TRADE MARK

Buy from your local
dealer who is always
at your service.

Insist on seeing the
"PREMIER" Trade
Mark, the hallmark
of quality.

Catalogue No.	Description	Price.	Catalogue No.	Description	Price.
		£ s. d.			£ s. d.
B1	Super Finish B.D. extra	8. 6	101	Painted B.D.	3 0 0†
B2	" " B.D.	3 15 0†	102	" " "	3 0 0†
B3	" " S.D.	4 0	103	" " "	3 0 0†
B4	" " S.D.	2 10 0†	108	Lettering Plain, per letter	6†
G1	" " S.D.	3 6 8†	109	" " 2 Colour	9†
W1	" " B.D.	8 6	120	De Luxe Separate	
W2	" " B.D.	3 15 0†		Tension B.D. 26×9	7 12 6
W3	" " S.D.	4 0	121	" " " 26×12	8 0 0
W4	" " S.D.	2 10 0†	122	" " " 28×9	8 10 0
50	De Luxe All Metal S.D., 14×4	5 0 0	123	" " " 28×12	8 17 6
51	" " " 14×5	5 5 0	124	" " " 28×15	9 5 0
52	" " " 15×4	5 10 0	125	" " " 28×18	9 15 0
53	" " " 15×5	5 12 6	126	" " " 30×12	9 9 0
60	" " Wood Shell 14×4	4 13 6	127	" " " 30×15	9 17 6
61	" " " 14×5	4 17 6	128	" " " 30×18	10 5 0
62	" " " 15×4	5 2 6	129	" " " 32×15	10 12 6
63	" " " 15×5	5 5 0	130	" " " 32×18	11 0 0
68	" " Military 15×10	6 0 0	131	" " " 32×21	11 15 0
69	" " " 15×12	6 5 0	145	De Luxe Single	
80	Popular All Metal 14×4	3 12 6		Tension B.D. 24×8	6 5 0
81	" " " 14×5	3 15 0	146	" " " 26×9	7 0 0
82	" " " 15×4	4 0 0	147	" " " 26×12	7 5 0
83	" " " 15×5	4 4 0	148	" " " 28×9	7 15 0
86	" " Wood Shell 14×4	3 7 6	149	" " " 28×12	8 2 6
87	" " " 14×5	3 10 0	150	" " " 30×12	8 15 0
88	" " " 15×4	3 15 0	170	Popular Separate	
89	" " " 15×5	3 17 6		Tension B.D. 26×9	5 12 6
95	" " Thumbrod S.D., 14×3	2 10 0	171	" " " 26×12	5 17 6
96	" " " 15×3	2 15 0	172	" " " 28×9	6 5 0
99	Junior S.D. 12×3	1 10 0	173	" " " 28×12	6 10 6
100	Painted B.D. ...	2 10 0†	174	" " " 28×15	6 15 6

Catalogue		Price	
No.		£	s. d.
424	Drum Cover ... 30" × 18"	1	13 4†
425	" " ... 32" × 15"	1	15 6†
426	" " ... 32" × 18"	1	16 8†
427	" " ... 32" × 21"	1	17 9†
436	Bass Drum Cases ...	On Application	
440	Fibre Disk ... 14"	3	0
441	" " ... 15"	3	3
442	" " ... 16"	3	6
443	" " ... 17"	3	9
444	" " ... 22"	4	6
445	" " ... 24"	5	0
446	" " ... 26"	5	6
447	" " ... 28"	6	0
448	" " ... 30"	6	6
449	" " ... 32"	7	0
452	S.D. Case ...	1	10 0†
453	" " ...	1	4 6†
456	" " ...	17	6†
465	" Holdfast " Cymbal Suspender, 2 hooks ...	5	6
466	" Holdfast " Cymbal Suspender, 1 hook ...	4	3
467	Hook and Clamp only ...	1	9
470	" Holdfast " Spring Holder ...	5	0
472	" " Cymbal Rocker ...	5	0
473	Popular Cymbal Suspender ...	3	0
474	Junior Suspender ...	2	3
478	Chinese Wood Block, small ...	3	9
479	" " " med. ...	5	6
480	" " " large ...	8	0
482	Single Slot Woodblock ...	1	9
483	Double Slot Woodblock ...	2	9
486	Two-note Woodblock, complete ...	8	0
487	" " " only ...	4	6
488	Holder only ...	3	6
490	" Holdfast " Woodblock Holder ...	2	9
491	Popular Woodblock Holder ...	1	6
495	Single Rattle ...	3	0†
496	Double Rattle ...	4	6†
497	Three Tone Metal Whistle ...	2	0†
498	Bird Whistle ...	2	0†
499	Duck Call ...	2	6†
500	Bell Plate ...	4	0
501	Mallet ...	2	6†
502	Tambourine ...	5	0†
503	" " ...	8	3†
504	" " Jingles, per doz. prs. ...	2	9†
506	6" Triangle ...	2	6†
507	7" " ...	2	9†
508	8" " ...	3	3†
509	9" " ...	3	6†
510	Triangle Holder ...	1	6
512	Castanets ...	3	9†
513	" " ...	6	0†
514	" " ...	12	0†
517	Megaphone, pocket size ...	2	9†
518	" " 10" ...	7	3†
519	" " 12" ...	9	9†
520	" " 15" ...	12	3†
521	" " 22" ...	19	6†
522	" " collapsible ...	1	1 0†
524	Siren ...	2	3†
525	" with wrist strap ...	4	0†
526	" with horn ...	6	0†

Catalogue		Price	
No.		£	s. d.
527	Siren, with horn ...	7	6†
529	Whistle ...	1	3†
530	Cowbells, set of 3 ...	9	0†
531	" " " 4 ...	11	3†
532	Cowbells, Size 1 ...	1	3
533	" " " 2 ...	1	6
534	" " " 3 ...	2	0
535	" " " 4 ...	3	0
538	Pitch Pipe ...	2	8
540H	Tympani Sticks (cane), hard, pr. ...	6	8
540M	" " " medium, pr. ...	6	8
540S	" " " soft, pr. ...	6	8
540F	Felts only, pr. ...	2	9
541H	Tympani Stick (Hickory), hard; pr. ...	6	8
541M	" " " medium, pr. ...	6	8
541S	" " " soft, pr. ...	6	8
542	Bass Drum Stick, soft lambswool... ..	14	0
543	" " " felt ...	16	9
544	Gong Beaters ...	3	0
545A	S.D. Sticks (Hickory), pr. ...	2	6
545B	" " " " ...	2	6
545C	" " " " ...	2	6
545D	" " " " ...	2	6
546A	" " (Ebony), " ...	3	9
546B	" " " " ...	3	9
546C	" " " " ...	3	9
546D	" " " " ...	3	9
547A	2 in 1 Sticks, pr. ...	3	9
547B	" " " " ...	3	9
547C	" " " " ...	3	9
547D	" " " " ...	3	9
548A	Live Tip Sticks, pr. ...	5	0
548B	" " " " ...	5	0
548C	" " " " ...	5	0
548D	" " " " ...	5	0
553	Wire Brushes, pr. ...	5	0
555	Slap Stick, small ...	3	9
556	" " " large ...	6	0
557	Sleigh Bells ...	7	3†
558	Dog Bark ...	6	9†
559	Anvil ...	5	0†
560	Cuckoo Whistle ...	2	6†
560A	" " tunable ...	4	3†
561	Sand Blocks ...	2	6†
562	Swanee Whistle, De Luxe ...	1	10 0†
563	" " Professional ...	13	6†
564	" " Piccolo ...	5	0†
565	Flex-a-Tone ...	12	6†
565S	" " Spare Springs, per doz. ...	4	6†
565K	" " Knobs, " ...	2	0†
566	Junior Flex-a-Tone ...	5	9†
567	Clicker ...	6	6†
570	Orchestra Bells ...	4	10 0*
574	Orchestra Bell Beaters, per pr. ...	3	6†
575	Metronome ...	1	12 6†
576	Tubular Bells, 8—1 inch... ..	8	0 0*
577	" " 13—1 " ...	11	10 0*
578	" " 8—1½ " ...	11	10 0*
579	" " 13—1½ " ...	16	10 0*
580	Dance Orchestra Chimes ...	1	17 6*
580A	" " " " ...	3	0 0*
581	Light-Weight Xylophone ...	17	15 0*
582	" " " " ...	19	5 0*
584	De Luxe Xylophone ...	23	5 0*

Catalogue No.		Price	
		£	s. d.
175	Popular, Separate Tension, B.D.	30 x 12	7 0 0
176	" " " "	30 x 15	7 7 0
190	Popular Single Tension B.D.	24 x 8	4 12 6
191	" " " "	26 x 9	5 0 0
192	" " " "	26 x 12	5 5 0
193	" " " "	28 x 9	5 12 6
194	" " " "	28 x 12	5 17 6
195	" " " "	30 x 12	6 5 0
215	Popular Gong Drum,	22"	2 7 6
216	" " " "	24"	3 0 0
217	" " " "	26"	3 7 6
225	De Luxe Tympani,	22" & 25"	30 0 0
226	" " " "	25" & 28"	33 0 0
235	Popular " " "	22" & 25"	22 0 0
236	" " " "	25" & 28"	25 0 0
245	Tympani Cover for	22"	1 10 0
246	" " " "	25"	1 15 0
247	" " " "	28"	2 0 0
249	" Cases		On Application
260	De Luxe Outfit		20 0 0
261	" " with covers		22 15 0
262	Popular Outfit		11 5 0
263	" " with covers		13 12 6
264	Progressive Outfit		8 0 0
265	" " with cover		8 15 0
266	Junior Outfit		5 0 0
267	" " with stand		5 10 0
280	De Luxe Pedal, complete		1 10 0
281	" " only		1 5 0
281A	" Pedal Part		3
281B	" " "		7 6
281C	" " "		4 6
281D	" " "		6
281E	" " "		3
281F	" " "		3
283	Popular Pedal, complete		16 9
284	" " only		13 6
284A	" Part		3
284B	" " "		5 0
284C	" " "		4 0
284D	" " "		6
284E	" " "		3
284F	" " "		3
286	Foot Cymbal Pedal...		16 9
290	Collapsible Spurs, pr.		4 0
291	Premier " " "		2 9
292	Popular " " "		1 9
293	Lamb's Wool Pedal Beater		4 0
294	Felt Pedal Beater		2 6
295	" Holdfast " Pedal Cymbal Holder		2 6
296	Popular Pedal Cymbal Holder		1 9
298	Cymbal Striker		2 6
300	Concert S.D. Stand		1 13 6
301	Heavyweight Folding S.D. Stand...		1 3 6
302	Popular S.D. Stand		15 0
303	Junior S.D. Stand		10 6
308	Trap Tree		16 9
308A	Cymbal Rocker Holder for Trap Tree		1 9
308B	Cymbal Suspender		1 9
308C	Tom Tom Holder		1 9
308D	Wood Block Holder		1 9
308E	Two Note Wood Block Holder		1 9

Catalogue No.		Price	
		£	s. d.
308F	Tambourine Holder for Trap Tree		1 9
308G	Triangle Holder		1 9
308H	Cowbell Holder		1 9
308I	Trap Table		9 0
309	Trap Tree with cast base	1	10 0
312	Gong or Tom Tom Stand		16 9
313	Gong or Tom Tom Stand with cast base	1	10 0
314	Cymbal Stand with spring		16 9
315	" " rocker		16 9
316	As No. 314, but with cast base	1	10 0
317	" 315 "		1 10 0
330	Zildjian Cymbal, each	12"	2 15 0*
331	" " "	13"	3 3 6*
332	" " "	14"	3 12 6*
333	" " "	15"	3 17 6*
338	Imitation Turkish Cymbal, ea.	12"	15 0
339	" " "	13"	17 6
340	" " "	14"	1 0 0
341	" " "	15"	1 2 6
346	Spun Brass Cymbal, each	6"	1 3+
347	" " "	7"	1 6+
348	" " "	8"	2 0+
349	" " "	9"	2 3+
350	" " "	10"	3 3+
351	" " "	11"	4 6+
352	" " "	12"	5 6+
353	" " "	13"	6 6+
354	" " "	14"	7 6+
355	" " "	15"	9 6+
358	Egyptian Cymbals, per pair		17 6*
359	Cymbal Strap		0 6
362	Chinese Cymbal, each	12"	14 6
363	" " "	13"	15 6
364	" " "	14"	16 6
365	" " "	15"	17 6
370	" Gong	14"	2 2 6+
371	" " "	18"	3 2 6+
375	" Tom Tom	10"	15 9+
376	" " "	12"	1 12 0+
377	" " "	15"	2 4 0+
385	" Holdfast " Tom Tom Holder		4 3
386	Popular Tom Tom Holder		2 3
396	Drum Cover	12" x 3"	6 8+
397	" " "	14" x 3"	8 4+
398	" " "	15" x 3"	9 2+
399	" " "	14" x 4"	8 4+
400	" " "	15" x 4"	9 2+
401	" " "	14" x 5"	8 4+
402	" " "	15" x 5"	9 2+
403	" " "	15" x 10"	11 8+
404	" " "	15" x 12"	11 8+
410	" " "	22" x 4"	15 6+
411	" " "	24" x 5"	17 3+
412	" " "	26" x 5"	17 3+
415	" " "	24" x 8"	1 0 0+
416	" " "	26" x 9"	1 3 4+
417	" " "	26" x 12"	1 4 6+
418	" " "	28" x 9"	1 7 3+
419	" " "	28" x 12"	1 8 4+
420	" " "	28" x 15"	1 9 6+
421	" " "	28" x 18"	1 10 6+
422	" " "	30" x 12"	1 11 0+
423	" " "	30" x 15"	1 12 3+

Catalogue No.		Price		
		£	s.	d.
585	De Luxe Xylophone ...	25	10	0*
590	Xylophone Beaters, pair ...		7	6†
591	" " " " ...		3	3†
592	" " " " ...		3	3†
593	" " " " ...		3	3†
596	Marimba ...	On Application		
597	" " " " ...	"		
598	" " " " ...	"		
602	Soloist's Wheels, set of four ...	2	0	0
605	Tension Rod ...		1	6
606	" " " " ...		2	6
607	" " " " ...		3	0
608	" " " " ...		2	6
609	" " " " ...		3	6
610	" " " " ...		4	6
620	S.D. Flesh-hoop ...		1	3
621	B.D. " " " " ...		3	6
622	S.D. Counter-hoop ...		5	6
623	B.D. " " " " ...		15	0
625	Gardners' Method, Drums... ..		15	9*
627	" " " " Tympani		15	9*
628	Green Brothers Xylophone Method		5	6†
629	" " " " " " " "		19	0†
635	Practise Pad		3	6
636	De Luxe Snare Strainer		7	6
642	Bass Drum Rack	1	10	0
644	Silk and Wire Snares		4	0
645	Cotton and Wire Snares		2*	0
646	Gut and Wire Snares		5	0
647	Gut Snares		4	0
648	Wire Snares		2	0
651B	Super Slunk Head, 15"		4	6†
651S	" " " " " " " "		4	6†
652B	" " " " " " " " 16"		5	3†
652S	" " " " " " " "		5	3†
653B	" " " " " " " " 17"		8	6
653S	" " " " " " " "		8	6†

Catalogue No.		Price		
		£	s.	d.
654B	Super Slunk Head, 18"		9	9†
654S	" " " " " " " "		9	9†
655B	" " " " " " " " 19"		11	0†
655S	" " " " " " " "		11	0†
658	White Calf, 28"		1	4 0†
659	" " " " 30"		1	7 0†
660	" " " " 32"		1	10 0†
661	" " " " 34"		1	13 0†
662	" " " " 36"		1	16 0†
663	" " " " 38"		1	19 0†
665	Tympani Heads, 26"		1	7 0†
666	" " " " 28"		1	11 6†
667	" " " " 32"	2	3	0†
671B	Popular Buck Heads, 15"		3	9†
671S	" " " " " " " "		3	9†
672B	" " " " " " " " 16"		4	6†
672S	" " " " " " " "		4	6†
673B	" " " " " " " " 17"		5	9†
673S	" " " " " " " "		5	9†
674B	" " " " " " " " 18"		6	6†
674S	" " " " " " " "		6	6†
675B	" " " " " " " " 19"		7	3†
675S	" " " " " " " "		7	3†
680	" " " " " " " " 24"		12	0†
681	" " " " " " " " 28"		17	0†
682	" " " " " " " " 30"		19	0†
683	" " " " " " " " 32"	1	1	0†
684	" " " " " " " " 34"	1	3	0†
685	" " " " " " " " 36"	1	5	0†
686	" " " " " " " " 38"	1	7	0†
690	Lapping Tool		2	9†
692	Horse Trot Imitator		9	6*
694	Trap Tray for B.D.	1	13	6
700	Carrying Strap for 24" B.D.		7	6†
701	" " " " 26" B.D.		7	6†
702	" " " " 28" B.D.		7	6†
703	" " " " 30" B.D.		7	6†

Prices subject to change without notice.

