

*"I play Premier because they know how to make a snare drum that sounds just great for every occasion."*

**Arnold Riedhammer**  
Munich Philharmonic Orchestra



*"I like the extremely rich and deep but warm sound of the concert bass drum in piano and also in forte. The cradle allows for the perfect set-up."*

**Michael Schumm Haggard**



*"Tredegar Town Band feel pleased and privileged to be able to team up with an iconic British brand such as Premier. We feel that Tredegar and Premier are forward thinking organisations, both committed to very high standards."*

**Steve Barnett**  
Tredegar Town Band

*"I have been using Premier instruments for gigs, concerts and recordings for a long time. These instruments always give me total satisfaction during my performances thanks to their great quality of sound and projection and ease of transportation. I highly recommend Premier instruments to all my fellow percussionists."*

**William Ramos**  
Independent



*"The Premier Elite Series timpani give me the possibility to play all styles of music without any limit, and makes me so comfortable I feel like I am at home all over the world."*

**Frederic Macarez**  
Orchestre De Paris



*"From my oldest Premier kit, a legendary Resonator, to my Elite Series timpani, Premier's instruments are reliable and deliver night after night, show after show. If you want the best, choose Premier, nothing else comes close."*

**Stephan Schott**  
Independent

*"From my first professional gig, there were always Premier instruments - not only did I consider myself fortunate to play those fantastic instruments, they became my reference in quality and sound."*

**Martin Esser**  
Independent





## AN UNRIVALLED HISTORY

Premier's reputation in orchestral music may be traced back to its very earliest years when soon after its inception in 1922, the company began to craft a variety of orchestral instruments to add to its highly sought after range of jazz drumsets. It didn't take long before Premier led the way in the manufacture of timpani, tuned percussion and concert accessories. The instruments echoed the proud claims of quality for which the drum sets were already famous: BRILLIANCE - PERFORMANCE - RELIABILITY - DURABILITY. Premier instruments quickly attracted world-famous ensembles and musicians and were heard all over the world. Premier timpani soon became the preferred choice of leading orchestras everywhere. At least one professional orchestra in every country has played Premier timpani and through so many proud and prolific endorsers, Premier became the leaders in the world of orchestral percussion.

As well as the design and build of timpani, xylophones, vibraphones, marimbas, chimes, orchestral bells and orchestral snares, bass drums and toms, Premier has also crafted its own tambourines, maracas, claves and castanets. Premier's orchestral instruments have pioneered, supported and advanced performance on percussion in a way and for so many years, that very few other companies can claim.

Over eight decades of success and history have provided an inimitable wealth of specialist knowledge of musical instrument manufacture and inspires a passion and pride in everyone involved with the company. Percussion is used in so many musical genres and ensembles: classical orchestras, jazz bands, brass bands, wind bands, military bands, pipe bands, pop and rock bands and of course in percussion ensembles. Looking forward, Premier has a renewed commitment to the crafting of orchestral instruments of the highest quality and while always supported by our strong heritage, we continue to use the latest technology and creative inspiration to enable innovation to satisfy the demands of today's players.


## A BRIGHT FUTURE

With over 80 countries stocking Premier, percussionists around the world have greater access than ever to these great instruments. To locate your nearest dealer visit the official Premier website at [orchestral.premier-percussion.com](http://orchestral.premier-percussion.com).

The site has been redesigned to include all of the information you could wish for on Premier – products, specifications, spare parts, artists, news and events. Register online for exclusive Premier news direct to your inbox.

Get closer to Premier by joining thousands of other fans following the official Premier social networking sites. Just search for 'Premier – Official' on Facebook or 'premier\_drummer' on Twitter for the latest information on Premier as it happens. Interact directly with Premier and help shape the future of Premier and its instruments for years to come.

 premier - official

 premier\_drummer

[premier-percussion.com](http://premier-percussion.com)



## SPARE PARTS

Premier's ongoing commitment to worldwide customer service has led to an innovative spare parts solution through [orchestral.premier-percussion.com](http://orchestral.premier-percussion.com).

Every product page within the website features a 'Spare Parts tab'. Within this every spare part is listed in the form of a clear line drawing. Clicking on the chosen spare part presents detailed information including stock code and quantity per pack.

All spare parts are readily available and can be ordered via Premier's international distributor and dealer network ensuring that your Premier product can be serviced and maintained for years to come.

# ELITE SERIES

PROFESSIONAL COPPER TIMPANI



Elite Series timpani are Premier's ultimate professional instruments. Their unique combination of characteristics is the reason why so many world-class orchestras and their principal timpanists have chosen over the years to play Elite timpani. The Philharmonia Orchestra, Moscow Philharmonic, Bolshoi Ballet, Orchestra de Paris, and Stockholm Opera, are among the list of many orchestras that play Premier Elites.

These highest-quality instruments are also often used in brass and wind ensembles as well as by the talented percussion students

at music schools and universities such as the Royal College of Music in London and the Paris Conservatoire.

The key feature of the Elite Series is the three inch oversized head and counterhoop. This produces an outstanding resonance, projection and sound quality across a range of one full octave.

Premier's uniquely designed pedal action enables you to feel the note as you tune to it as the pressure increases and the head tensions. Different from a standard balanced

action pedal, this superior feature improves performance. As you become more familiar with the pedal, the less you need to rely on the tuning gauge.

The tuning gauge is easy to set, easy to see (the viewing angle is also adjustable) and can be positioned on either side of the timpani to accommodate both International and German playing set-ups. It has an adjustable pointer and an additional fast adjustment, useful for tackling tuning shifts due to changes in temperature and humidity.





5932



5928



5925



- 3" extended head, gives outstanding resonance and projection across one whole octave
- Suspended copper bowl - hand spun and polished mirror finish parabolic copper bowl
- Foot operated fine-tuner, allowing additional & accurate adjustment of the overall tuning
- Premier pedal action, smooth, simple and accurate
- Extremely durable, hard-wearing frame, powder-coated struts and base

- Precision radial rods gauged for consistent pull and alignment
- Bearing edge carefully waxed, smoothed and polished to provide a precise tuning action
- Chrome plated counterhoop with insulating felt lining
- Easy adjustable tuning gauge
- Height adjustable braked castors
- Renaissance heads by Remo USA, for a sound of the highest quality
- Supplied with deluxe cover and tuning key

## ELITE SERIES

5922	22.5" Copper Bowl (C3 - C4)
5925	25" Copper Bowl (A2 - A3)
5928	28" Copper Bowl (F2 - F3)
5930	30" Copper Bowl (D2 - D3)
5932	32" Copper Bowl (C2 - C3)

# PRO-SYMPHONIC SERIES

PROFESSIONAL COPPER TIMPANI



5728



5725

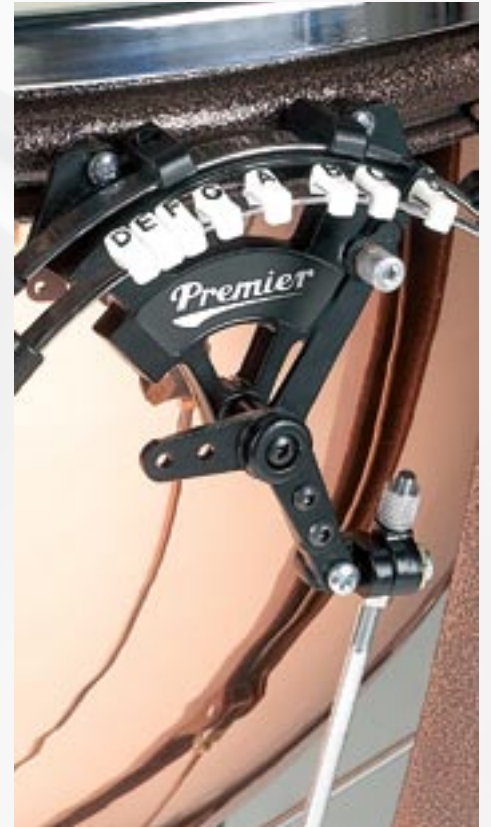
Pro-Symphonic Series timpani are professional, high-quality instruments for those preferring a conventional sized head. All other aspects of the top-of-the-range Elite timpani are mirrored in the Pro-Symphonic: the hand-spun, parabolic, polished and lacquered copper bowls are the industry optimum for sound. The bowl is also freely supported so that none of this sound quality is lost.

There is a foot-operated fine-tuning wheel that can shift or fractionally adjust pitch within each timpani's range of one seventh. The perfectly balanced link rods from pedal to head deliver equal pull and release for silent and measured tuning. Castors are braked and height adjustable to enable slope adjustment. The Premier action pedal grip rod benefits from newly introduced centre-less polishing, finished off with chrome plated safety stop.

The felt-lined counterhoop and tension bolts are also chrome plated, ensuring this instrument is of the highest quality down to the smallest details.

Many timpanists choose Premier Pro-Symphonic timpani for their excellent sound when played with synthetic heads.





- Suspended copper bowl - Hand spun and polished mirror finish parabolic copper bowl
- Foot operated fine-tuner, allowing additional & accurate adjustment of the overall tuning
- Premier pedal action, smooth, simple and accurate
- Extremely durable, hard-wearing frame, powder-coated struts and base
- Precision radial rods gauged for consistent pull and alignment

- Bearing edge carefully waxed, smoothed and polished to provide a precise tuning action
- Chrome plated counterhoop with insulating felt lining
- Easy adjustable tuning gauge
- Height adjustable braked castors
- Renaissance heads by Remo USA, for a sound of the highest quality
- Supplied with deluxe cover and tuning key

## PRO-SYMPHONIC SERIES

5722	22.5" Copper Bowl (C3 - B3)
5725	25" Copper Bowl (A2 - G#3)
5728	28" Copper Bowl (F2 - E3)
5730	30" Copper Bowl (D2 - C#3)
5732	32" Copper Bowl (C2 - B2)

# CONCERT SERIES COPPER

POLISHED COPPER TIMPANI | SATIN COPPER TIMPANI



POLISHED COPPER

5428

5425

Concert Series copper timpani appeal to all types of players and ensembles where the projection and sound quality of a copper bowl is required alongside a realistic budget. The bowls come in all five Premier sizes and are hand-spun, polished, lacquered and freely supported, so none of the projection is damped.

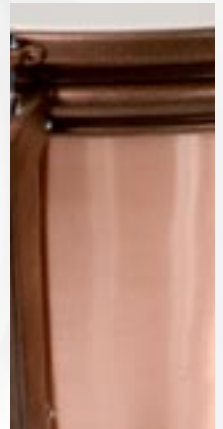
To maximize its acoustic capabilities, every Concert Series timpani is fitted with an opaque Remo head, and a felt-lined, powder-coated

counterhoop. The base casting is a single piece, as are the leg struts so any interference through rattling parts is avoided. The perfectly balanced radial rods deliver soundless tuning when tensioning and slackening the head by means of the trademark Premier action pedal.

The easy-to-read tuning gauge can be adjusted for German or International set-ups and represents the range of one sixth available across each timpani.

Concert Series timpani have braked, heavy-duty castors and come complete with a tuning key.





SATIN COPPER



- Suspended hand spun parabolic copper bowl, available in either polished mirror or satin finish
- Premier pedal action, uniquely designed; an identical feature to that found on both Elite and Pro-Symphonic Series
- Extremely durable, hard-wearing frame, powder-coated struts and base
- Precision radial rods gauged for consistent pull and alignment

- Bearing edge carefully waxed, smoothed, and polished to provide a precise tuning action
- Powder-coated counterhoop with insulating felt lining
- Braked castors
- Opaque heads by Remo USA, providing a great sound
- Supplied with tuning key

**CONCERT SERIES COPPER**

5422	22.5" Copper Bowl (C3 - A3)
5425	25" Copper Bowl (A2 - F#3)
5428	28" Copper Bowl (F2 - D3)
5430	30" Copper Bowl (D2 - B2)
5432	32" Copper Bowl (C2 - A2)
5422S	22.5" Satin Copper Bowl (C3 - A3)
5425S	25" Satin Copper Bowl (A2 - F#3)
5428S	28" Satin Copper Bowl (F2 - D3)
5430S	30" Satin Copper Bowl (D2 - B2)
5432S	32" Satin Copper Bowl (C2 - A2)

# CONCERT SERIES

ALUMINIUM TIMPANI | FIBREGLASS TIMPANI



Premier's Concert Series aluminium timpani provide a lighter-weight alternative to the copper bowl model, which is very useful where timpani have to be moved around to different rooms and locations. However, the aluminium bowl still provides excellent projection and sound quality. They are also very well priced for organisations where budget is a primary consideration.

This series is very popular in schools and colleges, where instruments are often moved around from classroom to concert

hall and are played by numerous students at all stages of their musical education. The National Youth Orchestra of Great Britain, for example, have always played Premier timpani. The Concert Series timpani are also popular in brass and wind ensembles where a budget may be in place and for whom frequent transport is a consideration.

To maximize its acoustic capabilities, every Concert Series timpani is fitted with an opaque Remo head, and a felt-lined, powder-coated counterhoop. The base casting

is a single piece, as are the leg struts so any interference through rattling parts is avoided. The perfectly balanced radial rods deliver soundless tuning when tensioning and slackening the head by means of the trademark Premier action pedal.

The easy-to-read tuning gauge can be adjusted for German or International set-ups and represents the range of one sixth available across each timpani.





FIBREGLASS TIMPANI

- Suspended aluminium/fibreglass bowl
- Premier pedal action, uniquely designed; an identical feature to that found on both Elite and Pro-Symphonic Series
- Extremely durable, hard-wearing frame, powder-coated struts and base
- Precision radial rods gauged for consistent pull and alignment
- Bearing edge carefully waxed, smoothed, and polished to provide a precise tuning action
- Power-coated counterhoop with insulating felt lining
- Braked castors
- Opaque heads by Remo USA, providing a great sound
- Supplied with tuning key

## CONCERT SERIES ALUMINIUM/FIBREGLASS

5352	22.5" Aluminium Bowl (C3 - A3)
5355	25" Aluminium Bowl (A2 - F#3)
5358	28" Aluminium Bowl (F2 - D3)
5360	30" Aluminium Bowl (D2 - B2)
5432	32" Aluminium Bowl (C2 - A2)
5322-2	22.5" Fibreglass Bowl (C3 - A3)
5325-2	25" Fibreglass Bowl (A2 - F#3)
5328-2	28" Fibreglass Bowl (F2 - D3)
5330-2	30" Fibreglass Bowl (D2 - B2)
5332-2	32" Fibreglass Bowl (C2 - A2)

# ORCHESTRAL SERIES

HONDURAS ROSEWOOD MARIMBA | HONDURAS ROSEWOOD XYLOPHONE



02RM500

## 5.0 OCTAVE HONDURAS ROSEWOOD MARIMBA

- Honduras rosewood note bars, hand tuned in the UK. Graduated width: 68-38mm / Graduated thickness: 25-22mm
- Note range: C2 – C7
- Smooth, handle-operated height adjustment. Height adjustment: 895-985mm
- Elegant, height adjustable, silver arched resonators
- Braked castors
- 7-piece case set for easy transport available separately (02CASE/5)
- Pitch: A=442Hz (A=440 and A=443 available upon request)
- Frame length: 2540mm  
Frame width: 1050mm (low end)  
520mm (high end)



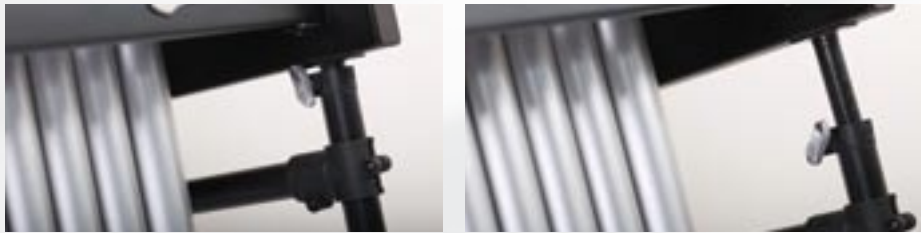
Premier's 5.0 octave marimba is superbly finished with a magnificent sound. The note bars, made from the highest quality Honduras rosewood, are 'stretch' tuned so that they become progressively sharper as you move up the instrument which is more pleasing to the ear than basic equal-temperament tuning. All tuning is carried out by hand in carefully controlled conditions of temperature and humidity in the UK.

The sound projection of the notes can be controlled by its beautiful silver aluminum resonators, which can be adjusted in height. Whilst the instrument is fully height adjustable by way of a smooth-operated handle, found on either end of the frame.

For transportation purposes, the marimba can be easily disassembled and stored in a 7-piece case set (available separately).

The Orchestral Series 5.0 octave marimba provides an inimitable sound adored in concert halls. The warm yet striking tone of this instrument sounds fabulous in symphonic, brass bands, multi-percussion and solo repertoire.





02RX400

**4.0 OCTAVE HONDURAS  
ROSEWOOD XYLOPHONE**

- Honduras rosewood note bars, hand tuned in the UK.  
Graduated width: 54-38mm /  
Graduated thickness: 25-22mm
- Height adjustment: 800-920mm
- Elegant, height adjustable, silver arched resonators
- Braked castors
- Pitch: **A=442Hz**  
(A=440 and A=443 available upon request)
- Frame length: **1640mm**  
Frame width: **850mm** (low end)  
**330mm** (high end)

**MARIMBA / XYLOPHONE**

<b>02RM500</b>	<b>5.0 Octave Honduras Rosewood Marimba (C2 - C7)</b>
<b>02RX400</b>	<b>4.0 Octave Honduras Rosewood Xylophone (C4 - C8)</b>

With its marvelous tone, the 4.0 octave xylophone is an instrument to be proud of. Featuring high-quality Honduras rosewood note bars, hand-tuned in the UK, the xylophone provides the perfect sound in any musical situation.

The frame is fully height adjustable for the player and features silver aluminium graduated resonators.

The Orchestral Series 4.0 octave xylophone provides an inimitable sound adored in concert halls. The warm yet striking tone of this instrument makes it perfect for symphonic, brass bands, multi-percussion and solo repertoire.



# ORCHESTRAL SERIES

ROSEWOOD MARIMBA | PADOUK XYLOPHONES



02RLM430



The 4.3 octave marimba offers an exceptional choice for professional and student soloists alike. Whether played in a symphonic, percussion, brass or wind ensemble or in theatre shows, musicals or drum corps, the Orchestral Series provides outstanding performance at an affordable price.

An enormously popular model, the 4.3 octave marimba has a range of A2 – C7 and features light rosewood note bars. It's fully height-adjustable with elegant resonators ensuring impressive sound projection.

## 4.3 OCTAVE ROSEWOOD MARIMBA

- Light rosewood note bars.  
Graduated width: 54-38mm  
Graduated thickness: 25-22mm
- Note range: A2 – C7
- Height adjustment: 800-920mm
- Elegant, silver arched resonators
- Braked castors
- Pitch: A=442Hz
- Frame length: 1770mm  
Frame width: 800mm (low end)  
350mm (high end)

## MARIMBA / XYLOPHONES

02RLM430	4.3 Octave Rosewood Marimba (A2 - C7)
02PX350	3.5 Octave Padouk Xylophone (F4 - C8)
02PX350C	3.5 Octave Padouk Cased Xylophone (F4 - C8)





02PX350



02PX350C



The 3.5 octave xylophone is available in two options; with a portable frame or cased. It is ideal for conservatoires, schools, band rooms and students, offering excellent sound quality, durability and portability.

### 3.5 OCTAVE PADOUK XYLOPHONE

- **Padouk note bars**  
Width: 38mm / Thickness: 20mm
- **Note range: F4 – C8**
- **Height adjustment (02PX350):**  
790-845mm
- **Elegant, silver arched resonators**  
(02PX350 only)
- **Braked castors** (02PX350 only)
- **Pair of mallets included**

- **Cover included** (02PX350 only)
- **Pitch: A=442Hz**
- **Folding frame**  
Frame length: 1350mm / Frame width:  
560mm (low end) 320mm (high end)
- **Case model includes hard-wearing portable case with carry handle**  
Case length: 1290mm / Case width:  
630mm (low end) 275mm (high end)  
Case height: 122mm  
Weight: 10kg

# ORCHESTRAL SERIES

CHIMES | GLOCKENSPIEL | VIBRAPHONE



0885BBK



0885BK



0895BBK



Premier Orchestral Chimes are made of brass tubes and provide authentic bell sounds without having to use huge church bells. Premier chimes are available chrome plated or in natural brass and the improved damping mechanism provides accurate and immediate damping as soon as the pedal is released.

All models feature two mallet holders and a pair of high-quality mallets is included. The robust yet elegant frame is as at home in concert halls as it is on the field and at outdoor events, all chimes being perfectly weather resistant. For extra protection during storage, a deluxe, padded full-length drop-cover is provided.

Premier's world-class chimes provide a superlative sound making them the first choice of world leading ensembles such as the Frankfurt Opera.

## STANDARD AND EXTENDED CHIMES

- Polished chrome plated brass or clear lacquered brass detachable bells  
Bell diameter: 38mm
- Mallet holders
- Full width damper pedal
- Pair of mallets included
- Cover included

## CHIMES

0885BK	Standard Range Chrome Chimes (C5 - F6)
0885BBK	Standard Range Brass Chimes (C5 - F6)
0895BK	Extended Range Chrome Chimes (A#4 - G6)
0895BBK	Extended Range Brass Chimes (A#4 - G6)

When ordering this instrument, please specify your desired tuning, from A440 (A0), A442 (A2) or A443 (A3); For example 0885BK/A2.



Glockenspiels are symphonic bells primarily used in orchestras and symphonic wind bands but also common in pop music today. The note bars are aluminium alloy, with great sustain and bright sound.

## 2.5 OCTAVE ALUMINIUM ALLOY GLOCKENSPIEL

- Aluminium alloy note bars  
Width: 32mm / Thickness: 10mm
- Note range: G5 – C8
- Hard wearing portable case
- Mini rubber pegs for minimum contact
- Pair of mallets included
- Pitch: A=442Hz
- Folding glockenspiel stand available separately (6804)
- Case length: 825mm / Case width: 523mm (low end) 280mm (high end)  
Case height: 112mm
- Weight: 10kg



02AG250

02AG250

## GLOCKENSPIEL

02AG250

2.5 Octave Aluminium Glockenspiel (G5 - C8)

## VIBRAPHONE

02AV300/A2

3.0 Octave Vibraphone (F3 - F6)

The Orchestral Series vibraphone is a superb sounding instrument which combined with its easy transportability, makes it the perfect choice for freelance and student performers. It has three widths of graduated note bars, hand tuned and manufactured in the highly acclaimed Premier aluminum alloy across its three octave range. The smooth motor controls the fan-shafts with such precision that the discs below both the chromatic and diatonic note rows constantly rotate at the same angle, producing the highest quality vibraphone sound. The damper pedal's angle is changeable, and the wheeled frame is fully height adjustable as well, ensuring the most comfortable playing position for all players.

## 3.0 OCTAVE VIBRAPHONE

- Range: (F3 – F6)
- Tuning: A442



# ORCHESTRAL SERIES

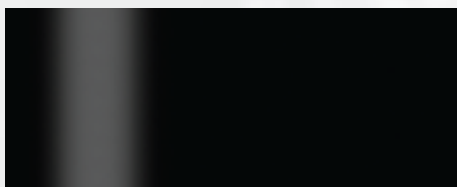
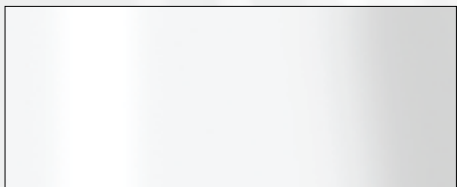
ORCHESTRAL BASS DRUMS | CONCERT TOMS | ORCHESTRAL SNARE DRUMS



0166DW



0176EBC



Choice of three Gloss Lacquer finishes; Dark Walnut Lacquer (DW), Ivory White Lacquer (IWC) and Ebony Black Lacquer (EBC)

Premier orchestral bass drums can be heard in theatres, concert halls, conservatoires and schools all around the world. Its birch shell with internal support hoop delivers an unrivalled, rich and penetrating sound.

With a choice of high-tension die-cast lugs for a comprehensive range of tuning possibilities or the new turnbuckle system allowing equal tuning on both sides.

## ORCHESTRAL BASS DRUMS

- 4mm with 4.8mm support hoop birch shell, internally lacquered
- Choice of three gloss lacquer finishes
- Renaissance drumheads by Remo, USA

## ORCHESTRAL BASS DRUMS

0166

**36" x 16" Orchestral Bass Drum**

0176

**36" x 16" Orchestral Turnbuckle Bass Drum**





Premier's concert toms are designed for theatres and concert halls around the world. Featuring 6-ply birch shells and a premium lacquer finish, these concert toms are available in a range of eight sizes, delivering a fantastic punch from the deepest to the highest tone. Perfect for all musical performances.

#### CONCERT TOMS

- 6-ply lacquered birch shell
- Stunning dark walnut lacquer finish
- Drumheads by Remo, USA
- Only available in Dark Walnut finish



The orchestral snare drums hark back to yesteryear with beautiful tube lugs and smooth action Dunnett snare strainers. These drums feature a distinct snare bed profile that works in harmony with our unique bearing edge, to create increased sensitivity, a more versatile tuning range and reduced rattle snare.

#### ORCHESTRAL SNARE DRUMS

- 6mm 6-ply North American lacquered maple shell - internally lacquered
- 2.3mm triple-flange steel hoops
- Diamond Chrome tube lugs
- Legendary 'P' badge
- Drumheads by Remo
- Only available in Dark Walnut finish

#### ORCHESTRAL SNARE DRUMS

2631DW	14" x 4" Snare Drum
2633DW	14" x 5.5" Snare Drum
2636DW	14" x 7" Snare Drum

#### CONCERT TOMS

6706DW	6" x 7" Concert Tom
6708DW	8" x 8" Concert Tom
6710DW	10" x 9" Concert Tom
6712DW	12" x 10" Concert Tom
6713DW	13" x 11" Concert Tom
6714DW	14" x 12" Concert Tom
6715DW	15" x 13" Concert Tom
6716DW	16" x 14" Concert Tom

# MALLETS

MARIMBA | VIBRAPHONE | XYLOPHONE | GLOCKENSPIEL



**950136**  
Very-Hard Marimba Mallets  
420mm Maple Shaft



**950137**  
Hard Marimba Mallets  
420mm Maple Shaft



**950138**  
Medium-Hard Marimba Mallets  
420mm Maple Shaft



**950139**  
Medium Marimba Mallets  
420mm Maple Shaft



**950140**  
Medium-Soft Marimba Mallets  
420mm Maple Shaft



**950141**  
Soft Marimba Mallets  
420mm Maple Shaft



**950142**  
Hard Marimba Mallets  
420mm Rattan Shaft



**950143**  
Medium-Hard Marimba Mallets  
420mm Rattan Shaft



**950144**  
Medium Marimba Mallets  
420mm Rattan Shaft



**950145**  
Medium-Soft Marimba Mallets  
420mm Rattan Shaft



**950146**  
Soft Marimba Mallets  
420mm Rattan Shaft



**950152**  
Hard Vibraphone Mallets  
Maple Shaft



**950153**  
Medium-Hard Vibraphone Mallets  
390mm Maple Shaft



**950154**  
Medium Vibraphone Mallets  
390mm Maple Shaft



**950155**  
Medium-Soft Vibraphone Mallets  
390mm Maple Shaft





**950156**  
Hard Vibraphone Mallets  
390mm Rattan Shaft



**950157**  
Medium-Hard Vibraphone Mallets  
390mm Rattan Shaft



**950158**  
Medium Vibraphone Mallets  
390mm Rattan Shaft



**950159**  
Medium-soft Vibraphone Mallets  
390mm Rattan Shaft



**950135**  
Rosewood Xylophone Mallets  
420mm Maple Shaft



**950147**  
Hard Xylophone Mallets  
420mm Maple Shaft



**950148**  
Medium-Hard Xylophone Mallets  
420mm Maple Shaft



**950149**  
Medium Xylophone Mallets  
420mm Maple Shaft



**950150**  
Medium-Soft Xylophone Mallets  
420mm Maple Shaft



**950151**  
Soft Xylophone Mallets  
420mm Maple Shaft



**950130**  
18mm Brass  
Glockenspiel Mallets  
330mm Maple Shaft



**950131**  
16mm Brass  
Glockenspiel Mallets  
330mm Maple Shaft



**950132**  
18mm Aluminium  
Glockenspiel Mallets  
330mm Maple Shaft



**950133**  
22mm Resin  
Glockenspiel Mallets  
330mm Maple Shaft



**950134**  
22mm Polymer  
Glockenspiel Mallets  
330mm Maple Shaft



**0588**  
Rawhide Chimes Mallets

# ACCESSORIES

CASES | COVERS | HEADS | TUNING KEYS | STANDS

Premier covers and cases are designed to protect your instrument either in storage or transit. Manufactured to the highest quality, these instrument covers and cases are hard-wearing and designed to last.



02CASE/5

Opaque timpani heads deliver great projection, with a bright, clear, focused sound. Suitable for all types of performance, Opaque timpani heads offer a suitable alternative for those on a budget.



Renaissance timpani heads provide a warm, dark and focused sound, for a resonance of the highest quality. Combining the look and feel of calfskin with the tonal consistency of synthetic materials, Renaissance timpani heads are perfect for symphonic, concert and orchestral scenarios.



1211

## RENAISSANCE TIMPANI HEADS

For use on Elite Series timpani

8E35660	22.5" Renaissance Head
8E35711	25" Renaissance Head
8E35787	28" Renaissance Head
8E35838	30" Renaissance Head
8E35889	32" Renaissance Head

## RENAISSANCE TIMPANI HEADS

For use on Pro-Symphonic and Concert Series timpani

8E35597	22.5" Renaissance Head
8E35660	25" Renaissance Head
8E35736	28" Renaissance Head
8E35787	30" Renaissance Head
8E35838	32" Renaissance Head

## OPAQUE TIMPANI HEADS

For use on Pro-Symphonic and Concert Series timpani

8E31597	22.5" Opaque Head
8E31660	25" Opaque Head
8E31736	28" Opaque Head
8E31787	30" Opaque Head
8E31838	32" Opaque Head





2227



4227

0613



9913

Premier offers two tuning keys for your instrument; timpani or drum.

## TUNING KEYS

**0613 Drum Tuning Key**

**9913 Timpani Tuning Key**



0850

0725



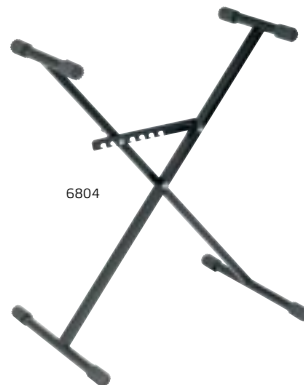
2211



4211



1464



6804



6908

Premier provides a full range of stands and cradles for your orchestral instrument needs. Concert snare and double tom stands are available as single-braced (2000 Series) or double-braced (4000 Series) for maximum stability in performance.

The orchestral bass drum cradle ensures that the bass drum is comfortable to play for all players whilst the bass drum trolley offers portability and ease of set-up.

All stands and cradles can be easily collapsed for transportation requirements.

## INSTRUMENT COVERS & CASES

1211	<b>22.5" - 25" Timpani Cover</b> (22.5" Elite)
1212	<b>28" - 30" Timpani Cover</b> (25" - 28" Elite)
1213	<b>32" Timpani Cover</b> (30" - 32" Elite)
0724	<b>4.3 / 4.0 Octave Keyboard Cover</b>
0725	<b>3.5 / 3.0 Octave Keyboard Cover</b>
0850	<b>Standard Chimes Cover</b>
02CASE/5	<b>Case Set for 5.0 Octave Marimba</b>
6804	<b>Orchestra Bass Drum Trolley</b>

## STANDS AND CRADLES

2211	<b>2000 Series Concert Snare</b>
4211	<b>4000 Series Concert Snare Stand</b>
*2227	<b>2000 Series Double Tom Stand</b> (single braced)
**4227	<b>4000 Series Double Tom Stand</b> (double braced)
1464	<b>Orchestra Bass Drum Cradle</b>
6804	<b>Folding Glockenspiel Stand</b>
6908	<b>Orchestra Bass Drum Trolley</b>

\* Includes 2227BASE plus 2296 tom holder

\*\* Includes 4227BASE plus 2296 tom holder

# EDUCATIONAL

TIMPANI, STUDENT PERCUSSION KITS & KEYBOARDS



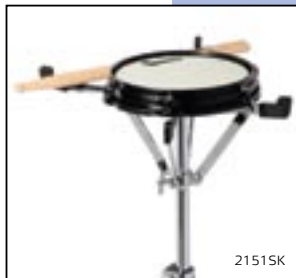
## ACADEMY SERIES

Premier Academy Series timpani are ideal for schools, teachers and ensembles that require good tone and ease of transport. They provide an exceptional basis for learning two important areas of timpani playing: tuning and relative pitch.

The tuning handles are fixed making them impossible to lose and the three legs are adjustable for height and tilt to suit all playing positions. The legs also have the added advantage of retracting inside the body of the instrument for compact storage. These instruments have an excellent tone with minimal service and maintenance required. The powder coated fittings make them extremely durable and a great choice for those who are starting in the art of timpani playing.

### ACADEMY SERIES

- 5222-2 22.5" Fibreglass Bowl C3-A3
- 5225-2 25" Fibreglass Bowl A2-F3
- 5228-2 28" Fibreglass Bowl F2-D3
- 5230-2 30" Fibreglass Bowl D2-B2



### PERCUSSION KITS

- 2150SK Student Snare Drum Kit
- 2151SK Student Bell Kit

#### STUDENT SNARE DRUM KIT

Featuring a 14" x 5.5" steel shell snare drum that provides a crisp response and full sound, Premier's versatile student snare drum kit comes complete with stand, sticks and practice pad; packing neatly into a convenient and comfortable backpack for ease of portability.

This flexible snare drum is perfect for use in concert bands, orchestral pits or stand-alone to practice rudimental and solo techniques.

- 14" x 5.5" steel shell snare drum
- Stand, sticks, mallets, music stand and 8" practice pad included
- Backpack

#### STUDENT BELL KIT

Comprising of a 2.5 octave glockenspiel, stand, mountable practice pad and music stand, Premier's student bell kit is also supplied with drum sticks and mallets; fitting into a tailored carry case with wheels and comfortable carry handles.

The student bell kit is perfect for the beginner as it encourages stick technique, rhythmic and rudimental development and familiarity with note placement.

- 2.5 octave - 32 note glockenspiel
- Stand, sticks, mallets, music stand and 8" practice pad included
- Pull-along carry case







### STUDENT COMBINATION KIT

Providing a complete learning experience, Premier's student combination kit offers all the benefits of the student snare and student bell kits, combined with a sturdy and comfortable pull-along case, which also has room for music and books.

Featuring a 14" x 5.5" steel shell snare drum that provides a crisp response and full sound, a 2.5 octave glockenspiel, stand, practice pad, drum sticks, mallets and music stand; this complete kit offers students the perfect option to practice 'on the move'.

- 2.5 octave - 32 note glockenspiel
- 14" x 5.5" steel shell snare drum
- 8" practice pad
- 14" silent pad
- Snare drum, glockenspiel and music stand included
- Sticks and mallets included
- Pull-along carry case

### PERCUSSION KITS

2152SK Student Combination Kit

### 3.0 OCTAVE PADOUK XYLOPHONE

- 1.25" Padouk note bars
- Built-in resonant chamber
- Approximate dimensions: 965mm x 584mm
- Xylophone mallets included
- Pitch: A=442Hz

### 3.0 OCTAVE PADOUK MARIMBA

- Graduated Padouk note bars
- Built-in resonant chamber
- Approx overall size: 1168mm x 610mm
- Marimba mallets included
- Pitch: A=442Hz

### XYLOPHONE / MARIMBA

PX300T 3.0 Octave Padouk Xylophone (F1 - F4)

PM300T 3.0 Octave Padouk Marimba (C1 - C4)

### 3.0 OCTAVE STUDENT KEYBOARDS

Designed to encourage students to develop correct technique and become accustomed to the feel of real wooden keys, Premier's student keyboards enable smooth transition from a student bell kit to full size concert instrument.

Supplied complete with rubber feet for desktop use, or perfect for stand or frame mounting these affordable, professionally tuned instruments offer the best quality of build and sound on the market. As useful at home as in the classroom, Premier's student keyboards are the ideal instruments to practice reading, scales, chords and audition material.



PM300T

# SPECIFICATIONS

TIMPANI - ELITE SERIES | PRO-SYMPHONIC SERIES | CONCERT SERIES

## ELITE SERIES

	22½"	25"	28"	30"	32"
Height	32" / 81cm	32" / 81cm	32" / 81cm	32" / 81cm	32" / 81cm
Overall Diameter	31" / 79cm	33" / 84cm	36" / 92cm	38" / 97cm	40" / 102cm
Weight	75lb / 34kg	79lb / 36kg	95lb / 43kg	97lb / 44kg	101lb / 46kg
Tuning Range	C3 - A4	A2 - A3	F2 - F3	D2 - D3	C2 - C3
Struts	6	8	8	8	8
Renaissance Timpani Heads	8E35660	8E35711	8E35787	8E35838	8E35889
Covers	1211	1212	1212	1213	1213
Code	5922	5925	5928	5930	5932

## PRO-SYMPHONIC SERIES

	22½"	25"	28"	30"	32"
Height	32" / 81cm	32" / 81cm	32" / 81cm	32" / 81cm	32" / 81cm
Overall Diameter	28" / 71cm	31" / 79cm	34" / 87cm	36" / 92cm	38" / 97cm
Weight	68lb / 31kg	75lb / 34kg	77lb / 35kg	97lb / 44kg	101lb / 46kg
Tuning Range	C3 - B3	A2 - G#3	F2 - E3	D2 - C#3	C2 - B2
Struts	6	6	6	8	8
Renaissance Timpani Heads	8E35597	8E35660	8E35736	8E35787	8E35838
Opaque Timpani Heads	8E31597	8E31660	8E31736	8E31787	8E31838
Covers	1211	1211	1212	1212	1213
Code	5722	5725	5728	5730	5732

## CONCERT SERIES POLISHED COPPER

	22½"	25"	28"	30"	32"
Height	32" / 81cm	32" / 81cm	32" / 81cm	32" / 81cm	32" / 81cm
Overall Diameter	28" / 71cm	31" / 79cm	34" / 87cm	36" / 92cm	38" / 97cm
Weight	68lb / 31kg	75lb / 34kg	77lb / 35kg	97lb / 44kg	101lb / 46kg
Tuning Range	C3 - A3	A2 - F#3	F2 - D3	D2 - B2	C2 - A2
Struts	6	6	6	8	8
Renaissance Timpani Heads	8E35597	8E35660	8E35736	8E35787	8E35838
Opaque Timpani Heads	8E31597	8E31660	8E31736	8E31787	8E31838
Covers	1211	1211	1212	1212	1213
Code	5422	5425	5428	5430	5432

## CONCERT SERIES SATIN COPPER

	22½"	25"	28"	30"	32"
Height	32" / 81cm	32" / 81cm	32" / 81cm	32" / 81cm	32" / 81cm
Overall Diameter	28" / 71cm	31" / 79cm	34" / 87cm	36" / 92cm	38" / 97cm
Weight	62lb / 28kg	66lb / 30kg	79lb / 36kg	82lb / 37kg	86lb / 39kg
Tuning Range	C3 - A3	A2 - F#3	F2 - D3	D2 - B2	C2 - A2
Struts	6	6	6	8	8
Renaissance Timpani Heads	8E35597	8E35660	8E35736	8E35787	8E35838
Opaque Timpani Heads	8E31597	8E31660	8E31736	8E31787	8E31838
Covers	1211	1211	1212	1212	1213
Code	5422S	5425S	5428S	5430S	5432S

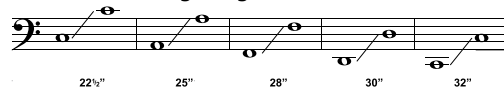
## CONCERT SERIES ALUMINIUM

	22½"	25"	28"	30"	32"
Height	32" / 81cm	32" / 81cm	32" / 81cm	32" / 81cm	32" / 81cm
Overall Diameter	28" / 71cm	31" / 79cm	34" / 87cm	36" / 92cm	38" / 97cm
Weight	62lb / 28kg	66lb / 30kg	79lb / 36kg	82lb / 37kg	86lb / 39kg
Tuning Range	C3 - A3	A2 - F#3	F2 - D3	D2 - B2	C2 - A2
Struts	6	6	6	8	8
Renaissance Timpani Heads	8E35597	8E35660	8E35736	8E35787	8E35838
Opaque Timpani Heads	8E31597	8E31660	8E31736	8E31787	8E31838
Covers	1211	1211	1212	1212	1213
Code	5352	5355	5358	5360	5362

## CONCERT SERIES FIBREGLASS

	22½"	25"	28"	30"	32"
Height	32" / 81cm	32" / 81cm	32" / 81cm	32" / 81cm	32" / 81cm
Overall Diameter	28" / 71cm	31" / 79cm	34" / 87cm	36" / 92cm	38" / 97cm
Weight	57lb / 26kg	60lb / 27kg	62lb / 28kg	77lb / 35kg	82lb / 37kg
Tuning Range	C3 - A3	A2 - F#3	F2 - D3	D2 - B2	C2 - A2
Struts	6	6	6	8	8
Renaissance Timpani Heads	8E35597	8E35660	8E35736	8E35787	8E35838
Opaque Timpani Heads	8E31597	8E31660	8E31736	8E31787	8E31838
Covers	1211	1211	1212	1212	1213
Code	5322-2	5325-2	5328-2	5330-2	5332-2

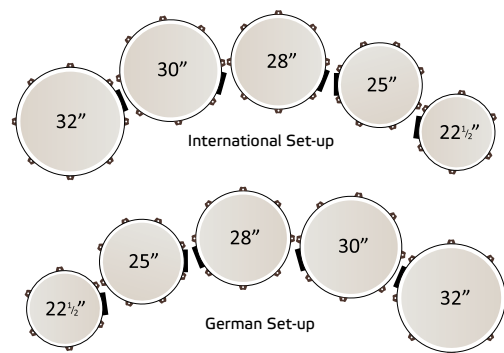
## Elite Series Tuning Range



## Pro-Symphonic Series Tuning Range



## Concert Series Tuning Range



International or German set-up available. When ordering German gauge position, add OPP to the code; For example 5922OPP.

Tuning ranges are nominal and depend on how well the instrument is set up, the age of the heads, the type of head, manufacturing tolerances and atmospheric conditions. If you are having flight cases made for the instruments, remember to allow for the protruding pedal and gauge.

## ACADEMY SERIES

	22½"	25"	28"	30"
Tuning Range	C3 - A3	A2 - F3	F2 - D3	D2 - B2
Code	5222-2	5225-2	5228-2	5230-2



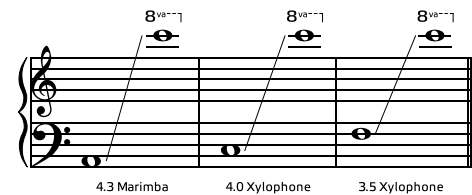
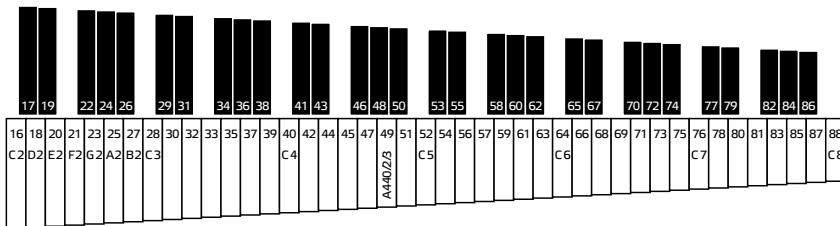
# SPECIFICATIONS

MARIMBAS | XYLOPHONES | GLOCKENSPIEL | CHIMES



	5.0 OCTAVE MARIMBA	4.0 OCTAVE XYLOPHONE	4.3 OCTAVE MARIMBA	3.5 OCTAVE XYLOPHONE	3.5 OCTAVE XYLOPHONE (CASED)	2.5 OCTAVE GLOCKENSPIEL
Frame Length	2540mm	1640mm	1770mm	1350mm	-	-
Frame Width (Low End)	1050mm	850mm	800mm	560mm	-	-
Frame Width (High End)	520mm	330mm	350mm	320mm	-	-
Note Range	C2 - C7	C4 - C8	A2 - C7	F4 - C8	F4 - C8	G5 - C8
Note Width ( <i>Graduated</i> )	<b>68 - 38mm</b>	<b>54 - 38mm</b>	<b>54 - 38mm</b>	38mm	38mm	32mm
Note Thickness ( <i>Graduated</i> )	<b>25 - 22mm</b>	<b>25 - 22mm</b>	<b>25 - 22mm</b>	20mm	20mm	10mm
Height Adjustment	895 - 985mm	800 - 920mm	800 - 920mm	790 - 845mm	-	-
Case Length	-	-	-	-	1290mm	vz
Case Width - Low End	-	-	-	-	630mm	523mm
Case Width - High End	-	-	-	-	275mm	280mm
Case Height	-	-	-	-	122mm	112mm
Weight (Cased Only)	-	-	-	-	10kg	-
Pitch A=442	YES	YES	YES	YES	YES	YES
Pitch A=440	YES	YES	-	-	-	-
Pitch A=443	YES	YES	-	-	-	-
Cases ( <i>covers</i> )	02CASE/5	<b>0724</b>	<b>0724</b>	<b>0725</b>	-	-
Code	<b>02RM500 *</b>	<b>02RX400 *</b>	<b>02RLM430</b>	<b>02PX350</b>	<b>02PX350C</b>	<b>02AG250</b>

\* When ordering these instruments, please specify your desired tuning from A440 (A0), A442 (A2) or A443 (A3); For example 02RM500/A2.



	STANDARD RANGE CHROME CHIMES	STANDARD RANGE BRASS CHIMES	EXTENDED RANGE CHROME CHIMES	EXTENDED RANGE BRASS CHIMES
Note Range	C5 - F6	C5 - F6	A#4 - G6	A#4 - G6
Pitch = A442	YES	YES	YES	YES
Pitch = A440	YES	YES	YES	YES
Pitch = A443	YES	YES	YES	YES
Frame Length	1890mm	1890mm	1890mm	1890mm
Frame Width	965mm	965mm	1160mm	1160mm
Frame Depth	680mm	680mm	680mm	680mm
Code	<b>0885BK</b>	<b>0885BBK</b>	<b>0895BK</b>	<b>0895BBK</b>

\* When ordering these instruments, please specify your desired tuning from A440 (A0), A442 (A2) or A443 (A3); For example 0885BK/A2.

	2.5 OCTAVE ALUMINIUM ALLOY GLOCKENSPIEL
Note Width	32mm
Note Thickness	10mm
Note Range	G5 - C8
Pitch = A442	YES
Case Length	825mm
Case Width (Low End)	523mm
Case Width (High End)	280mm
Case Height	112mm
Weight	10kg
Code	<b>02AG250</b>

# SPECIFICATIONS

ORCHESTRAL BASS DRUMS | CONCERT TOMS | ORCHESTRAL SNARE DRUMS

	ORCHESTRAL BASS DRUM	TURNBUCKLE ORCHESTRAL BASS DRUM
Size	36" x 16"	36" x 16"
Code	<b>0166</b>	<b>0176</b>

	ORCHESTRAL SNARE DRUMS		
Size	14" x 4"	14" x 5.5"	14" x 7"
Code	<b>2631DW</b>	<b>2633DW</b>	<b>2636DW</b>

	CONCERT TOMS							
Size	6" x 7"	8" x 8"	10" x 9"	12" x 10"	13" x 11"	14" x 12"	15" x 13"	16" x 14"
Code	<b>6706DW</b>	<b>6708DW</b>	<b>6710DW</b>	<b>6712DW</b>	<b>6713DW</b>	<b>6714DW</b>	<b>6715DW</b>	<b>6716DW</b>



PREMIER-PERCUSSION.COM



© 2012 Premier Music International Limited

Premier is dedicated to creating percussion instruments of only the highest possible quality. Because we are constantly improving, updating and introducing new products, and because we also may be subject to material changes outside of our control, we reserve the right to change product specifications as necessary without prior notification.