

SLINGERLAND
BANJO & DRUM CO.

The
PINNACLE
of
PERFECTION
in DRUMS

A Triumph in Drum Craftsmanship

THE success of the SLINGERLAND Banjo and Drum Company is a direct result of offering the musical public instruments carrying full value.

This new pocket catalog carries the amazing message of economy; there is absolutely no excuse for any drummer to be handicapped; SLINGERLAND Drums are designed and constructed to offer service and satisfaction, and that purpose has been accomplished.

The test was made under conditions which might have impaired the mechanical efficiency of any drum, yet it proved satisfactory to the technicians and professional drummers.

The musician of today considers highly the appearance of his instruments, but he cannot sacrifice tone quality for beauty alone, so, with this in mind, the SLINGERLAND Banjo and Drum Company have perfected the ultimate in both beauty and quality construction.

GUARANTEE

We guarantee SLINGERLAND Drums to be made of selected woods and the highest grade materials obtainable; manufactured and assembled by skilled workmen.

The Bostonian Cruising University, making a Co-educational Tour around the world, will have on board a forty-piece collegiate band with a drum section entirely equipped with SLINGERLAND Drums.

Playing and Endorsing Slingerland Drums

After eighteen years of constant playing on different percussion instruments sold by various makers, I find that the SLINGERLAND Drums surpass all others in vibratory qualities.

Adrian L. Goslee,
Drummer Saenger Theatre,
New Orleans, La.

The Saenger Theatre is classed as one of the four most beautiful theatres in the world and one of the largest in the U. S. A.

Within a short period of time, SLINGERLAND Drums will be heard in every large seaport and in many inland cities of the entire globe.



THIS illustration will give you an idea of one of the SLINGERLAND up-to-date factories, with the latest modern equipment for the manufacturing of

Drums for the Professional



Corner Belden Ave. and Ward St.
CHICAGO, ILL. U. S. A.

BASS AND SNARE DRUMS

Marine
Pearl
Finish
Artist
Model



THE SLINGERLAND Marine Pearl Drums furnish the beauty and flash which will appeal to all progressive drummers. These drums are positively guaranteed not to warp or check.

The Bass Drum is of laminated shell, covered with Marine Pearl. The counterhoops have a 3/4" strip of Marine Pearl and gold colored edgings.

SEPARATE TENSION—TYMPANI RODS

- No. 300—14x26, metal parts artgold finish.....\$92.50
- No. 301—14x28, metal parts artgold finish..... 92.50
- No. 302—14x26, metal parts nickel plated..... 80.00
- No. 303—14x28, metal parts nickel plated..... 80.00

CENTER SUPPORT—TYMPANI RODS

- No. 413—14x26, metal parts artgold finish.....\$80.00
- No. 414—14x28, metal parts artgold finish..... 80.00
- No. 415—14x26, metal parts nickel plated..... 70.00
- No. 416—14x28, metal parts nickel plated..... 70.00

Painted scenes extra, see page 15.

THIS beautiful Snare Drum is the ideal partner for the Marine Pearl Bass Drum. A classy glistening pearl. On regular SLINGERLAND Solid Wood Shell Model, Separate Tension. Equipped with the new Patented Tone Flange, which positively eliminates any ring in the drum. Choice of snares.

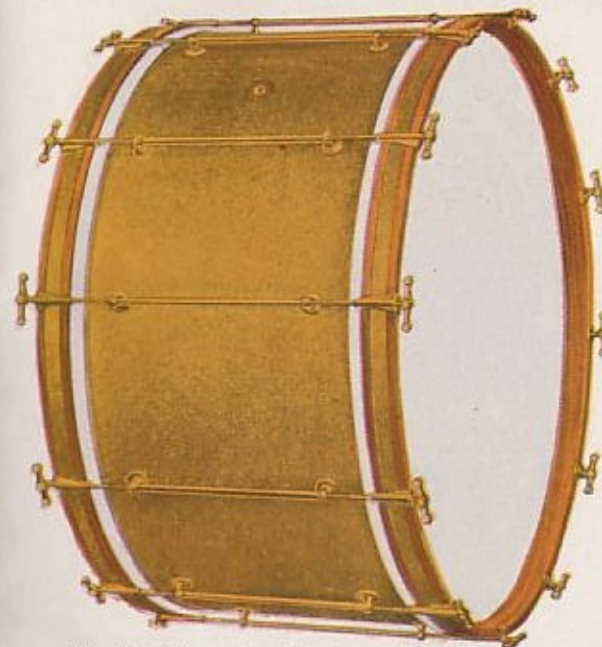


- No. 100—All metal parts artgold finish, 14x4\$65.00
- No. 101—All metal parts artgold finish, 14x5 65.00
- No. 102—All metal parts artgold finish, 14x6 1/2 65.00
- No. 103—All metal parts nickel plated, 14x4 50.00
- No. 104—All metal parts nickel plated, 14x5 50.00
- No. 105—All metal parts nickel plated, 14x6 1/2 50.00

Drums for the professional

BASS AND SNARE DRUMS

Brilliant
Gold
Finish
Artist
Model



THE brilliant gold finished drums have the shells covered with the same grade of material as the Marine Pearl, only in brilliant gold, which is very attractive and practical, as it is guaranteed not to warp or crack.

The Bass Drum is of laminated shell, covered with Brilliant Gold Pearl. The counterhoops have a 3/4" strip of Brilliant Gold, edged with walnut colored strips. All rods are tympani model.

SEPARATE TENSION

- No. 304—Metal parts artgold finish, 14x26.....\$92.50
- No. 305—Metal parts artgold finish, 14x28..... 92.50
- No. 306—Metal parts nickel plated, 14x26..... 80.00
- No. 307—Metal parts nickel plated, 14x28..... 80.00

CENTER SUPPORT

- No. 417—Metal parts artgold finish, 14x26.....\$80.00
- No. 418—Metal parts artgold finish, 14x28..... 80.00
- No. 419—Metal parts nickel plated, 14x26..... 70.00
- No. 420—Metal parts nickel plated, 14x28..... 70.00

Painted scenes extra, see page 15.



THIS brilliant gold snare drum as well as the other professional models are equipped with the semi-floating head, eliminating any headbinding as the flesh hoop cannot touch the shell; also has the Patented Tone Flange. Choice of snares.

- No. 106—14x4 All metal parts artgold finish.....\$65.00
- No. 107—14x5 All metal parts artgold finish..... 65.00
- No. 108—14x6 1/2 All metal parts artgold finish..... 65.00
- No. 109—14x4 All metal parts nickel plated..... 50.00
- No. 110—14x5 All metal parts nickel plated..... 50.00
- No. 111—14x6 1/2 All metal parts nickel plated..... 50.00

Drums for the professional

BASS AND SNARE DRUMS

Tutone
Finish
Artist
Model

THE Tutone finish is a very attractive and classy combination. Artgold on all metal parts on highly polished Walnut shells. These drums will hold a conspicuous place in any surroundings.



Tutone Finish Bass Drums are furnished in either separate or single tension, with tympani model rods. Artgold finish.

No. 327—14x26 Separate Tension	\$55.00
No. 329—14x28 Separate Tension	60.00
No. 350—14x26 Single Tension	41.00
No. 352—14x28 Single Tension	44.00

Painted scenes extra, see page 15

THE Snare Drum is the Semi-Floating head model with the SLINGERLAND Solid Walnut Shell. The snappiest drum on the market, as well as attractive in appearance. Equipped with patented tone flange. The Tutone Artist Models are also supplied in mahogany, white enamel, or black ebonized shells. Artgold on all metal parts. Choice of snares.



No. 112—4x14	\$45.00
No. 113—5x14	45.00
No. 114—6 1/2 x 14	45.00

Furnished with laminated shells if desired.

Drums for the professional

BASS AND SNARE DRUMS

Black
Diamond
Finish
Artist
Model



THE shells of these drums are covered with Black Diamond Pearl, which is smooth in surface, stately and illustrious in appearance, contrasting beautifully with the nickel or artgold drum trimmings. These drums are in a class of their own.

The Bass Drum is of laminated shell, covered with Black Diamond Pearl. The counterhoops have a 3/4" strip of Black Diamond Pearl, edged with gold colored strips. All rods are tympani model.

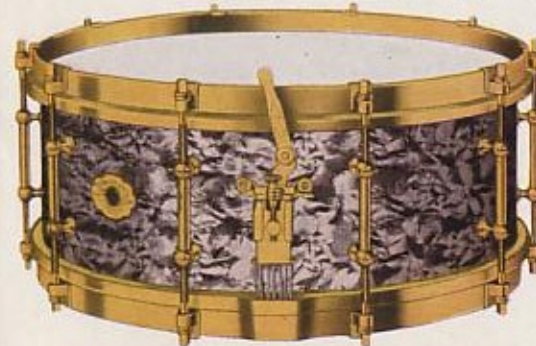
SEPARATE TENSION

No. 308—Nickel plated, 14x26	\$80.00
No. 309—Nickel plated, 14x28	80.00
No. 310—Artgold finish, 14x26	92.50
No. 311—Artgold finish, 14x28	92.50

CENTER SUPPORT

No. 421—Nickel plated, 14x26	\$70.00
No. 422—Nickel plated, 14x28	70.00
No. 423—Artgold finish, 14x26	80.00
No. 424—Artgold finish, 14x28	80.00

Painted scenes extra, see page 15



THE Snare Drum is of solid wood shell covered with Black Diamond Pearl. Separate Tension; equipped with the new Patented Tone Flange, eliminating any ring in the drum. Choice of snares.

No. 115—All metal parts nickel plated, 14x4	\$50.00
No. 116—All metal parts nickel plated, 14x5	50.00
No. 117—All metal parts nickel plated, 14x6 1/2	50.00
No. 118—All metal parts artgold finish, 14x4	65.00
No. 119—All metal parts artgold finish, 14x5	65.00
No. 120—All metal parts artgold finish, 14x6 1/2	65.00

Drums for the professional

BASS AND SNARE DRUMS

Sea
Green
Pearl
Finish
Artist
Model



COMING to the various selections desired by drummers, we are showing cuts of the SEA GREEN PEARL DRUMS with Nickel Plated Trimmings. However, they are also supplied with Artgold (imitation gold) trimmings which make a beautiful combination. Refined and classy looking drums.

The Bass Drum is of laminated shell, covered with Sea Green Pearl. The counterhoops have a 3/4" strip inlay of Sea Green Pearl with gold colored edgings. Rods are Tympani Model.

SEPARATE TENSION

- No. 312—14x26, metal parts nickel plated...\$80.00
- No. 313—14x28, metal parts nickel plated.... 80.00
- No. 411—14x26, metal parts artgold finish.... 92.50
- No. 412—14x28, metal parts artgold finish.... 92.50

CENTER SUPPORT

- No. 425—14x26, metal parts nickel plated...\$70.00
- No. 426—14x28, metal parts, nickel plated.... 70.00
- No. 427—14x26, metal parts artgold finish.... 80.00
- No. 428—14x28, metal parts artgold finish.... 80.00

Painted scenes extra, see page 15

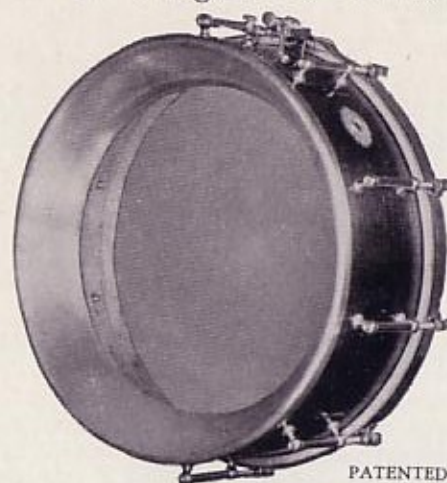


THE Snare Drum is of solid wood shell, covered with Sea Green Pearl. Separate Tension and equipped with the new Patented Tone Flange, eliminating any ring in the drum. Choice of Snares.

- No. 121—All metal parts nickel plated, 14x4\$50.00
- No. 122—All metal parts nickel plated, 14x5 50.00
- No. 123—All metal parts nickel plated, 14x6 1/2 50.00
- No. 162—All metal parts artgold finish, 14x4 65.00
- No. 163—All metal parts artgold finish, 14x5 65.00
- No. 164—All metal parts artgold finish, 14x6 1/2 65.00

Drums for the professional

Introducing the New Slingerland Patented Tone Flange



PATENTED

THRU scientific experimentation to develop the percussion instrument, which has been at a standstill for many years, the SLINGERLAND Banjo and Drum Company introduces the SLINGERLAND Patented Tone Flange Drum with its many advantageous features.

This Tone Flange eliminates the ring and overtone which drummers have worried about for years. It rejuvenates and clarifies the tone and staccato notes "pop" out like the crack of a machine gun. It also enables the drummer to make a clean "cut-off" without any overtones regardless of where his sticks may be; at the center or extreme edge of head.

Tone Quality cannot be pictured. Hear one. Play one.

Without a doubt the offer listed below will go a long way in proving our unbounded faith and confidence in the new SLINGERLAND Patented Tone Flange.

To All Legitimate Music Dealers
We Make This Offer

We will ship on 10-day consignment any style Snare Drum equipped with the Patented Tone Flange, so the dealers may have the professional drummer test it. If the performance of the drum does not exceed the best he has ever played we will pay transportation charges both ways.

Playing and Endorsing Slingerland Drums

Mr. Horace Beaver, well-known drummer with Zez Confrey's Victor Recording Orchestra, recently purchased a SLINGERLAND brilliant gold pearl drum outfit of the Music Shop at Kalamazoo, Michigan. Mr. Beaver has played on the Keith and Orpheum circuits, and played a ten weeks' engagement during the opening of the New Kenmore Hotel, Albany, N. Y.

Drums for the professional

**ARTIST
MODEL
DRUMS**

*Black
Beauty
Finish*



OUR "Black Beauty" finished shell, with Artgold Trimmings, is a very attractive combination and a big favorite with the drummers. This all-metal, separate tension drum is unyielding to rough usage, due to specially treated metal. All one piece shell and absolutely no solder used at any point. Artgold finish is a special electro-plating process that has the true color of gold and a much harder deposit than genuine gold, and will wear much longer. The shell is beautifully hand engraved.

Art Gold Trimmings		Nickel Plated Trimmings	
No. 124.....4	x14	No. 165.....4	x14
No. 125.....5	x14	No. 166.....5	x14
No. 126.....6 1/2	x14	No. 167.....6 1/2	x14
} \$42.50		} \$37.50	
All Sizes		All Sizes	

**ARTIST
MODEL
DRUMS**

*Wood Shell—
Separate
Tension*



THIS is the Standard Model Solid Wood Shell with heavily nickel-plated metal parts. Equipped with ten (10) separate tension rods. Has heavy top band which covers the flesh hoops, adding strength to the drum as well as appearance.

May be secured in Walnut, Mahogany, White Enamel or Black Ebonized Shells—all models equipped with SLINGERLAND Patented Tone Flange.

No. 127.....4	x14	} \$35.00
No. 128.....5	x14	
No. 129.....6 1/2	x14	
} All Sizes		

When ordering specify finish desired

Also supplied in Artgold plated (imitation gold) trimmings in Walnut, Mahogany, White Enamel, or Black Ebonized Wood Shells.

No. 112.....4	x14	} \$45.00
No. 113.....5	x14	
No. 114.....6 1/2	x14	
} All Sizes		

Drums for the professional

ARTIST MODEL DRUMS

All Metal—Separate Tension



THE SLINGERLAND All-Metal Separate Tension Snare Drum is guaranteed to maintain its rigidity and its tenseness. It is unyielding to rough usage, due to the specially treated metal and its construction. One-piece shell and no solder used at any point.

Guaranteed not to warp. A heavy metal counterhoop which extends over the flesh hoop strengthens the drum as well as adding to its beauty. Equipped with semi-floating heads, eliminating any headbinding as the flesh hoop cannot touch the shell, enabling the drummer to get uniform tension with ease.

No. 130.....4	x14	} \$32.50
No. 131.....5	x14	
No. 132.....6 1/2	x14	
} All Sizes		



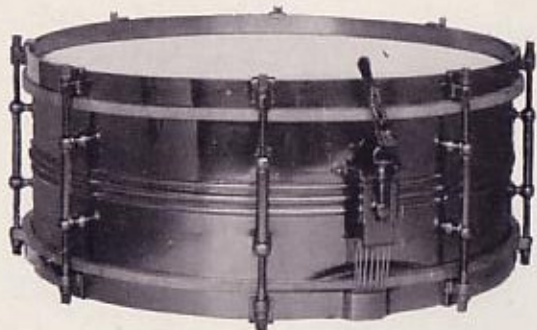
THIS drum is of the same construction as the one listed above, with all metal parts heavily plated with genuine gold, hand engraved and burnished.

No. 133.....4	x14	} \$130.00
No. 134.....5	x14	
No. 135.....6 1/2	x14	
} All Sizes		

Drums for the professional

PROFESSIONAL MODEL DRUMS

All Metal—Separate Tension



THIS is an ideal drum for one who desires a professional style at a medium price. This is the only moderately priced drum on the market equipped with a professional Snare Throw-off. Eight (8) separate tension rods. All metal parts are heavily nickel plated, guaranteed not to rust. Supplied only with silk wire-wound snares.

No. 136.....	4	x14	} \$25.00 All Sizes
No. 137.....	5	x14	
No. 138.....	6 1/2	x14	

PROFESSIONAL MODEL DRUMS

Wood Shell—Separate Tension



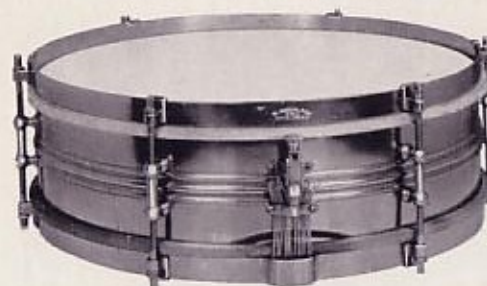
THE above cut shows the Professional Model in solid wood shell (finished in brown mahogany or walnut), also equipped with a professional Snare Throw-off. A fine drum for those desiring a medium priced wood shell. Eight (8) separate tension rods. All metal parts are heavily nickel plated; rust proof.

No. 139.....	4	x14	} \$22.50 All Sizes
No. 140.....	5	x14	
No. 141.....	6 1/2	x14	

Drums for the professional

UNIVERSAL MODEL SNARE DRUMS

All Metal—Separate Tension



THE ideal drum for the small orchestra, solid metal shell, with six (6) professional separate tension rods and Junior Snare Throw-off. Heavily nickel plated, silk wire-wound snares and best quality heads.

No. 142.....	4x14	} \$20.00
No. 143.....	5x14	

Wood Shell—Separate Tension



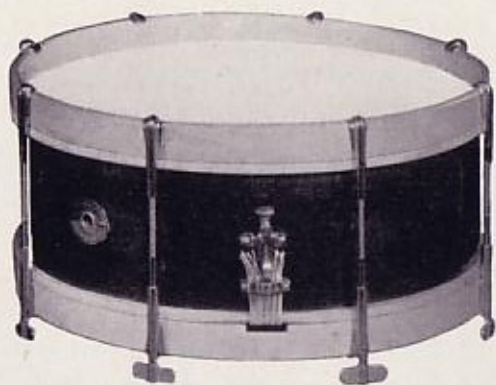
THIS drum is also an ideal instrument for the small orchestra or school. Solid Wood Shell in genuine Brown Mahogany only. Equipped with six (6) professional separate tension rods, and Junior Snare Throw-off. Metal parts are heavily nickel plated. Silk wire-wound snares and best quality heads.

No. 144.....	4x14	} \$17.50
No. 145.....	5x14	

Drums for the professional

JUVENILE SNARE DRUMS

The Snappy Partner



A VERY durable and snappy drum, which will stand up under hard usage. Ideal for the amateur desiring a good drum at a moderate price. Laminated Shell, Brown Mahogany Finish, eight (8) Thumbscrew Rods. Natural Maple Counterhoops; Good Quality Heads. Junior Snare Throw-off.

No. 146—3x14.....	\$12.50
No. 147—4x14.....	14.00
No. 148—5x14.....	14.00

TANGO MODEL SNARE DRUM



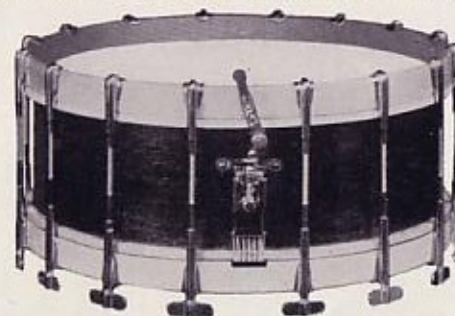
SAME finish and construction as above model, but furnished with six (6) thumbscrew rods.

One Size Only

No. 149—3x13.....	\$10.50
-------------------	---------

Drums for the professional

THUMB ROD SNARE DRUMS



THE SLINGERLAND Thumb Rod Drum is made of the finest materials obtainable. Furnished in either Walnut or Brown Mahogany Solid Wood Shells; Hard Maple Counterhoops; sixteen (16) Thumbscrew Rods. SLINGERLAND best grade White Calf Batter Head; 100% Transparent Snare Head. Equipped with the most reliable and substantial Snare Strainer on the market.

Sixteen Rod Model		Ten Rod Model	
No. 150.....3x14	} \$24.00 All Sizes	No. 156.....3x14	} \$22.00 All Sizes
No. 151.....3x15		No. 157.....3x15	
No. 152.....4x14		No. 158.....4x14	
No. 153.....4x15		No. 159.....4x15	
No. 154.....5x14		No. 160.....5x14	
No. 155.....5x15		No. 161.....5x15	

SPEEDY SURE-HOLD SNARE STRAINER

Worked with Drum Stick



THIS Snare Strainer is used on all Artist and Professional Model Snare Drums. If Tom-Tom effect is desired, throw off with the drum stick. The most reliable and substantial Snare Strainer on the market.

No. 967—Complete with snare jaws.....	\$4.00
---------------------------------------	--------

Drums for the professional

ARTIST MODEL BASS DRUM AND
BLINKER LIGHTS



THE majority of drummers today desire an artistically finished set of drums which will have a tendency to create a more desirable demand for their services. The ornamental finishes are supplied only in Artist Model Drums, listed on pages 2, 3, 4, 5, 6, 16 and 17. Hand-Painted Scenes and Blinker Lights at a small additional charge. Prices below on Blinker Lights, and Scenes on opposite page.

Interior Lights for Bass Drums

Colored lights in an Artist Model Ornamental Finish Bass Drum adds the finishing touch to your outfit. They are used by practically all the leading drummers.

No. 820—SLINGERLAND Blinker Lights in various colors, two sockets. We install two colored lights that blend harmoniously with the scene selected. Equipped with extension cord, \$10.00.
Two sockets for 110 volt circuit.

The SLINGERLAND Drums with advanced features are the instruments I honestly recommend as the best the drummer can use.

Fred G. Tessin,
Boston, Mass.

Drums for the professional

SLINGERLAND GENUINE OIL PAINTINGS

THESE scenes are hand painted by an expert in this line; reproduced in very pleasing colors with the exception of Diving Girl Scene No. 823, which is a silhouette in black and white artistically shaded. They will last indefinitely and are water-proof. You can wash them without fear of blurring or rubbing. To make a long story short, they are beautiful enough to be framed.



No. 821—Mountain scene
Price, \$12.00



No. 822—Scotland scene
Price, \$12.00



No. 823—Diving Girl scene
Black and White Silhouette
Price, \$10.00



No. 824—Summit Castle scene
Price, \$12.00



No. 825—Lily Lake scene
Price, \$12.00

Drums for the professional

Artist
Model
Separate
Tension
Bass Drums



THE finest of selected woods are seasoned and treated for the SLINGERLAND Laminated and Solid Shell Bass Drums. Choice of construction allows the drummer to select a solid wood shell if he so desires. The solid shells are supplied in two sizes (only) as listed below and on page 17. Selected White Peak Calf Heads.

Artist Model—separate tension, tympani rods, all metal parts nickel plated. Supplied in Walnut, Black Ebonized, Brown Mahogany and White Enamel Shells. Walnut shells up to 30" only. Hard Maple Hoops stained to match any of above finishes.

LAMINATED SHELLS

Nickel Plated Rods

No. 314—12x26, 10 rods.....	\$41.50
No. 315—14x26, 10 rods.....	42.50
No. 316—12x28, 12 rods.....	46.50
No. 317—14x28, 12 rods.....	47.50
No. 318—14x30, 12 rods.....	51.00
No. 319—16x30, 12 rods.....	52.00
No. 320—14x32, 12 rods.....	55.00
No. 321—16x32, 12 rods.....	56.00
No. 322—16x34, 14 rods.....	63.00
No. 323—18x34, 14 rods.....	65.00

SOLID WOOD SHELLS

Nickel Plated Rods

No. 324—14x26, 10 rods.....	\$47.50
No. 325—14x28, 12 rods.....	52.50

SOLID WOOD SHELLS

Furnished in Brown Mahogany, Black Ebonized, White Enamel and Maple Shells only.

Drums for the professional

LAMINATED SHELLS

Artgold (Imitation Gold) Rods

No. 326—12x26, 10 rods.....	\$54.00
No. 327—14x26, 10 rods.....	55.00
No. 328—12x28, 12 rods.....	59.00
No. 329—14x28, 12 rods.....	60.00
No. 330—14x30, 12 rods.....	63.50
No. 331—16x30, 12 rods.....	64.50
No. 332—14x32, 12 rods.....	67.50
No. 333—16x32, 12 rods.....	68.50
No. 334—16x34, 14 rods.....	75.50
No. 335—18x34, 14 rods.....	77.50

SOLID WOOD SHELLS

Artgold (Imitation Gold) Rods

No. 336—14x26, 10 rods.....	\$60.00
No. 337—14x28, 12 rods.....	65.00



Artist
Model
Single
Tension
Bass Drums

THESE drums are of the same construction as those listed on page 16, only single tension rods instead of separate tension. Selected White Peak SLINGERLAND Calf Heads. Supplied in Walnut Shells up to 30" only.

Artist Model, center support, tympani rods. Supplied in Walnut, Genuine Brown Mahogany, Black Enamel, White Enamel and Maple Shells. Hard Maple Hoops, stained to match any of above finishes.

LAMINATED SHELLS

Nickel Plated Rods

No. 338—12x26, 10 rods.....	\$30.00
No. 339—14x26, 10 rods.....	31.00
No. 340—12x28, 12 rods.....	33.00
No. 341—14x28, 12 rods.....	34.00
No. 342—14x30, 12 rods.....	37.00
No. 343—16x30, 12 rods.....	38.00
No. 344—14x32, 12 rods.....	41.00
No. 345—16x32, 12 rods.....	42.00
No. 346—16x34, 14 rods.....	46.00

SOLID WOOD SHELLS

No. 347—14x26, 10 rods.....	\$37.00
No. 348—14x28, 12 rods.....	40.00

Solid Wood Shells furnished in Brown Mahogany, Black Ebonized, White Enamel and Maple Shells only.

LAMINATED SHELLS

Double Stud, Nickel Plated Rods

No. 360—12x26, 10 rods.....	\$31.00
No. 361—14x26, 10 rods.....	32.00
No. 362—12x28, 12 rods.....	34.50
No. 363—14x28, 12 rods.....	35.50
No. 364—14x30, 12 rods.....	38.50
No. 365—16x30, 12 rods.....	39.50
No. 366—14x32, 12 rods.....	42.50
No. 367—16x32, 12 rods.....	43.50
No. 368—16x34, 14 rods.....	48.00

SOLID WOOD SHELLS

No. 369—14x26, 10 rods.....	\$38.00
No. 370—14x28, 12 rods.....	41.50

Solid Wood Shells furnished in Brown Mahogany, Black Ebonized, White Enamel and Maple Shells only.

Drums for the professional

LAMINATED SHELLS

Artgold (Imitation Gold) Rods

No. 349—12x26, 10 rods.....	\$40.00
No. 350—14x26, 10 rods.....	41.00
No. 351—12x28, 12 rods.....	43.00
No. 352—14x28, 12 rods.....	44.00
No. 353—14x30, 12 rods.....	47.00
No. 354—16x30, 12 rods.....	48.00
No. 355—14x32, 12 rods.....	51.00
No. 356—16x32, 12 rods.....	52.00
No. 357—16x34, 14 rods.....	56.00

SOLID WOOD SHELLS

No. 358—14x26, 10 rods.....	\$47.00
No. 359—14x28, 12 rods.....	50.00

LAMINATED SHELLS

Double Stud Artgold (Imitation Gold) Rods

No. 371—12x26, 10 rods.....	\$41.00
No. 372—14x26, 10 rods.....	42.00
No. 373—12x28, 12 rods.....	44.50
No. 374—14x28, 12 rods.....	45.50
No. 375—14x30, 12 rods.....	48.50
No. 376—16x30, 12 rods.....	49.50
No. 377—14x32, 12 rods.....	52.50
No. 378—16x32, 12 rods.....	53.50
No. 379—16x34, 14 rods.....	58.00

SOLID WOOD SHELLS

Artgold

No. 380—14x26, 10 rods.....	\$48.00
No. 381—14x28, 12 rods.....	51.50

PROFESSIONAL AND UNIVERSAL MODEL
BASS DRUMS

A VERY popular model for professional work. Separate Tension with Tympani Rods. An appropriate drum for general use. Supplied in Brown Mahogany or Maple Shells only, and with Hard Maple Hoops. Selected calf skin heads.



LAMINATED SHELLS

No. 382—12x24, 8 rods.....	\$32.50
No. 383—14x24, 8 rods.....	33.50
No. 384—12x26, 10 rods.....	34.50
No. 385—14x26, 10 rods.....	35.50
No. 386—12x28, 12 rods.....	37.50
No. 387—14x28, 12 rods.....	38.50
No. 388—16x28, 12 rods.....	39.50
No. 389—12x30, 12 rods.....	40.50
No. 390—14x30, 12 rods.....	41.50
No. 391—16x30, 12 rods.....	42.50

SINGLE Tension Center Support Professional Model Tympani Rods. Supplied in Genuine Brown Mahogany or Maple Shells only. Hard Maple Hoops. Selected calf skin heads.



No. 429— 8x24, 8 rods.....	\$22.50
No. 430—10x24, 8 rods.....	23.50
No. 392—12x24, 8 rods.....	24.50
No. 393—14x24, 8 rods.....	25.50
No. 394—12x26, 10 rods.....	26.50
No. 395—14x26, 10 rods.....	27.50
No. 396—12x28, 12 rods.....	29.50
No. 397—14x28, 12 rods.....	30.50
No. 398—14x30, 12 rods.....	33.50
No. 399—16x30, 12 rods.....	34.50

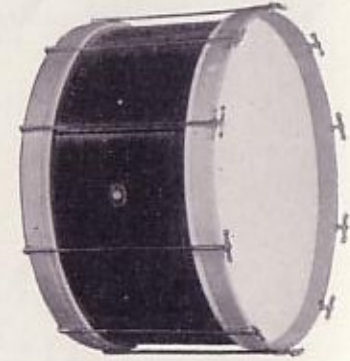
LAMINATED MAPLE OR MAHOGANY SHELLS

Center Support Tympani Rods. Good Grade of Heads

No. 431— 8x24, 8 rods.....	\$19.00
No. 432—10x24, 8 rods.....	20.00
No. 400—12x24, 8 rods.....	21.00
No. 401—12x26, 10 rods.....	23.00
No. 402—14x26, 10 rods.....	24.00
No. 403—12x28, 12 rods.....	26.00
No. 404—14x28, 12 rods.....	27.00
No. 405—16x28, 12 rods.....	28.00

UNIVERSAL BASS DRUMS

BROWN Mahogany Shell and Hard Maple Hoops. The ideal Bass Drum for the amateur. Tympani Model Rods. No Center Support. Finest grade of Calf heads.



No. 433— 8x24, 8 rods.....	\$22.00
No. 406—10x24, 8 rods.....	23.00
No. 407—12x24, 8 rods.....	24.00
No. 408—10x26, 10 rods.....	25.00
No. 409—12x26, 10 rods.....	26.00

Drums for the professional

PROFESSIONAL MODEL SEPARATE TENSION
STREET DRUMS



SLINGERLAND "Fancher Model" Street Drum, equipped with the Patented Tone Flange, the snappiest Street Drum built. Furnished in Walnut, Mahogany, Ebonized or White Enamel Shells. Eight (8) separate tension rods. Finest selected heads.

No. 600.....	12x16	} \$34.00 Either Size
No. 601.....	12x17	

Two sizes only.
Sticks and slings included.

SLINGERLAND Professional Model Street Drum, same style as No. 600, without the Tone Flange, furnished in Walnut, Mahogany, Ebonized or White Enamel Shells. Eight (8) separate tension rods. Finest selected heads.

No. 602.....	12x15	} \$27.00 All Sizes
No. 603.....	10x16	
No. 604.....	12x16	
No. 605.....	12x17	

Sticks and slings included.



FRANK S. FANCHER, World's Champion Rudimental Drummer, not only endorses the SLINGERLAND Drums but uses them exclusively. The drum has had no closer relative than Champ Fancher, who has participated in contests all over the world; winning over two hundred (200) first prizes.

He is claimed an authority and emphatically states, "The drummer using a SLINGERLAND Drum has the confidence that he is playing the best that can be built. Mr. Fancher will gladly give any information desired in forming or organizing drum corps; and will select and test your street drums. Write him in care of SLINGERLAND Banjo and Drum Company, Chicago.

SLINGERLAND Scout Model Street Drum has been accepted as the official Girl Scout Drum for the State of Massachusetts. This drum has made its mark with this organization in competition with many other well-known makes.

Drums for the professional

SLINGERLAND THUMB ROD STREET DRUMS

THIS drum will meet the requirements of the majority of rudimental players. Furnished in Walnut or Mahogany Shells, twelve (12) thumbscrew rods center support. Hard maple counterhoops. Finest selected heads.

No. 606.....	12x15	} \$27.50 All Sizes
No. 607.....	10x16	
No. 608.....	12x16	
No. 609.....	12x17	

Sticks and sling included. Rope tension instead of rods, at same price.



Fancher model Wood Counterhoop Street Drums equipped with the Patented Tone Flange. The snappiest street drum built. Same construction as above models. Finest selected heads.

No. 616.....	12x16	} \$34.50 Either Size
No. 617.....	12x17	

Two sizes only.



THE popular style for Drum Corps and Parade work. Light weight, but very substantial. Walnut or Mahogany Shells, ten (10) thumbscrew rods center support. Finest selected heads.

No. 610.....	12x15	} \$25.00 All Sizes
No. 611.....	10x16	
No. 612.....	12x16	

Sticks and sling included. Rope tension instead of rods, at same price.



CORPORAL model Field Drum supplied in Brown Mahogany Shell only, eight (8) center support thumbscrew rods. Selected heads.

No. 613—9x15.....	\$20.00
-------------------	---------

One size only. Sticks and sling included. Rope tension instead of rods, at same price.

Drums for the professional

SLINGERLAND THUMB ROD STREET DRUMS

BOY SCOUT MODEL

BOY SCOUT model Field Drum, built for all kinds of service; good and substantial, just the drum for Boy Scout and Parade work. Laminated shell, Maple or Brown Mahogany Finish. Eight (8) thumbscrew rods; good grade of Calf Skin heads; silk and wire snares.

No. 614—10x14.....	\$15.00
--------------------	---------

One size only. Sticks and sling included.



JUNIOR BOY SCOUT MODEL

THE Junior Boy Scout model, light and substantial. The ideal drum for the smaller Boy Scout. Easy to carry. A high grade, popular priced drum. Laminated shell, Maple or Brown Mahogany finish; Hard Maple Counterhoops; eight (8) nicked thumbscrew rods. Equipped with good strainer; silk and wire snares.

No. 615—8x13.....	\$12.00
-------------------	---------

One size only. Sticks and sling included.



BOY SCOUT BASS DRUM

THIS Bass Drum is designed to match the Scout, Field or Street Drums and of the same construction. Laminated Shell in Maple or Brown Mahogany finish. Hard Maple Counterhoops with eight (8) thumbscrew rods. Best grade of Calf Skin heads.

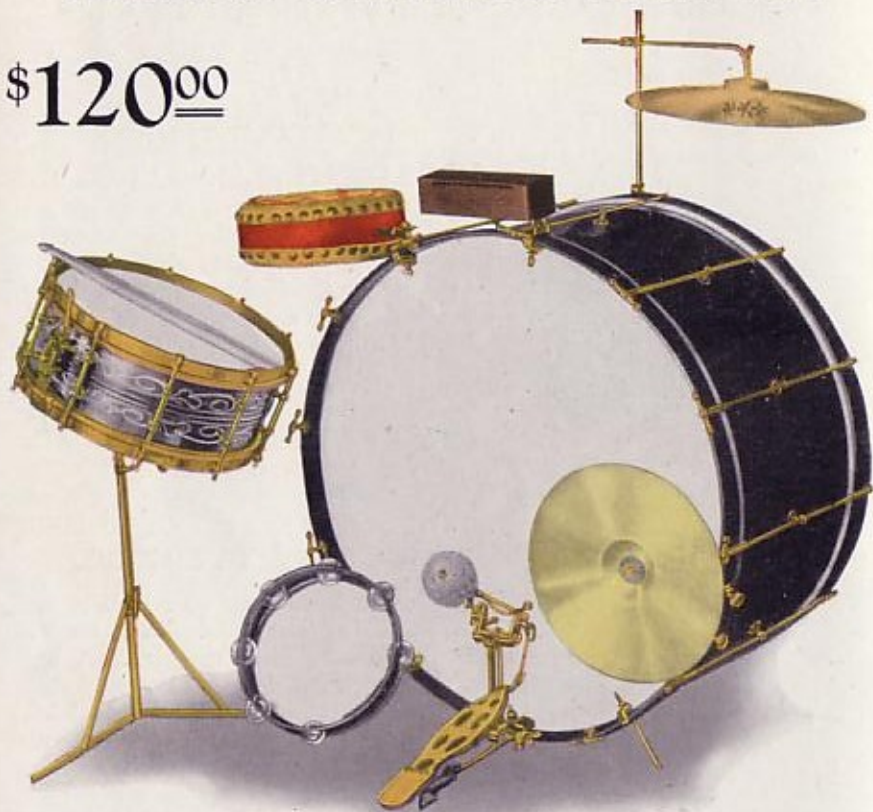
No. 410—12x24.....	\$22.00
--------------------	---------

One size only.



Drums for the professional

THE ARTIST BLACK BEAUTY OUTFIT No. 1

\$120⁰⁰

EVERY musician gets a great deal of satisfaction from playing on beautiful instruments, which are the striking features of any band. Be in the lime-light with a SLINGERLAND Black Beauty Outfit; practical and reasonable in price. This outfit equipped with Blinker Lights completely installed at an extra charge of \$10.00; also any hand-painted scene on Bass Drum listed on page 15 at a small additional charge.

Outfit consists of:

- 5 x 14 Black Beauty Semi-floating Head Snare Drum, Black Nickel, hand engraved and Artgold rods, all metal, separate tension.
- 14 x 28 Black Beauty Bass Drum in Black Ebonized finish, twelve (12) tympani model rods, Artgold finish.
- SLINGERLAND Pedal complete with Spurs and Cymbal Holder, Artgold.
- Twelve (12) inch Brass Cymbal.
- Hamilton Drum Stand, Artgold.
- Fourteen (14) inch Chinese Crash Cymbal.
- Nine (9) inch Chinese Tom Tom.
- SLINGERLAND Crash Cymbal Holder, Artgold.
- SLINGERLAND Tom Tom Holder, Artgold.
- Chinese Wood Block.
- SLINGERLAND Wood Block Holder.
- SLINGERLAND eight (8) inch Tambourine.
- Pair Blue Ribbon Hickory Drum Sticks.

Drums for the professional

THEATRICAL OUTFIT No. 2

\$95⁰⁰

THE Theatrical Outfit meets the requirements of the most discriminating drummers for all-around use. The finest selection of materials have been used in assembling the units in this outfit.

Consists of:

- 5 x 14 SLINGERLAND All-Metal Separate Tension Snare Drum.
- 14 x 28 Artist Model Bass Drum, twelve (12) Separate Tension Tympani rods; Mahogany Shell.
- SLINGERLAND Pedal complete with Spurs and Cymbal Holder.
- Twelve (12) inch Brass Cymbal.
- Pair Spanish Castanets.
- Hamilton Drum Stand.
- Fourteen (14) inch Chinese Crash Cymbal.
- Ten (10) inch SLINGERLAND Tambourine.
- Nine (9) inch Chinese Tom-Tom.
- Jazz Slapstick.
- Perfection Double Rattle.
- SLINGERLAND 8 inch Triangle.
- SLINGERLAND Crash Cymbal Holder.
- SLINGERLAND Tom-Tom Holder.
- Chinese Wood Block.
- SLINGERLAND Wood Block and Triangle Holder.
- Pair Blue Ribbon Hickory Drum Sticks.

Drums for the professional

MAJESTIC OUTFIT No. 3

\$75⁰⁰

THE Majestic Outfit is also composed of high grade materials of superb quality, adaptable for dance hall or theatrical use, regardless of the size of the hall or theatre. The equipment on this outfit is standard; however, any additional traps may be added at a small cost.

Consists of:

- 5 x 14 SLINGERLAND All-Metal Separate Tension Snare Drum.
- 14 x 26 Professional Model Bass Drum, ten (10) Single Tension Tympani Rods, Mahogany Shells.
- SLINGERLAND Perfection Pedal complete with Spurs and Cymbal Holder.
- Eleven (11) inch Brass Cymbal.
- Hamilton Drum Stand.
- Thirteen (13) inch Chinese Crash Cymbal.
- Nine (9) inch Chinese Tom-Tom.
- SLINGERLAND Crash Cymbal Holder.
- SLINGERLAND Tom-Tom Holder.
- Chinese Wood Block.
- SLINGERLAND Wood Block Holder.
- Pair Hickory Drum Sticks.

Drums for the professional

SNAPPY PARTNER OUTFIT No. 4

\$65⁰⁰

THE ideal Outfit for the semi-professional drummer who desires a good outfit moderately priced. The units of this outfit are carefully selected, best of materials used throughout. A real snappy outfit.

Consists of:

- 4 x 14 Separate Tension Metal Snare Drum, eight (8) rods equipped with speedy sure-hold Snare Strainer.
- 12 x 26 Professional Model Bass Drum, ten (10) single tension tympani rods.
- Mahogany Shell.
- SLINGERLAND Junior Pedal complete with Spurs and Cymbal Holder.
- Eleven (11) inch Brass Cymbal.
- Hamilton Drum Stand.
- Thirteen (13) inch Chinese Crash Cymbal.
- SLINGERLAND Crash Cymbal Holder.
- Chinese Wood Block.
- SLINGERLAND Wood Block Holder.
- Pair Hickory Drum Sticks.

Drums for the professional

DAISY DRUM OUTFIT No. 5

\$54⁵⁰

A LITTLE Daisy Outfit for the part-time drummer. The Snare Drum is a separate tension, professional model. The Bass Drum is light and substantial; a practical size for job work and large enough to give a good volume of tone. Best of accessories used throughout.

Consists of:

- 4 x 14 Separate Tension, Mahogany Wood Shell Snare Drum, six (6) rods.
- 10 x 24 Professional Model Bass Drum, tympani model rods.
- Hamilton Drum Stand.
- SLINGERLAND Junior Pedal complete with Spurs and Cymbal Holder.
- Ten (10) inch Brass Cymbal.
- Twelve (12) inch Chinese Crash Cymbal.
- SLINGERLAND Crash Cymbal Holder.
- Chinese Wood Block.
- SLINGERLAND Wood Block Holder.
- Pair Hickory Drum Sticks.

Drums for the professional

*HONEY BOY OUTFIT No. 6

\$42⁰⁰

THIS outfit has been assembled for home playing and semi-professional drummers. A classy little outfit, adaptable for all-around use. Light in weight and reasonably priced, but just as much care given in assembling as the higher priced outfits.

Consists of:

- 3 x 13 Mahogany Wood Shell Snare Drum, six (6) thumbscrew rods.
- 8 x 24 Tango Bass Drum, Mahogany Shell.
- Hamilton Drum Stand.
- SLINGERLAND Junior Pedal with Spurs and Cymbal Holder.
- Eight (8) inch Brass Cymbal.
- Twelve (12) Chinese Crash Cymbal.
- SLINGERLAND Crash Cymbal Holder.
- Chinese Wood Block.
- SLINGERLAND Wood Block Holder.
- Pair Hickory Drum Sticks.

Drums for the professional

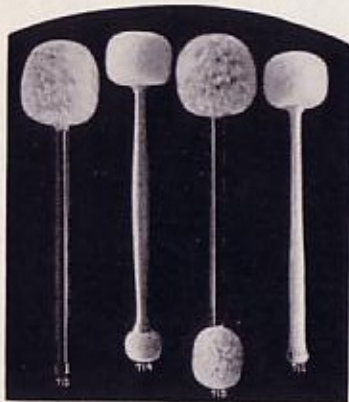
DRUM STICKS



*No.702	703	704	705	706	707	708	709	710
Style1A	2A	3A	5A	6A	2B	5B	5S	1H
Size17"	16"	15½"	16"	15½"	16"	16"	16"	17"

ALL SLINGERLAND Drum Sticks are made from the finest selected straight grained hickory, white stock. The models will never vary, so order by number.

The "A" Models are for Orchestra use; "B" Models for Band Work and "S" and "H" Models for Street Work. Any of above numbers or sizes.....Pair, \$0.35



The numbers 713-714 Bass Drum Sticks are Concert Models; the beaters are soft and light, yet the ball is of a size to bring out full resonant tones with distinctive carrying power. Sticks are made of hickory wood in mahogany finish.

- No. 713—Single End Concert Model.....\$2.50
- No. 714—Double End Concert Model..... 3.00
- The numbers 715-716 are designed for use in large brass bands and street work. The balls are of best grade, white Spanish felt. These sticks will give tremendous volume. Made of hickory wood.
- No. 715—Double End Stick.....\$2.00
- No. 716—Single End Stick..... 1.60

Gold Sticks, Purple Ends

- *No. 789.....14½" } Pair, \$0.75
- *No. 790.....15½" }



Drums for the professional



SLINGERLAND "Blue Ribbon" Sticks are the last word in fast, snappy sticks for the professional. Try a pair and be convinced. Medium weight; each pair packed in separate box. Two sizes only.

- *No. 700.....14½" } Pair, \$0.65
- *No. 701.....15½" }

GENUINE ORIENTAL TOM TOMS AND HOLDERS
TYMPANI STICKS



THESE Oriental Tom Toms are equipped with real pig-skin heads decorated with brilliant colors and Oriental designing. Bright water-proof lacquered finish.

- *No. 718—9".....\$ 3.00
- *No. 719—12"..... 7.50
- *No. 720—15"..... 10.00

TOM TOM HOLDER

The illustration at the right shows holder with Tom Tom ready to play and holder as it appears without Tom Tom.

- No. 721.....\$1.10



Tom Tom and Wood Block Holder

A neat combination holder for Tom Tom and Wood Block that fastens securely to the counterhoop of Bass Drum.

- No. 722.....\$1.50

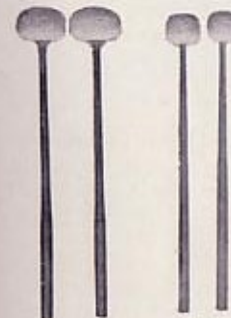


TOM TOM WOOD BLOCK AND COW BELL HOLDER

TYMPANI STICKS

Exceptional care is taken in selecting and making SLINGERLAND Tympani Sticks. Selected straight grained hickory handles; with best felt and lamb's wool balls.

- No. 711—Professional model, Spanish felt.....Per pair, \$2.25
- No. 712—Artist model, natural lamb wool.....Per pair, 2.50
- No. 717—Small model, Spanish felt.....Per pair, 1.75



712

711



A very compact holder that makes a practical and efficient combination.

- No. 723\$1.75

Drums for the professional

SLINGERLAND DRUM PEDALS



Slingerland Speed Drum Pedal

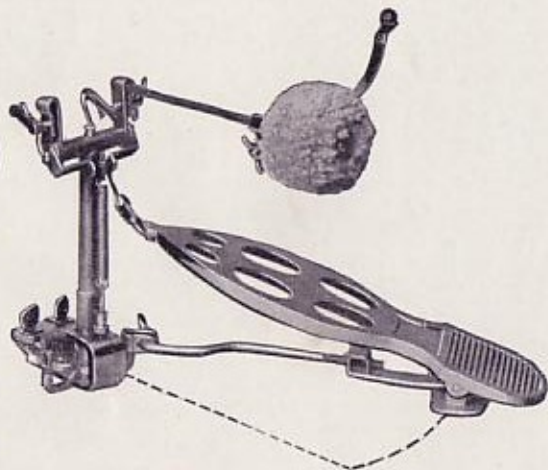
AN alternating pedal that is popular for speed, smooth action and dependability. A high-grade pedal that has met with the approval of professional drummers of the large cities of the country. Working on a direct line from the center. No lost motion; no wobbling. Simple in construction, but like lightning in action and responds to the slightest touch of the drummer's foot.

- *No. 724—Complete with disappearing spurs\$12.00
- *No. 724A—Pedal only..... 10.60

Perfection Universal Pedal

This pedal has met with satisfaction to the drummers due to mechanical features and refinement incorporated in the pedal. Action is easy and responds readily.

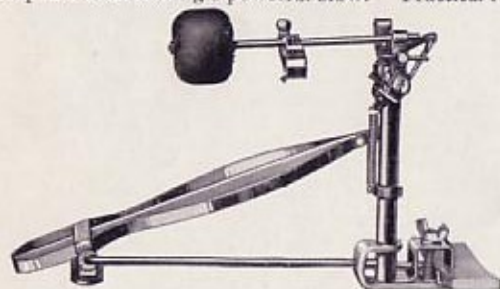
- *No. 725—Pedal only..\$10.00
- *No. 725A—Pedal with cymbal holder and spurs 11.50



Superior Junior Pedal

The pedal shown below is made almost entirely of superior strip steel which makes it very durable and light in weight. A characteristic of the pedal is the very long stroke, capable of delivering a powerful blow. Practical for professional as well as amateur work.

- *No. 726 —Pedal only.....\$6.50
- *No. 726A—Complete with spurs and cymbal holder.... 7.50



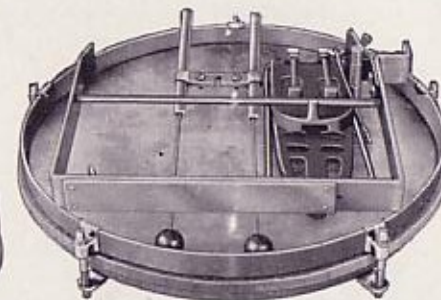
Eclipse Drum Pedal

The best juvenile pedal on the market—a high speed pedal built substantial and will travel as fast as you can make your foot go.

- *No. 727 —Pedal only\$4.50
- *No. 727A—Pedal complete with cymbal holder and spurs 5.50

Drums for the professional

THE DUPLEX AFTER BEAT DRUM



Folded

THE DUPLEX After-Beat Drum offers new effects, perfect and steady rhythm and many novel combinations. We all know that the top and side cymbals are a necessity, but it is our contention that the foot cymbals are necessary. It adds a "Zip" to the music; it builds up and fills in an empty space. The extra fine pedal action makes it sensitive to the very slightest touch. So little effort is required to operate it that it is necessary to barely move the foot to obtain a soft "swish" or sweep after-beat. A pleasing effect that blends nicely with those soft sweet strains of the orchestra, just loud enough to be heard without prominence. When one gets to a hot chorus where everyone is doing the "stuff", just pedal a little harder, and a real "sock" or "flop" that cuts through the band can be had.

The Drum is 12" in diameter. Shell and hoop are made of steel nickel plate. Good quality head is used. To insure an efficiency under all conditions, a tensioning system device is attached to keep head tight. The adjustable heel-guard prevents the instrument from "walking." The after-beat drum has the quick take-down and set-up feature. Entire outfit can be assembled or dismantled in less than a minute. No screws to fool with; no parts to lose.

- *No. 728\$15.00

Patent Pending



Slingerland Sure Grip Spurs

Assuring you of the tightest grip possible. Spur slips up through clamp. Do not have to remove from hoop to adjust. Heavily nickel plated.

- *No. 729, per pr. \$1.40



Double Grip Spurs

This is a very practical spur with double grip on the counterhoop, preventing creeping. Hook is made of strong steel. Heavily nickel plated.

- *No. 730— Per pair...\$1.00



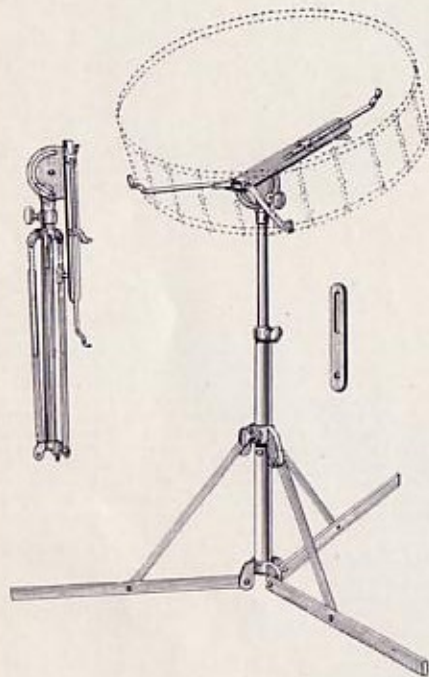
Light Weight Spurs

Single grip all pressed steel. Heavily nickel plated.

- *No. 731— Per pair \$0.50

Drums for the professional

SLINGERLAND BANJO & DRUM COMPANY carry the Hamilton
Stands exclusively because they need no introduction. They are the best
and most serviceable stand built.



Hamilton Superior Drum Stand

The stand for the Jazz Drummer. Made of heavy steel. Very rigid. Heavily nickel plated. Adjustable to any size Snare Drum up to 16".

No. 7.....Each, \$4.00

Hamilton Drum Stand

A sturdy drum stand adjustable to any size Snare Drum up to 16". Heavily nickel plated. Weight 34 oz. Length when folded 16 1/2"

No. 8.....Each, \$3.30



Lone Star Drum Stand

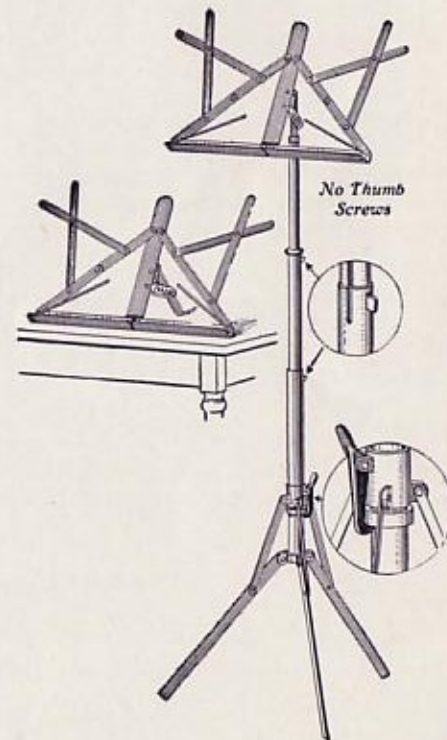
A substantial little stand. Will hold all sizes and styles of Snare Drums, up to 16". Heavily nickel plated. Length when folded 13".

No. 9.....Each, \$2.50

Improved Hamilton Combination Stand

All-around music stand. Extra wide, self-adjustable to any angle. Sure locking. Brass tubes. Heavily nickel plated.

No. 2.....Each, \$3.60



SLINGERLAND ORIENTAL CYMBALS

THESE high-grade imported Cymbals are used and endorsed by leading players all over the world. They are selected and graded by the importer for SLINGERLAND BANJO & DRUM COMPANY.

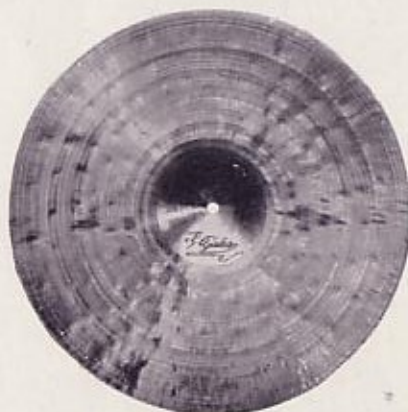
- *No. 732— 8".....Each, \$12.50
- *No. 733—10".....Each, 13.50
- *No. 734—11".....Each, 15.00
- *No. 735—12".....Each, 16.50
- *No. 736—13".....Each, 20.00
- *No. 737—14".....Each, 23.00
- *No. 738—15".....Each, 26.00
- *No. 739—16".....Each, 30.00



Genuine K. Zildjian Cymbals made in Constantinople, Turkey.

THESE Cymbals possess that rich, lingering, powerful and brilliant tone that is characteristic of only high-grade cymbals and are inapproachable in quality.

- No. 740—10".....Each, \$ 5.40
- No. 741—11".....Each, 6.00
- No. 742—12".....Each, 7.20
- No. 743—13".....Each, 9.00
- No. 744—14".....Each, 12.00
- No. 745—15".....Each, 13.50
- No. 746—16".....Each, 15.00



Genuine Italian Ajaha Cymbals

Genuine Chinese Cymbals

High-grade Cymbals, noted for their durability and brilliant crash tone. They are finely tempered and hand hammered.

- *No. 747—12".....\$2.75
- *No. 748—13".....3.25
- *No. 749—14".....3.75

Drums for the professional

SLINGERLAND ALL-AMERICAN MADE CYMBALS

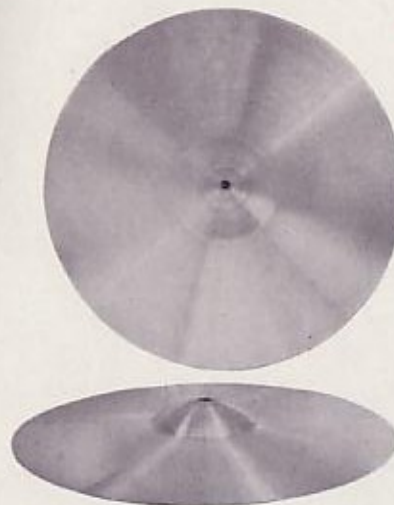
SLINGERLAND'S own make, American Brass Cymbals; spun from special gauge and tempered metal.

- *No. 750— 8".....Each \$0.75
- *No. 751—10".....Each 1.00
- *No. 752—12".....Each 1.50
- *No. 753—13".....Each 2.00

Nickel Silver Cymbals

These cymbals have a different tone than the Brass Cymbals and preferred by many drummers due to the brilliant bell-like tone. They are hand spun, finely polished to a satin silver finish.

- *No. 754— 8".....Each \$1.20
- *No. 755—10".....Each 2.00
- *No. 756—12".....Each 3.00
- *No. 757—13".....Each 3.50



Slingerland Hand Cymbal Holder

Designed for Parade Work and Bass Drummers who also play cymbals. The strap is adjustable to any size hand, giving a perfect grip.

- *No. 758.....\$0.60



Pedal Cymbal Holder

Fastens securely to hoop of Bass Drum, double grip.

- *No. 759.....\$0.85



Drums for the professional

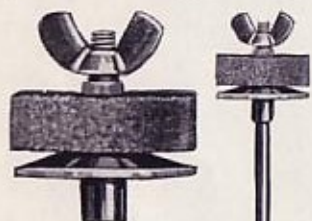
SLINGERLAND CYMBAL EFFECTS AND HOLDERS



Slingerland Universal Cymbal Holder

THIS holder is arranged for "sock" work and holds two cymbals cup-to-cup. Illustrated at left.

*No. 760—Less cymbals.....\$2.50



Slingerland "Simplex" Cymbal Holders

Another cymbal holder that is popular with the drummers. It has a practical clamping device which is fastened independently to cymbal. Very conveniently arranged, by lifting cymbal off upright takes clamp along. It is not necessary to unscrew every time.

*No. 761—Illustration at left.....\$2.00

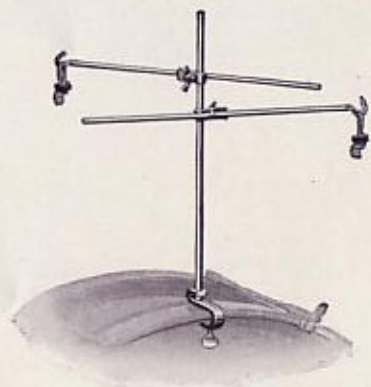
*Enlarged
Rocking Cup
Detached*



Overhanging Crash Cymbal Holder

This holder is designed for drummer who uses two Crash Cymbals. Either arm can be adjusted to the length and height desired.

*No. 762.....\$2.00



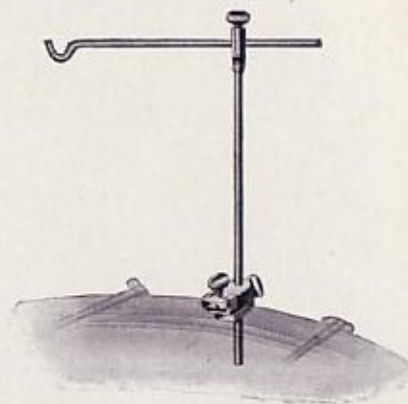
Drums for the professional

SLINGERLAND CYMBAL HOLDERS

Crash Cymbal Holder

SINGLE arm Cymbal Holder that fits securely on the counterhoop—with patented clamp that will not jar loose or mutilate the hoop. Universally adjustable. Heavily nickel plated.

*No. 763—Crash Cymbal Holder.....\$1.10



Perfection Double Rattle

THIS is made of press steel and hard maple with four tongs, all working independently and striking at different intervals. Produces perfect roll.

*No. 764—Perfection Double Rattle.....\$2.50



Spring Crash Cymbal Holder

Adjustable to any angle and length. This holder can be used off center and still have the cymbal level.

*No. 765—Spring Crash Cymbal Holder \$2.50



Band Cymbal Holder

This Cymbal Holder may be used for Band or Crash Cymbal. It is constructed so as to allow the cymbal to vibrate freely; has a patented clamp with movable jaw of spring steel which will conform to the shape of the hoop. This feature makes it absolutely impossible for it to jar loose, and will not mar the counterhoops. Nickel plated.

*No. 766—Band Cymbal Holder.....\$1.00



Drums for the professional

JAZZ STICKS, SONG WHISTLES AND FIFES

Synco Jazz Sticks



FOR startling effects they produce a soft swishing sound when played on a Snare Drum, Tom Tom or Wood Block. Just the thing where the steady beat must be broken as in Oriental or fox-trot numbers.

*No. 767—Jazz Sticks.....Pair, \$0.85

Professional Bird Whistle

The finest bird imitation available. Giving a realistic and carefully voiced effect; made of brass, heavily nickel plated. Used with water with cover cap making it leak-proof.

*No. 768.....\$2.00



Song Whistle



The song whistle is an instrument that is being used effectively in jazz and classical music. It is operated with a slide tremolo effect and notes are made on the same order as the slide trombone. This instrument requires but little practice to master.

*No. 769.....\$1.50

Metal Fife



Most practical and durable metal fife on the market with rubber embouchure Standard model for corps use.

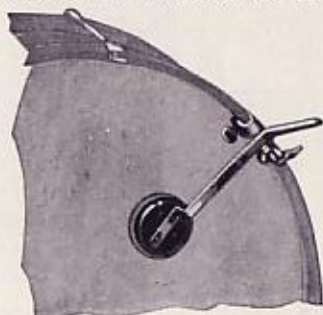
*No. 791—Fife, key of B flat.....\$1.40

*No. 792—Fife, key of C.....1.40

Bass Drum Muffler

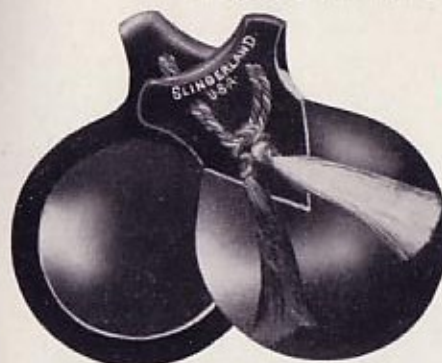
This muffler will subdue the tone of the Bass Drum for fox-trots. Fastens securely to Bass Drum and will not mar the counterhoop.

*No. 770.....\$2.75



Drums for the professional

CASTANETS A LA ESPANOLA



SLINGERLAND Genuine Spanish Hand Castanets possessing the tone desired by professional dancers. Careful selection is made in pairing these castanets to produce the correct tone. They are fastened with a tasseled silk cord.

*No. 771—Hand Castanets
Per pair.....\$0.90



These castanets possess that true characteristic tone desired by theatrical dancers, two pair large size ebony castanets mounted conveniently for the drummer on hard maple wood. Castanets are held securely with best grade gut.

*No. 772—Castanets.....\$2.50



One pair large size ebony castanets mounted on hard maple wood with handle. A set consists of one pair for each hand.

*No. 773—Castanets.....\$1.50

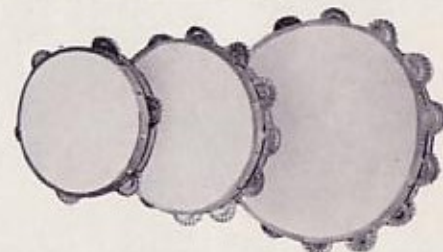
SLINGERLAND TAMBOURINES



Professional Tambourines

Due to the rough usage that tambourines must endure, the SLINGERLAND Tambourine is built substantially to endure that strain. The shell is built of solid shell construction; walnut finish; water-proof calf skin heads which are dependable for tone. All of these professional SLINGERLAND Tambourines have German Silver Jingles of correct size and weight, so as to tingle a clear tone.

No. 774—6½" with 5 pair jingles.....\$1.50
No. 775—8" with 7 pair jingles.....1.75
No. 776—10" with 7 pair jingles.....2.00
No. 777—10" with 9 pair jingles.....2.50



Commercial Tambourines

Altho these Tambourines are moderately priced, they are well constructed, and equipped with good grade of calf skin heads and nickel plated jingles. Appropriate for theatrical use.

	Each	Dozen
No. 778—6½"—6 sets jingles.....	\$0.85	\$ 9.00
No. 779—7½"—6 sets jingles.....	1.00	10.80
No. 780—8"—12 sets jingles.....	1.25	13.50
No. 781—10"—14 sets jingles.....	1.75	19.50

Drums for the professional

SLINGERLAND PRACTICE PAD, SLAP STICKS, TRIANGLES AND BUGLES



THE SLINGERLAND Practice Pad was designed by Frank Fancher, World's Champion Rudimental Drummer. The lightest stroke of the stick will respond distinctly and audibly to the player, but silent to the extent that it will never be heard outside your room. The pad is made of pure gum rubber mounted on wood block, and set on the proper angle. The most practical pad on the market. When in use, it will stay in the correct position at all times.

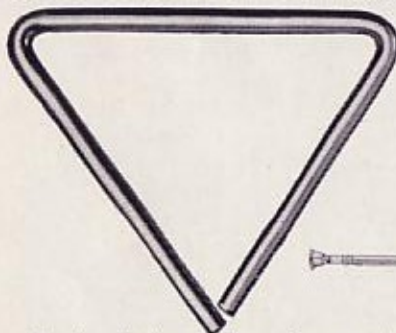
*No. 782 — SLINGERLAND Practice Pad\$2.75

A Slap Stick designed for fast work used in pairs to make a "roll" or "bones" effect. They are extremely light in weight and very popular with the dance and theatre trap drummer.

Tongs 9 3/4" long and 1 3/4" wide.
No. 783—Small Slap Sticks....Per pair, \$2.00

Slap Stick made of hard rock maple with spring hinge. Very satisfactory for novelty and theatrical work.

Tongs 14" long and 2" wide.
No. 784—Large size Slap Sticks....Each, \$1.25



SLINGERLAND Triangles are made of special steel; correct thickness, which gives the required brilliancy and clear tone, distinguishing them as the highest grade made.

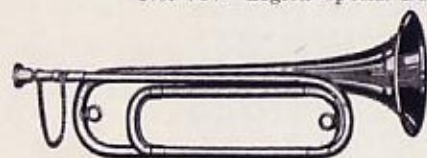
Beater included.
No. 785—8", 1/2" diameter.....\$1.20
No. 786—10", 1/2" diameter.....1.30

Legion Special Bugle



Bugle calls have always been written for the regulation Army Bugle in G with change to F, but many Legion Corps have demanded bugles in B flat for fanfares, and to chord with the B flat instruments in the band. Heretofore, two sets of Bugles were required, or the Corps was limited in its scope. However, necessity is the mother of invention. And in this case it has resulted in this new and wonderful creation, a Bugle in three keys: B flat, G and F.

Specifications—Length over all, 29 1/4"; diameter of bell, 4 3/4"; weight, 1 lb. 6 oz.
*No. 787—Legion Special Bugle, brass highly polished...\$10.00



A regulation model bugle in accordance with government specifications. Has easy slide action. Key of G with slide to F.
*No. 788—SLINGERLAND Regulation Brass Bugle.....\$5.50

Drums for the professional

TRAIN AND STEAM BOAT WHISTLE EFFECTS

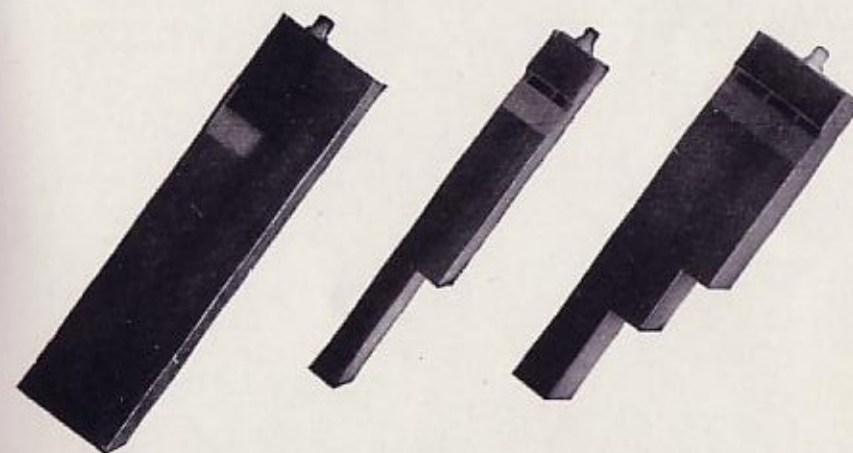


Slingerland Three-tone Boat and Train Whistle

A WHISTLE that will meet the satisfaction of all drummers. Compact and light in weight; made of metal, highly nickel plated. This is the finest whistle of its kind on the market. A fine imitation can be had of steam boat and train call. It has three distinct tones, allowing the drummer to get many variations.

No. 793—Three Tone Whistle.....\$3.00

Wood Whistles



The greatest of care has been taken in the manufacturing of these wood whistles, to have them voiced correctly, and are as perfect as could be desired. Every drummer should have the combination of three whistles.

No. 794—Large Deep Tone—Ocean Whistle.....\$3.00
No. 795—Two Tone Locomotive Whistle.....2.00
No. 796—Three Tone Locomotive or Steamboat Whistle.... 2.50

Drums for the professional

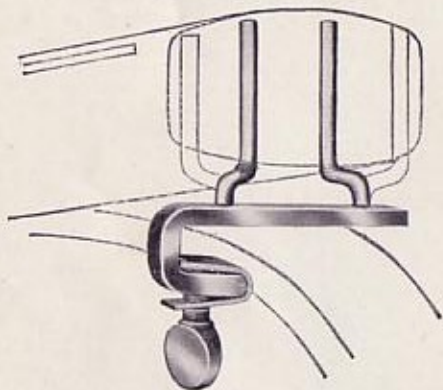
CHINESE WOOD BLOCKS—ORIENTAL
TEMPLE BLOCKS



THESE Chinese Wood Blocks have a decidedly clear tone, resonant and full. The drummer can produce a variety of effects. We make the best selection of wood blocks, but owing to climatic action on Chinese Wood, it is impossible to guarantee these blocks from checking or cracking.

- *No. 797—Small Size.....\$0.75
- *No. 798—Medium Size..... 1.00
- *No. 799—Large Size..... 1.50

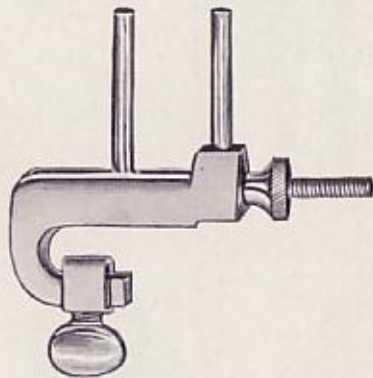
Wood Block Holder



Fastens on hoop of Bass Drum; holds block securely; will fit any size wood block; can be used on either side of drum.

*No. 800.....Price, \$0.50

Adjustable Wood Block Holder



This Holder fastens on the Bass Drum hoop and has a sliding pin with a lock screw which will hold any size block securely without any shake whatever. It places the block in a convenient position and is equipped with the sure grip clamp.

*No. 801.....Price, \$0.75

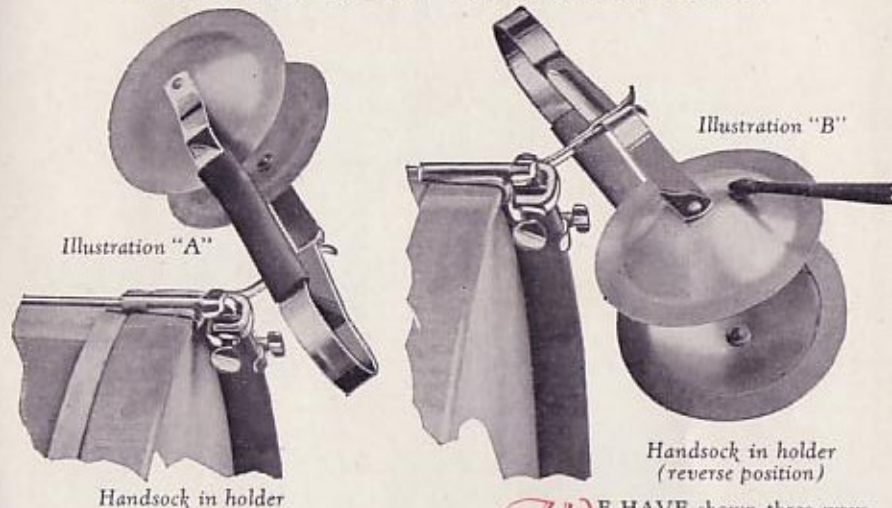


Temple Blocks are becoming more popular every day. They furnish a deeper and richer tone than the largest wood blocks. Owing to the peculiarities of Oriental workmanship, we cannot guarantee perfect intervals in a set.

*No. 802—Complete set of five blocks.....\$30.00

Drums for the professional

FOOT AND "SOCK" CYMBAL EFFECTS



WE HAVE shown three ways for using and holding the new SLINGERLAND Hand Sock; in illustration "A," the hand sock is in holder attached to hoop of drum ready to grab and play instantly. Illustration "B" shows the hand sock in holder, reverse position for playing with stick on bell-tone cymbal. Illustration "C" gives an idea of the way it is used in the hand.

No. 803—Hand sock complete with cymbals and holder.....\$3.50

"High Hat" Sock Cymbal Pedal

Unequaled for all manner of cymbal effects. For single crashes, it has all the utility of any other holder. Sizzle effects are easily obtained by holding the two cymbals together with a light pressure of the foot, then you can have "free" cymbals for tap work instantly by releasing the foot. Stick work can be combined with quick "Socks" of any degree desired. "Cut-offs" are ever at your command without having to use the hand. Just the right height. Adjustable to length of stroke. Any make or size of cymbals can be used. Folds compactly. A great flash.

No. 804—Pedal and Stand (cymbals not included).....\$8.50

High Hat Charleston Pedal

Drums for the professional

SOCK CYMBAL PEDAL

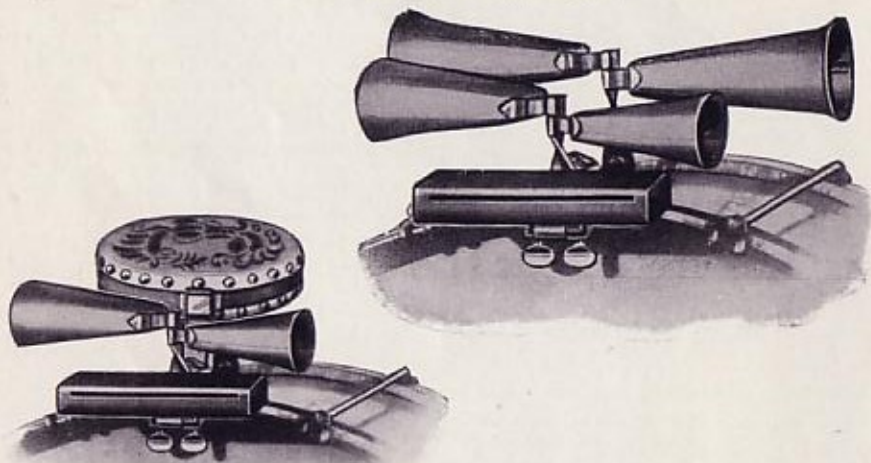
THE finest Sock Pedal yet devised. Produces the exact effect when used with SLINGERLAND deep cup Cymbals. Folds compactly; great for dance drummers or vaudeville work.

No. 805—Pedal complete (no cymbals)\$5.00

No. 806—Deep cup cymbals Each, 1.50



COWBELL, WOOD BLOCK AND TOM TOM HOLDERS



THESE are the most practical, compact, and lightest devices of their kind on the market today.

Very simple in construction. Can be taken apart and assembled in less than a minute. Just hook the attachments on and they are there to stay. No screws to tighten. The loops which are attached to the cowbells, etc., fit firmly on to the holder. Fastened to the counterhoop with Sure Grip Clamp, which will not mar the hoops or jar loose.

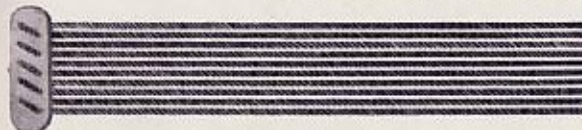
*No. 807—Four tuned cowbells and holder.....\$6.00

*No. 808—Two tuned cowbells and holder..... 4.50

Drums for the professional

DRUM SNARES, STRAINER AND DRUM SLINGS

Slingerland Silk Wire Snares



MADE of pure silk cord, wound carefully with non-rusting and non-corroding wire. Furnished in two sizes with snare butt.

No. 809—Regulation orchestra size, 14 gauge, 12 lengths.....\$1.00

No. 810—Small size, 15 gauge, 12 lengths..... 1.00



Finest grade gut is selected for our gut snares. Used for orchestra, band or street work with fine results, regardless of the size of the orchestra or band, if properly adjusted.

No. 811—Set of 12 snares on butt, orchestra size, 14 gauge.....\$1.50

No. 812—Set of 12 snares on butt, band size, 12 gauge..... 1.80



The Junior Snare Strainer is very reliable and well constructed, and very simple to operate. Absolutely noiseless and cannot be jarred loose. Works rapidly and there are no springs or complicated parts to get out of order. By raising a small lever, the snares are instantly removed from the head, which converts the drum into a Tom Tom or Indian Drum and by pressing lever down, the tension is instantly restored without affecting the snares.

No. 813.....\$2.00

Slingerland Adjustable Khaki Webbing Slings



The SLINGERLAND Bass Drum Sling is made of the best grade khaki webbing, broad enough so it will not cut your shoulders. It is adjustable to length and has good pressed steel; nickel plated hoops and snap.

No. 814.....\$1.50



Standard white heavy leather Dress Parade Sling with both neck and waist strap. Every drum corps should be equipped with these slings, which add greatly to the appearance of your uniform. The drum is held securely in place and cannot swing. State waist measure.

*No. 816.....\$4.25



Adjustable Snare or Street Drum Sling; correct width; made of best grade khaki webbing; nickel plated trimmings with a swivel snap.

No. 815.....\$1.20

Drums for the professional

SLINGERLAND TRAP AND DRUM CASES

A ROUND model case made of best quality fibre with genuine leather binding. Double sewed edges, which reinforces the case and makes it stand up under heavy usage. Equipped with heavy leather buckle strap and handle. Will fit the following size drums.

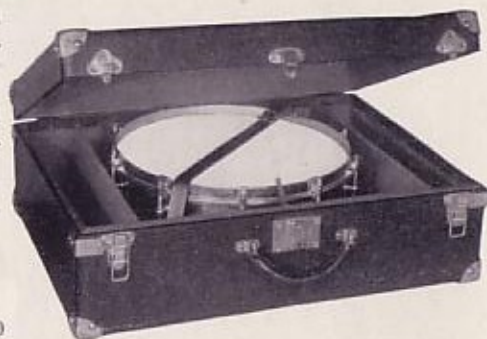
*No. 817—4x14, 5x14, 6½x14.....\$6.00



SLINGERLAND suit case model with tray. Plenty of room to carry cymbals and various other traps.

Made with veneered frame, Keratol covered. Substantial and practical for general use, being light weight. Special lock and clasps, all corners reinforced.

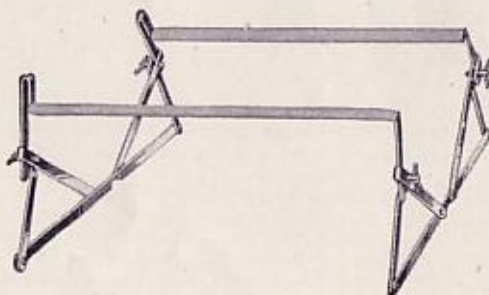
*No. 818—For 14" and 15" diameters and 4", 5" or 6½" depth drums.....Price, \$12.50



A practical item for every band drummer who appreciates getting the best tone from his Bass Drum and convenience in playing.

Folding type.
Fully adjustable.

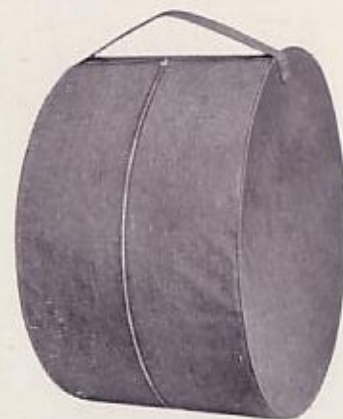
No. 819.....Price, \$4.50



Drums for the professional

SLINGERLAND ZIP-LOK AND MACKINTOSH COVERS

THESE covers are made of the same material as the Zip-Lok, but fasten with snap buttons. Covers are well sewed and reinforced at seams.



THESE covers are made of the heaviest weave mackintosh cloth with the genuine Zip-Lok fasteners. You can open and close them without any friction whatsoever. Covers are well sewed and reinforced at the seams.

Mackintosh Button Covers

Snare Drum Covers

	EACH
*No. 826 for 3 x14 Drum.....	\$ 2.40
*No. 827 for 3 x15 Drum.....	2.40
*No. 828 for 4 x14 Drum.....	2.40
*No. 829 for 4 x15 Drum.....	2.40
*No. 830 for 5 x14 Drum.....	2.40
*No. 831 for 5 x15 Drum.....	2.40
*No. 832 for 6½x14 Drum.....	2.50
*No. 833 for 6½x15 Drum.....	2.50

Street Drum Covers

*No. 834 for 12x15 Drum.....	\$ 3.50
*No. 835 for 10x14 Drum.....	3.50
*No. 836 for 10x16 Drum.....	3.50
*No. 837 for 12x16 Drum.....	3.50
*No. 838 for 12x17 Drum.....	3.50

Bass Drum Covers

	EACH
*No. 839 for 6x24 Drum.....	\$ 4.90
*No. 840 for 8x24 Drum.....	5.00
*No. 841 for 10x24 Drum.....	5.20
*No. 842 for 12x24 Drum.....	5.50
*No. 843 for 14x24 Drum.....	5.50
*No. 844 for 10x26 Drum.....	5.90
*No. 845 for 12x26 Drum.....	6.00
*No. 846 for 14x26 Drum.....	6.50
*No. 847 for 16x26 Drum.....	6.50
*No. 848 for 12x28 Drum.....	6.50
*No. 849 for 14x28 Drum.....	6.50
*No. 850 for 16x28 Drum.....	7.00
*No. 851 for 12x30 Drum.....	7.00
*No. 852 for 14x30 Drum.....	7.00
*No. 853 for 16x30 Drum.....	8.00
*No. 854 for 18x30 Drum.....	8.00
*No. 855 for 12x32 Drum.....	8.00
*No. 856 for 14x32 Drum.....	8.00
*No. 857 for 16x32 Drum.....	8.00
*No. 858 for 18x32 Drum.....	9.00
*No. 859 for 12x34 Drum.....	9.00
*No. 860 for 14x34 Drum.....	9.00
*No. 861 for 16x34 Drum.....	9.00
*No. 862 for 18x34 Drum.....	10.00
*No. 863 for 14x36 Drum.....	10.00
*No. 864 for 16x36 Drum.....	10.00
*No. 865 for 18x36 Drum.....	10.00

Genuine Zip-Lok Covert Covers (Individually Packed)

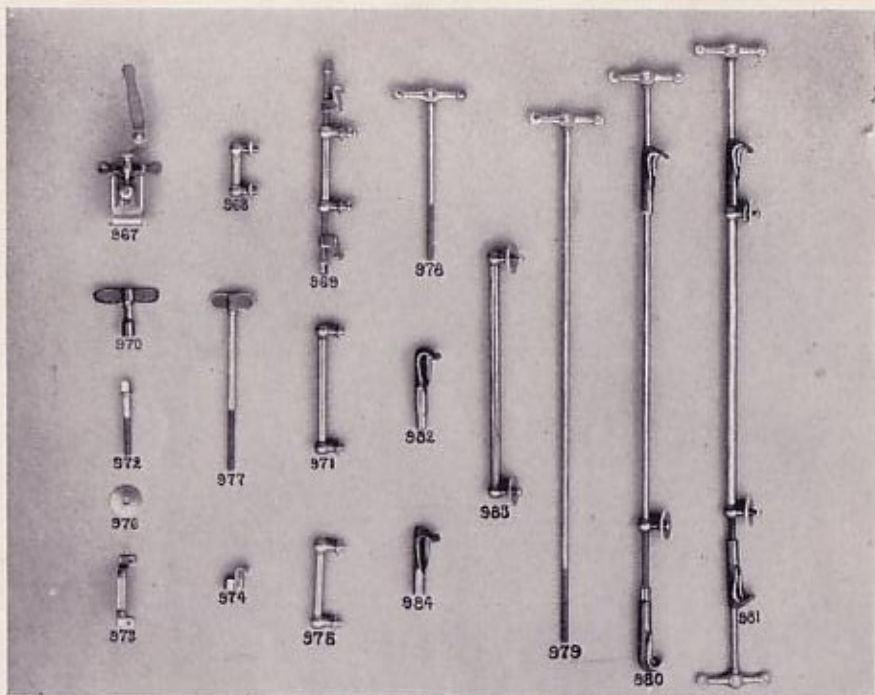
Snare Drum Covers	EACH
*No. 866 for 4 x14 Drum.....	\$3.90
*No. 867 for 4 x15 Drum.....	3.90
*No. 868 for 5 x14 Drum.....	3.90
*No. 869 for 5 x15 Drum.....	3.90
*No. 870 for 6½x14 Drum.....	4.00
*No. 871 for 6½x15 Drum.....	4.20

Street Drum Covers	EACH
*No. 872 for 12x15 Drum.....	\$5.00
*No. 873 for 10x16 Drum.....	5.60
*No. 874 for 12x16 Drum.....	5.80
*No. 875 for 12x17 Drum.....	6.40

Bass Drum Covers	EACH
*No. 876 for 6x24 Drum.....	\$7.40
*No. 877 for 8x24 Drum.....	7.40
*No. 878 for 10x24 Drum.....	8.30
*No. 879 for 12x24 Drum.....	8.30
*No. 880 for 14x24 Drum.....	8.80
*No. 881 for 10x26 Drum.....	8.80
*No. 882 for 12x26 Drum.....	8.80
*No. 883 for 14x26 Drum.....	8.80
*No. 884 for 16x26 Drum.....	8.80
*No. 885 for 12x28 Drum.....	8.80
*No. 886 for 14x28 Drum.....	8.80

Drums for the professional

SLINGERLAND DRUM REPAIR PARTS



No. 967—Speedy Sure Hold Snare Strainer.....	Each	\$4.00
No. 968—4" Metal Drum Lugs.....	Each	.60
No. 969—Lugs Complete for Metal Drums.....	Each	1.25
No. 970—Metal Drum Key.....	Each	.20
No. 971—6" Metal Drum Lugs.....	Each	.60
No. 972—Metal Drum Collar Screw.....	Each	.30
No. 973—Metal Drum Strainer Butt.....	Each	.50
No. 974—Metal Drum Hook.....	Each	.20
No. 975—5" Metal Drum Lugs.....	Each	.60
No. 976—Bass Drum Center Support Washer.....	Each	.06
No. 977—Bass Drum Thumbscrew Rod.....	Each	.50
No. 978—Bass Drum Separate Tension Rod.....	Each	.60
No. 979—Bass Drum Center Support Rods.....	Each	.60
No. 980—Bass Drum Center Support Rods complete.....	Each	.75
No. 981—Bass Drum Separate Tension Lug complete.....	Each	1.25
No. 982—Bass Drum Tube Hook.....	Each	.50
No. 983—Bass Drum Separate Tension Lug.....	Each	.70
No. 984—Bass Drum End Hook.....	Each	.40

SUNDRIES

*No. 887—Counterhoop for Snare Drum, Rock Maple, Single.....	\$2.50
*No. 888—Counterhoop for Bass Drum, Rock Maple, Single.....	3.25
*No. 889—Flesh Hoop for Snare Drum, Maple.....	.80
*No. 890—Tucking, either Snare or Batter Head, on any size Snare Drum Flesh Hoop.....	.50
*No. 891—Flesh Hoop, Maple, for Bass Drum, Single.....	1.25
*No. 892—Tucking Head on Bass Drum Flesh Hoop.....	1.00
*No. 893—Tambourine Jingles, nickel plated.....	Per Doz. .40
*No. 894—Tambourine Tacks, nickel plated.....	Per 100 .30

Drums for the professional



THIS illustration gives you an idea of the SLINGERLAND modern head plant, located across the street from the main 47th Street entrance of the Chicago Union Stock Yards, making it convenient to procure fresh skins every morning, which are the only kind used, therefore the heads are strong and give a snappy tone.

SLINGERLAND "White Peak" selected heads are smooth, clear, white and even in texture. Unexcelled for appearance and durability.

White Peak Banjo Heads

Selected Calf		Each
No. 523—10" for 7" Shell.....		\$0.90
No. 524—11" for 8" Shell.....		1.10
No. 525—12" for 9" Shell.....		1.20
No. 526—13" for 10" Shell.....		1.50
No. 527—14" for 11" Shell.....		1.75
No. 528—15" for 12" Shell.....		2.00
No. 529—16" for 13" Shell.....		2.25

Transparent Banjo and Tambourine Heads

Selected Calf		Each
No. 407—12" for 9" Shell.....		\$1.00
No. 408—13" for 10" Shell.....		1.25
No. 409—14" for 11" Shell.....		1.50
No. 410—15" for 12" Shell.....		1.75
No. 411—16" for 13" Shell.....		2.00

White Peak Snare Drum Heads

Selected Calf		Each
No. 530—17" for 13" Shell.....		\$2.75
No. 531—18" for 14" Shell.....		3.25
No. 532—19" for 15" Shell.....		3.50
No. 533—20" for 16" Shell.....		3.75
No. 534—21" for 17" Shell.....		4.00
No. 535—22" for 18" Shell.....		4.20

Special White Peak, Very Thin

Selected Calf		Each
No. 500—17" for 13" Shell.....		\$3.75
No. 501—18" for 14" Shell.....		4.00
No. 502—19" for 15" Shell.....		4.25
No. 503—20" for 16" Shell.....		4.50
No. 504—21" for 17" Shell.....		4.75
No. 505—22" for 18" Shell.....		5.00

White Peak Bass Drum Heads

Selected Calf		Each
No. 540—28" for 24" Shell.....		\$6.00
No. 541—30" for 26" Shell.....		7.00
No. 542—32" for 28" Shell.....		8.00
No. 543—34" for 30" Shell.....		9.00
No. 544—36" for 32" Shell.....		10.00
No. 545—38" for 34" Shell.....		12.00
No. 546—40" for 36" Shell.....		13.50
No. 547—42" for 38" Shell.....		14.00
No. 548—44" for 40" Shell.....		15.00

Transparent Slunk, 100%

Specify Snare or Batter		Each
No. 512—17" for 13" Shell.....		\$3.00
No. 513—18" for 14" Shell.....		3.20
No. 514—19" for 15" Shell.....		3.40
No. 515—20" for 16" Shell.....		3.60
No. 516—21" for 17" Shell.....		3.80
No. 517—22" for 18" Shell.....		4.00

Wallaby Bass Drum Heads

Selected Calf		Each
No. 561—28" for 24" Shell.....		\$4.00
No. 562—30" for 26" Shell.....		4.50
No. 563—32" for 28" Shell.....		5.00
No. 564—34" for 30" Shell.....		5.50
No. 565—36" for 32" Shell.....		6.00

Transparent Slunk, No. 2 Quality—Slightly Off Color

Specify Snare or Batter		Each
No. 412—17" for 13" Shell.....		\$2.60
No. 413—18" for 14" Shell.....		2.80
No. 414—19" for 15" Shell.....		3.00
No. 415—20" for 16" Shell.....		3.20
No. 416—21" for 17" Shell.....		3.40
No. 417—22" for 18" Shell.....		3.60

Wallaby Heads

Selected Calf		Each
No. 550—10" for 7" Shell.....		\$0.50
No. 551—12" for 9" Shell.....		.75
No. 552—14" for 11" Shell.....		.90
No. 553—15" for 12" Shell.....		1.10
No. 554—16" for 13" Shell.....		1.30
No. 555—17" for 13" Shell.....		1.50
No. 556—18" for 14" Shell.....		1.70
No. 557—19" for 15" Shell.....		1.90
No. 558—20" for 16" Shell.....		2.00
No. 559—21" for 17" Shell.....		2.20
No. 560—22" for 18" Shell.....		2.50

Clear, Transparent and Even Tympani Heads

Selected Calf		Each
No. 580—28" for 23" Shell.....		\$ 7.00
No. 581—30" for 24" Shell.....		8.00
No. 582—32" for 25" Shell.....		9.00
No. 583—33" for 27" Shell.....		10.00
No. 584—34" for 28" Shell.....		11.00
No. 585—36" for 30" Shell.....		12.00

NOTE—As the price of raw skins fluctuates, head prices cannot be guaranteed and are subject to change without notice

SLINGERLAND
TRIUMPHS
in
DRUM
CRAFTSMANSHIP

