

 **SONOR**<sup>®</sup>

DRUMS

PERCUSSION

ACCESSORIES

# drums & percussion

EFFECTIVE FEBRUARY 2004

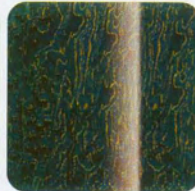




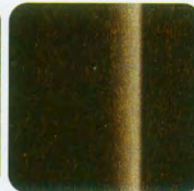
# FIND YOUR PERFECT DESIGNER FINISH

WARNING: COLOR CHOICES ARE LIMITED ONLY BY YOUR IMAGINATION!

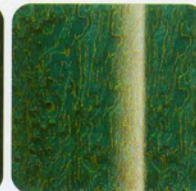
## STAIN FINISHES



SB Stain Blue



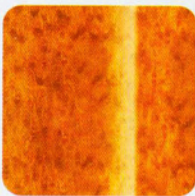
SBK Stain Black



SG Stain Green



SR Stain Red



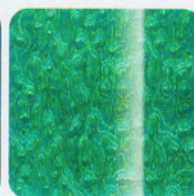
BAM Birdseye Amber



BCH Birdseye Cherry



BEB Birdseye Blue



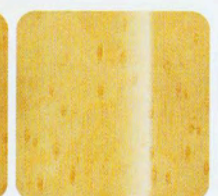
BAZ Birdseye Azure



BDA Birdseye Dark Amber



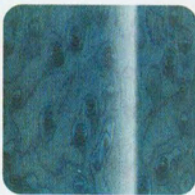
BBB Birdseye Brightly Brown



BBE Birdseye Brightly



BBR Birdseye Brown



BED Birdseye Denim



BER Birdseye Red



BP Birdseye Purple



BRR Brightly Roots



BR Blue Roots



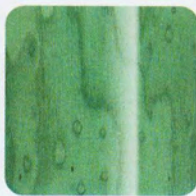
WNR Walnut Roots



W Walnut



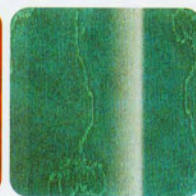
IBH Icebirch Honey



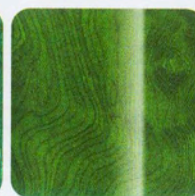
TS Turquoise



C Cherry



AZ Azure



GC Green Clouds



HC Heaven Clouds



WD White Dunes



SD Sand Dunes



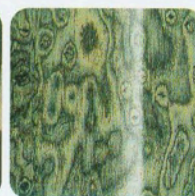
RD Redwine Dunes



DD Desert Dunes



TRI Tribal



MG Marble Grey

## NATURAL WOOD FINISHES



WA Walnut



BM-1 Birdseye Maple



MB Scandinavian Birch



RH Bubinga



# DESIGNER DRUMS

## SPECIFICATIONS CUSTOM ORDERED DRUMS:

**LUG STYLE:** Single-Short (S), Double-Long (D)

**MOUNTING:** Designer or No Mounts

**SHELL TYPE:** Maple Light (ML), Birch (B), Beech (BH)

**MAPLE LIGHT & BEECH:** Nine-Ply Maple, 6.7 MM Tom Toms, Floor Toms, Snare Drums. Twelve-Ply Maple, 8.8 MM Bass Drums

**BIRCH:** Nine-Ply Birch, 5.0 MM Tom Toms (8"-10"), Eleven-Ply Birch, 5.5 MM Snare Drums, Tom Toms (12"-16"), 15-Ply Birch, 6.75 MM Bass Drums, Floor Toms (18"-24")

## SNARE DRUMS

ITEM NO.	DESCRIPTION	PRICE
DSS 1005ML	10x5 Wood Snare	\$ 899
DSS 1205ML	12x5 Wood Snare	949
DSS 1404ML	14x4 Wood Snare	1049
DSS 1405ML	14x5 Wood Snare	1099
DSS 1406ML	14x6.5 Wood Snare	1149
DSS 1408ML	14x8 Wood Snare	1199

## COMPONENTS

### SINGLE LUG

MAPLE LIGHT	BIRCH	DESCRIPTION	PRICE
DBS 1814ML	DBS 1814B	Bass Drum — 18x14	\$2299
DBS 1816ML	DBS 1816B	Bass Drum — 18x16	2299
DBS 2014ML	DBS 2014B	Bass Drum — 20x14	2399
DBS 2016ML	DBS 2016B	Bass Drum — 20x16	2399
DBS 2018ML	N/A	Bass Drum — 20x18	2399
DBS 2214ML	DBS 2214B	Bass Drum — 22x14	2599
DBS 2216ML	DBS 2216B	Bass Drum — 22x16	2599
DBS 2218ML	N/A	Bass Drum — 22x18	2599
DBS 2414ML	DBS 2414B	Bass Drum — 24x14	2699
DBS 2416ML	DBS 2416B	Bass Drum — 24x16	2699
DBS 2418ML	N/A	Bass Drum — 24x18	2699
DTS 808ML	DTS 808B	Tom Tom — 8x8	799
DTS 1008ML	DTS 1008B	Tom Tom — 10x8	849
DTS 1009ML	DTS 1009B	Tom Tom — 10x9	849
DTS 1010ML	N/A	Tom Tom — 10x10	849
DTS 1208ML	DTS 1208B	Tom Tom — 12x8	899
DTS 1210ML	DTS 1210B	Tom Tom — 12x10	899
DTS 1212ML	N/A	Tom Tom — 12x12	899
DTS 1309ML	DTS 1309B	Tom Tom — 13x9	999
DTS 1311ML	DTS 1311B	Tom Tom — 13x11	999
DTS 1313ML	N/A	Tom Tom — 13x13	999
DTS 1410ML	DTS 1410B	Tom Tom — 14x10	1099
DTS 1412ML	DTS 1412B	Tom Tom — 14x12	1099
DTS 1414ML	DTS 1414B	Tom Tom — 14x14	1099
DTS 1511ML	DTS 1511B	Tom Tom — 15x11	1199
DTS 1513ML	DTS 1513B	Tom Tom — 15x13	1199
DTS 1515ML	N/A	Tom Tom — 15x15	1199
DTS 1614ML	DTS 1614B	Tom Tom — 16x14	1299
DTS 1616ML	N/A	Tom Tom — 16x16	1299
DFS 1414ML	DFS 1414B	Floor Tom — 14x14	1399
DFS 1416ML	DFS 1416B	Floor Tom — 14x16	1399
DFS 1616ML	DFS 1616B	Floor Tom — 16x16	1599
DFS 1618ML	N/A	Floor Tom — 16x18	1599
DFS 1816ML	DFS 1816B	Floor Tom — 18x16	1699
DFS 1818ML	N/A	Floor Tom — 18x18	1699

### DOUBLE LUGS

MAPLE LIGHT	BIRCH	DESCRIPTION	PRICE
DBD 1814ML	DBD 1814B	Bass Drum — 18x14	\$2299
DBD 1816ML	DBD 1816B	Bass Drum — 18x16	2299
DBD 2014ML	DBD 2014B	Bass Drum — 20x14	2399
DBD 2016ML	DBD 2016B	Bass Drum — 20x16	2399
DBD 2018ML	N/A	Bass Drum — 20x18	2399
DBD 2214ML	DBD 2214B	Bass Drum — 22x14	2599
DBD 2216ML	DBD 2216B	Bass Drum — 22x16	2599
DBD 2218ML	N/A	Bass Drum — 22x18	2599
DBD 2414ML	DBD 2414B	Bass Drum — 24x14	2699
DBD 2416ML	DBD 2416B	Bass Drum — 24x16	2699
DBD 2418ML	N/A	Bass Drum — 24x18	2699
DTD 808ML	DTD 808B	Tom Tom — 8x8	799
DTD 1008ML	DTD 1008	Tom Tom — 10x8	849
DTD 1009ML	DTD 1009B	Tom Tom — 10x9	849
DTD 1010ML	N/A	Tom Tom — 10x10	849
DTD 1208ML	DTD 1208B	Tom Tom — 12x8	899
DTD 1210ML	DTD 1210B	Tom Tom — 12x10	899
DTD 1212ML	N/A	Tom Tom — 12x12	899
DTD 1309ML	DTD 1309B	Tom Tom — 13x9	999
DTD 1311ML	DTD 1311B	Tom Tom — 13x11	999
DTD 1313ML	N/A	Tom Tom — 13x13	999
DTD 1410ML	DTD 1410B	Tom Tom — 14x10	1099
DTD 1412ML	DTD 1412B	Tom Tom — 14x12	1099
DTD 1414ML	DTD 1414B	Tom Tom — 14x14	1099
DTD 1511ML	DTD 1511B	Tom Tom — 15x11	1199
DTD 1513ML	DTD 1513B	Tom Tom — 15x13	1199
DTD 1515ML	N/A	Tom Tom — 15x15	1199
DTD 1614ML	DTD 1614B	Tom Tom — 16x14	1299
DTD 1616ML	N/A	Tom Tom — 16x16	1299
DFD 1414ML	DFD 1414B	Floor Tom — 14x14	1399
DFD 1416ML	DFD 1416B	Floor Tom — 14x16	1399
DFD 1616ML	DFD 1616B	Floor Tom — 16x16	1599
DFD 1618ML	N/A	Floor Tom — 16x18	1599
DFD 1816ML	DFD 1816B	Floor Tom — 18x16	1699
DFD 1818ML	N/A	Floor Tom — 18x18	1699

Custom design is redefined by the new Designer

Drums palette of color

finishes. You can literally choose among thousands of solid color lacquers and Sonor will handcraft your Designer kit for you. Just contact your Sonor dealer, send in a swatch of your favorite color and Sonor will take care of the rest. Or choose among the 31 new exclusive Designer stain finishes or the four natural finishes.

\*Contact your Sonor dealer for Designer ordering procedure details.





# DELITE DRUMS

## SPECIFICATIONS

**SHELL CONSTRUCTION:** Nine-Ply Vintage CLTF\* Maple Shell, 6.3 MM for Snare & Bass Drums with Six-Ply Vintage CLTF Maple Shell, 4.2 MM Tom Toms and Floor Toms, with 2.1 MM Dynamic Edge Reinforcement Hoops on both

\*Cross Laminated Tension Free

## SHELL SET CONFIGURATIONS

ITEM NO.	DESCRIPTION	PRICE
D 6422S	Shell Set (without Tom Holder) (22x17, 10x9, 12x10, 14x12)	\$3699
D 6420S	Shell Set (without Tom Holder) (20x17, 10x9, 12x10, 14x12)	3599



Delite Maple Snare

## COMPONENT DRUMS

### BASS DRUMS

ITEM NO.	DESCRIPTION	PRICE
D 1816BD	18x16 Bass Drum	\$1549
D 2017BD	20x17 Bass Drum	1699
D 2217BD	22x17 Bass Drum	1799
D 2417BD	24x17 Bass Drum	1899

### TOM TOMS

ITEM NO.	DESCRIPTION	PRICE
D 808T	8x8 Tom Tom	\$499
D 1008T	10x8 Tom Tom	549
D 1009T	10x9 Tom Tom	549
D 1209T	12x9 Tom Tom	599
D 1210T	12x10 Tom Tom	599
D 1310T	13x10 Tom Tom	649
D 1311T	13x11 Tom Tom	649
D 1411T	14x11 Tom Tom	799
D 1412T	14x12 Tom Tom	799
D 1613T	16x13 Tom Tom	849
D 1614T	16x14 Tom Tom	849

### FLOOR TOMS

ITEM NO.	DESCRIPTION	PRICE
D 1414FT	14x14 Floor Tom	\$899
D 1616FT	16x16 Floor Tom	949
D 1816FT	18x16 Floor Tom	1049

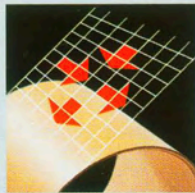
### SNARE DRUMS

ITEM NO.	DESCRIPTION	PRICE
D 1404M	14x4 Maple Snare w/Die-Cast Rims	\$899
D 1405M	14x5 Maple Snare w/Die-Cast Rims	899
D 1406M	14x6 Maple Snare w/Die-Cast Rims	899





The extremely thin and thus lightweight Delite VMS Vintage Maple Shells are made according to the unique CLTF (Cross Laminated Tension Free) Shell Compression System. CLTF utilizes special oil-heated presses to produce shells that retain their shape & provide consistent acoustic projection. Only high grade, aged U.S. rock maple wood is used, ensuring outstanding resonance across all frequency levels and maximum sound output.



Newly designed Low Mass Fittings add to the exclusive design of the Delite Series and offer a balanced sound volume with excellent sustain. According to latest scientific research, Sonor's A.P.S. (Advanced Projection System) and the newly designed T.A.R. (Total Acoustic Resonance) tom holder system form a perfect unit, which fully preserves the drum's vibration energy.

With the Ax Ball Clamp tom holder all toms can be mounted at multi variable positions and set up speed is increased considerably. Sonor's acclaimed prism clamps on bass drum spurs, tom and floor tom mounts and on tom holder brackets (T.A.R.) offer high dependability even under extreme playing conditions.

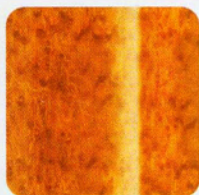


PHOTO BY OLIVER LIND

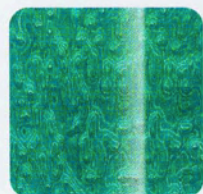
## FINISHES: A DELITE FOR YOUR EYES!



PF Platinum Fade



BAM Birdseye Amber



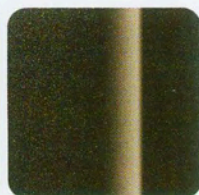
BAZ Birdseye Azure



BCH Birdseye Cherry



MM Metallic Marine



BB Brilliant Black



BC Brilliant Champagne





# S CLASS DRUMS

## SPECIFICATIONS

**SHELL CONSTRUCTION:** Nine-Ply CLTF\* Maple Shell, 8.0 MM Bass Drums, 5.0 MM Snare, Tom Toms and Floor Toms *\*Cross Laminated Tension Free*

## SHELL SET CONFIGURATIONS

ITEM NO.	DESCRIPTION	PRICE
S 5420S	Shell Set with DTH 3213AX Tom Holder (20x17.5, 10x9, 12x10, 14x12)	\$2599
S 5422S	Shell Set with DTH 3213AX Tom Holder (22x17.5, 10x9, 12x10, 14x12)	2649
S 5520S	Shell Set with DTH 3213AX Tom Holder (20x17.5, 10x9, 12x10, 14x14, 14x5)	3199
S 5522S	Shell Set with DTH 3213AX Tom Holder (22x17.5, 12x10, 13x11, 16x16, 14x5)	3299

## COMPONENT DRUMS

### BASS DRUMS

ITEM NO.	DESCRIPTION	PRICE
S 1816BD	18x16 Bass Drum	\$1149
S 2017BD	20x17.5 Bass Drum	1179
S 2217BD	22x17.5 Bass Drum	1199

### TOM TOMS

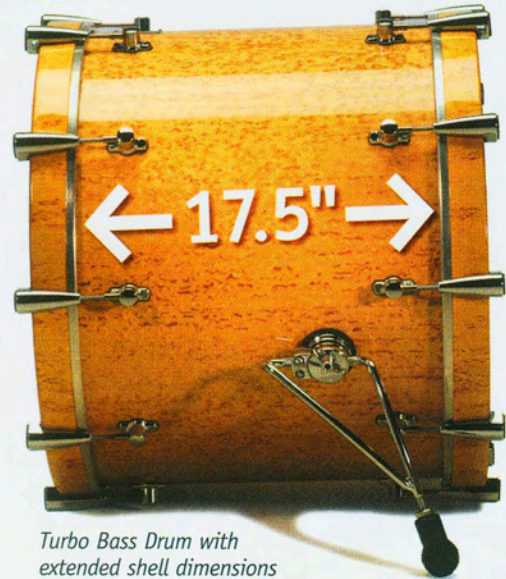
ITEM NO.	DESCRIPTION	PRICE
S 0808T	8x8 Tom Tom	\$349
S 1009T	10x9 Tom Tom	379
S 1210T	12x10 Tom Tom	419
S 1311T	13x11 Tom Tom	429
S 1412T	14x12 Tom Tom	479
S 1614T	16x14 Tom Tom	549

### FLOOR TOMS

ITEM NO.	DESCRIPTION	PRICE
S 1414FT	14x14 Floor Tom	\$579
S 1616FT	16x16 Floor Tom	599

### SNARE DRUMS

ITEM NO.	DESCRIPTION	PRICE
S 1405M	14x5 Maple Snare	\$499
S 1405MDC	14x5 Maple Snare w/Die-Cast Rims	649
S 1405B	14x5 Brass Snare w/Die-Cast Rims	679
S 1405S	14x5 Steel Snare	549
S 1305P-GM	13x5 Soprano Snare w/Prism Bracket	479

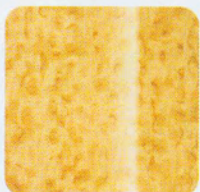


*Turbo Bass Drum with extended shell dimensions*



*13x5 Soprano Snare*

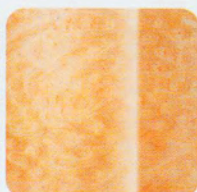
## FINISHES: S CLASSY LOOKS!



TLG Grained Maple



TLA Aqua Green



TLM Misty Rose



TLE Emerald Green



TLN Natural



TLC Cherry



B Piano Black

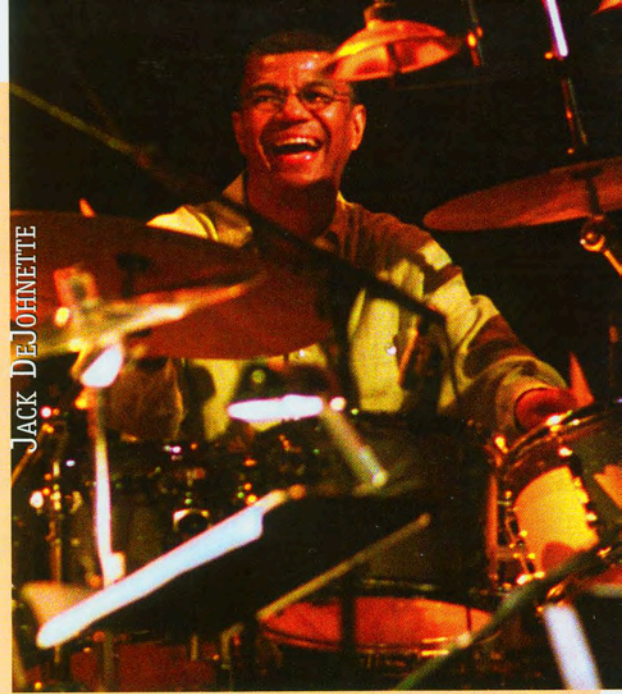


In cooperation with many professional drummers, Sonor has further developed the S Class Series to offer even better sound quality! The 5mm (bass drum 8mm), nine-ply full Maple shells are constructed with the CLTF (Cross Laminated Tension Free) Shell Compression System, allowing for a distinctive true maple sound.

Low Mass Fittings offer balanced sound volume with excellent sustain. Both the A.P.S. (Advanced Projection System) and the newly designed T.A.R. (Total Acoustic Resonance) tom holder system serve to fully preserve the drum's vibration energy.

All toms can be mounted at multi variable positions with the Ax Ball Clamp and set-up speed is increased considerably. Sonor's acclaimed prism clamps on bass drum spurs, tom and floor tom mounts and on tom holder brackets (T.A.R.) offer high dependability even under extreme playing conditions.

Newly available in this series are three additional finishes, a 13x5 Grained Maple Snare Drum with prism bracket, 400 Series Hardware and a Turbo Bass Drum with extended shell dimensions.





# FORCE 3003 DRUMS

## SPECIFICATIONS

**SHELL CONSTRUCTION:** Nine-Ply CLTF\* Maple-Basswood-Maple

\*Cross Laminated Tension Free

## SHELL SET CONFIGURATIONS

ITEM NO.	DESCRIPTION	PRICE
FSH 325	5-PC. Stage Drumset with 400 Series Hardware (22x17.5, 12x10, 13x11, 16x16, 14x5.5)	\$1399
FSH 315	5-PC. Fusion 1 Drumset with 400 Series Hardware (22x17.5, 10x9, 12x10, 14x12, 14x5.5)	1399
FSH 305	5-PC. Fusion 2 Drumset with 400 Series Hardware (20x17.5, 10x9, 12x10, 14x12, 14x5.5)	1399
JSH 4	4-PC. Jungle Kit with 400 Series Hardware (16x16, 10x9, 13x11, 10x2)	1299
JSH 3	3-PC. Jungle Shell Kit (16x16, 10x9, 13x11)	799



JSH 4 Jungle Kit

## COMPONENT DRUMS

### BASS DRUMS

ITEM NO.	DESCRIPTION	PRICE
F 3017B	20x17.5 Bass Drum	\$489
F 3217B	22x17.5 Bass Drum	489

### TOM TOMS

ITEM NO.	DESCRIPTION	PRICE
F 3008T	8x8 Tom Tom	\$149
F 3010T	10x9 Tom Tom	159
F 3012T	12x10 Tom Tom	169
F 3013T	13x11 Tom Tom	179
F 3014T	14x12 Tom Tom	189
F 3016T	16x14 Tom Tom	209

### FLOOR TOMS

ITEM NO.	DESCRIPTION	PRICE
F 3014FT	14x14 Floor Tom	\$269
F 3016FT	16x16 Floor Tom	279

### SNARE DRUMS

ITEM NO.	DESCRIPTION	PRICE
F 3145SW	14x5.5 Wood Snare	\$249
F 3145S	14x5.5 Metal Snare	199
F 3105SW-HM	10x5 Wood Snare	179
F 3112SW-HM	12x5 Wood Snare	189
JSD II 1002	10x2 Wood Snare w/Throw off	179

## T.A.R. TOTAL ACOUSTIC RESONANCE SYSTEM

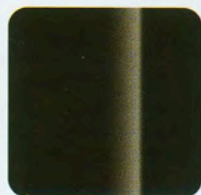


Now there are no more excuses for weak sounding drums — even at entry level prices! Total Acoustic Resonance (T.A.R.), Sonor's unique sound enhancement system, maximizes your drum sound by avoiding any intrusion into the shell interior. It is superior to conventional shell isolation mounts, since T.A.R. does not affect the sound sensitive tension rods. Where other

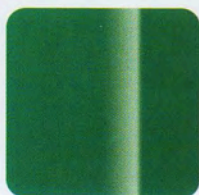
techniques require laborious unmounting of drum heads, T.A.R.'s patented lug connector system gives you independent mountings and swift and solid tom setups.

ITEM NO.	DESCRIPTION	PRICE
T.A.R 0813	8"-13" Force 2001 and 3001 Toms	\$39
T.A.R 1416	14"-16" Force 3001 Toms	39
T.A.R 14-6	14" Force 2001 Tom Only	39

## FINISHES: A FORCEFUL PRESENCE!



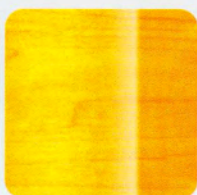
B Piano Black



CA Caribic



P Purple



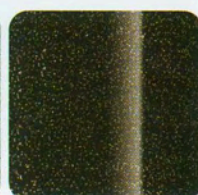
HM Honey Maple



RM Red Maple



WLS White Sparkle



BLS Black Sparkle



# THE NEW FORCE IN TOWN

*Force 1003, 2003 and 3003 drums are here to rock!*

Presenting the new edition of Sonor's most popular drum series. Force 3003 and 2003 drums feature exciting innovations, attractive new finishes, and — what is most remarkable — come with Sonor's unique T.A.R. (Total Acoustic Resonance) System as standard equipment.

## FORCE 3003

This high end range of the Force series features incredible sound volume and great looks. With new Black and White sparkle finishes, the T.A.R. System as standard equipment and a host of other innovations, Force 3003 drums represent a major step forward in Sonor's Force Series.



*FSH 325-BLS  
Black Sparkle*

## FORCE 3003 FEATURES:

- T.A.R. System for optimum shell resonance
- Pre-muffled REMO bass drum heads
- New 400 Series Hardware
- Turbo Bass Drums with extended shell dimensions
- Sonor Throw-Off Snare Action
- Multi Key — "one key for all"
- DT 211 Throne included



*FSH 325-WLS  
White Sparkle*



# FORCE 2003 DRUMS

## SPECIFICATIONS

**SHELL CONSTRUCTION:** Nine-Ply CLTF\* Maple-Basswood-Basswood \*Cross Laminated Tension Free

## SHELL SET CONFIGURATIONS

ITEM NO.	DESCRIPTION	PRICE
FSH 225	5-PC. Stage Drumset with 200 Series Hardware (22x17.5, 12x10, 13x11, 16x16, 14x5.5)	\$999
FSH 205	5-PC. Studio Drumset with 200 Series Hardware (20x17.5, 10x9, 12x10, 14x14, 14x.5)	999
FSH 215	5-PC. Fusion Drumset with 200 Series Hardware (22x17.5, 10x9, 12x10, 14x12, 14x.5)	999

## COMPONENT DRUMS

### BASS DRUMS

ITEM NO.	DESCRIPTION	PRICE
F 2017B	20x17.5 Bass Drum	\$279
F 2217B	22x17.5 Bass Drum	289

### TOM TOMS

ITEM NO.	DESCRIPTION	PRICE
F 2008T	8x8 Tom Tom	\$109
F 2010T	10x9 Tom Tom	119
F 2012T	12x10 Tom Tom	129
F 2013T	13x11 Tom Tom	139
F 2014T	14x12 Tom Tom	149

### FLOOR TOMS

ITEM NO.	DESCRIPTION	PRICE
F 2014FT	14x14 Floor Tom	\$189
F 2016FT	16x16 Floor Tom	199

### SNARE DRUMS

ITEM NO.	DESCRIPTION	PRICE
F 2145SW	14x5.5 Wood Snare	\$149
F 2145S	14x5.5 Steel Snare	119



FSH 205-WNA  
Wax Natural

## FORCE 2003 FEATURES:

- T.A.R. System for optimum shell resonance ■ Pre-muffled bass drum heads
- New 200 Series Hardware ■ Turbo Bass Drums with extended shell dimensions
- Sonor Throw-Off Snare Action ■ Multi Key — “one key for all”

## FINISHES: FORCE YOURSELF TO CHOOSE!



WMB Midnight Black

WSA Stain Amber

WDB Diamond Blue

WCR Cherry Red

WNA Wax Natural

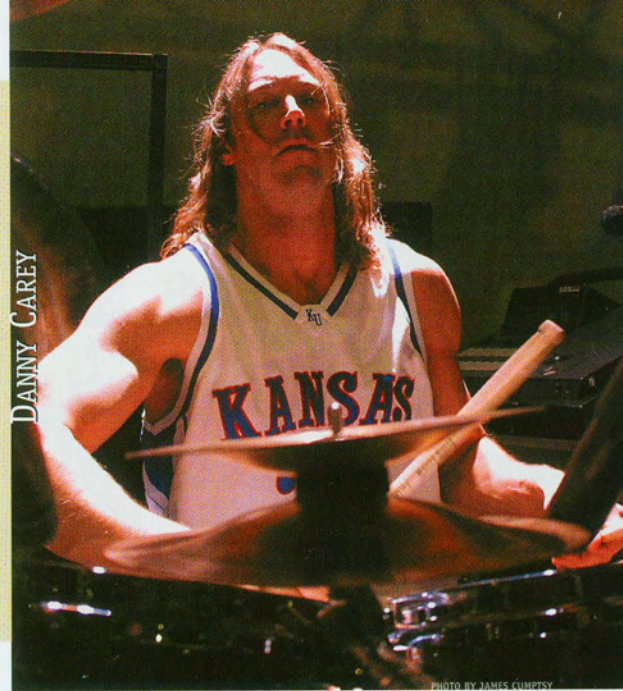


# FORCE 2003

The updated edition of one of Sonor's most popular drum series makes Force 2003 drums more attractive than ever! Each kit ships standard with the T.A.R. System, Turbo Bass Drum shells and pre-muffled bass drum heads. Sounds great "right out of the box!" Explore all the new features and find the perfect kit for your individual demands.

# FORCE 1003

Now anyone can afford the impeccable Sonor sound! Offering Sonor quality at an unbeatable price, this series is without equal in its class. New features include a pre-muffled bass drum head and new 200 Series hardware.



## FORCE 1003 DRUMS SPECIFICATIONS

**SHELL CONSTRUCTION:** Nine-Ply CLTF\* Basswood  
*\*Cross Laminated Tension Free*

## SHELL SET CONFIGURATIONS

ITEM NO.	DESCRIPTION	PRICE
FSH 105	5-PC. Studio Drumset with 200 Series Hardware (20x16, 10x9, 12x10, 14x14, 14x.5)	\$799
FSH 125	5-PC. Stage Drumset with 200 Series Hardware (22x16, 12x10, 13x11, 16x16, 14x5.5)	799

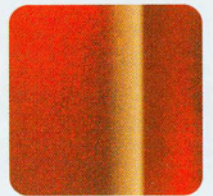
## FORCE 1003 FEATURES:

- Pre-muffled bass drum head
- New 200 Series Hardware
- Multi Key — "one key for all"

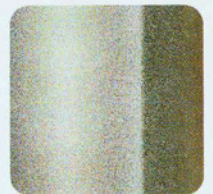


FSH 125-CWR  
Wine Red

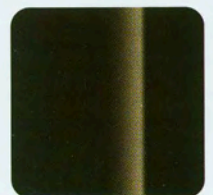
## FINISHES WITH FORCE!



CWR Wine Red



CRS Reflex Silver



CBB Black

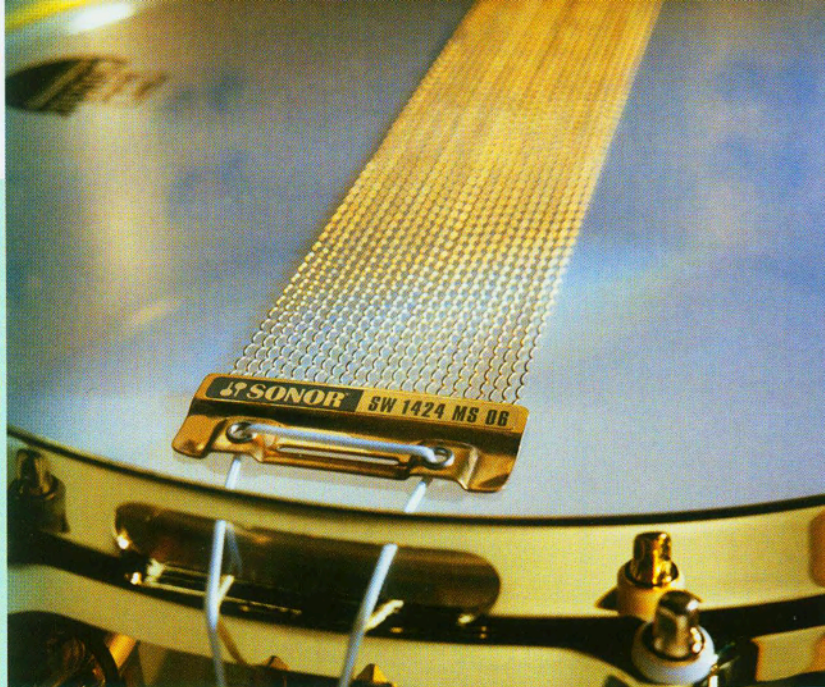


# SNARE WIRES

## SOUNDWIRE YOUR SNARE AND DISCOVER WHAT YOUR DRUM CAN BE

SoundWire is Sonor's answer to all drum enthusiasts looking for new ways to enhance their snare drum sound. With 3 different materials — steel, brass and bronze — 24 variations of snare wires and the option of string or strap mount, the SoundWire program offers a wide variety of choices. Each SoundWire set of snare wires comes in an attractive wooden box that ensures best protection.

Sonor SoundWire feature specially designed end plates that ensure perfect snares-to-head contact. Round shaped edges of the plates prevent the heads from being damaged when tightening the snares.



## SOUNDWIRE SNARE WIRES

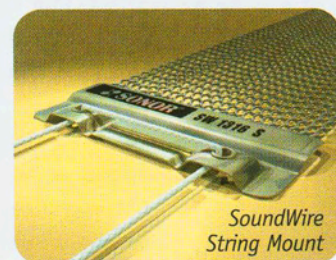
ITEM NO.	DESCRIPTION	PRICE
<b>STEEL</b>		
SW 1018S	10" 18 Wire Steel	\$49
SW 1218S	12" 18 Wire Steel	49
SW 1318S	13" 18 Wire Steel	49
SW 1418S	14" 18 Wire Steel	59
SW 1424S	14" 24 Wire Steel	59
SW 1316/2S	13" Two sets of 8 Wire Steel	59
SW 1416/2S	14" Two sets of 8 Wire Steel	59
<b>BRONZE</b>		
SW 1018B	10" 18 Wire Bronze	\$49
SW 1218B	12" 18 Wire Bronze	49
SW 1318B	13" 18 Wire Bronze	49
SW 1418B	14" 18 Wire Bronze	59
SW 1424B	14" 24 Wire Bronze	59
SW 1316/2B	13" Two sets of 8 Wire Bronze	59
SW 1416/2B	14" Two sets of 8 Wire Bronze	59
<b>BRASS</b>		
SW 1318MS5	13" 18 Wire Brass .5mm	\$49
SW 1318MS6	13" 18 Wire Brass .6mm	49
SW 1418MS5	14" 18 Wire Brass .5mm	59
SW 1418MS6	14" 18 Wire Brass .6mm	59
SW 1424MS5	14" 24 Wire Brass .5mm	59
SW 1424MS6	14" 24 Wire Brass .6mm	59
SW 1316/2MS	13" Two sets of 8 Wire Brass .5mm	59
SW 1416/2MS	14" Two sets of 8 Wire Brass .5mm	59



SoundWire Packaging



SoundWire Strap Mount



SoundWire String Mount



# HARDWARE COMPONENTS

## 600 SERIES HARDWARE

The new premium class in hardware! Everything you expect in functionality, reliability and design. Solidly built with a range of innovations that allow for even the most individual setups.



ITEM NO.	DESCRIPTION	PRICE
SS 657	Snare Drum Stand	\$179
HH 654	Hi-Hat Stand	279
MBS 652	Mini Boom/Cymbal Stand	199
CTS 659-4	Cymbal Tom Stand	229
DTS 655-4	Double Tom Stand	219
XH 644	X-HAT w/MC 626 Multi Clamp	119
P 693	Bass Drum Pedal	249
<b>NEW!</b> DP 692	Double Bass Drum Pedal	699
DCS 658	Double Boom/Cymbal Stand	259
GSDS	Bass Pedal Docking Station	49
MBA 651	Mini Boom Arm	79
CTS 659 AX-4	Cymbal Tom Stand for H-Bar system (Designer)	229
CTS 659 AX-6	Cymbal Tom Stand for T.A.R. system (Delite/S Class)	229
DTS 655 AX-4	Double Tom Stand for H-Bar system (Designer)	219
DTS 655 AX-6	Double Tom Stand for T.A.R. system (Delite/S Class)	219
DTH 613 AX-4	Double Tom Holder (Designer)	199
DTH 613 AX-6	Double Tom Holder (Delite/S Class)	199
STH 611 AX-4	Single Tom Holder (Designer)	99
STH 611 AX-6	Single Tom Holder (Delite/S Class)	99
TA 628 AX-4	Tom Arm (Designer)	69
TA 628 AX-6	Tom Arm (Delite/S Class)	69
RTA 629 AX-4	Rack Tom Arm (Designer)	89
RTA 629 AX-6	Rack Tom Arm (Delite/S Class)	89
<b>NEW!</b> DT 610	Drummer Seat (Round)	229
<b>NEW!</b> DT 620	Drummer Seat (Saddle)	249

## 400 SERIES HARDWARE

The 400 Series offers everything for the pro player. Wide dimension tubes, solid double struts and the innovative clamp design make it second to none in its price range. A pre-configured hardware set comprises everything you need to equip your Sonor set or upgrade your set to Sonor quality.



ITEM NO.	DESCRIPTION	PRICE
P 433	Bass Drum Pedal	\$ 79
DP 492	Double Bass Drum Pedal	299
<b>NEW!</b> DP 492 SL	Left Double Bass Drum Pedal	299
HH 444	Hi-Hat Stand	119
SS 457	Snare Drum Stand	89
CS 440	Cymbal Stand	89
CBS 442	Cymbal Boom Stand	109
MBS 443	Mini Boom Cymbal Stand	99
DTS 445	Double Tom Stand	119
CTS 449	Cymbal/Tom Stand	129
DCS 448	Double Cymbal Stand	139
MBA 441	Mini Boom Arm	29
MC 226	Multi-Clamp	29
MC 326	Adjustable Multi-Clamp	39
TA 328	Tom Arm (Force Series)	39
DTH 313	Double Tom Holder (Force Series)	109
HS 400	400 Series Hardware Set	429
DT 410	400 Series Throne	99

## 200 SERIES HARDWARE

The perfect series for drummers looking for a lightweight hardware range with Sonor quality. Available as single components or as a pre-configured complete set.



ITEM NO.	DESCRIPTION	PRICE
P 233	Bass Drum Pedal	\$ 69
HH 224	Hi-Hat Stand	99
SS 227	Snare Drum Stand	69
CS 220	Cymbal Stand	69
MBS 223	Mini Boom Stand	79
HS 200	200 Series Hardware Set	329
DT 211	200 Series Throne	79



# HARDWARE COMPONENTS & ACCESSORIES

## 1000 SERIES HARDWARE

The most affordable series of hardware offered by Sonor. Available as single components or as a pre-configured complete set.



ITEM NO.	DESCRIPTION	PRICE
FZ 1057	Snare Drum Stand [6]	69
FZ 1054	Hi-Hat Stand [4]	89
FZ 1050	Cymbal Stand [6]	69
FZ 1051	Mini Boom Cymbal Stand [6]	69
FZ 1052	Cymbal Boom Stand [4]	79
FZ 1093	Bass Drum Pedal [10]	69

— Numbers in [ ] denote Master Pack quantities —



Multi Key

## HARDWARE ACCESSORIES

### TOM HOLDERS & TOM ARMS

ITEM NO.	DESCRIPTION	PRICE
STH 3211AX	Single Tom Holder (Delite)	109
DTH 3213AX	Double Tom Holder (Delite)	189
DTH 313	Tom Holder (Force 3001)	129
DTH 213N	Tom Holder (Force 2001)	129
TA 3159AX	Tom Arm (Delite)	69
TA 328	Tom Arm (Force 3001)	49
DTH 553	Double Tom Holder	349
STH 553	Single Tom Holder	299
DTA	Tom Arm (Designer)	59
DTAX	Tom Arm (Designer)	99
DT-08	Tom Arm (Designer)	89
DTAR-1	Tom Arm (Designer)	69
FC-25	3 Pc. Memory Clamp Set	29

### CLAMPS

PH	Prism Clamp	\$ 49
7238-645A	Memory Clamp (Force 2001)	9
MC 26	Multi-Clamp	29
Z 5540B	5-Way Adapter	279

### CYMBAL ARMS

CA-1	Cymbal Arm (Designer)	\$229
Z 5274	Cymbal Arm (Designer)	189
Z 5076	Mini Boom Extension	59
MBA441	Mini Boom Arm	29

### LOGO DRUM HEADS

ITEM NO.	DESCRIPTION	PRICE
BD18RALG	Sonor Bass Logo Head 18"	69
BD20RALG	Sonor Bass Logo Head 20"	69
BD22RALG	Sonor Bass Logo Head 22"	69
BD24RALG	Sonor Bass Logo Head 24"	69



THOMAS HAAKE

## DRUM CARE ACCESSORIES

Z 5215	Cymbal Clamp (Set of 6 Pcs.)	\$49
Z 5215E	Cymbal Clamp	9
Z 5205	Super-Lock Tension Rod Locks	29
Z 9200	Emergency Kit	9
Z 9210	Drum Care Kit	49



Cymbal Clamp

## BASS DRUM BEATERS

SCH 20	Felt Beater	\$29
SCH 21	Wool Leather Beater	39
SCH 24	Wood Beater	29
SCH 26	Quick Beater	29
SCH 27	4 Surface Beater	39



Super-Lock Tension Rod Locks

## DRUM KEYS

Z 5070	Spin Drum Key	\$9
Z 5071	Drum Key, Long	9
Z 5072	Drum Key, Short	3
MK	Multi Key	9

## DRUM THRONES

ITEM NO.	DESCRIPTION	PRICE
Z 5801	Sonor Hi-Tech Cloth Throne	\$249
Z 5802	Sonor Hi-Tech Saddle Throne	299
DT 211	200 Series Throne	79
DT 410	400 Series Throne	99
NEW! DT 610	600 Series Round Throne	229
NEW! DT 620	600 Series Saddle Throne	249
FZ1015	1000 Series Throne	119



Emergency Kit



Drum Care Kit



Spin Drum Key



Long Drum Key



Short Drum Key



FZ 1015



DT 410



DT 211



Z 5802



Z 5801



# THE REVIVAL OF AUTHENTIC SOUND TRADITIONS

Sonor's new percussion range reintroduces you to the magic of original African and Latin instruments. Keeping the traditional principles of drum making alive Sonor has taken the authentic forms and styles and combined them with contemporary design features. This melding of new and old opens a new world of fascinating sounds, rhythms and designs.



## CUBANO BONGOS & CONGAS TIMBALES



### CUBANO FIBERGLASS BONGOS

- Lightweight fiberglass shells in 7" and 8½"
- Extra-strong water buffalo skins for excellent tone and sound projection
- Comfortable playing feel through low mounted traditional rim
- Bongo stand available

CFB 7850 W Fiberglass Bongos 7" + 8½", White \$189.95



### SINGLE TIMBALES

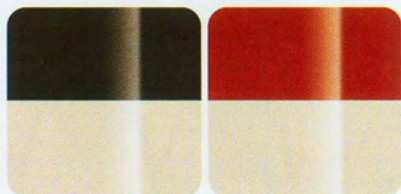
<b>NEW!</b> TIM 8	8" x 8" Timbales	\$109.95
<b>NEW!</b> TIM 10	10" x 8" Timbales	\$119.95
<b>NEW!</b> TIM 12	12" x 8" Timbales	\$129.95
<b>NEW!</b> TIM 13	13" x 8" Timbales	\$139.95
<b>NEW!</b> TIM 14	14" x 8" Timbales	\$149.95
<b>NEW!</b> TIM 15	15" x 8" Timbales	\$159.95

### CUBANO FIBERGLASS CONGAS

- Lightweight fiberglass shell available in 10" and 11"
- Extra-strong water buffalo skins for excellent tone and sound projection
- Comfortable playing feel through low mounted traditional rim
- Two-color design available in Red/White or Soft Black/White
- Special conga stand available



CFC11RW	Cubano Conga 11"	\$249.95
CFC1175RW	Cubano Conga 11¾"	\$269.95
<b>NEW!</b> CFC1250RW	Cubano Conga 12½"	\$299.95
CFC11BW	Cubano Conga 11"	\$249.95
CFC1175BW	Cubano Conga 11¾"	\$269.95
<b>NEW!</b> CFC1250BW	Cubano Conga 12½"	\$299.95



BW Soft Black/White

RW Red/White



## GUIRO SHEKERE SHAKERS



### SHEKERE

The Shekere is a traditional African instrument which is also popular in Caribbean music. The Sonor Shekere is made of fiberglass with adjustable tension beads.

<b>IMPROVED!</b>	FSB	Shekere, Fiberglass, Brown	\$139.95
<b>IMPROVED!</b>	FSN	Shekere, Fiberglass, Natural	\$139.95

### GUIRO

Originally made of the calabash fruit, Sonor offers two fiberglass models which are very comfortable to play and have great sound projection.

FGLB	Guiro, Fiberglass, Large, Brown	\$47.95
FGLN	Guiro, Fiberglass, Large, Natural	\$47.95

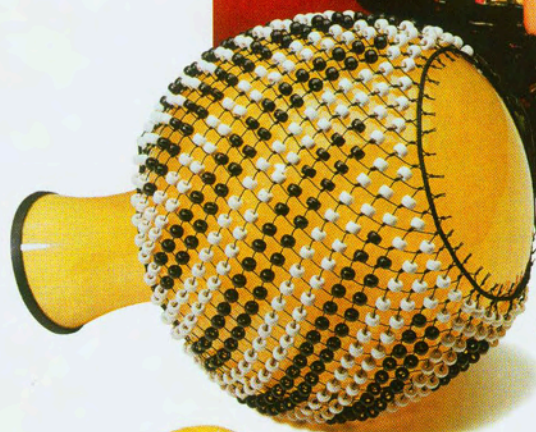
### SHAKERS

Caxixis are Shakers made of small, woven baskets in different sizes for a variety of rhythmical accents. Metal Shakers have a more cutting sound due to their metal construction.

LCX-S	Caxixi, Small, Natural	\$11.95
LCX-M	Caxixi, Medium, Natural	\$13.95
LCX-L	Caxixi, Large, Natural	\$15.95
LTC-S	Tube Caxixi, Small, Natural	\$14.95
LTC-L	Tube Caxixi, Large, Natural	\$16.95
LADS	African Double Shaker, Natural	\$27.95
LSMS-M	Square Metal Shaker, Medium	\$24.95
LSMS-L	Square Metal Shaker, Large	\$29.95
LRMS-S	Round Metal Shaker, Small	\$18.95
LRMS-M	Round Metal Shaker, Medium	\$24.95
LRMS-L	Round Metal Shaker, Large	\$29.95

### ACCESSORIES

LS11	Single Stand, fits 11" Conga, height adjustable	\$39.95
LS1112	Single Stand, fits 11 $\frac{3}{4}$ " + 12 $\frac{1}{2}$ " Congas, height adjustable	\$44.95
SCS10	Street Conga Stand, fits 10" Conga	\$34.95
SCS11	Street Conga Stand, fits 11" Conga	\$39.95
<b>NEW!</b>	CDST Quick Release Double Conga Stand, Chrome	\$119.95
LBS	Bongo Stand, Chrome	\$104.95
GBST	Bongo Stand, Black/Chrome	\$74.95
<b>NEW!</b>	BST L Sit Down Bongo Stand	\$74.95
<b>NEW!</b>	PRS Percussion Rack System	\$79.95
<b>NEW!</b>	MPS Multi-Percussion Stand	\$129.95
SSC	Carrying Strap for Street Conga	\$9.95



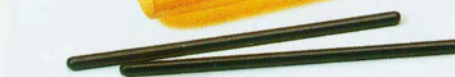
Shekere



Guiros



African Double Shaker



Tube Caxixis



Caxixis



Square Metal Shakers



Round Metal Shakers





# SONOR WEAR

ITEM NO.	DESCRIPTION	PRICE
Z 9195	PIQUE CAMP SHIRT	\$54.95

*Sonor logo embroidered in silver on left chest*  
 Fabric: 100% Combed Cotton Pique  
 Color: Black  
 Sizes: M, L, XL, XXL, XXXL

Z 9440	SPORTSHIRT	39.95
--------	------------	-------

*Sonor logo embroidered in silver on left chest*  
 Fabric: 65% Cotton, 35% Polyester  
 Color: Black/Graphite  
 Sizes: M, L, XL, XXL

Z 9600	BASEBALL CAP	14.95
--------	--------------	-------

*Sonor logo embroidered in silver, tuck away leather strap w/antique brass buckle*  
 Fabric: 100% Brushed Cotton Twill  
 Color: Black  
 Sizes: One Size Fits All

Z 9118	MICROFIBER JACKET	99.95
--------	-------------------	-------

*Sonor logo embroidered in khaki on left chest*  
 Fabric: 100% Polyester Microfiber  
 Color: Black/Khaki  
 Sizes: L, XL

Z 9848	FLEECE PULLOVER	79.95
--------	-----------------	-------

*Sonor logo embroidered in silver on left chest*  
 Fabric: 100% Polyester  
 Color: Black  
 Sizes: M, L, XL, XXL

Z 1969BK	PIGMENT DYED T-SHIRT	19.95
----------	----------------------	-------

*Sonor logo embroidered in silver on left chest*  
 Fabric: 100% Cotton  
 Color: Charcoal  
 Sizes: M, L, XL, XXL

Z 1969BL	PIGMENT DYED T-SHIRT	19.95
----------	----------------------	-------

*Sonor logo embroidered in silver on left chest*  
 Fabric: 100% Cotton  
 Color: Blue  
 Sizes: M, L, XL, XXL

Z 9301	ANNIVERSARY T-SHIRT	14.95
--------	---------------------	-------

*Sonor 125th logo silkscreened in white on left chest*  
 Fabric: 100% Cotton  
 Color: Black  
 Sizes: L, XL, XXL, XXXL





# NEW PRODUCTS 2004



400 Series  
Double Pedal LEFT



8"  
African  
Kpanlogo

Improved  
Shekere



600  
Series  
Double  
Pedal



8"-15"  
Single  
Timbales



Improved  
Claves



Improved Global  
Wood Bongos



Extra-Low  
Sit-Down  
Bongo Stand



Improved  
Global Wood  
Congas



Exclusive  
Multi-Percussion  
Stand

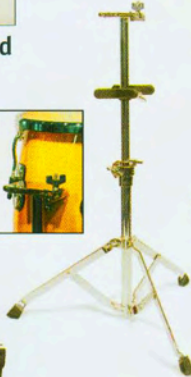
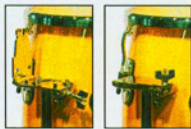


Fiberglass  
& Bamboo  
Composite  
Jam Tubes



Jam Tube  
Holders

Innovative  
Flip Lock  
Double  
Conga Stand



Percussion  
Rack  
System



12 1/2"  
Cubano  
Tumbadoras

ITEM NO.	DESCRIPTION	PRICE
AK 8 BW	8" African Kpanlogo	\$199.95
CDST	Double Conga Stand	\$119.95
BST L	Sit Down Bongo Stand	\$74.95
PRS	Percussion Rack System	\$79.95
MPS	Multi Percussion Stand	\$129.95
CFC 1250 RW	Cubano Tumbadora 12 1/2"	\$299.95
CFC 1250 BW	Cubano Tumbadora 12 1/2"	\$299.95
DT 610	600 Series Round Throne	\$229.00
DT 620	600 Series Saddle Throne	\$249.00
LC 10 NA	Latino Requinto Natural Amber	\$329.00
LC 10 C	Latino Requinto Cherry	\$329.00
LC 10 WS	Latino Requinto White Sparkle	\$359.00
GCW 10 S	Global 10" Requinto Natural Includes single stand (Replaces GC10N)	\$229.95
GCW 11 S	Global 11" Quinto Natural Includes single stand (Replaces GC11N)	\$249.95
GCW 12 S	Global 12" Conga Natural Includes single stand (Replaces GC12N)	\$269.95
GBW 7850	Global Bongos 7" & 8 1/2" Natural (Replaces GB7850N)	\$109.95
TIM 8	8" x 8" Timbales w/Prism Clamp	\$109.95
TIM 10	10" x 8" Timbales w/Prism Clamp	\$119.95
TIM 12	12" x 8" Timbales w/Prism Clamp	\$129.95
TIM 13	13" x 8" Timbales w/Prism Clamp	\$139.95
TIM 14	14" x 8" Timbales w/Prism Clamp	\$149.95
TIM 15	15" x 8" Timbales w/Prism Clamp	\$159.95
DP 492 SL	400 Series Left Double Pedal Includes Pedal Bag	\$299.00
DP 692	600 Series Double Pedal Includes Pedal Bag	\$699.00
FSN	Fiberglass Shekere Natural	\$139.95
FSB	Fiberglass Shekere Soft Black	\$139.95
CLA	Claves	\$11.95
CBB	Cowbell Beater	\$3.99
JT 20	Jam Tube 20 cm	\$34.95
JT 25	Jam Tube 25 cm	\$39.95
JT 35	Jam Tube 35 cm	\$44.95
JT 40	Jam Tube 40 cm	\$49.95
JTHL	Jam Tube Holder Large (For JT35, JT40)	\$29.95
JTHS	Jam Tube Holder Small (For JT 20, JT 25)	\$24.95



 SONOR®

DRUMS

PERCUSSION

ACCESSORIES

distributed by **HSS**



**east coast**

1000 Technology Park Dr., Glen Allen, VA 23059  
PHONE: (804) 515-1900 • FAX: (804) 515-0347

**west coast**

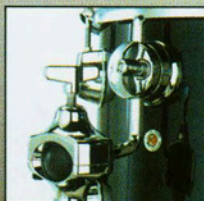
3321 Industrial Dr., Santa Rosa, CA 95403  
PHONE: (707) 526-0396 • FAX: (707) 526-0399

[www.hohnerusa.com/percussion](http://www.hohnerusa.com/percussion) • [www.sonor.com](http://www.sonor.com)

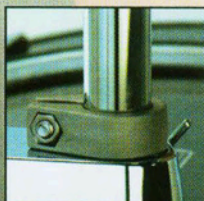


# 503 SERIES

The 503 Series offers incredible technical features and sound at an even more incredible value! Now available at your local Sonor dealer.



Versatile Sonor ball clamp tom mounting system



Fast and secure memory lock adjustments



Swing away bass drum spurs convert from rubber to metal



Giant Step designed footboards for pedals and hi hat

#### Setup 1 - SH 505 Studio Set

20" x 16" Bass Drum, 14" x 5 1/2" Snare Drum  
10" x 9" Tom Tom, 12" x 10" Tom Tom  
14" x 14" Floor Tom, 4 pc. Hardware Set

#### Setup 2 - SH 525 Stage Set

22" x 16" Bass Drum, 14" x 5 1/2" Snare Drum  
12" x 10" Tom Tom, 13" x 11" Tom Tom  
16" x 16" Floor Tom, 4 pc. Hardware Set

Available in Black (CBB) & Wine Red (WR).  
Cymbals & MBS 53 Boom sold separately.

**List Price**  
**\$599**



# THE NEXT GIANT STEP IN PEDAL TECHNOLOGY

**A**claimed by major drum magazines as THE innovation in drum pedal design and DRUM! Magazine's "Hardware Product of The Year," Sonor's Giant Step has taken yet another leap! The latest addition is the Giant Step Middle Pedal — not to be confused with conventional double pedals, it allows for more flexible drum setups and improves positioning of pedals and drums as well as playing technique.

*"Apart from being smooth and fast like all the other Giant Step pedals, finally a pedal that allows the kick drum to be placed in the center of my drum kit. Now I can acoustically hear the kickdrum right from the center of my kit when I play, just like it is meant to be in the stereo panorama of any recording. It feels so much more natural and direct from this position. It also eliminates the problem of right and left double bass drum pedals, it is both! In addition to that, it enables me to set my kit up perfectly symmetrical and my feet can be seen from the audience while I play, it looks and feels amazing!"*

— THOMAS LANG



THOMAS LANG

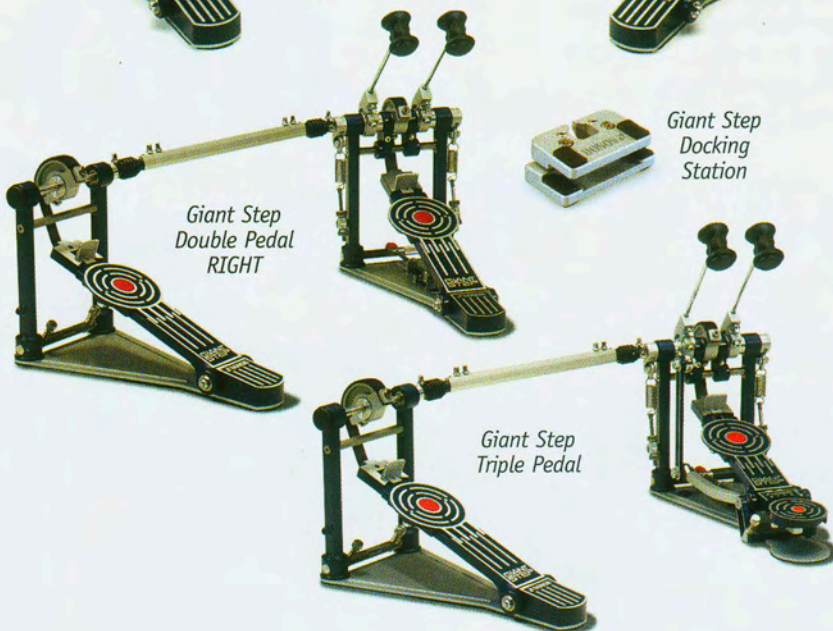


Giant Step  
Middle  
Pedal



Giant Step  
Single Pedal

Giant Step  
Twin Effect Pedal



Giant Step  
Double Pedal  
RIGHT

Giant Step  
Docking  
Station

Giant Step  
Triple Pedal

## GIANT STEP PEDALS

ITEM NO.	DESCRIPTION	PRICE
GSP	Giant Step Single Pedal	\$ 349
GTEP	Giant Step Twin Effect Pedal	629
GDPR	Giant Step Double Pedal RIGHT	829
GDPL	Giant Step Double Pedal LEFT	829
GMP	Giant Step Middle Pedal	1199
GTRP	Giant Step Triple Pedal	899
GSR	Giant Step Tension Spring	19
GSC	Giant Step Silent Chain	19
GSSP	Giant Step Silent Strap	19
GSDS	Giant Step Docking Station	49



# SNARE DRUMS

**ITEM NO.**      **DESCRIPTION**      **PRICE**

## SYMPHONY

SY 145MS	14x5 Brass Shell	\$799
SY 146MS	14x6 Brass Shell	849

## ARTIST SERIES

AS 1205 AD	12X5, Birch, Color: Art Design	\$ 849
AS 1305 EA	13X5, Beech, Color: Earth	1049
AS 1405 BLR	14X5, Vintage Maple Shell, Color: Blanched-Roots	1149
AS 1406 CM	14X6, Maple Light Color: Cottonwood-Matte	949
AS 1405 MS	14x5, Brass	1049
AS 1405 ST	14x5, Steel/Coated	1049
AS 1406 BR	14x6, Bronze	1999

## DESIGNER

DSS 1005ML	10x5 Wood Snare	\$ 899
DSS 1205ML	12x5 Wood Snare	949
DSS 1404ML	14x4 Wood Snare	1049
DSS 1405ML	14x5 Wood Snare	1099
DSS 1406ML	14x6.5 Wood Snare	1149
DSS 1408ML	14x8 Wood Snare	1199

## DELITE

D 1404M	14x4 Maple Snare w/Die-Cast Rims	\$899
D 1405M	14x5 Maple Snare w/Die-Cast Rims	899
D 1406M	14x6 Maple Snare w/Die-Cast Rims	899

## S CLASS

S 1405M	14x5 Maple Snare	\$499
S 1405MDC	14x5 Maple Snare w/Die-Cast Rims	649
S 1405B	14x5 Brass Snare w/Die-Cast Rims	679
S 1405S	14x5 Steel Snare	549
S 1305P-GM	13x5 Soprano Snare w/Prism Bracket	479

## FORCE

F 3145SW	14x5.5 Wood Snare	\$249
F 3145S	14x5.5 Metal Snare	199
F 3105SW-HM	10x5 Wood Snare	179
F 3112SW-HM	12x5 Wood Snare	189
JSD II 1002	10x2 Wood Snare w/Throw off	179
F 2145SW	14x5.5 Wood Snare	149
F 2145S	14x5.5 Steel Snare	119



AS 1205 AD



AS 1405 BLR



AS 1406 CM



AS 1405 MS



AS 1405 ST



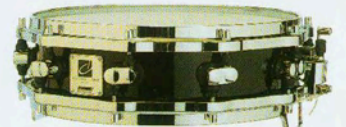
AS 1405 BR



SY 145MS



SY 146MS



DSS 1404ML-SBK



JSD II 1002



F 3105SW-HM



F 2145S

AS 1305 EA





# NEW VOICES IN percussion

## AFRICAN KPANLOGO

## DJEMBE

## STREET CONGA

### AFRICAN KPANLOGO

- Available in 10" and 11" based upon original shapes
- Conga style design and mounts for maximum playing comfort
- Original water buffalo skins offer authentic sound character
- Art Deco design (African motifs based upon cave paintings)

<b>NEW!</b> AK8BW	African Kpanlogo 8", Deer design, Black/White	\$199.95
AK10BW	African Kpanlogo 10", Bird design, Black/White	\$279.95
AK11BW	African Kpanlogo 11", Giraffe design, Black/White	\$304.95



### DJEMBE

The Sonor Djembe has the same light weight hardware as the African Kpanlogo which makes it perfect for playing while standing. The design features motifs adapted from the Kpanlogo.

D 13	Djembe 13", Bird design, Black/White	\$449.95
------	--------------------------------------	----------



### STREET CONGA

- Lightweight fiberglass shell in 10" and 11" sizes
- Original water buffalo skins offer authentic sound character
- Equipped with hook for carrying strap
- Soundholes on bottom of shell for best sound projection when placed on floor
- Height adjustable stands available

SC10RW	Street Conga 10" Fiberglass, Red/White	\$169.95
SC10BW	Street Conga 10" Fiberglass, Black/White	\$169.95
SC11RW	Street Conga 11" Fiberglass, Red/White	\$179.95
SC11BW	Street Conga 11" Fiberglass, Black/White	\$179.95



SSC Strap Sold Separately



BW Soft Black/White



RW Red/White



# NEW VOICES IN percussion

## LATINO CONGAS & BONGOS

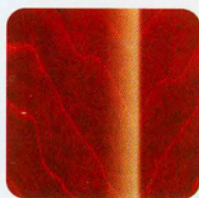
## GLOBAL PERCUSSION



### LATINO CONGAS & BONGOS

The Sonor Latino Series comprises congas and bongos in a variety of sizes and color finishes. All instruments offer excellent sound character, balanced tone and quality craftsmanship. Select natural skins and special low mounted rims allow for high playing comfort and great projection. All Latino Congas come equipped with the LDCS Chrome Double Conga Stand Mount.

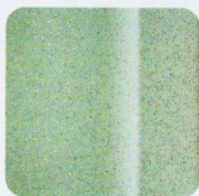
<b>NEW!</b> LC10WS	Conga 10", White Sparkle	\$359.95
LC11WS	Conga 11", White Sparkle	\$399.95
LC1175WS	Conga 11¾", White Sparkle	\$439.95
LC1250WS	Conga 12½", White Sparkle	\$469.95
<b>NEW!</b> LC10NA	Conga 10", Natural Amber	\$329.95
<b>NEW!</b> LC10C	Conga 10", Cherry	\$329.95
LC11NA	Conga 11", Natural Amber	\$369.95
LC11C	Conga 11", Cherry	\$369.95
LC1175NA	Conga 11¾", Natural Amber	\$409.95
LC 1175 C	Conga 11¾", Cherry	\$409.95
LC 1250 NA	Conga 12½", Natural Amber	\$439.95
LC 1250 C	Conga 12½", Cherry	\$439.95
LB7850WS	Bongos 7" + 8½", White Sparkle	\$229.95
LB7850NA	Bongos 7" + 8½", Natural Amber	\$189.95
LB7850C	Bongos 7" + 8½", Cherry	\$189.95



C Cherry



NA Natural Amber



WS White Sparkle



N Natural

### GLOBAL SERIES

The Sonor Global Series offers a perfect start into the world of percussion. With quality at affordable prices these instruments have great sound and professional looks.

<b>IMPROVED!</b> GCW10S	Conga 10", Natural Black hardware, with stand	\$229.95
<b>IMPROVED!</b> GCW11S	Conga 11", Natural Black hardware, with stand	\$249.95
<b>IMPROVED!</b> GCW12S	Conga 12", Natural Black hardware, with stand	\$269.95
<b>IMPROVED!</b> GBW7850	Bongos 7" + 8½" Natural, black hardware	\$109.95
GCD8N	Circle Drum 8", Natural Black hardware, with strap	\$169.95
GCD10N	Circle Drum 10", Natural Black hardware, with strap	\$189.95
GCD12N	Circle Drum 12", Natural Black hardware, with strap	\$209.95

