

# fibes



Fibes Drums.  
History Worth Repeating.



# fibes



## SNARE DRUMS

With Fibes Snare Drums the choice is yours. Fiberglass, Crystalite (Acrylic), and Maple. All shells are available in 13 and 14 inch diameters and a variety of depths.

The SFT snare strainer, a design exclusive to Fibes, has no internal springs or cams to release the snares, so constant snare tension and total reliability are achieved. Full dynamic range with articulation, and power.

## TOM TOMS

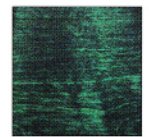
The Tom Toms, and Floor Toms are offered in both conventional and power sizes. Choose between RIMS™ mounts, or use any brand tom tom holder system that you prefer. With precise sound edges, these drums have a warm and rich tone, with outstanding attack and projection. Available from 6 to 18 inches.

## BASS DRUMS

Fibes Bass Drums have an incredible low tone. The spring loaded Fibes "floating" spurs (another exclusive Fibes design innovation) do not penetrate the shell, thereby maintaining the integrity of the drum and ensuring the maximum warm full bodied sound. Bass drums are available from 18 to 26 inches in conventional and power sizes.



Amber



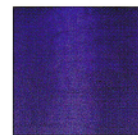
Emerald Green



Mahogany



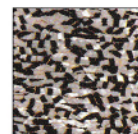
Maple



Sapphire Blue



Ruby Red



Black & White Crunch



Turquoise Sparkle



Champagne Sparkle



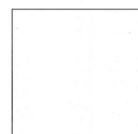
White Marine Pearl



Onyx



Silver Sparkle



Piano White



Piano Black

## Fibes Drum Company

701 South Lamar Blvd.

Austin, Texas 78704

tel. 512/416-9955

fax 512/416-9956

internet- FibesCo@ix.netcom.com