



120th
Anniversary
Issue
2003-2004



History of Gretsch Drums



We are extremely proud that the Gretsch name has adorned drums for 120 years through five generations of ownership by my family. Gretsch is the oldest U.S.-made drum brand name; is highly sought-after by drum aficionados and collectors; has a history of innovation and firsts that are found on most drums today; and has been used by some of most prominent drummers in the world during the 20th, and now 21st Century. It is a name that conjures up images of smoky jazz clubs, swing dance halls, recording sessions everywhere and brand like Gretsch. No other company makes drums like we do. No other drums sound like Gretsch Drums. Try a Gretsch drum set and find out why so many drummers around the world hold a special place in their heart for Gretsch. Why our motto, "That Great Gretsch Sound," rings so true.

My family and our family of employees invite you to discover what five generations and 120 years of drum manufacturing expertise has taught us: you don't inherit a reputation, you live up to it. So, please join us in our celebration of Gretsch manufacturing from 1883 to 2003, become one of the members of the exclusive family of Gretsch Drum owners around the world.

Sincerely,
Fred Gretsch



Fred & Dinah Gretsch
at the Gretsch
120th Anniversary
Celebration, 2003

Friedrich Gretsch immigrated to the USA from Germany in 1872 and set up his musical instrument business in 1883. Friedrich died young and his son Fred Gretsch Sr., still a teenager, took over in the 1890's. Fred Gretsch Sr. built up the Fred Gretsch Company in Brooklyn, New York, supplying drums and other musical items throughout the world. By 1916 the Gretsch Company had outgrown its factory, and re-located to a new, larger building in Brooklyn. Fred Gretsch Jr. took over the reins of Fred Gretsch Manufacturing Company in 1942, but shortly afterwards left to serve with distinction as Navy Commander in the Pacific during World War II. At that point, his younger brother, Bill Gretsch, took over as President of Gretsch and continued the company's leadership in drum manufacturing and innovation. In 1985, Bill Gretsch's son, Fred Gretsch, became President of the Gretsch Company, and along with his wife Dinah, oversees the company today. Gretsch Drums are now manufactured in Ridgeland, South Carolina, after the factory's re-location there in 1986.



Friedrich Gretsch



Fred Gretsch, Sr.

The Gretsch Company was responsible for many groundbreaking drum manufacturing techniques and technical innovations that have become the standard of modern-day drums. Just consider what drums would be like today without:

- The multi-ply drum shell
- Lacquer (wood grain) finishes
- Die-cast hoops
- Smaller-sized bass drums



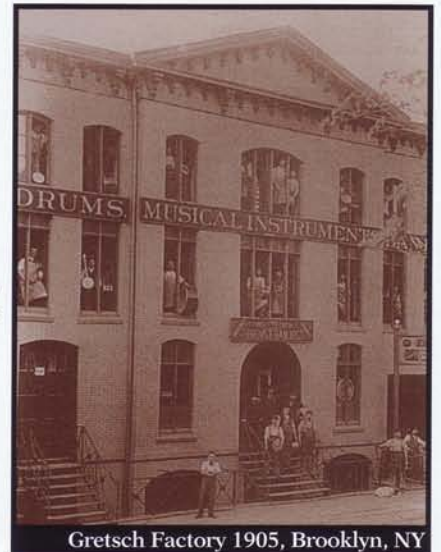
Fred Gretsch, Jr.

As a result of its drum manufacturing leadership, superior sound and aesthetic qualities, Gretsch has always enjoyed great relationships with some of the world's most renowned drummers. Pioneering drummers such as Chick Webb, Dave Tough, Mel Lewis, Max Roach, and Art Blakey were some of the big names playing Gretsch throughout the 30's through the 60's. Today, modern day legends such as Vinnie Colaiuta, Phil Collins, Harvey Mason, and Charlie Watts, to name a few, choose to play Gretsch; we are also proud that a new generation of cutting-edge drummers such as Cindy Blackman, Rob Bourdon, and Stan Frazier have also discovered "That Great Gretsch Sound."



Bill Gretsch

A new generation of players brought new inspiration that led to the development of Renown Maple, Catalina and Blackhawk Series drums. These series take their cue from the top-of-the-line Gretsch U.S.A.-made drums, to meet the needs of drummers at all playing levels and budgets. As you can see as you read through the catalog, our new series carry on Gretsch's 120-year legacy of drum making innovation and passion, and set the stage for Gretsch Drums' continued growth in the new Millennium.



Gretsch Factory 1905, Brooklyn, NY

Gretsch U.S.A. Professional Drums – Features

“The Standard of the World” set by Gretsch over the past 3 centuries of drum manufacturing is evident in every aspect of Gretsch Professional Drums. Handcrafted quality, classic features and 120 years of manufacturing experience all contribute to the magic that is *“That Great Gretsch Sound.”*



1939

The Drum Shell

The soul of every Gretsch U.S.A. drum, our six-ply Maple shell design has been around for the past five decades and is an exclusive feature that will not be found on any other brand in the market today. The one thing we hear over and over from drummers is that the great Gretsch sound is the same as it has always been.



The Bearing Edge

All professional Gretsch U.S.A. drums feature a 30-degree bearing edge that is unique to Gretsch and contributes to our legendary sound. This edge design maximizes the warmth of the Maple and focuses the tone and projection of the shell. All shells are sealed in the interior with our special formulated silver sealer that we have used since the 1960's and make them unmistakably Gretsch.



The Drum Hardware

To create the optimum sound, you must start with quality materials or your sound just won't measure up. All Gretsch U.S.A. metal parts are made the same way they were made in the 1930's, using heavy-duty zinc alloy and then die-cast. After casting, the parts are triple-plated with copper, followed by nickel, and finally chrome, then polished to a brilliant luster.

Toms and snare drums are finished off with heavy gauge die-cast hoops. All mounted toms include GTS suspension systems for maximum resonance, and all 8", 10" and 12" toms feature Gretsch's unique 5-lug configuration. The combination of these components contributes to the sound that has defined Gretsch for so many years.



The Drum Finish

Gretsch is proud to be the world's only major drum manufacturer that uses nitro-cellulose lacquer on its U.S.A. drums. There are far easier ways of painting drums, including using polyester-based products, but a company like Gretsch that has built its reputation not only on its sound, but its appearance, will not compromise when it comes to its lacquer finishes.

For players who prefer a more traditional drum look, Gretsch's Nitron coverings, including easily-identifiable Gretsch sparkle and vintage patterns, not only provide an alternative to lacquer finishes, but are durable and as individual as the drummer that plays on them.



The Drum Heads

Gretsch Permatone heads used on all Gretsch U.S.A.-made drums are manufactured to our exact specifications and are available in both coated and clear versions. Bass drum batter heads are pre-muffled for great sound right out of the box.



USA Custom



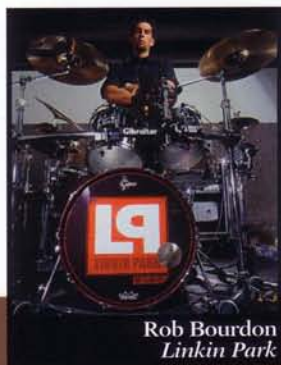
Rosewood Gloss Lacquer (WR)

SIZE	MODEL
16" x 22" Bass	C-1622B
9" x 10" Tom w/GTS	C-0910T
10" x 12" Tom w/GTS	C-1012T
14" x 14" Floor w/Legs	C-1414F
5" x 14" 8-Lug Snare	C-05148S

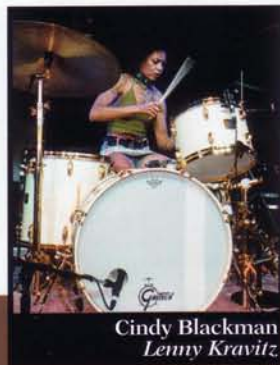
HARDWARE

GT-STCL Tom Arm x 1
GT-STCR Tom Arm x 1

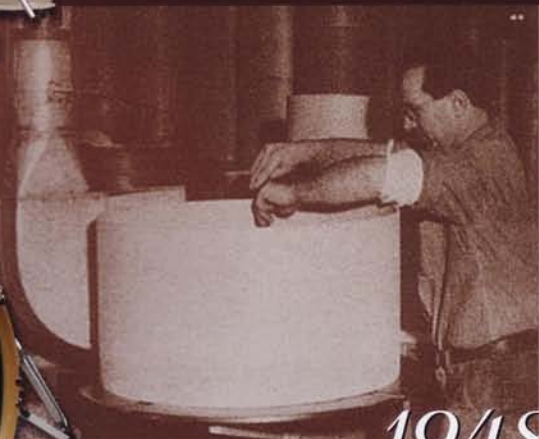
Outfitted with Gibraltar 9600PK hardware pack and additional components



Rob Bourdon
Linkin Park



Cindy Blackman
Lenny Kravitz



1948

Millennium Maple Gloss Lacquer (GMM)

SIZE	MODEL
18" x 22" Bass	C-1822B
8" x 10" Tom w/GTS	C-0810T
9" x 12" Tom w/GTS	C-0912T
11" x 14" Tom w/GTS	C-1114T
13" x 16" Tom w/GTS	C-1316T
5 1/2" x 14" 10-Lug Snare	C-55141S

HARDWARE

- GT-STCL Tom Arm x 2
- GT-STCR Tom Arm x 2

Outfitted with Gibraltar 6600PK hardware pack and additional components



Walnut Gloss Lacquer (WW)

SIZE	MODEL
18" x 20" Bass	C-1820B
8" x 8" Tom w/GTS	C-0808T
9" x 10" Tom w/GTS	C-0910T
10" x 12" Tom w/GTS	C-1012T
12" x 14" Tom w/GTS	C-1214T
5" x 14" 8-Lug Snare	C-05148S

HARDWARE

- GT-STCL Tom Arm x 2
- GT-STCR Tom Arm x 2

Outfitted with Gibraltar 6600PK hardware pack and additional components

USA Custom

1949



Black Marine Nitron (BMP)

SIZE	MODEL
16" x 24" Bass	C-1624B
6" x 8" Tom w/GTS	C-0608T
8" x 12" Tom w/GTS	C-0812T
14" x 16" Tom w/GTS	C-1416T
6" x 14" 20 Lug Black Brass Snare	C-06142BS

HARDWARE

GT-STCL Tom Arm x 2

GT-STCR Tom Arm x 1

Outfitted with Gibraltar 9600PK hardware pack and additional components



Phil Collins
Solo Artist



Brad Wilk
Audioslave



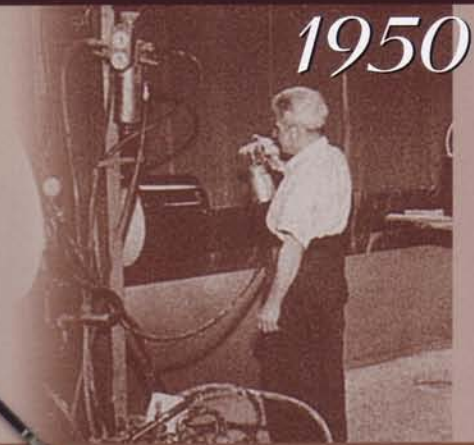
White Marine Nitron (WMP)

SIZE	MODEL
16" x 20" Bass	C-1620B
8" x 12" Tom w/GTS	C-0812T
14" x 14" Floor w/Legs	C-1414F
5" x 14" 8-Lug Snare	C-05148S

HARDWARE

GT-STCR Tom Arm x 1

Outfitted with Gibraltar 5600PK hardware pack and additional components



1950

Silver Sparkle Nitron (SSP)

SIZE	MODEL
18" x 22" Bass	C-1822B
7" x 8" Tom w/GTS	C-0708T
8" x 10" Tom w/GTS	C-0810T
9" x 12" Tom w/GTS	C-0912T
11" x 14" Tom w/GTS	C-1114T
13" x 16" Tom w/GTS	C-1316T
5" x 14" 8-Lug Snare	C-05148S

ADDITIONAL DRUMS:

6" x 13" FFS 2by4 Maple-Brass Snare	S-0613-FMB
5 1/2" x 8" Mighty Mini Steel Snare	S-5508-SST

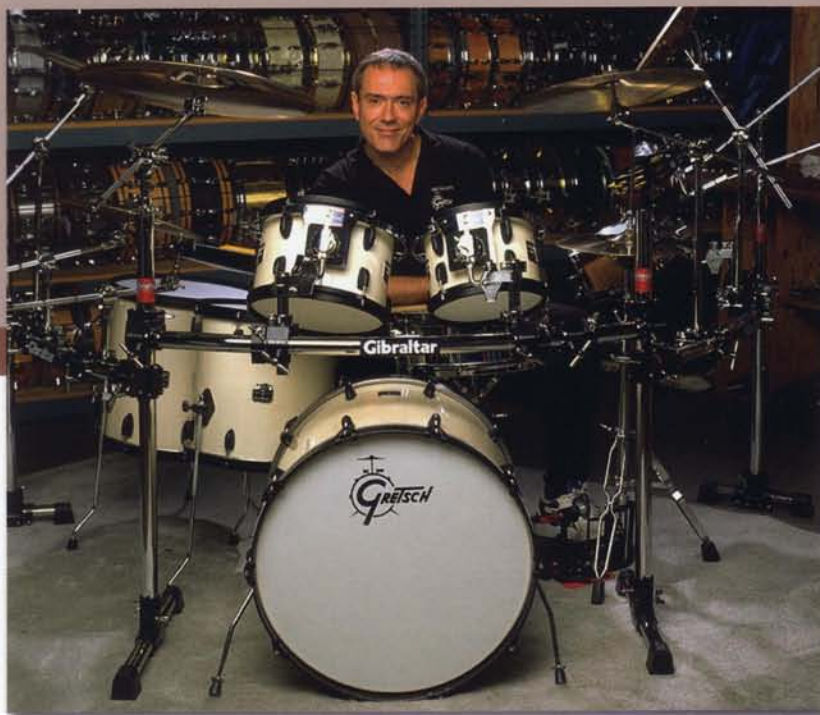
HARDWARE

GT-STCL Tom Arm x 6

Outfitted with custom Gibraltar Road Series Rack system and additional components



Gretsch U.S.A. Signature Drum Sets



Two of Gretsch's top endorsers and drumming legends have teamed up with Gretsch to put their own personal touch on "That Great Gretsch Sound."

The Vinnie Colaiuta "Signature" series features "White Wash" gloss lacquer that is accented with black powder-coated hardware on all drums.

Harvey Mason's "Signature" drums have Gretsch's classic "Satin Ebony" finish complemented with unique Gretsch "gunmetal" plated hardware.

Additional sizes and configurations are available for the Vinnie Colaiuta and Harvey Mason Signature kits. Go to gretschdrums.com for additional information.

Vinnie Colaiuta Signature Kit (GVS0622K) White Wash w/ Black Hardware (VSW)

SIZE	MODEL
18" x 22" Bass	V-1822B
7" x 10" Tom w/GTS	V-0710T
8" x 12" Tom w/GTS	V-0812T
14" x 14" Floor w/Legs	V-1414F
16" x 16" Floor w/Legs	V-1616F
5" x 14" 8-Lug Snare	V-05148W

Outfitted with custom Gibraltar Road Series Rack system and additional components

Harvey Mason Signature Kit (GBRHMSS2K) Satin Ebony Lacquer w/ Gunmetal Hardware (SEB)

SIZE	MODEL
22" x 22" Bass	H-2222B
8" x 10" Tom w/GTS	H-0810T
8" x 12" Tom w/GTS	H-0812T
8" x 13" Tom w/GTS	H-0813T
14" x 14" Tom w/GTS	H-1414T
14" x 15" Tom w/GTS	H-1415T
5" x 14" 8-Lug Snare	H-05148-SEB

Outfitted with custom Gibraltar Road Series Rack system and additional components



USA Maple

1950

UD-S683 Shell Pack Satin Vintage Blond (VBO)

SIZE	MODEL
16" x 18" Bass	UD-1618B
8" x 12" Tom w/GTS	UD-0812T
14" x 14" Floor w/Legs	UD-1414F
ADDITIONAL DRUMS:	
5" x 14" 10-Lug Snare	UD-0514S

HARDWARE

GT-STCR Tom Arm x 1
Outfitted with Gibraltar 8600PK
hardware pack and additional
components



Built in the U.S.A. to the same standards as our Custom and Signature drums, the USA Maple series is a focused range of the most popular sizes suitable for any type of playing situation. USA Maple drums are available in popular pre-configured set-ups and individual components in five satin finishes.

Gretsch Standard Features:

- Five-lug tuning on 8", 10" and 12" toms
- Gretsch Permatone heads
- Original Gretsch six-ply Maple shell with silver interior sealer.
- Available in five satin wood grain finishes
- Die-cast hoops on toms and snares
- GTS Suspension System on mounted toms



UD-S604 Shell Pack Satin Azure Blue (ABO)

SIZE	MODEL
16" x 20" Bass	UD-1620B
7" x 10" Tom w/GTS	UD-0710T
8" x 12" Tom w/GTS	UD-0812T
14" x 14" Floor w/Legs	UD-1414F
ADDITIONAL DRUMS:	
5" x 14" 10-Lug Snare	UD-0514S

HARDWARE

GT-STCL Tom Arm x 1
GT-STCR Tom Arm x 1
Outfitted with Gibraltar 6600PK
hardware pack and additional
components



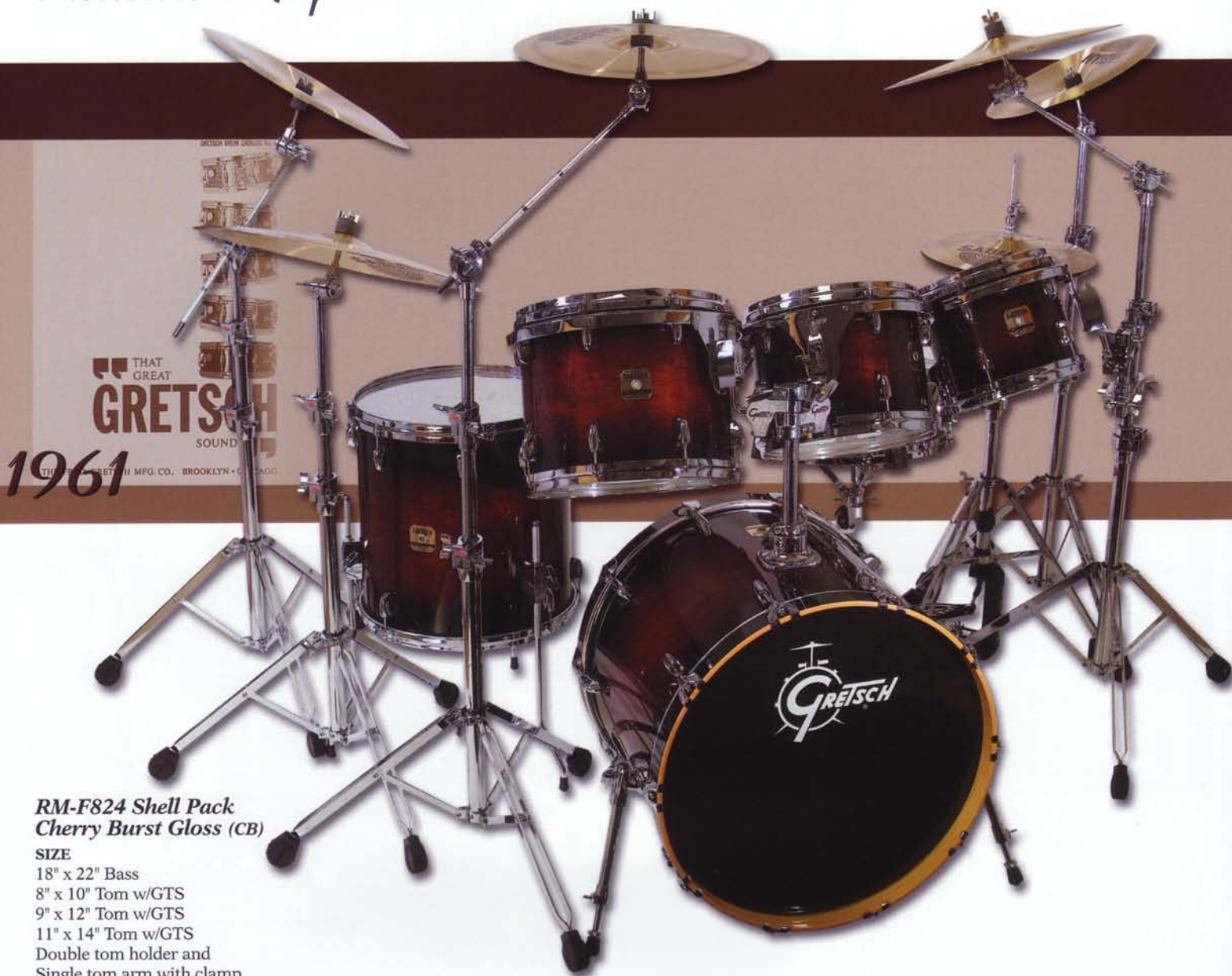
UD-F824 Shell Pack Satin Sun Amber (SAO)

SIZE	MODEL
18" x 22" Bass	UD-1822B
8" x 10" Tom w/GTS	UD-0810T
9" x 12" Tom w/GTS	UD-0912T
11" x 14" Tom w/GTS	UD-1114T
ADDITIONAL DRUMS:	
13" x 16" Tom w/GTS	UD-1316T
6" x 14" 10-Lug Snare	UD-0614S

HARDWARE

GT-STCL Tom Arm x 2
GT-STCR Tom Arm x 2
Outfitted with Gibraltar 6600PK
hardware pack and additional
components

Renown Maple



RM-F824 Shell Pack Cherry Burst Gloss (CB)

SIZE
 18" x 22" Bass
 8" x 10" Tom w/GTS
 9" x 12" Tom w/GTS
 11" x 14" Tom w/GTS
 Double tom holder and
 Single tom arm with clamp

ADDITIONAL DRUMS:

SIZE	MODEL
16" x 16" Floor w/Legs	RM-1616F
5 1/2" x 14" 10-Lug	
Black Chrome Steel Snare	S-5514-SBS

HARDWARE

Outfitted with Gibraltar 9600PK hardware pack and additional components

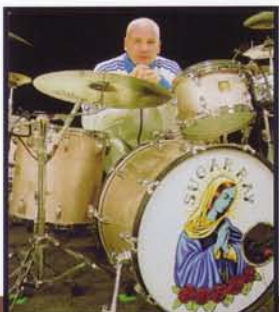
With Gretsch U.S.A.-made drums as our roadmap, we designed the Renown Maple Series to deliver top-class performance for drummers at any playing level, from clubs to arenas. Built with many of the features from Gretsch's top-end U.S.A.-made drums, Renown Maple delivers exceptional quality, stunning looks and today's sound that drummers are looking for in a Gretsch drum set. Renown Maple drums are extremely versatile, and are at home in any musical environment.

Gretsch Standard Features:

- Five-lug tuning on 8", 10" and 12" toms
- 30-degree bearing edges on toms and bass drums
- Die-cast hoops and GTS Suspension System on mounted toms
- Six-ply Tom and Bass drum shells
- Silver internal sealer

Renown Maple Exclusive Features:

- 100% American ROCK maple shells
- Ten-ply Maple snare with 45-degree bearing edges and die-cast hoops
- Fully independent height-adjustable double tom holder
- Eight high-gloss UV finishes
- Professional Evans Drum heads on all drums:
 - Toms** - clear G2 batter and G1 resonant
 - Snare** - G1 coated batter and 300-snare side
 - Bass** - EMAD pre-muffled batter head



Stan Frazier
Sugar Ray



Mike Marsh
Dashboard Confessional

**RM-F824 Shell Pack
Autumn Burst Gloss (AB)**

SIZE
18" x 22" Bass
8" x 10" Tom w/GTS
9" x 12" Tom w/GTS
11" x 14" Tom w/GTS
Double tom holder and
Single tom arm with clamp

ADDITIONAL DRUMS:
SIZE **MODEL**
5" x 13" 8-Lug Renown Snare RM-0513S

HARDWARE

Outfitted with Gibraltar 6600PK hardware
pack and additional components



1958
DIAMOND BRILLIANT FINISH
Gretsch



**RM-F824 Shell Pack
Magenta Purple Gloss (MP)**

SIZE
18" x 22" Bass
8" x 10" Tom w/GTS
9" x 12" Tom w/GTS
11" x 14" Tom w/GTS
Double tom holder and
Single tom arm with clamp

ADDITIONAL DRUMS:
SIZE **MODEL**
13" x 16" Tom w/GTS RM-1316T
5" x 14" 8-Lug Renown Snare RM-0514S
5" x 13" 8-Lug
Hammered Brass Snare S-0513-HBR

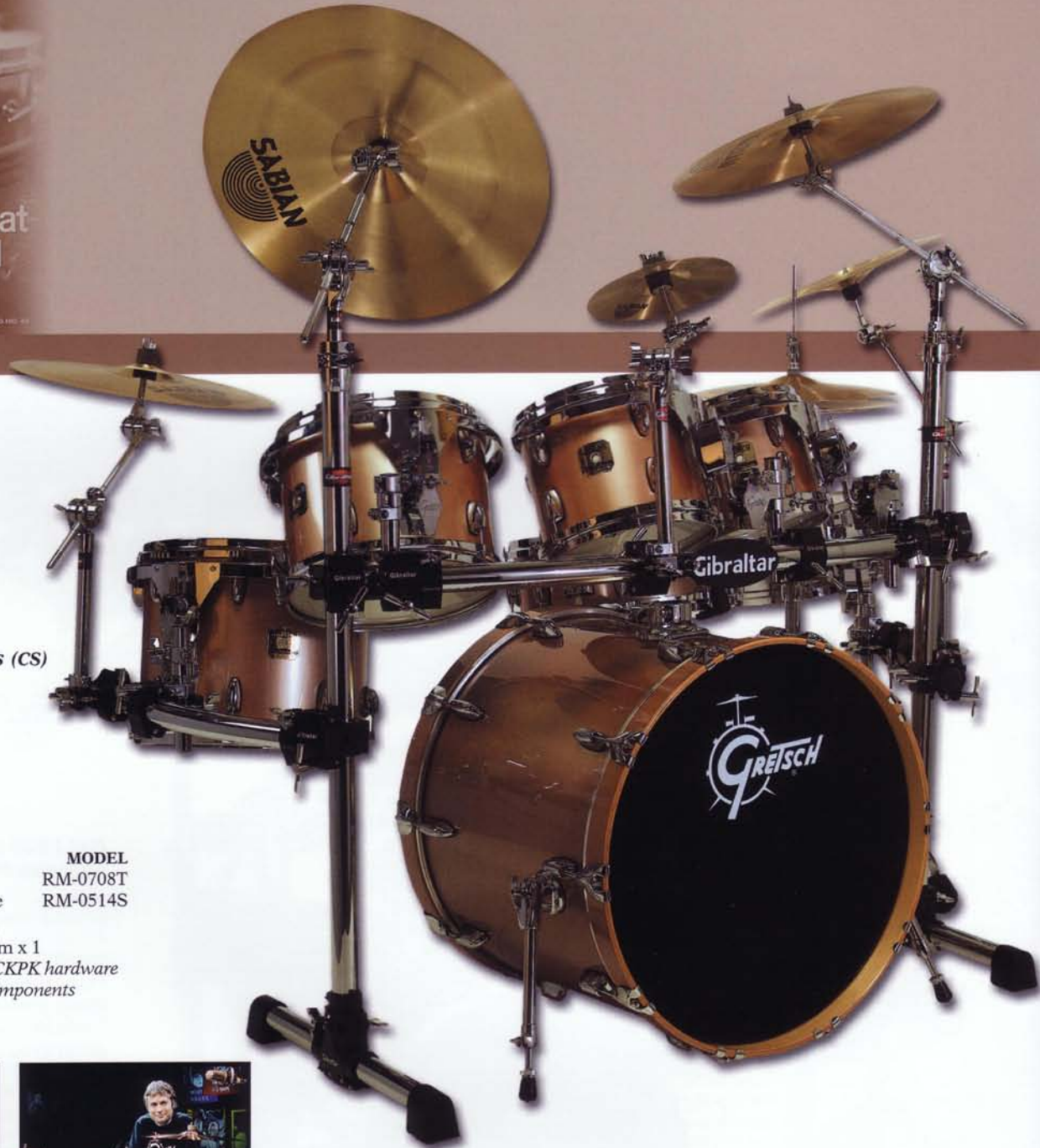
HARDWARE

GT-STCR Tom Arm x 1
Outfitted with Gibraltar 6600PK hardware
pack and additional components



Renown Maple

1966



RM-F824 Shell Pack Champagne Silk Gloss (CS)

SIZE

18" x 22" Bass
8" x 10" Tom w/GTS
9" x 12" Tom w/GTS
11" x 14" Tom w/GTS
Double tom holder and
Single tom arm with clamp

ADDITIONAL DRUMS:

SIZE

7" x 8" Tom w/GTS
5" x 14" 8-Lug Renown Snare

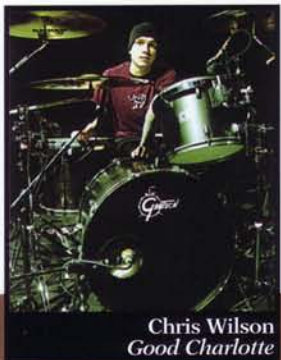
MODEL

RM-0708T
RM-0514S

HARDWARE

GT-STCR Tom Arm x 1

Outfitted with Gibraltar RACKPK hardware
pack and additional components



Chris Wilson
Good Charlotte



Trey Gray
Jewel / Faith Hill



**"that Great
GRETSCHE
SOUND"**

1969

RM-F824 Shell Pack Piano Black Gloss (PB)

SIZE
 18" x 22" Bass
 8" x 10" Tom w/GTS
 9" x 12" Tom w/GTS
 11" x 14" Tom w/GTS
 Double tom holder and
 Single tom arm with clamp

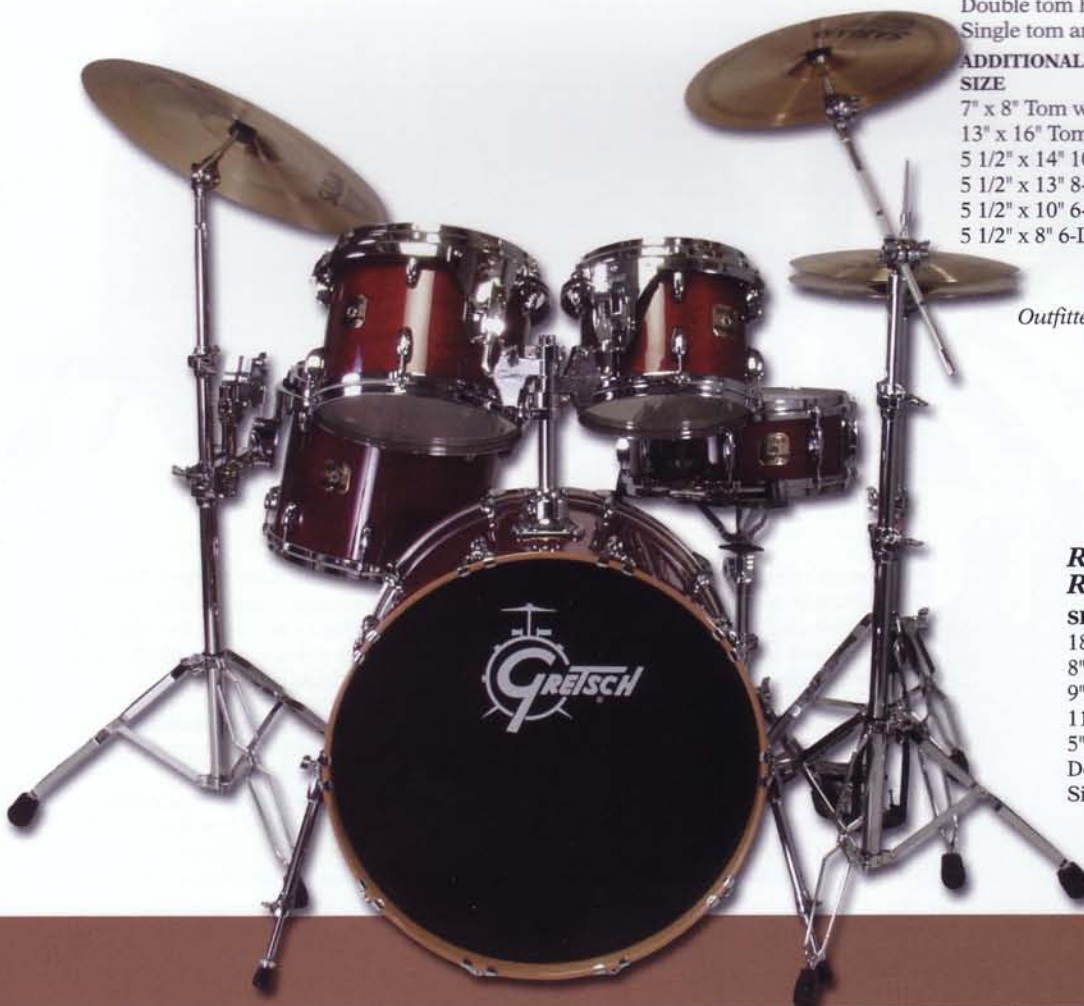
ADDITIONAL DRUMS:

SIZE
 7" x 8" Tom w/GTS
 13" x 16" Tom w/GTS
 5 1/2" x 14" 10-Lug FFS Maple Snare
 5 1/2" x 13" 8-Lug FFS Maple Snare
 5 1/2" x 10" 6-Lug Mighty Mini Wood Snare
 5 1/2" x 8" 6-Lug Mighty Mini Wood Snare

MODEL
 RM-0708T
 RM-1316T
 S-5514-FMP
 S-5513-FMP
 S-5510-BWD
 S-5508-BWD

HARDWARE

GT-STCR Tom Arm x 4
 Outfitted with Gibraltar 9600PK hardware pack
 and additional components



**RM-F825 Shell Pack
Red Cherry Gloss (RC)**

SIZE
 18" x 22" Bass
 8" x 10" Tom w/GTS
 9" x 12" Tom w/GTS
 11" x 14" Tom w/GTS
 5" x 14" 8-Lug Snare
 Double tom holder and
 Single tom arm with clamp

HARDWARE

Outfitted with Gibraltar
 6600PK hardware pack

Catalina Birch

That Great Gretsch Sound

1971

CA-F825 Shell Pack Vintage Burst Gloss (VB)

SIZE

18" x 22" Bass
8" x 10" Tom w/GTS
9" x 12" Tom w/GTS
11" x 14" Tom w/GTS
5" x 14" 8-Lug Snare
Double tom holder and
Single tom clamp

HARDWARE

Outfitted with Gibraltar 5600PK
hardware pack and additional
components



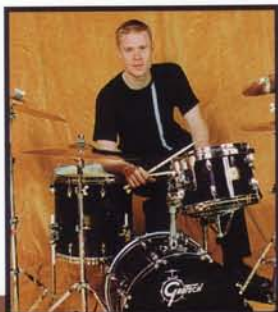
Gretsch's first Birch wood drum set, Catalina Birch Series takes the Gretsch Drums philosophy in a new direction and sets the standard for semi-professional sets. A 100% all-Birch shell with a host of top quality components produce a kit with great high-end attack with increased lows to suit a wide variety of playing styles. Catalina Birch is the new standard for a semi-professional drum set at an affordable price.

Standard Gretsch features:

- Five-lug tuning on 8", 10" and 12" toms
- GTS Suspension System on toms
- Matching finish birch bass drum hoops
- 12.7mm tom mounts

Catalina Birch exclusive features:

- Six-ply, 100% Birch shells with 45-degree bearing edges
- Single-ply clear heads on toms, coated snare, and pre-muffled bass drum heads
- Three popular configurations
- Four high-gloss UV wood-grain colors



Bill Stewart
Independent



Forrest Robinson
India.Arie

CA-S605 Shell Pack
Dark Walnut Gloss (DW)

SIZE
 16" x 20" Bass
 8" x 10" Tom w/GTS
 9" x 12" Tom w/GTS
 14" x 14" Floor w/Legs
 5" x 14" 8-Lug Snare
 Double tom holder

HARDWARE
 Outfitted with Gibraltar 8600PK
 hardware pack



**"THAT
 GREAT
 GRETSCHE
 SOUND"**

1971

CA-F825 Shell Pack
Caribbean Blue (CB)

SIZE
 18" x 22" Bass
 8" x 10" Tom w/GTS
 9" x 12" Tom w/GTS
 11" x 14" Tom w/GTS
 5" x 14" 8-Lug Snare
 Double tom holder and
 Single tom clamp

ADDITIONAL DRUMS:
SIZE
 7" x 8" Tom w/GTS
 13" x 16" Tom w/GTS

MODEL
 CA-0708T
 CA-1316T

HARDWARE
 Outfitted with Gibraltar 6600PK
 hardware pack and additional
 components



CA-S825 Shell Pack
Red Cherry Gloss (RC)

SIZE
 18" x 22" Bass
 9" x 12" Tom w/GTS
 10" x 13" Tom w/GTS
 16" x 16" Floor w/Legs
 5" x 14" 8-Lug Snare
 Double tom holder

HARDWARE
 Outfitted with Gibraltar 9600PK
 hardware pack



Catalina Club

THAT
GREAT
GRETSCH
SOUND

1977



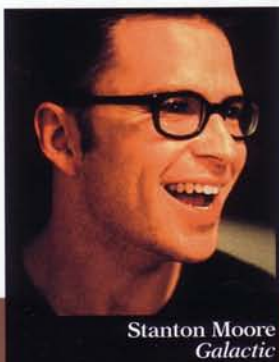
GCE-S684 Shell Pack White Marine Nitron (WP)

SIZE

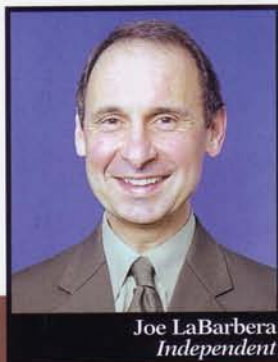
16" x 18" Bass
8" x 12" Tom w/GTS
14" x 14" Floor w/Legs
5" x 14" 8-Lug Snare
Single tom holder

HARDWARE

Outfitted with Gibraltar 4600PK
hardware pack



Stanton Moore
Galactic



Joe LaBarbera
Independent

With a nod towards the classic kits of yesterday, the Catalina Club Series offers a new spin on an old favorite. With its small configurations and classic styled features, the Catalina Club is a perfect back-up kit, an ideal portable kit or a great first step into a traditional smaller configuration set-up. Warm Mahogany shells produce a deep rich tone that takes you back to days long past.

Standard Gretsch Features:

- 30-degree bearing edges on all drums
- Durable vintage Nitron covered finishes
- Five-lug tuning on 8", 10" and 12" toms
- GTS Suspension System and 12.7mm mounts on all toms

Exclusive Catalina Club Features:

- Single-ply coated batter heads on toms and snare drum; pre-muffled bass drum heads
- Six-ply, 100% Mahogany shells with satin finished Maple bass drum hoops
- Low-mass, retro center-mounted lugs
- Two standard configurations and three finishes



GCE-S684 Shell Pack
Black Marine Nitron (BP)

SIZE

- 16" x 18" Bass
- 8" x 12" Tom w/GTS
- 14" x 14" Floor w/Legs
- 5" x 14" 8-Lug Snare
- Single tom holder

HARDWARE

Outfitted with Gibraltar 4600PK hardware pack



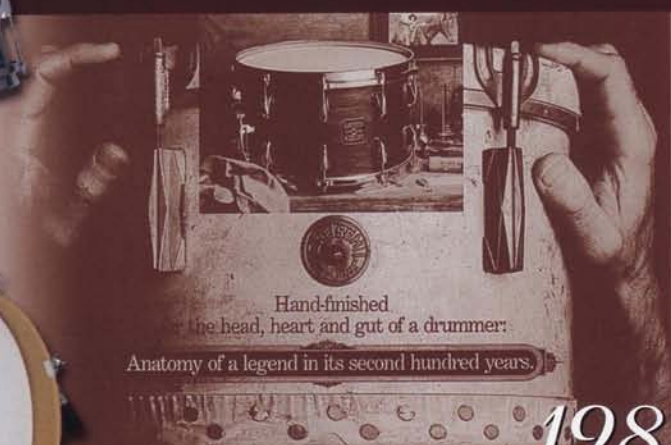
GCE-S665 Shell Pack
Silver Sparkle Nitron (SS)

SIZE

- 16" x 16" Bass w/bass drum riser
- 6" x 8" Tom w/GTS
- 7" x 10" Tom w/GTS
- 13" x 13" Floor w/Legs
- 5" x 12" 8-Lug Snare
- Double tom holder

HARDWARE

Outfitted with Gibraltar 4600PK hardware pack and additional components



1983

Blackhawk

Standard of the World

1991
GRETSCH



Just because you're on a budget doesn't mean that you have to sacrifice quality. The Blackhawk Series was designed for the drummer that wants to start on a great set of drums and to get his or her first taste of the legendary Gretsch sound. Blackhawk offers many features found on more expensive Gretsch drums, multiple configurations and a full range of add-ons so that you can expand your kit as you develop your talent.

Standard Gretsch Features:

- 30-degree bearing edges on all drums
- Durable Nitron covered finishes
- 5-lug tuning on 8", 10" and 12" toms
- 12.7mm mounts on all toms

Exclusive Blackhawk Features:

- Single-ply coated batter heads on toms and snare drum; pre-muffled bass drum heads
- Six-ply, 100% Mahogany shells
- Low mass die-cast lugs on all drums
- Two standard configurations and three finishes

BH-S625 Shell Pack Wine Red Metallic Nitron (WR)

SIZE

- 16" x 22" Bass
- 9" x 12" Tom w/GTS
- 10" x 13" Tom w/GTS
- 16" x 16" Floor w/Legs
- 5" x 14" 8-Lug Snare
- Double tom holder

ADDITIONAL DRUMS:

SIZE

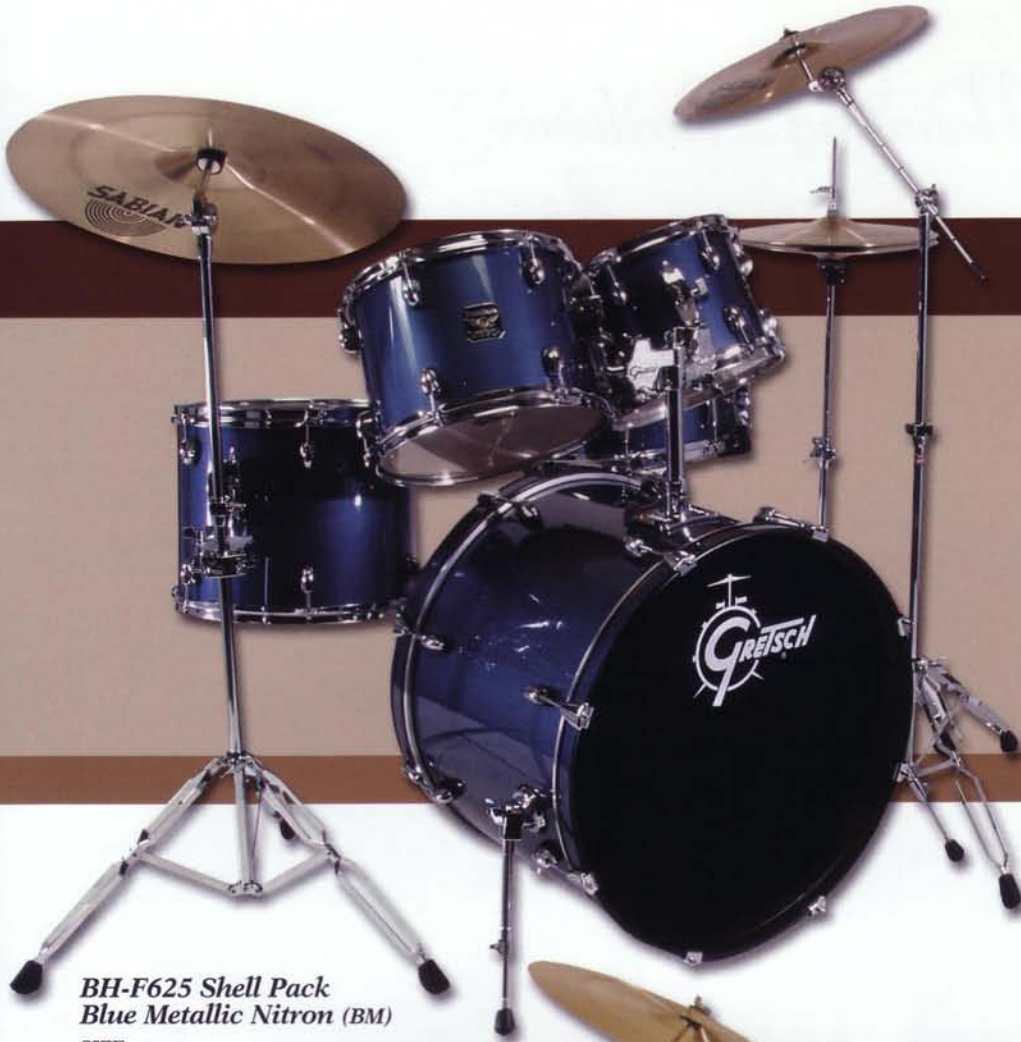
- 8" x 10" Tom
- 16" x 22" Bass

MODEL

- BH-0810T
- BH-1622B

HARDWARE

GBTH-DL Double tom holder x 1
Outfitted with Gibraltar 4600PK hardware pack and additional components



BH-F625 Shell Pack
Blue Metallic Nitron (BM)

SIZE
 16" x 22" Bass
 8" x 10" Tom w/GTS
 9" x 12" Tom w/GTS
 11" x 14" Tom w/GTS
 5" x 14" 8-Lug Snare
 Double tom holder and
 Single tom clamp

HARDWARE
 Outfitted with Gibraltar 4600PK
 hardware pack

GRETSCH DRUMS

Standard of the World



1998



BH-S625 Shell Pack
Liquid Black Nitron (LB)

SIZE
 16" x 22" Bass
 9" x 12" Tom w/GTS
 10" x 13" Tom w/GTS
 16" x 16" Floor w/Legs
 5" x 14" 8-Lug Snare
 Double tom holder

HARDWARE
 Outfitted with Gibraltar 4600PK
 hardware pack

Gretsch Drums Mounting Hardware

All Gretsch tom holders, tom arms and tom stands feature 12.7mm knurled arms with memory locks to fit the model G9020 tom bracket that comes standard on all levels of Gretsch drums.

Gretsch Tom Holders feature a 1" diameter down tube with memory lock, and are designed for use with Gretsch bass drum mounting plates.



◀ **GTH-DL - Professional double tom holder** - independent height-adjustable ball L-arms. Standard on Renown Maple and Catalina Birch series drum sets.

GTH-SL - Professional single tom holder - height-adjustable ball L-arm. Standard on Renown Maple and Catalina Birch series drum sets.



GBTH-DL - Standard double tom holder - adjustable ball L-arms. Comes on Catalina Club and Blackhawk series drum sets.



◀ **GBTH-SL - Standard single tom holder** - adjustable ball L-arm. Comes on Catalina Club and Blackhawk series drum sets.



◀ **G9002Z - Classic double tom holder** - independent height-adjustable ratchet L-arms.

G9001Z - Classic single tom holder - independent height-adjustable ratchet L-arm.

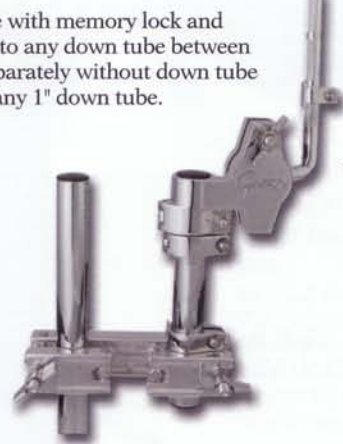


Gretsch tom arms feature a 1" down-tube with memory lock and adjustable multi-clamp. Can be attached to any down tube between 3/4" and 1 1/4". Tom arms can be used separately without down tube or multi-clamp and mounted directly to any 1" down tube.

GT-STCL - Single tom arm - High position ball adjustable L-arm. Standard on Renown Maple series drum sets.



◀ **GT-STCR - Single Tom Arm** - Low position ball adjustable L-arm. Standard on Renown Maple series drum sets.



Gretsch double tom stands by GIBRALTAR are available in professional and standard weights. Each stand features independent height adjustable ball L-arms with memory locks.

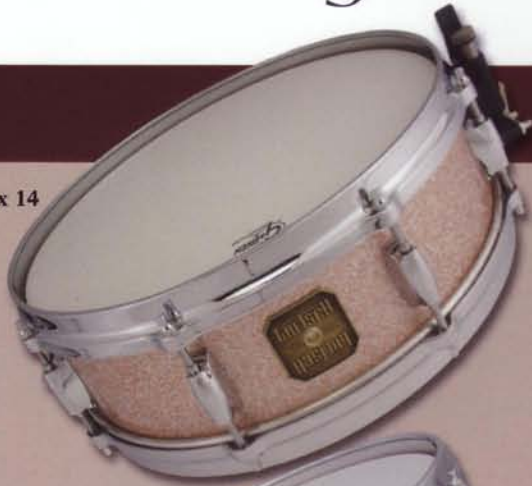
◀ **6613GR - Standard Gretsch by Gibraltar Double Tom Stand.**

9613GR - Professional Gretsch by Gibraltar Double Tom Stand.



Gretsch U.S.A. Custom Series Snares

4 x 14



5 x 14



5 1/2 x 14



6 1/2 x 14



8 x 14



6 x 14



The heart of Gretsch U.S.A. Custom series drum sets, the U.S.A. Custom Series snares are available in a wide choice of sizes using the legendary Gretsch 6-ply Maple or Black Brass shells. Maple model drums are available with your choice of the Gretsch Lightning or Nickelworks throw-offs. Black Brass snares come standard with the Lightning throw-off and all models are supplied with Gretsch Permatone drumheads.

USA Custom Maple Snares

SIZE	MODEL	LUGS	THROW OFF	HARDWARE	HOOPS
4 x 14	C-04148NS	8 Double	Nickelworks	Chrome	Die-cast
5 x 14	C-05148S	8 Double	Lightning	Chrome	Die-cast
5 x 14	C-05148NS	8 Double	Nickelworks	Chrome	Die-cast
5 1/2 x 14	C-55141S	10 Double	Lightning	Chrome	Die-cast
5 1/2 x 14	C-55141NS	10 Double	Nickelworks	Chrome	Die-cast
6 1/2 x 14	C-65141S	10 Double	Lightning	Chrome	Die-cast
6 1/2 x 14	C-65141NS	10 Double	Nickelworks	Chrome	Die-cast
6 1/2 x 14	C-65146S	16 Single	Lightning	Chrome	Die-cast
6 1/2 x 14	C-65146NS	16 Single	Nickelworks	Chrome	Die-cast
6 1/2 x 14	C-65142S	20 Single	Lightning	Chrome	Die-cast
6 1/2 x 14	C-65142NS	20 Single	Nickelworks	Chrome	Die-cast
8 x 14	C-08142S	20 Single	Lightning	Chrome	Die-cast
8 x 14	C-08142NS	20 Single	Nickelworks	Chrome	Die-cast

USA Custom Black Brass Snares

SIZE	MODEL	LUGS	THROW OFF	HARDWARE	HOOPS
5 x 14	C-05148BS	8 Double	Lightning	Chrome	Die-cast
6 x 14	C-06142BS	20 Single	Lightning	Chrome	Die-cast

Vinnie Colaiuta Signature Snares



Vinnie Colaiuta Signature Series snare drums are available in both wood and brass models. The V-05148N features an extra thick 6-ply Gretsch Maple shell for increased attack. All models come standard with the Lightning throw-off and Gretsch Permatone drumheads

Vinnie Colaiuta Signature Snares							
SIZE	MODEL	LUGS	THROW OFF	COLOR	SHELL	HARDWARE	HOOPS
5 x 14	V-05148N	8 Double	Lightning	Satin Maple	Custom Plus	Chrome	Die-cast
5 x 14	V-05148W	8 Double	Lightning	White Wash	Custom	Black	Die-cast
5 x 14	V-05148WB	8 Double	Lightning	White	Brass	Black	Die-cast
6 1/2 x 14	V-65142W	20 Single	Lightning	White Wash	Custom	Black	Die-cast
6 x 14	V-06142WB	20 Single	Lightning	White	Brass	Black	Die-cast

Harvey Mason Signature Snares

Harvey Mason Signature Series snare drums are finished in Satin Ebony, accented with gunmetal finish hardware. Comes standard with the Lightning throw-off and Gretsch Permatone drumheads.



Harvey Mason Signature Snares							
SIZE	MODEL	LUGS	THROW OFF	COLOR	SHELL	HARDWARE	HOOPS
5 x 14	H-05148-SEB	8 Double	Lightning	Satin Ebony	Custom	Gunmetal	Die-cast
5 1/2 x 14	H-55140-SEB	10 Double	Lightning	Satin Ebony	Custom	Gunmetal	Die-cast

Gretsch USA Maple Series Snares



Gretsch USA Maple snare drums are available in three depths – 5", 6" and 7" – and use the legendary Gretsch 6-ply Maple shell. All models come standard with the drop throw-off, Gretsch Permatone drumheads, and are available in all USA Maple finishes.

USA Maple Snare					
SIZE	MODEL	LUGS	THROW OFF	HARDWARE	HOOPS
5 x 14	UD-0514S	10 Double	Drop-Style	Chrome	Die-cast
6 x 14	UD-0614S	10 Double	Drop-Style	Chrome	Die-cast
7 x 14	UD-0714S	20 Single	Drop-Style	Chrome	Die-cast

Free Floating Snares

5 1/2 x 10



5 1/2 x 12



5 1/2 x 13



Unlike any other series of snare drums offered by Gretsch, the Free-Floating system brings a new world of sound characteristics to the Gretsch range. Our floating shell design takes all of the stress away from the primary shell, allowing the drum to breathe and respond to any level of dynamics. And since these models are the only free-floating snares with a wooden base (rather than die-cast steel), they provide all of the benefits of the free-floating design with the rich sound of a Maple shell.

And what a sound it is. Every Gretsch free-floating snare, be it in 10", 12", 13" or 14" diameters, offers a much better dynamic range and much more articulation than any snare of its kind. And only Gretsch has the ability to cut a specific snare bed for each of these diameters. All Gretsch free-floating Maple models feature 2.3mm hoops with sleek single point lugs created specifically for these drums. Each 2" shell base is made of 10-ply 100% Rock Maple and finished in black while the primary shell features a 100% 6-ply Rock Maple shell finished in a natural gloss.

To take the free-floating advantages even further, Gretsch 2by4 models combine the warmth of Maple and the crack of brass. Each drum features a 2" tall top and bottom base ring made up of a 10-ply Rock Maple shell, which surrounds a 2" tall 3mm thick ring of brass. The combination of these two drum making materials produces a sound that truly has to be heard to be appreciated. All Gretsch 2by4 models feature die-cast hoops and single-point lugs created specifically for these drums.

All Free-Floating Snares feature EVANS drum heads

5 1/2 x 14



6 x 13



6 x 14



Free Floating Maple Snares

SIZE	MODEL	LUGS	THROW OFF	COLOR	HOOPS
5 1/2 x 10	S-5510-FMP	6 Double	Drop-Style	Natural Gloss	2.3mm
5 1/2 x 12	S-5512-FMP	8 Double	Drop-Style	Natural Gloss	2.3mm
5 1/2 x 13	S-5513-FMP	8 Double	Drop-Style	Natural Gloss	2.3mm
5 1/2 x 14	S-5514-FMP	10 Double	Drop-Style	Natural Gloss	2.3mm

Free Floating 2by4 Maple - Brass - Maple Snares

SIZE	MODEL	LUGS	THROW OFF	COLOR	HOOPS
6 x 13	S-0613-FMB	8 Double	Drop-Style	Natural Gloss	Die-cast
6 x 14	S-0614-FMB	10 Double	Drop-Style	Natural Gloss	Die-cast

10-Ply Maple Snares



10 Ply All Maple Snares

SIZE	MODEL	LUGS	THROW OFF	COLOR	HOOPS
4 x 14	S-0414-MAP	10 Double	Drop-Style	Natural Gloss	Die-cast
5 x 14	S-0514-MAP	10 Double	Drop-Style	Natural Gloss	Die-cast
5 x 13	RM-0513S	8 Double	Drop-Style	All Renown Finishes	2.3mm
5 x 14	RM-0514S	8 Double	Drop-Style	All Renown Finishes	Die-cast

10-ply Maple Snares feature a 100% Rock Maple shell with 45-degree bearing edges, die-cast hoops, drop throw-off and a high-gloss natural finish. The Renown Maple 13" model includes 2.3mm hoops and the 14" model features die-cast hoops. Both Renown models are available in all Renown Maple Series finishes. All 10-ply Maple Snares feature EVANS drumheads

10-Ply Exotic Maple Snares



10-ply Exotic Maple Snares feature a 100% Rock Maple shell with 45-degree bearing edges, die-cast hoops and drop throw-off, with an outside wood veneer of exotic Red Camphor accented with all brass hardware. Exotic Maple Snares feature EVANS drum heads.

10 All Exotic Maple Snares with Brass Hardware

SIZE	MODEL	LUGS	THROW OFF	COLOR	HOOPS
4 x 14	S-0414-RDC	10 Double	Drop-Style	Red Camphor	Die-cast
5 x 14	S-0514-RDC	10 Double	Drop-Style	Red Camphor	Die-cast

Mighty Mini Wood Snares

The addition of a Mighty Mini snare to your kit as your primary or secondary snare will open up your playing to a wide new range of ideas. Small in size, but not in sound, the Mighty Mini snares are designed for placement nearly anywhere on your kit and can be used in the traditional snare sound position or with the snares off for small tom-like effects. Each drum features an 8-ply Basswood shell in a natural high gloss finish. The 8", 10" and 12" sizes include the model GS9020 mounting bracket for unlimited positioning with any 12.7mm tom arm.



Basswood Mighty Mini Snares

SIZE	MODEL	LUGS	THROW OFF	COLOR	HOOPS
5 1/2 x 8	S-5508-BWD	6 Double	Side-Throw	Natural Gloss	1.6mm
5 1/2 x 10	S-5510-BWD	6 Double	Side-Throw	Natural Gloss	1.6mm
5 1/2 x 12	S-5512-BWD	6 Double	Side-Throw	Natural Gloss	1.6mm
4 x 13	S-0413-BWD	8 Double	Side-Throw	Natural Gloss	1.6mm

Hammered Brass Snares

Brass possesses a rich dark tone that, when hammered, produces a shell with a perfect blend of crack you would expect from a metal drum, with a deep tone and balance typically found in wood drums. Each drum features 45-degree bearing edges, die-cast hoops, drop throw-off and EVANS drum heads.



Hammered Brass Snares

SIZE	MODEL	LUGS	THROW OFF	HOOPS
5 x 13	S-0513-HBR	8 Double	Drop-Style	Die-cast
5 1/2 x 14	S-5514-HBR	10 Double	Drop-Style	Die-cast



Black Chrome Steel Snares

The opposite end of the sound spectrum from our Hammered Brass models, the Black Chrome Steel snare drums will let them know that you have arrived. With a 10-lug straight shell design, these drums can handle any dynamic range and excel in higher tuning ranges with explosive rim shots. Each drum features 45-degree bearing edges, die-cast hoops, drop throw-off and EVANS drum heads.

Black Chrome Steel Snares

SIZE	MODEL	LUGS	THROW OFF	HOOPS
4 x 14	S-0414-SBS	10 Double	Drop-Style	Die-cast
5 1/2 x 14	S-5514-SBS	10 Double	Drop-Style	Die-cast

Mighty Mini Steel Snares



Slightly brighter than the Basswood models, the Mighty Mini Steel snare drums are great in any musical setting. Small in size, but not in sound, the Mighty Mini snares are designed for placement nearly anywhere on your kit and can be used in the traditional snare sound position or with the snares off for small timbale like effects. Each drum features a 1.2mm steel shell in polished chrome. The 8", 10" and 12" sizes include the model GS9020 mounting bracket for unlimited positioning with any 12.7mm tom arm.

Basswood Steel Mini Snares

SIZE	MODEL	LUGS	THROW OFF	HOOPS
5 1/2 x 8	S-5508-SST	6 Double	Side-Throw	1.6mm
5 1/2 x 10	S-5510-SST	6 Double	Side-Throw	1.6mm
5 1/2 x 12	S-5512-SST	6 Double	Side-Throw	1.6mm
4 x 13	S-0413-SST	8 Double	Side-Throw	1.6mm

Gretsch Permatone Drumheads



Bass Drum Logo heads

Each Permatone drumhead features the Gretsch drum logo and is available in white or black, with or without internal dampening ring.

<i>Ebony Bass Logo Head</i>	
SIZE	MODEL
18"	G5522EL
20"	G5524EL
22"	G5526EL
24"	G5528EL
26"	G5530EL

<i>White Bass Logo Head</i>	
SIZE	MODEL
18"	G5522PL
20"	G5524PL
22"	G5526PL
24"	G5528PL
26"	G5530PL



<i>Ebony Bass Logo Head with Internal Muffling Ring</i>	
SIZE	MODEL
18"	G5522ER
20"	G5524ER
22"	G5526ER
24"	G5528ER

with ring

<i>White Bass Logo Head with Internal Muffling Ring</i>	
SIZE	MODEL
18"	G5522WR
20"	G5524WR
22"	G5526WR
24"	G5528WR



with ring

Tom and Snare Drum heads

Single-ply clear and coated Permatone heads are standard on all U.S.A. Gretsch drums and are available in a complete range of sizes.



<i>Single Ply Clear Heads</i>	
SIZE	MODEL
6"	G5597PC
8"	G5598PC
10"	G5599PC
12"	G5600PC
13"	G5601PC
14"	G5602PC
15"	G5509PC
16"	G5603PC
18"	G5604PC

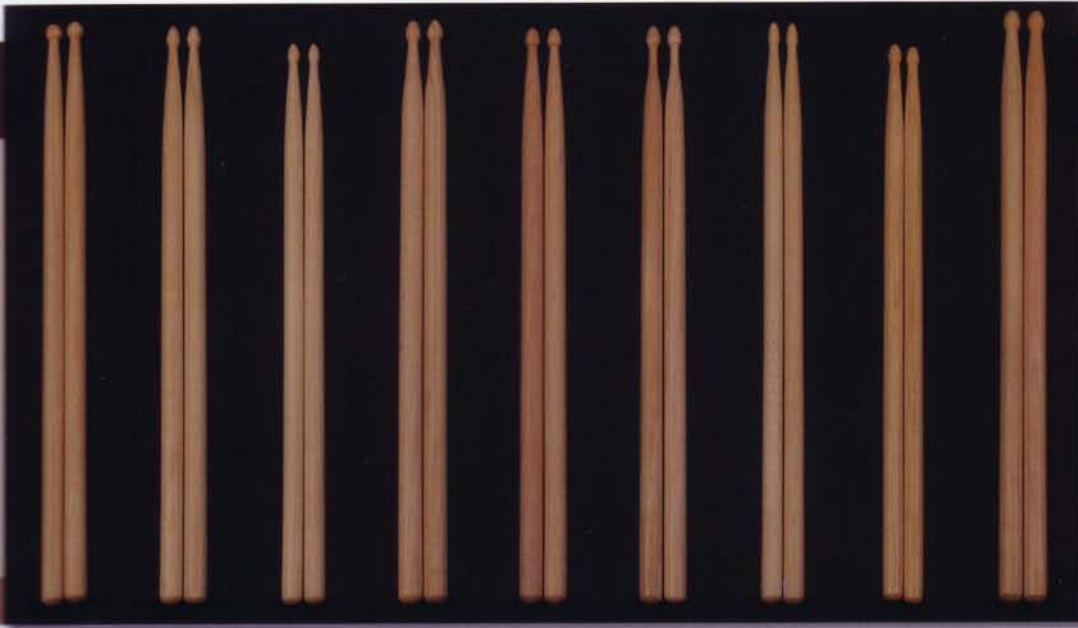
<i>Single Ply Coated Heads</i>	
SIZE	MODEL
6"	G5597P
8"	G5598P
10"	G5599P
12"	G5600P
13"	G5601P
14"	G5602P
15"	G5509P
16"	G5603P
18"	G5604P

Drumhead Pre-Packs

Gretsch's exclusive "Permatone" formula drumhead pre-packs are made specially for us by EVANS. Available in three pre-packs that are an ideal upgrade to any drum set or snare drum.

MODEL	PERMATONE SINGLE-PLY COATED HEAD SET PREPACK CONTENTS
GR-FHP	Fusion Pre-Pack with 1pc each 10" and 12", and 2 pc of 14"
GR-THP	Standard Pre-Pack with 1 pc each 12", 13", 14" and 16"
GR-SHP	Snare Pre-Pack with 1 pc single ply coated 14" and 1 pc 14" clear snare side, 1 pair Gretsch 5B wood tip drum sticks

Gretsch Vintage Drum Sticks



Vintage manufactured Gretsch drumsticks are based on the classic original stick designs of yesteryear. A wide variety of sizes are available for all playing situations. All sticks feature wood tips and are hand dipped in a protective lacquer clear coat finish.

GR-3A GR-5A GR-7A GR-2B GR-5B GR-5DTW GR-6DEJ GR-7DML GR-ROCK

<i>Gretsch Drumsticks</i>		
MODEL	SPECIFICATIONS	QTY
GR-3A	Round Wood Tip - 16 1/4 inches Length, .55 inches Diameter	6 Pack
GR-5A	Acorn Wood Tip - 16 1/8 inches Length, .59 inches Diameter	6 Pack
GR-7A	Bullet Wood Tip - 15 9/16 inches Length, .52 inches Diameter	6 Pack
GR-2B	Acorn Wood Tip - 16 1/4 inches Length, .63 inches Diameter	6 Pack
GR-5B	Acorn Wood Tip - 16 inches Length, .60 inches Diameter	6 Pack
GR-5DTW	Acorn Wood Tip - 16 1/4 inches Length, .61 inches Diameter	6 Pack
GR-6DEJ	Bullet Wood Tip - 16 3/16 inches Length, .51 inches Diameter	6 Pack
GR-7DML	Acorn Wood Tip - 15 1/2 inches Length, .51 inches Diameter	6 Pack
GR-ROCK	Acorn Wood Tip - 16 5/8 inches Length, .63 inches Diameter	6 Pack



Gretsch Drum Bags

Designed to protect your investments, each heavy-duty soft Gretsch bag features a plush interior, steel reinforced bindings, and heavy-duty triple stitched seams and zippers. Bags are black with classic orange trim and embroidered Gretsch logo.

<i>Gretsch Drum Bags</i>	
MODEL	SPECIFICATIONS
GR-5039B	4 x 14 Snare Drum Bag - Fits drum depths of 3 1/2" to 4 1/2" inches
GR-5040B	5 1/2 x 14 Snare Drum Bag - Fits drum depths of 5" to 6" inches
GR-5041B	6 1/2 x 14 Snare Drum Bag - Fits drum depths of 6" to 7" inches
GR-5038B	Heavy Duty Cymbal Bag - Holds up to 12 Cymbals with large side pocket
GR-5037B	Heavy Duty Stick Bag - Holds up to 15 pairs of sticks with small side pocket

Gibraltar Hardware Packs

The "Best with the Best", Gretsch proudly offers Gibraltar hardware as the perfect companion to any set of Gretsch drums. Choose from a wide range of features and levels pre-packaged in set-ups to outfit any set configuration.

RACKPK Hardware Pack

Features:

- Road Series curved rack with side extensions
- 9600 Series hi-hat stand, snare stand and bass drum pedal
- "Brake" tilter style hideaway boom arms
- Single post tom arms

The RACKPK hardware pack includes the GRS-350C curved rack with 20" inch curved side extensions, 9607ML-DP hi-hat stand, 9606 Ultra Adjust snare stand, 9611DC double chain drive single pedal, (2pc) LB-BT long booms, SB-BT short boom, and three single 1" post tubes for mounting Gretsch tom arms.



9600PK Hardware Pack

Features:

- Double-chain Intruder pedal
- Moveable leg hi-hat stand
- "Ultra Adjust" snare stand
- "Brake" style tilter cymbal stands

The 9600PK hardware pack includes (2pc) 9609 Brake tilter boom stands, 9610 Brake tilter straight cymbal stand, 9607ML-DP hi-hat stand, 9606 Ultra Adjust snare stand, and 9611DC double chain drive single pedal.



8600PK Hardware Pack

Features:

- Strap-drive Intruder pedal
- Flat base low profile designed stands
- Gearless snare stand basket
- "Brake" style tilter cymbal stands

The 8600PK hardware pack includes the 8609 Brake tilter boom stand, 8610 Brake tilter straight cymbal stand, 8607 hi-hat stand, 8606 snare stand, and 9611SD strap drive single pedal.



Gibraltar Hardware Packs

While these hardware packs will get you started, Gibraltar offers a wide range of additional stands and components to help customize your Gretsch kit. Visit gibraltarhardware.com on the World Wide Web for additional Gibraltar stands and accessories to complete your set-up.



6600PK Hardware Pack

Features:

- Double chain drive Avenger single pedal
- Moveable leg base hi-hat stand
- Gearless snare stand basket
- Hideaway boom cymbal stand

The 6600PK hardware pack includes the 6609 hideaway boom stand, 6610 straight cymbal stand, 6607 hi-hat stand, 6606 snare stand, and 6611 double chain drive single pedal.



5600PK Hardware Pack

Features:

- Single chain drive Prowler single pedal
- Moveable leg base hi-hat stand
- Gearless snare stand basket
- Hideaway boom cymbal stand

The 5600PK hardware pack includes the 5609 hideaway boom stand, 5610 straight cymbal stand, 5607 hi-hat stand, 5606 snare stand, and 5611 chain drive single pedal.



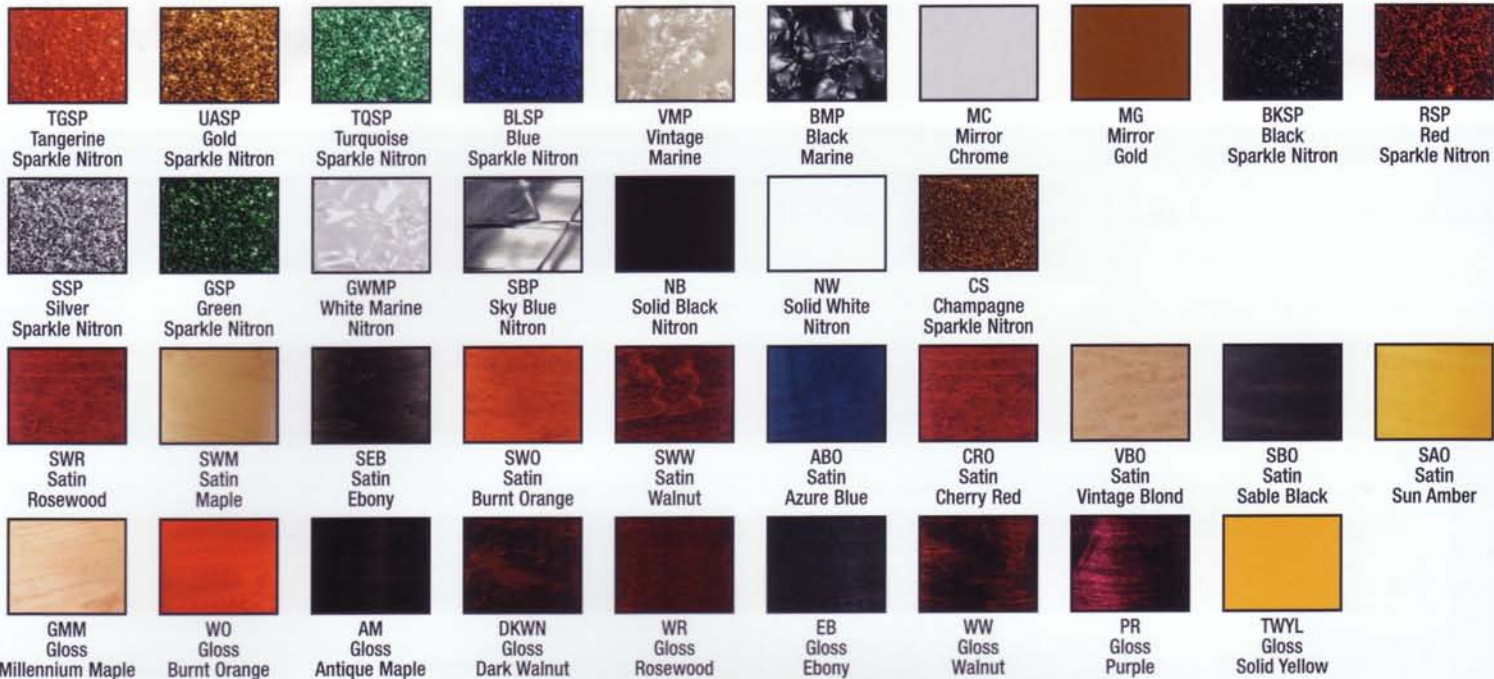
4600PK Hardware Pack

Features:

- Single chain drive single pedal
- Double-braced stands
- Adjustable snare stand basket
- Hideaway boom cymbal stand

The 4600PK hardware pack includes the 4609 hideaway boom stand, 4610 straight cymbal stand, 4607 hi-hat stand, 4606 snare stand, and 4611 chain drive single pedal.

USA Custom Series Finishes



CUSTOM DRUM SIZES

Custom Toms				Custom Floor Toms		Custom Bass Drums			
MODEL	SIZE	MODEL	SIZE	MODEL	SIZE	MODEL	SIZE	MODEL	SIZE
C-5508T	5 1/2 x 8	C-0808T	8 x 8	C-1414F	14 x 14	C-1418B	14 x 18	C-1818B	18 x 18
C-6510T	6 1/2 x 10	C-0910T	9 x 10	C-1515F	15 x 15	C-1420B	14 x 20	C-1820B	18 x 20
C-0608T	6 x 8	C-1012T	10 x 12	C-1616F	16 x 16	C-1422B	14 x 22	C-1822B	18 x 22
C-0710T	7 x 10	C-1113T	11 x 13	C-1618F	16 x 18	C-1424B	14 x 24	C-1824B	18 x 24
C-0812T	8 x 12	C-1214T	12 x 14	C-1818F	18 x 18	C-1426B	14 x 26	C-1826B	18 x 26
C-0913T	9 x 13	C-1315T	13 x 15	All floor toms include 9020 Mounting Brackets and legs		C-1618B	16 x 18	C-2020B	20 x 20
C-1014T	10 x 14	C-1416T	14 x 16			C-1620B	16 x 20	C-2222B	22 x 22
MODEL	SIZE	MODEL	SIZE			C-1622B	16 x 22	C-2424B	24 x 24
C-0708T	7 x 8	C-0908T	9 x 8			C-1624B	16 x 24		
C-0810T	8 x 10	C-1010T	10 x 10			All bass drums include heavy duty fold down spurs. To add tom mounting plate you must order the G4945MT with your drum.			
C-0912T	9 x 12	C-1212T	12 x 12						
C-1013T	10 x 13	C-1313T	13 x 13						
C-1114T	11 x 14	C-1414T	14 x 14						
C-1215T	12 x 15	C-1515T	15 x 15						
C-1316T	13 x 16	C-1616T	16 x 16						

USA Maple Finishes



USA MAPLE DRUM SIZES

USA Maple Toms		USA Maple Floor Toms		USA Maple Bass Drums		USA Maple Shell Packs		
MODEL	SIZE	MODEL	SIZE	MODEL	SIZE	MODEL	BASS DRUM	TOMS
UD-0608T	6 x 8	UD-1414F	14 x 14	UD-1618B	16 x 18	UD-S683	16 x 18	8 x 12 Tom, 14 x 14 Floor Tom
UD-0708T	7 x 8	UD-1616F	16 x 16	UD-1620B	16 x 20	UD-S604	16 x 20	7 x 10, 8 x 12 Toms, 14 x 14 Floor Tom
UD-0710T	7 x 10	All floor toms include 9020 Mounting Brackets and legs		UD-1820B	18 x 20	UD-S824	18 x 22	8 x 10, 9 x 12, 11 x 14 Toms
UD-0810T	8 x 10			UD-1822B	18 x 22	All bass drums include heavy duty fold down spurs. To add tom mounting plate you must order the G4945MT with your drum.		
UD-0812T	8 x 12			UD-1824B	18 x 24			
UD-0912T	9 x 12							
UD-1114T	11 x 14							
UD-1316T	13 x 16							

Renown Maple Shell Packs			
MODEL	BASS DRUM	TOMS	SNARE
RM-F824*	18 x 22	8 x 10, 9 x 12, 11 x 14 Toms	None
RM-F825*	18 x 22	8 x 10, 9 x 12, 11 x 14 Toms	5 x 14

*All Shell Packs include necessary tom holders

RENOWN MAPLE ADD-ON DRUMS

Mounted Toms w/ GTS and 9020 Bracket	
MODEL	SIZE
RM-0708T	7 x 8
RM-1316T	13 x 16

Floor Toms w/ Legs	
MODEL	SIZE
RM-1616F	16 x 16

Bass Drums w/ Mounting Plate	
MODEL	SIZE
RM-1820B	18 x 20
RM-1822B	18 x 22

Renown Maple Finishes



AB
Autumn Burst



CB
Cherry Burst



CS
Champagne Silk



MP
Magenta Purple



PB
Piano Black



RC
Red Cherry



BL
Deep Blue



DA
Deep Amber

Catalina Birch Shell Packs			
MODEL	BASS DRUM	TOMS	SNARE
CA-F825*	18 x 22	8 x 10, 9 x 12, 11 x 14 Toms	5 x 14
CA-S825*	18 x 22	9 x 12, 10 x 13 Toms, 16 x 16 Floor Tom	5 x 14
CA-S605*	16 x 20	8 x 10, 9 x 12 Toms, 14 x 14 Floor Tom	5 x 14

*All Shell Packs include necessary tom holders

CATALINA BIRCH ADD-ON DRUMS

Mounted Toms w/ GTS and 9020 Bracket	
MODEL	SIZE
CA-0708T	7 x 8
CA-0810T	8 x 10
CA-1013T	10 x 13
CA-1114T	11 x 14
CA-1316T	13 x 16

Floor Toms w/ Legs	
MODEL	SIZE
CA-1414F	14 x 14
CA-1616F	16 x 16
CA-1618F	16 x 18

Bass Drums w/ Mounting Plate	
MODEL	SIZE
CA-1620B	16 x 20
CA-1822B	18 x 22

Catalina Birch Finishes



VB
Vintage Burst



DW
Dark Walnut



CB
Caribbean Blue



RC
Red Cherry

Catalina Club Shell Packs			
MODEL	BASS DRUM	TOMS	SNARE
CA-S684*	16 x 18	8 x 12 Tom, 14 x 14 Floor Tom	5 x 14
CA-S665*	16 x 16	6 x 8, 7 x 10 Toms, 13 x 13 Floor Tom	5 x 12

*All Shell Packs include necessary tom holders

Catalina Club Finishes



WP
White Marine



BP
Black Marine



SS
Silver Sparkle

Blackhawk Shell Packs			
MODEL	BASS DRUM	TOMS	SNARE
BH-F625*	16 x 22	8 x 10, 9 x 12, 11 x 14 Toms	5 x 14
BH-F625*	16 x 22	9 x 12, 10 x 13 Toms, 16 x 16 Floor Tom	5 x 14

*All Shell Packs include necessary tom holders

BLACKHAWK ADD-ON DRUMS

Mounted Toms w/ GTS and 9020 Bracket	
MODEL	SIZE
BH-0708T	7 x 8
BH-0810T	8 x 10
BH-1013T	10 x 13
BH-1316T	13 x 16

Floor Toms w/ Legs	
MODEL	SIZE
BH-1414F	14 x 14
BH-1616F	16 x 16

Bass Drums w/ Mounting Plate	
MODEL	SIZE
BH-1622B	16 x 22

Blackhawk Finishes



LB
Liquid Black



WR
Wine Red



BM
Blue Metallic

Due to the nature of the printed page, all colors and finishes shown are intended as a guide only and may vary slightly in actual appearance. Other configurations and or colors may be available. Contact your local Gretsch dealer or distributor for additional options.



Jay Bellerose
Beck

Denny Seiwell
Paul McCartney & Wings

Van Romaine
Enrique Iglesias/Steve Morse

John Kamoosi
Reach 434

Mark Schulman
Cher

Wesley Pryor
Mark Chesnutt

Charlie Watts
The Rolling Stones

David Northrup
Travis Tritt

Tommy Wells
Independent/Studio

Jack Gavin
Nashville Touring Pro

Pat McDonald
Charlie Daniels Band

Alvino Bennett
Bryan Ferry/Robin Trower

Gregg Stocki
Marty Stuart



Gibraltar

Scott Savage
Jaci Velasquez/Chris Rice

Nate Wood
Independent

Ian Browne
Matthew Good Band

Bruce Gary
The Knack

Brandon Young
Noise Ratchet

David Huff
Independent/Producer

Casey Trafton
IHrOnE

Artists Not Pictured:

Bill Rieflin - REM • Raymond Boyd - Michael W. Smith
Debbi Peterson - The Bangles • Johnny Friday - Natalie Cole
Nathan Pedersen - I-4 • Terry Silverlight - Independent/Studio
Jimmie Fadden - Nitty Gritty Dirt Band • D.J. Fontana - Elvis Presley
Paul Goldberg - Independent/Studio