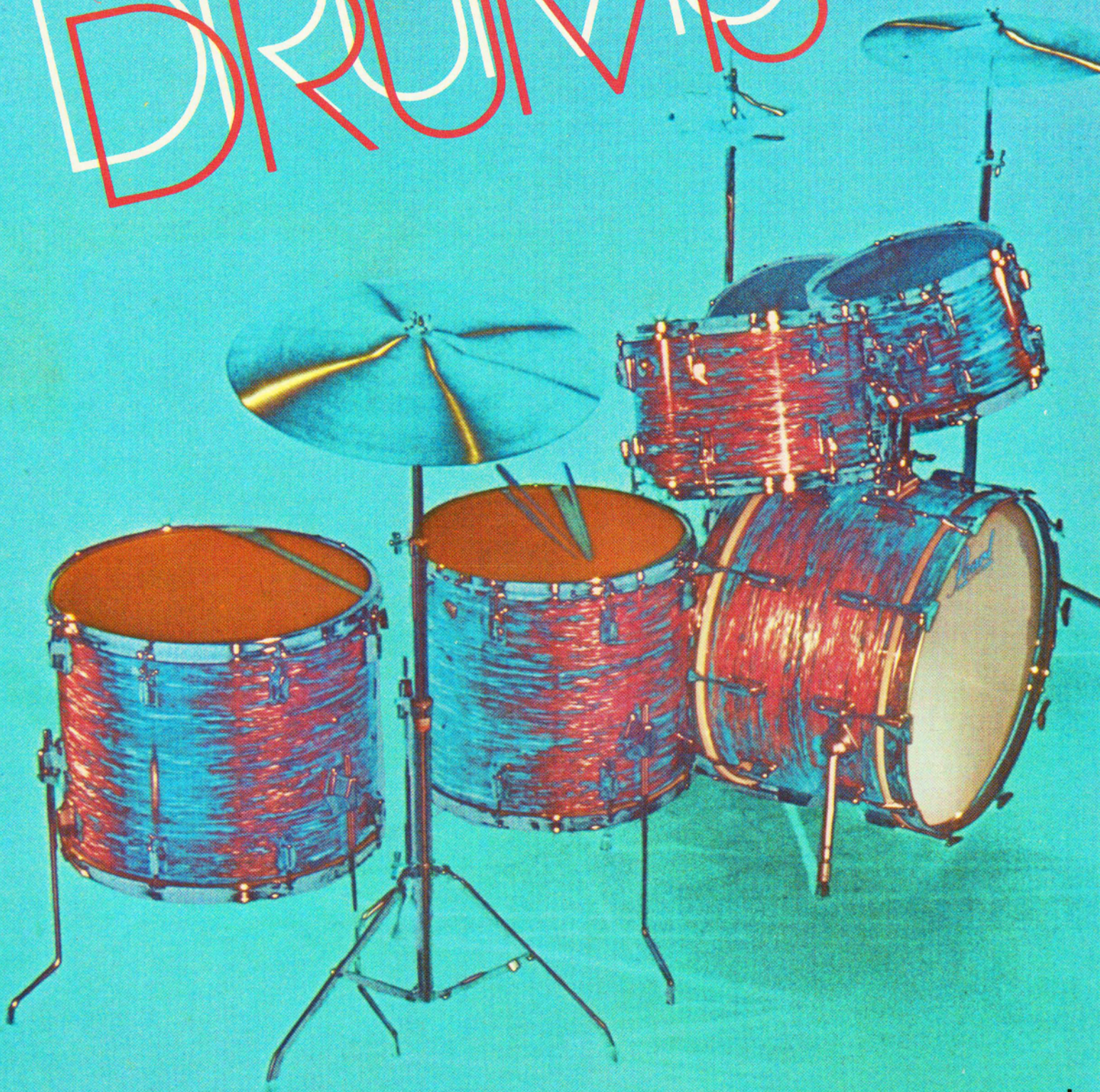


DRUMS



by pearl

Artist Series

SOUND! Today's drummers demand many different sounds from their instruments. Only in the Pearl Artist series will they find the capacity for power, crispness and bite with an instantaneous response covering the entire dynamic range. The secret is in the shells. Layer upon layer of fiberglass is wrapped around a perfect shaped circular mold ending at 3/16 of an inch in thickness with a consistent density. No soft spots, such as those found in shells made of wood. The extremely hard and smooth inside surface produces the ultimate in tone production with less effort required by the player to produce any degree of loudness he needs.

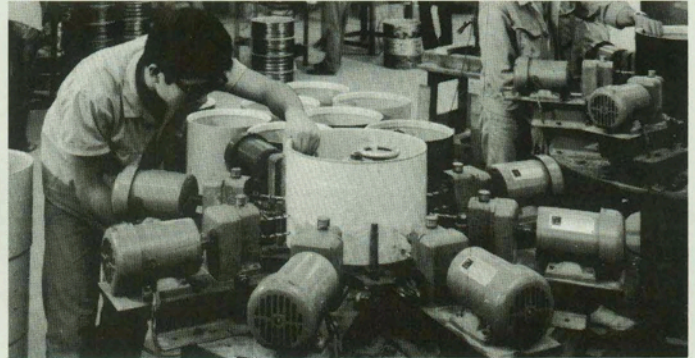
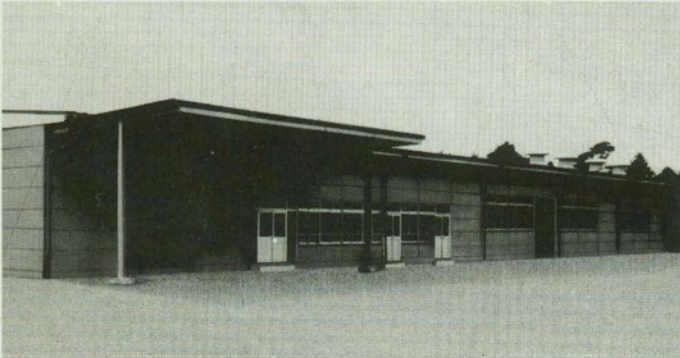
Professional Series

A different sound...although preferred by many professional players is accomplished through the unique manufacturing process of applying a 1/32 of an inch layer of fiberglass inside a 9 ply wood shell. This produces the hard inner surface so necessary for instantaneous response yet allows the sound absorbing qualities of wood to alter the

HARDWARE! Years in development, the stands, pedals, spurs and tom tom holders featured with the Pearl Artist series represent the ultimate in engineering and manufacturing accomplishments. Such features as: nylon bushings on all height and adjustment pressure points—"adjust-while-playing" spring tension on the pedals—sturdy, separate, fully adjustable holders for each mounted tom tom...all spell quality and durability complementing the finest sounding drums on the market.

tone ever so slightly. A unique concept and a sound you must hear. The 9 ply shell with the additional layer of fiberglass lining the inside makes these drums most durable.

The hardware is the same special deluxe type used on the Artist series of all fiberglass shell outfits.



(Top photo) View of new pearl assembly plant and office
(Lower) Pearl drum assembly conveyor system

(Top photo) Pearl drum shell drilling department
(Lower) Pearl packing department

Guarantee

EXCLUSIVE "5-YEAR GUARANTEE" ON PEARL FIBERGLASS SHELLS

The shells on the Pearl Artist outfits are guaranteed a full 5 years against warpage and breakage through normal use.
ALL PEARL products are guaranteed to be of high quality and free of any manufacturing defects.

Distributed exclusively by:

Chicago Musical Instrument Company, 7373 N. Cicero Avenue, Lincolnwood, Illinois 60646

In the West contact:

L. D. Heater Music Company, 10300 S.W. Allen Blvd., Beaverton, Oregon 97005, Phone: (503) 646-8121

deluxe

jazz rock



Model W-5 Deluxe. Traditional wood sound in the most popular sizes and finishes. Durable nine-ply wood shells are specially sealed for extra projection. Pearl's professional double tom mount and brackets deliver the dependability required by all professional players. Improved Deluxe series stands are constructed with many of the exclusive features found on Pearl's professional hardware.

Quality Features: True nine-ply wood shells ■ Shell interiors sealed for extra projection ■ Available in Jet Black, Pure White and Metallic Silver ■ Remo Sound Master Heads ■ 10 Lug Snare Drum ■ Pearl's legendary Professional Model 716 Double Tom Mount

Outfit includes: W-222 (14x22") Bass Drum with 729 Spurs and 716T Double Tom Holder ■ D4514 (5x14") Snare

Drum—10 lugs, chrome plated ■ W-212 (8x12") Tom Tom ■ W-213 (9x13") Tom Tom ■ W-216 (16x16") Floor Tom ■ 703 (2) Deluxe Cymbal Stands ■ 805 Deluxe Hi-Hat Stand ■ 706 Deluxe Snare Stand ■ 709 Deluxe Bass Drum Pedal

Cymbals not included

Pearl[®]
DRUMS

Another Quality Product from Norlin
7373 N. Cicero Avenue, Lincolnwood, Illinois 60646
In Canada: 51 Nantucket Boulevard, Scarborough, Ontario

professional jazz rock



Model W-5 Pro. Today's most popular sizes and colors in the traditional wood sound. Durable nine-ply wood shells are specially sealed for extra projection. Same professional hardware on Pearl's F and FW sets with nylon bushings for no-slip, no mar, heavy-duty performance that have made Pearl the choice of today's top players.

Quality Features: True nine-ply wood shells ■ Shell interiors sealed for extra projection ■ Available in Jet Black, Pure White and Metallic Silver ■ Remo Sound Master Heads ■ 10 Lug Snare Drum ■ Pearl's legendary 800 Series Professional Hardware—Double Tom Mount, Bass Drum Spurs and all stands.

Outfit includes: W-222 (14x22") Bass Drum with 786 Spurs and 716T Double Tom Holder mounted ■ D4514 (5x14") Snare Drum—10 lugs, chrome plated ■ W-212 (8x12") Tom Tom ■ W-213 (9x13") Tom Tom ■ W-216 (16x16") Floor Tom ■ 803 (2) Professional Cymbal Stands ■ 800 Professional Hi-Hat Stand ■ 806 Professional Snare Stand ■ 810 Professional Bass Drum Pedal
Cymbals not included

Pearl[®]
DRUMS

Another Quality Product from Norlin
7373 N. Cicero Avenue, Lincolnwood, Illinois 60646
In Canada: 51 Nantucket Boulevard, Scarborough, Ontario



Pearl ARTIST MODEL F-1S

QUALITY FEATURES :

- 6 Piece Fiberglass shell outfit offers a new sound and outstanding durability.
- Rimshot counterhoops especially designed to guarantee perfect tension and sound.
- Newly designed snare drum strainer for ultra fine adjustments.
- Newly designed, fully adjustable spurs prevent wobble and creep. Fold compactly against bass drum for portability.
- Sturdy, fully adjustable individual tom tom holders.
- Nylon bushings on all height adjustable stands prevent slipping, wobble, and marring of the tubes.
- Newly designed micro-adjustable cymbal tilters will not slip.
- Adjust-while-playing top mounted tension springs on hi hat and bass drum pedals. Built in no-creep spurs on both pedals.

OUTFIT INCLUDES :

- F222** 14x22 Bass Drum with inner felt muffler
716 New double Tom Tom holder, mounted
717 New deluxe spurs, mounted
B4514 5x14 Brass Shell Snare Drum, ten lugs, chrome finish
F213 9x13 Tom Tom with inner tone control
F214 10x14 Tom Tom with inner tone control
F216 16x16 Tom Tom with inner tone control and bent shaped legs
F218 16x18 Tom Tom with inner tone control and bent shaped legs
800 New Professional Hi Hat Stand
803 New Professional Cymbal Stands (2)
806 New Professional Snare Drum Stand
810 New Professional Bass Drum Pedal
726 Drum Sticks-select quality (pair)

**FIBERGLASS SHELLS
 HEAVILY CHROME PLATED HARDWARE
 CYMBALS NOT INCLUDED**

DISTRIBUTED EXCLUSIVELY BY:

CHICAGO MUSICAL INSTRUMENT CO.
 7373 North Cicero Ave.
 Lincolnwood, Illinois 60646

SEE PRICE LIST FOR AVAILABLE COLORS

In the West
L. D. HEATER MUSIC CO.
 10300 S.W. Allen Blvd.
 Beaverton, Oregon 97005
 Phone: (503) 646-8121



Pearl ARTIST MODEL F-2

QUALITY FEATURES:

- 5 Piece, Fiberglass shell outfit offers a new sound and outstanding durability.
- Rimshot counterhoops especially designed to guarantee perfect tension and sound.
- Newly designed snare drum strainer for ultra fine adjustments.
- Newly designed, fully adjustable spurs prevent wobble and creep. Fold compactly against bass drum for portability.
- Sturdy, fully adjustable individual tom tom holders.
- Nylon bushings on all height adjustable stands prevent slipping, wobble, and marring of the tubes.
- Newly designed micro-adjustable cymbal tilters will not slip.
- Adjust-while-playing top mounted tension springs on hi hat and bass drum pedals. Built in no-creep spurs on both pedals.

OUTFIT INCLUDES:

- F222** 14x22 Bass Drum with inner felt muffler
- 716** New double Tom Tom holder, mounted
- 717** New deluxe spurs, mounted
- B4514** 5x14 Brass Shell Snare Drum, ten lugs, chrome finish
- F212** 8x12 Tom Tom with inner tone control
- F213** 9x13 Tom Tom with inner tone control
- F216** 16x16 Tom Tom with inner tone control and bent shaped legs
- 800** New Professional Hi Hat Stand
- 803** New Professional Cymbal Stands (2)
- 806** New Professional Snare Drum Stand
- 810** New Professional Bass Drum Pedal
- 726** Drum Sticks-select quality (pair)

**FIBERGLASS SHELLS
HEAVILY CHROME PLATED HARDWARE
CYMBALS NOT INCLUDED**

DISTRIBUTED EXCLUSIVELY BY:

CHICAGO MUSICAL INSTRUMENT CO.
7373 North Cicero Ave.
Lincolnwood, Illinois 60646

SEE PRICE LIST FOR AVAILABLE COLORS

In the West
L. D. HEATER MUSIC CO.
10300 S.W. Allen Blvd.
Beaverton, Oregon 97005
Phone: (503) 646-8121



Pearl PROFESSIONAL MODEL FW-1S

QUALITY FEATURES :

- 6 Piece, 9 ply wood shell outfit with FIBERGLASS LINING offers a new sound and outstanding durability.
- Rimshot counterhoops especially designed to guarantee perfect tension and sound.
- Newly designed snare drum strainer for ultra fine adjustments.
- Newly designed, fully adjustable spurs prevent wobble and creep. Fold Compactly against bass drum for portability.
- Sturdy, fully adjustable individual tom tom holders.
- Nylon bushings on all height adjustable stands prevent slipping, wobble, and marring of the tubes.
- Newly designed micro-adjustable cymbal tilters will not slip.
- Adjust-while-playing top mounted tension springs on hi hat and bass drum pedals. Built in no-creep spurs on both pedals.

OUTFIT INCLUDES :

- FW222** 14x22 Bass Drum with inner felt muffler
716 New double Tom Tom holder, mounted
717 New deluxe spurs, mounted
D4514 5x14 Metal Snare Drum, ten lugs, chrome finish
FW213 9x13 Tom Tom with inner tone control
FW214 10x14 Tom Tom with inner tone control
FW216 16x16 Tom Tom with inner tone control and bent shaped legs
FW218 16x18 Tom Tom with inner tone control and bent shaped legs
800 New Professional Hi Hat Stand
803 New Professional Cymbal Stands (2)
806 New Professional Snare Drum Stand
810 New Professional Bass Drum Pedal
726 Drum Sticks-select quality (pair)

**FIBERGLASS LINED 9 PLY WOOD SHELLS
 HEAVILY CHROME PLATED HARDWARE
 CYMBALS NOT INCLUDED**

DISTRIBUTED EXCLUSIVELY BY:

CHICAGO MUSICAL INSTRUMENT CO.
 7373 North Cicero Ave.
 Lincolnwood, Illinois 60646

SEE PRICE LIST FOR AVAILABLE COLORS

In the West
L. D. HEATER MUSIC CO.
 10300 S.W. Allen Blvd.
 Beaverton, Oregon 97005
 Phone: (503) 646-8121



Pearl PROFESSIONAL MODEL FW-2

QUALITY FEATURES:

- 5 Piece, 9 ply wood shell outfit with FIBERGLASS LINING offers a new sound and outstanding durability.
- Rimshot counterhoops especially designed to guarantee perfect tension and sound.
- Newly designed snare drum strainer for ultra fine adjustments.
- Newly designed, fully adjustable spurs prevent wobble and creep. Fold compactly against bass drum for portability.
- Sturdy, fully adjustable individual tom tom holders.
- Nylon bushings on all height adjustable stands prevent slipping, wobble, and marring of the tubes.
- Newly designed micro-adjustable cymbal tilters will not slip.
- Adjust-while-playing top mounted tension springs on hi hat and bass drum pedals. Built in no-creep spurs on both pedals.

OUTFIT INCLUDES:

- FW222** 14x22 Bass Drum with inner felt muffler
- 716** New double Tom Tom holder, mounted
- 717** New deluxe spurs, mounted
- D4514** 5x14 Metal Snare Drum, ten lugs, chrome finish
- FW212** 8x12 Tom Tom with inner tone control
- FW213** 9x13 Tom Tom with inner tone control
- FW216** 16x16 Tom Tom with inner tone control and bent shaped legs
- 800** New Professional Hi Hat Stand
- 803** New Professional Cymbal Stands (2)
- 806** New Professional Snare Drum Stand
- 810** New Professional Bass Drum Pedal
- 726** Drum Sticks-select quality (pair)

**FIBERGLASS LINED 9 PLY WOOD SHELLS
HEAVILY CHROME PLATED HARDWARE
CYMBALS NOT INCLUDED**

DISTRIBUTED EXCLUSIVELY BY:

CHICAGO MUSICAL INSTRUMENT CO.
7373 North Cicero Ave.
Lincolnwood, Illinois 60646

SEE PRICE LIST FOR AVAILABLE COLORS

In the West
L. D. HEATER MUSIC CO.
10300 S.W. Allen Blvd.
Beaverton, Oregon 97005
Phone: (503) 646-8121

Pearl DELUXE MODEL NC-5DL

QUALITY FEATURES:

- 5 Piece outfit with true 9 ply wood shells.
- Rimshot counter hoops especially designed to guarantee perfect tension and sound.
- Snare drum strainer is a new horizontal switch-type for ultra fine height adjustments.
- Bass drum spurs are telescopic and rubber-tipped for stability and quick assembly.
- Tom Tom holder is the new "Professional" type, extra heavy duty, completely independent, adjusting quickly to your exact position requirements.
- Cymbal holders are equipped with tilters and positive locking height adjusters.
- Tension casings are brilliant diamond-cut self-aligning lugs.
- Deluxe Hi Hat stand features bottom cymbal tilter and positive chain pull.
- Sturdy tripod base throne with heavily padded seat.

OUTFIT INCLUDES:

- NCD122** 14x22 Bass Drum, 16 lugs, metal counter hoops, with:
- 732** Inner felt muffler
- 715** Height adjustable cymbal holder, mounted
- 730** Professional heavy duty double Tom Tom holder, mounted
- 730** Telescopic spurs, mounted
- 4614** 5½x14 metal snare drum, 8 lugs with inner tone control
- NC112** 8x12 Tom Tom with new tom bracket and inner tone control
- NC113** 9x13 Tom Tom with new tom bracket and inner tone control
- NC116** 16x16 Tom Tom with inner tone control and bent shaped legs
- 805** Hi Hat Stand
- 703** Cymbal Stand
- 706** Snare Drum Stand
- 709** Bass Drum Pedal
- 750** Drummers Throne
- 722B** Wire Brushes (pair)
- 725** Drum Sticks (pair)

**HEAVILY CHROME PLATED HARDWARE
CYMBALS NOT INCLUDED
REMO "SOUND MASTER" HEADS**

DISTRIBUTED EXCLUSIVELY BY:

CHICAGO MUSICAL INSTRUMENT CO.

7373 North Cicero Ave.
Lincolnwood, Illinois 60646

In the West

L. D. HEATER MUSIC CO.

10300 S.W. Allen Blvd.
Beaverton, Oregon 97005
Phone: (503) 646-8121

SEE PRICE LIST FOR AVAILABLE COLORS



Pearl DELUXE MODEL NC-4DL

QUALITY FEATURES :

- 4 Piece outfit with true 9 ply wood shells.
- Rimshot counter hoops especially designed to guarantee perfect tension and sound.
- Snare drum strainer is a new horizontal switch-type for ultra fine height adjustments.
- Bass drum spurs are telescopic and rubber-tipped for stability and quick assembly.
- Tom Tom holder is the new "Free Adjustable" type, heavy duty, adjusting quickly to your exact position requirements.
- Cymbal holders are equipped with tilters and positive locking height adjusters.
- Tension casings are brilliant diamond-cut self-aligning lugs.
- Deluxe Hi Hat stand features bottom cymbal tilter and positive chain pull.

OUTFIT INCLUDES :

- NCD122** 14x22 Bass Drum, 16 lugs, metal Counter-hoops, with:
- 732** Inner felt muffler
 - 715** Height adjustable cymbal holder, mounted
 - 718** Free adjustable Tom Tom holder, mounted
 - 730** Telescopic spurs, mounted
- 4614** 5½x14 Metal snare drum, 8 lugs with inner tone control
- NC113** 9x13 Tom Tom with inner tone control
NC116 16x16 Tom Tom with inner tone control and bent shaped legs
- 805** Deluxe Hi Hat Stand
 - 705** Snare Stand
 - 709** Bass drum pedal
 - 725** Drum sticks (pair)
 - 722** Wire brushes (pair)

**HEAVILY CHROME PLATED HARDWARE
CYMBALS NOT INCLUDED**

DISTRIBUTED EXCLUSIVELY BY:

CHICAGO MUSICAL INSTRUMENT CO.
7373 North Cicero Ave.
Lincolnwood, Illinois 60646

SEE PRICE LIST FOR AVAILABLE COLORS

In the West
L. D. HEATER MUSIC CO.
10300 S.W. Allen Blvd.
Beaverton, Oregon 97005
Phone: (503) 646-8121



Pearl DELUXE MODEL NC-4

QUALITY FEATURES:

- 4 Piece outfit with true 9 ply wood shells.
- Rimshot counter hoops especially designed to guarantee perfect tension and sound.
- Snare drum strainer is a new horizontal switch-type for ultra fine height adjustments.
- Bass drum spurs are telescopic and rubber-tipped for stability and quick assembly.
- Tom Tom holder is the new "Free Adjustable" type, heavy duty, adjusting quickly to your exact position requirements.
- Cymbal holders are equipped with tilters and positive locking height adjusters.
- Tension casings are brilliant diamond-cut self-aligning lugs.

OUTFIT INCLUDES:

- NC120** 14x20 Bass Drum, 12 lugs, metal Counter-hoops, with:
- 732** Inner felt muffler
 - 715** Height adjustable cymbal holder, mounted
 - 718** Free adjustable Tom Tom holder, mounted
 - 729** Telescopic spurs, mounted
- 4614** 5½x14 Metal snare drum, 8 lugs with inner tone control
- NC112** 8x12 Tom Tom with inner tone control
NC114 14x14 Tom Tom with inner tone control and bent shaped legs
- 705** Snare Stand
 - 709** Bass drum pedal
 - 725** Drum sticks (pair)
 - 722** Wire brushes (pair)

HEAVILY CHROME PLATED HARDWARE

DISTRIBUTED EXCLUSIVELY BY:

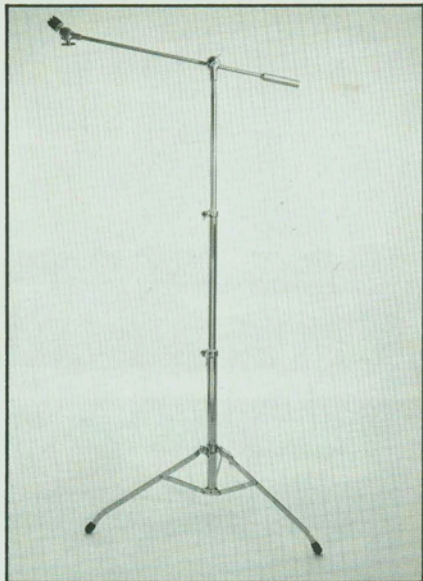
CHICAGO MUSICAL INSTRUMENT CO.
7373 North Cicero Ave.
Lincolnwood, Illinois 60646

In the West
L. D. HEATER MUSIC CO.
10300 S.W. Allen Blvd.
Beaverton, Oregon 97005
Phone: (503) 646-8121

SEE PRICE LIST FOR AVAILABLE COLORS



NEW! PEARL STANDS AND THRONES



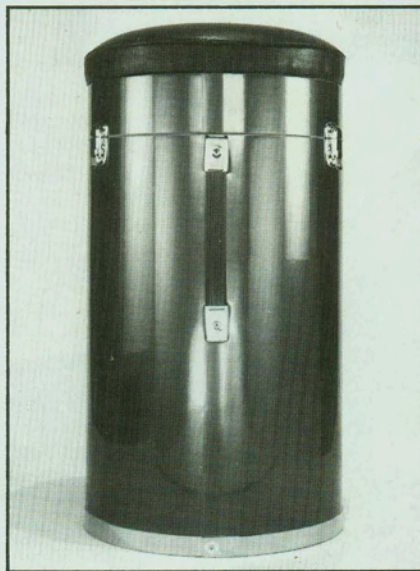
MODEL 803BS \$55.00
 Boom version of Pearl's professional cymbal stand. Heavily chrome plated, posi-friction locks, heavy counter-balance weight, wide stance legs, fully adjustable tilter.



MODEL 803BD \$65.00
 A real heavy-weight! Double braced wide stance legs, adjustable knurled heavy counter-balance weight, posi-friction locks, fully adjustable tilter.



MODEL 850N \$70.00
 A comfortable, thickly padded seat tops an extremely sturdy base with double braced legs. Posi-friction lock for height adjustment from 19" low to 30" high.



MODEL 855B \$150.00
 A virtually indestructible phenolic shell barrel shape throne with soft padded 13" removable seat section, sealed bottom to hold lots of gear, and three clasps mounted out of the way. 25" high. Please specify color.

Pearl[®]

Another Quality Product from Norlin
 7373 N. Cicero Ave., Lincolnwood, Illinois 60646

Norlin[™]

pearl parts kit

METAL CABINET



Over \$300.00 worth of Pearl Parts: Selected to sell and service, comes with complete parts listing including quantity, parts number, description and retail price.

PK-1 Dealer Net \$140.00

CABINET IS FREE

**LIST CAN BE
USED TO KEEP
PARTS INVENTORY
LEVELS/**



METAL DIVIDERS

Pearl
DRUMS

Another Quality Product from Norlin 7373 No. Cicero Ave., Lincolnwood, Ill. 60646

Norlin®

PEARL DRUMS

June 1972
Retail Price List

OUTFITS

MODEL		SUGGESTED LIST PRICE
NC-4	<i>Four Piece Outfit</i> Colors: Blue Spk. Red Spk. Gold Grain	\$219.50
NC-4DL	<i>Four Piece Outfit</i> Colors: Blue Spk. Red Spk. Gold Grain Blue Oyster Walnut Vinyl	269.50
NC-5DL	<i>Five Piece Outfit</i> Colors: Blue Spk. Red Spk. Gold Grain Walnut Vinyl Blue Oyster	339.50
FW-1S	<i>Six Piece Outfit</i> Colors: Gold Oyster Red Oyster Blue Oyster Walnut Vinyl	589.50
FW-2	<i>Five Piece Outfit</i> Colors: Gold Oyster Red Oyster Blue Oyster Walnut Vinyl	489.50
F-1S	<i>Six Piece Outfit</i> Colors: Gold Satin Red Satin Blue Satin Silver Satin	695.00
F-2	<i>Five Piece Outfit</i> Colors: Gold Satin Red Satin Blue Satin Silver Satin	589.50

SNARE DRUM KITS

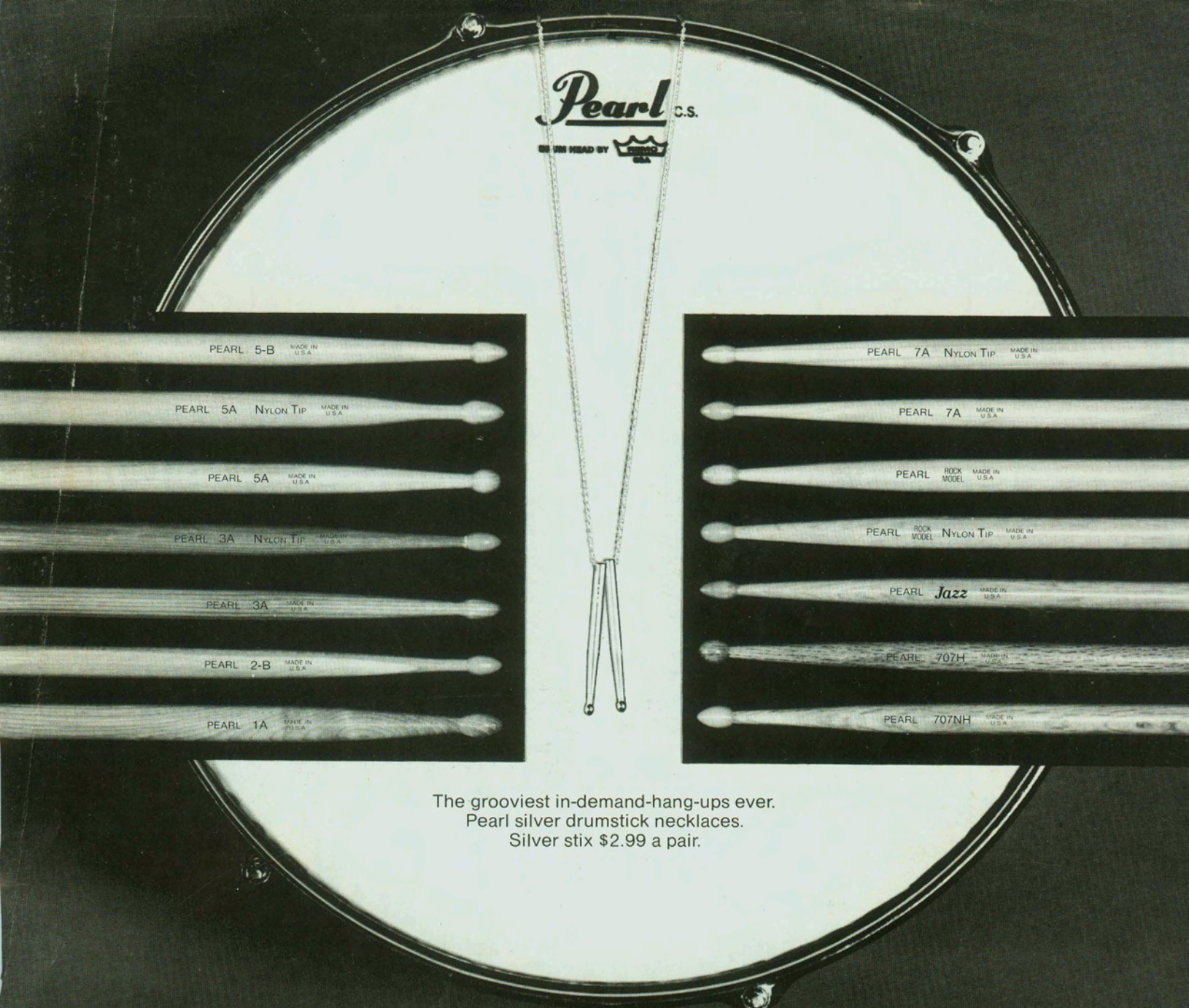
NC-775	<i>(Retail Value \$80.25)</i>	75.00
Contains:	1-4614 Chrome Snare Drum 1-479 Kit Case 1-704B Snare Drum Stand 1-1601 Practice Pad 1 pair Drum Sticks	
FW-451	<i>(Retail Value \$120.65)</i>	99.50
Contains:	1-D4514 Chrome Snare Drum 1-479 Kit Case 1-706 Snare Drum Stand 1 Lyle Music Stand 1-1601 Practice Pad 1 pair Drum Sticks	

Distributed exclusively by:

**CHICAGO MUSICAL
INSTRUMENT COMPANY**
7373 North Cicero Avenue
Lincolnwood, Illinois 60466

In the West contact:
L. D. HEATER MUSIC CO.
10300 S. W. Allen Boulevard
Beaverton, Oregon 97005

Pearl c.s.
 BE THE HEAD BY



The grooviest in-demand-hang-ups ever.
 Pearl silver drumstick necklaces.
 Silver stix \$2.99 a pair.

NEW! PEARL HICKORY DRUM STICKS

The finest select grained hickory available is used in Pearl's new line of sticks to give you a complete selection of woods to meet your specific playing requirements.

- 1AH—Hickory wood tip 3.00/pr
- 3AH—Hickory wood tip 3.00/pr
- 707H—Hickory wood tip 3.00/pr
- 5AH—Hickory wood tip 3.00/pr
- 7AH—Hickory wood tip 3.00/pr
- 2BH—Hickory wood tip 3.00/pr
- 5BH—Hickory wood tip 3.00/pr

- Jazz-H—Hickory wood tip 3.00/pr
- Rock-H (4A)—Hickory wood tip 3.00/pr
- 707NH—Nylon tip 3.50/pr
- 5ANH—Nylon tip 3.50/pr
- 7ANH—Nylon tip 3.50/pr
- Jazz-NH—Nylon tip 3.50/pr
- Rock-NH—Nylon tip 3.50/pr

YOUR NAME

An ideal way to keep your store name in front of your drum stick customers every day!

Pearl will manufacture for you any of the above models (personalized), or your favorite model (custom/personalized) with either your store name or an individual's name bracketed by the Pearl logo and model number. Name limited to 23 characters.

Model CPW Custom/Personalized Wood Tip	LIST
Model CPWN Custom/Personalized Nylon Tip	\$3.25 a pair
Minimum order either CPW or CPWN—100 pairs. Please specify exact spelling on personalized sticks. Please submit sample of custom/personalized sticks.	\$3.75 a pair