

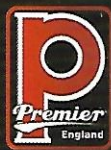
# Premier<sup>®</sup>



Premier<sup>®</sup>

## REBOUND

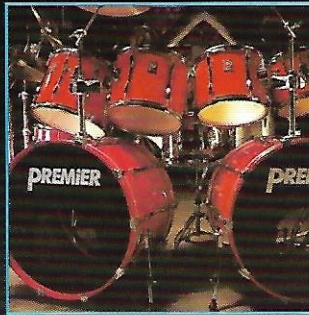
THE PREMIER CATALOGUE



DRUMSET EDITION



# AN UNRIVALLED HISTORY



Serving drummers worldwide since 1922, Premier has remained at the forefront of percussion design and development.

A long established company that is rich in history and tradition, Premier's name has been associated with a wealth of star performers in many musical genres not only at home in England but all over the globe. From the monster set-ups of stadium filling rockers to the compact kits championed by the jazz community, Premier continues to deliver 'must have' instruments.

The vast experience and knowledge gained during this exhilarating journey has given us unrivalled expertise to craft our instruments to the highest standards.

Alongside a proud history within the worlds of Marching and Orchestral instruments, Premier Drumsets have continued to break new ground and provide the very best for players at all levels. Many products and features have become household names in the drumming world and current research and development ensures that this legacy of innovation continues.

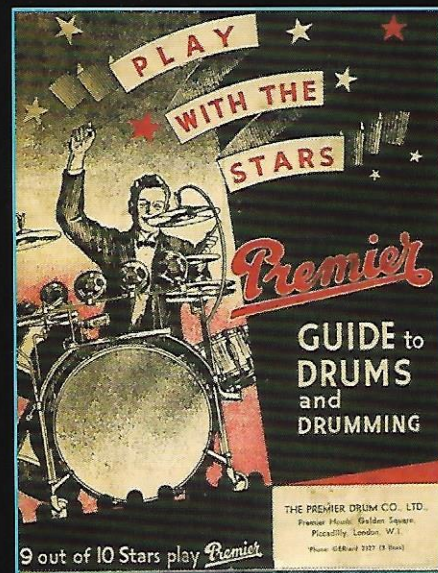
The growing list of leading drummers who endorse Premier not only proves the excellence of our drums on the word-wide stage, but also provides an invaluable source of ideas and inspiration.

Truly one of the most iconic names in music today, you'll find that our sense of pride is infectious. We welcome the demands of today's musicians and extend a warm welcome to members of our ever growing "family" of drummers.

**Premier**  
England

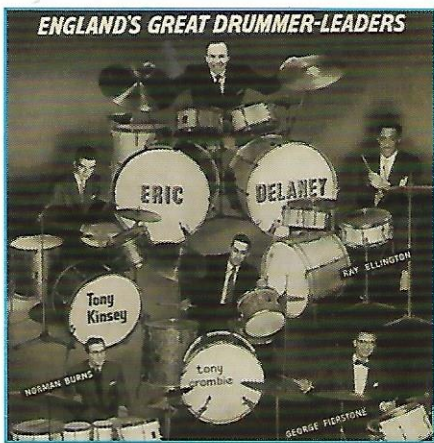
**1920s** At the height of the Jazz age, drum builder George Smith partners pro drummer Albert Della Porta in the launch of Premier, notably in the 'Soho' area of London, the heart of its vibrant live music scene. The Berwick Street factory moves quickly into production of drum kits and portable tuned instruments.

**1930s** Under the sales directorship of Fred Della Porta, Premier further develops its instrument ranges. A shift in the dynamic of entertainment with the one-time rebellious and underground Jazz scene now influencing musical theatre and recordings, the modern drum kit is fast growing in popularity. It's the age of the 'star' and contemporary Premier catalogues proudly declare "Nine out of ten 'ace' drummers use a Premier outfit". 'Ace' Drummers like George Fierstone, Max Abrams, Ray Ellington and Max Bacon an entertainer who's tutor book 'Max On Swing' is still sought after today, are among the leading players at this time. The Console system, an early version of today's drum racks is a popular Premier product seeing use in America with drummers like Chick Webb. Premier's famous entry-level brand Olympic also features during the decade.



**1940s** World War II sees Premier's skills employed in the production of precision-engineered metalwork for the War Office who instigate a move to a new site in Leicester. The latter part of the decade was truly the era of the 'Big-Band' with popular music in the UK heavily influenced by the big stars from America.



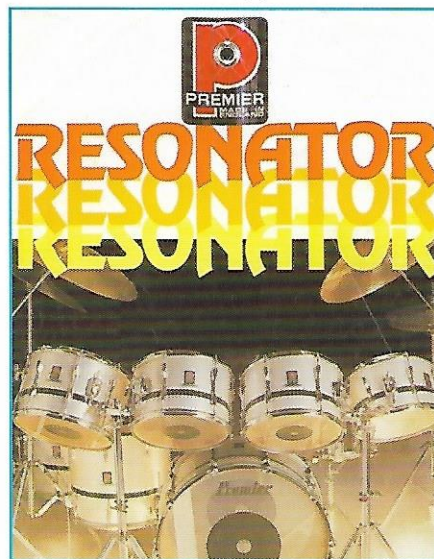


**1950s** Big Band and small group jazz and radio broadcasting are the kingpins of entertainment. Players like Ray Ellington, a band leader and radio celebrity, dominate the airwaves alongside Eric Delaney, Tony Kinsey, Tony Crombie and Norman Burns as the top drummers all proudly playing Premier. Set-ups evolved from the console or 'trap' sets to the smaller neater layouts much more familiar to today's drummer. Great products like the 250 bass drum pedal, Zyn Cymbals, Everplay heads and the hugely prolific 'Lokfast' flush based hardware (the preferred stands of the great Buddy Rich), set Premier aside from its competitors. Many standard drumset features like tilting hi-hat cups and all chromed hardware that drummers take for granted today, were all Premier firsts.



**1960s** With a choice of set-ups and colours never before available, Premier tackled the challenges of meeting the needs of the "beat boom" drummers with a vengeance. The classic simplicity of the new kits graced many a stage and became the benchmark for quality. The neat 4 piece '54' and '58' were in wide demand with Bobby Elliot (Hollies) and the great Keith Moon (The Who) amongst the many leading drummers of the day using these world-beating drums.

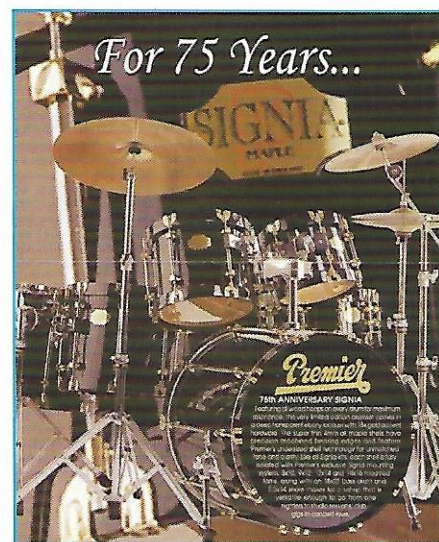
Early appearances by the Beatles see Ringo Starr playing a Mahogany Duroplastic set! Influential American drummers of the bebop era like Kenny Clarke, Art Blakey and Philly Joe Jones chose Premier. Sam Woodyard of the Duke Ellington Orchestra's dramatic double bass drum set will become an influence on drummers for generations to come. The legendary 2000 snare drum was launched in 1966, the culmination of Premier parallel-action snare drum design dating back to the 30s. 1966 also saw Premier receive the Queens Award to Industry further illustrating the scale of production fuelled by this exciting period.



**1970s** The great Kenny Clare was the catalyst behind another radical Premier innovation with the Resonator "shell-within-a-shell" concept. These popular outfits suited many musical styles from jazz trio to stadium rock. In 1976, Premier opens a new purpose built factory in Leicester. 'Punk Rock' explodes on to the UK music scene and sends its shockwave around the world. A fierce nationalistic pride is key to the Punk movement and its leading drummers; Paul Cook (Sex Pistols), Rat Scabies (The Damned) and Rocky Rhythm (Revillos) all play the British-made Premier. As 'Punk' morphs into 'New Wave', new names like Clem Burke (Blondie), John Maher (Buzzcocks), Paul Thompson (Roxy Music), Rick Buckler (The Jam), Billy Docherty (The Undertones), join the more established drummers like Phil Collins, John Coghlan (Status Quo) and Richie Hayward (Little Feat) in Premier's advertising.

**1980s** Elite, Resonator, Soundwave and Club provide endless options for drummers of every style. The new Trilok hardware range and innovative 252 pedal provides more robust and heavy duty options to meet the demands of the heavy rock drummers of the day, though Lokfast hardware remains 'standard issue' for most Jazz drummers. The Project One and Heavy Rock 9 snare drums and even the PowerPak electronic kit punctuated a decade that also saw Premier take the lead in the growing 'value-priced' market with the APK and XPK ranges establishing themselves as true marks of quality. As ever, drummers were the best company ambassadors, with the likes of Carl Palmer (Asia), Rod Morgenstein (Dixie Dregs/Winger), Charlie Morgan (Elton John), Harvey Mason (Session Great) and John Keeble (Spandau Ballet) joining the roster.

**1990s** Premier introduces two hugely successful ranges with Signia and Genista. Premier's 75th anniversary in 1997 was marked in style by a special commemorative set from each. Again the drummers speak volumes Nicko McBrain (Iron Maiden), Brad Wilks (Rage Against The Machine), Philip Selway (Radiohead) to name but a few.



**2000s** Along with Artist Series, Cabria Series and Modern Classic, it's the decade of Premier Series with its numerous specification options and proven performance. These amazing drums are the preferred choice of many contemporary drummers, take the great Steve White (Trio Valore) and Derico Watson (Victor Wooten) for example.



# PREMIER SERIES ELITE

HAND CRAFTED CUSTOM DRUMS

## LOW PROFILE DIE-CAST HOOPS

Focus and reinforce the drumsound at your chosen tuning.



## OPTIMUM SELECTION

DRUMHEADS BY  
REMO USA

Premier's flagship drumset range is the culmination of a production history spanning every key move in modern popular music. Crafted from the highest quality materials, Elite gives you drums as true musical instruments.

Elite's immediate history as a natural development from our Premier Series launched in 2003 has afforded us the ability to correctly assess the needs of today's drummer and present them with

an intelligent and exciting choice. Elite is all about you the drummer!

As standard we fit our new flush fitting ISO mount. A close circumference design which allows close tom placement alongside the well documented sustain, extended tonality and separation that shell mounting allows. Each tom is fitted with a pair of our famous low-profile die-cast hoops bringing a further focus to the drum's tone into the mix as well as a

very high class appearance!

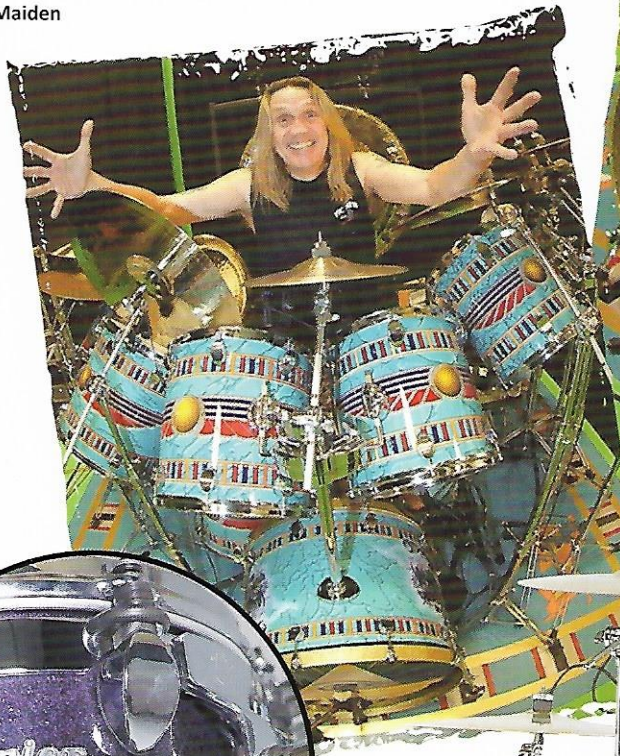
Sound engineers both in recording and live situations have been quick to congratulate us on the great sound of these drums.

Standard workshop fitting of Remo Coated Ambassador heads to toms and snare drums and Powerstroke to the bass drums further compliment the Elite timbre.



"Premier, 'THE ELITE', manufacturer of drums for the most serious drummers out there. Over my wonderful time with Premier I have seen them grow from strength to strength. The new Premier series drums, that I have been using this last tour, are a classic example of quality and care in the manufacture or such a great British product. You can't (well you do don't you) 'BEAT EM'."

Nicko McBrain - Iron Maiden



**FLUSH FITTING ISO MOUNT**

True isolation mounting and improved positioning ability.

**SUPPORTED SHELL**

4mm 4-ply with 4mm 4-ply support hoop shell construction.



**UN-SUPPORTED SHELL**

6mm 6-ply shell construction.




Not reliant upon just one type of drum shell, our use of American maple and Scandinavian birch offer the Elite player detailed control of their own sound. Each shell is undersized by 3mm allowing the head to seat flatter over the bearing edge extending the resultant tone and sustain.

Birch produces very strong mid to top end frequencies and maple is well known for its inherent focus of lower mids. Both 6-ply unsupported and 4-ply with integral

support hoop shells are available. Drummers looking for power and projection or warmth and articulation are well catered for.

Gen-X is our unique offering with a 6-ply shell combining both our carefully chosen birch and maple in a well researched ratio (2-ply birch on the outside and 4-ply maple on the inside) that delivers the key sonic features of the two.






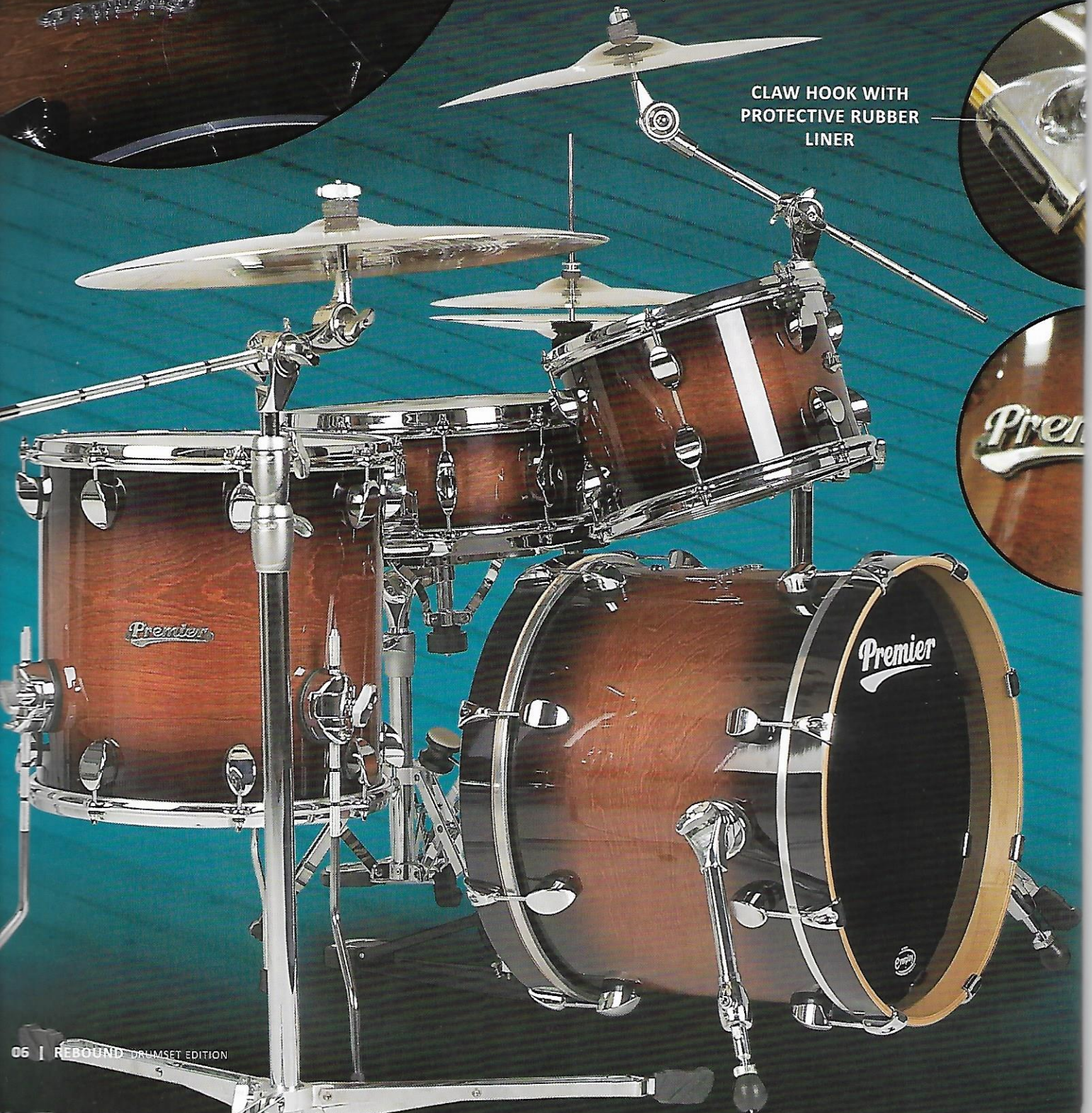
The Premier Series Elite is the ultimate offering for any drummer. We are proud to offer stunning finishes which include vibrant woodgrain lacquers and lustrous sparkles in a combination of even-coat, fade, or burst application and premium quality wraps. Why not opt for a finish identical to that of your favourite drummer or create your own finish? Graphics can be produced as wraps to give your kit a totally one-off and unique feel.

A wide range of proven sizes are available as standard with the option of quick, standard, power or new short stack toms to choose from. All sizes of bass drum are catered for with the option of with or without a tom mount.

Download the order form from [www.premier-percussion.com](http://www.premier-percussion.com) for a full list of customisable options.



CLAW HOOK WITH  
PROTECTIVE RUBBER  
LINER





## Premier Series Elite

Size	Type
12" x 8"	Standard Tom
13" x 9"	Standard Tom
14" x 10"	Standard Tom
16" x 12"	Standard Tom
8" x 7"	Quick Tom
10" x 8"	Quick Tom
12" x 9"	Quick Tom
13" x 10"	Quick Tom
14" x 11"	Quick Tom
16" x 13"	Quick Tom

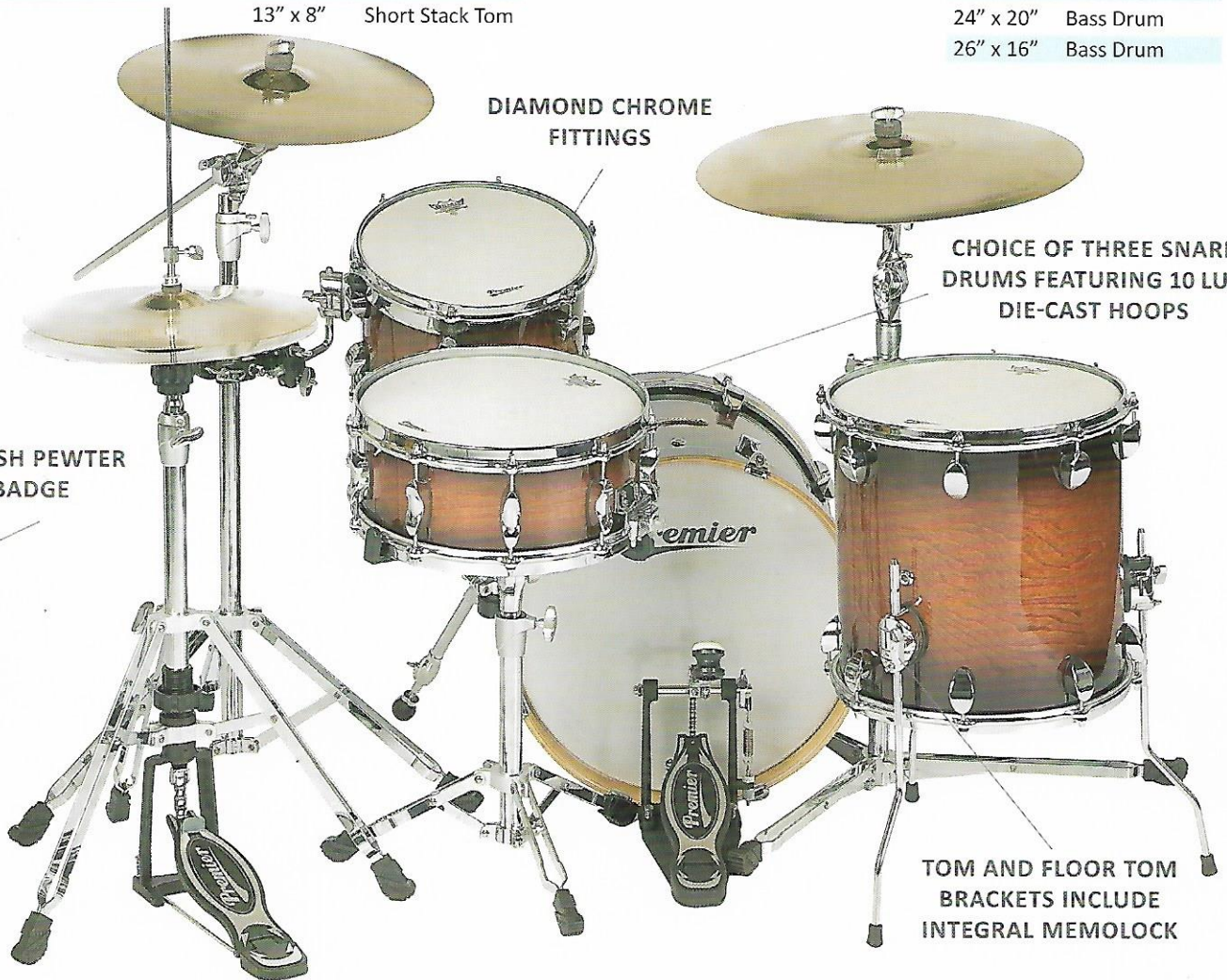
Size	Type
8" x 8"	Power Tom
10" x 9"	Power Tom
12" x 10"	Power Tom
13" x 11"	Power Tom
14" x 12"	Power Tom
15" x 13"	Power Tom
16" x 14"	Power Tom
8" x 5"	Short Stack Tom
10" x 6"	Short Stack Tom
12" x 7"	Short Stack Tom
13" x 8"	Short Stack Tom

Size	Type
14" x 14"	Floor Tom
16" x 16"	Floor Tom
18" x 16"	Floor Tom
14" x 12"	Short Floor Tom
16" x 14"	Short Floor Tom
14" x 5 1/2"	Snare Drum
14" x 6 1/2"	Snare Drum
14" x 8"	Snare Drum

Size	Type
18" x 14"	Bass Drum
18" x 16"	Bass Drum
20" x 14"	Bass Drum
20" x 16"	Bass Drum
20" x 18"	Bass Drum
20" x 20"	Bass Drum
22" x 16"	Bass Drum
22" x 18"	Bass Drum
22" x 20"	Bass Drum
24" x 16"	Bass Drum
24" x 18"	Bass Drum
24" x 20"	Bass Drum
26" x 16"	Bass Drum



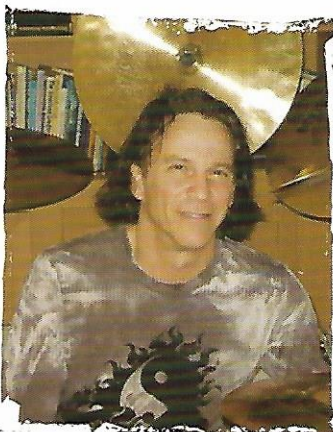
STYLISH PEWTER BADGE



DIAMOND CHROME FITTINGS

CHOICE OF THREE SNARE DRUMS FEATURING 10 LUG DIE-CAST HOOPS

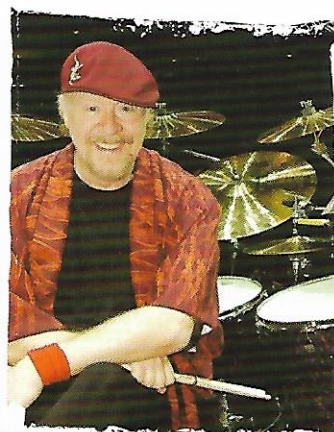
TOM AND FLOOR TOM BRACKETS INCLUDE INTEGRAL MEMOLOCK



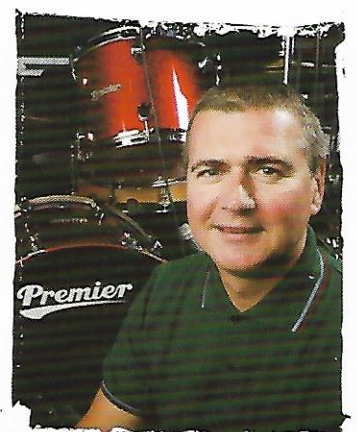
Rod Morgenstein - Dixie Dregs / Jazz Is Dead



Donovan Hepburn - Take That



Doane Perry - Jethro Tull

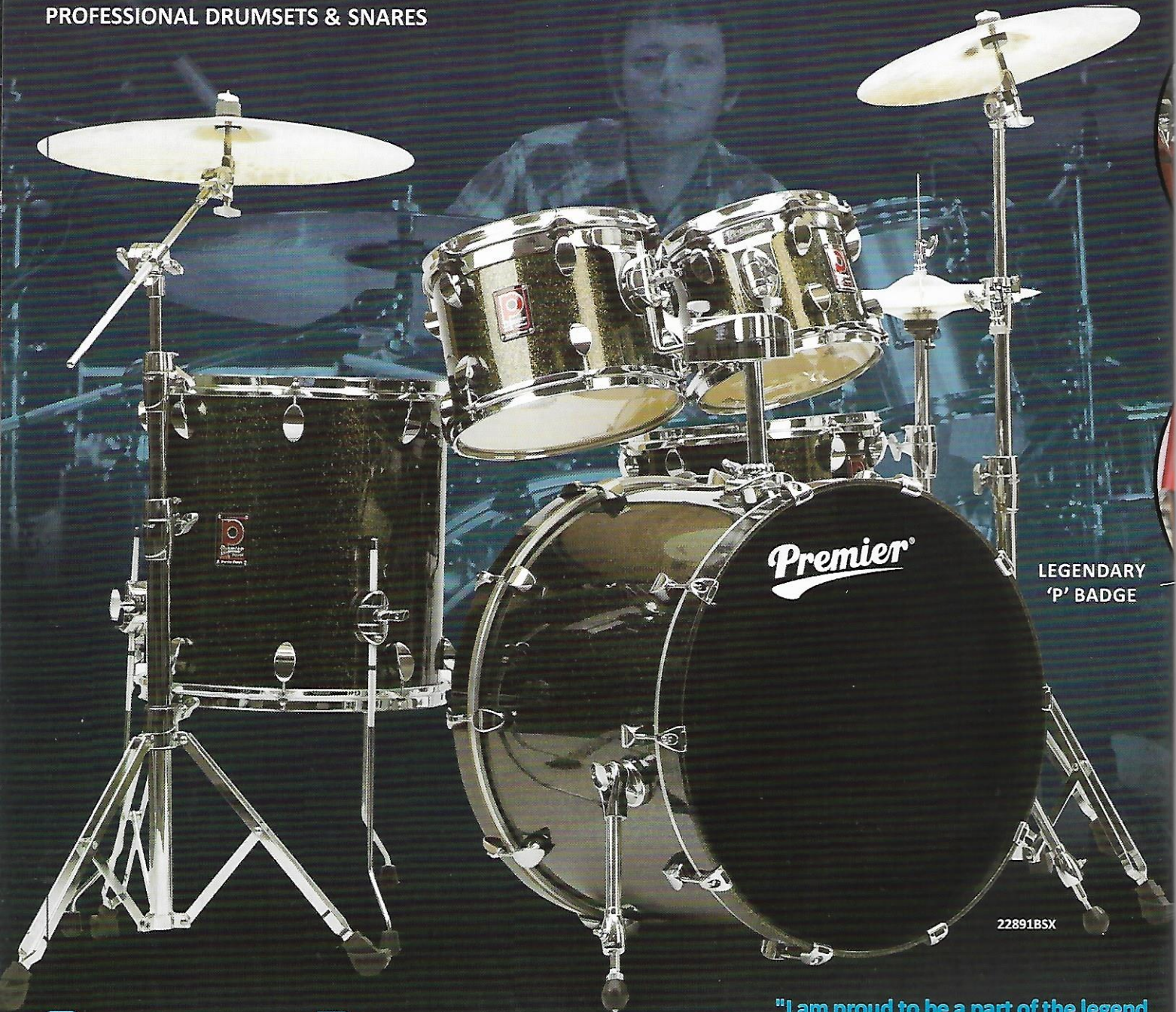


Steve White - Trio Valore



# PREMIER SERIES CLASSIC

PROFESSIONAL DRUMSETS & SNARES



LEGENDARY  
'P' BADGE

22891BSX

## CLASSIC PERFORMANCE

"I am proud to be a part of the legend that is Premier." Chris Sharrock - Oasis

A focussed selection of drumsets offering all the best features associated with the hugely successful Premier Series as well as some new design innovations at very affordable prices. Premier Series Classic drums are available in pre-configured shell packs, a first for truly high-end professional drums.

Constructed from premium grade North American maple, these high quality 6 ply pressure-bonded shells are undersized by 3mm, the traditional characteristic of Premier professional drums. This coupled

with a precision-cut bearing edge allows the drumhead to sit flatter producing increased sustain and low-end frequencies which result in an extraordinarily versatile tuning range. This design characteristic borrows from our finest orchestral timpani where tone and clarity are key.

Rack toms are fitted with the new flush-fit ISO mount which allows closer positioning in multi-tom set-ups and firm support with no unnecessary loading on the shell allowing optimum resonance.

'Crosstalk' between drums is also minimised, a bonus in any recording or live miking situation.

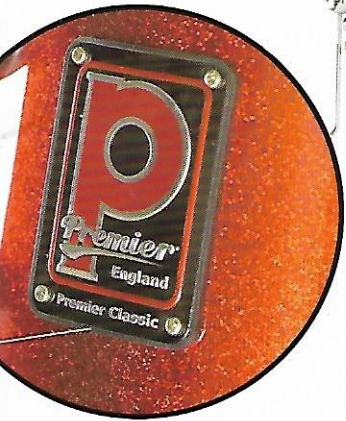
With the distinctive Premier Series lug, 2.3mm steel hoops, and the quality assurance of the legendary "Red P" badge, these drums are ready for action. Tuning is made easy as Remo heads are fitted as standard; world renowned Ambassador on snares and toms and the mighty Powerstroke 3 on the bass drums.





### FLUSH-FIT ISO MOUNT

Snug fit allows easier set-up management and off-shell bracket placement encourages more depth of tone.



### 6MM 6-PLY NORTH AMERICAN MAPLE SHELL

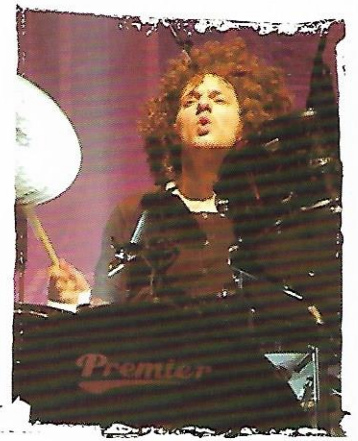


22897NWX

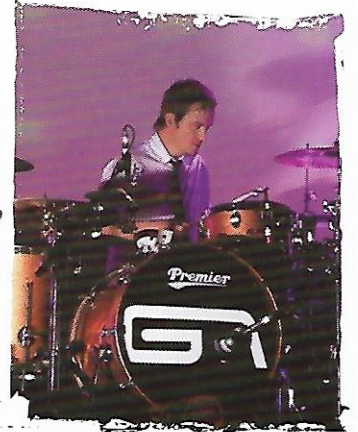
### 2.3MM STEEL HOOPS

In unison with the undersized shell and precision bearing edge enhance the clarity and tonality of the maple shell.

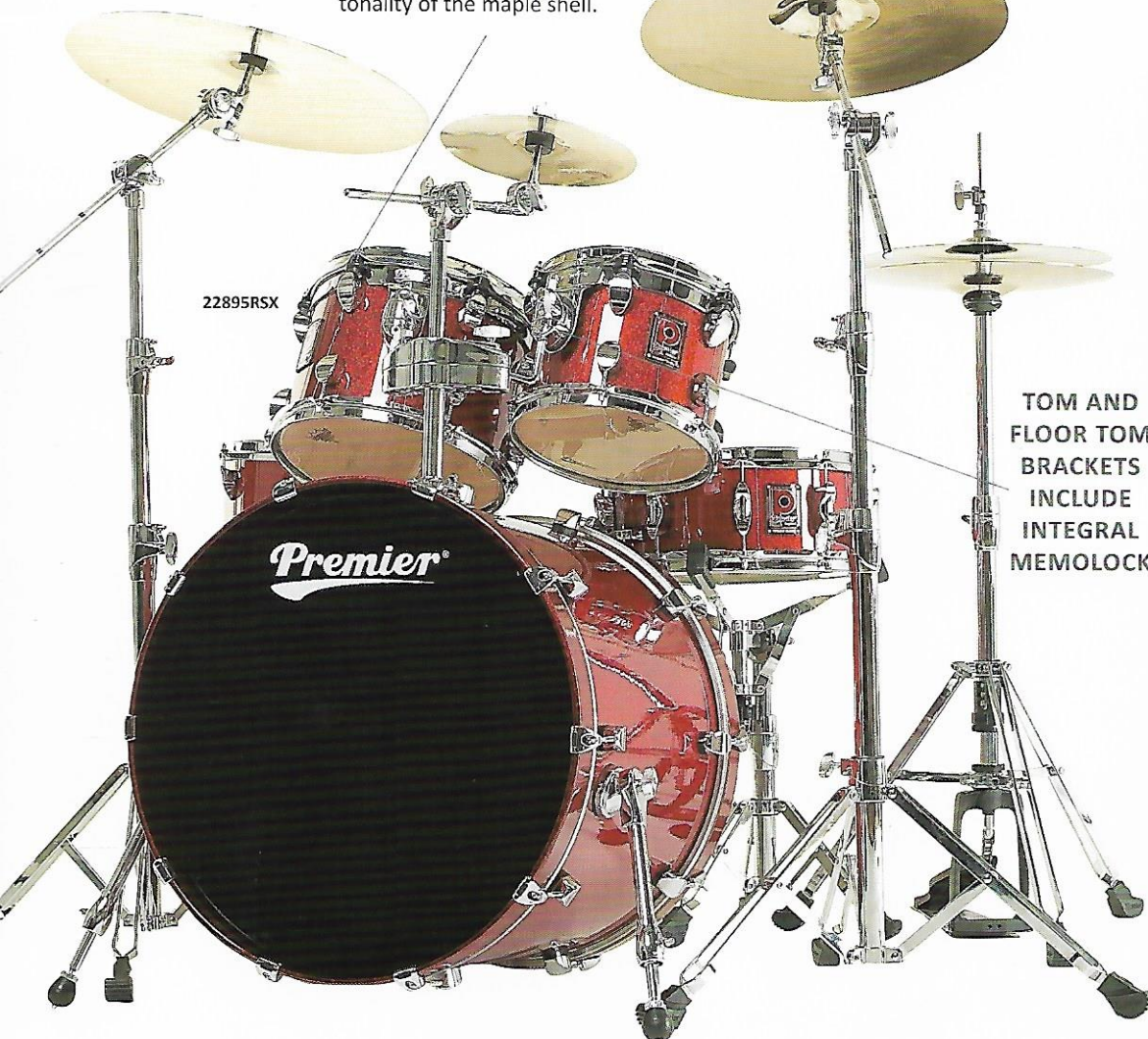
### CLAW HOOK WITH PROTECTIVE RUBBER LINER



Sean Payne - The Zutons

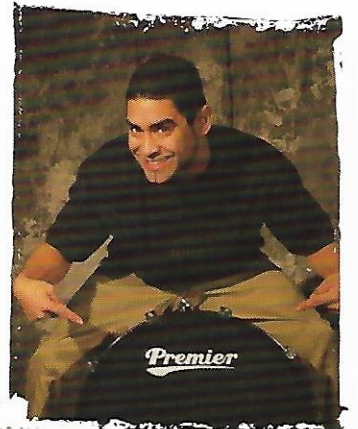


Martin Carling - Groove Armada

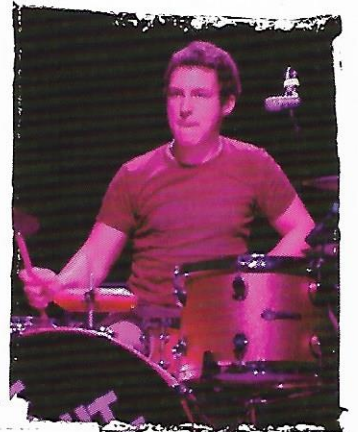


22895RSX

### TOM AND FLOOR TOM BRACKETS INCLUDE INTEGRAL MEMOLOCK



Joe Nunez - Soulfly



Matt Helders - Arctic Monkeys



Black Sparkle  
Lacquer  
(BSX)

Red Moon  
Sparkle Lacquer  
(RSX)

Norwegian Blue  
Sparkle Lacquer  
(NWX)

Rainforest Sparkle  
Lacquer  
(RFX)

Burnt Orange  
Lacquer  
(OL)

Rosewood  
Lacquer  
(RWL)

DRUMHEADS BY  
REMO USA

22891RFX

**"Premier was my first choice when I started playing drums. Today, they are my only choice. They are simply the best sounding drums on the planet!"** Scott Phillips - Alter Bridge

### Premier Classic Add-ons

Size	Type	Code
8" x 7"	Quick Tom	22808-R
10" x 8"	Quick Tom	22800-R
13" x 10"	Quick Tom	22813-R
14" x 11"	Quick Tom	22814-R
14" x 14"	Floor Tom	22854
16" x 16"	Floor Tom	22856
18" x 16"	Floor Tom	22858
20" x 18"	Bass Drum	22880-R
22" x 18"	Bass Drum	22882-R

Bass drums come without tom mount plate.

To complement these shell packs a range of add-on drums is also available to enable your own unique voice to be heard.

Together with two incredible snare drums; 14 x 5½ and 14 x 6½ and a choice of hardware which includes our muscular 6000 Series the Premier Series Classic is surely the compass to set your musical direction by!

Looking great on stage offers no challenges with a choice of 6 stunning finishes including exciting sparkles and timeless wood grain lacquers.

22845RSX



### Studio 20

Punchy and versatile this great combination of compact sizes offers an articulate and focussed set-up equally at home either in the studio or on stage.

*Not available in RFX*

#### 22890

- 10" x 7" Short Tom
- 12" x 7" Short Tom
- 14" x 12" Short Floor Tom
- 20" x 18" Bass Drum with mount plate
- Roklok twin tom holder

### Stage 22

Space efficient with a wide tonal bandwidth, this configuration provides a practical and reliable set-up for drummers with an adaptable approach to their playing.

#### 22892

- 10" x 8" Quick Tom
- 12" x 9" Quick Tom
- 14" x 14" Floor Tom
- 22" x 18" Bass Drum with mount plate
- Roklok twin tom holder

### Rock 22

A timeless and proven set-up making this a solid kit to span all musical tastes and genres. The ideal foundation for a larger configuration utilising the range of add-on drums.

#### 22895

- 12" x 9" Quick Tom
- 13" x 10" Quick Tom
- 16" x 16" Floor Tom
- 22" x 18" Bass Drum with mount plate
- Roklok twin tom holder

### Modern Rock 22

The solid power of the bass drum coupled with the broad sonic range of the toms make this set-up ready to handle the extreme dynamics demanded by today's rock styles.

#### 22891

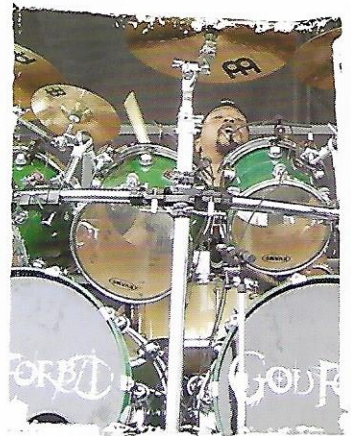
- 10" x 8" Quick Tom
- 12" x 9" Quick Tom
- 16" x 16" Floor Tom
- 22" x 18" Bass Drum with mount plate
- Roklok twin tom holder

### Heavy Rock 22

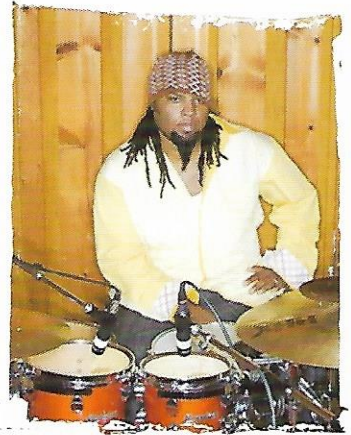
A set-up chosen by many working drummers today, this set-up allows for comfortable ride cymbal positioning afforded by the one rack and two floor tom combination.

#### 22897

- 12" x 9" Quick Tom
- 14" x 14" Floor Tom
- 16" x 16" Floor Tom
- 22" x 18" Bass Drum with mount plate
- Single tom holder



Corey Pierce - God Forbid



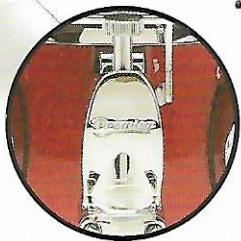
Terreon Gully - Stefon Harris / Christian McBride



Anders Johansson - Hammerfall



Hamish Rosser - The Vines



22846BSX

### SINGLE TENSION LUG

Stylish Premier Series single tension lug on 14" x 5 1/2".

### Premier Classic Snare Drums

Size	Type	Code
14" x 5 1/2"	Snare Drum	22845
14" x 6 1/2"	Snare Drum	22846



# ARTIST HERITAGE

## VINTAGE INSPIRED SET-UPS

"I have been consistently impressed with Premier drums. Their distinctive shell construction produces a warm balanced musical tone, resulting in an extremely versatile drum." Martin France - Spin Marvel



VINTAGE STYLE FOLDING  
BASS DRUM SPUR

DRUMHEADS BY  
REMO

## HISTORY REPEATING

With its roots in the rich seam of creative music making, the Artist Heritage Series offers a selection of drumsets appealing to drummers looking for simpler more traditional set-ups. Whether revisiting historical musical styles or exploring cutting edge acoustic composition, this range offers a focussed yet affordable choice.

Made from 6 ply premium birch, the

range includes the jazz drummers staple 18" x 14" bass drum and 12" x 8" tom in the 'Jazz 18' set-up or 20" x 14" in the 'Jazz 20' for those seeking a little more authority to deal with higher volume styles. The space saving and sonically mighty 20" x 8" bass drum in the famous 'Club Kit' configuration completes the exciting range of set-ups available.

Features include the distinctive new

Heritage lug, 2.3mm steel hoops, Remo drumheads, our new Heritage folding bass drum spurs, and the legendary "Red P" badge, truly a seal of approval!

Take your choice from one of 4 vintage style finishes; the iconic Silver Sparkle or White Marine Pearl, a stylish and classic Dark Walnut Lacquer or new Emerald Green Diamond.



## Jazz 18

Best suited to acoustic settings needing articulation, control and tone at lower volumes this set-up features an 18" bass drum for those favouring the vibrancy of open tunings.

### 44591

- 10" x 8" Quick Tom
- 12" x 8" Standard Tom
- 14" x 14" Floor Tom
- 18" x 14" Bass Drum with mount plate
- 14" x 5 1/2" Snare Drum
- Roklok twin tom holder

## Jazz 20

The 20" bass drum allows more punch and volume suiting it to higher dynamic levels. Combined with the compact tom sizes this makes a versatile yet streamlined set-up.

### 44592

- 10" x 8" Quick Tom
- 12" x 8" Standard Tom
- 14" x 14" Floor Tom
- 20" x 14" Bass Drum with mount plate
- 14" x 5 1/2" Snare Drum
- Roklok twin tom holder

## Club Kit

Compact and characterful the Club Kit couples great sound with portability and an ability to set-up in small spaces. A unique appearance that adds another dimension to this practical set-up. It's great fun to play!

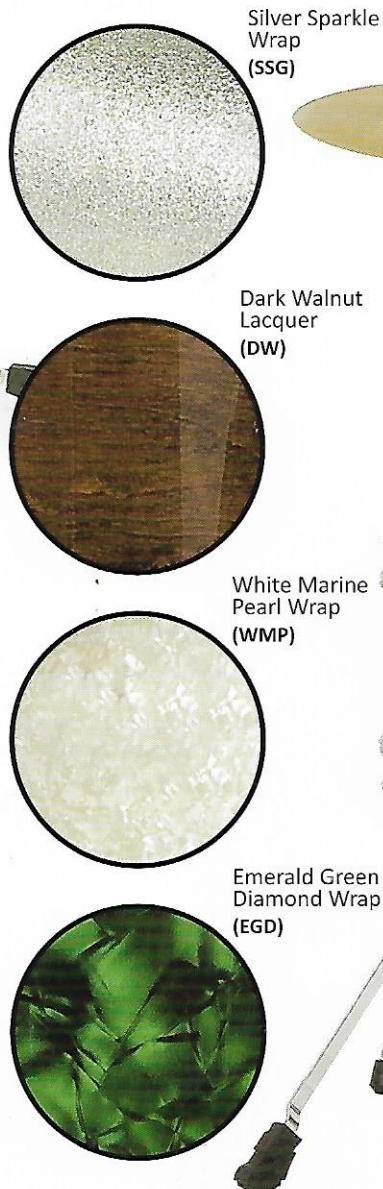
### 44590

- 10" x 6" Club Tom
- 13" x 11" Club Floor Tom
- 20" x 8" Bass Drum with mount plate
- 13" x 5 1/2" Snare Drum
- Single tom holder

Steve Davis - Jazz Great



Richie Barshay - Herbie Hancock, The Klezematics, Richie Barshay Project



Silver Sparkle Wrap (SSG)

Dark Walnut Lacquer (DW)

White Marine Pearl Wrap (WMP)

Emerald Green Diamond Wrap (EGD)

2.3MM TRIPLE FLANGE STEEL HOOPS

LEGENDARY 'P' BADGE

TOM AND FLOOR TOM BRACKETS INCLUDE INTEGRAL MEMOLOCK



44590DW



# SNARE DRUMS

PREMIER SERIES ELITE | PREMIER SERIES CLASSIC | MODERN CLASSIC

HEAVY-DUTY, FULLY ADJUSTABLE  
SNARE STRAINER

## Premier Elite Snare Drums

Size	Type	Code
14" x 5 1/2"	Maple Shell	2845VM
14" x 6 1/2"	Maple Shell	2846VM
14" x 8"	Maple Shell	2848VM

DRUMHEADS BY  
REMO USA

10 LUG DIE-CAST  
HOOPS

6MM 6-PLY NORTH  
AMERICAN MAPLE SHELL

2846VM

LEGENDARY 'P'  
BADGE

DISTINCTIVE DIAMOND  
CHROME LUGS

STYLISH PEWTER  
BADGE

2.3MM TRIPLE FLANGE  
STEEL HOOPS

VINTAGE  
MAPLE FINISH

CLASSIC SMOOTH ACTION  
SNARE STRAINER

22846BSX

AVAILABLE IN A CHOICE OF SIX  
LACQUER FINISHES  
(SEE PAGE ?? FOR OPTIONS)

22845RSX

## Premier Classic Snare Drums

Size	Type	Code
14" x 5 1/2"	Snare Drum	22845
14" x 6 1/2"	Snare Drum	22846

**"If you want the recipe for musicality, tone, sensitivity and beauty; Premier Drums have the major ingredients!"** Derico Watson - Victor Wooten Band

## TIMELESS CLASSICS

Premier's exclusive snare drum collection is inspired by iconic vintage drums of the past to offer timeless design that suits contemporary musical requirements. With three distinctly different ranges of snare drums, you can be sure to find a model for every style of playing and every genre of music. All wood shell drums are crafted from 6 plies of premium North American maple with further options of hammered brass or steel shell in the Modern Classics.

The Premier Series Elite snares are designed for the heavier player and are available in a choice of three depths. The combination of precision engineered metal work and the timeless vintage maple finish ensures you have a truly fantastic instruments. Premier Series Elite snare drums are also available to match your Premier Series Elite kit.

Premier Series Classic snares are versatile by nature. With its classic style smooth action snare strainer and a choice of stunning lacquer finishes, each snare exudes a quality steeped in the history and tradition of drum making.

Finally the Modern Classic family of snares hark back to yesteryear with beautiful tube lugs and smooth action Dunnett snare strainer. From the richness and depth of maple, the dry warmth and tuneful projection of hammered brass, to the strong toned brightness and cut of steel, there's a Modern Classic to suit your individual style.



2629NL



2636NL



2.3MM TRIPLE FLANGE STEEL HOOPS

6MM 6-PLY NORTH AMERICAN MAPLE SHELL

DUNNETT SMOOTH ACTION SNARE STRAINER

2633NL



2631NL

ANTIQUE PEWTER BADGE

Modern Classic Snare Drums

Size	Type	Code
13" x 7"	Maple Shell	2629NL
14" x 4"	Maple Shell	2631NL
14" x 5 1/2"	Maple Shell	2633NL
14" x 7"	Maple Shell	2636NL

2617



BLACK CHROME HAMMERED BRASS SHELL

2615



2608

DIAMOND CHROME TUBE LUGS

Modern Classic Snare Drums

Size	Type	Code
13" x 5 1/2"	Ham. Brass Shell	2608
14" x 5 1/2"	Ham. Brass Shell	2615
14" x 7"	Ham. Brass Shell	2617



2653

POLISHED STEEL SHELL

Modern Classic Snare Drums

Size	Type	Code
14" x 5 1/2"	Steel Shell	2653





# HARDWARE

HI-HAT STANDS | SNARE STANDS

6115 4215 2215

Single Braced Legs			✓
Double Braced Legs	✓	✓	
Dual Position Memory Lock		✓	✓
Heavy-Duty Memory Lock	✓		
Heavy-Duty Feet	✓		
Tension Adjuster			✓
Infinite Tension Adjuster		✓	
Locking Tension Adjuster	✓		
Satin Chrome Ferrule		✓	✓
Diamond Chrome Ferrule	✓		
Base Plate	✓		

"My first kit as a child was Premier. My first and only choice for drums when touring and recording is Premier." Steve Barney - Sugababes

/ Annie Lennox

DIAMOND CHROME PLATING

DUAL POSITION MEMORY LOCK

SATIN CHROME FERRULE

HEAVY-DUTY MEMORY LOCK

DOUBLE BRACED LEGS

SINGLE BRACED LEGS

4215

2215

HEAVY-DUTY FEET

6115

BASE PLATE

## Hi-Hat Stands

Type	Code
6000 Series Double Braced	6115
4000 Series Double Braced	4215
2000 Series Single Braced	2215





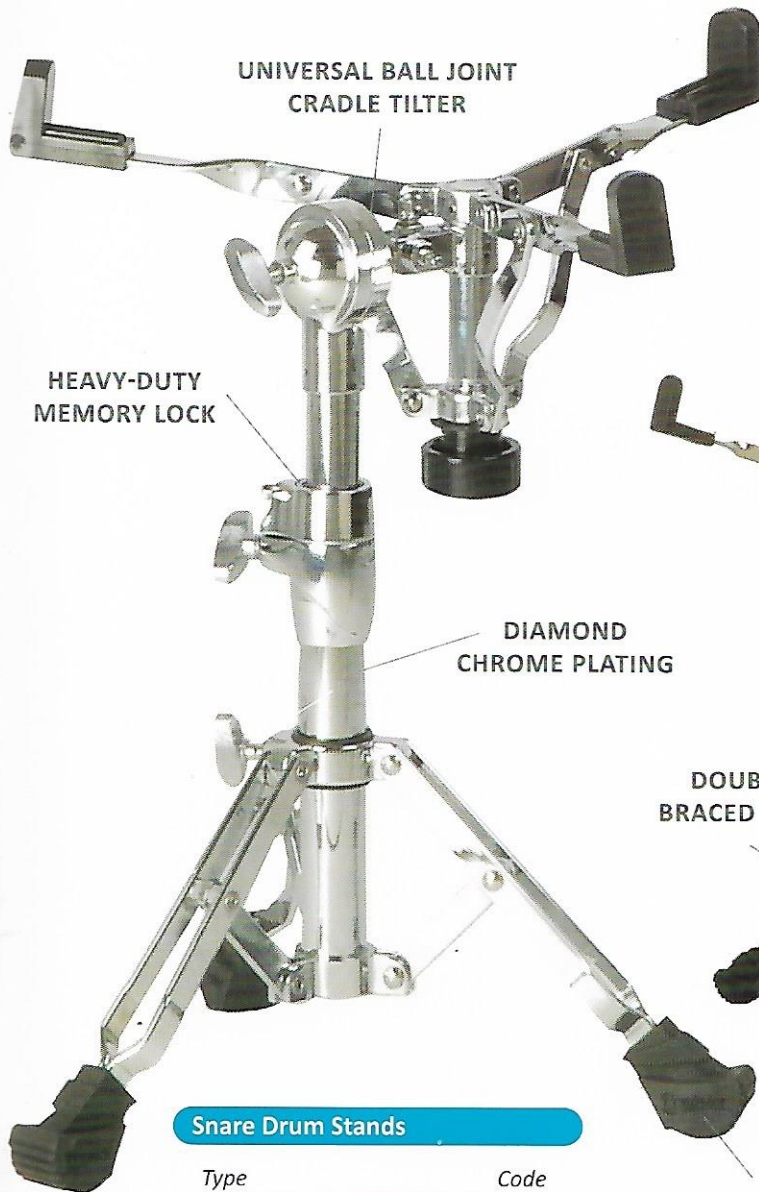
Gulli Briem - Freelance

Nathan Curran - Basement Jaxx

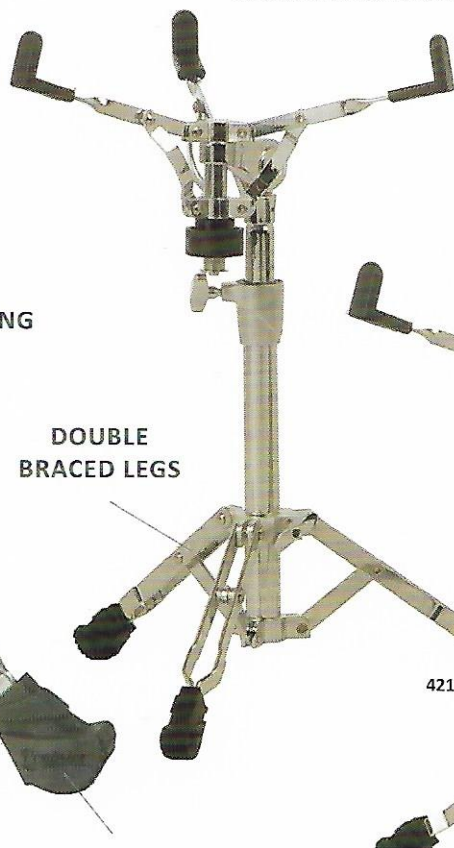
Stefan Schwarzmann - Freelance

Luke Bullen - KT Tunstall

Ian Skelly - The Coral



6113



HEAVY-DUTY FEET



4213

2213

6113 4213 2213

Flush Base Leg System	✓	✓	✓
Single Braced Legs			✓
Double Braced Legs	✓	✓	
Stepped Cradle Tilter		✓	✓
Universal Ball Joint Cradle Tilter	✓		
Heavy-Duty Memory Lock	✓		
Heavy-Duty Feet	✓		
Heavy-Duty Cradle Grips	✓		
Satin Chrome Ferrule		✓	✓
Diamond Chrome Ferrule	✓		

**Snare Drum Stands**

Type	Code
6000 Series Double Braced	6113
4000 Series Double Braced	4213
2000 Series Single Braced	2213

**Hardware Packs**

6000 Series **5861**

- Snare Stand (6113)
- Cymbal Stand (6114)
- Hi-Hat Stand (6115)
- Cymbal Boom Stand (6116)
- Bass Drum Pedal (6073)

4000 Series **5889**

- Snare Stand (4213)
- Cymbal Stand (4214)
- Hi-Hat Stand (4215)
- Cymbal Boom Stand (4216)
- Bass Drum Pedal (0205)

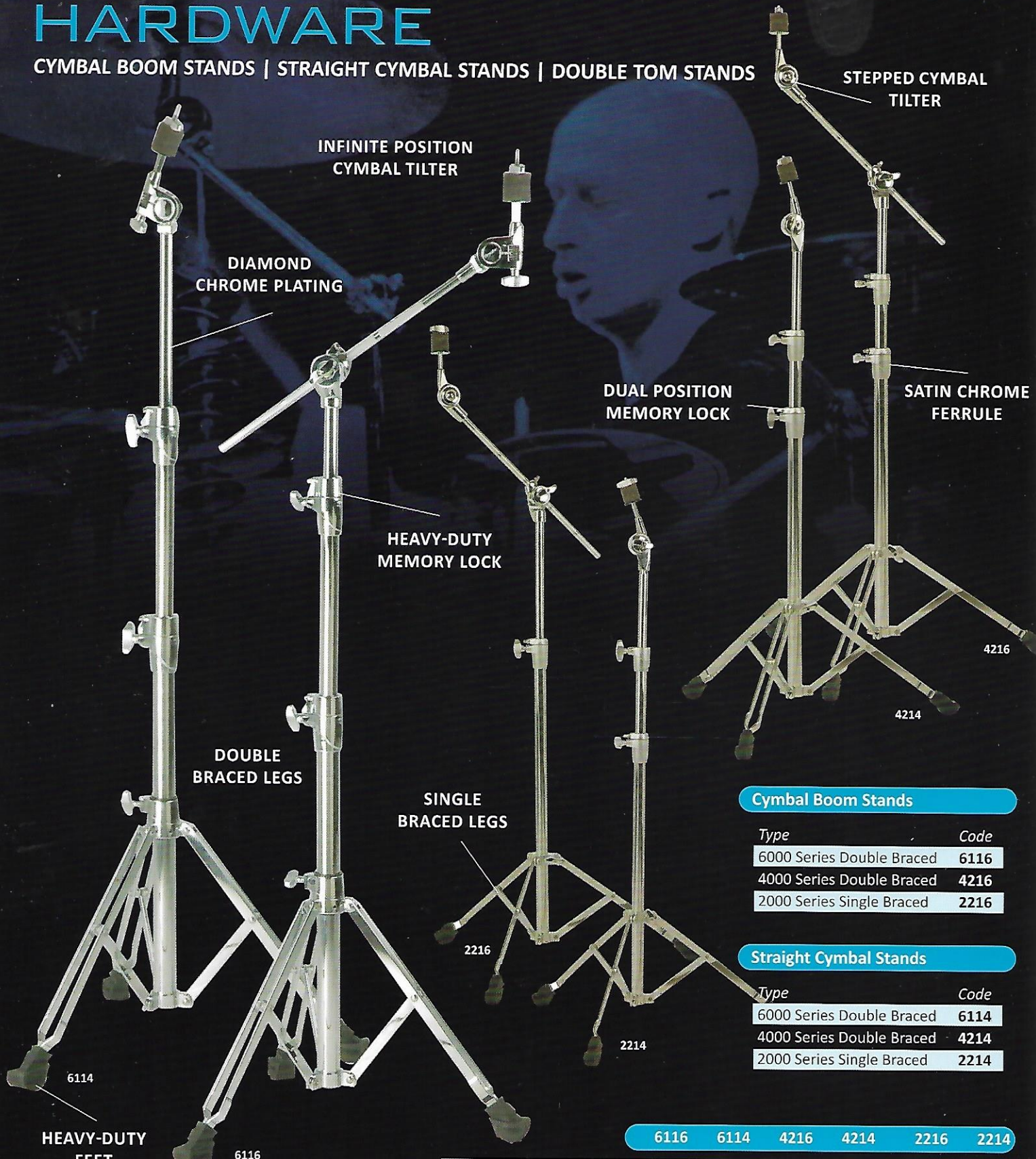
2000 Series **5847**

- Snare Stand (2213)
- Cymbal Stand (2214)
- Hi-Hat Stand (2215)
- Cymbal Boom Stand (2216)
- Bass Drum Pedal (0204)



# HARDWARE

CYMBAL BOOM STANDS | STRAIGHT CYMBAL STANDS | DOUBLE TOM STANDS



INFINITE POSITION  
CYMBAL TILTER

DIAMOND  
CHROME PLATING

STEPPED CYMBAL  
TILTER

DUAL POSITION  
MEMORY LOCK

SATIN CHROME  
FERRULE

HEAVY-DUTY  
MEMORY LOCK

DOUBLE  
BRACED LEGS

SINGLE  
BRACED LEGS

### Cymbal Boom Stands

Type	Code
6000 Series Double Braced	6116
4000 Series Double Braced	4216
2000 Series Single Braced	2216

### Straight Cymbal Stands

Type	Code
6000 Series Double Braced	6114
4000 Series Double Braced	4214
2000 Series Single Braced	2214

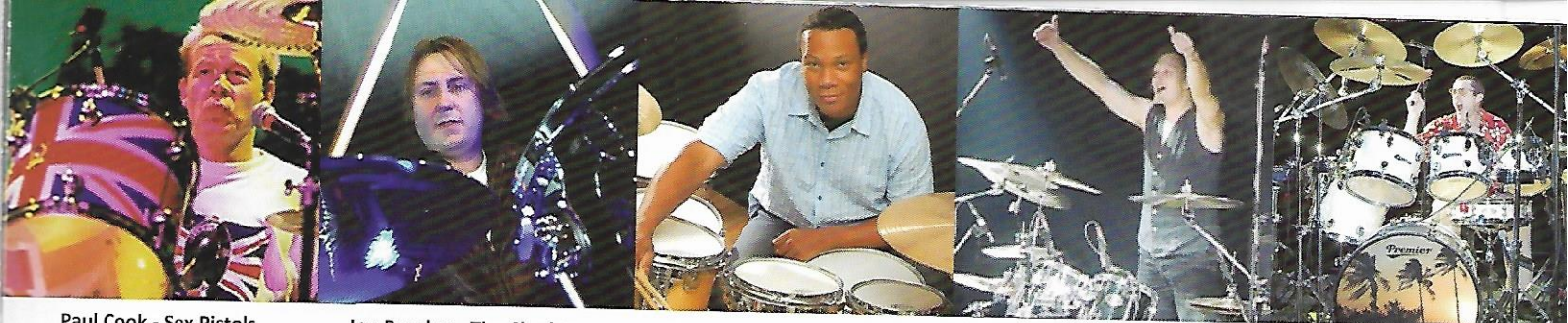
HEAVY-DUTY  
FEET

6116 6114 4216 4214 2216 2214

"Premier provides me with tour worthy and reliable drums. They sound incredible and adapt to any sound situation. Premier rocks!!" Ged Lynch - Peter Gabriel

	6116	6114	4216	4214	2216	2214
Flush Base Leg System	✓	✓	✓	✓	✓	✓
Single Braced Legs					✓	✓
Double Braced Legs	✓	✓	✓	✓		
Stepped Cymbal Tilter			✓	✓	✓	✓
Infinite Position Cymbal Tilter	✓	✓				
Dual Position Memory Lock			✓	✓	✓	✓
Heavy-Duty Memory Lock	✓	✓				
Heavy-Duty Feet	✓	✓				
Satin Chrome Ferrule			✓	✓	✓	✓
Diamond Chrome Ferrule	✓	✓				





Paul Cook - Sex Pistols

Jon Brookes - The Charlatans

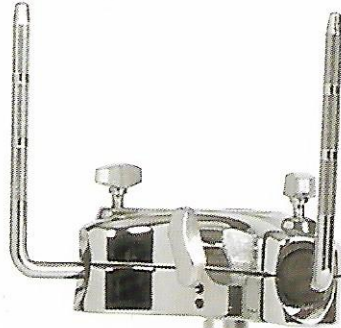
Gene Lake - David Sanborn /  
Dave Douglas

Danny Zimmermann - Gamma Ray

Clune - David Gray

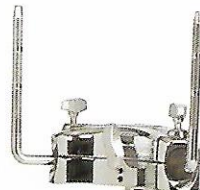
	6127	4227	2227
--	------	------	------

Flush Base Leg System	✓	✓	✓
Single Braced Legs			✓
Double Braced Legs	✓	✓	
Dual Position Memory Lock		✓	✓
Heavy-Duty Memory Lock	✓		
Heavy-Duty Feet	✓		
Satin Chrome Ferrule		✓	✓
Diamond Chrome Ferrule	✓		



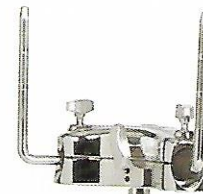
DIAMOND  
CHROME PLATING

HEAVY-DUTY  
MEMORY LOCK



DUAL POSITION  
MEMORY LOCK

DOUBLE  
BRACED LEGS



SATIN CHROME  
FERRULE

4227

2227

### Double Tom Stands

Type	Code
6000 Series Double Braced	6127
4000 Series Double Braced	4227
2000 Series Single Braced	2227

6127

HEAVY-DUTY  
FEET

SINGLE  
BRACED LEGS



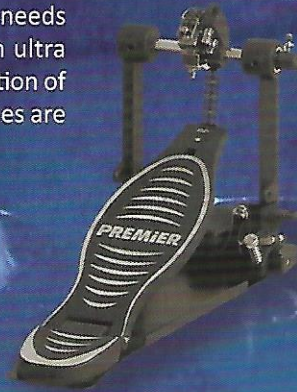
# PEDALS & THRONES

Premier offers a range of pedals and thrones to suit the needs of every drummer. All pedals have a great feel with an ultra sensitive response whilst the thrones combine a full selection of seat types with tour-worthy stability. All pedals and thrones are adjustable to suit individual tastes.



**6073**  
6000 Series  
Deluxe Pedal

BASE PLATE



**6077**  
6000 Series  
Double Pedal

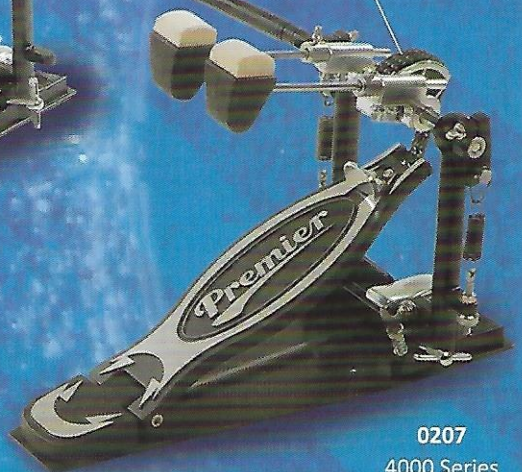
Also available as left-footed (6077L)

**"Premier Drums, the building blocks in which legends are made!"** Ginger Fish - Marilyn Manson

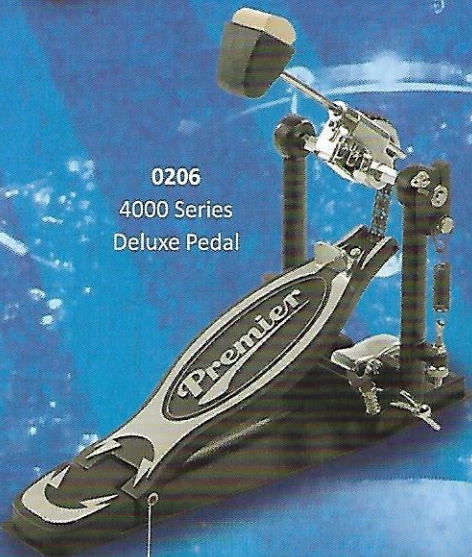


**0206**  
4000 Series  
Deluxe Pedal

ADJUSTABLE CAM  
AND FOOTPLATE  
ANGLE



**0207**  
4000 Series  
Double Pedal

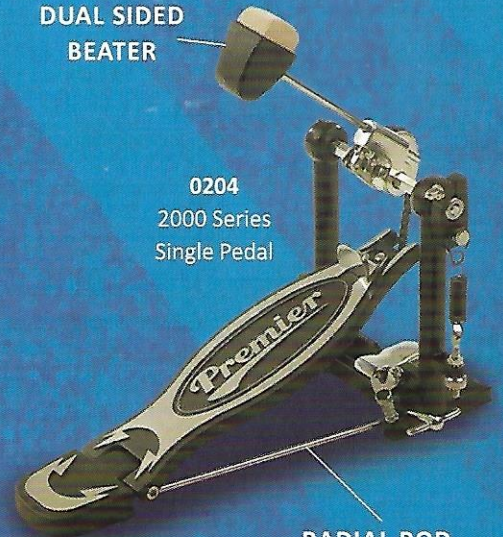


FAST ACTION  
FOOTPLATE



**0205**  
4000 Series  
Single Pedal

DUAL SIDED  
BEATER

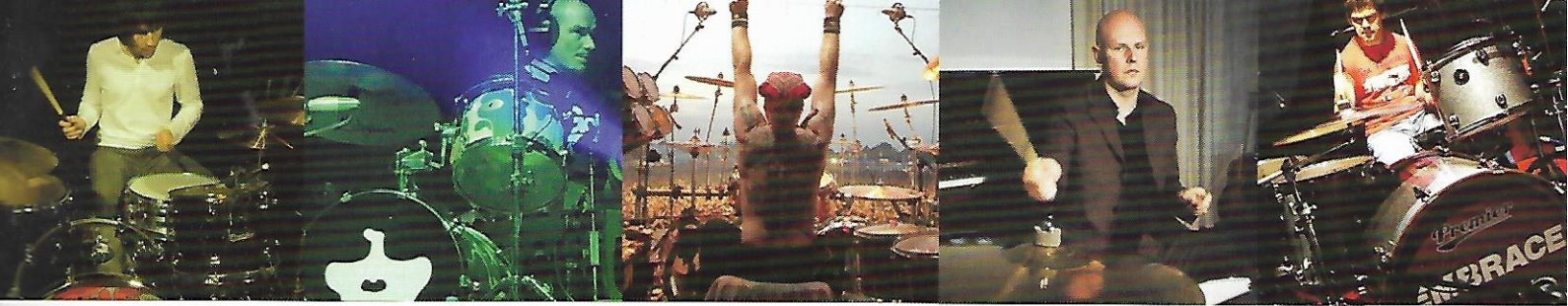


**0204**  
2000 Series  
Single Pedal

RADIAL ROD

	6077	6073	0207	0206	0205	0204
Single Chain Drive						✓
Dual Chain Drive	✓	✓	✓	✓	✓	✓
Radial Rod					✓	✓
Pedal Base Plate	✓	✓	✓	✓		
Toe Stop	✓	✓	✓	✓	✓	✓
Beater Balance Weight			✓	✓		
Dual Sided Beater	✓	✓	✓	✓	✓	✓
Grip Spurs	✓	✓	✓	✓	✓	✓
Velcro Grip	✓	✓	✓	✓	✓	✓
Adjustable Cam	✓	✓	✓	✓	✓	✓





Greg Mighall - The Rascals

Rob Maxfield - Ian Brown

Jorg Michael - Stratovarius

Philip Selway - Radiohead

Mike Heaton - Embrace



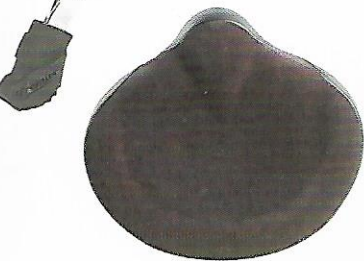
DOUBLE BRACE  
LEGS

**6012SC**  
6000 Series  
Deluxe Cloth Saddle Throne

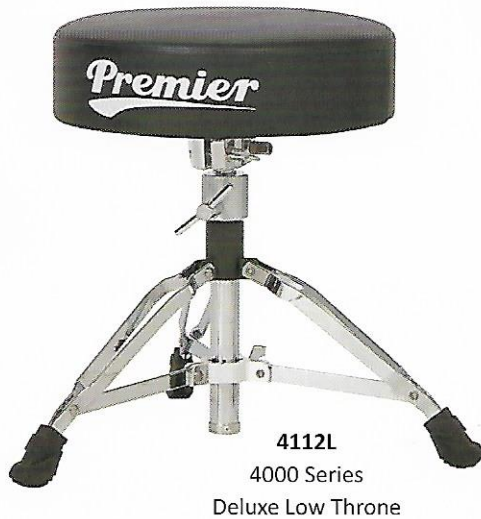


**6012RV**  
6000 Series  
Deluxe Vinyl Round Throne

**6012SV**  
6000 Series  
Deluxe Vinyl Saddle Throne



**2112**  
2000 Series  
Standard Throne



**4112L**  
4000 Series  
Deluxe Low Throne

WIDE BASE  
STABILITY



**4112**  
4000 Series  
Deluxe Throne





# ACCESSORIES

A state-of-the-art collection of multi-clamps, add-on cymbal arms, booms and tom holders.

2290

Single Tom Holder  
(1" Tube)

2296

Roklok Twim Tom Holder  
(1" Tube)

2371

Tom L-Arm

2291

Auxillary Single  
Tom Holder

2381

Accessory L-Arm

2379

Boom L-Arm

2376

Auxillary Short  
Cymbal Boom

2377

Long Cymbal  
Boom

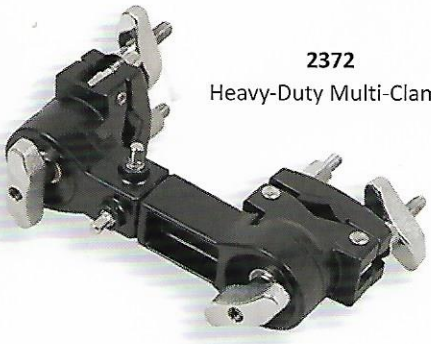
2375

Short Cymbal  
Boom

2378

Cymbal  
L-Arm





**2372**  
Heavy-Duty Multi-Clamp



**2374**  
Mini Multi-Clamp



**2383**  
X-Hat and Multi-Clamp



**2373**  
Medium Multi-Clamp



**2382**  
Multi-Clamp and L-Arm





# Premier®

premier-percussion.com



**Premier Music International Limited**

Kibworth Business Park, Kibworth Harcourt,  
Leicestershire, LE8 0EX, UK

Tel: +44 (0)116 279 1444 Fax: +44 (0)116 279 1241

Email: [info@premier-percussion.com](mailto:info@premier-percussion.com)

© 2009 Premier Music International Limited 7020-DRUMSET.0109

Premier is dedicated to creating percussion instruments of only the highest possible quality. Because we are constantly improving, updating and introducing new products, and because we also may be subject to material changes outside of our control, we reserve the right to change product specifications as necessary without prior notification.