

## SNARE DRUMS

With Fibes Snare Drums the choice is yours. Fiberglass, Crystalite (Acrylic), and Maple. All shells are available in 13 and 14 inch diameters and a variety of depths.

The SFT snare strainer, a design exclusive to Fibes, has no internal springs or cams to release the snares, so constant snare tension and total reliability are achieved. Full dynamic range with articulation, and power.

## TOM TOMS

The Tom Toms, and Floor Toms are offered in both conventional and power sizes. Choose between RIMS™ mounts, or use any brand tom tom holder system that you prefer. With precise sound edges, these drums have a warm and rich tone, with outstanding attack and projection. Available from 6 to 18 inches.

## BASS DRUMS

Fibes Bass Drums have an incredible low tone. The spring loaded Fibes "floating" spurs (another exclusive Fibes design innovation) do not penetrate the shell, thereby maintaining the integrity of the drum and ensuring the maximum warm full bodied sound. Bass drums are available from 18 to 26 inches in conventional and power sizes.

### Fibes Drum Company

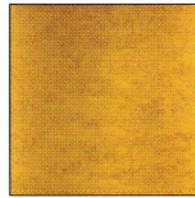
701 South Lamar Blvd.

Austin, Texas 78704

512/416-9955 FAX 512/416-9956

e-mail: fibes@bga.com

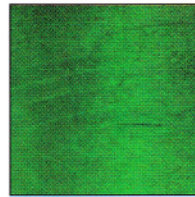
# fibes



Amber



Maple



Emerald Green



Sapphire Blue



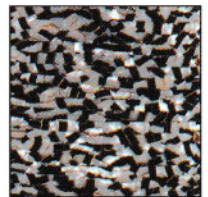
Mahogany



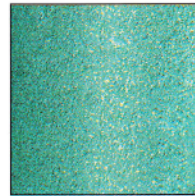
Onyx



Ruby Red



Black & White Crunch



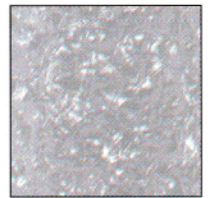
Turquoise Sparkle



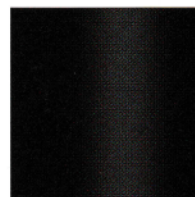
Champagne Sparkle



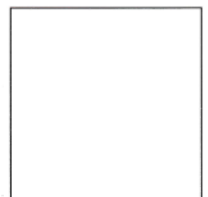
Silver Sparkle



White Marine Pearl



Piano Black



Piano White

